

For power issue, Try EC reset.

Turn off, unplug charger and hold down the power button for 30 seconds.

Make sure to plug in the charger after the reset, then just turn on to test.

1. Power Key/ Power LED/ GPU Mode LED/ Battery Reset

Power Key

- Press this key to turn the notebook power ON.
- While the notebook is turned on, press this key to force the computer into sleep state. Press again to wake up the system from sleep state.
- Long press this key and follow the on-screen instruction to turn the notebook power OFF.

Power LED/ GPU Mode LED

- Glowing white when the notebook power is turned on and in integrated GPU mode.
- Glowing amber when it is in optionally supported discrete GPU mode.
- LED goes off when the notebook goes to the sleep state.
- LED goes off when the notebook is turned off.



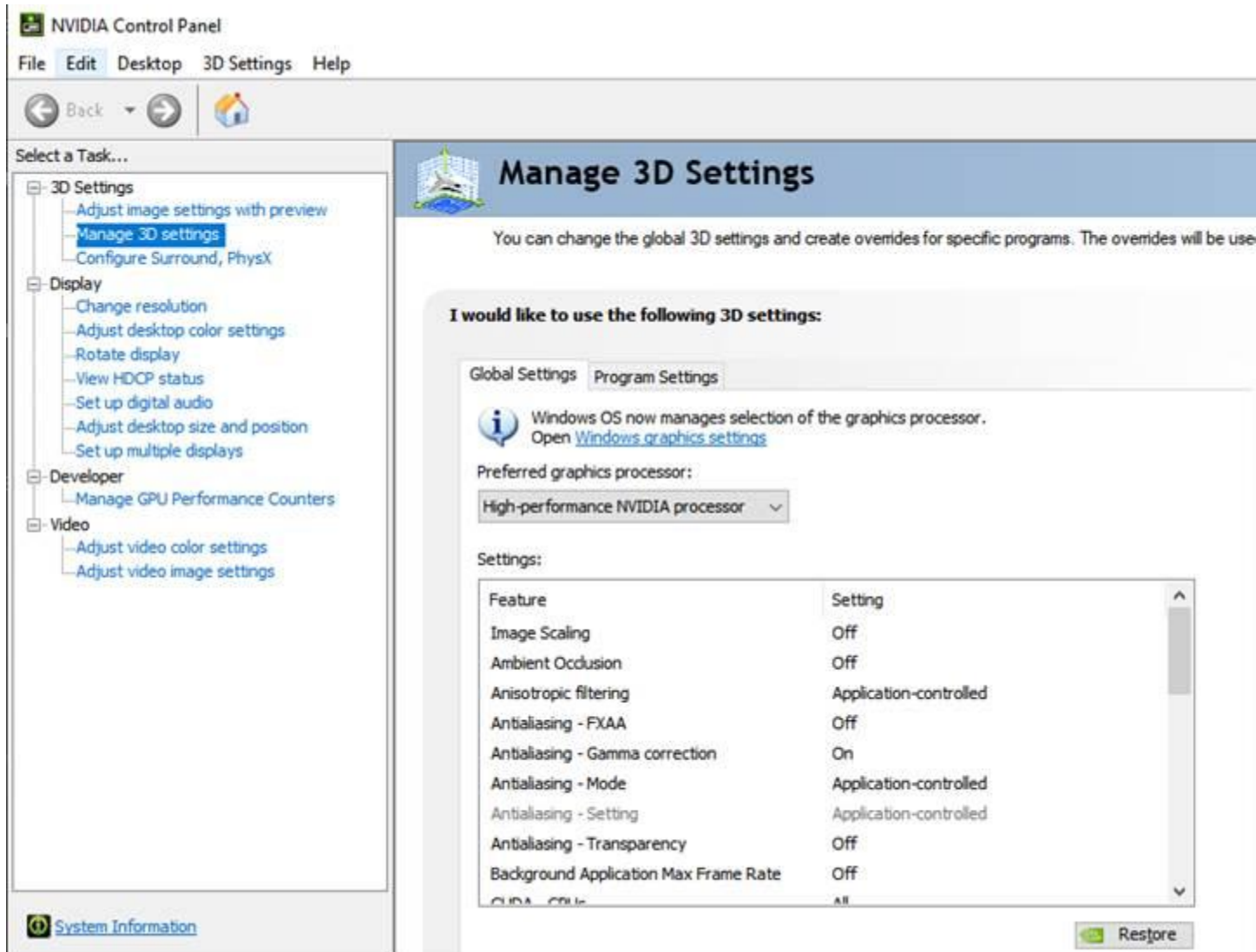
Battery Reset

Whenever the system firmware (EC) is upgraded or the system hangs, please 1) remove the AC power; 2) long press this key for 20 secs and then the LED goes to blink, and after 5 more secs the LED would go off; 3) connect the AC power; 4) power on the notebook.

Very loud and lagging in games

Make sure to select Nvidia graphic card as the main processor.

Nvidia control panel -> manage 3D settings -> Global settings, select High performance NVIDIA processor -> click on apply.



Update graphic driver

<https://us.download.nvidia.com/Windows/531.79/531.79-notebook-win10-win11-64bit-international-dch-whql.exe>

Select custom install and check "perform a clean installation"

Same time getting stuck on startup !

Need more information

If Windows fails to load, try factory reset.

Tapping on F3 during boot up, select troubleshoot -> restore MSI factory settings -> system partition recovery.

Note this will erase all data and reload windows.