

A

B

C

D

E

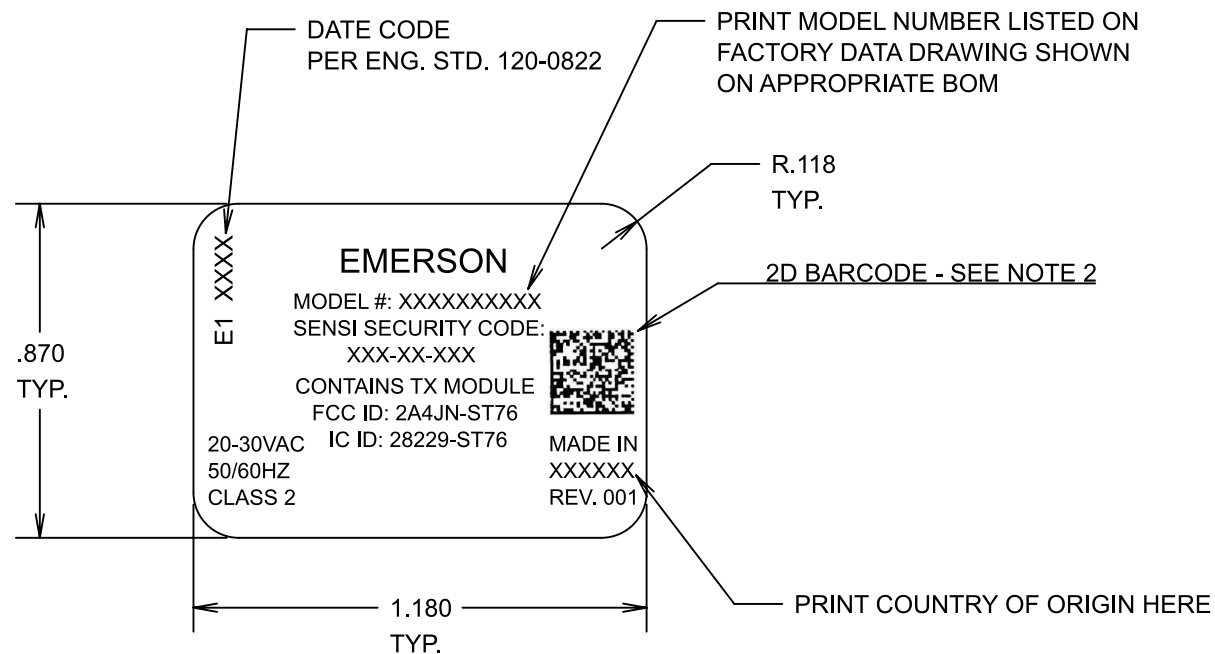
F

G

1

2

3



NOTES:

- 1.) SENSI SECURITY CODE AND MAC ID ARE UNIQUE. A DIFFERENT SECURITY CODE IS PART OF THE FACTORY DATA PER MAC ID AND THE MANUFACTURER HAS TO PRINT THE SECURITY CODE CORRESPONDING TO THE MAC ID ON THE LABEL
- 2.) 2D BARCODE STRUCTURE IS AS FOLLOWS:  
XXXXXXXXXXWWYSSSSS  
THE FIRST 10 X'S ARE THE MODEL NUMBER  
THE 2 W'S ARE THE WEEK OF THE YEAR  
THE 2 Y'S ARE THE YEAR  
THE 5 S'S ARE THE SERIAL NUMBER
- 3.) IF THE MODEL NUMBER DOES NOT USE ALL THE AVAILABLE SPACE, THE NUMBER SHOULD BE TRUNCATED FROM THE LEFT
- 4.) WEEK AND YEAR SHOULD BE PER EESS 120-0822

MATERIAL: 2 MIL WHITE POLYESTER PERMANENT ACRYLIC ADHESIVE	
FINISH	DESCRIPTION
00	NONE



DO NOT SCALE DRAWING.  
WORK TO DIMENSIONS  
REFER TO EPRO 002-0140 and  
ASME Y14.5-2009  
UNLESS OTHERWISE SPECIFIED,  
DIMENSIONS IN INCHES (mm)  
IF PLATING IS SPECIFIED ALL  
DIMENSIONS  
TO BE MET AFTER PLATING.  
REMOVE ALL BURRS.  
DIMENSION =±.015(.38)  
ANGLES =±1°  
ALL RIGHT ANGLES =90°  
CHAMFER ANGLES =±5°  
CONCENTRICITY = .010(.25)T.I.R  
DUAL DIMENSIONS AS SHOWN  $\frac{\text{inch}}{\text{mm}}$  OR Inch (mm)

THIRD ANGLE PROJECTION

**CLASSIFICATION OF CHARACTERISTICS**

MINOR

DESIGN CRITICAL

DESIGN MAJOR

CTQ CRITICAL

CTQ MAJOR

REFER TO QPRO 7.3-1011 FOR EXPLANATION OF CLASSIFICATION OF CHARACTERISTICS

**CONFIDENTIALITY NOTICE**  
THIS DRAWING AND INFORMATION CONTAINED HEREIN ARE THE EXCLUSIVE PROPERTY OF EMERSON AND SHALL BE RETURNED UPON DEMAND AND SHALL NOT BE REPRODUCED IN WHOLE OR IN PART, DISCLOSED TO ANYONE ELSE OR USED, WITHOUT THE WRITTEN CONSENT OF EMERSON.

SUPERSEDES DWG. NO./REV. NO.

TITLE:  
**LABEL (IDENT.)**

<b>SUPPLIER NOTICE</b> CHANGES TO MATERIAL, DESIGN, CONFIGURATION OR PROCESS MAY NOT BE MADE WITHOUT NOTIFICATION TO WHITE-RODGERS. ALL MATERIALS AND PROCESSES MUST BE COMPLIANT WITH ENVIRONMENTAL LAWS AND REGULATIONS AS REFERENCED IN DPRO 002-0106			
C OF C REVIEW: BR	DATE: 02/10/22	SHEET 1 OF 2	REV. 001
DRAWING NO. 5002-2052			

