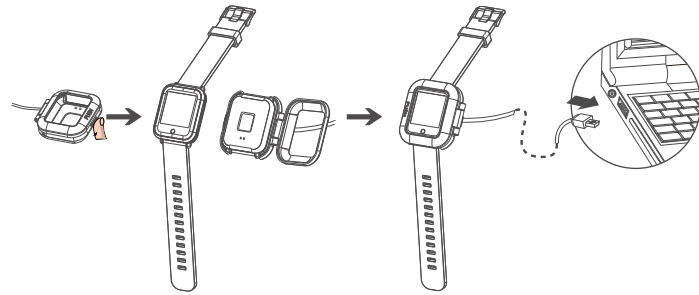


单页尺寸: 105*145mm
颜色: 4c4948 (85%黑)

GETTING STARTED:

Follow the instructions below to charge and power on your Smart Watch.

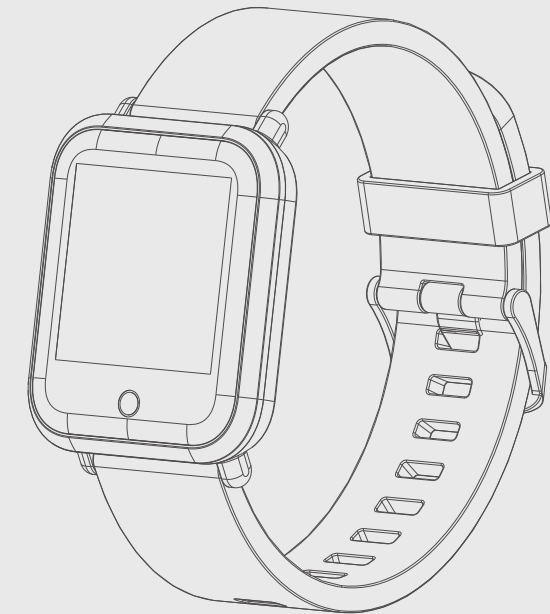


- a** Open the cover on the charger stand and place the smart watch inside (making sure the charger pins are connected). Snap the cover shut.
- b** Connect the USB charger to a suitable USB port to start charging your smart watch.
- c** Your smart watch should be fully charged in approximately 2 hours.

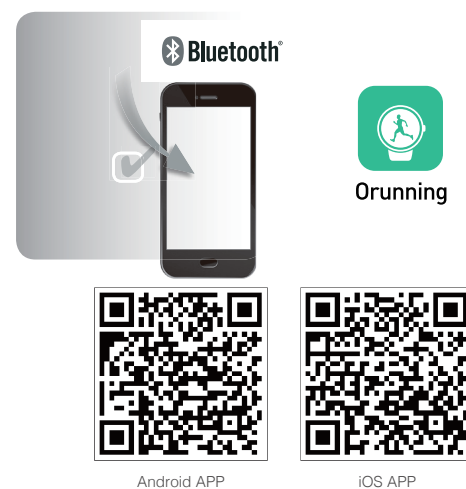
Smart Watch
Model: 364134

Goodmans

SMART WATCH



DOWNLOAD THE APP AND TURN ON BLUETOOTH



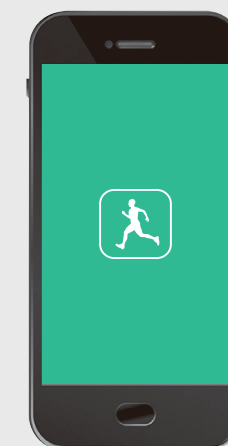
- a** Turn on the Bluetooth function on your mobile phone.
- b** Scan QR code or Install the "Orunning" app from the Apple App Store or Google Play.

CONNECT THE DEVICE



- a** Open the Orunning APP and click on 'Smart Watch Square' and then find the image of your Smart Watch. -Smart Watch Square" choose the device pictures as shown above.
- b** Select the Bluetooth name 'GMANS WATCH' to connect the app to your Smart Watch.

START THE APP



- a** Open the Orunning app and follow the on-screen instructions to setup your personal user settings.
- b** To find out about the different exercise modes and other features of your Smart Watch, refer to the user manual supplied.
- c** You are now ready to use your Goodmans Smart Watch.