



CONNECT, INFORM AND RESPOND

WITH FIRSTNET™ COMPATIBLE SOLUTIONS

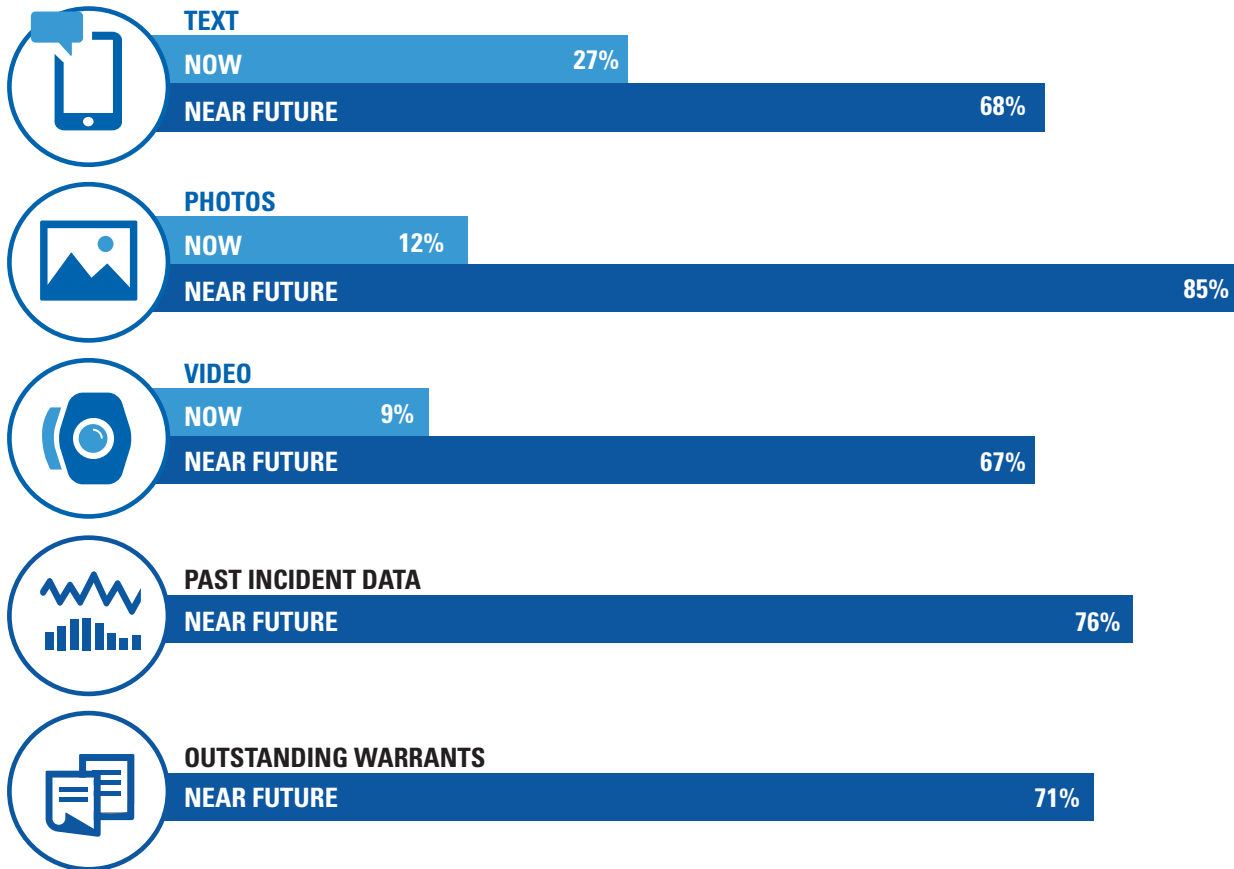
TURN PUBLIC SAFETY BROADBAND INTO REAL-TIME INTELLIGENCE

When it comes to public safety, actionable intelligence is your shield. The faster you can access vital data, the greater your chance to protect yourself and the citizens you serve. Yet, reliable public safety information can be hard to come by and difficult to share in real time — until now.

Connect first responders, dispatch and command to intelligence that flows automatically and freely across teams, applications, networks and devices. Help everyone work as one, eyes up, hands free, focused and informed. It's possible with Motorola Solutions' portfolio of FirstNet compatible devices, applications and services.

SITUATIONAL AWARENESS DEMANDS DATA

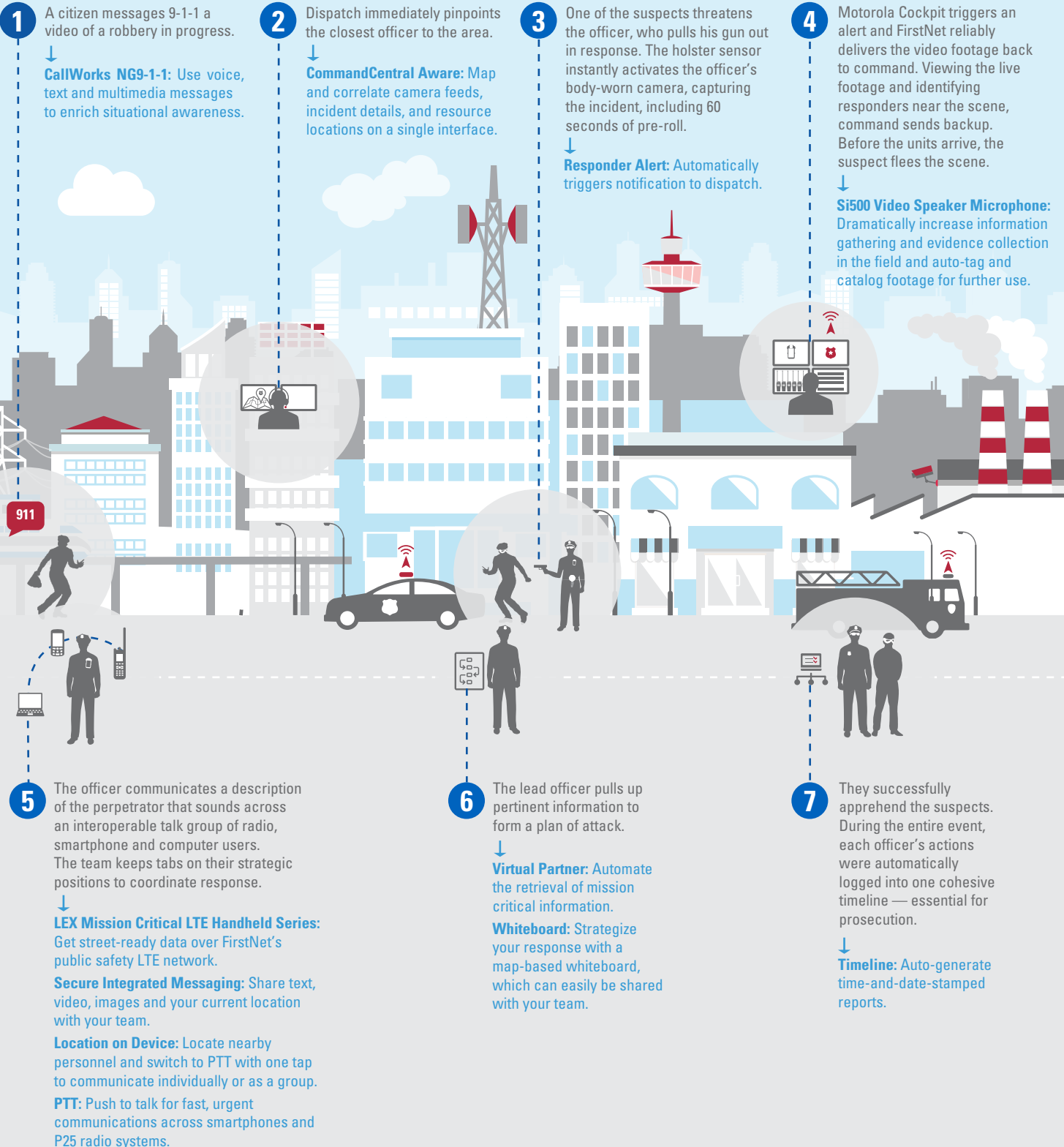
Real-time data is vital to protecting communities. While you need to harness data for situational awareness today, recent studies show the need for data to assist public safety missions will sharply increase. Make sure your agency is ready by taking advantage of FirstNet today.



Source: "2016 Law Enforcement Survey Report," Motorola Solutions, 2016



FIRSTNET COMPATIBLE PORTFOLIO IN ACTION: STAY INFORMED. STAY ALERT. STAY SAFE.





TAKE YOUR INTEROPERABILITY TO A NEW LEVEL

In the line of duty, every second counts. Favorable outcomes depend upon immediate voice and data communications, whether you're using a two-way radio, smartphone or computer. By converging the best of LMR and LTE into one interconnected platform, collaboration strengthens, and situational awareness heightens.

Experience the tight integration only Motorola Solutions can offer, as AT&T's strategic FirstNet partner. It's how everything works in sync, so every responder — from field personnel to dispatch to command — can work in unison.

Let Motorola Solutions help you subscribe to FirstNet and remove communication barriers with our FirstNet compatible platform. [Contact our experts at 1.888.325.9336](tel:18883259336) for guidance, or visit www.motorolasolutions.com/lawenforcement for more information.

