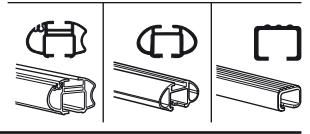
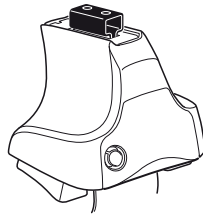


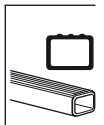
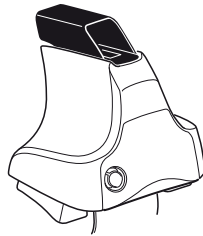
Kit 1090

NISSAN Homy Elgrand, 5-dr Estate, 97-01

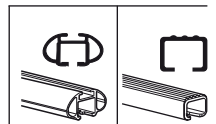
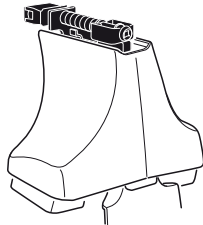
480R
754



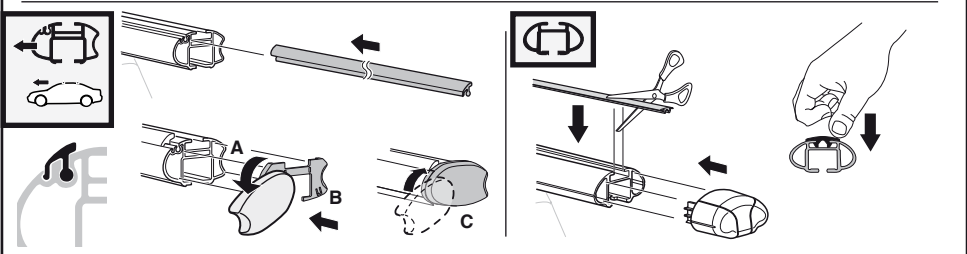
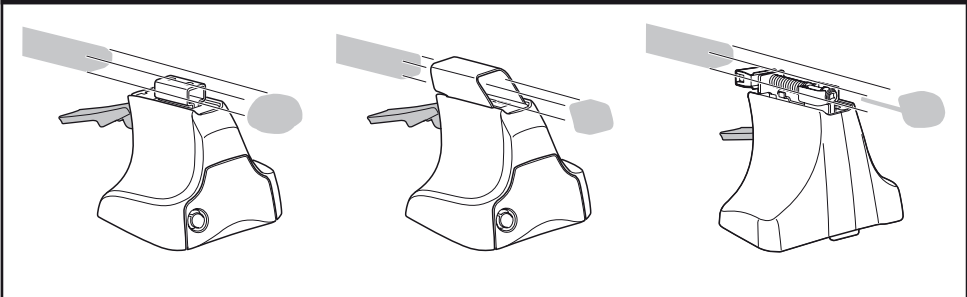
480



750



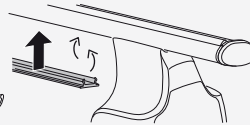
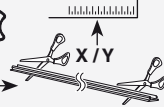
Kit



3



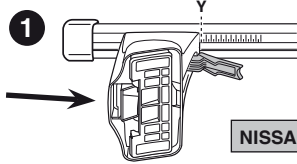
754



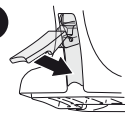
750



1



2



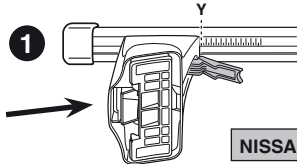
NISSAN Homy Elgrand, 5-dr Estate, 97-01

X

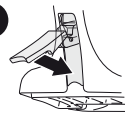
39,5



1



2



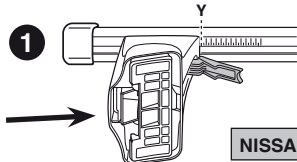
NISSAN Homy Elgrand, 5-dr Estate, 97-01

Y

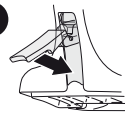
39



1



2



NISSAN Homy Elgrand, 5-dr Estate, 97-01

Z

34,5



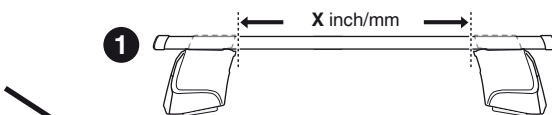
480R



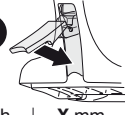
480



1



2



X inch

X mm

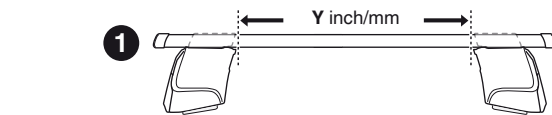
NISSAN Homy Elgrand, 5-dr Estate, 97-01

41 1/8"

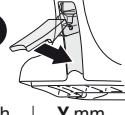
1046 mm



1



2



Y inch

Y mm

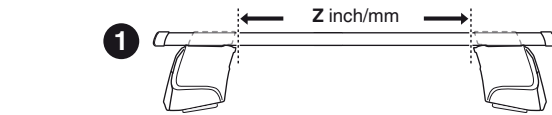
NISSAN Homy Elgrand, 5-dr Estate, 97-01

41"

1041 mm



1



2



Z inch

Z mm

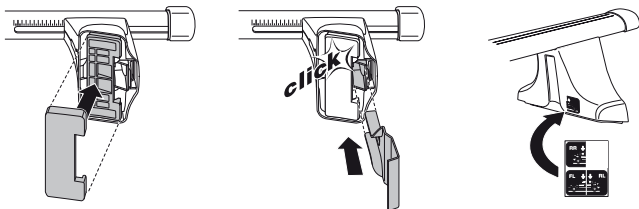
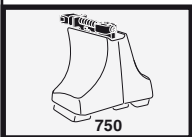
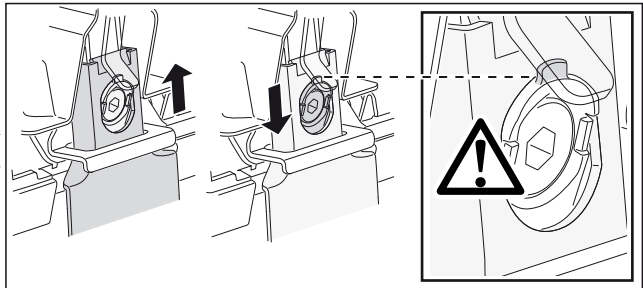
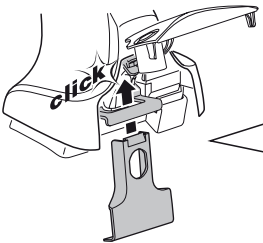
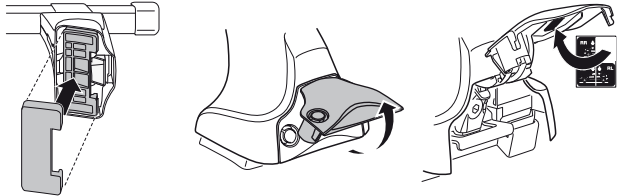
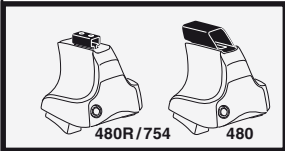
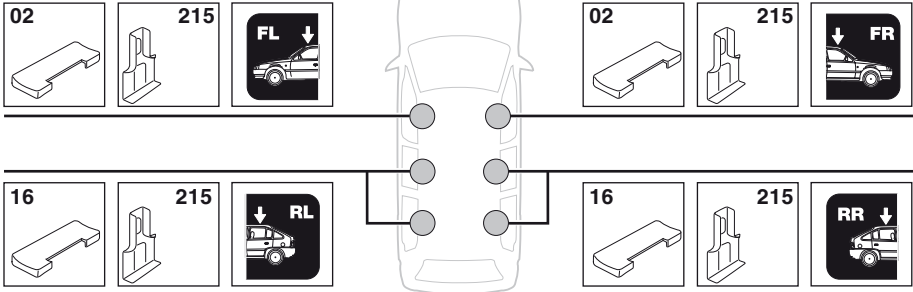
NISSAN Homy Elgrand, 5-dr Estate, 97-01

39 1/4"

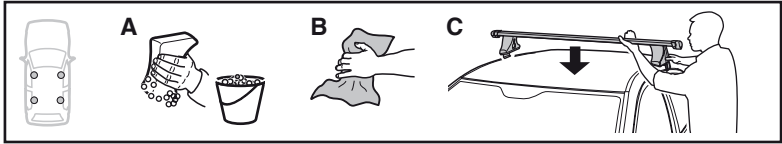
996 mm

4

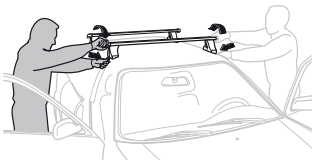
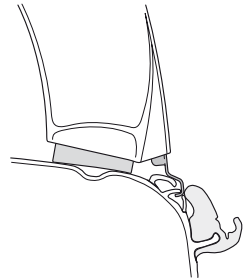
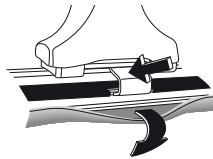
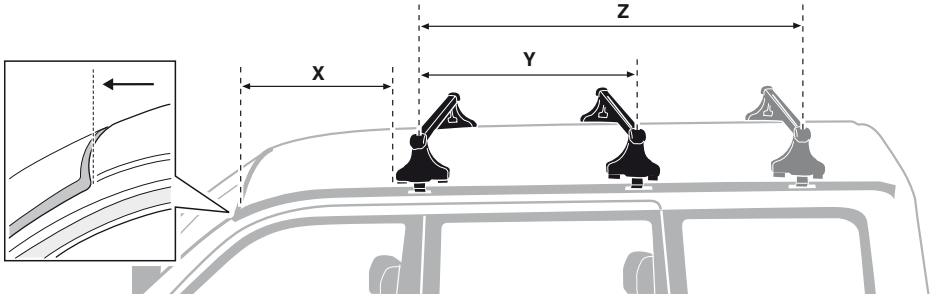
NISSAN Homy Elgrand, 5-dr Estate, 97-01



5



	X mm	Y mm	Z mm	X inch	Y inch	Z inch
NISSAN Homy Elgrand, 5-dr Estate, 97-01	770 mm	750 mm	1500 mm	30 ³ / ₈ "	29 ¹ / ₂ "	59"



- GB/US** Tighten alternately
D Die Schrauben abwechselnd anziehen
F Serrer alternativement chaque côté
NL Afwisselend aan de linker- en de rechterkant aandraaien
I Alternare il serraggio delle viti
E Apretar alternativamente
PT Aperte alternadamente
S Dra åt växelvís
FIN Kierrä vuorotellen
EST Pinguldage vaheldumisi
LAT Pievelciēt pamišus
LIT Užsukinėkite pakaitomis
PL Śruby dokręcaj naprzemiennie
RU Затягивайте попеременно

- CZ** Pokręťta bagażnika dokręcaj dokręcaj naprzemiennie.
SK Dofahujte striedavo
SLO Privijajte izmenično.
HR Naizmjenično zategnite
HU Egymástól függetlenül szorítandó
GR Σφιγίγνετε εναλλάξ
TR Dönüşümlü sıkın

中文 交替拧紧

한국어 번갈아 가며 조이십시오.

日本語 交互に締め付けてください。

ไทย ขันน๊อตแบบสลับ

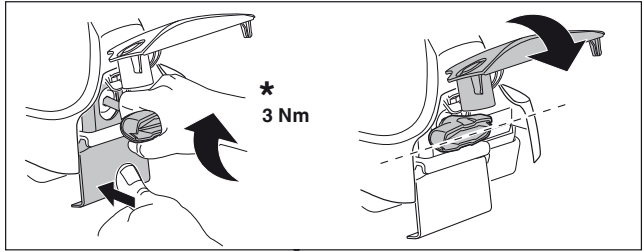
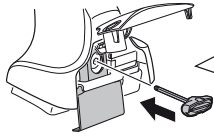
6



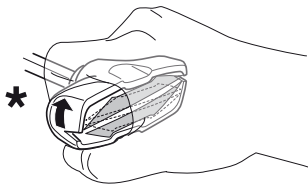
480R/754



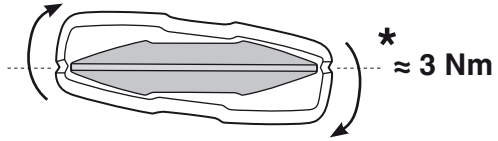
480



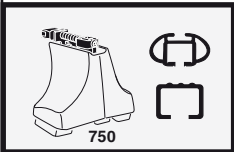
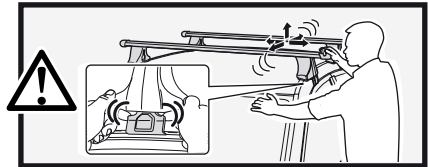
*
3 Nm



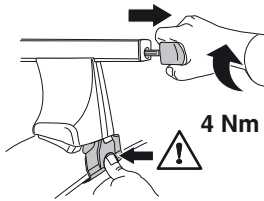
*



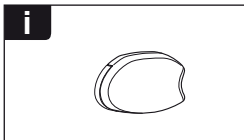
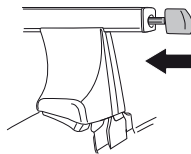
*
≈ 3 Nm



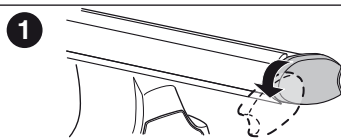
750



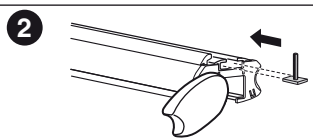
4 Nm



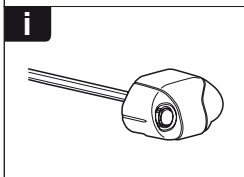
i



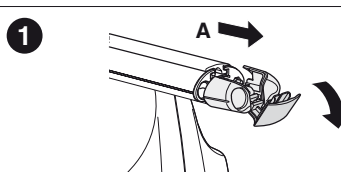
1



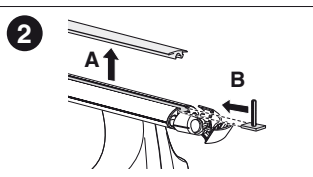
2



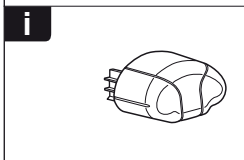
i



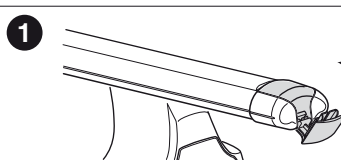
1



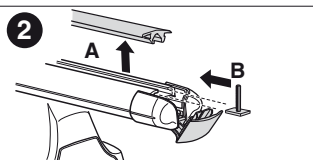
2



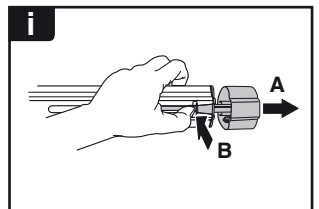
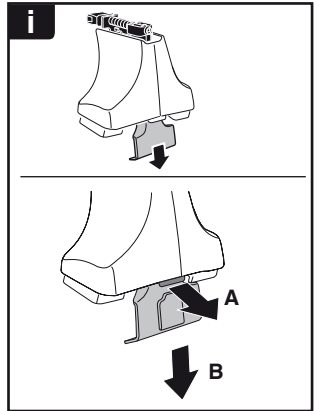
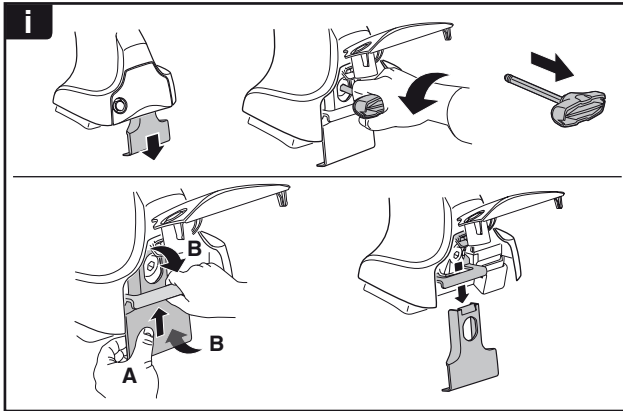
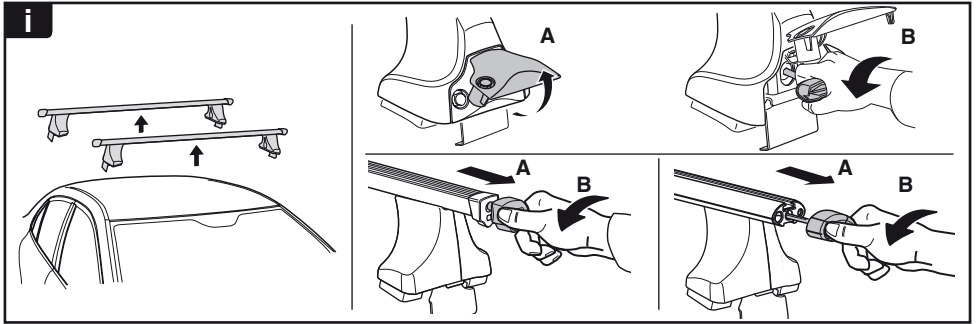
i



1



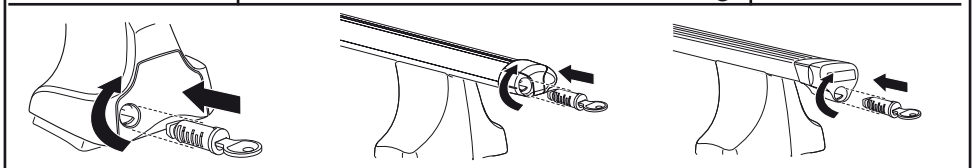
2



THULE
SWEDEN
**ONE
KEY
SYSTEM**



		(x4)
		(x6)
		(x8)
NA		(x10)
EUR		(x12)
ASIA		(x12)



WW ▶ Thule Sweden AB, Box 69, 330 33 Hillerstorp, SWEDEN
NA ▶ Thule Inc., 42 Silvermine Road, Seymour, Connecticut 06483, USA

info@thule.com
customer.service@thule.com

www.thule.com