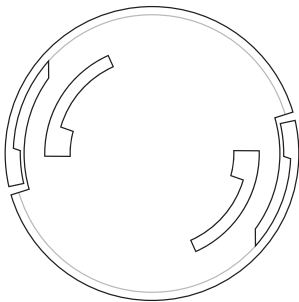



EGGTRONIC

Invisa-Qi | Invisa-Qi Pro wireless charger



Call Eggtronic customer support before returning the product to the retailer

 (844) 282-2770

USER MANUAL

Package content

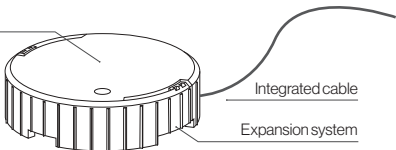
Invisa-Qi / Invisa-Qi Pro | Power Adapter | Screws (x2) | User Manual

Product Overview

Thank you for choosing Invisa-Qi Series wireless chargers. Invisa-Qi and Invisa-Qi Pro are practical and innovative phone wireless chargers, completely hidden so as to be perfectly integrated in your nightstand. The expansion mounting system makes installation quick and easy. Invisa-Qi Pro feature a LED indicator to show the exact location of the wireless charging spot and help smartphone positioning. Please read the user manual before using the product.

LED indicator

Invisa-Qi Pro only



Integrated cable

Expansion system

Safety information

Please read the following safety information carefully before using the product to prevent injury to yourself or others and to prevent damage to your device or to property.

Please keep this manual for future reference.

ELECTRICAL SAFETY WARNINGS

- Use manufacturer-approved chargers, cables and power supplies. Using generic chargers may cause the device to malfunction.
- Do not use damaged cables, power adapters or power outlets. Damaged connections may cause electric shock or fire.
- Do not damage the power cable. Doing so may cause electric shock or fire.
- Keep the cable away from hot surfaces and sharp corners. Do not carry or drag the product by its cable.
- Do not use the product if one or more of its components are damaged or defective.
- The product contains electronic parts. Keep your device dry. Humidity and

liquids may damage the electronic circuits of the device.

- Do not touch the device, cables or power outlets with wet hands. This may cause electric shock and fire.
- The product is designed for indoor use. Outdoor use is not recommended as it may subject the product to weather conditions that could damage it.

WARNINGS FOR THE USE OF THE WIRELESS CHARGER

- Do not place any metal object on the wireless charging spot, as it may overheat and cause a fire.
- Do not place any other object between the smartphone and the wireless charger.
- Do not place any unplugged receiver on the wireless charger, as this can overheat the product and cause a fire.
- Handle the charger with care. Do not drop your device. It may get damaged or may malfunction.
- Do not disassemble, modify, or repair your charger. Any alteration or modification of your device may void the manufacturer's warranty. If your device needs servicing, contact the manufacturer.
- Do not modify the product in any way. Any modification may increase the risk of injury.
- Do not bite or suck on the device. Doing so may damage the device or result in an explosion or fire. Children or animals may choke on small parts. If children use the device, make sure that they use it properly.

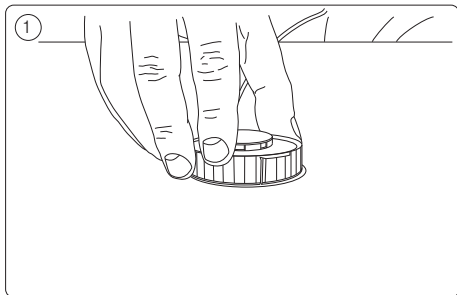
CAUTION

- The products included in the package are not toys. Keep out of the reach of children.
- Using the device other than as described in this manual may cause accidents or injuries.
- If you notice strange smell or smoke coming from your device, stop using it immediately. Continuing to use the device may result in fire or explosion.
- Do not use the device for anything other than its intended use. The device may malfunction or may cause an electric shock or fire.
- Never dispose of the device in a fire.
- Avoid exposing your device to very cold or very hot temperatures. Extreme temperatures may damage the charger and reduce the lifespan of the device.
- Do not store your device near or in heaters, microwave ovens or high-pressure containers. Your device may overheat and cause a fire.
- Do not store magnetic cards, including credit cards, phone cards and boarding passes near the product. Magnetic cards may be damaged by magnetic fields.

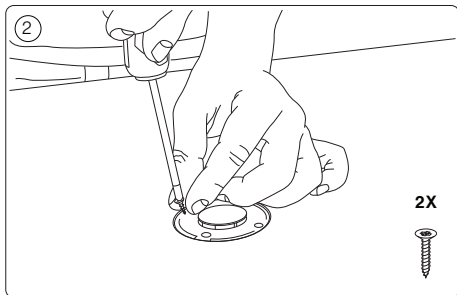
Installation

Install your Invisa-Qi or Invisa-Qi wireless charger is quick and easy:

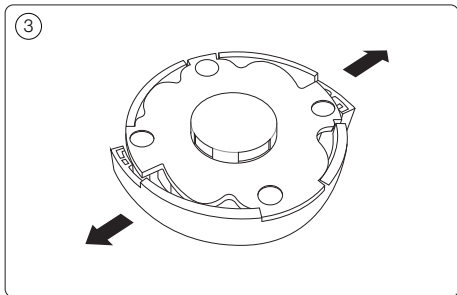
1. Drop Invisa-Qi or Invisa-Qi into the pre-cut port under the nightstand.



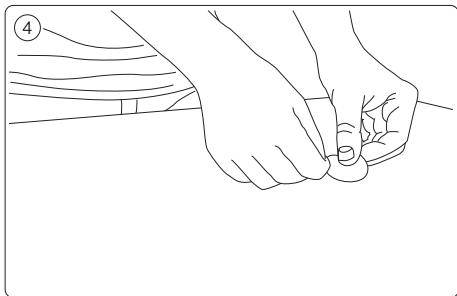
2. Use the two screws to fasten in place.



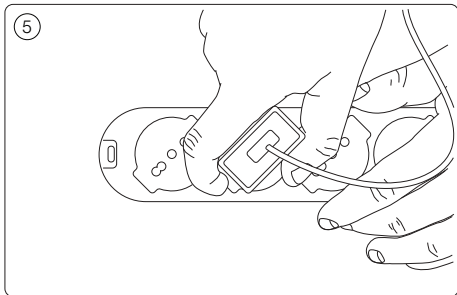
3. The screws activate the expansion mounting system.



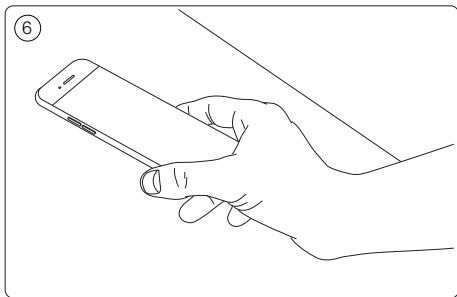
4. Place the adhesive sticker on the wireless charging spot (*Invisa-Qi* only).



5. Connect Invisa-Qi to the power adapter and then to the socket.



6. Place your smartphone on the wireless charging spot for wireless charging.



NOTE

When the smartphone is sufficiently charged, the wireless charging will stop to avoid damaging your device.

Specifications

INVISA-Qi / INVISA-Qi PRO

Size: Ø 55mm (2.16in), 15mm (0.59in) thickness | **Weight:** 55g (0.12 lbs) |
Input: 5V 3A | **Output:** wireless 10W | **Cable length:** 2m (6ft)

POWER ADAPTER

Input: 100-240V ~ 50/60Hz 0,35A | **Output:** 5V 3A

Technical specifications indicated here may be subject to change without notice, in order to improve product performance.

Troubleshooting

If the product is not working properly please check the following troubleshooting. If your situation differs from normal conditions please try to solve the issue or call customer service. For full troubleshooting visit our website at the page:

www.eggtronic.com/support/troubleshooting

*Does the power outlet work? (normal conditions: **yes**)*

*Are you using the provided power adapter? (normal conditions: **yes**)*

*Try charging your smartphone directly with the power adapter using your cable. Does it work? (normal conditions: **yes**)*

*Is the cable correctly put in the adapter? (normal conditions: **yes**)*

*Is the Invisa-Qi correctly placed into the furniture pre-cut housing? (normal conditions: **yes**)*

*Has the Invisa-Qi suffered not voluntary actions, such as fall, impact, compression? (normal conditions: **no**)*

*Is your smartphone officially compatible with Qi Wireless Charging or equipped with a working Qi Receiver? (normal conditions: **yes**)*

*Is the smartphone correctly aligned with the coil position of the Power Stand as shown in the manual? (normal conditions: **yes**)*

*Is there any metal between your smartphone and the charger? (normal conditions: **no**)*

Limited warranty

For product warranty visit our website at the page
www.eggtronic.com/support/download-area

This product is meant for use only with appropriate devices. Please consult your device packaging to determine whether this product is compatible with your particular device. Manufacturer will not be responsible for any damages you or any third party that may suffer as a result of use, intended or unintended, or misuse of this product. You agree to indemnify Manufacturer for any resulting injury or damage if the product is used with an unintended device. Product names, logos, brands and other trademarks referred to within this product are property of their respective trademark holders. These trademark holders are not affiliated with our company, our products or our website. They do not sponsor or endorse our materials.

