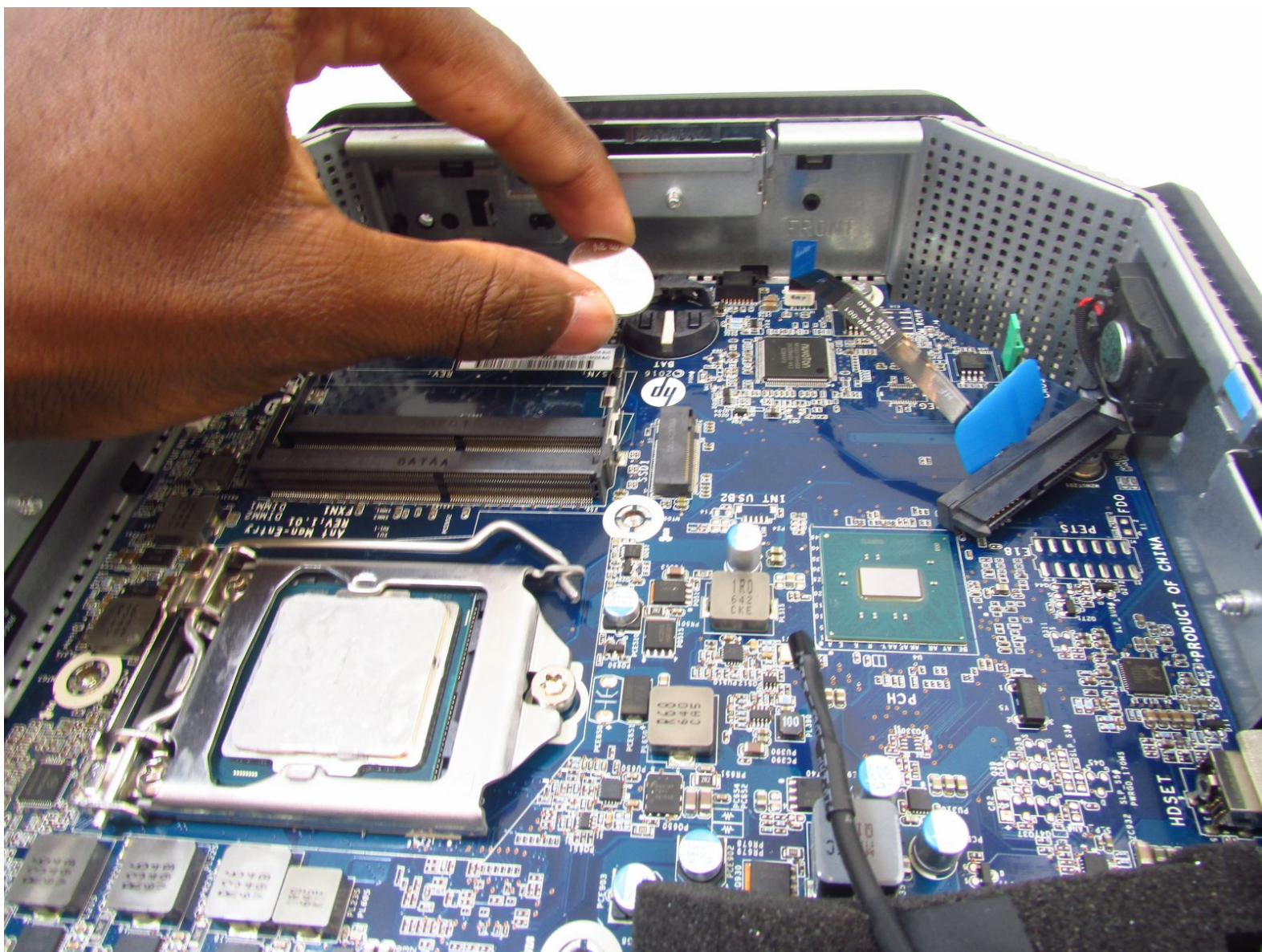




HP Z2 Mini G3 Real-Time Clock Battery Replacement

How to safely replace the Real-Time Clock Battery in the HP Z2 Mini G3 (Model No. 1LE81UP#ABA).

Written By: Christian Ogburn



This document was generated on 2020-11-28 07:53:16 AM (MST).

INTRODUCTION

The real-time clock (RTC) battery maintains the computer time in the HP Z2 Mini G3 (Model No. 1LE81UP#ABA). In case of malfunction or damage, this guide can direct end users to steps required to replace this battery.

Before starting this replacement, check out our [troubleshooting guide](#) to ensure the component actually needs replaced.

Be sure to turn off the device and disconnect the A/C power cord when working on the interior components.

Components inside the device are also subject to static damage, so try and work on a hard surface to reduce this risk.

Step 1 — Access Panel



- Turn the device so the back-side of the device is facing you.

⚠ Be sure that the power is off and the A/C power cord has been disconnected before starting. Removing hardware while the power is on could damage the device or harm yourself.

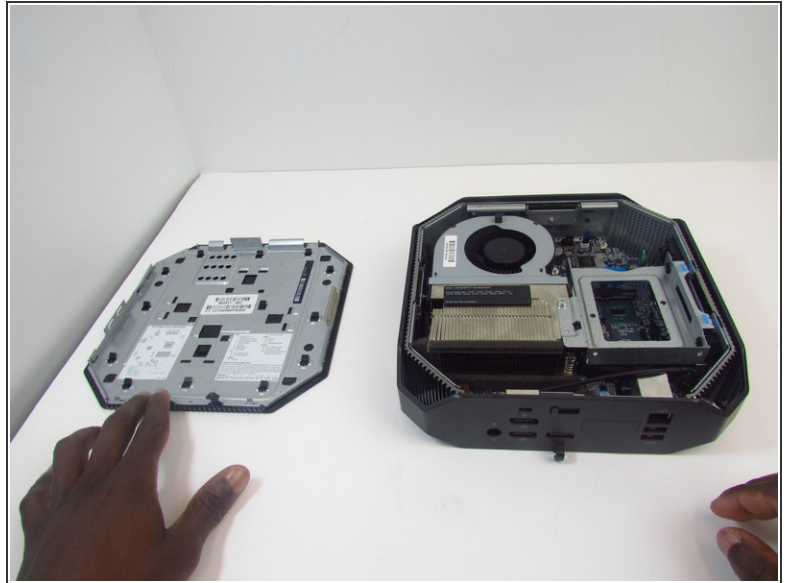
⚠ Components of the device are subject to static damage. Work on a hard, grounded surface to prevent damage to the workstation.

Step 2



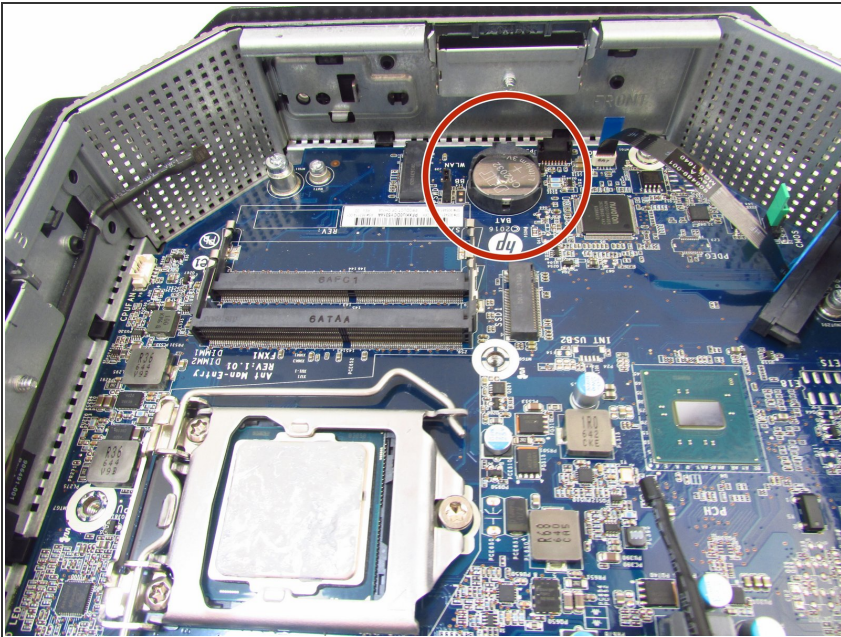
- Slide and hold the latch in the direction of the engraved arrow (to the right).

Step 3



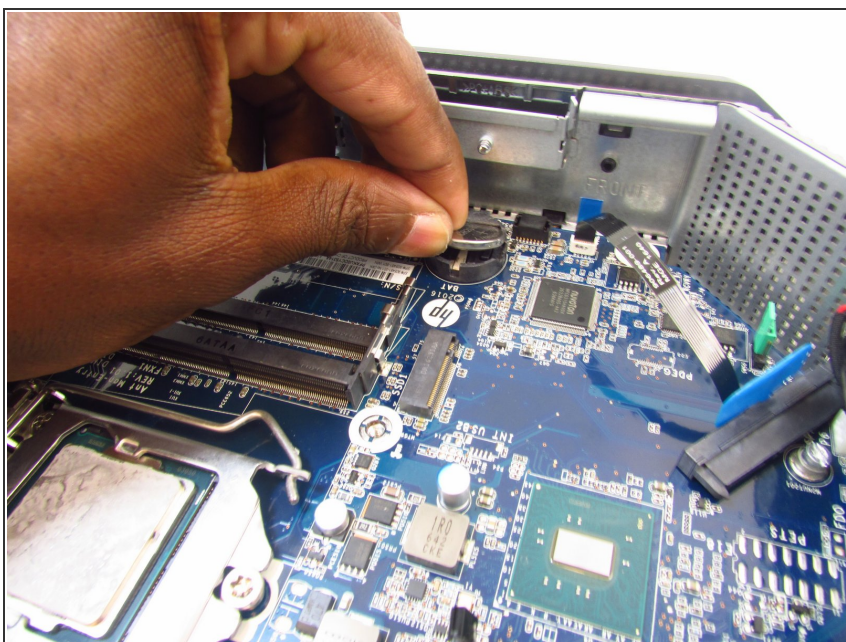
- While holding the latch, lift the access panel upwards and towards yourself and set it aside upside-down.

Step 4 — Real-Time Clock Battery



- Rotate the device so the back-side is facing you and locate the RTC battery.
- ① You may have to swing the CPU Fan and GPU Fan upwards to fully access the Real-Time Clock (RTC) Battery.

Step 5



- Press the battery down and away to free it of the latches.
- Use your hand to grab and lift the battery out of the socket.

To reassemble your device, follow these instructions in reverse order.