



The complete residential solution

Circuit Protection Resi MAX



[Clipsal.com/ResidentialProtection](https://clipsal.com/ResidentialProtection)

Life Is 

 **CLIPSAL**[®]
by Schneider Electric

Contents

- What's new in final distribution residential3
- Resi MAX gives you the entire solution4
- Essential safety for every home6
- Pre-assembled Load Centre7
- Arc Fault Detection Device8
- Wiser Link energy metering10
- 230 series meter boxes11
- Technical information12

What's new in final distribution residential

Resi MAX: The Complete Solution

Clipsal by Schneider Electric now offers the complete solution in consumer switchboards with 8, 12, 18, 24 & 36 module flush and surface mounted enclosures.

Compact and light in design, the range of Resi MAX enclosures provide cost effective solution without compromising on quality.

Need more DIN Space in your switchboard? New 24 and 36 module enclosures provide ample space for products like Wiselink and C-Bus to be installed in one switchboard.

Pre-assembled Load Centre

Your fully customised, connected Resi MAX™ system, pre-assembled and delivered. Perfect for multi-dwelling projects. Never be caught on-site missing a component again with this easy-to-order, residential circuit protection offer.

A new level of safety

The Arc Fault Detection Device (AFDD) is an easy-to-install, cost-effective solution to help keep your customers safe from electrical fires caused by arc faults.

AFDDs safeguard against electrical fires by detecting even the smallest electrical arcs caused by cable or electrical contact damage and disconnect power before the resulting heat starts a fire.

Solar monitoring and alarming for Wiselink

Wiselink now measures solar PV production in real time. Solar production can be displayed in kWh and converted to dollar amount saved. This information is also available in detailed graphs, allowing daily, weekly, monthly, and yearly comparisons.

Download the latest Wiselink app and you will be able to set alarms on energy consumption by sub-circuit (at the CT level). Receive push notifications or emails when a particular circuit, such as your HVAC or pool pump, is about to reach the energy target for the month, increasing usage awareness and helping your customers reduce their bills.



Resi MAX gives you the entire solution

With products to protect Australian homes from top to bottom, the Resi MAX range has expanded. Now including a comprehensive range of consumer switchboards from 8 pole to 36 pole and surge arrestors along with residential circuit protection, Resi MAX is the only name you need to remember for a whole suite of products.

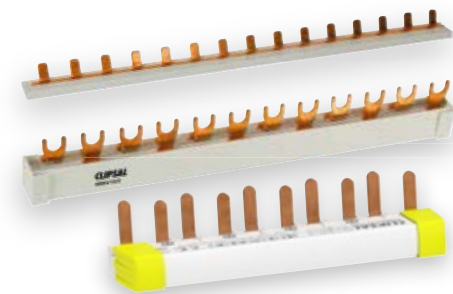
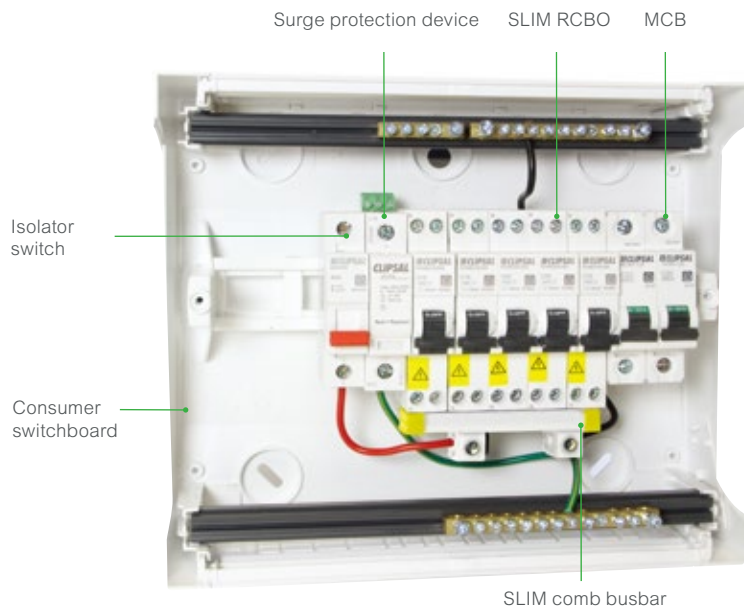
Resi MAX range

From miniature circuit breakers and isolator switches, to RCDs and RCBOs, Clipsal's Resi MAX range offers unrivalled flexibility.

All Resi MAX products fit easily into Clipsal's quality range of consumer switchboards and meter boxes. Comb busbars and accessories are also available to simplify the installation.

A complete product range of electrical solutions for Australian homes

- 8 module to 36 module electrical distribution consumer switchboards (flush-mounted or surface-mounted)
- Circuit protection
- Switches and connectors



Consumer switchboards

Optimised to complement the Resi MAX range, these attractive, economical consumer switchboards are designed with the electrical contractor in mind.

Available in flush- and surface-mounted versions, our switchboards are easy to install and offer generous wiring room, making connecting and running cables a breeze.



Surface mount

Flush mount

SLIM RCBO

The Resi MAX range also offers a SLIM RCBO. Rated at 4.5 kA, it achieves a 6 kA rating when combined with the HRC service fuse, which every residence on the grid is provided with. This feature provides peace of mind when using the SLIM RCBO on any residential application.

Surge protection device

When lightning strikes, there are no second chances. The Resi MAX range of surge protection devices won't let you down.



Essential safety for every home

Flexible installation

- The Resi MAX RCBO range provides top and bottom line load compatibility.

Standards

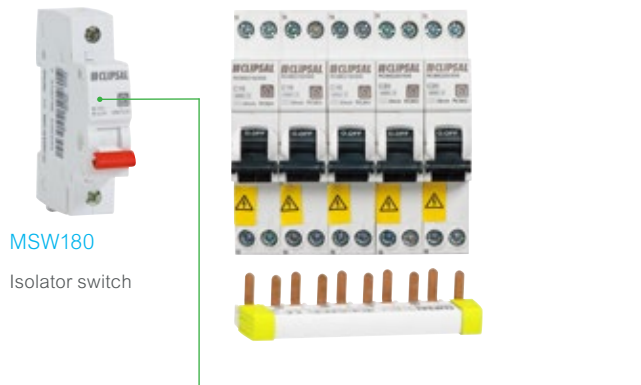
- The Resi MAX range of miniature circuit breakers (MCBs), residual current devices without over current protection (RCCBs), residual current circuit breaker with over current protection (RCBOs), and isolators complies with the latest standards — AS/NZS60898-1, AS/NZS61008-1, AS/NZS61009-1, and AS/NZS 60947-3 respectively. The Resi MAX range of switchboards is compliant with AS/NZS61439-3.

Reliable material

- Housing for all devices is made of sturdy, self-extinguishing material. Each circuit protection device has lift-up terminals with combination head screws. Additional safety is provided with 'ON' and 'OFF' marking in contrasting colours on toggle mechanisms.

Time saving

- The Resi MAX range provides the complete solution for circuit protection. Busbar-compatible RCBOs are equipped with insulated slots and deep bottom cog-rail terminals, allowing for a quick fit-off. This, along with many other features, ensures Resi MAX saves you time on installation.



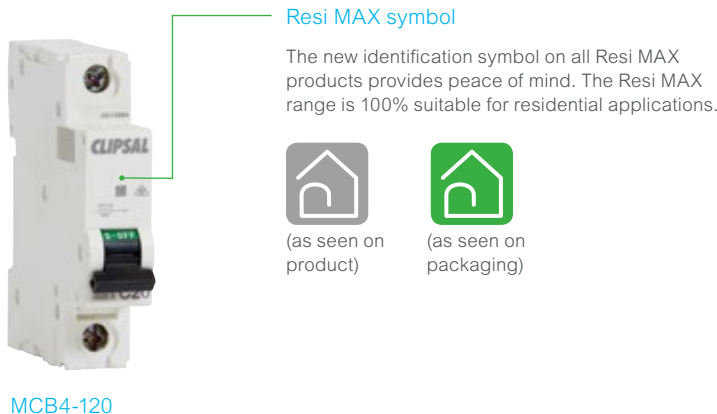
MSW180
Isolator switch

Compatibility

Optimised for SLIM RCBO, the SLIM comb busbar ensures that wiring effort is reduced, making your installation tidy and time/cost effective.

Convenience

- Two in one system
- New design for easier installation
- Ease of wiring
- Compact and light



MCB4-120

Resi MAX symbol

The new identification symbol on all Resi MAX products provides peace of mind. The Resi MAX range is 100% suitable for residential applications.



(as seen on product)



(as seen on packaging)



Top and bottom line load compatible

SLIM RCBO available to save valuable switchboard space by combining the functionalities of an RCD and MCB within 18 mm.

RCBE220/30S

Combination residual Current device SLIM (RCBO)



Pre-assembled Load Centre

Customised, pre-assembled Resi MAX system is ready to install

Why choose the Resi MAX Pre-assembled Load Centre?*

- You can configure the load centre specifically for your customers from our extensive range of systems
- A residential circuit protection system in one complete solution
- Reduces your installation time on site
- You're fully covered without the worry of missing components
- Perfect for multi-dwelling projects

Connect customers to their home energy

Wiser Link connects your customers to their electricity, gas, solar, and water use anywhere, anytime. This system will also help you achieve points for multi-unit residential green building accreditations.

Order today

1. Contact your local wholesaler representative for your configurator form
2. Select your plastic switchboard
3. Configure it with a wide range of circuit protection
4. Upgrade your Load Centre with our residential energy management solution
5. Send to your local wholesaler representative
6. Await your quote

Once approved, your order will be on its way. Resi MAX offers unrivalled flexibility without compromising on quality.

The easier, quicker way to configure your plastic switchboards has arrived.



*Minimum order of 50 pre-assembled load centres



Arc Fault Detection Device

Offer your customers the best protection from electrical fires

Every year in Australia there are over 10,000 house fires resulting in death, injury, and millions of dollars' worth of property damage.

In every building, the electrical installation must be protected against fires caused by electricity. Even a minor electric fault can have serious consequences. With AFDDs you will set new standards for reliable protection against fires caused by electricity.

Stay safe with our new AFDD — recommended in every home!

How electric arcs cause fires

An electric arc is a discharge of electricity inside the insulation of an electrical connection or damaged wire. Electric arcs occur in a specific location and set off a chain of events that can ultimately cause a fire.

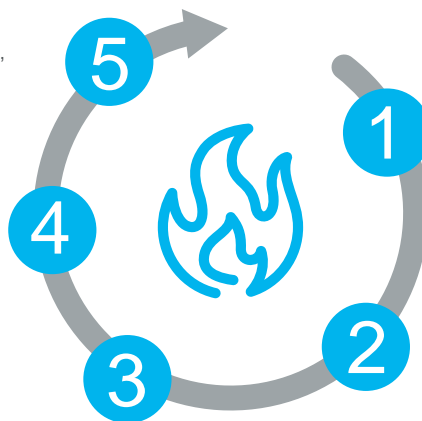
There are two types of electric arc

- Parallel arcs, which occur between two different conductors
- Series arcs, which occur between two parts of the same conductor

The fire then spreads to nearby curtains, wall coverings, and furniture.

The vicious cycle continues, and a subsequent electric arc catches the burned electrical insulation on fire.

The burned insulation acts as conductor through which current flows, generating even more carbon.



The wire or connection becomes abnormally hot or suffers physical damage.

Over time, a hot spot develops or a pathway is established allowing current to pass between two conductors; as a result, carbon deposits form on the insulation.



Highlights

- Preventive protection from electrical fires
- Reliable coverage of the protection gap
- Reliable disconnection of the circuit if hazardous arcing faults occur

Maximise protection for residential installations and public buildings.

Closing the critical protection gap

Electrical installation circuits are usually safeguarded by proven protection, including fuse systems, MCBs, and RCDs. These are not suitable for detecting and safely disconnecting serial arcing faults. This protection gap is now being closed with AFDD.

Important circuits to protect

- Bedroom and living room socket circuits
- Circuits susceptible to damage (surface-mounted, outdoor installation, etc.)
- Ageing circuits where contacts may have broken down or vibrated loose

Adding a Clipsal AFDD to a home's circuit protection will offer your customers the best available defense from electrical fires caused by arc faults.

For more information head to: clipsal.com/ArcDetection





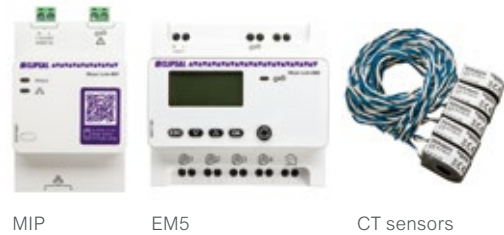
Wiser Link energy metering

Smarter energy and solar monitoring

Wiser Link energy management assistant is an app-based system that allows residential consumers to monitor their electricity, gas, and water consumption behaviours as well as their solar PV production to help reduce their electricity bills.

Benefits

- Achieve points for multi-unit residential green building accreditations
- Easy and fast to install: Mount the 2 DIN rail products, configure the loads, and connect to internet



MIP

EM5

CT sensors



- Set alerts to be sent automatically when abnormal events occur (power outage) or when you reach a monthly energy target per load.
- Compare consumption trends to previous months. All data is stored securely.
- Display kWh and \$ total home energy consumption by meter: Electricity (optional module for gas and water).
- Display kWh and \$ energy consumption by specific area or appliance. For example, air conditioning, kitchen loads, outdoor pool, or hot water.
- Real-time home energy consumption and solar production with detailed graphs.
- Analyse and download your energy data with daily, weekly, monthly, and yearly graphs.
- Measure solar PV production in kWh and \$ to see how much money your customers are saving.*

*Optional feature

230 series meter boxes

Unmatched flexibility, fully compliant

Exterior meter boxes act as enclosures for your customers' circuit protection products. They offer protection while providing easy access to electrical equipment during maintenance.

The Clipsal meter box has been designed with safety and security in mind. The combination of a wide access panel meter enclosure and generous wiring room offer the perfect solution for domestic outdoor locations.

Common features

- Galvanised steel meter box
- Overall dimensions H680 x W470 x D279 mm — except South Australia meter box
- Ingress protection rating of IP23*
- Compliant with local service and installation rules
- Sliding bracket and lead tie-off point
- Door retaining strap
- Lockable door
- Wide meter panel
- Aesthetic design

NSW/ACT meter box

Sliding bracket

Includes sliding bracket and lead tie-off point. Suits temporary and permanent installations



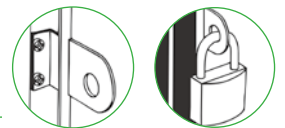
Lead tie-off point



No powder coating — Paint with the colour of your choice

Wide meter panel is double hinged: It swings forward or can be fully removed for easy access and wiring

Lockable door



Door retaining strap



Door retaining strap to keep door open for convenience during installation and maintenance

State-based meter boxes

Specifically designed for Australian conditions and has a fully compliant solution tailored for the ACT, NSW, QLD, SA, TAS, and VIC.



Queensland
Supplied with neutral and earth bar grid assembly



South Australia
Supplied with one meter isolator; Din rail with 24 poles capacity



Victoria
Supplied with a fuse isolator and neutral link



Tasmania
Supplied with neutral and earth bar grid assembly

*See technical details

Circuit protection technical information

Resi MAX consumer switchboard

Catalogue numbers have been selected to help reference the number of rows and modules per row in each product. For example RMXE108S = 1 row of 08 modules. RMXE312F = 3 rows of 12 modules

Catalogue number	Description
RMXE108S	Resi MAX switchboard — 1 row, 8 modules, surface-mount
RMXE112S	Resi MAX switchboard — 1 row, 12 modules, surface-mount
RMXE118S	Resi MAX switchboard — 1 row, 18 modules, surface-mount
RMXE212S	Resi MAX switchboard — 2 rows, 24 modules, surface-mount
RMXE312S	Resi MAX switchboard — 3 rows, 36 modules, surface-mount
RMXE108F	Resi MAX switchboard — 1 row, 8 modules, flush-mount
RMXE112F	Resi MAX switchboard — 1 row, 12 modules, flush-mount
RMXE118F	Resi MAX switchboard — 1 row, 18 modules, flush-mount
RMXE212F	Resi MAX switchboard — 2 rows, 24 modules, flush-mount
RMXE312F	Resi MAX switchboard — 3 rows, 36 modules, flush-mount



RMXE112S



RMXE112F

Main switches

Catalogue number	Description
MSW140	1P 40 A 240 VAC
MSW180	1P 80 A 240 VAC
SW1100	1P 100 A 240 VAC
MSW240	2P 40 A 415 VAC
MSW280	2P 80 A 415 VAC
SW2100	2P 100 A 415 VAC
MSW340	3P 40 A 415 VAC
MSW380	3P 80 A 415 VAC
SW3100	3P 100 A 415 VAC



MSW180



MSW280



MSW380

Surge protection devices

Catalogue number	Description
920RM/1	Resi MAX surge arrester 1P I _{max} =20 kA
920PM	Cartridge I _{max} =20 kA Resi MAX



920RM/1



920PM cartridge

SLIM one module MCB/RCD combinations (RCBO)

Catalogue number	Description
RCBE206/30S	6 A 1P+N 30 mA C A 4500 A (6 kA with fuse)
RCBE210/30S	10 A 1P+N 30 mA C A 4500 A (6 kA with fuse)
RCBE216/30S	16 A 1P+N 30 mA C A 4500 A (6 kA with fuse)
RCBE220/30S	20 A 1P+N 30 mA C A 4500 A (6 kA with fuse)
RCBE225/30S	25 A 1P+N 30 mA C A 4500 A (6 kA with fuse)
RCBE232/30S	32 A 1P+N 30 mA C A 4500 A (6 kA with fuse)



RCBE220/30S

Residual current devices (RCCB)

Catalogue number	Description
RCD240/30	2P 40 A 30 mA AC
RCD263/30	2P 63 A 30 mA AC
RCD440/30	4P 40 A 30 mA AC
RCD463/30	4P 63 A 30 mA AC



RCD240/30



RCD440/30

Miniature circuit breakers

Catalogue number	Description
MCB4-106	1P 6 A C 240 V 4500 A (6 kA with fuse)
MCB4-108	1P 8 A C 240 V 4500 A (6 kA with fuse)
MCB4-110	1P 10 A C 240 V 4500 A (6 kA with fuse)
MCB4-116	1P 16 A C 240 V 4500 A (6 kA with fuse)
MCB4-120	1P 20 A C 240 V 4500 A (6 kA with fuse)
MCB4-125	1P 25 A C 240 V 4500 A (6 kA with fuse)
MCB4-132	1P 32 A C 240 V 4500 A (6 kA with fuse)
MCB4-140	1P 40 A C 240 V 4500 A (6 kA with fuse)
MCB4-150	1P 50 A C 240 V 4500 A (6 kA with fuse)
MCB4-163	1P 63 A C 240 V 4500 A (6 kA with fuse)



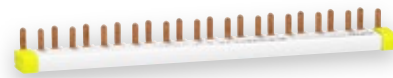
MCB4-120

Busbar and accessories

technical information

SLIM comb-busbars for SLIM RCBO

Catalogue number	Poles	Phase modules
RMXPH105	1P+N	5 modules
RMXPH112	1P+N	12 modules
RMXPH124	1P+N	24 modules
RMXPH312	3P+N	12 modules
RMXPH324	3P+N	24 modules
RMXPE110	1P+N	End cap (set of 10)
RMXPE310	3P+N	End cap (set of 10)
RMXPT120		Teeth cover (set of 20)
RMXPC1	1P+N	Cable connector (set of 5)
RMXPC3	3P+N	Cable connector (set of 4)



RMXPH112



RMXPC1



RMXPT120



RMXPE110

Note: Connectors are not supplied with the comb busbar — need to be ordered separately.

Insulated comb-type busbars

Catalogue number	Poles	Phase	Current rating
4BB1/24	24	1	80 A
4BB1	56	1	80 A
4BB2	56	2	80 A
4BB3	56	3	80 A

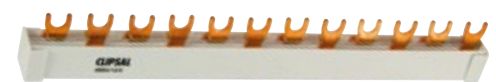


4BB1

Note: Connectors are not supplied with the comb busbar — need to be ordered separately.

Cog rail busbars

Catalogue number	Poles	Phase	Current rating
4BB4/12	12	1	80 A
4BB4/18	18	1	80 A
4BB4/57	57	1	80 A
4BB4/12/2	12	2/1+N	80 A
4BB4/18/2	18	2/1+N	80 A
4BB4/57/2	57	2/1+N	80 A
4BB4/12/3	12	3	80 A
4BB4/18/3	18	3	80 A
4BB4/57/3	57	3	80 A



4BB4/12/2

Accessories technical information

Cog rail busbar end caps

Catalogue number	Phase
4BBTC1	Busbar 1-phase end cap
4BBTC3	Busbar 2-phase, 3-phase end cap



4BBTC1

Insulated comb-type busbar connector

Catalogue number	Phase
4BB5	Busbar connector to suit up to 25 mm conductors



4BB5

Terminals

Catalogue number	Phase
27060	Expanding 35 mm terminal to suit one module MCBs and switches
4XT3	3 x 16 mm neutral link to suit termination of RCD neutrals



27060



4XT3

Pre-assembled load centre technical information

For more details, visit: clipsal.com/PreAssembled

Arc Fault Detection Device technical information

For more details, visit: clipsal.com/ArcDetection

Wiser Link technical information

Wiser Link

Catalogue number	Description
EER70600	Wiser Link MIP (Internet communication module)
EER71000	Wiser Link EM5 Kit (Energy meter + 5 CT sensors)
EER71200	Wiser Link EM5 Extra CT sensors (set of 5)



Meter box technical information

Tasmania

Catalogue number	Description
230DRAT	21-module switchboard; Dimensions: H680 x W470 x D280 mm
230SMT	21-module switchboard; Dimensions: H860 x W464 x D282 mm

South Australia

Catalogue number	Description
230DRAS1MI	24-module switchboard and space for a single meter complete with meter isolator MCB 1P 63 A 6k A; Dimensions: H612 x W470 x D260 mm
230DRAS2MI	24-module switchboard and space for multiple meters with meter isolator MCB 1P 63 A 6k A; Dimensions: H805 x W505 x D260 mm
230DRAS3	30-module switchboard and space for multiple meters; Dimensions H590 x W612 x D260 mm
230MIC163	Meter isolator MCB 1P 63 A C curve 6 kA enclosure and lock off device
230MIC363	Meter isolator MCB 3P 63 A C curve 6 kA enclosure and lock off device
230DRASL	Key locking unit

Queensland

Catalogue number	Description
230DRAQ	21-module switchboard and space for a single meter box; Dimensions: H680 x W470 x D280 mm
230DRAQTP	21-module switchboard and space for a single meter box (suitable for temporary supply AS/NZS3012 compliant); Dimensions: H680 x W470 x D280 mm

New South Wales

Catalogue number	Description
230DRANS	NSW meter box with black laminated meter panel; Dimensions: H680 x W470 x D280 mm
230DRANSAP	Spare meter panel for NSW meter box; Meter panel: 630 mm x 440 mm
230DRANSAD	Spare door; not powder coated
230DRANS AK	Spare kit; sliding bracket and lead tie-off point

Victoria

Catalogue number	Description
230DRAVL	21-module switchboard and space for a single meter box with service fuse lock; Dimensions: H680 x W470 x D280 mm
230MV	Meter enclosure only; Dimensions: H430 x W470 x D280 mm
230PBV	Bracket for temporary power service pole, suits 230DRAVL Note: A pipe and bracket are required for temporary power service
230DRAVAD	Accessory Door; Assembly 230DRA series

Surface-mount moulded enclosures

Plastic enclosures

Catalogue number	Description
To suit DIN rail-mounted equipment, available in White Electric (WE) only.	
4CC1-WE	1-module, surface-mount; Dimensions: H133 x W35 x D69 mm
4CC2-WE	2-modules, surface-mount; Dimensions: H133 x W53 x D69 mm
4CC3-WE	3-modules, surface-mount; Dimensions: H133 x W70 x D69 mm
4CC4-WE	4-module, surface-mount; Dimensions: H153 x W88 x D69 mm

Life Is 



The complete residential solution
Clipsal.com/residentialprotection

Schneider Electric (Australia) Pty. Ltd.
33-37 Port Wakefield Road,
Gepps Cross, South Australia, 5085 PO Box 132, Enfield Plaza,
South Australia, 5085

Consumer Support Enquiries
Phone: 1300 669 925
Website: clipsal.com/contactus

National Customer Care (trade only)
Phone: 1300 369 233