

Panasonic



Ventilation Fans

Why is ventilation necessary?

Today's homes are designed and built to improve energy efficiency. However, these airtight homes may actually cause health problems due to the build-up of pollutants and uncirculated stale air. What do they need? Mechanical ventilation!

Mechanical ventilation is used to remove stale, moist polluted air and replace it with fresh outside air. Two widely used methods in today's building industry are continuous and intermittent ventilation.

Continuous Ventilation

Sometimes referred to as general, central, whole-house or primary ventilation, continuous ventilation is used to remove stale air and provide fresh air on a slow continuous basis. A well-designed airtight home can generally use low volume continuous ventilation.

Intermittent Ventilation

Sometimes referred to as spot, local or secondary ventilation, intermittent ventilation is used to capture and remove pollutants quickly at the source. Pockets of excessive moisture and pollutants can build up in the bathroom, kitchen, laundry, utility room and home office. This secondary process serves to exhaust these problem areas quickly, before bad air can spread throughout the home. Both systems exhaust pollutants from the air, but intermittent ventilation is more effective in concentrated areas.

Ideally, an airtight home designed with both continuous and intermittent ventilation will contribute to a healthy and comfortable living environment for the entire family

**Fresh air driven by fresh ideas.
Breathe new life into your environment
with Panasonic Ventilation.**

High-performance ventilation solutions

At Panasonic, improving indoor air quality (IAQ) is important to us. The idea of delivering a breath of fresh air to our customers is consistent with a simple mission statement eloquently articulated by our founder nearly a century ago: Panasonic serves society with high-quality products that make peoples' everyday lives more healthy, productive and enjoyable. This guiding principle continues to drive everything we do.

We design and build all of our fans to ensure we provide products of the highest quality. Our ventilation fans combine super quiet operation with low energy consumption and long service life. They remove excess moisture that could otherwise damage your business or home's structure and they clear airborne pollutants and odours from the air making it healthier and more pleasant to breathe. Contractors, builders, architects and homeowners rely on us for our quality and for the wide array of solutions we offer—from bathroom fans with both motion and humidity sensors to remote in-line fans.

Fan Benefits

Powerful & Quiet — Fully enclosed DC and AC condenser motors assure remarkable performance and quiet operation at industry standard .25 w.g. static pressure (Installed Performance).

Long Life — Permanently lubricated motors are designed for trouble-free, continuous operation.

Easy Installation — Detachable adaptor assembly, adjustable mounting brackets, fan/motor units that easily detach from the housing and uncomplicated wiring all lend to user-friendly installation. Double hanger bar systems allow for ideal positioning.

Flexibility — our **Flex-Z-Fast™** bracket with articulating joints provides even more flexible, fast and easy installation on select models.

Energy Savings — For high energy efficiency, input wattage readings are among the lowest in the industry.



Advanced Ventilation Solutions



PG. 6-9

NEW

WhisperGreenSelect™

Our ground-breaking IAQ solution is revolutionizing the ventilation fan industry with a unique set of features that enable both customization and easy installation.



PG. 10-11

WhisperSense™ • WhisperSense-Lite™

Exclusive dual sensor technology reacts to both motion and humidity, automatically turning the fan on or off.



PG. 12-13

WhisperCeiling™ • WhisperLite™

This generation of fans are designed to be quieter and more energy efficient than ever.



PG. 14-15

NEW

WhisperFit EZ™ • WhisperFit EZ™ Lite

With built-in Pick-A-Flow™ Speed Selector, a housing depth of just 5-5/8", and Flex-Z-Fast™ installation bracket, these compact fans minimize space requirements and are easy to install making them ideal for renovations.



PG. 16-17

WhisperValue® • WhisperValue-Lite™

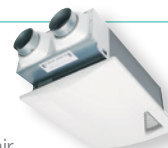
Incredibly slim ventilation fans for any application, including wall. The housing depth is just 3-3/4" so space requirements and installation time are minimized.



PG. 18-19

WhisperComfort™

Our (ERV) Energy Recovery Ventilating fan balances air pressure by supplying fresh exterior air while exhausting stale interior air.



PG. 20

WhisperWarm™

Add 'warmth' to your bathroom with this ventilation fan and heater combo. It's quiet and warms up quickly. Also available in a lighted version with a 4-Watt night-light.



PG. 21

WhisperWall™

This through-the-wall fan requires no duct work when installed on an outside wall. It's easy to install and super quiet. The advanced motor design ensures long life and is energy efficient.



PG. 22-23

WhisperRecessed™ • WhisperRecessed™ LED

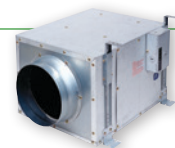
The design solution for a bathroom fan/light combination. You can select a unit with CFL or one with an LED. This quiet energy efficient ventilation fan is hidden above the ceiling.



PG. 24-25

WhisperLine™

Remote mounted in-line ventilation fans for single or multiple inlets.



PG. 26-27

Designer Grilles & Accessories

Choose an optional grille to enhance your décor. **Passive inlet** draws outside air into your home to balance air pressure.



Designer Grille

7-3/8"
Depth
WhisperGreenSelect™
 VENTILATION FAN

Unique Plug'N Play™ modules provide a customizable solution that is revolutionizing the ventilation fan industry.

- Customizable, all-in-one fan and fan/LED light combinations
- Pick-A-Flow™ speed selector – one fan, you choose the CFM
- Unique Plug'N Play™ modules provide up to three value added features
- Revolutionary DC motor with SmartFlow™ technology ensures optimal CFM output
- Replaceable, GU24 base LED lamps provide warm, energy efficient illumination
- Flex-Z Fast™ bracket provides flexible, fast and easy installation
- Can be used to comply with ASHRAE 62.2, LEED for Homes, and ENERGY STAR® for Homes 3.0
- Integrated dual 4" or 6" duct adaptor (up to 110 CFM models)
- Built-in metal flange provides blocking for penetrations through drywall as an air barrier, and assists with the decrease in leakage in the building envelope during blower door testing
- Fits in 2 x 8 construction
- Protected by cUL Class 2 Power Unit
- cUL listed for tub/shower enclosure when used with a GFCI protected circuit
- 6-year warranty on DC motor, 5-years on LEDs, 3-years on parts
- Optional ceiling radiation damper or designer grille available for WhisperGreenSelect™ models (See pages 26-27 for details)

DC Motor with SmartFlow™ Technology

WhisperGreen Select™ features the same revolutionary DC motor that comes with our WhisperGreen line of products. With built-in SmartFlow™ technology, WhisperGreen Select™ is designed to perform as rated. When the fan senses static pressure, its speed is automatically increased to ensure optimal CFM output. This feature provides peace of mind, as the installer doesn't have to worry about compromising the fan's performance.

Complete Specifications on pages 28-29



The all-purpose, customizable IAQ solution for virtually any application

WhisperGreen Select™ is a ground-breaking IAQ solution that is revolutionizing the ventilation fan industry with a new set of features that enable customization and easier installation. To the builder and professional installer, Panasonic continues to be the innovation leader with high performance ventilation solutions that are built to last. WhisperGreen Select's unique design and superior energy efficiency are achieved through engineering expertise, provided by a company that sets the standard for quality and value.

WHISPERGREEN SELECT™ IS AS EASY AS 1-2-3!

Step 1: Select a Base Fan Model

Select a base model to start building the perfect IAQ solution that satisfies your ventilation design requirements.

Fan	
FV-05-11VKS1:	30-110 CFM integrated multi-speed
FV-05-11VK1:	50-80-110 CFM single speed
FV-11-15VK1:	110-130-150 CFM single speed
Fan/Light	
FV-05-11VKSL1:	30-110 CFM integrated multi-speed + LED Light
FV-05-11VKL1:	50-80-110 CFM single speed + LED Light
FV-11-15VKL1:	110-130-150 CFM single speed + LED Light

Pick-A-Flow™ Speed Technology

Built-in Pick-A-Flow™ speed selector – one fan, you choose the CFM. This technology provides the unique ability to select your required airflow (50-80-110 and 110-130-150 CFM models) with the simple flip of a switch.

Step 2: Select Value Added Features*

WhisperGreen Select™ offers a unique set of Four* patented modules that allow you to further customize your fan:

Multi-Speed with Time Delay (FV-VS15VK1) – Allows you to select the proper CFM settings to satisfy ASHRAE 62.2 continuous ventilation requirements. The fan runs continuously at a pre-set lower level, then elevates to a maximum level of operation when the wall switch is turned on, or when the SmartAction® motion sensor or condensation sensor module is activated. A High/Low delay timer returns the fan to the pre-set CFM level after a period of time set by the user.

NiteGlow™ LED Night Light (FV-MLVK1) – A specialized photocell feature automatically turns on the 1-watt LED night-light when darkness is sensed in the room. The High/Low brightness switch enables you to fine tune the photo cell to work in conjunction with the darkness level of your bathroom.

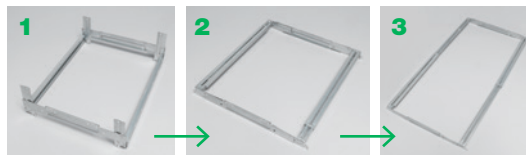
Condensation Sensor (FV-CSVK1) – Helps control bathroom condensation to prevent mold and mildew. Advanced sensor technology detects relative humidity and temperature to anticipate dew point, automatically turning the fan on to control humidity. Built-in Relative Humidity (RH) sensitivity adjustment enables fine tuning for moist conditions. When the condensation sensor is used in conjunction with multi-speed functionality, the fan will increase to high speed when the condensation sensor detects moisture in the room. This module also activates an automatic 20-minute delay off-timer for the fan.

SmartAction® Motion Sensor (FV-MSVK1) – Automatically activates when someone enters the room. Once the settings have been applied, the fan becomes truly automatic, making it ideal for people with disabilities and assisted living environments such as nursing homes and retirement communities. This module also activates an automatic 20-minute delay off-timer for the fan.

**Select up to 3 value added features.*

Step 3: Install Your Ideal Fan with the New Flex-Z Fast™ Installation System

Ingeniously designed installation bracket provides flexible, fast and easy installation for all your new construction or renovation projects.



- 1 Fold up articulating joints to easily position bracket in between the joist and/or through ceiling hole.
- 2 Fold articulating joints back down in preparation for installation.
- 3 Extend bracket to desired length.

Installed Performance and Quiet Operation at .25" w.g. Static Pressure:

ASHRAE, ENERGY STAR®, LEED for Homes, and HVI have set the industry standard for performance measurement at 0.25" w.g. The WhisperGreen Select™ fans not only provide powerful CFM output at 0.25" w.g., but our sones have also been certified at 0.25" w.g. so they are quiet under pressure and after installation.



ADJUSTABLE AIRFLOW FOR
MAXIMUM PERFORMANCE

WhisperSense™
VENTILATION FAN

WhisperSense-Lite™
VENTILATION FAN



FV-08VQC5



FV-08VQCL6



**ACTIVATED BY
MOTION AND HUMIDITY**



WhisperSense-Lite includes:
Two 13-Watt GU24 Spiral CFLs/2700 Kelvin/
84 CRI/910 Lumens each/ENERGY STAR®
qualified/10,000 hours rated average life/each
lamp equivalent to a 60-Watt incandescent
bulb/integral electronic ballast for flicker free
operation. Also includes a 4-Watt night-light.

FV-08VQC5 80 CFM 4" or 6" Duct
FV-11VQC5 110 CFM 4" or 6" Duct

FV-08VQCL6 80 CFM 4" or 6" Duct
FV-11VQCL6 110 CFM 4" or 6" Duct

■ **Dual motion and humidity sensors
with versatile functionality:**

Motion on / Motion off
Motion on / Humidity off
Humidity on / Humidity off

■ **Adjustable delay timer:**

from 30-seconds to 60-minutes

■ **Variable humidity controls:**

from 30 - 80% RH

■ **Built-in sensors, timers and controls**

- Detachable dual 4" or 6" diameter duct adaptor assembly
- Remarkable performance and quiet operation at .25 w.g.
- ENERGY STAR® qualified fan and light fixture
- Fully enclosed condenser motor for long life —rated for 30,000-hours continuous run
- Easy Installation (double hanger bar system)
- Rust-proof paint treatment on galvanized housing
- cUL listed for tub/shower enclosure when used with a GFCI branch circuit wire
- Built-in damper to prevent back-draft
- Fits in 2 x 8 construction
- Thermal fuse protection
- ASHRAE 62.2, LEED for Homes and ENERGY STAR® compliant
- 3-year warranty
- Optional radiation damper available for WhisperSense models (See page 27 for details)

Complete Specifications on pages 30-31

WhisperCeiling™
VENTILATION FAN

WhisperLite™
VENTILATION FAN



FV-08VQ5



FV-08VQL6



WhisperLite includes:
Two 13-Watt GU24 Spiral CFLs/2700 Kelvin/
84 CRI/910 Lumens each/ENERGY STAR®
qualified/10,000 hours rated average life/each
lamp equivalent to a 60-Watt incandescent
bulb/integral electronic ballast for flicker free
operation. Also includes a 4-Watt night-light.

FV-05VQ5	50 CFM	4" or 6" Duct
FV-08VQ5	80 CFM	4" or 6" Duct
FV-11VQ5	110 CFM	4" or 6" Duct
FV-15VQ5	150 CFM	6" Duct
FV-20VQ3	190 CFM	6" Duct
FV-30VQ3	290 CFM	6" Duct
FV-40VQ4	390 CFM	6" Duct

FV-08VQL6	80 CFM	4" or 6" Duct
FV-11VQL6	110 CFM	4" or 6" Duct
FV-15VQL6	150 CFM	6" Duct

- **Detachable dual 4" or 6" diameter duct adaptor assembly on 50-110 CFM models**
- Remarkable performance and quiet operation at .25" w.g.
- ENERGY STAR® qualified fan and light fixture
- Contemporary flush-mount grille for WhisperLite models
- Fully enclosed condenser motor for long life —rated for 30,000-hours continuous run
- Easy installation (double hanger bar system)
- Rustproof paint treatment on galvanized housing
- Built-in damper to prevent back-draft

- Fits 2 x 8 construction
- cUL listed for tub/shower enclosure when used with a GFCI branch circuit wire
- Thermal fuse protection
- ASHRAE 62.2, LEED for Homes and ENERGY STAR® compliant
- 3-year warranty
- Optional designer grille and radiation damper available for select WhisperCeiling models (See pages 26-27 for details)

Complete Specifications on pages 30-31

WhisperFit® E2

VENTILATION FAN



FV08-11VFM5



4" to 3"
Adaptor
included



WhisperFit® E2 Lite

VENTILATION FAN



FV08-11VFL5



WhisperFit®E2-Lite includes:

Two 13-Watt GU24 Spiral CFLs/2700 Kelvin/ 84 CRI/910 Lumens each/ENERGY STAR® qualified/10,000 hours rated average life/each lamp equivalent to a 60-Watt incandescent bulb/integral electronic ballast for flicker free operation. Also includes a 4-Watt night-light.

FV-08-11VFM5	80 or 110 CFM	4" or 3" Duct
FV-08-11VF5	80 or 110 CFM	4" or 3" Duct

FV-08-11VFL5	80 or 110 CFM	4" or 3" Duct
---------------------	---------------	---------------

- Perfect solution for any remodeler looking to quickly and easily replace an existing fan from below the ceiling.
- Use the Pick-A-Flow™ speed selector (80 or 110) to customize the air flow and meet the customer's ventilation needs.
- 4" Duct with 3" Duct adaptor included
- Lighted model features a flush mount grille with (2) 13 Watt self-ballasted GU24 base CFL lamps
- Detachable installation adaptor provides even greater flexibility when wiring and attaching the duct.
- Model FV08-11VFM5 features a built-in motion sensor that activates the fan whenever someone enters the room.

- Low profile design.
- Installation is made simple with the Flex-Z-Fast™
- Installation bracket with articulating joints for EZ positioning through a ceiling cavity.
- Remarkable performance and quiet operation at 0.25" w.g.
- ENERGY STAR® qualified fan and light fixture
- Fits in 2 x 6 and 2 x 8 construction
- Fully enclosed condenser motor for long life —rated for 30,000-hours continuous run
- Rust-proof paint on galvanized housing
- Built-in damper to prevent back-draft

Complete Specifications on pages 32-33

WhisperValue®
VENTILATION FAN

WhisperValue-Lite™
VENTILATION FAN



FV-08VS3



FV-08VSL3



WhisperValue® Lite includes:
Two 13-Watt GU24 Spiral CFLs/2700 Kelvin/
84 CRI/910 Lumens each/ENERGY STAR®
qualified/10,000 hours rated average life/each
lamp equivalent to a 60-Watt incandescent
bulb/integral electronic ballast for flicker free
operation. Also includes a 4-Watt night-light.

FV-05VS3	50 CFM	4" Oval Duct
FV-08VS3	80 CFM	4" Oval Duct
FV-10VS3	100 CFM	4" Oval Duct

FV-08VSL3	80 CFM	4" Oval Duct
FV-10VSL3	100 CFM	4" Oval Duct

- Super low profile housing design
- 3-3/8" housing depth – lowest profile fan
- Remarkable performance and quiet operation at .25" w.g.
- Fits in 2 x 4, 2 x 6, and 2 x 8 construction
- ENERGY STAR® qualified fan and light fixture
- cUL listed for wall and ceiling installations (WhisperValue only)
- Fully enclosed condenser motor for long life —rated for 30,000-hours continuous run
- Thermal fuse protection
- Easy installation (double hanger bar system)

- ASHRAE 62.2, LEED for Homes and ENERGY STAR® compliant
- Built-in damper to prevent back-draft
- cUL listed for tub/shower enclosure when used with a GFCI branch circuit wire
- 3-year warranty
- Optional radiation damper available for select WhisperValue models (See page 27 for details)

Complete Specifications on page 32-33

WhisperComfort™
VENTILATION FAN

FV-04VE1



A revolutionary way to provide balanced ventilation to your home.

- Ideal for today's air tight homes
- Affordable and easy to install
- Low-rate continuous run helps to ensure chemicals, indoor pollutants and stale air are vented out and replaced with fresh air
- Uses two 4" ducts
 - One exhausts stale air
 - Other supplies fresh air from outside
- Indoor and outdoor air passes through the patented capillary core which is designed to transfer heat and moisture
- Process tempers incoming air while transferring moisture
- Two filters clean exhaust and incoming air prior to passing through the ERV core
 - Extends the life of the core

Maintains indoor air quality while providing a constant flow of fresh air.

- Balances air pressure inside the home
- Can be installed in the ceiling, saving space and providing easy access for maintenance
- Can be used for spot or whole home ventilation
- Contemporary low profile grille design
- Incorporates built-in frost prevention technology to avoid core freeze-up
 - Temperature sensor controlled; mechanical damper on the supply air opens and closes based on timed cycles
- Fully enclosed motor for long life
- 3-Year warranty

Complete Specifications on page 32

WhisperWarm™
VENTILATION FAN



FV-11VH2



WhisperWarm includes:
Two 13-Watt GU24 Spiral CFLs/2700 Kelvin/
84 CRI/910 Lumens each/ENERGY STAR®
qualified/10,000 hours rated average life/each
lamp equivalent to a 60-Watt incandescent
bulb/integral electronic ballast for flicker free
operation. Also includes a 4-Watt night-light.

FV-11VH2 110 CFM 4" Duct

FV-11VHL2 110 CFM 4" Duct

- Remarkable performance and quiet operation at .25" w.g.
- Fully enclosed condenser motor for long life —rated for 30,000-hours continuous run
- Easy installation (double hanger bar system)
- Rustproof paint treatment on galvanized housing
- Built-in damper to prevent back-draft
- Fits in 2 x 8 construction
- Thermal fuse protection on motor and 3-level safety device for heater
- 1400-Watt steel sheathed heater element
- ASHRAE 62.2 and LEED for Homes compliant
- 3-year warranty

Complete Specifications on page 33

WhisperWall™
VENTILATION FAN



FV-08WQ1



Exterior Hood included

FV-08WQ1 70 CFM

- Remarkable performance and quiet operation at .25" w.g.
- ENERGY STAR® qualified
- Fully enclosed condenser motor for long life —rated for 30,000-hours continuous run
- Easy installation
- Rustproof paint treatment on galvanized housing
- Built-in damper to prevent back-draft
- Contemporary grille design
- cUL listed for tub/shower enclosure when used with a GFCI branch circuit wire
- Thermal fuse protection
- ASHRAE 62.2, LEED for Homes and ENERGY STAR® compliant
- 10" galvanized sleeve and steel exterior hood included
- Painted white
- Spring damper
- Foam seal to reduce back-draft
- 3-year warranty

Complete Specifications on page 34

WhisperRecessed™
VENTILATION FAN



FV-08VRL1 80 CFM 4" or 6" Duct

- Detachable dual 4" or 6" diameter duct adaptor assembly
- Powerful performance and super quiet operation
- Features a powerful 80 CFM fan hidden behind an elegant recessed light
- ENERGY STAR® qualified fan and light fixture
- Fully enclosed motor for long life – rated for 30,000-hours continuous run
- Easy installation (double hanger bar system)
- Rustproof paint treatment on galvanized housing
- Built-in damper to prevent back-draft
- Beautiful lighting with 6-1/2" aperture and advanced luminaire design

WhisperRecessed LED™
VENTILATION FAN



NEW LIGHTED MODEL!

INCLUDED: One 14-Watt GU24 base LED lamp/ 3000 Kelvin/>80 CRI/ 575 Lumens/50 LPW/ ENERGY STAR® qualified/ 25,000 hours rated average life.

FV-08VRE1 80 CFM 4" or 6" Duct

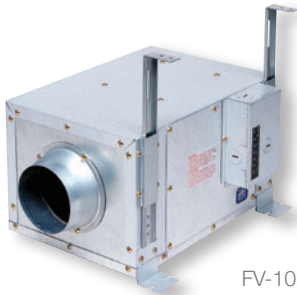
- Adjustable lamp position and deeper lamp regression for reduced glare
- cUL listed for tub/shower enclosure when used with a GFCI branch circuit wire
- Thermal fuse protection
- ASHRAE 62.2, LEED for Homes and ENERGY STAR® compliant
- WhisperRecessed is the industry's only ENERGY STAR® qualified recessed fan/light.*

*As of October 16, 2012 Energy Star listing.

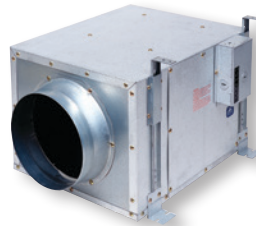
- 3-year warranty

Complete Specifications on pages 34-35

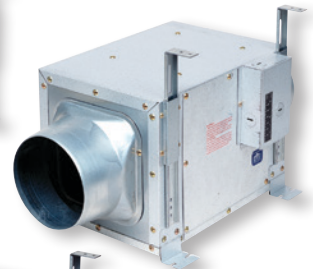
WhisperLine™
VENTILATION FAN



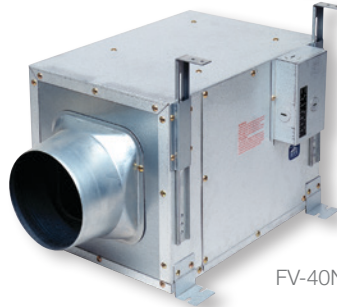
FV-10NLF1



FV-20NLF1



FV-30NLF1



FV-40NLF1



FV-10NLF1 120 CFM 4" Duct

FV-20NLF1 240 CFM 6" Duct

FV-30NLF1 340 CFM 6" Duct

FV-40NLF1 440 CFM 8" Duct

HOUSING:

- Galvanized steel for long life
- Insulated housing to prevent condensation and noise
- Tapered duct adaptor for easy connection

MOTOR:

- Super quiet/energy efficient
- Fully enclosed condenser motor for long life — rated for continuous run

SAFETY:

- Motor equipped with thermal cut-off fuse

EASY INSTALLATION:

- 5 positions for installation
- Joist or truss attachment brackets included
- Suspension brackets included

GRILLE:

- Low profile design

- Adjustable airflow for multi-inlet balance

- 3-year warranty

- ASHRAE 62.2, LEED for Homes and ENERGY STAR® compliant



Single Inlet Kit



Double Inlet Kit

Complete Specifications on pages 36-37



FV-GL3TDA

FV-GL3TDB



PC-RD05C4

Warnock-Hersey certified for use in non-combustible floor/ceiling and roof/ceiling assemblies. Please contact your dealer for a complete list of applicable ventilation fans approved for use with this product.

Designer Grille Features:

- Easy and affordable to change
- Change your grille to fit your room decor without compromising the performance and quality of the unit
- **Applicable Models**

WhisperCeiling: FV-05VQ5, FV-08VQ5, FV-11VQ5, FV-15VQ5

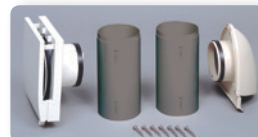
WhisperGreen Select Fan only models: FV-05-11VK1, FV-11-15VK1, FV05-11VKS1

Characteristics		
	FV-GL3TDA	FV-GL3TDB
Grille Size Square (inches/mm)	13/330	14-1/5 /361
Shipping Gross Weight (lbs/kg)	1.1/0.5	1.3/0.6
Trend Style Category	Traditional	Traditional
Material	ABS	ABS
cUL Approved ¹	Yes	Yes
HVI Certified ¹	Yes	Yes
Mfg. in ISO 9001 Certified Facility	Yes	Yes
RoHs Compliant	Yes	Yes

¹ Approved with Applicable Models

PASSIVE INLET VENT

Panasonic passive inlet provides make-up air to help balance indoor vs. outdoor air pressure.



FV-GKF32S1

Passive Inlet Vent Features:

- Sturdy open/close lever
- 2 position air delivery
- Foam pad reduces outdoor noise and condensation
- Insulation lining to prevent condensation

	Passive Inlet	FV-GKF32S1
Specifications	Air Volume Positions	2
	CFM Settings	12 & 18
Features	Open/Close Louver Setting	Yes
	Washable Air Filter	Yes
	Bug Screen	Yes
	3" x 12" (76 x 305 mm) Sleeve Included	Yes
	Body	ABS & PP
Installation	Wall Opening (diameter)	3"/76mm
	Installation Screw Included	Yes

SPECIFICATIONS



	WhisperGreen Select (Fan Only Models)											
	Base Fan											
	FV-05-11VK1						FV-11-15VK1					
Static Pressure in inches w.g.	0.1	0.25	0.1	0.25	0.1	0.25	0.1	0.25	0.1	0.25	0.1	0.25
Air Volume (CFM)	110	113	80	82	50	53	150	151	130	130	110	110
Noise (sones)	<0.3	0.8	<0.3	0.4	<0.3	0.3	<0.3	0.7	<0.3	0.5	<0.3	<0.3
Power Consumption (watts)	9.8	16.1	5.5	10.2	3.5	7.0	13.0	22.0	10.0	17.0	7.0	13.5
Energy Efficiency (CFM/Watt)	11.5	7.2	15.3	8.4	15.1	8.1	11.5	6.8	13.1	7.8	15.7	8.2
ENERGY STAR Qualified	Yes						Yes					
Duct Diameter - inches (mm)	4 (102) & 6 (152)						6 (152)					
Housing Dimensions (LxWxH) - inches (mm)	10-1/4 x 10-1/4 x 7-3/8 (260 x 260 x 187)						10-1/4 x 10-1/4 x 7-3/8 (260 x 260 x 187)					
Grille Size - in ² (mm ²)	13 (330)						13 (330)					

	WhisperGreen Select (Fan Only Models)																					
	Base Fan with Multi-Speed Plug'N Play Module																					
	FV-11-15VK1 + FV-VS15VK1																					
Static Pressure in inches w.g.	0.1	0.25	0.1	0.25	0.1	0.25	0.1	0.25	0.1	0.25	0.1	0.25	0.1	0.25	0.1	0.25	0.1	0.25	0.1	0.25	0.1	0.25
Air Volume (CFM)	150	151	130	130	120	121	110	110	100	102	90	96	80	84	70	72	60	62	50	51		
Noise (sones)	<0.3	0.7	<0.3	0.5	<0.3	0.4	<0.3	<0.3	<0.3	<0.3	<0.3	<0.3	0.4	<0.3	0.4	<0.3	0.4	<0.3	0.4	<0.3	0.4	
Power Consumption (watts)	13.0	22.0	10.0	17.0	7.4	14.1	7.0	13.5	5.6	11.3	4.9	10.7	4.4	9.6	3.8	8.6	3.6	7.7	3.1	6.8		
Energy Efficiency (CFM/Watt)	11.5	6.8	13.1	7.8	16.2	8.6	15.7	8.2	17.9	9.0	18.6	9.0	18.2	8.8	18.4	8.4	16.7	8.1	16.1	7.5		
ENERGY STAR Qualified	Yes																					
Duct Diameter - inches (mm)	6 (152)																					
Housing Dimensions (LxWxH) - inches (mm)	10-1/4 x 10-1/4 x 7-3/8 (260 x 260 x 187)																					
Grille Size - in ² (mm ²)	13 (330)																					
Lamp Watts	NA																					
Lumens (lm)																						
Lumens per Watt (LPW)																						
Colour Rendering Index																						
Colour Temperature (Kelvin)																						
Rated Life (hours)																						
Lamp Model #																						
Type of Lamp Socket																						

	WhisperGreen Select (Fan/LED Light Models)											
	Base Fan with LED Light											
	FV-05-11VKL1						FV-11-15VKL1					
Static Pressure in inches w.g.	0.1	0.25	0.1	0.25	0.1	0.25	0.1	0.25	0.1	0.25	0.1	0.25
Air Volume (CFM)	110	114	80	86	50	53	150	143	130	131	110	111
Noise (sones)	0.4	0.9	<0.3	0.6	<0.3	<0.3	0.6	0.9	<0.3	0.8	<0.3	0.6
Power Consumption (watts)	11.1	18.0	6.0	11.1	4.0	7.0	16.5	24.0	12.0	21.0	8.5	16.0
Energy Efficiency (CFM/Watt)	9.9	6.3	13.3	7.7	12.8	7.7	9.2	6.0	10.9	6.3	13.1	7.1
ENERGY STAR Qualified	Yes						Yes					
Duct Diameter (Inches)	4 (102) & 6 (152)						6 (152)					
Housing Dimensions (LxWxH) - inches (mm)	10-1/4 x 10-1/4 x 7-3/8 (260 x 260 x 187)											
Grille Size - in² (mm²)	13 (330)											
Lamp Watts	2 x 7W											
Lumens (lm)	550 lm per lamp*											
Lumens per Watt (LPW)	80 LPW*											
Colour Rendering Index	>80											
Colour Temperature (Kelvin)	3000K											
Rated Life (hours)	40,000											
Lamp Model #	LPH17											
Type of Lamp Socket	GU24											

SPECIFICATIONS

	WhisperGreen Select (Fan Only Models)																	
	Base Fan with Multi-Speed Multi-Speed																	
	FV-05-11VKS1																	
Static Pressure in inches w.g.	0.1	0.25	0.1	0.25	0.1	0.25	0.1	0.25	0.1	0.25	0.1	0.25	0.1	0.25	0.1	0.25	0.1	0.25
Air Volume (CFM)	110	113	100	106	90	95	80	82	70	71	60	66	50	53	40	43	30	33
Noise (sones)	<0.3	0.8	<0.3	0.7	<0.3	0.6	<0.3	0.4	<0.3	0.4	<0.3	0.3	<0.3	0.3	<0.3	<0.3	<0.3	<0.3
Power Consumption (watts)	9.8	16.1	8.0	14.0	6.5	11.7	5.5	10.2	4.3	8.6	3.6	7.8	3.5	7.0	2.7	5.7	2.4	5.0
Energy Efficiency (CFM/Watt)	11.5	7.2	13.0	7.9	14.5	8.5	15.3	8.4	17.2	8.7	17.5	8.8	15.1	8.1	16.3	8.2	14.2	7.6
ENERGY STAR Qualified	Yes																	
Duct Diameter - inches (mm)	4 (102) & 6 (152)																	
Housing Dimensions (LxWxH) - inches (mm)	10-1/4 x 10-1/4 x 7-3/8 (260 x 260 x 187)																	
Grille Size - in ² (mm ²)	13 (330)																	

WhisperGreen Select (Fan/LED Light Models)																		
Base Fan with LED Light and Integrated Multi-Speed																		
FV-05-11VKS1																		
0.1	0.25	0.1	0.25	0.1	0.25	0.1	0.25	0.1	0.25	0.1	0.25	0.1	0.25	0.1	0.25	0.1	0.25	0.1
110	114	100	105	90	94	80	86	70	71	60	62	50	53	40	43	30	35	
0.4	0.9	<0.3	0.8	<0.3	0.6	<0.3	0.6	<0.3	0.4	<0.3	0.3	<0.3	<0.3	<0.3	<0.3	<0.3	<0.3	
11.1	18.0	8.7	15.0	7.0	12.8	6.0	11.1	4.7	8.9	3.9	7.6	4.0	7.0	2.8	5.7	2.5	5.0	
9.9	6.3	11.6	7.1	13.1	7.5	13.3	7.7	15.3	8.2	15.9	8.4	12.8	7.7	14.6	7.7	12.8	7.4	
Yes																		
4 (102) & 6 (152)																		
10-1/4 x 10-1/4 x 7-3/8 (260 x 260 x 187)																		
13 (330)																		
2 x 7W																		
550 lm per lamp*																		
80 LPW*																		
>80																		
3000K																		
40,000																		
LPH17																		
GU24																		



WhisperSense	FV-08VQC5		FV-11VQC5	
Static Pressure in inches w.g.	0.1	0.25	0.1	0.25
Air Volume (CFM)	80	59	110	91
Noise (sones)	<0.3	<0.3	0.3	0.5
Power Consumption (Watts)	15.8	15.6	24.3	24.2
Energy Efficiency (CFM/Watt)	5.1	3.9	4.6	3.9
ENERGY STAR® Qualified	Yes			
Duct Diameter-inches (mm)	4 or 6 (102 or 152)			
Housing Dimensions (LxWxH)-inches (mm)	10-1/4 x 10-1/4 x 7-3/8 (260 x 260 x 187)			
Grille Size-Square inches (mm)	13 (330)			



WhisperSense-Lite	FV-08VQL6		FV-11VQL6	
Static Pressure in inches w.g.	0.1	0.25	0.1	0.25
Air Volume (CFM)	80	62	110	89
Noise (sones)	<0.3	0.4	0.7	0.7
Power Consumption (Watts)	17.5	17.6	26.0	25.7
Energy Efficiency (CFM/Watt)	4.7	3.6	4.3	3.5
ENERGY STAR® Qualified	Yes			
Duct Diameter-inches (mm)	4 or 6 (102 or 152)			
Housing Dimensions (LxWxH)-inches (mm)	10-1/4 x 10-1/4 x 7-3/8 (260 x 260 x 187)			
Grille Size-Square inches (mm)	13 (330)			



WhisperCeiling	FV-05VQ5		FV-08VQ5		FV-11VQ5		FV-15VQ5		FV-20VQ3		FV-30VQ3		FV-40VQ4	
Static pressure in inches w. g.	0.1	0.25	0.1	0.25	0.1	0.25	0.1	0.25	0.1	0.25	0.1	0.25	0.1	0.25
Air Volume (CFM)	50	36	80	62	110	91	150	127	190	144	290	257	390	356
Noise (sones)	<0.3	0.5	<0.3	0.4	<0.3	0.5	<0.3	0.5	0.8	1.4	2.0	N/A	3.0	3.0
Power Consumption (Watts)	11.0	11.5	14.7	14.5	21.1	20.7	28.4	27.3	42.0	42.0	64	62	111.4	109.6
Energy Efficiency (CFMs/Watt)	4.7	3.2	5.8	4.5	5.3	4.5	5.3	4.7	4.5	3.4	4.6	4.1	3.5	3.3
ENERGY STAR® Qualified	Yes													
Duct Diameter-inches (mm)	4 or 6 (102 or 152)		4 or 6 (102 or 152)		4 or 6 (102 or 152)		6 (152)		6 (152)		6 (152)		6 (152)	
Housing Dimensions (LxWxH) -inches (mm)	10-1/4 x 10-1/4 x 7-3/8 (260 x 260 x 187)								12-9/32 x 12-3/16 x 9-9/32 (312 x 310 x 236)				14-25/32 x 14-23/32 x 9-9/32 (375 x 374 x 236)	
Grille Size-Square inches (mm)	13 (330)		13 (330)		13 (330)		13 (330)		15 (381)		15 (381)		17-11/16 (449)	



WhisperLite	FV-08VQL6		FV-11VQL6		FV-15VQL6	
Static pressure in inches w. g.	0.1	0.25	0.1	0.25	0.1	0.25
Air Volume (CFM)	80	62	110	90	150	128
Noise (sones)	<0.3	0.4	0.5	0.6	0.9	1.0
Power Consumption (Watts)	14.9	14.7	23.4	23.0	31.8	30.9
Energy Efficiency (CFMs/Watt)	5.5	4.3	4.7	3.9	4.8	4.2
ENERGY STAR® Qualified	Yes					
Duct Diameter-inches (mm)	4 or 6 (102 or 152)		4 or 6 (102 or 152)		6 (152)	
Housing Dimensions (LxWxH)-inches (mm)	10-1/4 x 10-1/4 x 7-3/8 (260 x 260 x 187)					
Grille Size-Square inches (mm)	13 (330)		13 (330)		13 (330)	



	FV-08-11VF5 (FAN)								FV-08-11VFM5 (FAN WITH MOTION SENSOR)								FV-08-11VFL5 (FAN/LIGHT)							
	4" Duct		3" Duct		4" Duct		3" Duct		4" Duct		3" Duct		4" Duct		3" Duct		4" Duct		3" Duct		4" Duct		3" Duct	
Static pressure in inches w. g.	0.1	0.25	0.1	0.25	0.1	0.25	0.1	0.25	0.1	0.25	0.1	0.25	0.1	0.25	0.1	0.25	0.1	0.25	0.1	0.25	0.1	0.25	0.1	0.25
Air Volume (CFM)	110	104	100	88	80	73	70	61	110	102	100	88	80	71	70	59	110	102	100	86	80	72	70	60
Noise (sones)	0.8	1.2	1.3	1.5	0.3	0.6	0.5	1.1	0.8	1.2	1.3	1.5	0.3	0.8	0.5	1.1	1.0	1.3	1.3	1.5	0.4	0.7	0.6	1.0
Power Consumption (Watts)	26.5	26.4	26.4	25.9	21.1	20.7	20.9	20.3	27.0	26.8	26.8	26.3	21.6	21.1	21.4	20.8	26.6	26.5	26.4	25.8	20.9	20.5	20.8	20.2
Energy Efficiency (CFMs/Watt)	4.2	4.0	3.9	3.5	3.8	3.5	3.5	3.2	4.1	3.8	3.8	3.3	3.7	3.3	3.5	3.0	4.2	3.9	3.9	3.4	3.8	3.5	3.7	3.2
ENERGY STAR® Qualified	Yes				Yes				Yes				Yes				Yes				Yes			
Duct Diameter -inches (mm)	4 / 3 (102 / 76)								4 / 3 (102 / 76)								4 / 3 (102 / 76)							
Housing Dimensions (LxWxH)-inches (mm)	10-1/4 x 10-1/4 x 5-5/8 (260 x 260 x 143)								10-1/4 x 10-1/4 x 5-5/8 (260 x 260 x 143)								10-1/4 x 10-1/4 x 5-5/8 (260 x 260 x 143)							
Grille Size -Square inches (mm)	13 (330)								13 (330)								13 (330)							



	FV-05VS3		FV-08VS3		FV-10VS3	
Static pressure in inches w. g.	0.1	0.25	0.1	0.25	0.1	0.25
Air Volume (CFM)	60	53	80	72	100	92
Noise (sones)	0.4	1.0	1.0	1.2	1.4	1.5
Power Consumption (Watts)	15.9	16.3	21.2	21.5	29.6	29.9
Energy Efficiency (CFMs/Watt)	3.8	3.3	3.8	3.3	3.4	3.1
ENERGY STAR® Qualified	Yes					
Duct Diameter-inches (mm)	4 (102) Oval					
Housing Dimensions (LxWxH)-inches (mm)	10-1/4 x 10-1/4 x 3-3/8 (260 x 260 x 86)					
Grille Size -Square inches (mm)	13 (330)					



	FV-08VSL3		FV-10VSL3	
Static pressure in inches w. g.	0.1	0.25	0.1	0.25
Air Volume (CFM)	80	72	100	91
Noise (sones)	1.0	1.2	1.4	1.5
Power Consumption (Watts)	22.5	22.9	30.2	30.3
Energy Efficiency (CFMs/Watt)	3.6	3.1	3.3	3.0
ENERGY STAR® Qualified	Yes			
Duct Diameter-inches (mm)	4 (102) Oval			
Housing Dimensions (LxWxH)-inches (mm)	10-1/4 x 10-1/4 x 3-3/8 (260 x 260 x 86)			
Grille Size-Square inches (mm)	13 (330)			



	FV-04VE1		
	40 CFM	20 CFM	10 CFM
Static pressure in inches w. g.	0.1	0.1	0.1
Air Volume Exhaust (CFM)	40	20	10
Air Volume Supply (CFM)	30	20	10
Noise (sones)	0.8	<0.3	NA
Power Consumption (Watts)	23	21	17
Energy Efficiency (CFMs/Watt)	0.15	0.10	0.09
Duct Diameter -inches (mm)	2 x 4 (102)		
Housing Dimensions (LxWxH)-inches (mm)	18-1/2 x 13-1/2 x 7-7/8 (470 x 343 x 200)		
Grille Size (LxW)-inches (mm)	20-3/4 x 16-3/4 (527 x 425)		



	FV-11VH2		FV-11VHL2	
Static pressure in inches w. g.	0.1	0.25	0.1	0.25
Air Volume (CFM)	110	89	110	89
Noise (sones)	0.6	1.0	0.7	1.0
Power Consumption (Watts)	30.7	30.5	30.6	30.5
Energy Efficiency (CFMs/Watt)	3.6	2.9	3.6	2.9
Duct Diameter-inches (mm)	4 (102)	4 (102)	4 (102)	4 (102)
Housing Dimensions (LxWxH)-inches (mm)	16 x 11-1/2 x 7-3/4 (406 x 292 x 197)		16 x 11-1/2 x 7-3/4 (406 x 292 x 197)	
Grille Size (LxW)-inches (mm)	18-1/8 x 13-5/16 (460 x 338)		18-1/8 x 14-1/8 (460 x 359)	



WhisperWall™

VENTILATION FAN

	FV-08WQ1
Static pressure in inches w. g.	0.03
Air Volume (CFM)	70
Noise (sones)	1.1
Power Consumption (Watts)	18
Energy Efficiency (CFMs/Watt)	3.9
ENERGY STAR® Qualified	Yes
Duct Diameter - inches (mm)	8 (203)
Opening Dimension - Square inches (mm)	8-1/2 (216)
Grille Size - Square inches (mm)	10-1/4 (260)

WhisperRecessed™

VENTILATION FAN

	FV-08VRL1	
Static pressure in inches w. g.	0.1	0.25
Air Volume (CFM)	80	66
Noise (sones)	0.8	0.7
Power Consumption (Watts)	20.5	19.5
Energy Efficiency (CFMs/Watt)	4.0	3.4
ENERGY STAR® Qualified	Yes	
Duct Diameter-inches (mm)	4 or 6 (102 or 152)	
Housing Dimension - (LxWxH) inches (mm)	12-3/4 x 8-1/4 x 7-1/2 (324 x 210 x 191)	
Grille Size - Square inches (mm)	7-1/4 (184)	

WhisperRecessed LED™

VENTILATION FAN

	FV-08VRE1	
Static pressure in inches w. g.	0.1	0.25
Air Volume (CFM)	80	66
Noise (sones)	0.8	0.7
Power Consumption (Watts)	20.5	19.5
Energy Efficiency (CFMs/Watt)	4.0	3.4
ENERGY STAR® Qualified	Yes	
Duct Diameter-inches (mm)	4 or 6 (102 or 152)	
Housing Dimension - (LxWxH) inches (mm)	12-3/4 x 8-1/4 x 7-1/2 (324 x 210 x 191)	
Grille Size - Square inches (mm)	7-1/4 (184)	



WhisperLine	FV-10NLF1			FV-20NLF1			FV-30NLF1			FV-40NLF1		
Static pressure in inches w. g.	0.2	0.3	0.4	0.2	0.3	0.4	0.2	0.3	0.4	0.2	0.3	0.4
Air Volume (CFM)	120	105	82	240	225	200	340	322	302	440	425	408
Power Consumption (Watts)	36.2	35	33.5	57	55	53.2	98.2	96.4	94.9	132	128	122
Energy Efficiency (CFMs/Watt)	3.3			4.2			3.5			3.3		
ENERGY STAR® Qualified	Yes						Yes					
Duct Diameter-inches (mm)	4 (102)			6 (152)			6 (152)			8 (203)		
Opening Dimension-inches (mm)	N/A						N/A					
Grille Size-Square inches (mm)	9-1/2 (241)						9-1/2 (241)					

WhisperLine Installation Kits						
Item	Model No.	Description	Inlet Grille	Back-draft Damper	Clamp	Y-Adaptor
Accessory Kit	FV-NLF04G	4" (102mm) Inlet Grille	1-4" (102mm)	-	-	-
	FV-NLF06G	6" (152mm) Inlet Grille	1-6" (152mm)	-	-	-
	PC-NLF04S	4" (102mm) Single Inlet Kit	1-4" (102mm)	1-4" (102mm)	6	-
	PC-NLF06S	6" (152mm) Single Inlet Kit	1-6" (152mm)	1-6" (152mm)	6	-
	PC-NLF04D	4" (102mm) Double Inlet Kit	2-4" (102mm)	2-4" (102mm)	12	1 (4"-4"x2) 1(102mm x 102mm x 2)
	PC-NLF06D	6" (152mm) Double Inlet Kit	2-6" (152mm)	2-6" (152mm)	12	1 (6"-6"x2) 1(152mm x 152mm x 2)
	PC-NLF64D	6" (152mm) - 4" (102mm) Double Inlet Kit	2-4" (102mm)	2-4" (102mm)	12	1 (6"-4"x2) 1(152mm x 102mm x 2)
Y-Adaptor	PC-NLF86Y	8" (203mm) - 6" (152mm) Y-Adaptor	-	-	-	1 (8"-6"x2) 1(203mm x 152mm x 2)

To ensure quiet operation of ENERGY STAR® qualified in-line and remote fans, each fan should be installed using sound attenuation techniques appropriate for the installation. For bathroom and general ventilation applications, at least 8 feet of insulated flexible duct must be installed between the exhaust or supply grille(s) and the fan.





Panasonic Ventilation Fan Benefits

Certified & Code Compliant

Panasonic ventilation fans are certified by the Home Ventilating Institute (HVI) and ENERGY STAR® qualified, where guidelines exist. All models also comply with ASHRAE 62.2, the ventilation standard required by LEED for Homes and other building programs.

Powerful & Quiet

Fully enclosed DC and AC condenser motors assure remarkable performance and quiet operation.

Long Life

Permanently lubricated motors are engineered for trouble-free, continuous operation for 60,000 hours on DC motors and 30,000 hours on AC motors, along with rust-proof paint and galvanized housing.

Easy Installation

Integrated duct adaptor assembly, adjustable mounting brackets (up to 24" o.c.), fan/motor units that easily detach from the housing and uncomplicated wiring all lend to user-friendly installation. Double-hanger bar systems allow for ideal positioning. While WhisperGreen Select features our ground-breaking Flex-Z-Fast™ installation bracket featuring articulating joints for flexible, fast and easy installation.

Energy Savings

For high energy efficiency, input wattage readings are among the lowest in the industry.

Safety

All models are equipped with thermal fuse protection. With the exception of the heater fans, all models are cUL listed for tub/shower enclosure when used with a GFCI branch circuit wire.

Design

Feature contemporary grille designs.

Airflow

A built-in damper in all ceiling-mounted models prevents back-draft.

Illumination

ENERGY STAR® rated compact fluorescent lamps with 10,000 hours of rated life and a 4-Watt night-light are available on select models.

LED Lighting

WhisperGreen Select™ fan/light models feature a contemporary flush mount grille that incorporates 2 replaceable, ENERGY STAR rated, 7W GU24 base LED lamps. Panasonic's advanced LED technology lasts 4 times longer than compact fluorescent lamps and does not contribute to mercury waste when disposed.

Green Manufacturing

All fan only models are RoHS Approved.

Warranty

6-year warranty on DC motor and 3-year warranty on all other models and parts. For CFL's: 6-year warranty on DC motor, 5-years on LEDs, 3-years on parts.

Always consult your local building codes for the ventilation requirements in your area.

Green Building is the practice of increasing energy efficiency while promoting economic health for people and the environment. Effective green building can reduce operating costs through less energy consumption; improve occupant health by enhancing indoor air quality and lessening the impact on the environment.

Panasonic

Panasonic Canada Inc.

5770 Ambler Drive,

Mississauga, ON L4W 2T3

Phone (800) 669-5165

Fax (905) 238-2414

Email: ventilationfans@ca.panasonic.com

www.panasonic.com

Dealer address:



Because its products are subject to continuous improvements, Panasonic reserves the right to modify product design and specifications without notice and without incurring any obligations.

VFSJ 2015-08