

NeZha3 Remote Control Board User Manual

Foreword

This manual provides instructions on the functions, operation methods, and daily maintenance methods of NeZha3 Remote Control Board.

Applicable products

This manual applies to the following products:

| Product name | Product model | Software version |
|-----------------------------|---------------|------------------|
| NeZha3 Remote Control Board | XSXY_RCB | R001 |

Audience

- Users of the Mobile Digital Medical X-ray Imaging System.
- UIH training and customer service engineers.
- UIH marketing personnel.
- Authorized distributors of UIH.

Contact information

In case of any problem, please contact UIH Service Center.

Shanghai United Imaging Healthcare Co., Ltd.

Telephone: 0086 400-686-6088

E-mail: services@united-imaging.com

Website: www.united-imaging.com

Address: 2258 Chengbei Rd., Jiading District, Shanghai, 201807

1 Laws and regulations

This medical equipment complies with relevant regulations regarding the marketing of medical equipment.

If there are regulations relevant to the use and operation of this equipment, operators are obliged to comply with such regulations.

This device complies with Part 15 of the FCC Rules. Operation is subject to the following two conditions:

- (1) This device may not cause harmful interference, and
- (2) This device must accept any interference received, including interference that may cause undesired operation.

Please take attention that changes or modification not expressly approved by the party responsible for compliance could void the user's authority to operate the equipment.

2 Safety Information

The Remote Control Board can participate in the machine exposure operation, be careful to avoid unnecessary radiation.

3 Remote Control Board

3.1 Introduction to the Remote Control Board

The Remote Control Board is used to receive the key signal of the remote controller and transmit the signal to the system. It is also responsible for transmitting the feedback signal of the system to the remote control unit.

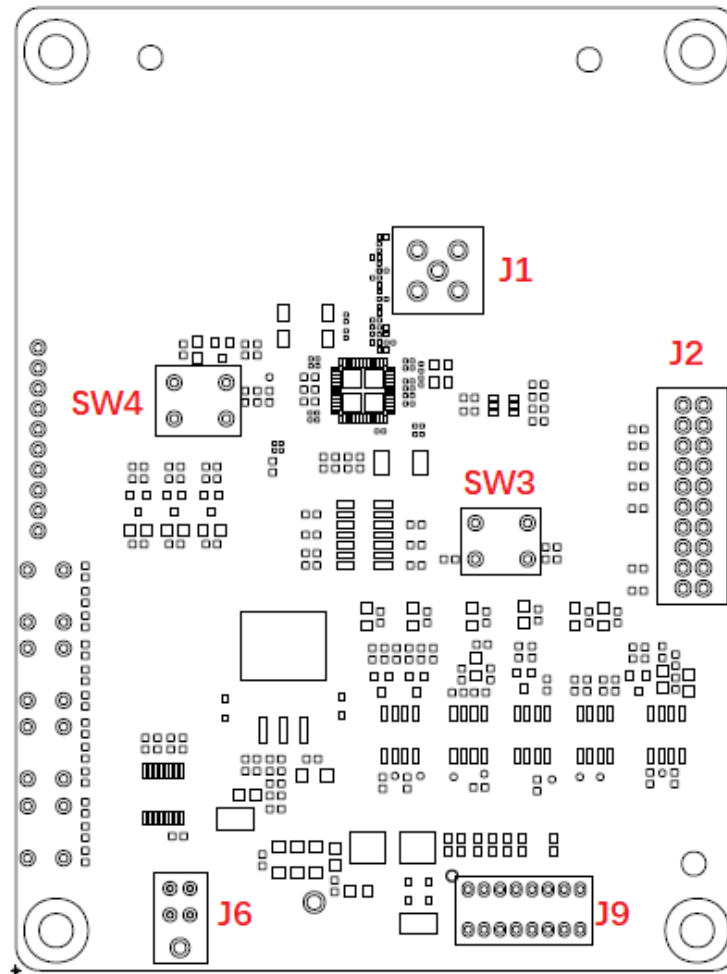


Figure3 - 1 Remote Control Board

| No. | Name | Description |
|-----|------|-------------------------------------------------------------------|
| 1 | J1 | External antenna signal interface for installing external antenna |
| 2 | J2 | Download interface for Downloading program software |
| 3 | J6 | Debugging interface for board debugging |
| 4 | J9 | Power supply and signal interface to the system |
| 5 | SW3 | Reset Key |
| 6 | SW4 | Paring Key |

3.2 Pairing the Remote Control Board

In factory, the Remote Control Board has been paired to the system in one-to-one manner. If the Remote Control Board is replaced, you need to pair the new Remote Control Board to the system.

1. Install the new Remote Control Board on the system.

2. Start up the system and log on to the system software.
 3. Click Remote Switch Pairing in GCS interface.
 4. Click Pairing in the pop-up window.
 5. Press the Collimator Lights button, exposure button, and safety operation switch on the Remote Control at the same time in 10 s for more than 3 s.
- Wait for the remote control to be paired. When the status indicator lights up (green) for about 1 s, pairing is complete.

The remote control ensures effective control within 10 meters from the system in the open and unobstructed space.

3.3 Operating the Remote Control Board

The Remote Control Board needs to be used with the remote control. Please refer to the operating instructions of the remote control.

3.4 Technical data

- Communication Distance: ≥ 10 meters
- Baud rate: 7.49969Kbps
- Receiving sensitivity: -80dbm
- Radio frequency: 433.17Mhz
- Frequency band: 200KHZ
- Modulation mode: GFSK
- Temperature: $0^{\circ} \sim 50^{\circ}$