

Job Name

Purchaser

Submitted to

Unit Designation

Location

Engineer

Reference

Approval

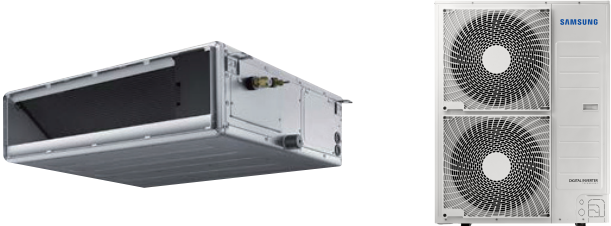
Construction

Schedule #

| Specifications | | | |
|--------------------------|---|---------------------------|---|
| Model | Indoor Unit Model Number (US Code) | | AC030BNHDCH/AA (CNH30HDB) |
| | Outdoor Unit Model Number (US Code) | | AC030BXSCCH/AA (CXH30SCB) |
| Performance ¹ | Nominal Capacity | Cooling / Heating (Btu/h) | 30,000 / 32,000 |
| | Capacity Range | Cooling (Btu/h) | 14,00 - 36,000 |
| | | Heating (Btu/h) | 10,500 - 40,000 |
| | SEER / EER | | 18.3 / 12.0 |
| | COP (nominal heating) | | 3.3 |
| | HSPF | | 11.1 |
| | AHRI Certification Number | | 207698070 |
| Power | Voltage | ø / V / Hz | 1 / 208-230 / 60 |
| | Working Voltage Range (VAC) | | 176 - 254 (max. 3% deviation from each) |
| | Operating Current (min. / std. / max.) | Cooling (A) | 4.5 / 11.4 / 14.5 |
| | | Heating (A) | 3.6 / 13.0 / 20.6 |
| | Max. Breaker | Amps | 40 |
| Dimensions | W X H X D (in.) | Indoor Unit | 47 1/4 X 9 13/16 X 27 9/16 |
| | | Outdoor Unit | 37 X 55 7/8 X 13 |
| | Duct Connections (W X H) | Supply (in.) | 45 5/16 X 8 11/16 |
| | | Return (ID, in.) | 45 5/16 X 8 11/16 |
| | Weight (lbs.) | Indoor Unit | 76.1 |
| Sound Pressure Level | Indoor Unit dB(A) | L / M / H | 33 / 37 / 41 |
| | Outdoor Unit dB(A) | Cooling / Heating (high) | 49 / 50 |
| Operating Temperatures | Outdoor | Cooling | 23 ~ 122°F (-5 ~ 50°C) |
| | | Heating | -4 ~ 122°F (-20 ~ 50°C) w/ baffle |
| | Indoor | Heating | -13 ~ 75°F (-25 ~ 24°C) |
| | | Cooling | 61 ~ 90°F (16 ~ 32°C) |
| | | Heating | T ≤ 80°F (27°C) |
| Pipe Connections | Indoor & Outdoor | High side (flare) | 3/8" |
| | | Low side (flare) | 5/8" |
| | Maximum (ft.) | | 246 |
| | Maximum Vertical Separation (ft.) | | 98.4 |
| | Condensate Connection (with included adapter) | | 1 1/16" ID for 3/4" PVC |
| Refrigerant | Type | | R410A |
| | Control Method | | Electronic Expansion Valve |
| | Factory Charge | lbs. | 8.82 |
| | Charged for | | 24.6 ft |
| | Additional Refrigerant | | 0.11 oz/ft over 24.6 ft |
| Compressor | Manufacturer | | Samsung |
| | Type | | Inverter Driven, Twin BLDC Rotary |
| | RLA | Amps | 21.0 |
| Evaporator Fan | Type | | BLDC (1) With Sirocco Fan (3) |
| | Air Volume | CFM (L/M/H) | 600 / 759 / 918 (at standard ESP) |
| | Output (W) / FLA (A) | | 153 W / 2.10 A |
| | Static Pressure | Standard ("WC) | 0.58 |
| | | Min. / Max. ("WC) | 0.1 - 0.79 |
| Condenser Fan | Motor | | BLDC With Axial Type Fan (2) |
| | FLA / Watts / CFM (max.) | | 1.25 A / 125 W / 4,414 CFM |
| Safety | Certifications | | ETL (UL 1995) |
| | Devices: PCB fuses, indoor unit terminal block thermal fuse, current transformer, over-voltage protection, crankcase heating, temperature limit protection logic, compressor overload sensing | | |

¹ Certified in accordance with the AHRI Unitary Small Air-Source Heat Pumps (USHP) Certification Program which is based on the latest edition of AHRI Standard 210/240.

Samsung HVAC maintains a policy of ongoing development, specifications are subject to change without notice. Refer to www.AHRIdirectory.org for current reference numbers.



- General Information
- The system shall provide 100% heating capacity at -4°F (-20°C) and high heating performance at -13°F (-25°C)
 - Base pan heater equipped as standard
 - The outdoor unit shall supply power to indoor unit via 14 AWG X 3 power wire
 - High-voltage terminal block temperature sensor to disable unit in the event of power connection overheating
 - Integral condensate pump with maximum 29" lift from bottom of the unit with check valve and float switch that disables indoor should condensate overflow be detected.
 - Auto-restart after power loss
 - Soft-start compressor minimizing current inrush
 - All heat exchangers shall be mechanically bonded aluminum fin to copper tube
 - The condensing unit heat exchanger salt spray test method: ISO-9227 - the heat exchanger showed no unusual rust or corrosion development to 3,000 hours.

- Option settings
- The outdoor unit shall have snow accumulation prevention option setting to prevent snow drifting against an idle outdoor unit.
 - Night-time Quiet Mode: reduction of operational sound during (*automatic or manual activation*).
 - Emergency Temperature Output (ETO) function: when indoor unit is in error status or when room temperature exceeds configurable temperature level, the system outputs a signal to an external source, e.g., backup system, building management system, alert device (ex: status light, warning lamp, buzzer).
 - System can be set up as heating/cooling, cooling only, or heating only via outdoor unit option setting.
 - Maximum Current Control configurable from 50% - 100% via outdoor unit, wired controller, or central controller

- Indoor Fan
- Indoor fan is sirocco type
 - Three fan speed settings and auto setting
 - Smart pressure control feature that adjusts fan speed based on ESP delivering consistent heating and cooling power
 - The indoor unit shall have a smart-tuning function that can provide optimized comfort by allowing the occupant to offset the fan CFM curve with a wired remote controller (MWR-WG00UN) to increase or decrease airflow.
 - The indoor unit shall have automatic air volume scanning for simple setup and optimized comfort settings for the occupant.

- Construction
- Outdoor unit shall be galvanized steel with a baked-on powder coated finish for durability
 - Indoor Unit: Insulated, galvanized steel.

- Controls
- Control wiring shall be 2 X 16 AWG
 - No additional interface modules/adapters are required when connecting to Samsung central control options.
 - The unit shall be operated via a wireless or wired remote control with DDC type signal
 - Dual set temperature support when connected to MWR-WG00UN Advanced Wired Controller or central control options.
 - Wired or wireless controllers must be purchased separately

- Refrigerant System
- The compressor shall be hermetically sealed, inverter-controlled BLDC rotary type.
 - Refrigerant flow shall be controlled by an electronic expansion valve at outdoor unit

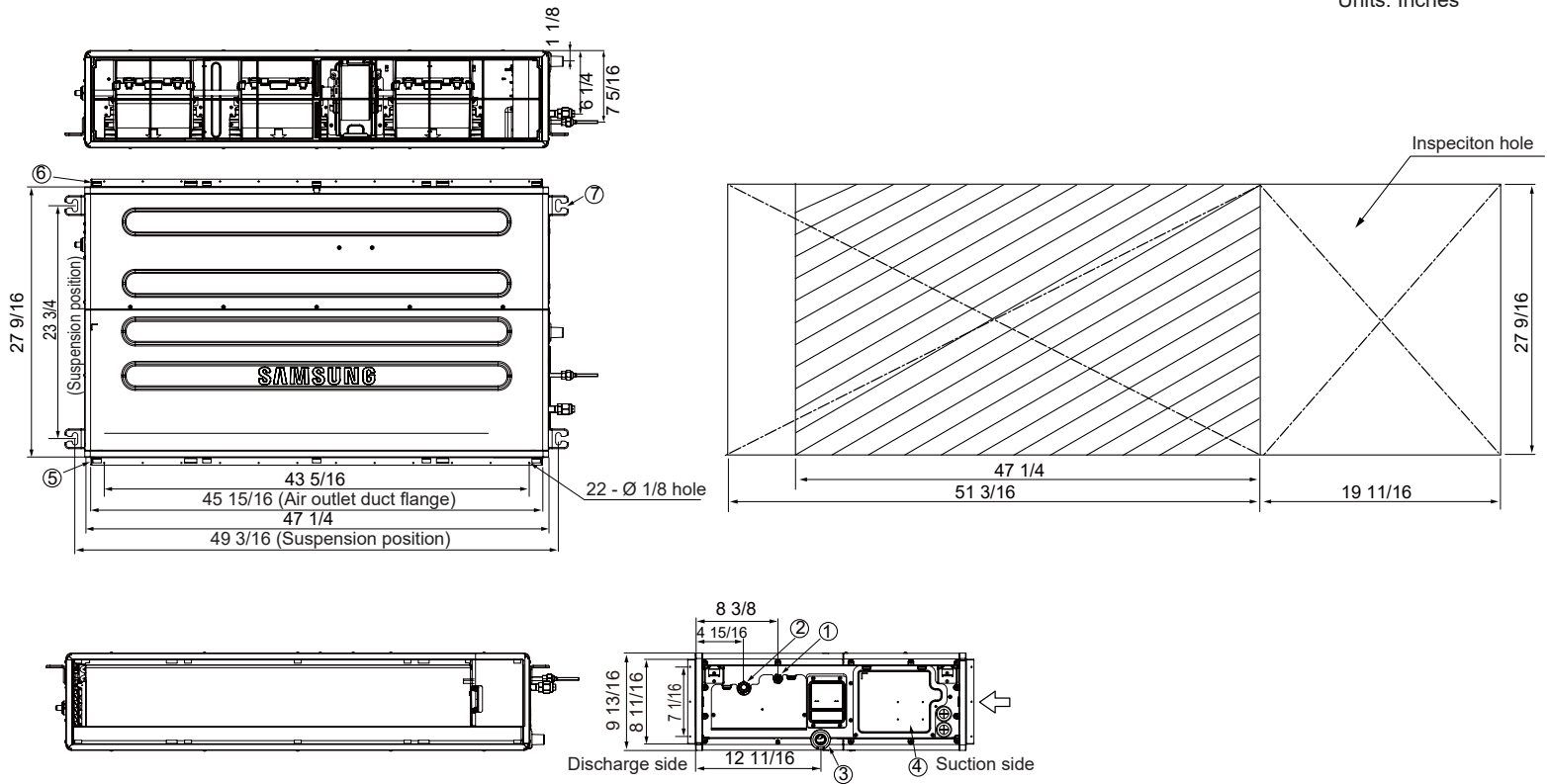
- Air Filtration
- Air filtration shall be field provided
 - Pressure drop across field-supplied filter must be factored into the total ESP.

Warranty
 10 Years compressor, 10 years parts, 1 year limited labor when registered

Optional Accessories

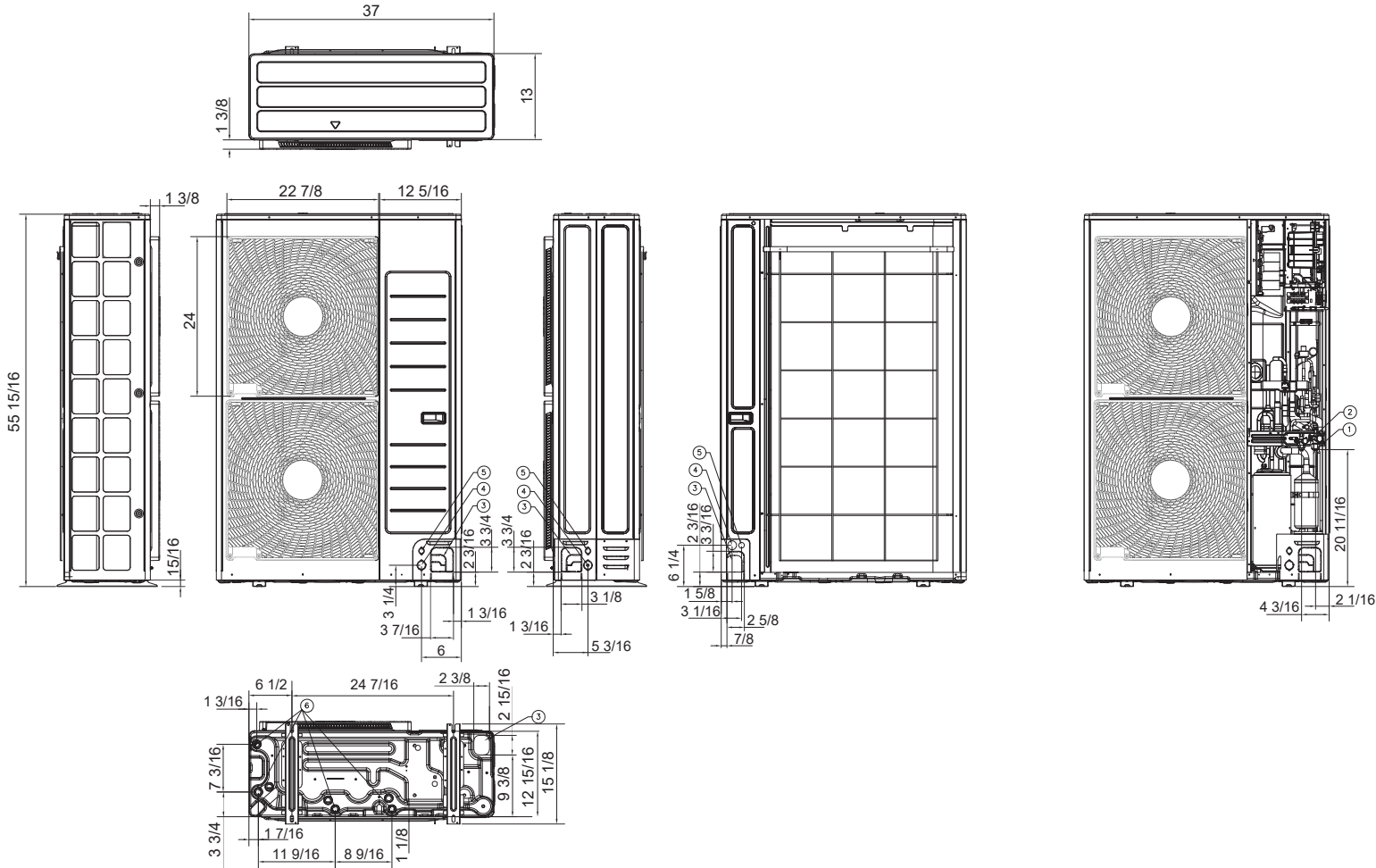
| | | |
|--|--------------------------|------------|
| Wired Controller | Advanced | MWR-WG00UN |
| | Touchscreen | MWR-SH11UN |
| Thermostat Adaptor (for connection to a standard 24VAC thermostat) | | MIM-A60UN |
| Wireless Signal Control | Wireless Signal Receiver | MRK-A10N |
| | Wireless Controller | AR-EH04U |
| Wi-Fi Adapter | | MIM-H05UN |
| External Temperature Sensor | | MRW-TA |
| Filter Box | | FB-DS2 |
| External Contact Control | | MIM-B14 |
| Wall Bracket (for outdoor unit) | | CKN-250 |
| Wind Baffles | Front | WBF-6M |
| | Back | WBB-4M |
| Hail Guard Kit (includes back and side guards) | | HGK-5 |
| Line Sets - insulated and flared, interconnect cables included | 25' - ILS-2510 | |
| | 50' - ILS-5010 | |

Units: Inches



| No. | Name | Description |
|-----|-------------------------------|-----------------|
| ① | Refrigerant Liquid Pipe | Ø 3/8" |
| ② | Refrigerant Gas Pipe | Ø 5/8" |
| ③ | Condensate Drain | 3/4" (OD 1.05") |
| ④ | Power & Comm. Wiring Conduits | - |
| ⑤ | Supply Air Flange | - |
| ⑥ | Return Air Flange | - |
| ⑦ | Hook | - |

Units: Inches



| No. | Name | Description |
|-----|-------------------------|-------------|
| ① | Refrigerant Liquid Pipe | Ø 3/8" |
| ② | Refrigerant Gas Pipe | Ø 5/8" |
| ③ | Pipe Knockout Hole | - |
| ④ | Power Wiring Conduits | - |
| ⑤ | Comm. Wiring Conduits | - |
| ⑥ | Drain Hole | - |