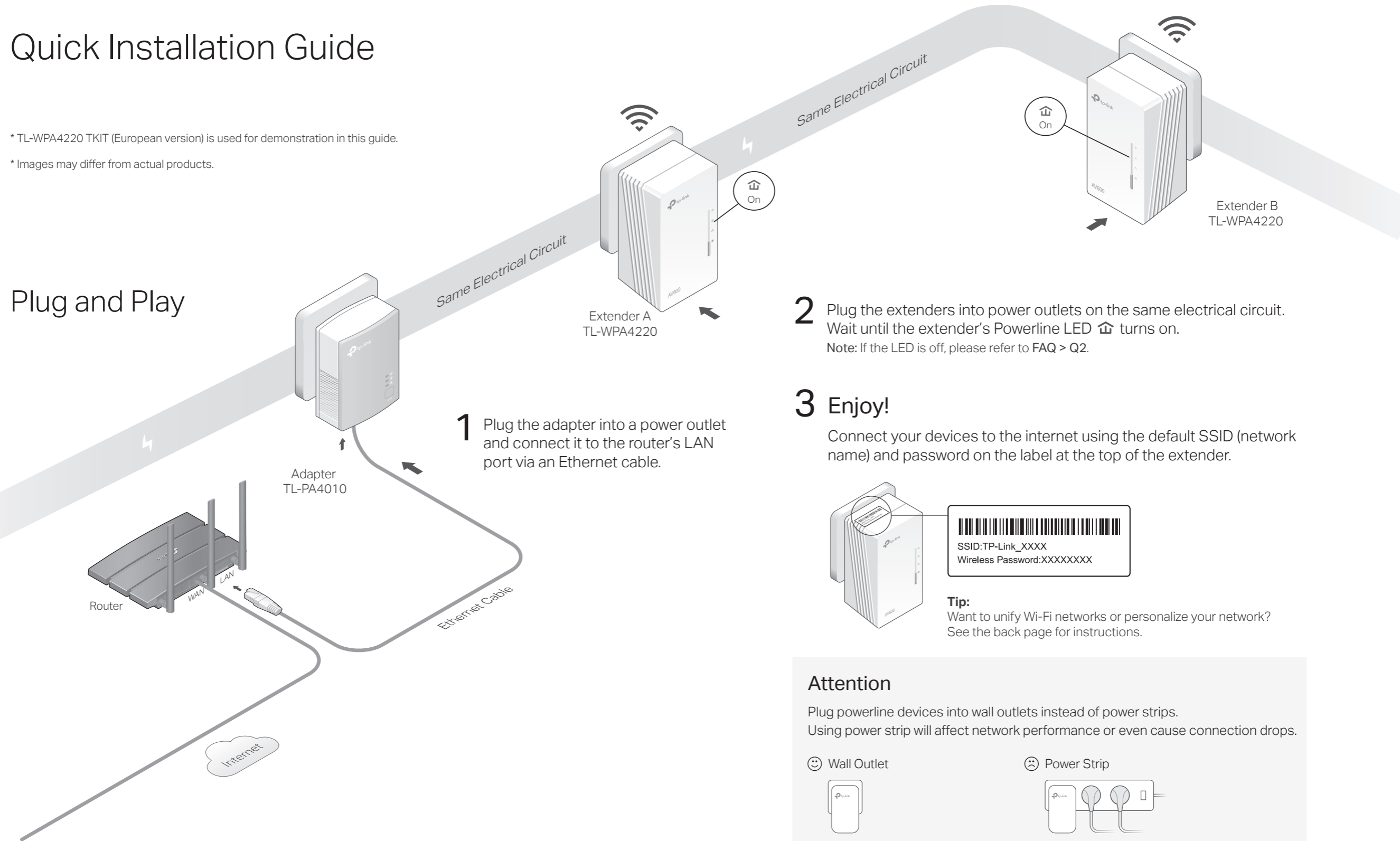


Quick Installation Guide

* TL-WPA4220 TKIT (European version) is used for demonstration in this guide.

* Images may differ from actual products.

Plug and Play



1 Plug the adapter into a power outlet and connect it to the router's LAN port via an Ethernet cable.

2 Plug the extenders into power outlets on the same electrical circuit. Wait until the extender's Powerline LED turns on.
Note: If the LED is off, please refer to FAQ > Q2.

3 Enjoy!
Connect your devices to the internet using the default SSID (network name) and password on the label at the top of the extender.

SSID: TP-Link_XXXX
Wireless Password: XXXXXXXX

Tip: Want to unify Wi-Fi networks or personalize your network? See the back page for instructions.

Attention



Plug powerline devices into wall outlets instead of power strips. Using power strip will affect network performance or even cause connection drops.

😊 Wall Outlet 😞 Power Strip

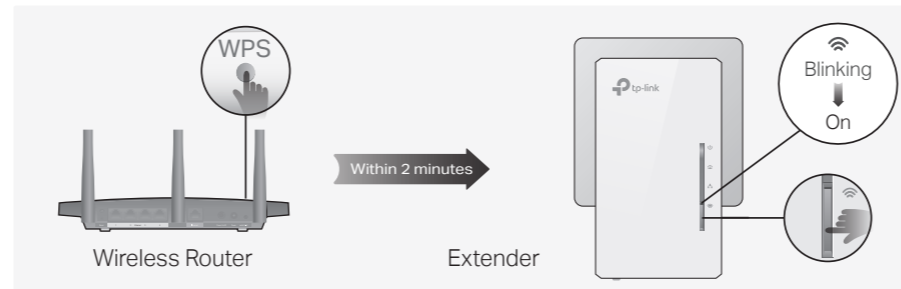
Unify Your Wi-Fi Networks via WPS

Copy SSID and password from your router via WPS to create one unified Wi-Fi network throughout your home.

Note: If your router doesn't have a WPS button, manually change the extender's Wi-Fi settings via the tpPLC app, tpPLC Utility, or web interface.

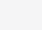
- 1 Plug in the extender in the same room as your router. Wait until the extender's Wi-Fi LED  turns on.
- 2 Press your router's WPS button. Within 2 minutes, press the extender's Wi-Fi button for 1 second. The extender's Wi-Fi LED  starts blinking. When it stays on, Wi-Fi settings are copied.



Note: If Wi-Fi settings are not copied within 2 minutes, manually change the extender's Wi-Fi settings.
- 3 Relocate the extender and enjoy the internet using your router's SSID and password.

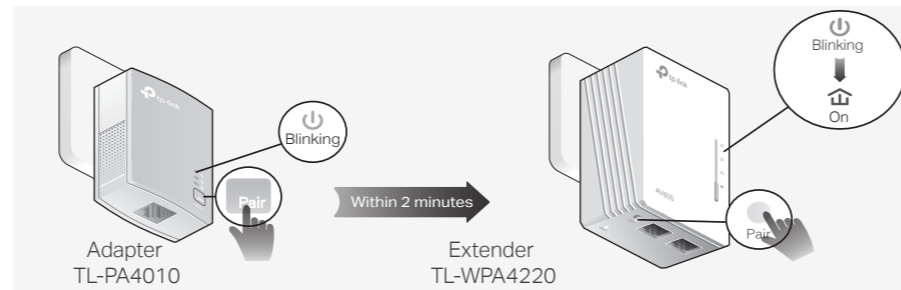


Create a Secure Powerline Network by Pairing

Note: You can only pair two devices at a time. We recommend that you plug in the powerline devices near each other when pairing.

- 1 Press the Pair button on the adapter for 1 second. Its Power LED  should start blinking.

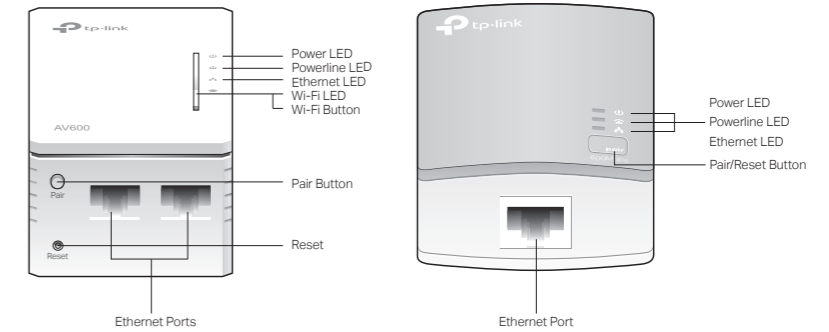
Note: If the Power LED does not blink, press the Pair button again.
- 2 (Within 2 minutes) press the extender's Pair button for 1 second. Its Power LED  should start blinking.
- 3 When the extender's Powerline LED  turns on, a powerline network has been successfully created.







Sync Wi-Fi Settings to More Extenders

If you have more extenders, simply plug in and pair each one with the existing adapter to join the network. Then the Wi-Fi settings will automatically sync from the existing extender to the new ones.

Physical Appearance



LED	STATUS	DESCRIPTION
	On	The powerline adapter/extender is on.
	Blinking	Quickly: Pairing is in process. Slowly: Power-Saving Mode is on.* (TL-PA4010 Only)
	Off	The powerline adapter/extender is off.
	On	The powerline adapter/extender is connected to a powerline network.
	Off	The powerline adapter/extender is not connected to any powerline network.
	On/Off	The Ethernet port is connected or not connected.
	On	The wireless function is enabled.
	Blinking	Quickly: The powerline extender is syncing 2.4G Hz wireless network settings. Slowly: The powerline extender is cloning 2.4G Hz wireless network settings from the main router.
	Off	The wireless function is disabled.
	Off	The wireless function is disabled.

* If the device connected to TL-PA4010 is turned off or inactive for more than 5 minutes, TL-PA4010 will automatically switch to Power-Saving Mode.

ITEM	DESCRIPTION
Pair Button	Press and hold for 1 second to set up or join a secure powerline network. Press and hold the Pair button until all LEDs turn off to reset TL-PA4010 to factory default settings.
Wi-Fi Button	Press for 1 second to start copying Wi-Fi settings from the router. Press and hold for about 5 seconds to turn Wi-Fi on or off.
Reset Button	Press and hold the Reset button for at least 2 seconds, then release the button to reset TL-WPA4220 to factory default settings.

Personalize Your Network

tpPLC App

For easy management via your smartphone or tablet, download the app from the App Store or Google Play, or simply scan the QR code.



Scan to download tpPLC App

tpPLC Utility

For easy management via your computer, download the utility on the product's Support page at <https://www.tp-link.com/support/download>.

Note: For detailed instructions, refer to the utility manual on the product's Support page.

Web Interface

To access all settings, connect to an extender wirelessly and visit <http://tplinkplc.net>.

Note: For detailed instructions, refer to the product manual on the product's Support page.

Frequently Asked Questions

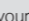
Q1. How do I reset my adapter and extender to factory default settings?

- A1. For TL-PA4010, press and hold the Pair button until all LEDs turn off and then come back on.
- A2. For TL-WPA4220, press and hold the Reset button for at least 2 seconds. Release the button and all LEDs turn off. When the LEDs turn back on, the reset process is complete.


Q2. What should I do if the Powerline LED is off?


- A1. Try another wall socket and make sure all powerline devices are on the same electrical circuit.
- A2. Try to set up a powerline network by pairing. Refer to the section above for instructions.
- A3. If the problem persists, contact our Technical Support.

Q3. What should I do if there is no internet connection in my powerline network?


- A1. Make sure all powerline adapters and extenders are on the same electrical circuit.
- A2. Make sure the Powerline LEDs  are lit on all of your powerline devices. If they are not, pair all devices again.
- A3. Make sure all devices are correctly and securely connected.
- A4. Check if you have an internet connection by connecting the computer directly to the modem or router.


Q4. What should I do if a successfully-paired extender does not reconnect after it is relocated?

- A1. Make sure all powerline adapters and extenders are on the same electrical circuit.
- A2. Try to pair the extender again, and make sure the Powerline LED  is on.
- A3. Check for possible interference due to a washing machine, air conditioner or other household appliances that may be too close to one of the powerline devices. Plug the appliance into the integrated electrical socket to remove the electrical noise if your powerline device has an integrated electrical socket.

 For technical support, replacement services, user guides, and other information, please visit <https://www.tp-link.com/support>, or simply scan the QR code.



 To communicate with TP-Link users or engineers, please join the TP-Link Community at <https://community.tp-link.com>.

 If you have any suggestions or needs for our product guides, you are welcome to email techwriter@tp-link.com.cn.

TP-Link hereby declares that the device is in compliance with the essential requirements and other relevant provisions of directives 2014/53/EU, 2009/125/EC, 2011/65/EU and (EU)2015/863. The original EU Declaration of Conformity may be found at <https://www.tp-link.com/en/support/ce/>. TP-Link hereby declares that the device is in compliance with the essential requirements and other relevant provisions of the Radio Equipment Regulations 2017. The original UK Declaration of Conformity may be found at <https://www.tp-link.com/support/ukca/>.

Safety Information

- Keep the device away from water, fire, humidity or hot environments.
- Do not attempt to disassemble, repair, or modify the device. If you need service, please contact us.
- Do not use the device where wireless devices are not allowed.
- The socket-outlet shall be installed near the equipment and shall be easily accessible.
- Plug the powerline devices directly into the wall outlets but not the power strips.

Please read and follow the above safety information when operating the device. We cannot guarantee that no accidents or damage will occur due to improper use of the device. Please use this product with care and operate at your own risk.