

CleanMate QQ3T (Scheduler*) Model

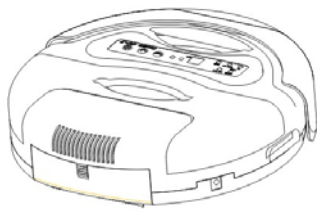
Quick Start Guide

***Refer to a separate instruction on how to set up Scheduler functions**

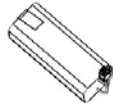
Step 1: Check QQ3 Unit and Accessories in the Package

Please check and make sure the following items are inside your package.

For QQ3T model without Sonic Walls



QQ3



Rechargeable
Battery



Self-charging base



Charger



User Manual

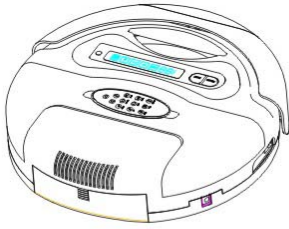


Remote Control

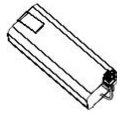


Filter(x2)

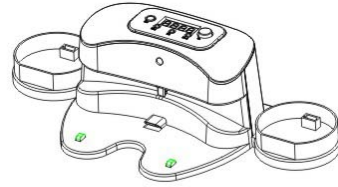
For QQ3LT model with two Sonic Walls



QQ3LT



Rechargeable
Battery



Self-charging base



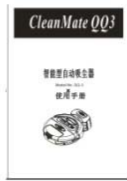
Charger



Sonic Wall
(X2)



Rechargeable Battery
(For Sonic Wall)
(X4)



User Manual



Remote Control



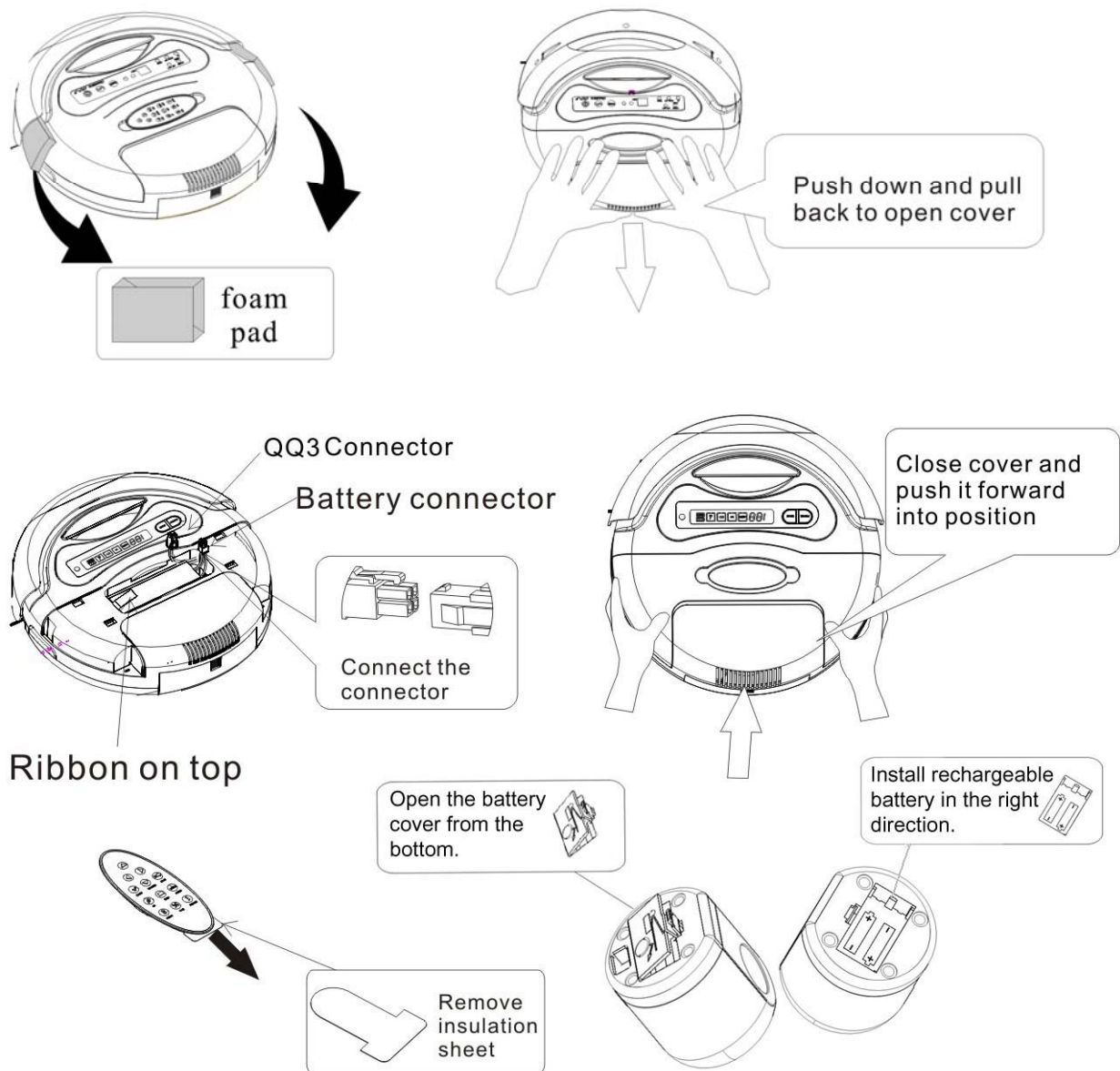
Filter(x2)

Step 2: Install the Battery

Remove both bumper protection foam pads before first use of the CleanMate unit.

Remove the insulation sheet under remote battery before using the remote for the 1st time.

Battery installation – open battery cover, connect the battery wire connector to the connector on QQ3 unit, put battery securely in battery compartment, and close the battery cover.



Step 3: Charge the Battery (2 ways)

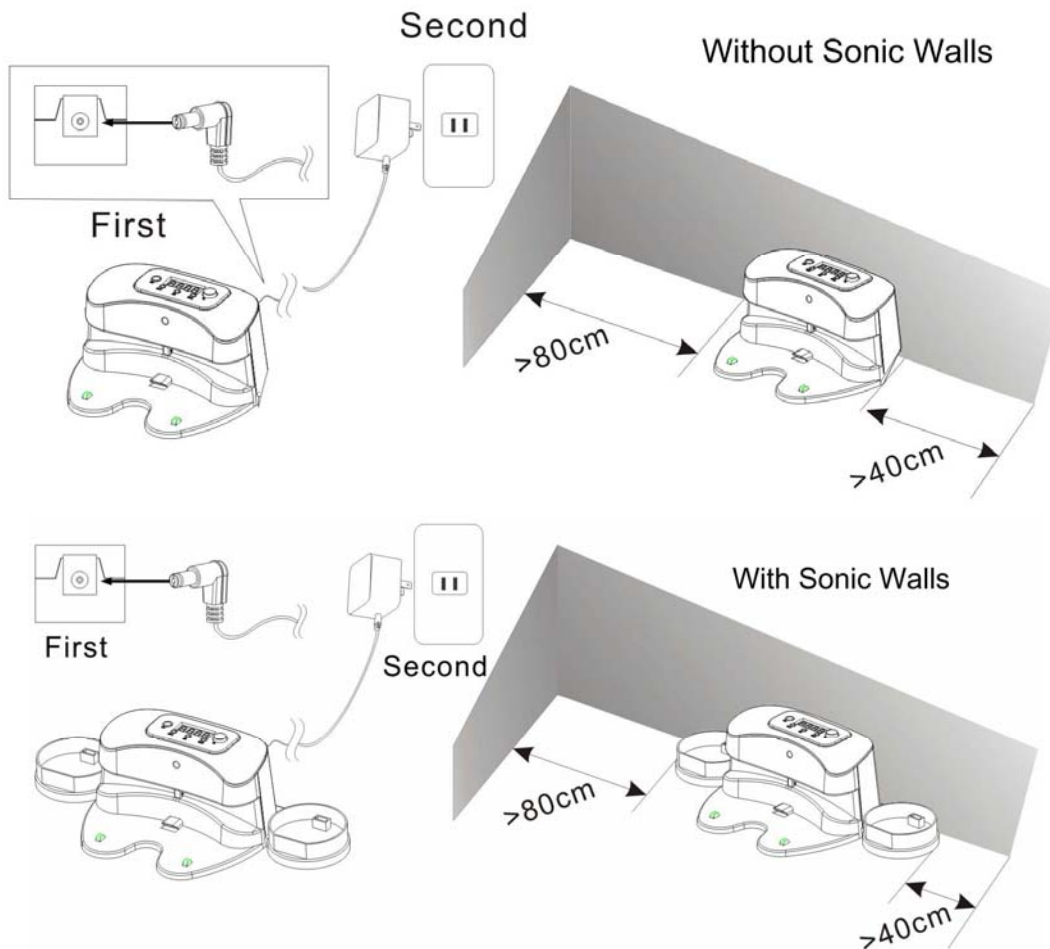
Charge the battery on home charging base:

Make sure battery charger connector is plugged to the power socket on charging base first, and then plug the other end of charger to wall outlet.

Position charging base securely against the wall and leave enough clearance space on both sides. Also make sure there is open space in front of the charging base for QQ3 to dock onto the base.

Put QQ3 unit about 2.5 ft (or less) in front of charging base, and press “HOME” button on remote control to let QQ3 automatically dock to charging base and charge the battery.

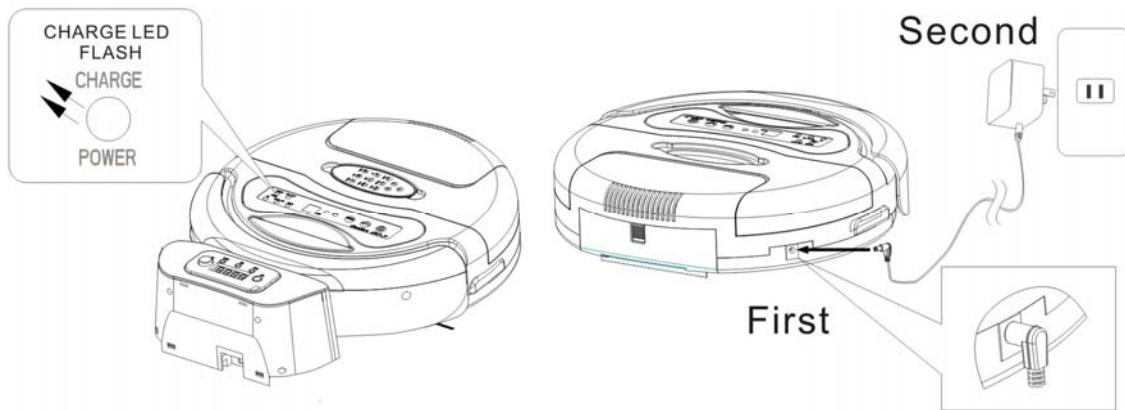
Blue LED light will be blinking to indicate that battery is being charged. It normally takes about 3 hours to have the battery fully charged. It is recommended to charge the CleanMate battery overnight before first use.



Charge battery manually (without using home charging base) on QQ3T:

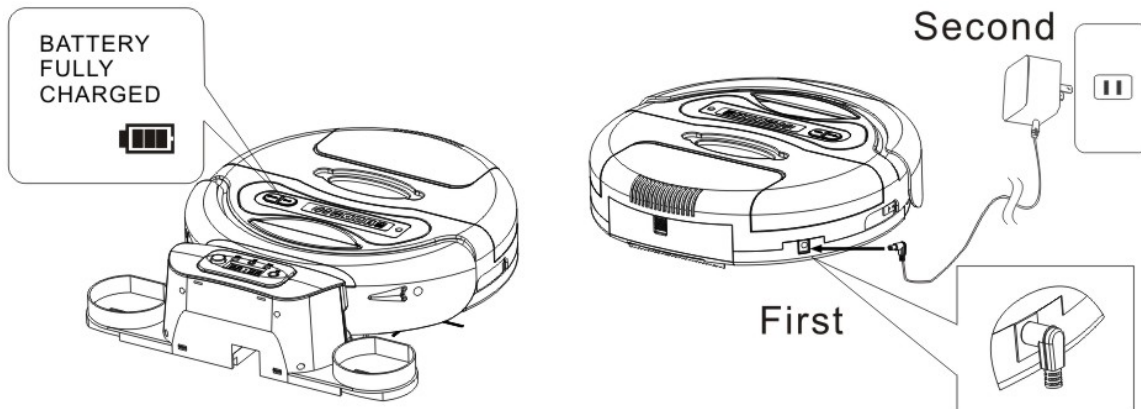
To charge the battery manually without using charging base, just plug battery charger connector to the charging socket on QQ3 unit first, and then plug the other end of charger to wall outlet.

Blue LED light on QQ3T unit will be blinking to indicate that battery is being charged. It normally takes about 3 hours to have the battery fully charged. It is recommended to charge the CleanMate battery overnight before first use.



Charge battery manually (without using home charging base) on QQ3LT:

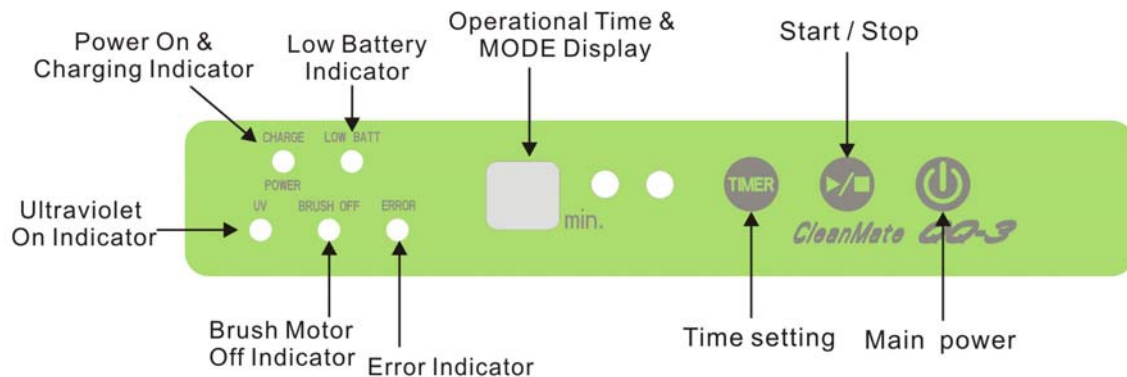
Battery icon on QQ3LT unit will be blinking to indicate that battery is being charged. When battery is fully charged, battery icon will be steady as shown.



Step 4:

Start / Stop Cleaning for QQ3T model

1. Press “POWER” button on QQ3 to turn it on. The power LED (solid blue) will light up.
2. Press “Start/Stop” button once on QQ3 unit to start the cleaning. Press this button again to stop cleaning.
3. Press “TIMER” button on QQ3 unit to set the operation running time. The numerical panel on QQ3 will display the running time & cleaning mode. When QQ3 is powered on for the 1st time, default running time is set to 40 minutes. User can change running time from 10 to 90 minutes in 10-minute intervals by pressing the TIMER button.
4. Set CleanMate running time based on the size of cleaning area. Regularly remove the debris and hairs around brushes and wheels to conserve battery power and increase battery life time.
5. When the battery power is low, the LOW BATT light on QQ3 will blink in red.
6. In the following situations, ERROR light will light up: battery over charging, motor overloading, and wheel traction losing (lifted off ground, etc) for more than 3 seconds.



LED and Audible Alert Indicators

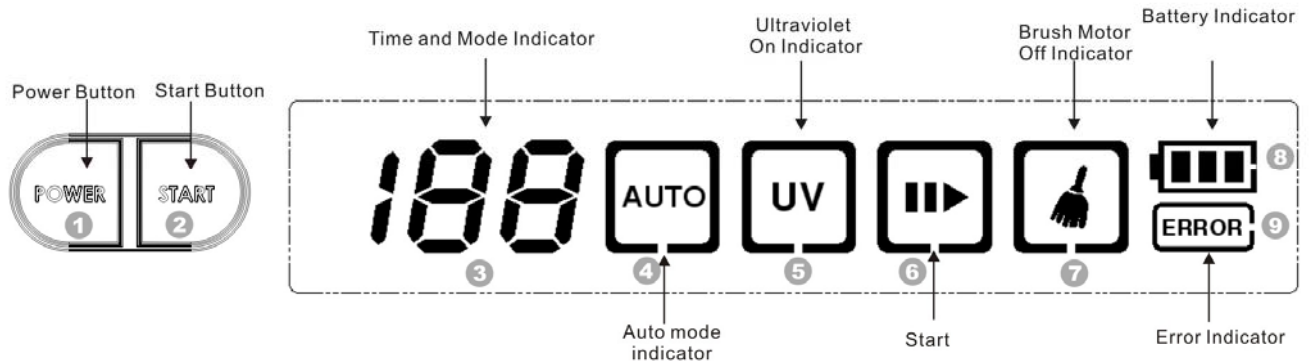
Audible indicator

Status	Description
Long Beep once followed by one Short Beep	Times up (when the cleaning timer was set)
	Battery Low, cleaning function off
Long Beep once	Error
Short Beep three times	Fully charged
Short Beep three times and One long Beep	Fully charged and start vacuuming again (when the docking station is set that after fully charged, QQ3 will go out to vacuum again)

LED indicator

Color of LED Lights	Description
Green	Steady – Brush Motor Off
Red	Blinking – Battery Low
	Steady - Error
Blue	Steady – Fully Charged / Power On
	Blinking - Charging
Yellow	UV On

Start / Stop Cleaning for QQ3LT model



LCD Control Panel and Functions

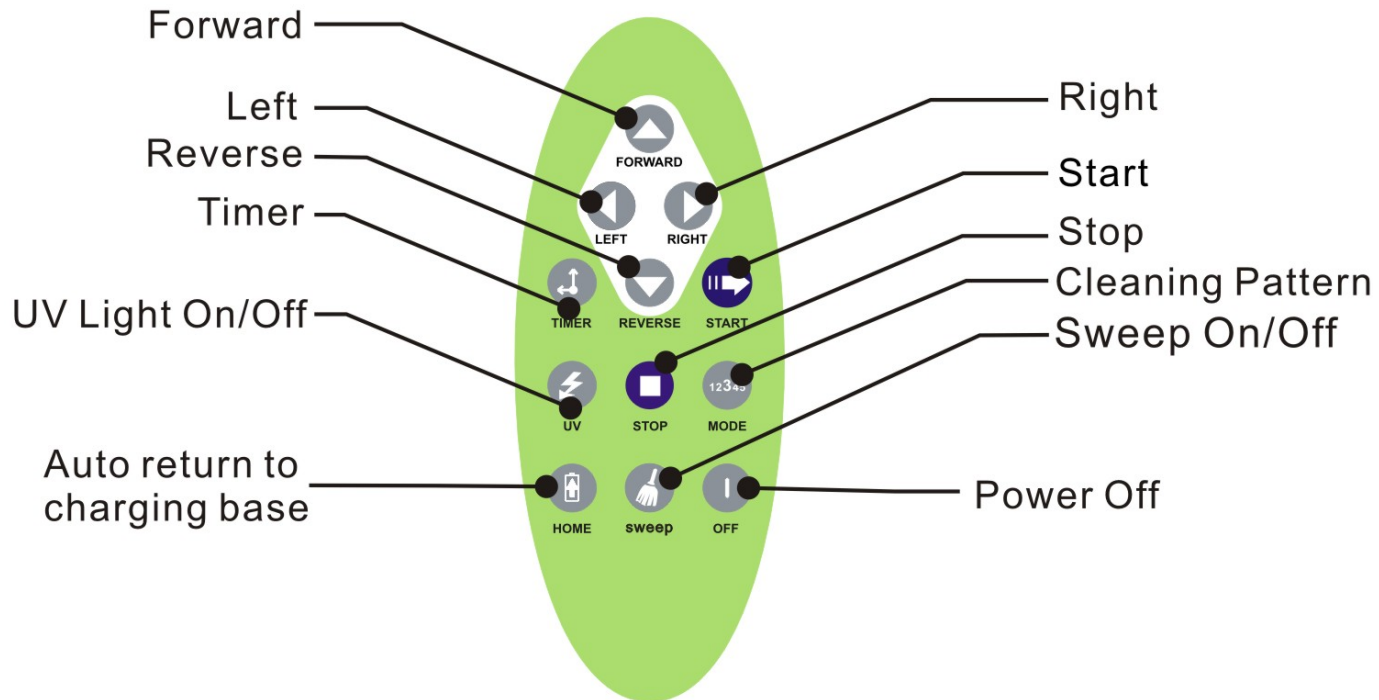
1. Power Button: To turn on QQ3LT
2. Start Button: To start QQ3LT
3. Time and Mode Indicator: The numerical panel on QQ3LT will display the running time & cleaning mode. When QQ3LT is powered on for the 1st time, default running time is set to 40 minutes. User can change running time from 10 to 90 minutes in 10-minute intervals by pressing the TIMER button on remote control unit.
4. Auto: Light up when the cleaning patterns are repeated automatically
5. UV: Light up when QQ3LT UV light is activated via remote control unit.
6. Start: Light up when QQ3LT started working
7. Sweep: Light up when the brush motor is turned on by starting QQ3LT; light off when brush motor is turned off via remote control unit.
8. Battery indicator:

Battery indicator	Battery Status
Three Cells	Fully Charged
One Cell	Battery Low
Blinking	Charging

9. Error: Light up when battery over charging, motor overloading, and wheel traction losing (lifted off ground, etc) for more than 3 seconds

Remote Control Operation

Make sure to remove the insulation plastic sheet under remote battery before using the remote for the first time.

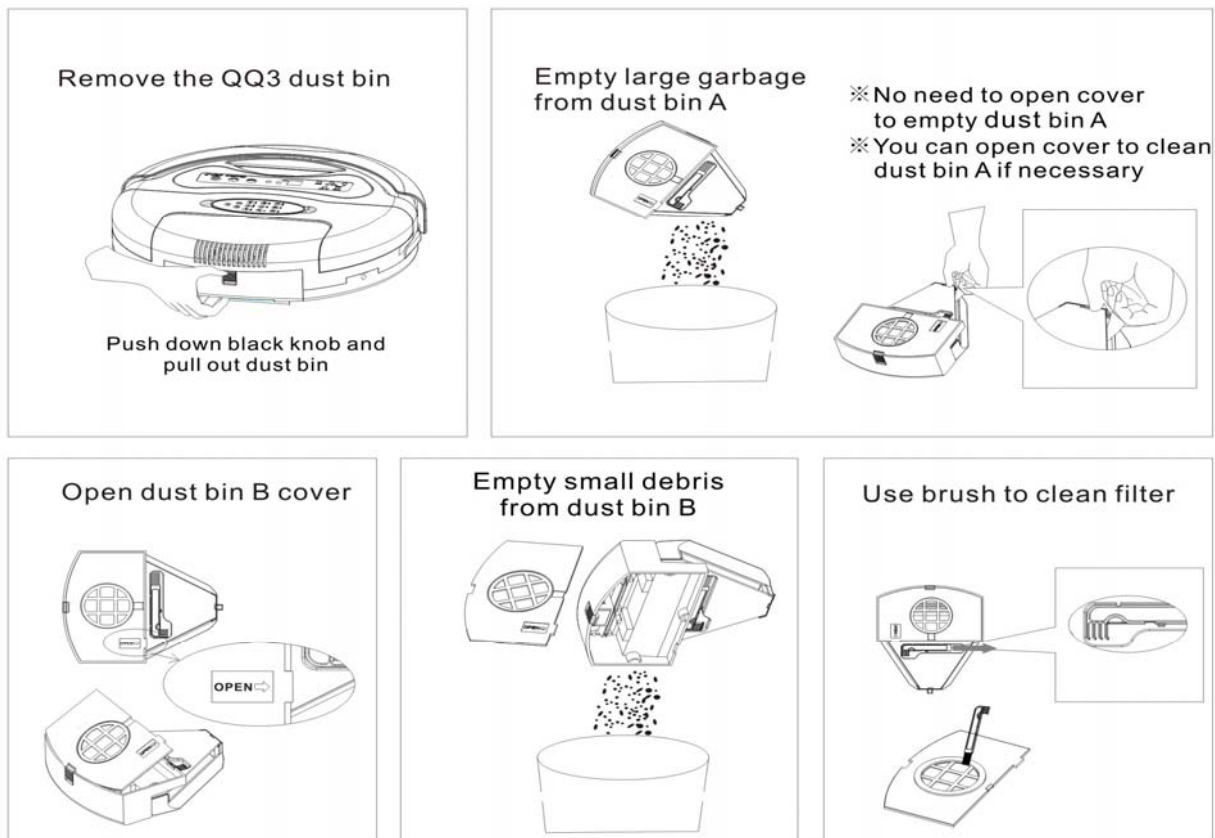


Remote Functions:

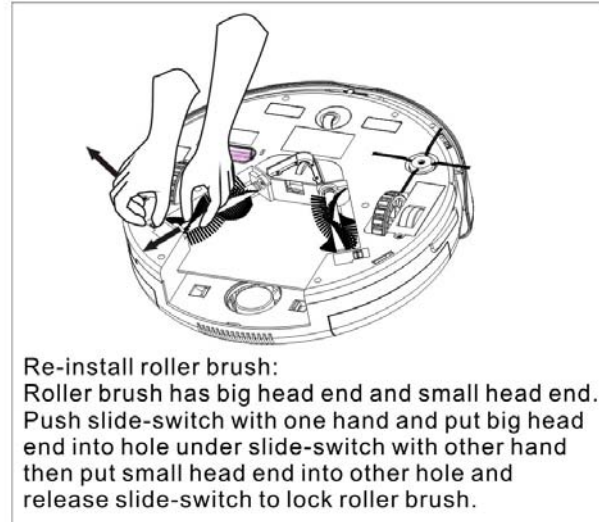
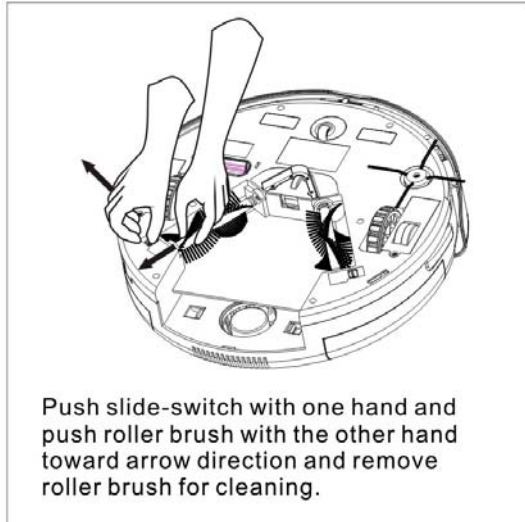
1. **START** button: Press **START** to begin the automatic cleaning of your room.
2. **STOP** button: Press **STOP** to stop the operation of QQ3. You will hear a long beep sound.
3. **TIMER** button: Press **TIMER** to change the cleaning time.
4. **Direction buttons**: **FORWARD**: when you press this button, QQ3 will move forward until user press **FORWARD** again, or when it hits an obstacle. **RIGHT**, **LEFT** and **BACKWARD** buttons: press these buttons to manually drive the QQ3 unit to go to right, left or backward directions.
5. **MODE** button: Press this button to select 1 of the 5 available cleaning mode patterns. The default operation mode is Automatic mode. In this normal mode, CleanMate will go through all 5 pre-programmed cleaning patterns automatically to achieve the best cleaning effects. Presses **MODE** button one more time to select another cleaning pattern.

- a) Press “MODE” button once (1st time) to choose “Spiral” mode. The timer on QQ3 will display “1” for one minute and then show the cleaning time setting. When QQ3 hits an object while running in this mode, it will stop the movement and wait for further instruction.
 - b) Press “MODE” button again (2nd time) to choose “Special Bounce” mode. The Timer on QQ3 will display “2” for one minute.
 - c) Press “MODE” button again (3rd time) to choose “Along Wall” mode. The Timer on QQ3 will display “3” for one minute.
 - d) Press the “MODE” button again (4th time) to choose S Shape” mode. The timer on QQ3 will display “4” for one minute.
 - e) Press the “MODE” button again (5th time) to choose “Polygonal Spiral” mode. The Timer display on QQ3 will show “5” for one minute.
 - f) Press the “MODE” button again (6th time), and the QQ3 will go back to the default Automatic cleaning mode. The Timer display on QQ3 will show “A” for one minute.
6. UV button: Turn the UV light ON or OFF on QQ3.
 7. SWEEP button: Press this button to turn brush motor ON or OFF.
 8. HOME button: Press this button to direct the QQ3 to return to home charging base.
 9. OFF button: Press this button to turn OFF the QQ3.

Step 5: How to the Empty Dust Bin



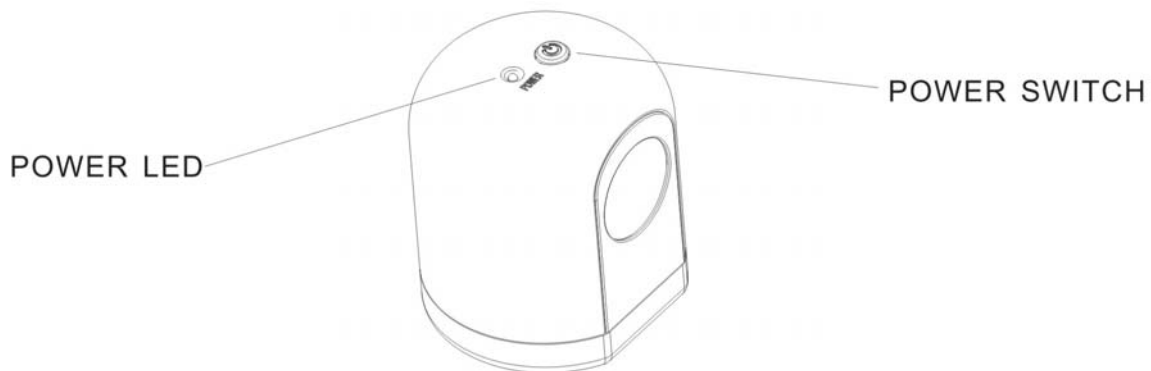
Step 6: How to Clean the Roller Brush



Step 7: How to Set Up Sonic Walls (if it is available)

The CleanMate Sonic Walls create an invisible barrier that QQ3LT will not cross.

Sonic Wall

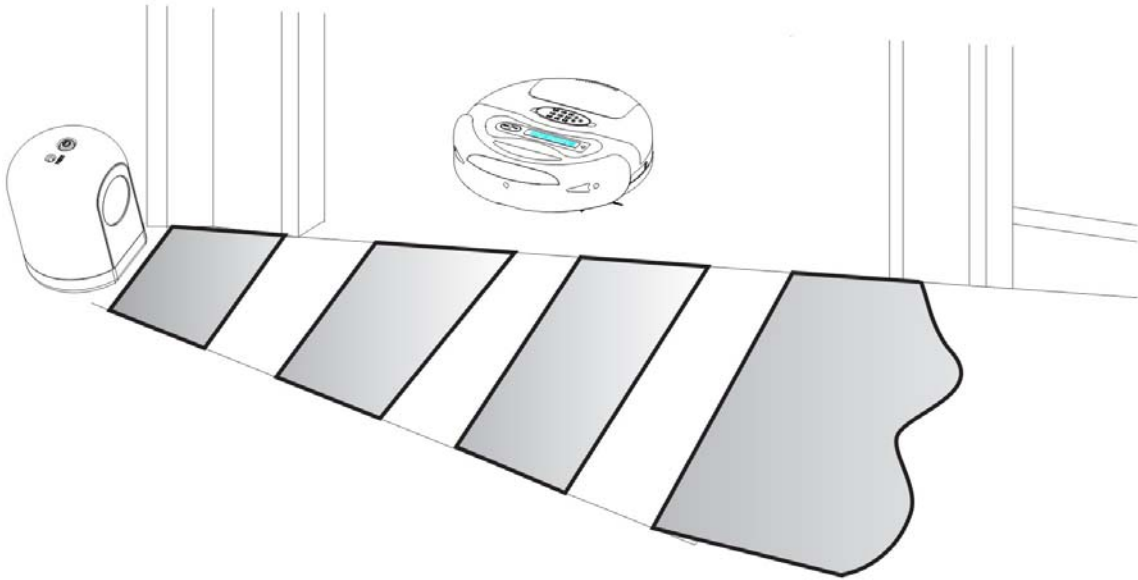


How to use Sonic Walls

Push down the power switch, “POWER” green LED is on and Sonic Wall works. Push power switch again will power off.

Sonic Walls can be set to block an area 1.5M (5ft.) long.

Sonic Wall beam is keyhole shaped. A larger cone-shaped section blocks off areas of your home where you don't want QQ3 to go.



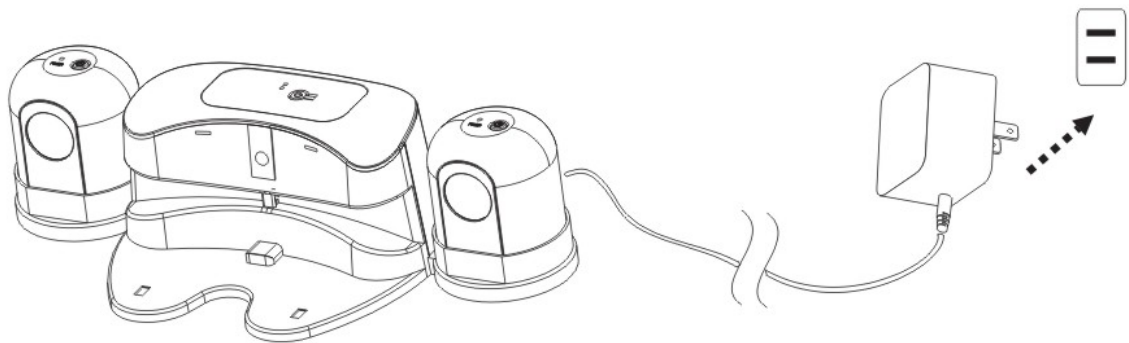
If “POWER” green LED blinks, Sonic Wall battery needs to be recharged.

TIP: Use the Sonic Wall to block doorway or keep QQ3 away from cords. Confining QQ3 to a single room will accelerate cleaning.

TIP: For best performance place the Sonic Wall on outside of the doorway you wish to block.

Charging Sonic Walls battery

Charging Base has built in USB ports, you can dock the Sonic Walls into Charging Base to charge battery inside Sonic Walls.



If you have question or issue on the product, do not return it to store.

Please contact technical support first with live chat at:

<http://cleanmate.metapo.com>



You can register your product for warranty service at:

<http://cleanmate.metapo.com>