

MONSTER MOUNTS™

S L I M F L A T M O U N T

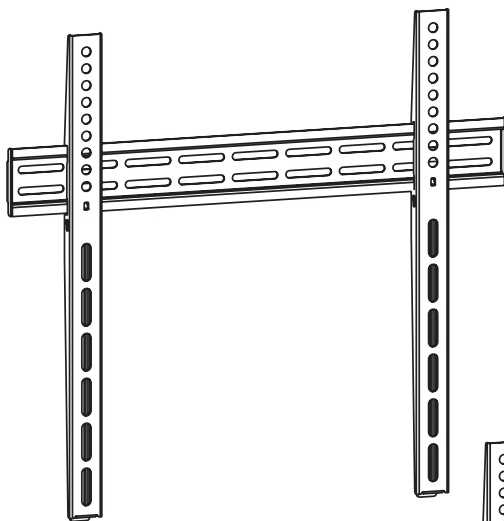
Display Size: 24" - 55"
Maximum load: 70 lbs / 32 kg
VESA Patterns: 75 x 75 to 400 x 400

MF441

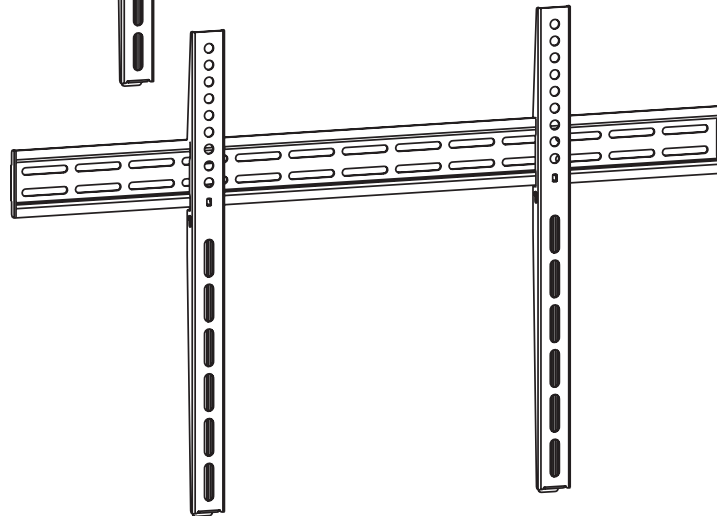
Display Size: 30" - 80"
Maximum load: 75 lbs / 34 kg
VESA Patterns: 75 x 75 to 600 x 400

MF641

U S E R M A N U A L



MF441*



MF641

*MF441 used in diagrams, steps also apply to MF641.

ATTENTION: BEFORE INSTALLING, READ ALL WARNINGS AND CAUTIONS ON REVERSE SIDE.


FOR MORE INFORMATION, GO TO:


www.montermounts.com


Warnings & Cautions


IT IS HIGHLY RECOMMENDED THAT THIS PRODUCT BE INSTALLED BY A PROFESSIONAL.


PLEASE REVIEW THIS INSTRUCTION MANUAL COMPLETELY BEFORE STARTING THE INSTALLATION PROCESS.


 **WARNING:** A WARNING alerts you to the possibility of serious injury or death if you do not follow the instructions.


 **CAUTION:** A CAUTION alerts you to the possibility of damage or destruction of equipment if you do not follow the corresponding instruction.

 **WARNING:** Improper installation can result in serious personal injury! Make sure that the structural members can support a weight factor five times the total weight of the equipment. If not, reinforce the structure before starting the installation.


 **WARNING:** Be aware also of the potential for personal injury or damage to the unit if it is not adequately mounted.

 **WARNING:** The installer is responsible for verifying that the wall or ceiling to which the mount is anchored will safely support the combined load of all attached components or other equipment.

 **WARNING:** The weight of the display placed on the mount must not exceed the maximum load capacity of the mounts.

 **WARNING:** Watch for pinch points. Do not put your fingers between movable parts.

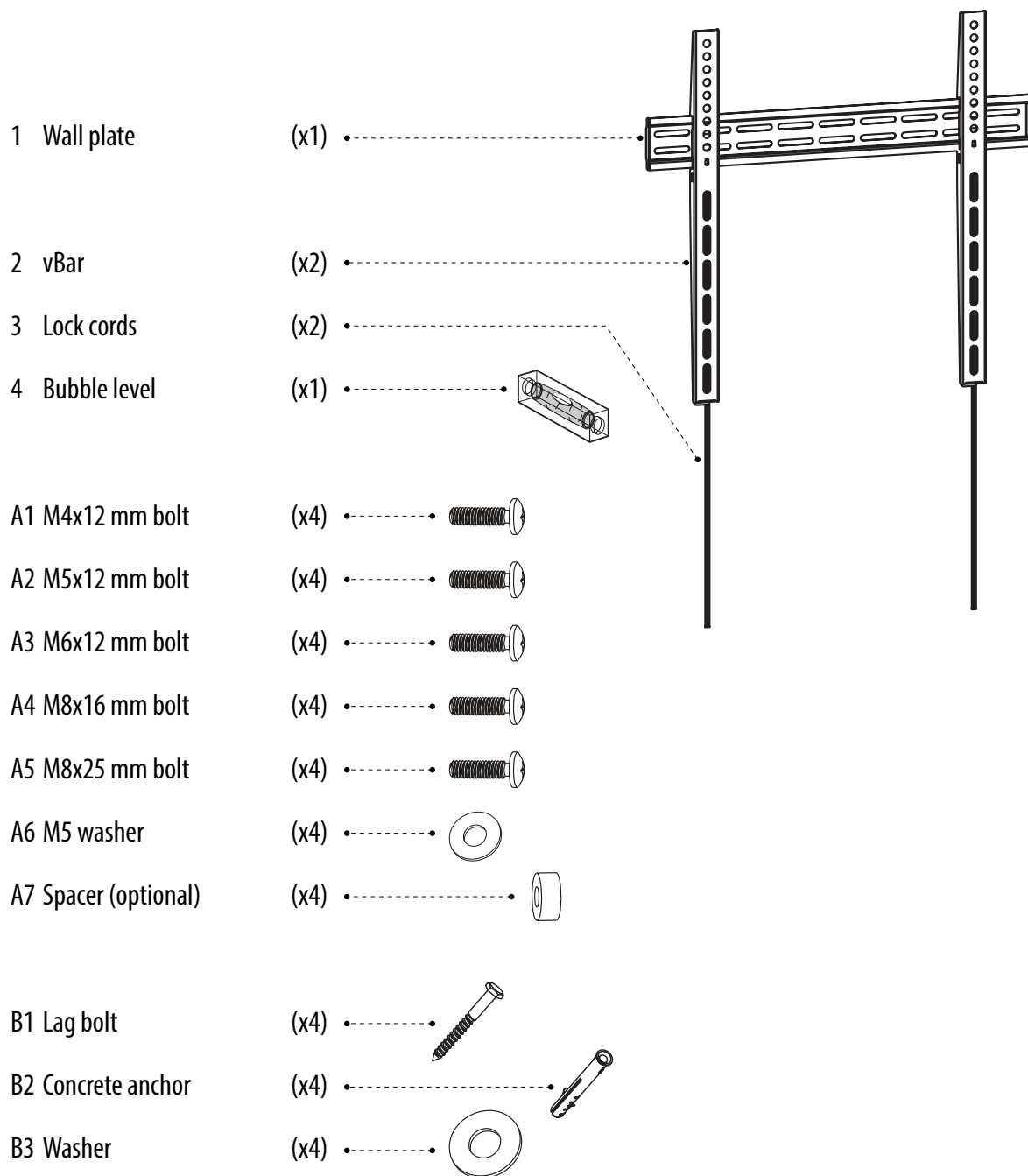
 **WARNING:** Make sure the mount and brackets are correctly oriented.

 **CAUTION:** Check the unit for shipping damage before you begin the installation.

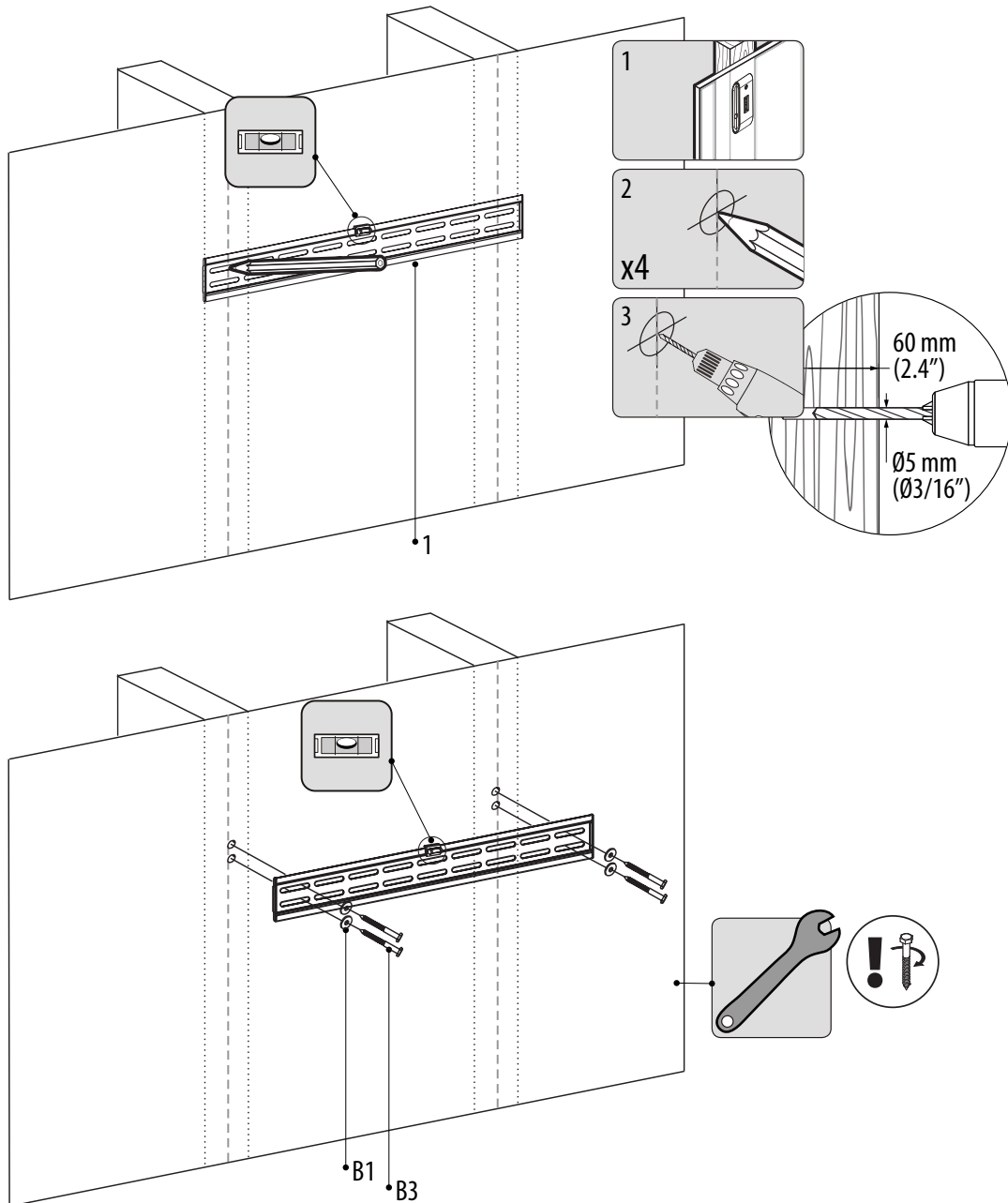


CAUTION: Do not overtighten bolt.

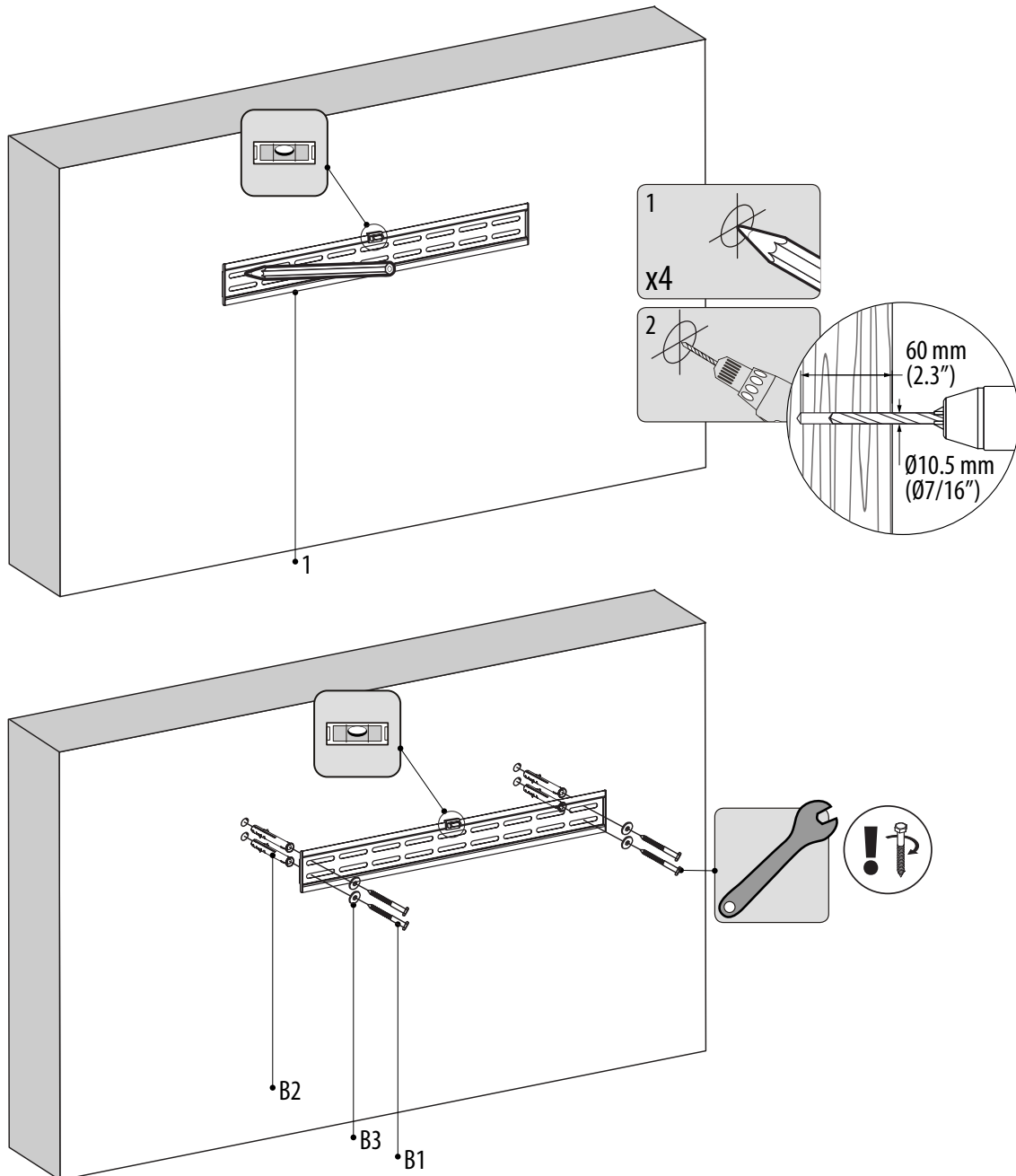
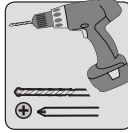
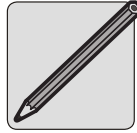
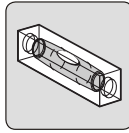
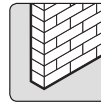
Package contents



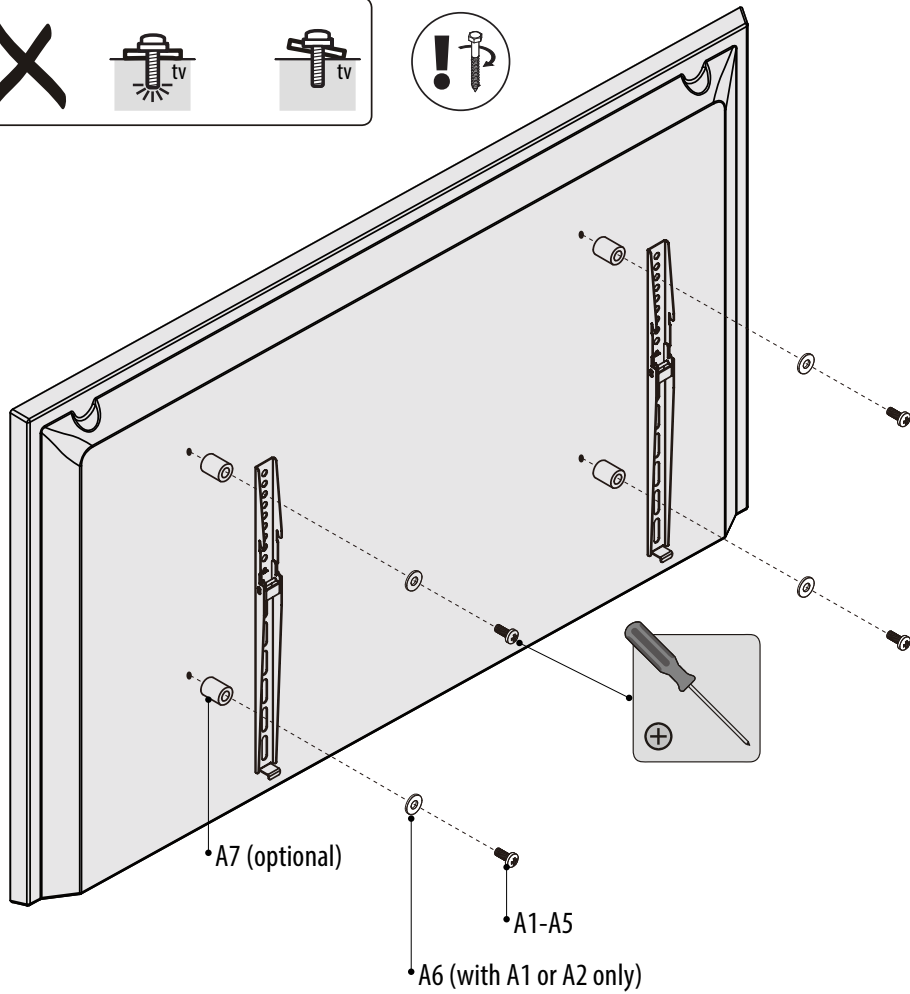
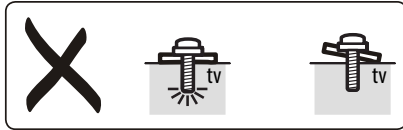
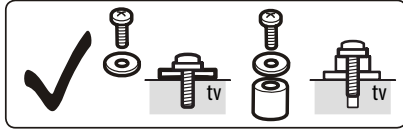
1a. Mount on Wood Wall



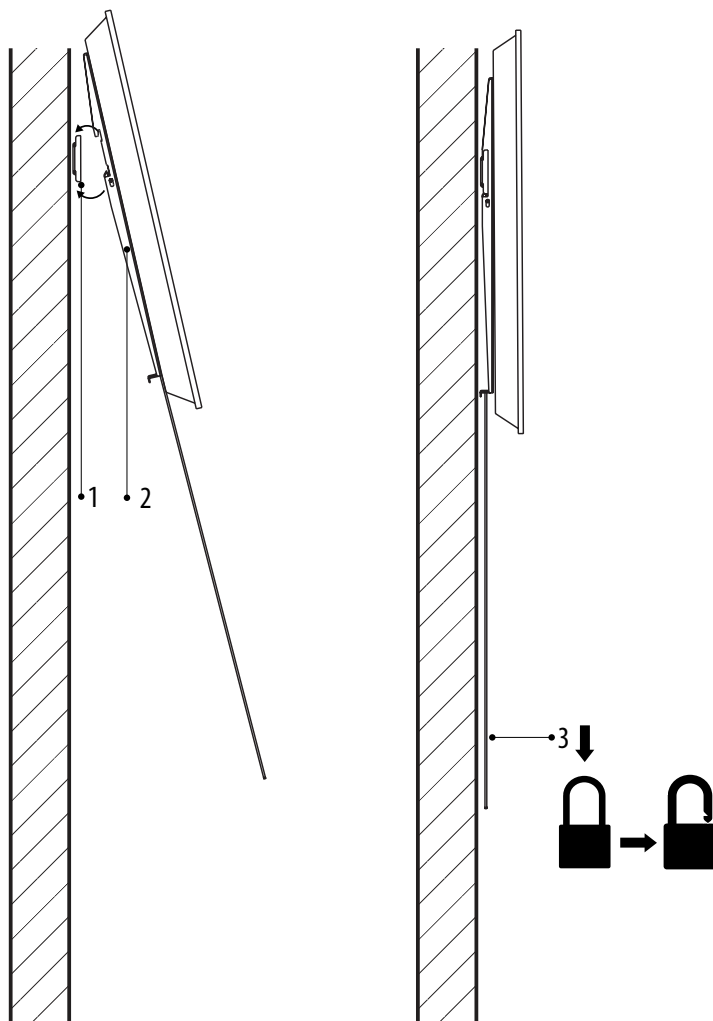
1b. Mount on Solid Brick or Concrete Block

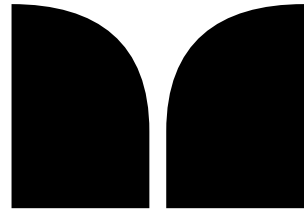


2. Install vBar Brackets



3. Hook Display on Wall Plate / Unlock





Monster Mounts

20218 Hamilton Avenue
Torrance, CA 90502
USA

FOR MORE INFORMATION, VISIT:
www.montermounts.com

AUM118 v2.5