



digital technology
digital technology digital technology



Pump Shower Drainage Solutions **Enabling Independent Living**

400,000
WHALE KITS INSTALLED IN THE UK



Proud to manufacture in the UK



Where gravity drainage is not an option... **Whale is here to help**

A

Instant Match® - Digital control  **Bluetooth®**

B

Instant Match Premium - Digital control for mixer showers

C

Switch Connect - Flow Switch Control

D

Switch Connect Mixer - Dual flow switch control

E

Digital Smoothflow - Ultimate control

F

Spares & Accessories

G

Compatible Showers

Nationwide service network

Whale's nationwide team of certified service engineers ensures that wherever the installation, help is only a call away.



Technical Helpline

Whale's dedicated technical helpline is there to assist with specification requirements, installation advice or any questions you may have with regards to Whale® Healthcare products.

0345 9090 912

Follow us on:

 **WhaleHealthcare**

 **@WhalePumps**

 **@WhaleCare**

 **@Whalepumps**

Digital Control

The Instant Match® using Bluetooth wireless technology

- Bluetooth two way communication

Whale® together with industry leader Mira have collaborated to use Bluetooth wireless technology

- A Bluetooth connected electric shower and digital waste pump system



Why choose Whale?

- **Integral flood reduction system (Instant Match)**
- **Robust performance**
Hair, gels, grit and other shower waste pass through the pump without blocking
- **Maintenance free**
No pump filter is required therefore no internal cleaning is necessary
- **Practical design**
Valves integral to the pump prevent odours escaping into the bathroom from the waste pipe
- **Quiet performance**
- **On-site nationwide support**
- **10 Years service parts availability**



drainagesupport@whalepumps.com
whalepumps.com/psd

A

Instant Match® - Digital control



Maximum 5 metres range for wireless signal within the bathroom

To minimise gulley suction noise, the Instant Match[®] uses a digital signal* sent from the Mira Advance Flex Extra** to automatically adjust the pump speed in relation to the flow rate of the shower. No set-up necessary – gives plug and play operation.

**can also be hard wired. See section G for compatible hard wired showers.*

***see below for compatible shower.*

Features and Benefits

- Digital control with Bluetooth wireless technology
- Built in flood reduction system
- Quick and secure pairing
- Variable matched speed
- Quiet gulley - Whale[®] Whisper wet floor gulley included

Instant Match Approvals

- The Instant Match Kit is CE marked and complies with European standards for:
 - EMC (Electromagnetic Compatibility)
 - LVD (Low Voltage Directive)
- Pumps and Transformers are rated against moisture and particle ingress
- The Instant Match[®] Wireless radio signal is licensed for public use and meets radio standards R&TTE: ETSI EN300 328 V1.9.1

Specification Information

Description	Product Code
Whale Instant Match Wireless/Hard Wired Kit	SDP134T
Mira Advance Flex Extra	1.1785.005 (J09N)

To use the Instant Match[®] with any electric shower installation fit the Sika Flow Sensor - Part No. SDS263T

Integral Flood Reduction System

In the situation where you have a power failure to the Whale pump, the Mira shower will recognise this instantly and begin its ten second shutdown sequence. This feature further reduces the risk of flooding.

Active Link
Includes Active Link technology



Whale Instant Match[®] Kit
SDP134T



Sika Flow Sensor
SDS263T



INSTANT MATCH[®]
premium

The Instant Match Premium is built on 20 years of experience to make our quietest kit yet. Designed specifically for mixer showers to allow you to create step free showering in the most challenging locations. Ideal for use with combi boilers.

Features and Benefits

- Quiet operation with built in anti-vibration mounts. Acoustically tested
- Switch Mode technology used in the transformer
- Standby power 0.45W*
- Self cleaning flow sensors
- Lightweight all in one unit
- Plug and Play operation

Note:

The Instant Match Premium may be used with normal gravity gulleys by reducing the pipe size to 22mm

Instant Match Approvals

- The Instant Match Kit is CE marked and complies with European standards for:
 - EMC (Electromagnetic Compatibility)
 - LVD (Low Voltage Directive)
- Pumps and Transformers are rated against moisture and particle ingress

* Meets Erp (Dec 2008): Standby Off Mode Implementing Measure

Specification Information

Description	Product Code
Instant Match Premium	SDP303T



SWITCH CONNECT

The original automatic shower drain kit with proven reliability is combined with 6 pump speed settings, Active Link diagnostics and Whale® Whisper Gulley options.

Features and Benefits

- 6 pump speed settings designed to suit electric showers
- Adjustable pump speed minimises gulley suction noise
- Quiet gulley - Whale® Whisper wet floor gulley included in kit BP1578
- High performance - draws 3 metres from gulley

The transformer includes patented Active Link diagnostics

- Light indicates power present when test button is pressed
- Light indicates flow switch operation
- Aids installation and maintenance

Connect directly to compatible electric showers (See Section G)

- No need to fit flow switch with compatible showers
- The flow switch signal wire from the transformer connects to a terminal inside the shower
- For connections see Whale web site for [YouTube](#) videos and instructions

Specification Information

Description	Product Code
Switch Connect Wet Floor Gulley Kit	BP1578
Switch Connect Tray Gulley Kit	BP1558B



Active Link
Includes Active Link technology



Wet Floor and
Tray Gulley kit
BP1578



Tray Gulley kit
BP1558B

D

Switch Connect Mixer - Dual flow switch control

SWITCH CONNECT MIXER

Mixer valve conversion kit required - Part Number AK1570



The original automatic shower drain kit with proven reliability is combined with 12 pump speed settings, Active Link diagnostics and Whale® Whisper Gulley options.

Features and Benefits

- 12 pump speed settings designed to suit mixer showers*
- Adjustable pump speed minimises gulley suction noise
- Quiet gulley - Whale® Whisper wet floor gulley included in kit BP1578
- High performance - draws 3 metres from gulley

*Suitable for showers up to a flow rate of 12ltr/min

Note. For mixer shower installations an additional flow switch is required - Part No. AK1570 (includes 10ltr/min flow regulator)

The transformer includes patented Active Link diagnostics

- Light indicates power present when test button is pressed
- Light indicates water flow to shower
- Aids installation and maintenance

Specification Information

Description	Product Code
Switch Connect Wet Floor and Tray Gulley Kit	BP1578
Switch Connect Tray Gulley Kit	BP1558B
Mixer Valve Conversion Kit	AK1570



Active Link
Includes Active Link technology



Wet Floor and
Tray Gulley kit
BP1578



Tray Gulley kit
BP1558B



Mixer Valve
Conversion Kit
AK1570

DIGITAL SMOOTHFLOW

For mixer valve installations, an additional flow sensor is needed - Part Number SDS263T

1

The flow sensors measure the flow rate going to the shower head. This information is sent to the control unit.



2

The control unit precisely matches the pump speed to the shower flow rate.

3

The matched pump speed and shower flow rate ensures a quiet gully.



The Digital Smoothflow kit precisely matches the pump flow rate to the shower flow rate, therefore ensuring a quiet gulley.

Features and Benefits

- Pump speed is commissioned to each installation*
- Automatic variable pump speed fine tunes the system, ensuring a quiet gulley
- Suitable for electric and mixer shower installations
- Quiet gulley - free Whale Whisper wet floor gulley included with each kit

Note. For mixer shower installations an additional flow sensor is required - Part No. SDS263T

*Suitable for showers up to a flow rate of 12ltr/min.

Specification Information

Description	Product Code
Digital Smoothflow Kit	SDP113T
Sika Flow Sensor	SDS263T



Digital Smoothflow Kit
SDP113T



Sika Flow Sensor
SDS263T

DRY DECK

Designed to allow the installation of wet rooms and walk in showers in even the most challenging locations.

This kit is compatible with mixer valve showers where the flow rate exceeds 12 ltr/min up to 20 ltr/min.

Specification Information

Description	Product Code
Whale Dry Deck	SDP073R

See website for more details and case studies.



Spares & Accessories

General Spares



Shower Drain Pump (SDS021T)



Tricuspid Valves X 10 (SDS211B)



Diaphragm/Valve Kit (SDS061T)

Accessories



Spare Pump Head Kit (SDS071T)



90mm Tray Gully (AK1695)



Marmox Tray Gully (SDA001T)

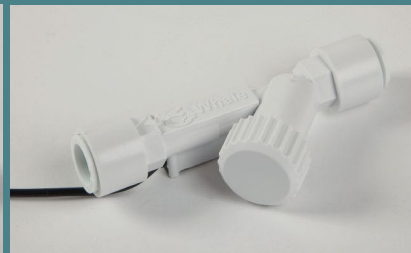
Switch Connect Spares



Switch Connect Transformer (SDS081T)



Mixer Valve Conversion Kit (AK1570)



Flow Switch (AK1568)

Instant Match Spares



Instant Match Transformer with Bluetooth Technology (SDS236T)



Instant Match transformer with wireless technology (SDS131T - 755.549)

Digital Smoothflow & Dry Deck Spares



Digital Smoothflow Control Box (SDS243T)



Dry-Deck Control Box (SDS273T)



Sika Flow Sensor (SDS263T)
(May also be used with the Instant Match and any electric shower)

Compatible Showers

For the showers listed below, hard wired connection is possible in place of a flow sensor (Instant Match) or flow switch (Switch Connect).

Triton Omnicare Design 8.5kw Electric Shower With Extended Kit	CINCDES08W
Triton Omnicare Design 9.5kw Electric Shower With Extended kit	CINCDES09W
Triton Omnicare Design 8.5kw Electric Shower With Grab Kit	CINCDES08WGRB
Triton Omnicare Design 9.5kw Electric Shower With Grab kit	CINCDES09WGRB
Triton Omnicare Style 8.5kw Electric Shower With Extended Kit	CINCSTY08W
Triton Omnicare Style 9.5kw Electric Shower With Extended Kit	CINCSTY09W
Triton Omnicare Style 8.5kw Electric Shower With Grab Kit	CINCSTY08WGRB
Triton Omnicare Style 9.5kw Electric Shower With Grab Kit	CINCSTY09WGRB
Triton T150+ 8.5kw Electric Shower	SP1508WP
Triton T150+ 9.5kw Electric Shower	SP1509WP
Triton Safeguard Pumped Care 8.5kw	CSGPE08WC
Triton Safeguard Pumped Care 9.5kw	CSGPE09WC
Triton Safeguard+ 8.5kw	CSGP08W
Triton Safeguard+ 9.5kw	CSGP09W



Mira advance Flex Extra

1.1785.005 (J09N)



Selectronic Premier Thermostatic Plus 8.5kW
Selectronic Premier Thermostatic Plus 9.5kW

RSELP85WPC
RSELP95WPC



Whale kit Approvals

- Whale® Shower Drain Kits are CE marked and complies with European standards for:
 - EMC (Electromagnetic Compatibility)
 - LVD (Low Voltage Directive)
- Pumps and Transformers are IP45 rated against moisture and particle ingress



INVESTORS IN PEOPLE

Proud to manufacture in the UK

Ref No: treehouse_180.611_v8_0321



Nationwide service network

Whale's nationwide team of certified service engineers ensures that wherever the installation, help is only a call away.



Technical Helpline

Whale's dedicated technical helpline is there to assist with specification requirements, installation advice or any questions you may have with regards to Whale® Healthcare products.

Whale
2 Enterprise Road, Bangor,
BT19 7TA, N. Ireland

drainagesupport@whalepumps.com
whalepumps.com/psd

Follow us on:



WhaleHealthcare



@WhalePumps



@WhaleCare



@Whalepumps

Technical Helpline: 0345 9090 912

Whale's policy is one of continuous improvement and we reserve the right to change specifications without prior notice.

Whale Copyright© 2022 All Rights Reserved.

Whale® and Whale Instant Match® are registered trademarks of Munster Simms Engineering Limited.

Mira®, is a registered trademark of Kohler Mira Limited.

Illustrations are for guidance purposes only.