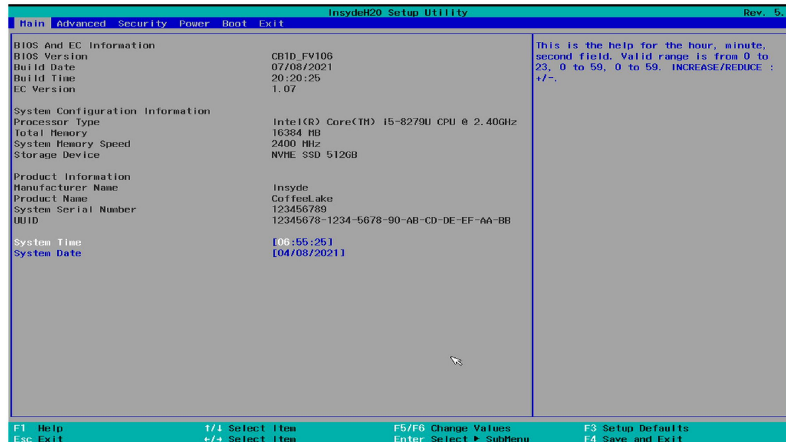
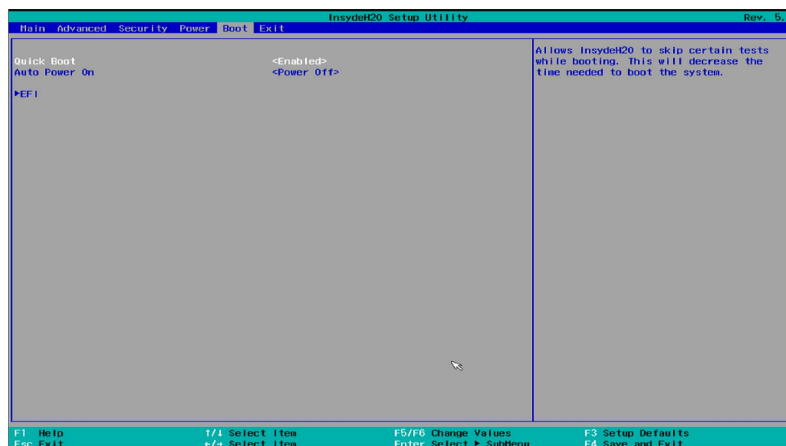


"Auto Power On" setup tutorial

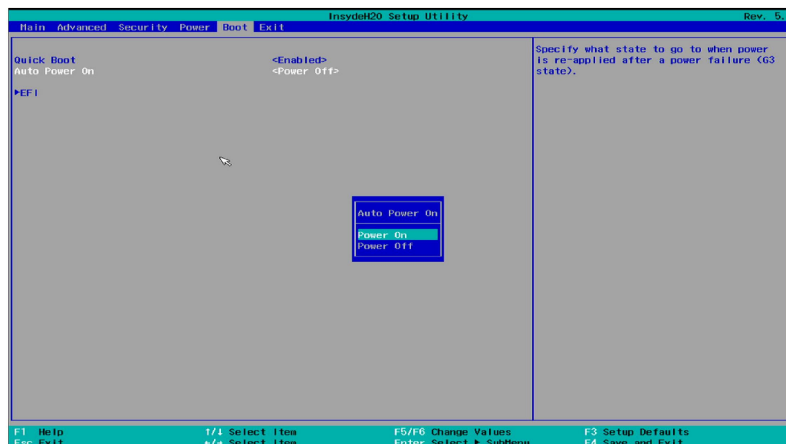
1. Turn on the machine and enter the BIOS by repeatedly pressing the “Delete” button.



2. Enter the “Boot” option.



3. After selecting “Auto Power On”, select “Power On” and type “Enter”.



4. Press F4 to save the settings, save the BIOS settings and enter the system for shutdown. After unplugging and plugging in the power supply again, test if you can achieve the function of automatic power on.