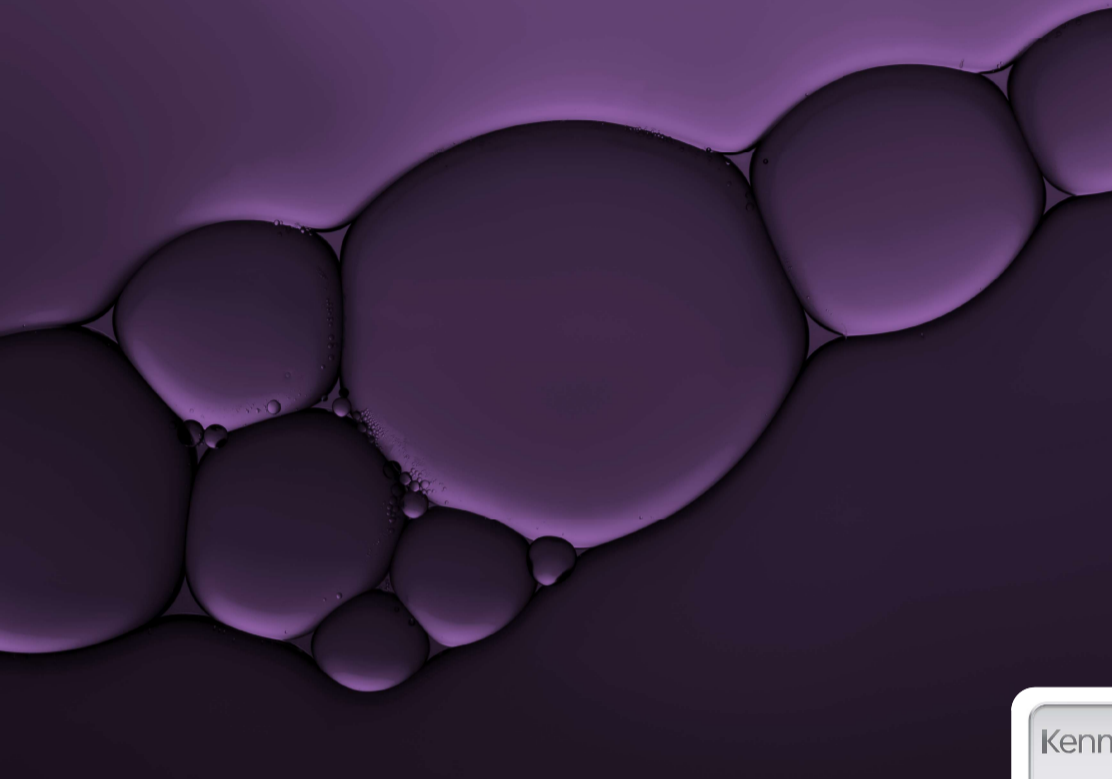


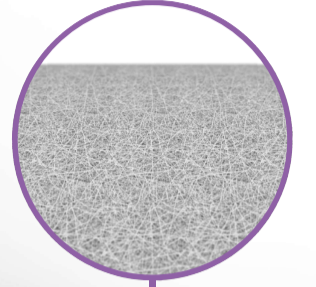


Particle Filter



SPECIFICATIONS

Function: **Mechanical Reduction**
Flow Rate: **0.79 gpm**
Passage Size: **10 microns**
Material: **Polypropylene**
Lifespan: **950 gal / 6 - 12 mo**



CONTAMINANTS

Greatly reduces sediments suspended in your water, including, but not limited to, rust, flakes, sand grains, clay particles, and some organic matter. While this list may seem insignificant, the **filter's ultimate purpose** is to increase the performance and lifespan of all preceding filters.



NANOFIBERS

Water is directed down, through the **rifled core**. Pressure then forces the water outward through the filter's **woven, nanofiber structure**. Large particulates remain trapped, preventing them from creating early blockages in the later stage filter(s) - effectively extending their lifespan.

