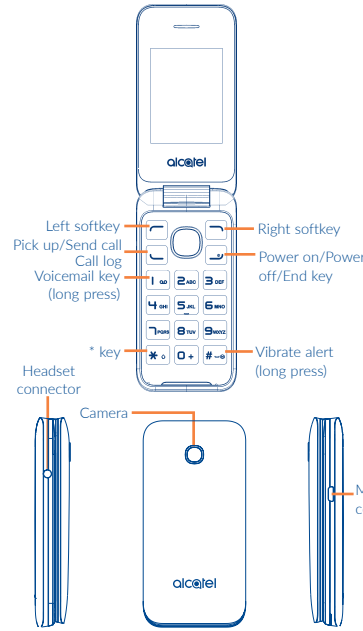


Quick Start Guide

1 Your mobile

This product meets applicable national SAR limits of 1.6 W/kg. The specific maximum SAR values can be found on page 24 of this user guide. When carrying the product or using it while worn on your body, either use an approved accessory such as a holster or otherwise maintain a distance of 10mm from the body to ensure compliance with RF exposure requirements. Note that the product may be transmitting even if you are not making a phone call.



1.1 Keys

- Navigation key**
 - Press to confirm an option
 - Press to go left/right/up/down
- Access main menu**
 - Pick up/Send a call
 - Press: Enter Call log
- Access contacts**
 - Press: End a call
 - Long press: Power on/off
 - Long press: Access your voicemail
- Return to the Home screen**
 - Long press: Power on/off
- From Idle screen**
 - Press: Enter 0
 - Long press: "0/+" and "0/+ /P/W" when in Dial screen.
- In Edit mode**
 - Press: Access symbols table
 - Long press: 0
- From Idle screen**
 - Press: *
 - In Edit mode:**
 - Press: Change input methods
- From Idle screen**
 - Press: #
 - Long press: Vibrate alert
 - In Edit mode**
 - Press: (space)

1.2 Status bar icons ⁽¹⁾

- In 2051A:**
- Battery charge level.**
 - Level of network reception.**
 - Missed calls.**
 - Call forwarding activated:** your calls will be forwarded.
 - SD card scanning completed.**
 - Roaming.**
 - Flight mode.**
 - GPRS connection status (Activated).**
 - Music activated.**
 - Radio is on.**
 - Headset connected.**
 - Alarm or appointments set.**
 - Receiving an MMS.**
 - Sending an MMS.**
 - SMS unread.**
 - MMS unread.**
- In 2051E:**
- Level of network reception.**
 - Call forwarding activated:** your calls will be forwarded.
 - GPRS connection status (Activated).**
 - Roaming.**

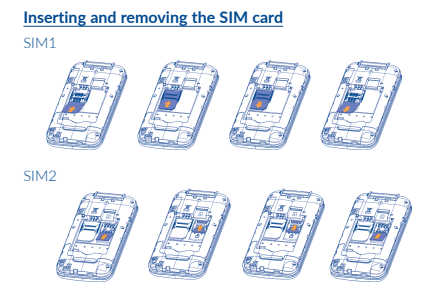
⁽¹⁾ The icons and illustrations in this guide are provided for information purposes only.

1.3 Home screen

- 1.3.1 Widget bar**
- Widgets are convenient shortcuts for quick access from the Home screen.
- You can customize widget bar by "Settings/Phone settings/Widget bar".
- 1.3.2 Change wallpaper**
- You can select a folder to choose one image as favorite wallpaper by selecting "Options/Set as /Wallpaper" in My files or open the picture in Image and press to choose Set as wallpaper.

2 Getting started.....

2.1 Set up



Place the SIM card with the chip facing downwards and slide it into its housing. Make sure that it is correctly inserted. To remove the card, press it and slide it out.

Charging the battery

Connect battery charger to your phone and plug into the socket.

- Charging may take about 20 minutes to start if the battery is out of power.
- Be careful not to force the plug into the socket.
- Make sure the battery is correctly inserted before connecting the charger.
- The mains socket must be near to the phone and easily accessible (avoid electric extension cables).
- You are advised to charge the battery to its maximum when using the phone for the first time (approximately 3 hours).
- To reduce power consumption and energy waste, when battery is fully charged, disconnect your charger from the plug; reduce the backlight time, etc.

2.2 Power on your phone

Hold down the key until the phone powers on.

3 Making a call.....

2.3 Power off your phone

Hold down the key from the Home screen.

Dial the desired number then press the key to place the call. If you make a mistake, you can delete the incorrect digits by pressing the right softkey.

To hang up the call, press the key.

Making an emergency call

If your phone is covered by the network, dial emergency number and press the key to make an emergency call. This works even without a SIM card and without typing the PIN code.

- 3.1 Calling your voicemail ⁽¹⁾**
- To access your voicemail, hold down the key.
- 3.2 Receiving a call**
- When you receive an incoming call, press the key to talk and then hang up by pressing the key.
- 3.3 Available functions during the call**
- During a call, you can access your contacts, call log, messages, etc. without hanging up the phone.

⁽¹⁾ 2051E only.
⁽²⁾ 2051A

⁽¹⁾ Contact your network operator to check service availability.

4 Messages

- 4.1 Create message**
- You can select "Messages/New chat" from the main menu or access from the widget bar and select icon to create text/multimedia message. You can type a message and you can also modify a predefined message in **Insert template** or customize your message by adding pictures, records, videos, etc (only available while editing a MMS). While writing a message, select "Options" to access all the messaging options.
- For dual SIM model, you can type a message and select to send it to a recipient in either the SIM1 or SIM2 directory ⁽¹⁾. One or more recipients can be added from contact list. Press "Contacts" through key to multi-select recipients from Contacts.
- 4.2 Create MMS**
- An SMS will be converted to MMS automatically when images, videos, audio, slides or attachments are inserted.
- An SMS message of more than a certain number of characters (the number of characters depends on your language) will be charged as several SMS. An MMS message containing photos and/or sounds may also be billed as more than one message. Specific letters (accent) will increase the size of the SMS, this may cause multiple SMS to be sent to your recipient.

⁽¹⁾ 2051E only.

5 Contacts.....

- 5.1 Consulting your contacts**
- To access the **contacts** from the Home screen, press the key and select the icon from the menu.
- For dual SIM model, the complete contacts of both SIM1 and SIM2 are available in this menu ⁽¹⁾.
- 5.2 Adding a contact**
- You can add a new contact to phone or SIM card by selecting "Add Contact".

6 Call log.....

- 6.1 Access**
- You can access the function using the following options:
- Select from main menu
 - Press the send key from main screen
 - For dual SIM model, the contacts of both SIM1 and SIM2 are available in this menu ⁽¹⁾.
- 6.2 Available options**
- When you press Options, you can have access to **Details, Call, Write message, Add to Contacts, Add to blacklist, Delete, Delete all, Call timers, GPRS counter.**

⁽¹⁾ 2051E only.

7 Games

Three games named **Ninja Up, Sky Gift** and **Danger Dash** were embedded in the phone, for more information refers to "Help" in the game.

8 Camera.....

- Your mobile phone is fitted with a camera for taking photos and shooting videos that you can use in different ways:
- store them in your "My files".
 - send them in a multimedia message (MMS) to a mobile phone.
 - send them directly by MMS.
 - customize your Home screen.
 - select them as contact icon to a contact in your **Contacts**.
 - transfer them by data cable or microSD card to your computer.

9 Media applications.....

- 9.1 Music.....**
- Access this feature from the main menu by selecting "Music". You will have full flexibility of managing music both on your mobile and memory card.
- Use this function to play audio files. Press to play/pause the audio player, short press or to last or next audio, in audio player interface, press up or down to tune volume.

9.2 Image.....

A library links to the images in "Image" in phone or SD card to multi-mark, set as wallpaper, set as contact icon, or sent by MMS.

9.3 Videos.....

Use this function to play video files. Press to play/pause the video, short press up or down to tune volume.

9.4 FM radio.....

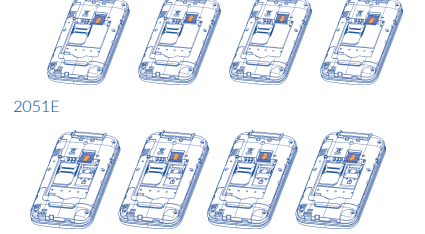
- Your phone is equipped with a radio ⁽¹⁾ with RDS ⁽²⁾ functionality. You can use the application as a traditional radio with saved channels or with parallel visual information related to the radio program on the display if you tune to stations that offer Visual Radio service. You can listen to it while running other applications.
- To use this feature you must plug in your headset, headset works as antenna when connected to your phone.

⁽¹⁾ The quality of the radio depends on the coverage of the radio station in that particular area.
⁽²⁾ Depending on your network operator and market.

11 My files.....

You will have access to all audio and visual files stored in **Phone** or **MemoryCard** in **My files**. You can access a number of items in **Phone** or **MemoryCard** with this option: **Alarm, Audio, Photos, Others, Video**, etc.

Inserting and removing the memory card:



Place the microSD card with the chip facing downwards and slide it into its housing. Make sure that it is correctly inserted. To remove the card, press and slide it out.

12 Alarm.....

Your mobile phone has a built-in alarm clock with snooze feature.

13 Calculator.....

Press the up, down, left, right on the navigation key to select +, -, x, ÷ and = respectively. Press the Right softkey to delete the figure.

14 Calendar.....

Once you enter this menu from the main menu, there is a monthly-view calendar for you to keep track of important meetings, appointments, etc. Days with events entered will be marked.

15 Notes.....

You can create a note in text format by accessing "Notes" from the main menu.

16 Convertor.....

When **weight** is selected, you can quickly check the difference between kg, pound and ounce values. When **length** is selected, you can convert between km-mile, m-yard, m-foot and cm-inch values..

17 Fake call.....

This program enables you to call yourself by simulating a caller number/name, ringtone at a scheduled time. It helps you to politely escape from social situations at any time you wish. This call can be rejected by key.

18 Call filter.....

Enable the blacklist, all callers in the list will be automatically blocked. Enable the whitelist, only callers in the list can be connected.

19 Wap.....

Access WAP options: Input URL, Bookmarks, History, Offline pages.

20 Profiles.....

With this menu, you may personalize ringtones for different events and environments.

21 Settings.....

From the main menu, select the menu icon and select the function of your choice in order to customize your telephone: **Phone settings, Call settings, Connections, Security, Restore factory settings ⁽¹⁾, Main SIM settings ⁽²⁾.**

⁽¹⁾ Make the phone's settings recover to its default value. End-user data will be erased. Enter its default password 0000 to confirm to restore and reboot.
⁽²⁾ 2051E only.

22 Services.....

STK service is the tool kit of SIM card. This phone supports the service function. The specific items depend on SIM card and network. Service menu will be automatically added to the phone menu when supported by network and SIM card. Contact your network operator first to check service availability.

23 Input mode.....

This mode allows you to type a text by choosing a letter or a sequence of characters associated with a key. Press the key several times until the desired letter is highlighted. When you release the key the highlight character is inserted into the text.

