

A man in a light blue shirt is seen from the side, holding a tablet. He is in a factory environment with industrial machinery in the background. Overlaid on the image are various digital graphics: a '24/7' icon with a circular arrow, a 'NEWS' section with a profile icon, a 'Home' button, and a network diagram with three nodes. The overall theme is industrial digitalization.

SIEMENS

Ingenuity for life

Exemplary Connection of a FANUC controller with MindSphere

Analyze MyPerformance /OEE-Tuning 01.03.00.00
Analyze MyPerformance /OEE-Monitor 01.03.00.00



Legal information

Use of application examples

Application examples illustrate the solution of automation tasks through an interaction of several components in the form of text, graphics and/or software modules. The application examples are a free service by Siemens AG and/or a subsidiary of Siemens AG ("Siemens"). They are non-binding and make no claim to completeness or functionality regarding configuration and equipment. The application examples merely offer help with typical tasks; they do not constitute customer-specific solutions. You yourself are responsible for the proper and safe operation of the products in accordance with applicable regulations and must also check the function of the respective application example and customize it for your system.

Siemens grants you the non-exclusive, non-sublicensable and non-transferable right to have the application examples used by technically trained personnel. Any change to the application examples is your responsibility. Sharing the application examples with third parties or copying the application examples or excerpts thereof is permitted only in combination with your own products. The application examples are not required to undergo the customary tests and quality inspections of a chargeable product; they may have functional and performance defects as well as errors. It is your responsibility to use them in such a manner that any malfunctions that may occur do not result in property damage or injury to persons.

Disclaimer of liability

Siemens shall not assume any liability, for any legal reason whatsoever, including, without limitation, liability for the usability, availability, completeness and freedom from defects of the application examples as well as for related information, configuration and performance data and any damage caused thereby. This shall not apply in cases of mandatory liability, for example under the German Product Liability Act, or in cases of intent, gross negligence, or culpable loss of life, bodily injury or damage to health, non-compliance with a guarantee, fraudulent non-disclosure of a defect, or culpable breach of material contractual obligations. Claims for damages arising from a breach of material contractual obligations shall however be limited to the foreseeable damage typical of the type of agreement, unless liability arises from intent or gross negligence or is based on loss of life, bodily injury or damage to health. The foregoing provisions do not imply any change in the burden of proof to your detriment. You shall indemnify Siemens against existing or future claims of third parties in this connection except where Siemens is mandatorily liable.

By using the application examples you acknowledge that Siemens cannot be held liable for any damage beyond the liability provisions described.

Other information

Siemens reserves the right to make changes to the application examples at any time without notice. In case of discrepancies between the suggestions in the application examples and other Siemens publications such as catalogs, the content of the other documentation shall have precedence.

The Siemens terms of use (<https://support.industry.siemens.com>) shall also apply.

Security information

Siemens provides products and solutions with Industrial Security functions that support the secure operation of plants, systems, machines and networks.

In order to protect plants, systems, machines and networks against cyber threats, it is necessary to implement – and continuously maintain – a holistic, state-of-the-art industrial security concept. Siemens' products and solutions constitute one element of such a concept.

Customers are responsible for preventing unauthorized access to their plants, systems, machines and networks. Such systems, machines and components should only be connected to an enterprise network or the Internet if and to the extent such a connection is necessary and only when appropriate security measures (e.g. firewalls and/or network segmentation) are in place. For additional information on industrial security measures that may be implemented, please visit <https://www.siemens.com/industrialsecurity>.

Siemens' products and solutions undergo continuous development to make them more secure. Siemens strongly recommends that product updates are applied as soon as they are available and that the latest product versions are used. Use of product versions that are no longer supported, and failure to apply the latest updates may increase customer's exposure to cyber threats.

To stay informed about product updates, subscribe to the Siemens Industrial Security RSS Feed at: <https://www.siemens.com/industrialsecurity>.

Table of contents

Legal information	3
1 Introduction	5
1.1 Overview	5
1.2 Mode of operation	5
1.3 Components used	5
2 Engineering	6
2.1 Configuration/Setting Parameters	6
2.1.1 FANUC commissioning	6
2.1.2 Installing the SINUMERIK Integrate client	6
2.1.3 Installing FanucModule	17
2.1.4 Integrating the FanucModule into the SINUMERIK Integrate client	22
2.1.5 Configuring FanucModule and MindSphere.....	23
2.1.6 Configuring MindSphere.....	24
2.1.7 Configuring data acquisition	31
2.2 Operation	47
2.2.1 Activating the data acquisition	47
2.2.2 Uninstall procedure	49
3 Appendix	50
3.1 Service and support	50
3.2 Application support.....	51
3.3 Links and literature	51
3.4 Change documentation	51

1 Introduction

1.1 Overview

1.2 Mode of operation

1.3 Components used

This application example has been created with the following hardware and software components:

Operating system Windows 10 with up-to date Windows patches
SINUMERIK Integrate Client 4.12.0.21 or 4.13.0.36, SINUMERIK Integrate Client 4.15 HF2
3rdPartyController 1.0.2.2
NET Framework as of 4.x

Analyze MyPerformance /OEE-Tuning or OEE-Monitor 01.03.00.00
Manage MyMachines 02.02.00.00

Note: for older operating systems an older version of 3rdPartyController needs to be used, also additionally MicrosoftEasyFix51044 must be installed so that TLS 1.2 functions are available on old systems

2 Engineering

2.1 Configuration/Setting Parameters

2.1.1 FANUC commissioning

Overview

In order to use Manage MyMachines with FANUC control systems, you must carry out the following installations and configurations:

1. Installing SINUMERIK Integrate Client, see Chapter: Installing the SINUMERIK Integrate client
2. Installing FanucModule, see Chapter: Installing FanucModule
3. Integrating FanucModule in SINUMERIK Integrate, see Chapter: Integrating the FanucModule into the SINUMERIK Integrate client
4. Configuring FanucModule and MindSphere, see Chapter: Configuring FanucModule and MindSphere

If you no longer wish to use the "FanucModule", you can uninstall the software.
See Chapter: 6. Uninstalling FanucModule

2.1.2 Installing the SINUMERIK Integrate client

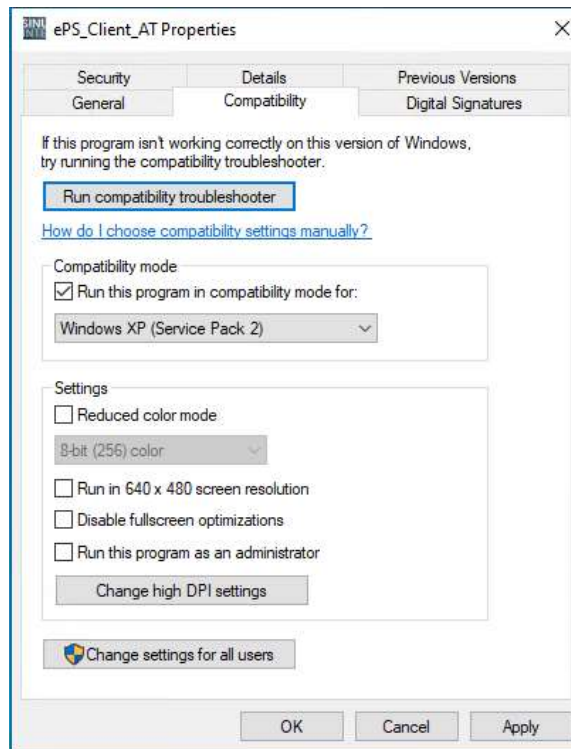
Procedure

1. Start the SINUMERIK control system in Windows service mode.
2. Open the installation directory.
3. Start the "setup.exe" setup file by double-clicking.

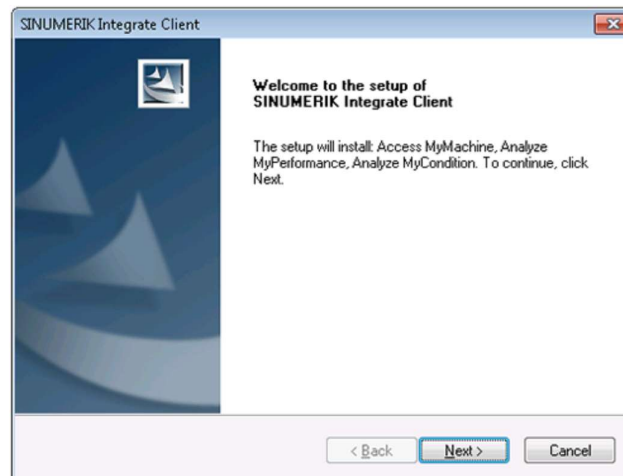
If you have not installed the appropriate Internet Explorer, a message will appear indicating this, e.g. "The program requires Internet Explorer 6 or higher". Installation is canceled and you must install the appropriate Internet Explorer first. Then restart the client installation.

Installation on Windows 10:

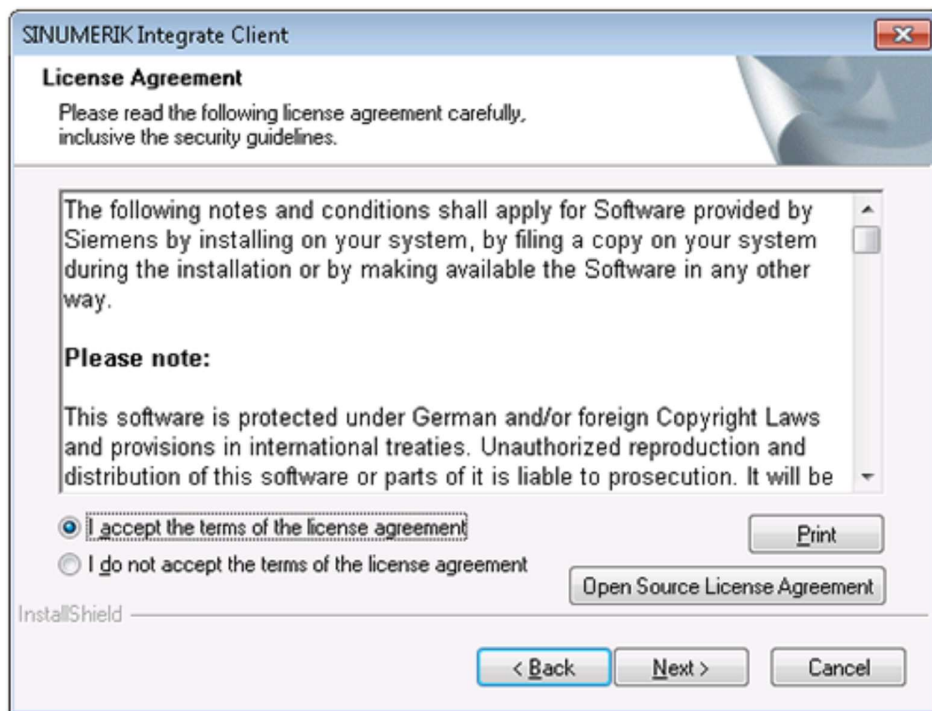
If you want to install SINUMERIK Integrate Client, you need to run installation in Compatibility Mode. To do that, right click on installer file and choose "Properties". Mark checkbox "Run this program in compatibility mode" and choose "Windows XP" option. Click "OK" and run setup file.



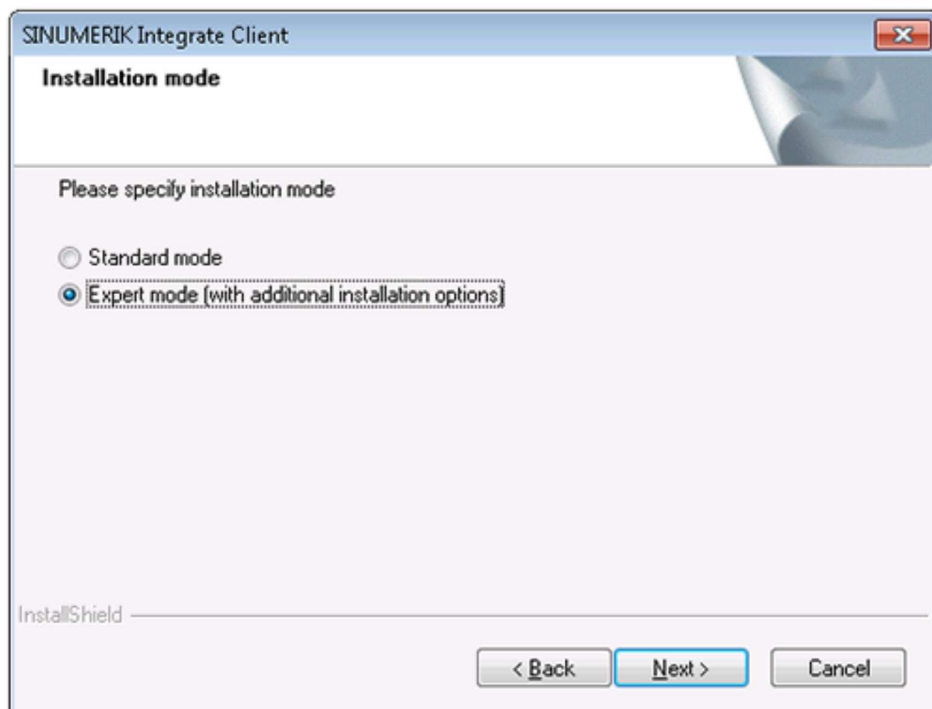
4. The welcome dialog box opens. The installation language is English. Click "Next >" to start the installation.



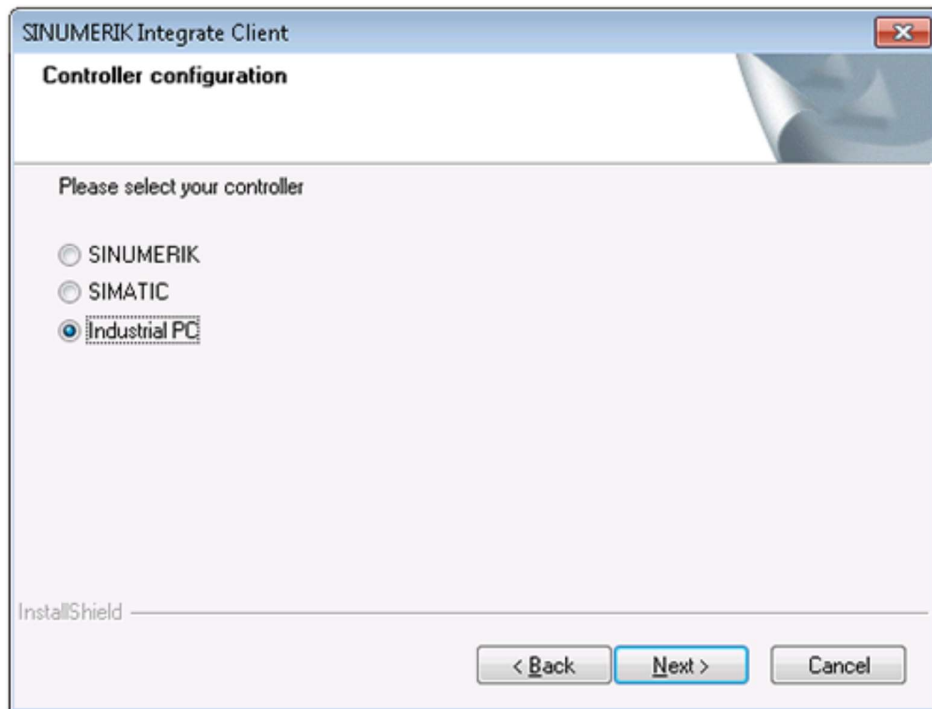
5. The "License Agreement" window opens. Read the license agreement.
- Click "Print" if you want to print out the terms.
 - Then activate the "I accept the terms of the license agreement" checkbox and click "Next >".
- OR -
- Click "< Back" to return to the previous window.



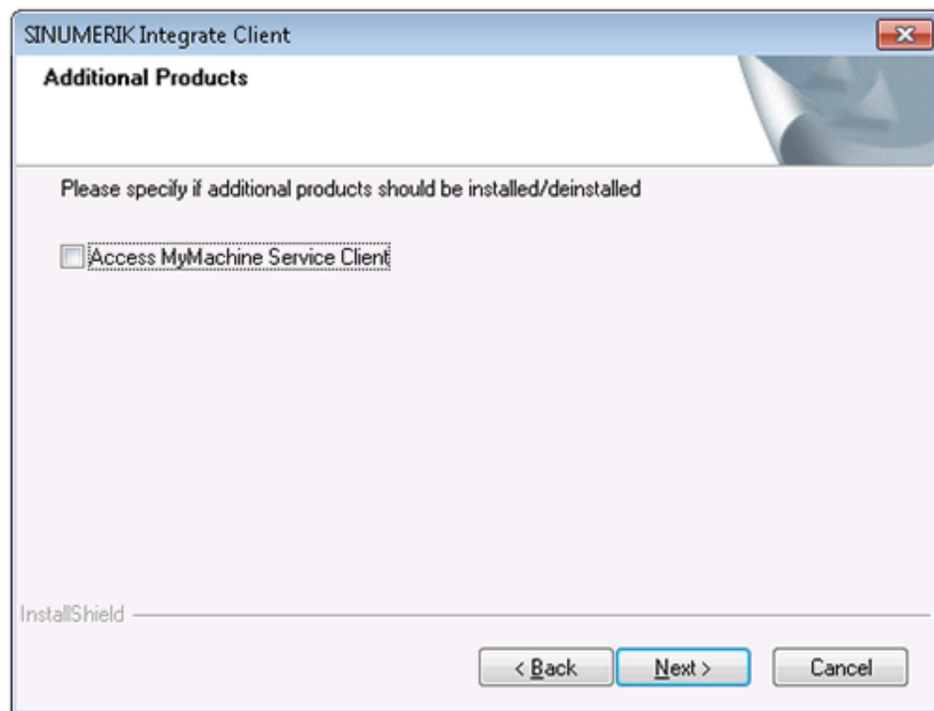
6. The "Installation mode" window opens.
- Select the "Expert mode (with additional installation options)" checkbox.
 - Click "Next >".



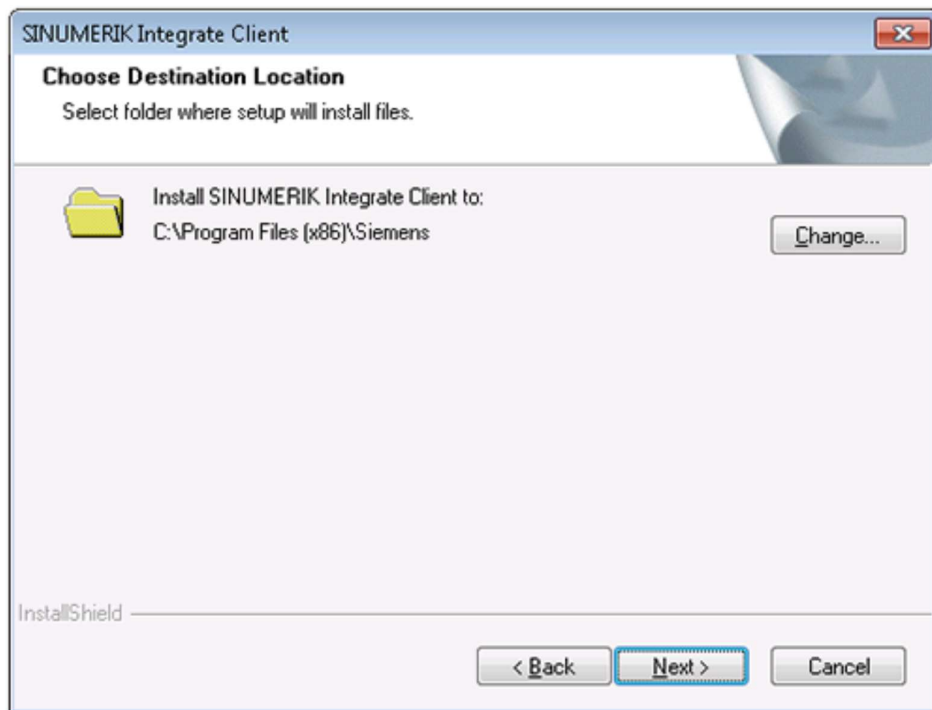
7. The "Controller configuration" window opens.
 - Activate the "Industrial PC" checkbox.
 - Click "Next >".



8. The "Additional Products" window opens.
 - Click "Next >".



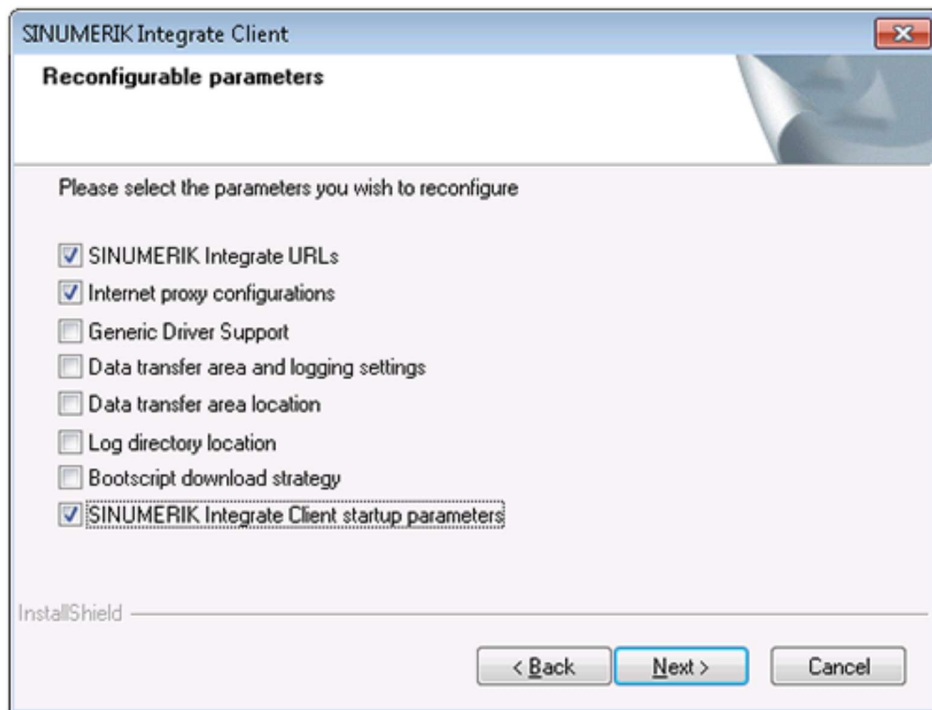
9. The "Choose Destination Location" window opens and the installation directory is displayed.
- Click "Next >".
 - OR -
 - Click "Change..." to change the directory.



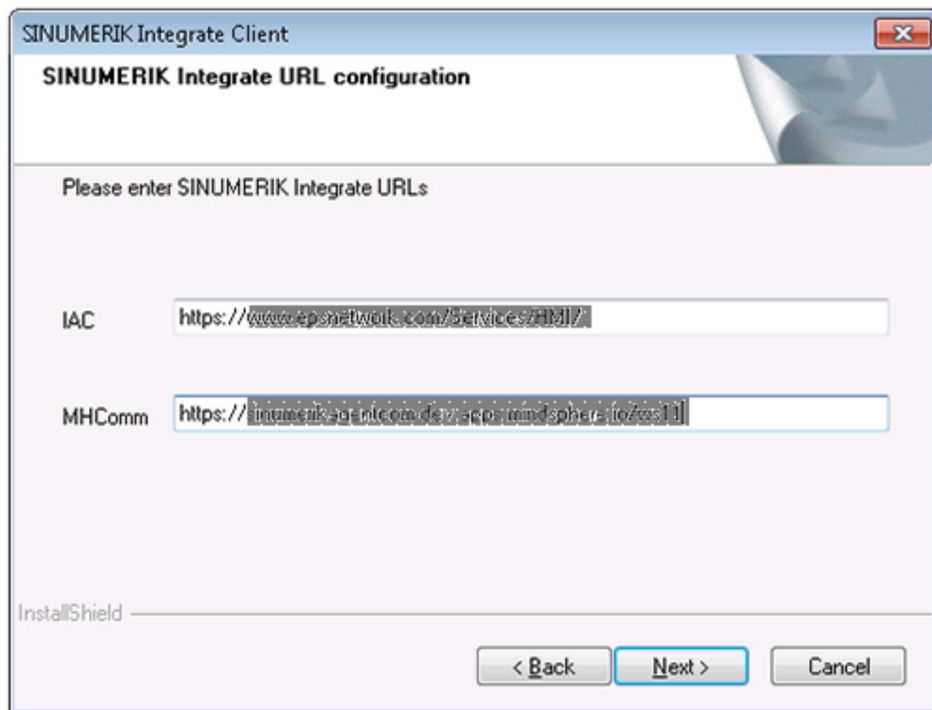
10. The "Reconfigurable parameters" window opens.

Activate the checkbox:

- "SINUMERIK Integrate URLs"
- "Internet proxy configurations"
- "SINUMERIK Integrate Client startup parameters"
- Click "Next >".



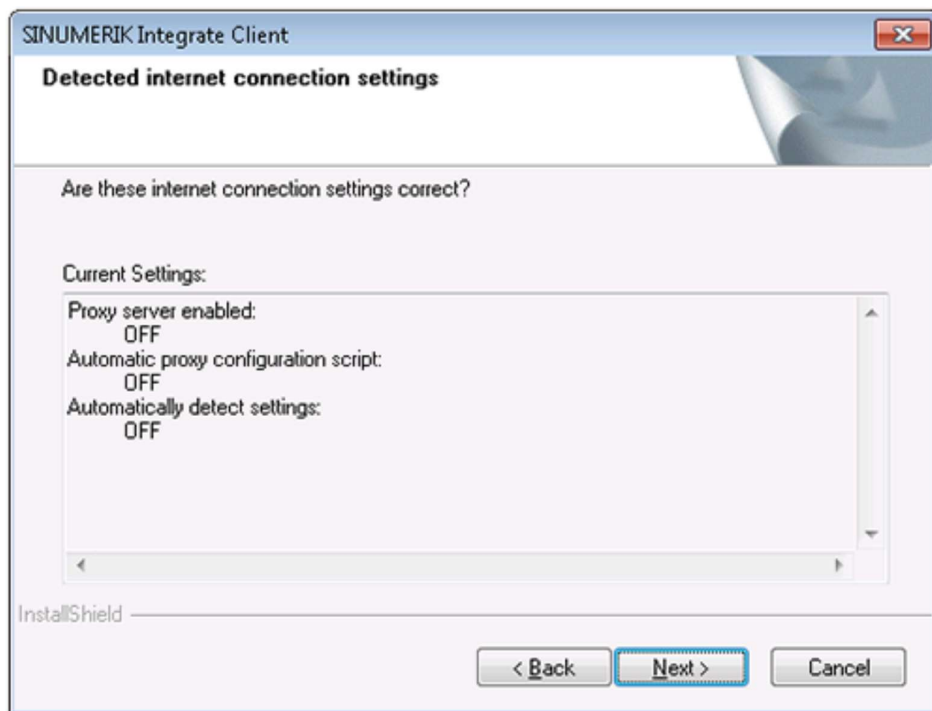
11. The "SINUMERIK Integrate URL configuration" window opens.
The proxy server is required to connect the control to MindSphere.
Enter the following Webservice URL:
- MindSphere V3 Livesystem:
<https://gateway.eu1.mindsphere.io/api/agentcommmmops/v3/ws11>
 - Click "Next >".



12. The following message is displayed.
Click "OK" to adapt the proxy server.

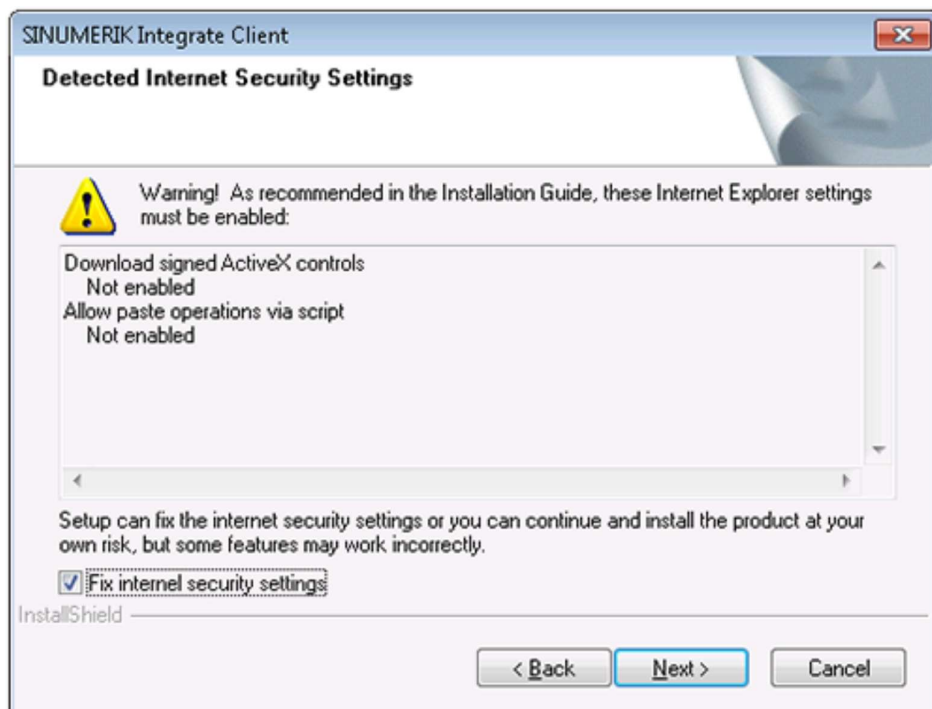


13. The "Detected internet connection settings" window is displayed.
Click "Next >".



14. The "Detected Internet Security Settings" window is displayed.

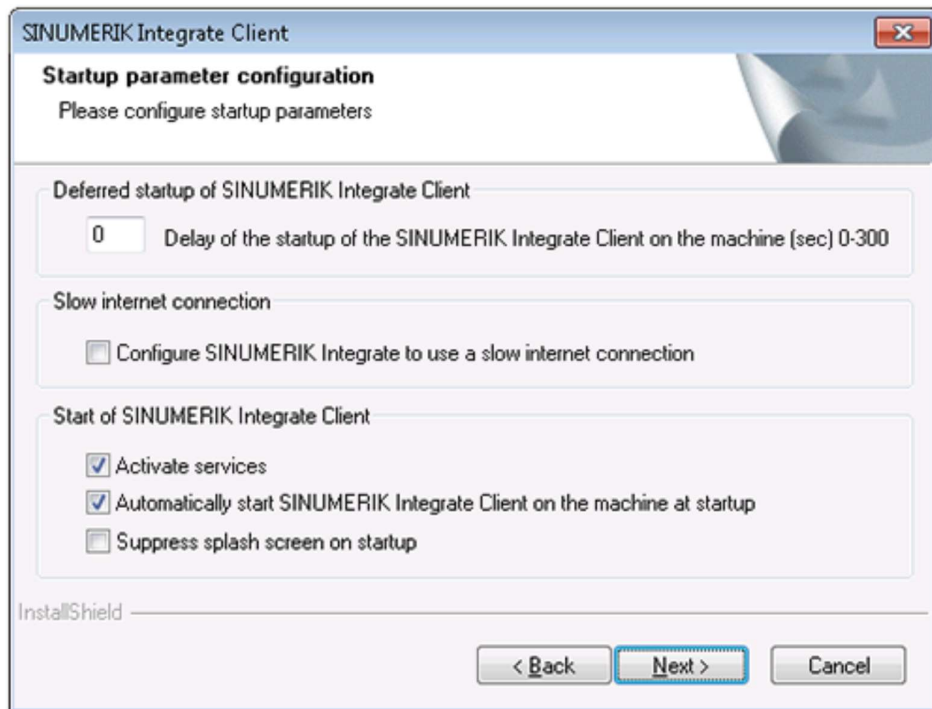
- Activate the "Fix internal security settings" checkbox.
- Click "Next >".



15. The "Startup parameter configuration" window opens.

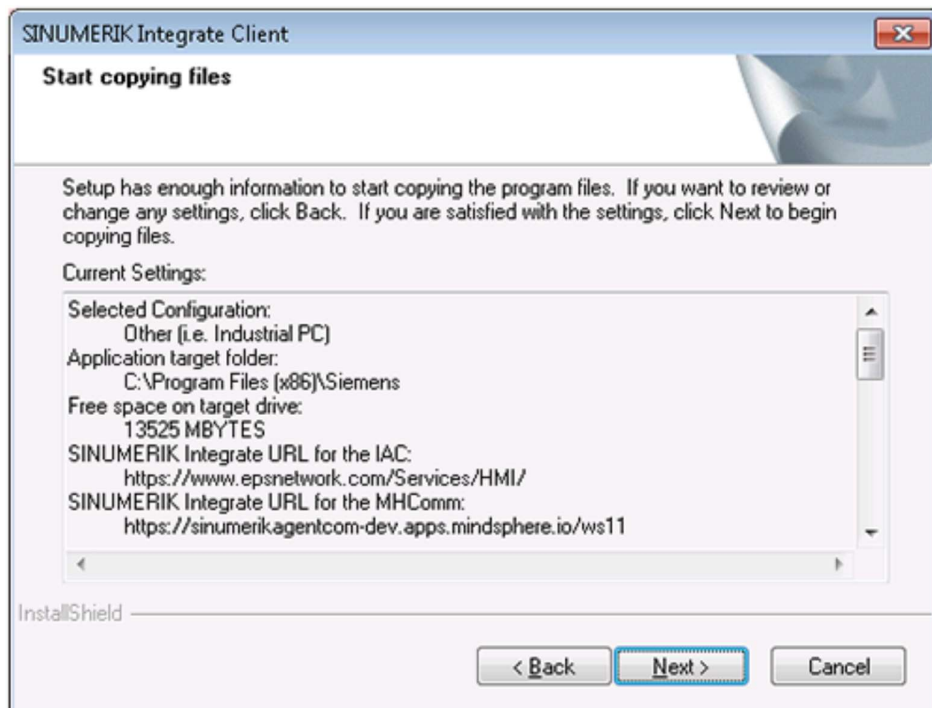
Under "Start of SINUMERIK Integrate Client", activate the checkbox:

- "Activate services"
- "Automatically start SINUMERIK Integrate Client on the machine at startup"
- Click "Next >".

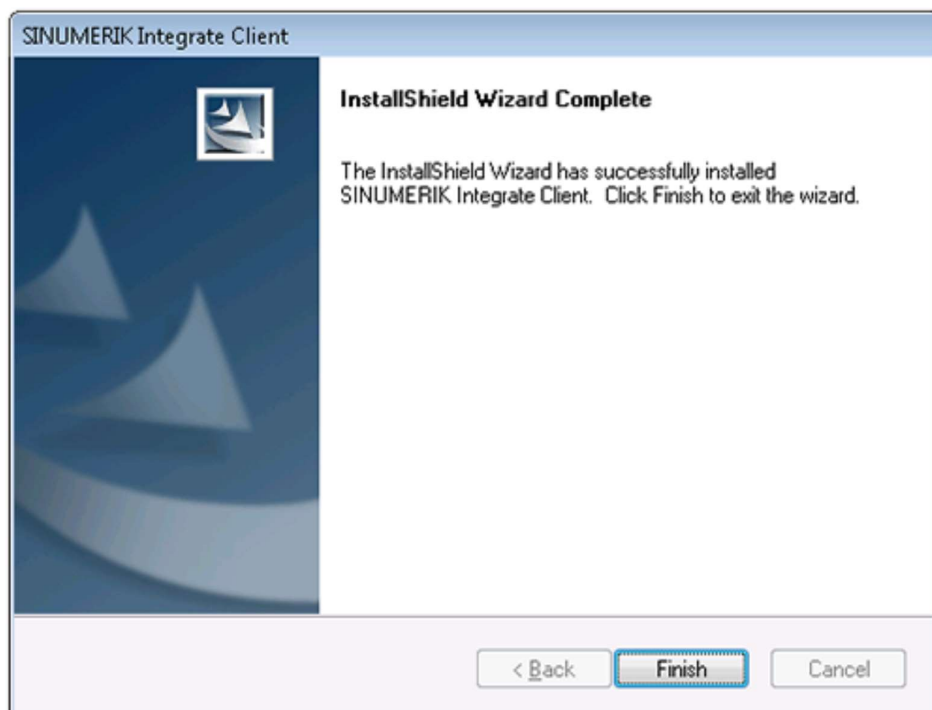


16. The "Start copying files" window opens, and the settings made are displayed.

- Click "Next >" to copy the data to the IPC.

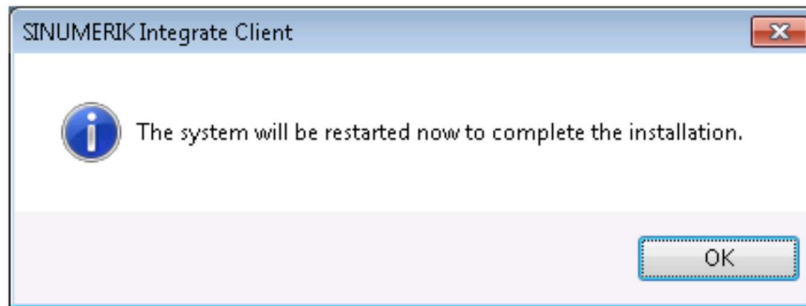


17. The "InstallShield Wizard Complete" window opens.
Click "Finish".



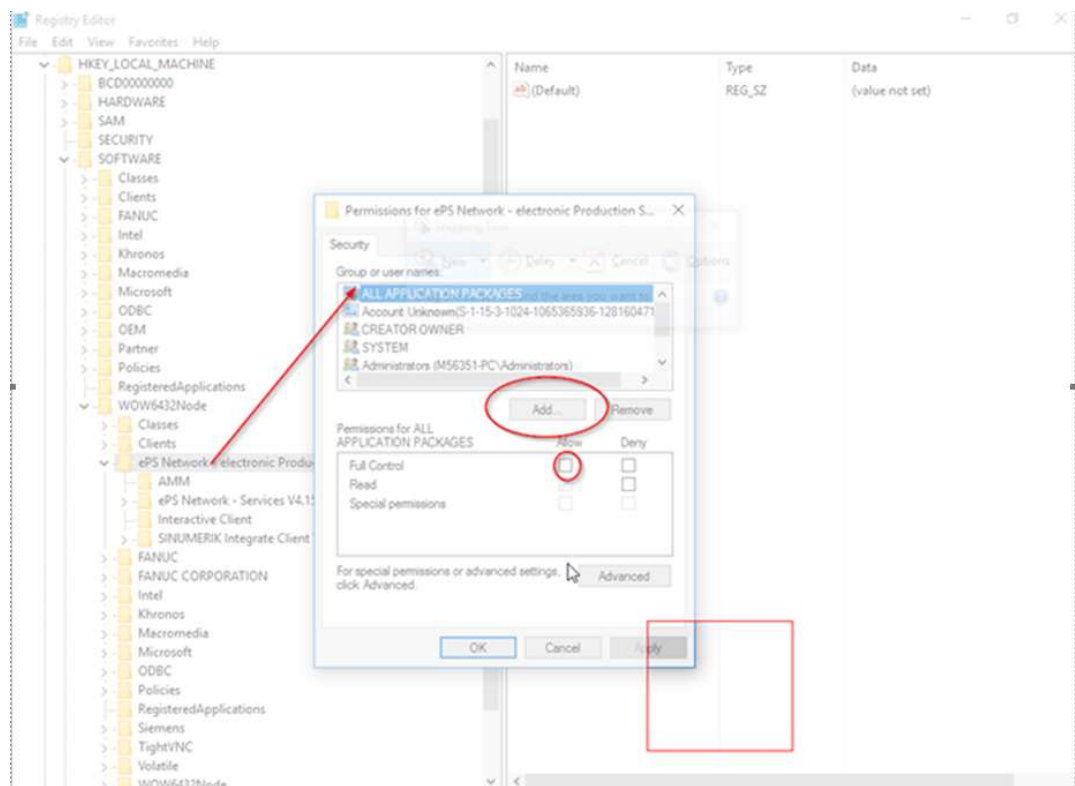
18. You see a message to execute a restart.

To do this, click "OK".



Access rights for the logged in user have to be changed accordingly:

Run regedit.exe and change the key HKLM\Software\WoW6432Node\lePS as follows



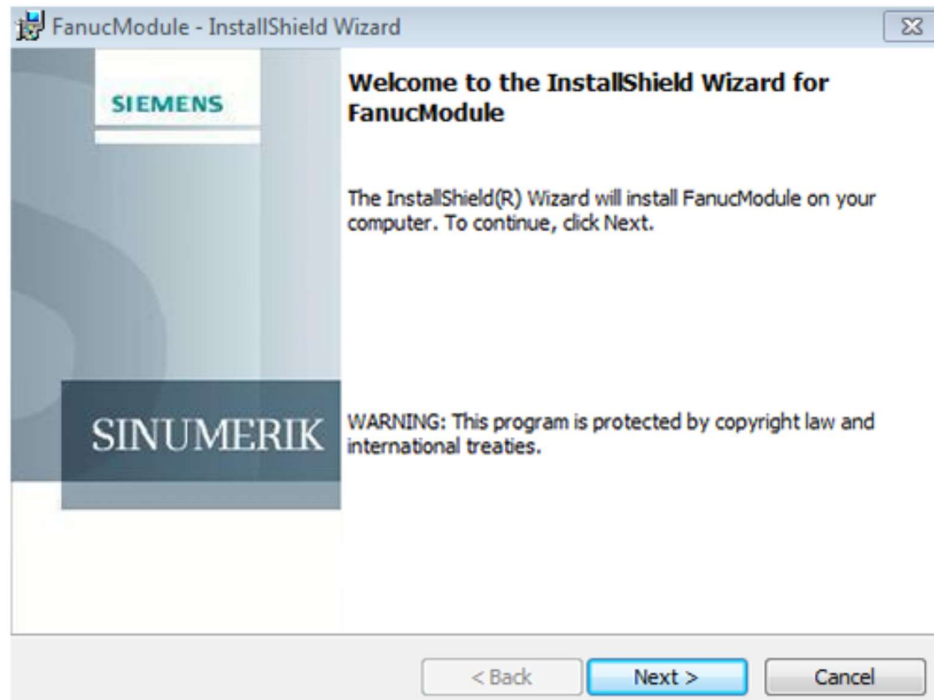
2.1.3 Installing FanucModule

Procedure

1. Open the installation directory on the computer.
 2. Double-click to run the "FanucModuleSetup.exe" setup file.
- The welcome dialog box "FanucModule - InstallShield Wizard" is opened.

English is the installation language.

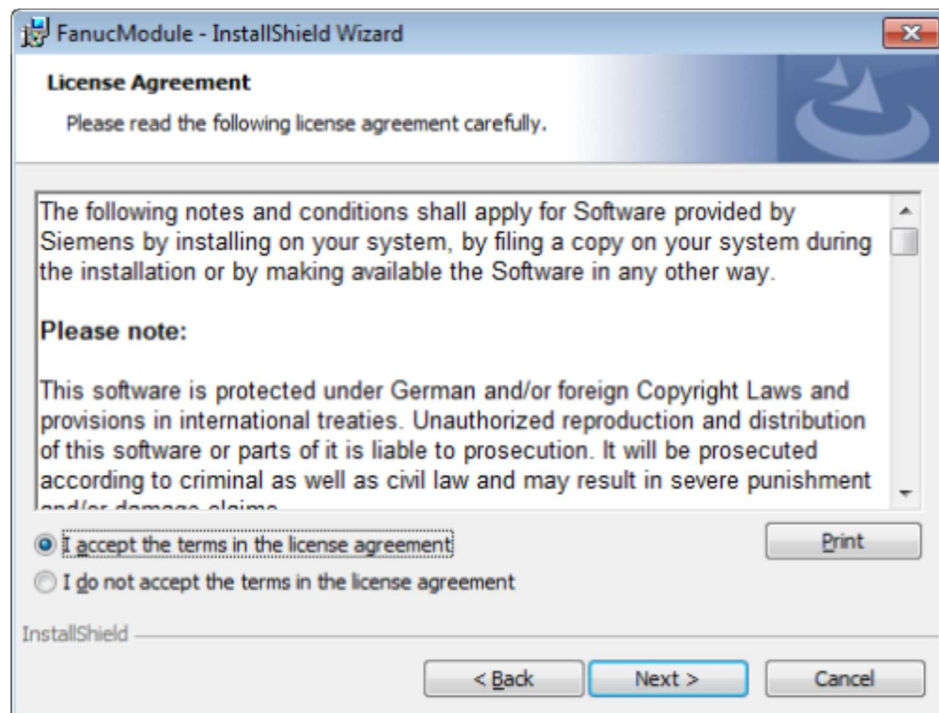
Click "Next >".



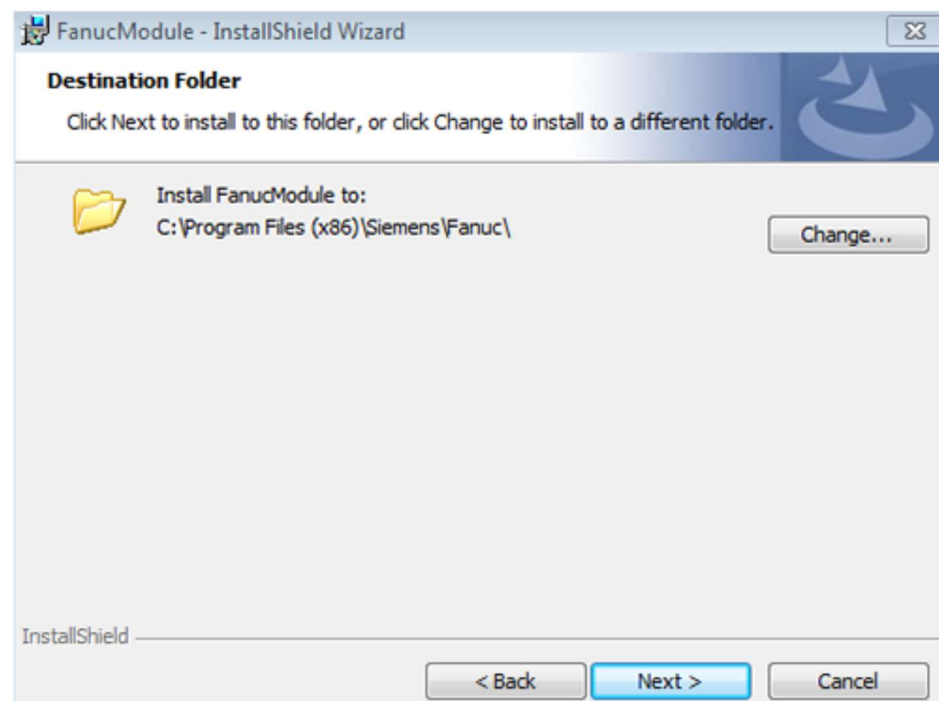
3. The "License Agreement" window opens.

Read the license agreement.

- Click "Print" if you want to print out the terms.
- Then activate the "I accept the terms in the license agreement" checkbox and click "Next >".
- Click "< Back" to return to the previous window.

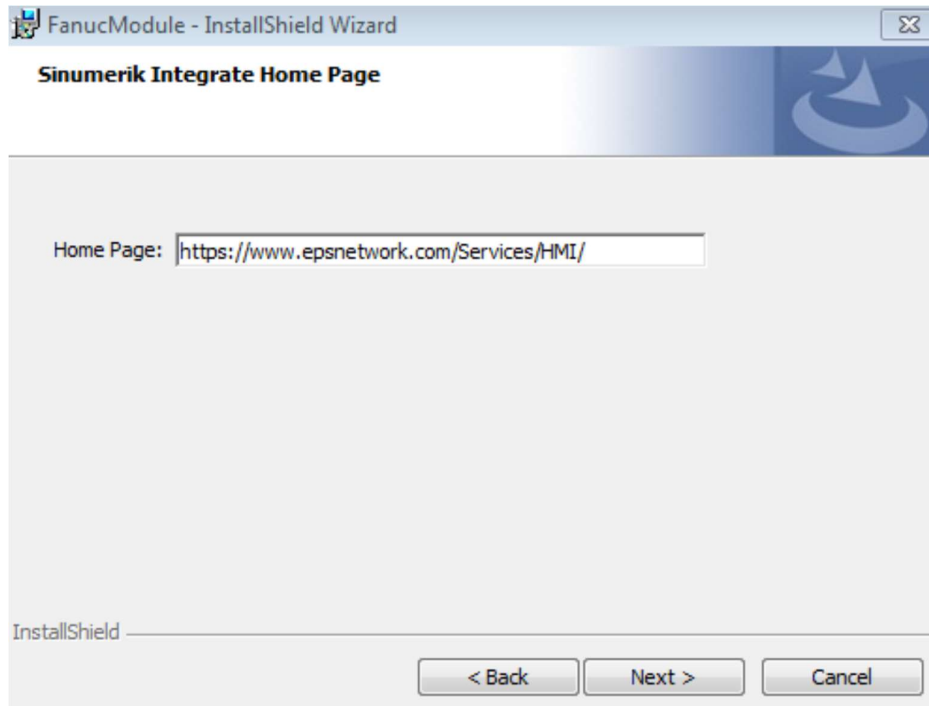


4. The "Destination Folder" window opens.
Open the specified installation directory and click "Next >".



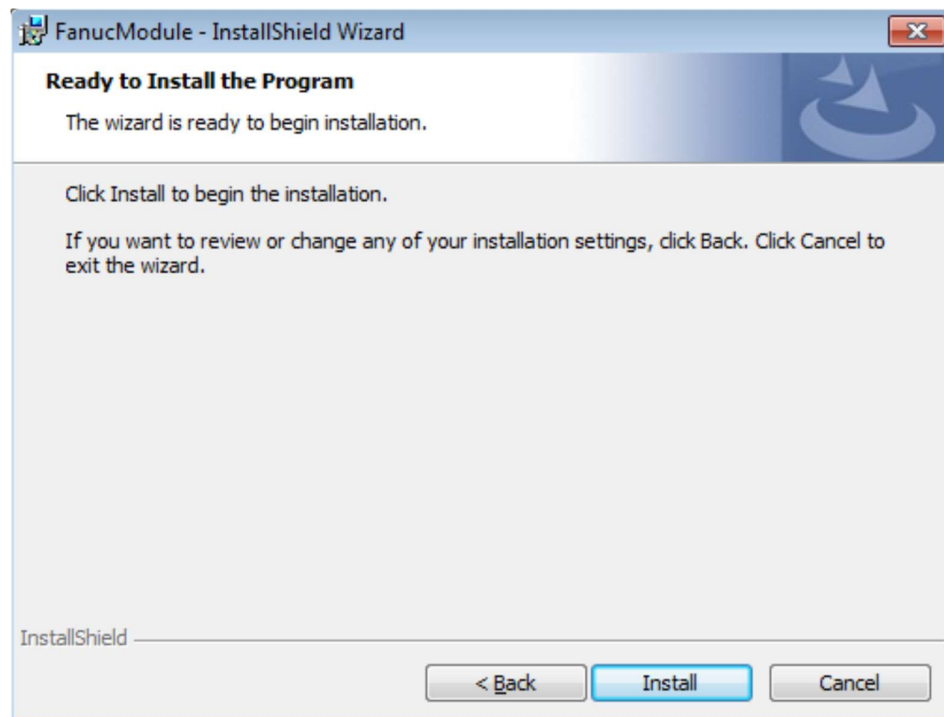
5. The "SINUMERIK Integrate Home Page" window opens and shows the link to the home page.

Click "Next >".

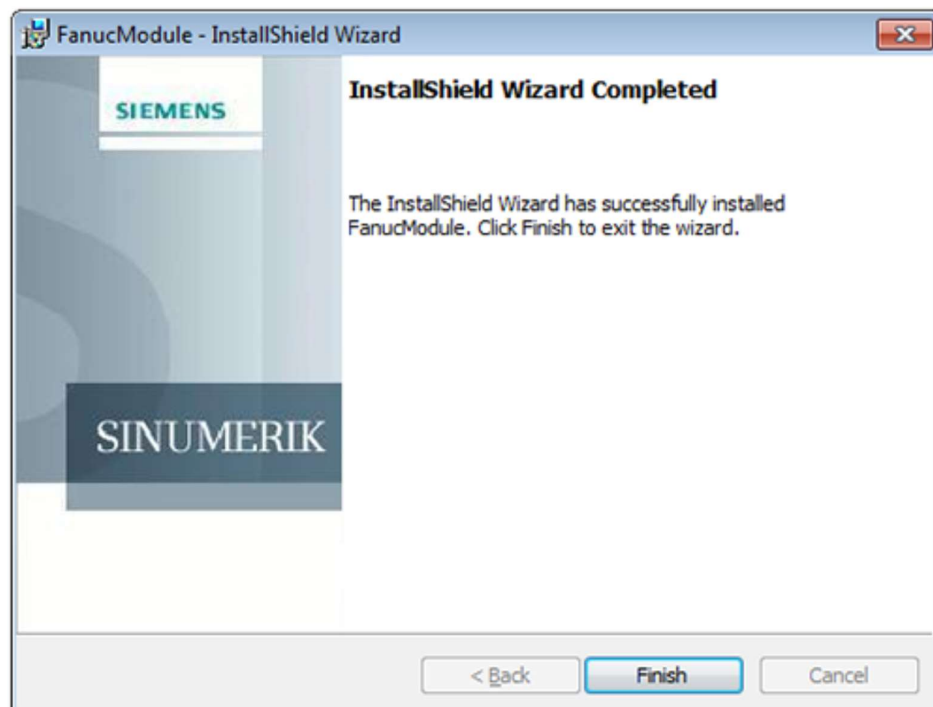


6. The preparations are complete, and the "Ready to Install the Program" window opens.

Click "Install" to start the installation.

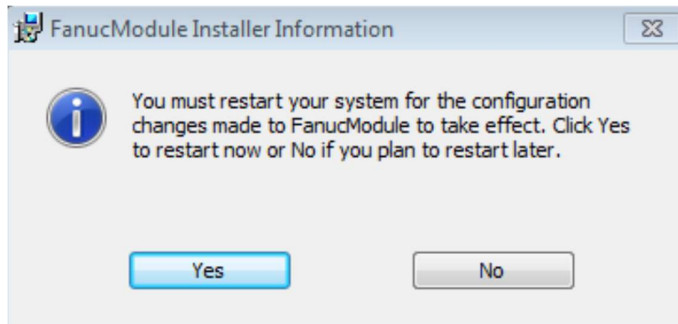


7. You see the successfully completed installation.
Click "Finish".



8. A dialog window with the prompt to restart the system opens.

- Click "No" to configure the client before the restart.
- Click "Yes" to restart the system and therefore activate the configuration.



2.1.4 Integrating the FanucModule into the SINUMERIK Integrate client

To integrate "FanucModule", you must manually adapt the configuration file of the client "settings.ini".

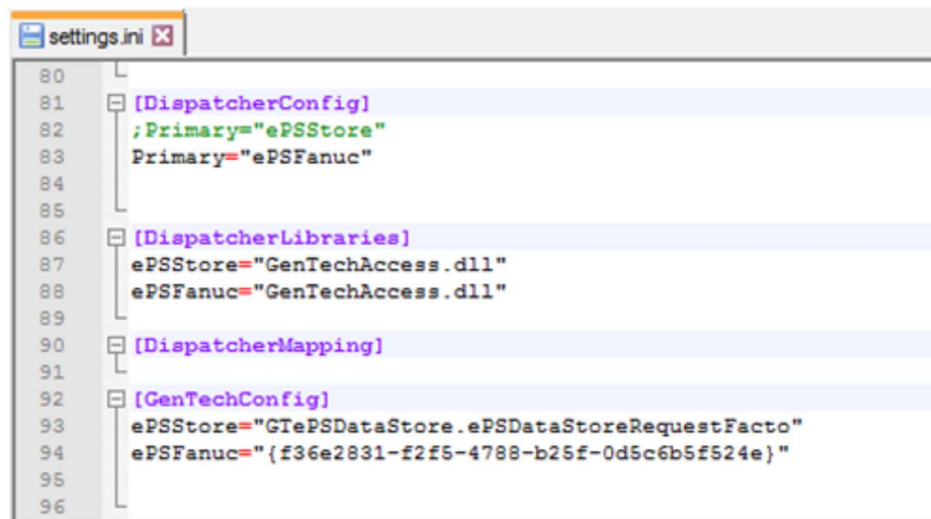
If the client was installed in the standard directory, then the ini file is located in the following directory:

C:\Program Files(x86)\Siemens\MH\settings.ini

Procedure

1. Open the file with any editor.
2. Search for the [DispatcherConfig], [DispatcherLibraries] and [GenTechConfig] areas.
3. Change these areas as follows:

```
[DispatcherConfig]
;Primary="ePSStore"
Primary="ePSFanuc"
[DispatcherLibraries]
ePSStore="GenTechAccess.dll"
ePSFanuc="GenTechAccess.dll"
[DispatcherMapping]
[GenTechConfig]
ePSStore="GTePSDataStore.ePSDataStoreRequestFacto"
ePSFanuc="{f36e2831-f2f5-4788-b25f-0d5c6b5f524e}"
```

```

80
81 [DispatcherConfig]
82 ;Primary="ePSStore"
83 Primary="ePSFanuc"
84
85
86 [DispatcherLibraries]
87 ePSStore="GenTechAccess.dll"
88 ePSFanuc="GenTechAccess.dll"
89
90 [DispatcherMapping]
91
92 [GenTechConfig]
93 ePSStore="GTePSDataStore.ePSDataStoreRequestFacto"
94 ePSFanuc="{f36e2831-f2f5-4788-b25f-0d5c6b5f524e}"
95
96

```

4. Save your changes and restart the computer to activate the changes.

2.1.5 Configuring FanucModule and MindSphere

Requirement

Carry out a restart to configure the IP address of the machine to be connected in the "FanucModule".

Configuring FanucModule – connection to the machine

1. Right click on the "FanucConfig" icon in the info area of the task bar "system tray". Select "Open Configuration".



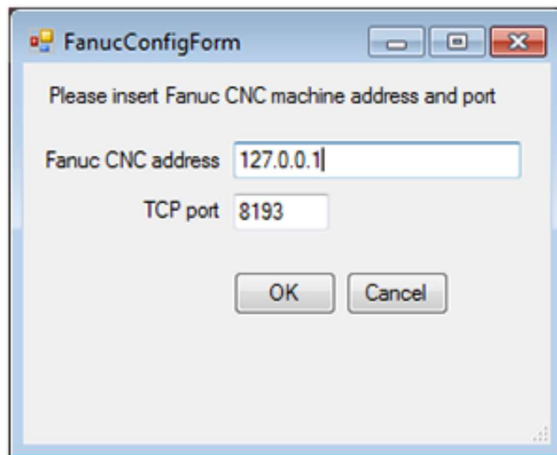
2. Enter the IP address of the FANUC controller, e.g.

- Fanuc CNC address: 127.0.0.1

- Do not change the TCP port.

Click "OK".

The configuration has been activated, and the FanucModule is ready to acquire data.



2.1.6 Configuring MindSphere

Onboarding

To acquire data from a FANUC control, create a "Basic Device" type asset in the MindSphere Asset Manager and carry out "onboarding" like it is shown in the following chapters.

Opening the Asset Manager

1. Click on the "MindSphere Asset Manager" icon.



2. The "Asset Manager" window opens.

2.1.6.1 Creating an asset type

Note

Dedicated Asset Types

Although it is theoretically possible to use a created asset type for more than one machine, it is recommended to use a dedicated asset type for each machine in

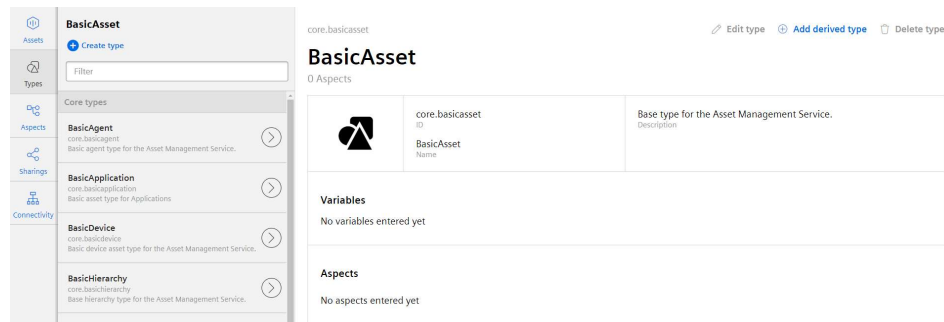
order to make the asset type customizable for every machine (e.g. with an individual picture).

Open the "Asset Manager" window as described in chapter "Configuring MindSphere"

For further Information on the Asset Manager check the Asset Manager documentation.

Procedure

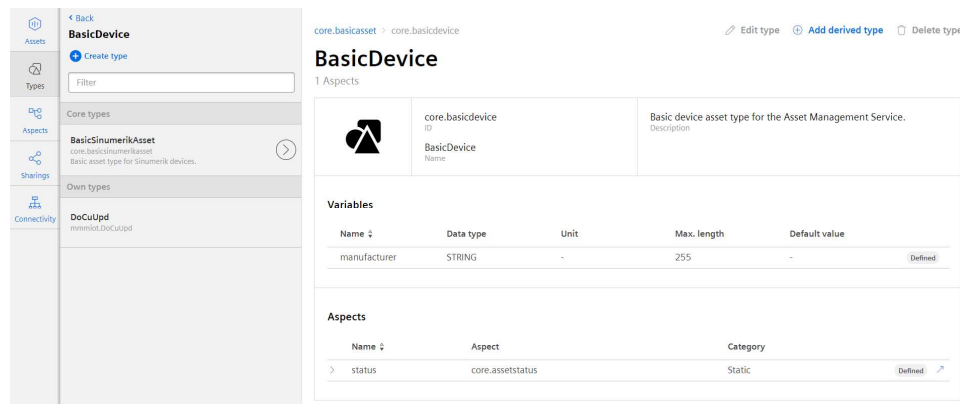
1. In the left windowpane, click the "Types" button.
2. The "BasicAsset" window opens.



3. In the center windowpane, select "BasicDevice" and click the small grey arrow (navigate to children).

The "BasicDevice" window opens.

4. In the center windowpane, click "+ Create type" to create a new asset type.



The "Create type" window open

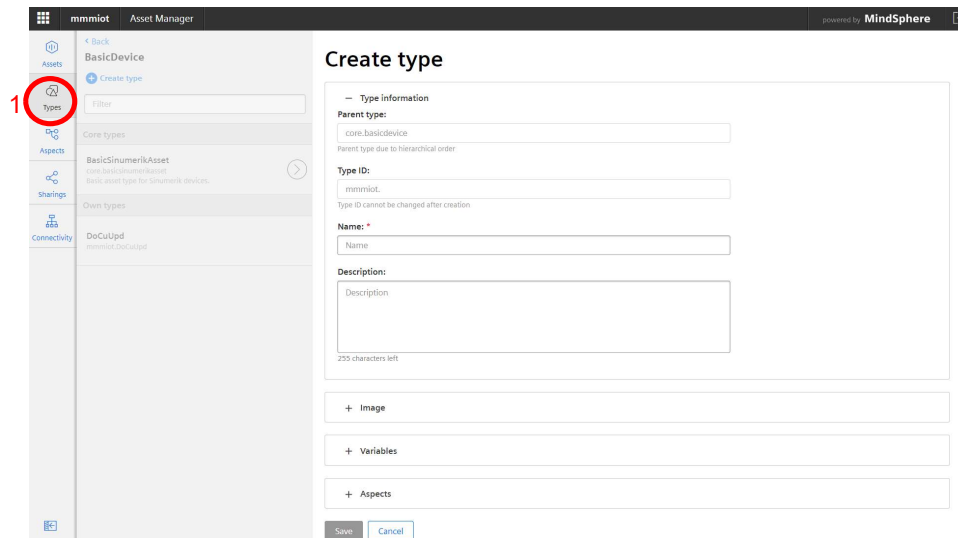
5. Enter a name for the new asset type.
Entering the name is mandatory and activates the "Save" button.
 - Enter a description of the new asset type.
 - Select an image with the maximum permitted size of 5 MB.

Note

Images in the working area

Ensure that the name of the image in your working area is unique.

- Add your chosen variables.
- Add your chosen aspects.
- Click "Save" to create the new type.



View asset type (to ensure the type is created)

1. Open the "Types" window.
2. In the center window panel, select "BasicDevice" > "BasicSinumerikAsset".
3. In the text box "Filter", enter the name.

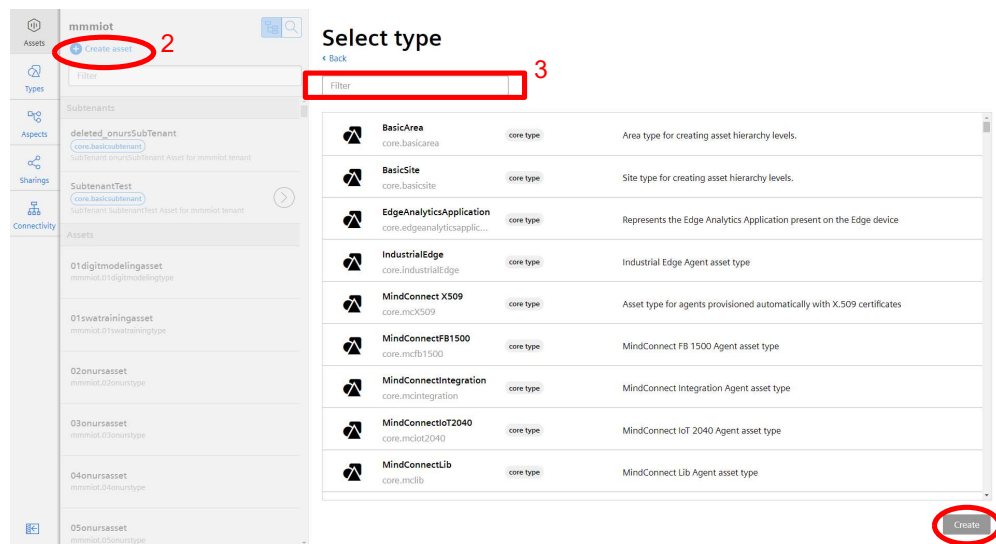
The corresponding data is displayed in the right-hand window area

2.1.6.2 Creating an asset

Open the "Asset Manager" window as described in chapter "Configuring MindSphere"

Procedure

1. In the left window panel, click "Assets".
2. In the center window panel, click "+ Create asset".
In the right window panel, you can see "Select type".
3. In the "Filter" field, enter the name of the required asset type or select the type that you have just generated, as described in chapter "Creating an asset type", from the list. Select the asset type by clicking "create" in the lower right corner.



4. The "New asset" window opens.
 - In the "Name: *" input field, enter a name. This input field is a mandatory field.
 - Populate the input fields in the "General" and "Location" areas.The "Save" button is activated.
 - Click "Save" to save the new asset.

Assets

Types

Aspects

mmmdev

Create asset

Filter

AMB

core.basicsubtenant

SubTenant AMB Asset for

AMB_FFG

core.basicsubtenant

SubTenant AMB_FFG (MAG) Asset

GL_WRO

core.basicsubtenant

SubTenant GL_WRO Asset for mmmdev

GL_WRO1

core.basicsubtenant

SubTenant GL_WRO1 Asset for

GL_WRO2

core.basicsubtenant

SubTenant GL_WRO2 Asset for

01onurssecondasset

mmmdev.01onurssecondtype

02onurssecondasset

mmmdev.02onurssecondtype

0402iot2040

core.micr2040

0_Timezone Istanbul

mmmdev.basicinumerikampasset

11_02_melih_1

mmmdev.1102_melih_1_1

11h06gokalp8ocak19asset11h06

mmmdev.gokalp8ocak19type11h06

19032019RegressionTestAsset

mmmdev.19032019RegressionTestAsset

20032019TestAsset

mmmdev.20032019AssetType1

21032019TestAsset

mmmdev.21032019TestAssetType

27DCellA

mmmdev.27DCellT

28022019FileUploadAsset1

mmmdev.28022019FileUploadAssetType

Add asset

General

Type ID:

mmmdev.SinumerikBasicType1

Selected type of asset cannot be changed

Name:

Name

Description:

Description

255 characters left

Location

Street:

Street

Postal code:

City:

Postal code

City

Country:

Region:

Country

Region

Latitude:

Longitude:

45.00000001

45.00000001

Time zone:

Select...

Variables

No variables entered yet

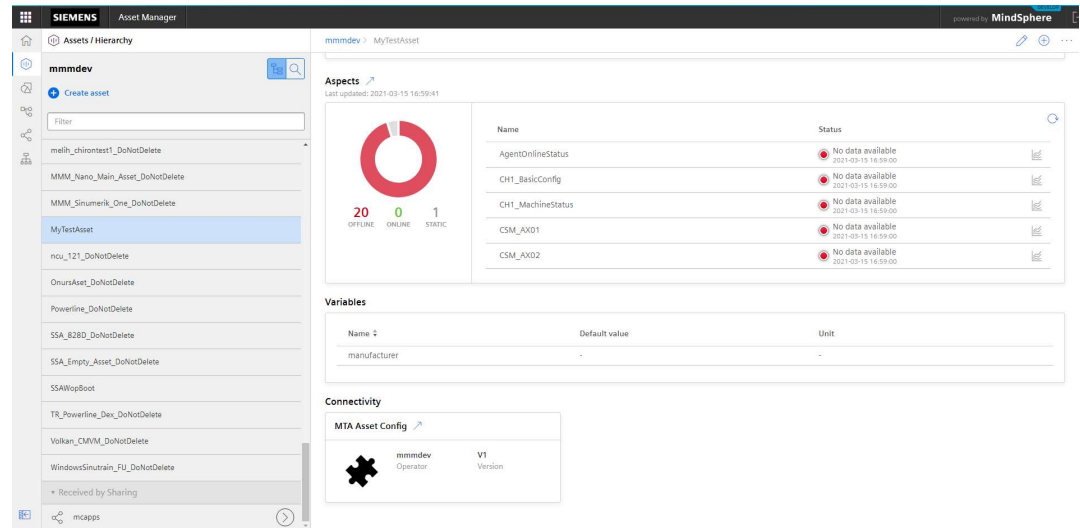
Aspects

Name	Aspect	Category
> connectivityStatus	core.connectivitystatus	Static
> status	core.agentstatus	Dynamic

* Required input field

Save Cancel

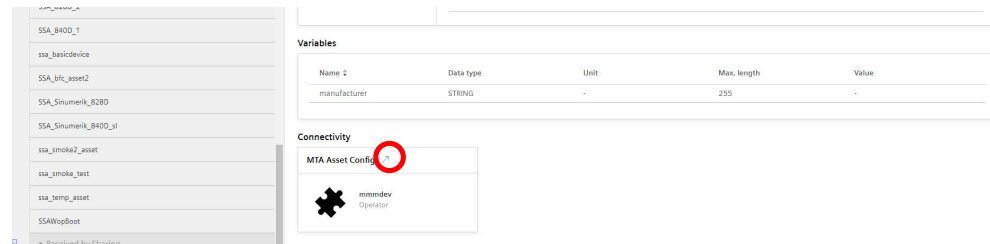
5. The new asset is displayed.



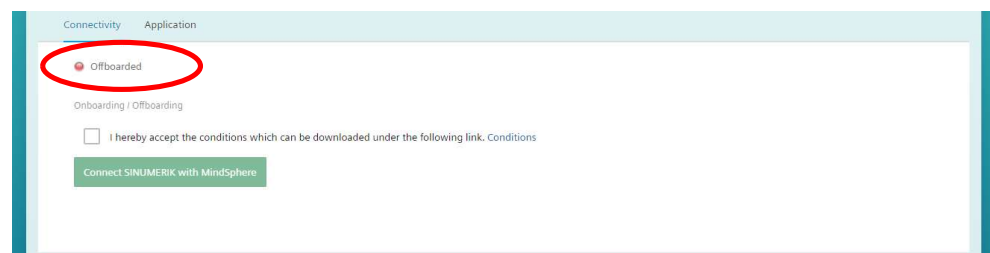
2.1.6.3 Onboarding an asset

Open the "Asset Manager" window as described in chapter "Configuring MindSphere"

1. Select an asset in the center windowpane.
2. Click the blue arrow icon next to "MTA Asset Config" icon in the bottom side of the webpage:



3. The "MTA Asset Config" window opens, and you can see the connection status in the "Connectivity" tab, e.g. "Offboarded"



4. Select the "I hereby accept the conditions, which can be downloaded under the following link. Conditions" check box.

- Click the "Conditions" link.

The "MindSphere Terms & Conditions" window opens.

- Click on your region.

- From the list, select the appropriate Terms & Conditions.

- Read the Terms & Conditions.

- OR -

Download the Terms & Conditions.

- OR -

Print the Terms & Conditions.

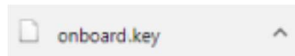
- Close the window.

The "Connectivity" window is displayed again.

5. Click the "Connect SINUMERIK with MindSphere" button to connect the asset with MindSphere.

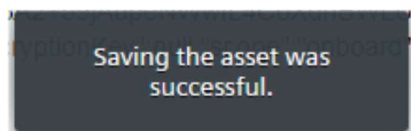
More information on Asset Manager can be found in the following documentation: "Manage MyMachines" Function Manual, in the "Integrating MindSphere" Chapter.

6. The "onboard.key" is generated and shown below the status bar. Please note that you neither change the name nor content of the file.



7. Click the "Save" button to accept the entries and save a consistent version of the configuration.

Wait for confirmation that the asset was successfully saved.



8. Then copy the "onboard.key" to the control system.

Insert the "onboard.key" file into the "boot_job" folder.

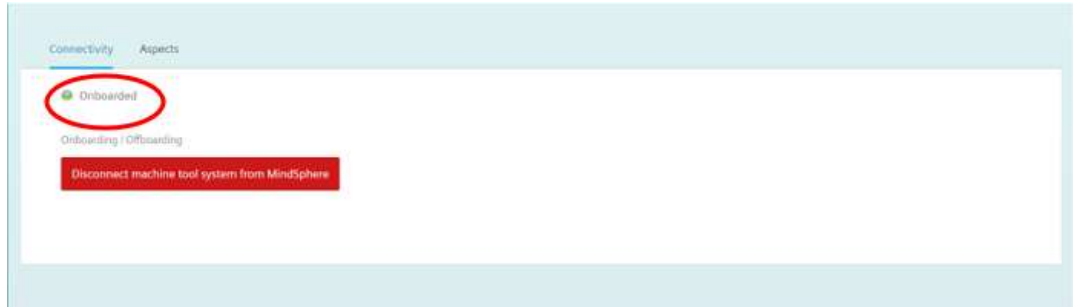
Alternatively, you can also insert the "onboard.key" file into the following directory: /user/sinumerik/hmi/appl.

If there is already a "cert.key" file in the /var/tmp/boot_job folder, the control was already connected to MindSphere. If you want to establish a new connection, then delete the existing file and insert the new "onboard.key" file.

Note

It is recommended to use an External drive (e.g. 4GB USB Pen) or network fileshare to transfer the onboard.key file into the respective directory.

9. The displayed green lamp next to the connectivity status “Onboarded” indicates that the onboarding procedure was successful.



2.1.7 Configuring data acquisition

2.1.7.1 Variable types

Several examples of acquiring variables from a FANUC control are listed in the following table. Additional variables, which are supported by the FOCAS library, are also possible.

Name	Data type	Adress
AxisAbs1	DOUB LE	/TPC/focas/cnc/dynamic2/pos/absolute[1]
AxisAbs2	DOUB LE	/TPC/focas/cnc/dynamic2/pos/absolute[2]
AxisAbs3	DOUB LE	/TPC/focas/cnc/dynamic2/pos/absolute[3]
AxisRel1	DOUB LE	/TPC/focas/cnc/dynamic2/pos/relative[1]
AxisRel2	DOUB LE	/TPC/focas/cnc/dynamic2/pos/relative[2]
AxisRel3	DOUB LE	/TPC/focas/cnc/dynamic2/pos/relative[3]
Axis1_dist	DOUB LE	/TPC/focas/cnc/dynamic2/pos/distance[1]
Axis2_dist	DOUB LE	/TPC/focas/cnc/dynamic2/pos/distance[2]
Axis3_dist	DOUB LE	/TPC/focas/cnc/dynamic2/pos/distance[3]
Axis1	STRING	/TPC/focas/cnc/axisname[1]
Axis2	STRING	/TPC/focas/cnc/axisname[2]
Axis3	STRING	/TPC/focas/cnc/axisname[3]
Spindle1	STRING	/TPC/focas/cnc/spdlname[1]
ActFeedRate	DOUB LE	/TPC/focas/cnc/dynamic2/actf
SequenceNr	DOUB LE	/TPC/focas/cnc/dynamic2/seqnum

Name	Data type	Adress
feedRatepoOvr	DOUBLE	/TPC/focas/pmc/pmcrng/G/byte[1,12](mmm_fanuc_feedoverride)
speedOvr	DOUBLE	/TPC/focas/pmc/pmcrng/G/byte[1,30](mmm_fanuc_spindleoverride)

2.1.7.2 Overview

Using this function, you can individually configure which data is sent from the machine to MindSphere and how this data is sent. If a specific alarm occurs, for example, you can define that

the HMI trace, NC status and machine data are sent from the machine to MindSphere. The MindSphere "Shopfloor Management Application" application allows you to individually

configure the following trigger:

- Time-based/cyclic trigger
- Configuring a value-based trigger (variable)
- Alarm based trigger

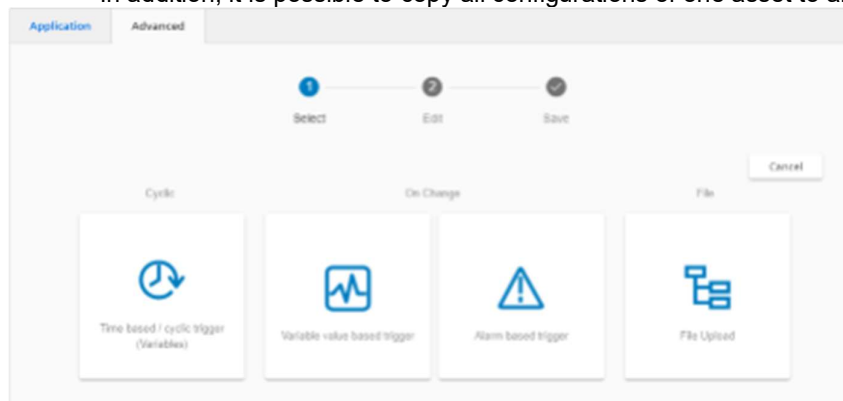
In addition, you can also send an alarm by email.

More information on the configuration is provided in Chapter: Configuring an alarm message

and sending by email

- File Upload

In addition, it is possible to copy all configurations of one asset to another asset.



2.1.7.3 Time-based/cyclic trigger

Configure the "Time-based/cyclic trigger", to send variable values from the machine to MindSphere at regular intervals:

Parameter	Description						
Create aspect							
Aspect name	Enter a name to designate a common group of variables. The name must be unique and not exceed 30 characters. The following characters are permissible: <ul style="list-style-type: none"> • Letters • Underscore • Numbers 						
Read cycle used							
Time interval	The sampling rate of the data acquisition is specified with this value. Select the time period from the drop-down list: <ul style="list-style-type: none"> • 5 seconds • 30 seconds • 1 minute • 5 minutes • 15 minutes • 30 minutes • 1 hour • 4 hours • 12 hours • 24 hours 						
Variable							
Name	In the variable set, enter a name for the variables to be acquired. The name must be unique and not exceed 30 characters. The following characters are permissible: <ul style="list-style-type: none"> • Letters • Underscore • Numbers Remark: The name of the variable must not consist solely of numbers. In this case, the input field is marked red.						
Address	Enter the address or the path of the variable. Examples: <table border="1" data-bbox="479 1144 1073 1291"> <tbody> <tr> <td>Axis data:</td><td> /Nck/MachineAxis/AATRAVELCOUNT[1] /Nck/MachineAxis/AATRAVELDIST[2] </td></tr> <tr> <td>Channel data:</td><td> /Channel/ChannelDiagnose/CuttingTime[u1] /Channel/ChannelDiagnose/OperatingTime[u1] </td></tr> <tr> <td>Machine operating mode:</td><td>/Bag/State/opMode[u1]</td></tr> </tbody> </table>	Axis data:	/Nck/MachineAxis/AATRAVELCOUNT[1] /Nck/MachineAxis/AATRAVELDIST[2]	Channel data:	/Channel/ChannelDiagnose/CuttingTime[u1] /Channel/ChannelDiagnose/OperatingTime[u1]	Machine operating mode:	/Bag/State/opMode[u1]
Axis data:	/Nck/MachineAxis/AATRAVELCOUNT[1] /Nck/MachineAxis/AATRAVELDIST[2]						
Channel data:	/Channel/ChannelDiagnose/CuttingTime[u1] /Channel/ChannelDiagnose/OperatingTime[u1]						
Machine operating mode:	/Bag/State/opMode[u1]						

Parameter	Description
Data type	Select the data type of the variable from the drop-down list: <ul style="list-style-type: none"> • DOUBLE • BOOLEAN • STRING Note: If values exceed the floating-point number accuracy, they are displayed with faulty decimal places.
Unit	Select the physical unit of the variable from the drop-down list. Example: m/s ²

1. Click on the "Time-based / cyclic trigger (variables)" function.



2. The "Time-based trigger" input window opens.
 - Enter a name in the "Create aspect" input field.
 - Enter the sampling rate in the "Read cycle used" input field.
 - Enter the variable properties in the input fields.
 - Click the "+" button to add a new variable.

Repeat this step as often as is necessary.

Note

Limiting the number of variables

You can create a maximum of 50 variables with 5-second options.

A warning message appears when the maximum number is reached.

- Click the "Cancel" button to exit the Properties window without saving the entries.

You are taken back to the aspects overview.

- OR -

Click the "Save" button to accept the entries.

The "Data recording saved successfully" message appears.

- Click the "OK" button to exit the operation.

You are taken to an overview of the aspects.

A screenshot of the "Shopfloor Management Application" interface. The window is titled "Time based trigger" and has a progress bar at the top with three steps: "Select", "Edit" (which is currently active), and "Save". Below the progress bar, there are three main sections: "Create aspect" with a text input field for "Cyclic aspect name"; "Applied reading cycle" with a dropdown menu for "Reading cycle"; and "Variables" with a table for defining variables. The table has columns for "Name", "Address", "Datatype", and "Unit", and a "+" button to add new variables. The "Variables" section also includes a "2/100" indicator. At the bottom right, there are "Save" and "Cancel" buttons.

2.1.7.4 Configuring a value-based trigger (variable)

View "Variable-based trigger" provides you with functions to create user-defined condition rules based on variable values.





If a configured condition occurs, then the following data and values are sent to MindSphere:

- Variable value
- Machine trace files
- User-defined file(s) in the specified directory

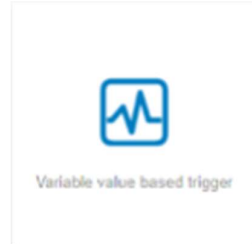
Parameter	Description
Create aspect	
Aspect name	Enter a previously created variable name. The name must be unique. If the aspect does not yet exist in MindSphere, the aspect is created when saving the configuration.
Configuring a trigger	
With these settings, you specify the trigger conditions for the following actions.	
Variable address	Enter the address of the variables.
Data type	From the drop-down list select the data type of the variable. <ul style="list-style-type: none"> • DOUBLE • BOOLEAN • STRING
	From the drop-down list, select the comparison operation that is restricted to the format of the variables: <ul style="list-style-type: none"> • Greater than • Less than • Equal to • Not equal to
Variable value	Enter a value.
With the following configuration	
Debounce time	Enter the debounce time. Remark: After the Condition variable has reached a specified value, the control checks whether the condition is still present until the debounce time has expired. The control does not check the status again during this time.
sec	Select the time unit from the drop-down list: <ul style="list-style-type: none"> • sec • min • hr

Parameter	Description
Hysteresis	<p>Select the check box if you want to include hysteresis.</p> <p>The hysteresis can be a value or a percentage (absolute or relative). Example: The temperature is 30 degrees. The absolute hysteresis equals 5. In this case, the check is from 25 to 35 °C instead of 30 °C.</p> <p>Activate the "Quick Range" option button if the relative value in relation to the comparison value is to be recorded.</p> <p>Activate the "Absolute" option button if the absolute value in relation to the comparison value is to be recorded.</p> <p>A new trigger on the comparison value is only performed when the actual value differs from the comparison value by more than the specified hysteresis.</p> <p>Enter a comparison value, this is restricted according to the selection of the address format.</p>
Then acquire the following values	
The following variable is recorded and sent to MindSphere.	
Variable address	Shows the address of the variable.
Data type	<p>Select the data type of the variable from the drop-down list:</p> <ul style="list-style-type: none"> DOUBLE BOOLEAN STRING
Duration	<p>Enter the recording duration.</p> <p>The duration must be longer than the cycle.</p> <p>Select the time unit from the drop-down list:</p> <ul style="list-style-type: none"> sec min hr <p>Minimum of 30 seconds.</p> <p>Maximum of 24 hours.</p>
Cycle	<p>Enter the cycle duration.</p> <p>Select a time unit from the drop-down list:</p> <ul style="list-style-type: none"> sec min hr <p>30 seconds is the minimum</p> <p>24 hours is the maximum</p>
Adding trace files to the trigger	
Recorded traces are sent as files to MindSphere.	
Trace files	<p>Activate the option checkbox for the following data:</p> <ul style="list-style-type: none"> HMI trace NC status Machine data <p>Activate the action log setting on the machine.</p> <p>More information can be found in this Chapter: Setting the action log (Page 51).</p>

Parameter	Description
Selecting file(s) to be uploaded The selected files that are available on the machine will be transferred to the corresponding MindSphere tenants database.	
File or directory path *	Enter the file or directory path. <ul style="list-style-type: none"> The maximum file size is 100 MB If the agent is offline, the maximum buffer size for storage is 100 MB. If the hard disk is full, it is possible that not all of the files are sent to MindSphere. When the directory path has been created, the file upload of the last 15 files in this directory to MindSphere takes place.

Icons	Description
	You will receive further information.
	Closes the entry field.
	Click on the down arrow to open and create further configurations.
	Click on the up arrow to close the area of further configurations.

Click on function "Variable value based trigger" to specify dependencies.



- The "Variable-based trigger" input window opens.
- Enter a name in the "Cyclic aspect name" input field.
- Define a variable as trigger.
- Define the settings for the trigger.
 - Define which data is sent to MindSphere if the trigger occurs:
 - Recording variables
 - Enter a variable address.
 - Trace files
 - Activate the corresponding checkbox for "HMI-Trace", "NC-Status" or "Machine Data".
 - Files
 - Enter a file name or a directory path.
- Click the "Cancel" button to exit the Properties window without saving the entries. A safety message is output, which you must confirm. You are taken back to the aspects overview.
- OR -
- Click on "Save" to accept the data entered. Message "Data recording saved successfully" is output. Click on "OK" to exit the operation. You are taken back to the aspects overview.

Shopfloor Management Application

Application Advanced

Select Edit Save

Variable based trigger

Create aspect

Aspect name

Configure the trigger

Variable address DOUBLE Greater or equal Variable value

With the following configuration

Debounce time 500

☒ Hysteresis ☐ Relative ☐ Absolute

Zurückgefolgende Variablen auf

Variable address DOUBLE Duration 500 Cycle 500

Add trace files to trigger

☒ HMI-Trace ☒ NC-Status ☒ Machine Data

Select file(s) to be uploaded

File or Directory Path

2.1.7.5 Alarm-based trigger



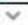

The "alarm-based trigger" reacts to all alarms programmed in the control. With this function, you can send specific alarms for a certain aspect and acquired status data to MindSphere.

These alarms also contain the user range of alarm numbers that are assigned the machine functions for the machine diagnostics. If machine diagnostics are not performed on the basis of alarm numbers, these error messages cannot be integrated. The alarm numbers that are triggered can be entered individually or in ranges. You can select individual or ranges of alarms from a selection.

When certain alarms occur, you can upload user-defined files to MindSphere.

Parameter	Description
Create aspect	
Aspect name	Enter a descriptive name for the aspect. The name must be unique.
Include alarms	
Alarm numbers:	In the case of individual alarms, enter the alarm number or the alarm ID that activates the trigger. The alarm number must be within the range from 0 to 999999. The alarms are entered in the following notation: <ul style="list-style-type: none"> Separate the individual alarms through a comma, e.g. 3200, 32100, ... Enter the alarm number ranges with a "-" character, e.g. 4000-5000 The alarm list must not exceed 200 characters.
Alarm intervals:	Enter the alarm limits. <ul style="list-style-type: none"> From: Enter the lowest alarm ID, e.g. 0 To: Enter the highest alarm ID, e.g. 999999 All alarms between 0 and 999999 are included.
Exclude alarms	
Alarm numbers:	Enter the alarm numbers that do not activate the trigger. Excluded alarms are not transmitted to MindSphere. The alarm number must lie within the range from 0 to 999999. The alarms are entered in the following notation: <ul style="list-style-type: none"> Separate the individual alarms through a comma, e.g. 3200, 32100, ... Enter the alarm number ranges with a "-" character, e.g. 4000-5000 The list of alarm numbers must not exceed 200 characters.
Alarm intervals:	Enter the alarm limits: <ul style="list-style-type: none"> From: Enter the lowest alarm ID, e.g. 0 To: Enter the highest alarm ID, e.g. 999999 All alarms between 0 and 999999 are included.
Add trace files to the trigger	
Trace files	Activate the option checkbox for the following data: <ul style="list-style-type: none"> HMI trace NC status Machine data The sum of all data is limited to a maximum of 100 MB. Activate the action log setting on the machine. You can find more information in this Chapter: Setting the action log (Page 51).

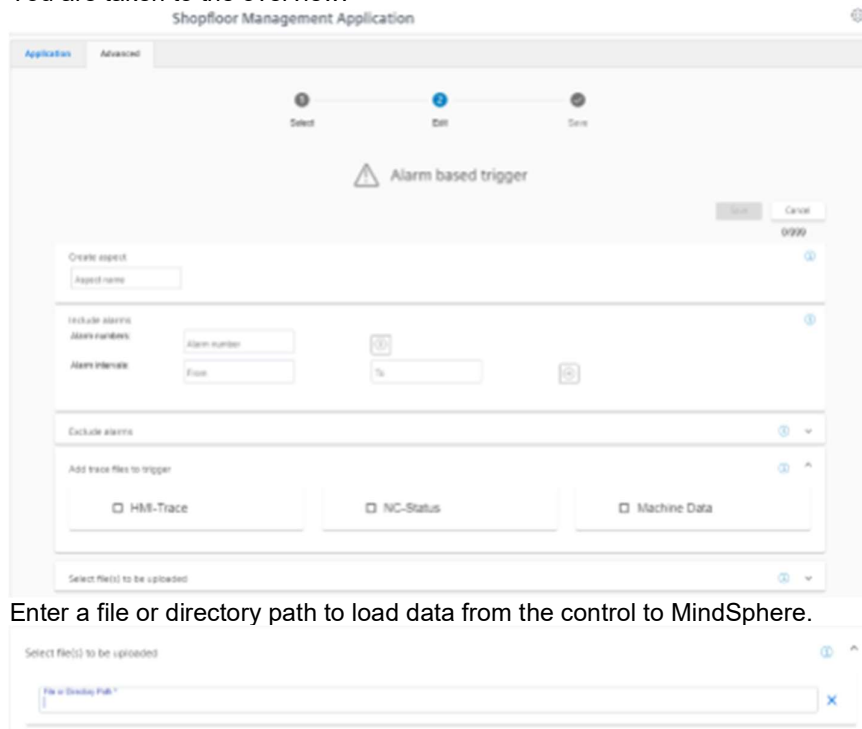
Parameter	Description
Select file(s) to be uploaded	
The selected files that are available on the machine will be transferred to the corresponding MindSphere tenants database.	
File or directory path *	Enter the file or directory path. <ul style="list-style-type: none"> The maximum permissible file size is 100 MB If the agent is offline, the maximum buffer size for storage is 100 MB. If the hard disk is full, it is possible that not all of the files are sent to MindSphere. When the directory path has been created, the file upload of the last 15 files in this directory to MindSphere takes place.

Icons	Description
	You will receive further information.
	Closes the entry field.
	Click on the down arrow to open and create further configurations.
	Click on the up arrow to close the further configurations area.

1. Click the "Alarm-based trigger" function to define alarm properties, such as when an alarm should be displayed.



2. The "Alarm-based trigger" input window opens.
 - Enter a name for the aspect and specify the properties.
 - Click on the "Cancel" button.
- You receive a safety message that you must confirm.
Then you will be returned to the overview.
- OR -
- Click the "Save" button to accept the entries.
- The "Data recording saved successfully" message appears.
- Click the "OK" button to exit the operation.
- You are taken to the overview.



Enter a file or directory path to load data from the control to MindSphere.

Alarm types

FANUC controls support 16 alarm types. In turn, each alarm type can have up to 10,000 numerical variables.

The following table lists all of the possible alarms:

FANUC Alarm type	FANUC Alarm range	Numerical alarm ID area
IO	IO0000 – IO9999	120000 – 129999
PS	PS0000 – PS9999	130000 – 139999
OT	OT0000 – OT9999	140000 - 149999
OH	OH0000 – OH9999	150000 - 159999
Sv	Sv0000 – Sv9999	160000 - 169999
SR	SR0000 – SR9999	170000 - 179999
MC	MC0000 – MC9999	180000 - 189999
SP	SP0000 – SP9999	190000 - 199999
DS	DS0000 – DS9999	200000 - 209999
IE	IE0000 – IE9999	210000 - 219999
BG	BG0000 – BG9999	220000 - 229999
SN	SN0000 – SN9999	230000 - 239999
EX	EX0000 – EX9999	240000 - 249999
PC	PC0000 – PC9999	250000 - 259999

- Either configure the individual subranges - or all of the alarms at once.
- To acquire all of the alarms, configure the range from 100,000 to 260,000.

Example

You want to see the display of all software alarms:

Enter:

- Left: 100,000
- Right: 260,000

2.1.7.6 File Upload

Function "File Upload" allows files to be sent from the SINUMERIK control to MindSphere.

You can send multiple files from various directories in the same trigger. In a cyclical trigger, you

can upload trace files along with the customer-specific files.

There are two variants of the "File upload" function:

- Change-dependent file upload

The upload is carried out after a file is changed on the SINUMERIK control. The change date

of the files is checked cyclically, i.e. hourly, on the SINUMERIK control.

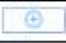
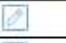



- Cyclic file upload

The upload is carried out in a defined time cycle. The cycle duration is specified in the user

interface.

The cyclic file upload does not check files for changes.

Parameter	Description
Configuration name	Enter a name for the configuration. The name must be unique and not exceed 30 characters. The following characters are permissible: <ul style="list-style-type: none"> • Letters • Underscore • Numbers
Cyclic	The files are transmitted to MindSphere at defined intervals. Select the time interval from the drop-down list: <ul style="list-style-type: none"> • 1 hour • 2 hours • 4 hours • 6 hours • 8 hours • 12 hours • 24 hours • 1 week • 1 month
When modified	The control checks the files at 1-hour intervals. If the file or directory changes, the relevant files are uploaded to MindSphere.
Add trace files to the trigger	Recorded traces are sent as files to MindSphere. Activate the checkbox for the following data: <ul style="list-style-type: none"> • HMI trace • NC status • Machine data Activate the action log setting on the machine. More information can be found in this Chapter: Setting the action log (Page 51).
File path	Enter the correct file path. A directory path must end with a "/" or "\" character. A maximum of 10 directories is allowed.
File	Enter the file name. You can use the asterisk symbol (*) as a placeholder. A maximum of 10 files per directory is allowed. If only a directory path is entered instead of a file, the last 10 modified files in the directory will be sent to MindSphere.

Icon	Description
	Create a new entry for the file or directory path.
	Change the entry for the file or directory path.
	Save the entry for the file or directory path.
	Delete the entry for the file or directory path.
	You will receive further information.

Files

The maximum file size is 100 MB.

Use the following file extensions for the "File Upload" function:

- .xml
- .txt
- .log
- .png
- .jpg
- .ohs
- .pms
- .ems
- .mds
- .pdf
- .ini
- .csv
- .json
- .sav
- .mst
- .bst
- .stt

Directory paths

The following directories are available for the file upload:

- /card/user/sinumerik/hmi/appl/
- /card/oem/sinumerik/hmi/appl/
- /card/oem/sinumerik/hmi/OMATIVE_ACM/data/
- C:\ProgramData\Siemens\MotionControl\oem\sinumerik\hmi\appl\
- C:\ProgramData\Siemens\MotionControl\user\sinumerik\hmi\appl\
- /card/user/sinumerik/hmi/cfg/
- /card/oem/sinumerik/hmi/cfg/
- /card/user/sinumerik/hmi/log/
- /card/oem/sinumerik/data/archive/
- /card/system/tmp/

- <temp>\

You can create multiple subdirectories in this directory.

- /var/user/

- C:\temp\datatransfer\

On PCU WIN NT

-

C:\ProgramData\Siemens\MotionControl\oem\sinumerik\hmi\OMATIVE_ACM\data\

- C:\temp\datatransfer\

On PCU WIN XP

- var\tmp\datatransfer\

For Linux

- /user/sinumerik/hmi/data/version/

SINUMERIK Operate also supports the following directories:

- D:\backups\

- D:\description\

Procedure

1. Click the "File Upload" function.



2. The "File Upload" input window opens.

In the "File Upload" area, you can see the number of configurations created/number of possible configurations on the right.

3. Enter the name for the configuration.
 4. Select the type of file upload and, if applicable, the cycle length.
 5. Activate the checkboxes for the trace files that you want to transfer along with the customer-specific files.
 6. Click the "+" button in the file paths area.
To simultaneously send files from multiple directories, click on this button for each directory.
Once the maximum possible number of directories is reached, the button is deactivated.
 7. Enter the directory path and click on the check mark.
 8. Specify the files to be transferred for each directory:
 - Click the "+" button in the file area.
To send multiple files from this directory, click on the "+" button for each file.
Once the maximum possible number of files is reached, the button is deactivated.
 - Enter the file name. You can use the asterisk symbol (*) as a placeholder.
If more than 10 files correspond to the file name with placeholder, only the last 10 most recently modified files will be sent to MindSphere.
 - Click on the check mark.
 9. Click on the "Recycle bin" icon in the appropriate line to delete a directory path or a file.
 10. Click on "Save" to save the configuration.
- OR -
- Click the "Cancel" button to exit the window without saving the entries.
You are taken back to the overview.

11. The "Data recording saved successfully" message appears.

Click the "OK" button to exit the operation.

12. You can view the uploaded files in the Fleet Manager.

You can find more

2.1.7.7 Copying configurations

You have the option of copying the configurations for variables and file upload from one asset



to any number of assets.

If a variable with the same name already exists for the target asset, then the address of the

variables on the target asset are overwritten when copying.

The copying procedure is canceled as soon as the target asset has reached the maximum number

of variables.

Icons	Description
	Copies all configurations of an asset to other assets.
	Shows the source and target of the last copying procedure.

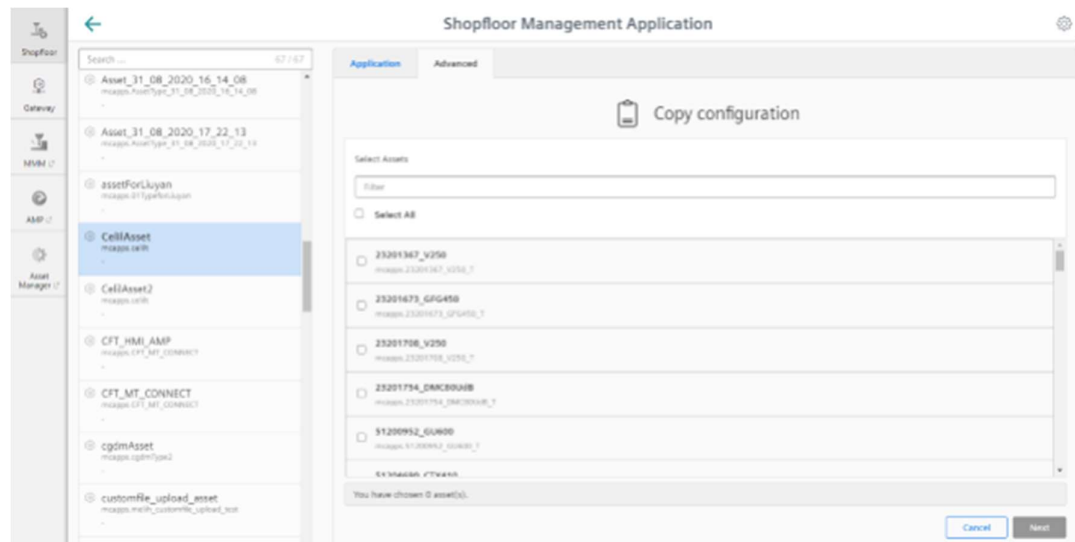
Procedure

1. In the "Shopfloor Management Application", select the asset with the required configurations.

2. Open the "Advanced" tab on the right-hand side of the window.

3. Click on "Copy".

All of the available target assets are listed.



4. To filter the list, enter the name of the asset (or parts of it) in the search field.

5. Activate the checkbox in front of the required asset, or activate checkbox "Select All".

6. Click on "Next".

The selected assets are displayed for checking.

7. Click on "Apply".

The copying procedure starts. Progress is displayed for each asset.

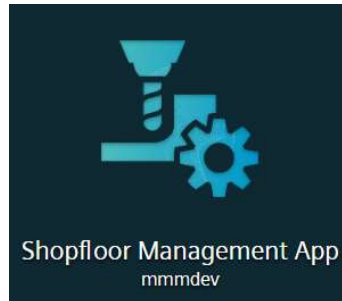
2.2 Operation

2.2.1 Activating the data acquisition

2.2.1.1 Overview

The "Shopfloor Management Application" MindSphere application allows you to configure the assets.

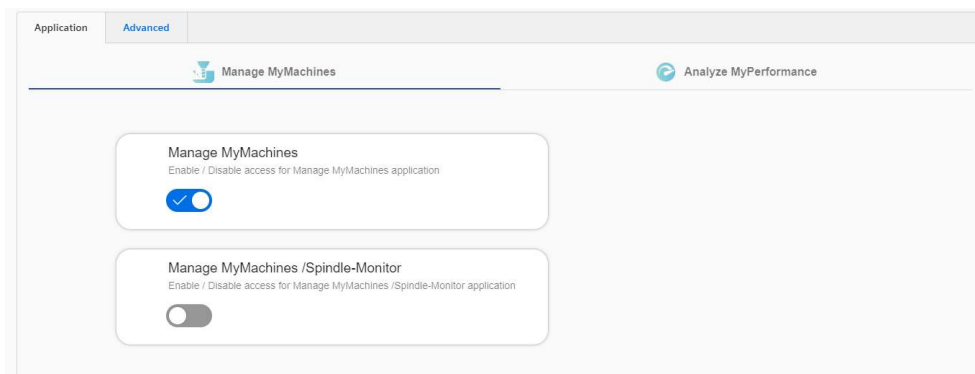
1. Click "Shopfloor Management Application" app:

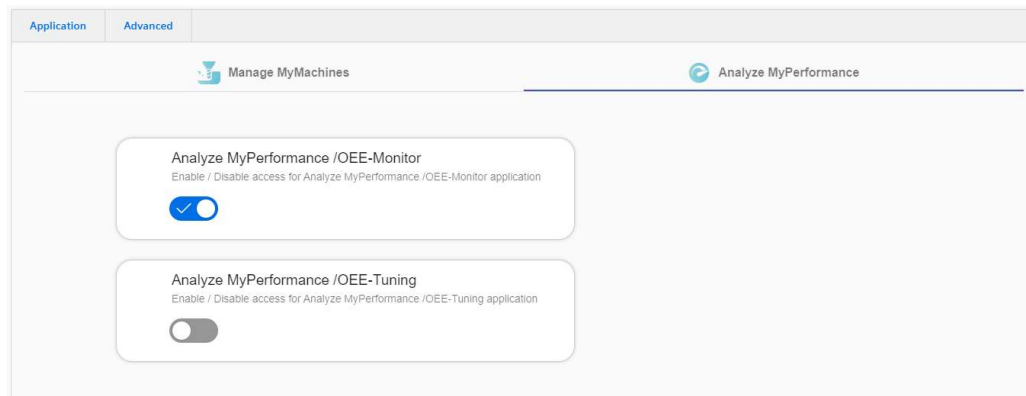


2. Find the required asset using "Search..." panel.

3. Click the "Application" tab.

The following slide toggles are available in the "Application" tab:

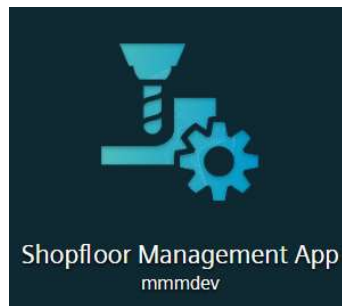




- **Manage MyMachines**
Activation/deactivation of access to the "Manage MyMachines" application
- **Analyze MyPerformance**
Activation/deactivation of access to the "Analyze MyPerformance" application

2.2.1.2 Procedure

1. Click "Shopfloor Management Application" app:



2. Find the required asset using "Search..." panel.
3. Click the "Application" tab:
If you wish to activate of access to the "Manage MyMachines" application for this asset, select Manage MyMachines tab:
 - Set the slide toggle for "Manage MyMachines" to "ON" to activate Manage MyMachines usage for this asset
 - Set the slide toggle for "Manage MyMachines /Spindle-Monitor" to "ON" to activate Manage MyMachines/Spindle-Monitor usage for this asset
 - Click "Save" to save the settings.
If you wish to activate of access to the "Analyze MyPerformance" application for this asset, select Analyze MyPerformance tab:
 - Set the slide toggle for "Analyze MyPerformance /OEE-Monitor" to "ON" to activate Analyze MyPerformance /OEE-Monitor usage for this asset
 - Set the slide toggle for "Analyze MyPerformance /OEE-Tuning" to "ON" to activate Analyze MyPerformance /OEE-Tuning usage for this asset
 - Click "Save" to save the settings.

NOTICE**Deactivation of the Application**

If you want to deactivate the application in order to stop the data acquisition and thus to stop the payment rhythm, set the slide toggle for the application to “OFF”.

Note that each time you set the slide toggle to “ON” fees are incurred.

Important:

Please note that if you disable the following toggle for Manage MyMachines access and enable the toggle again, according to the Terms and Conditions the Pricing Model will be charged again.

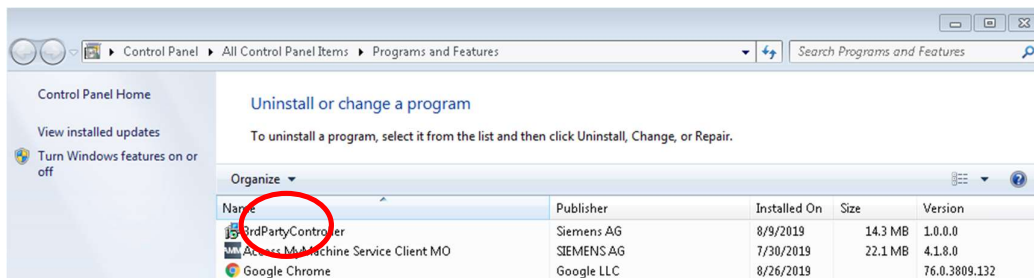
Please note that if you disable the following toggle for Analyze MyPerformance access and enable the toggle again, according to the Terms and Conditions the Pricing Model will be charged again.

2.2.2 Uninstall procedure**2.2.2.1 Restore ePS-Client settings file**

ePS-Client settings file needs to be restored, otherwise it can still try to load 3rdParty technology driver which will no longer be present once 3rdPartyController is uninstalled.

2.2.2.2 Uninstall 3rdPartyController

Use Control Panel to locate 3rdPartyController installation. Simply press uninstall.



After uninstall is complete, machine need not to be restarted.

3 Appendix

3.1 Service and support

Industry Online Support

Do you have any questions or need assistance?

Siemens Industry Online Support offers round the clock access to our entire service and support know-how and portfolio.

The Industry Online Support is the central address for information about our products, solutions and services.

Product information, manuals, downloads, FAQs, application examples and videos – all information is accessible with just a few mouse clicks:

support.industry.siemens.com

Technical Support

The Technical Support of Siemens Industry provides you fast and competent support regarding all technical queries with numerous tailor-made offers

– ranging from basic support to individual support contracts. Please send queries to Technical Support via Web form:

www.siemens.com/industry/supportrequest

SITRAIN – Training for Industry

We support you with our globally available training courses for industry with practical experience, innovative learning methods and a concept that's tailored to the customer's specific needs.

For more information on our offered trainings and courses, as well as their locations and dates, refer to our web page:

www.siemens.com/sitrain

Service offer

Our range of services includes the following:

- Plant data services
- Spare parts services
- Repair services
- On-site and maintenance services
- Retrofitting and modernization services
- Service programs and contracts

You can find detailed information on our range of services in the service catalog web page:

support.industry.siemens.com/cs/sc

Industry Online Support app

You will receive optimum support wherever you are with the "Siemens Industry Online Support" app. The app is available for iOS and Android:

support.industry.siemens.com/cs/ww/en/sc/2067

3.2 Application support

Siemens AG
Digital Factory Division
Factory Automation
Production Machines
DF FA PMA APC
Frauenauracher Str. 80
91056 Erlangen, Germany
mailto: tech.team.motioncontrol@siemens.com

3.3 Links and literature

Table 3-1

No.	Topic
\1\	Siemens Industry Online Support https://support.industry.siemens.com
\2\	Link to this entry page of this application example https://support.industry.siemens.com/cs/ww/en/view/Entry_ID
\3\	

3.4 Change documentation

Table 3-2

Version	Date	Modifications
V1.0	12/2019	First version of the document
V1.1	06/2020	Added support for Windows 10