

# AXIS Camera Station S1032 Recorder

## Out-of-the box ready server for high-definition surveillance



- > Ease of installation
- > Pre-configured
- > Optimized hardware
- > High-definition surveillance
- > AXIS Camera Station included
- > Extensive support

AXIS Camera Station S1032 Recorder is an out-of-the box ready rack server optimized for reliable high-definition surveillance. AXIS S1032 is pre-loaded with all the necessary software and pre-configured to minimize installation time. Completed with cameras, a desktop terminal and monitors, it forms a plug and play solution for mid-sized installations where active surveillance is needed.

AXIS S1032 is designed for quick installation in server rooms. The recorder is pre-loaded with AXIS Camera Station video management software, 32-channel licenses and other necessary system software.

System settings such as camera and storage configurations are pre-configured to further simplify system setup and maximize performance. Hardware components and storage capacity are optimized to meet the demands for reliable high-definition surveillance.

To further safeguard system uptime the server has redundant hard disks and power supplies. The package includes three-year hardware and software support.

AXIS Camera Station offers an intuitive user interface providing all the necessary features for effective surveillance such as flexible live-view layout, site maps, powerful event configuration, efficient alarm management and responsive PTZ control.

Intuitive timeline visualization and an efficient video search enable quick investigation and retrieval of evidence for safe and secure export.

AXIS S1032 can be completed with AXIS Camera Station S9001 Desktop Terminal with multiple monitor support for optimal system overview.



AXIS S9001 Desktop Terminal sold separately

# Technical Specifications - AXIS Camera Station S1032 Recorder

## Network Video Recorder - Rack Server

|   |  |
|---|--|
| <b>Models</b>                           | AXIS Camera Station S1032 Recorder<br>Version: 1   |
| <b>Number of channels</b>               | 32 Channels included, can be upgraded up to 48 channels (sold separately)  |
| <b>Processor</b>                        | Intel® Xeon® E5-2407 v2, 2.40GHz, 10MB Cache   |
| <b>Memory</b>                           | 2 x 4GB (8192MB)<br>Memory type: RDIMM, 1333 MHz, Low Volt, Single Rank, x8 Data Width   |
| <b>Storage</b>                          | 4 x 3TB (9TB usable space after RAID), 7200rpm HDD with 128MB cache and SATA 6Gb/s interface, RAID 5, Hot Plug<br>RAID Controller: PERC H710, 512MB NV Cache |
| <b>Graphic card</b>                     | Matrox 200 eR  |
| <b>Optical Disk Drive</b>               | OEM DVD RW   |
| <b>Operating System</b>                 | Microsoft Windows Professional Embedded 7  |
| <b>Network Card</b>                     | On-Board Broadcom 5720 Dual Port Gigabit NIC   |
| <b>Remote Management</b>                | iDrac 7 Express  |
| <b>System Performance Specification</b> |  |
| <b>Live Video streams</b>               | Not intended for local viewing of video.   |
| <b>Recording</b>                        | Qualified for recording up to 48 video channels with a total recording rate up to 192 Mbit per second.   |

## General

|                             |  |
|-----------------------------|--|
| <b>Compatible Products</b>  | Axis network cameras and encoders including HD, standard resolution, high resolution, Pan Tilt Zoom and thermal cameras with firmware 4.30 or later  |
| <b>Power</b>                | Dual, Hot-plug, Redundant Power Supply, 350 W  |
| <b>Connectors</b>           | 4 x USB 2.0, 2 x VGA, Serial port (DB9), 2 x Ethernet (RJ45), 2 x Power inlet  |
| <b>Operating conditions</b> | 10 °C to 35 °C (50 °F to 95 °F)  |
| <b>Dimensions</b>           | 43 x 483 x 607 mm (1.69 x 19.0 x 23.9 in), 1U Chassis  |
| <b>Weight</b>               | 13.6 kg (30.0 lb)  |
| <b>Approvals</b>            | EN/IEC/UL 60950-1, CSA C22.2 No. 60950-1, EN 62311, EN 55022, CISPR 22, EN 55024, CISPR 24, EN/IEC 61000-3-2, EN/IEC 61000-3-3, EN 50581, IEC60664-1 |
| <b>Hardware warranty</b>    | 3-years included   |

## Accessories

|                             |  |
|-----------------------------|--|
| <b>Included accessories</b> | Installation guide, Keyboard (International/US), Computer mouse, Power cable   |
| <b>System accessories</b>   | AXIS T8310 Video Surveillance Control Board, AXIS P8221 I/O Audio Module, AXIS A1001 Network Door Controller, AXIS Camera Station S9001 Desktop Terminal |

## AXIS Camera Station – Video Management Software

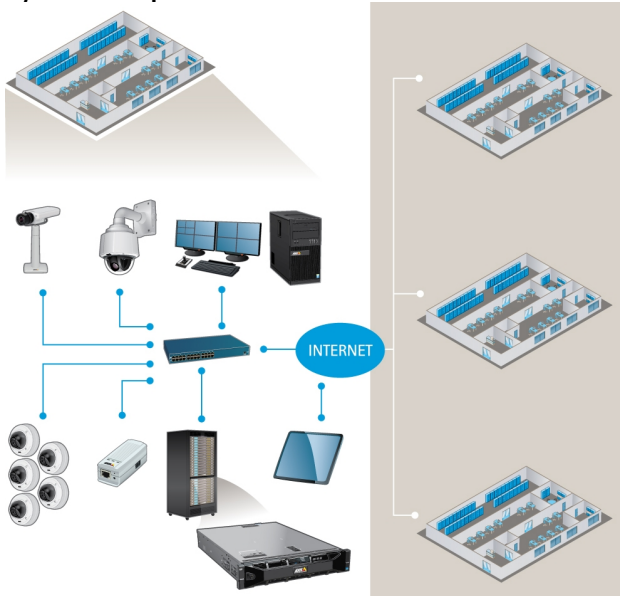
|                                    |   |
|------------------------------------|---|
| <b>Software</b>                    | Axis Camera Station 4.x   |
| <b>Languages</b>                   | All major languages   |
| <b>Video</b>                       |   |
| <b>Audio</b>                       | Two-way audio streaming, AAC, G.711, G.726 compression  |
| <b>Video compression</b>           | H.264 (MPEG-4 Part 10/AVC), Motion JPEG   |
| <b>Live view</b>                   |   |
| <b>Map function</b>                | Yes   |
| <b>PTZ Control</b>                 | Yes   |
| <b>Playback</b>                    |   |
| <b>Smart Search for recordings</b> | Yes   |
| <b>Playback</b>                    | Up to 64x or frame by frame<br>Up to 25 cameras synchronized playback   |
| <b>Export</b>                      | Manual and scheduled export, Single images in JPEG format, Video in ASF format, Digital signature on exported recordings, Standalone player |

## Triggers and events

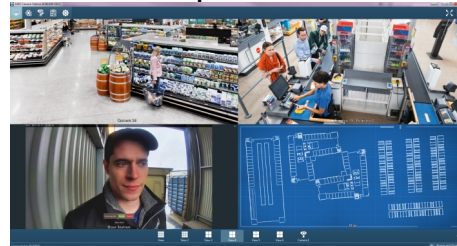
|   |   |
|---|---|
| <b>Event triggers</b>                     | Events triggered by video motion detection, Active Tampering Alarm, AXIS Cross Line Detection, External I/O, Action button, System triggers and device event triggers |
| <b>Scheduled recording</b>                | Schedule per camera for continuous recording or customization of weekday and weekend recordings   |
| <b>Alarm manager</b>                      | Yes   |
| <b>Microsoft Active Directory support</b> | Yes, multiple user access levels with password protection using local or Windows domain users (Active directory)  |

More information is available at: [www.axis.com/products/cam\\_station\\_software](http://www.axis.com/products/cam_station_software)

## System setup with AXIS S1032 and AXIS S9001



## Live view example



## Playback example

