



Profile

Opal Water Filter

IMPORTANT SAFETY INFORMATION

READ ALL INSTRUCTIONS BEFORE USING THE APPLIANCE

⚠ WARNING

To reduce the risk associated with ingestion of contaminants, do not use with water that is micro-biologically unsafe or of unknown quality. This indicates a hazardous situation which if not avoided could result in death or serious injury.

This Opal Water Filter is designed to provide fresh tasting ice and is tested by the manufacturer against ANSI/NSF Standard 42 for the reduction of Chlorine, Tastes and Odors.

For proper performance, this filter **MUST** be installed in accordance with these instructions.

Manufacturer assumes no responsibility or liability for damages arising out of misuse of this product.

NOTE: When performing a cleaning cycle, remove filter and replace the reservoir intake cap (see below).

NOTE: Do not run Opal without either the filter or reservoir intake cap installed. Failure to do so may void your Opal warranty.



Opal Water Filter certified by IAPMO R&T against NSF/ANSI 42 for materials safety requirements only and NSF/ANSI 372 for low lead content.

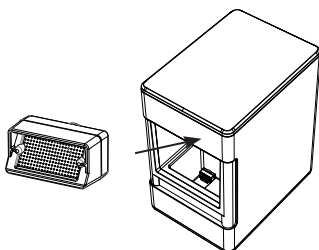
Replacement

Replace filter every 3 months or 40 gallons of water.

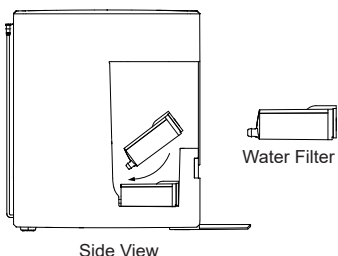
READ AND SAVE THESE INSTRUCTIONS

Installation for OPAL01GEPKT and XPIO Models

1. Remove the water reservoir's screened intake cap by lifting up.

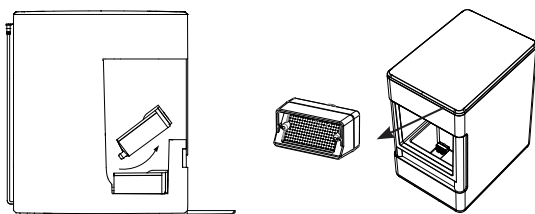


2. Insert the nozzle end of the filter into the opening and rotate down until you hear and feel a snap.



Filter Removal

The filter is easier to remove if you rotate it towards you by the fin on top. Install the new filter as shown above or return the reservoir intake cap as shown below.

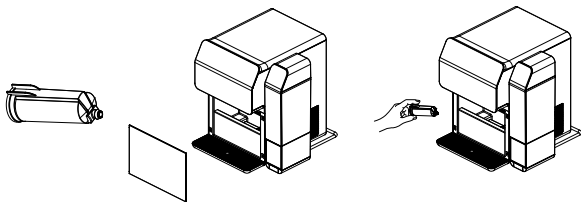


Installation for P4INDOS6RBB

1. Remove the included screen from the ice machine. Make sure the filter is positioned with the "Fins" up.



2. Using two right-hand fingers to hold the Fins, slide the nozzle end of the filter into the hole located at the back, left-hand side of the lower reservoir.



3. Slide the base of the filter, where your fingers are located, so that it fits against the tab located towards the middle of the backside. Push down into place to ensure the filter is properly assembled into the unit.

Filter Removal

To remove the water filter, twist the filter toward you and lift. The filter should be replaced every 3 months or 40 gallons of water.



GE Appliances, a Haier *company*
Appliances Park
Louisville, KY 40225
1-877-959-8688