

D-Link Quick Installation Guide

This product can be set up using any current web browser, i.e., Internet Explorer 5x, Netscape Navigator 4x.







DI-604
Express Ethernet™
Broadband Router


Before You Begin

1. If you purchased this router to share your high-speed Internet connection with other computers, you must have either an Ethernet-based Cable or a DSL modem with an established Internet account from an Internet Service Provider (ISP).
2. It's best to use the same computer that is connected to your modem for configuring the DI-604 router. The DI-604 Router acts as a DHCP server and will assign all the necessary IP address information on your network. **See Appendix at the end of this Quick Installation Guide or the Manual on the CD-ROM for setting each network adapter to automatically obtain an IP address.**

Check Your Package Contents

These are the items included with your DI-604 purchase:

	• DI-604 Ethernet Broadband Router
	• CD-ROM (containing Manual and Warranty)
	• Ethernet (CAT5 UTP/Straight-Through) Cable
	• 5V DC, 2A Power Adapter



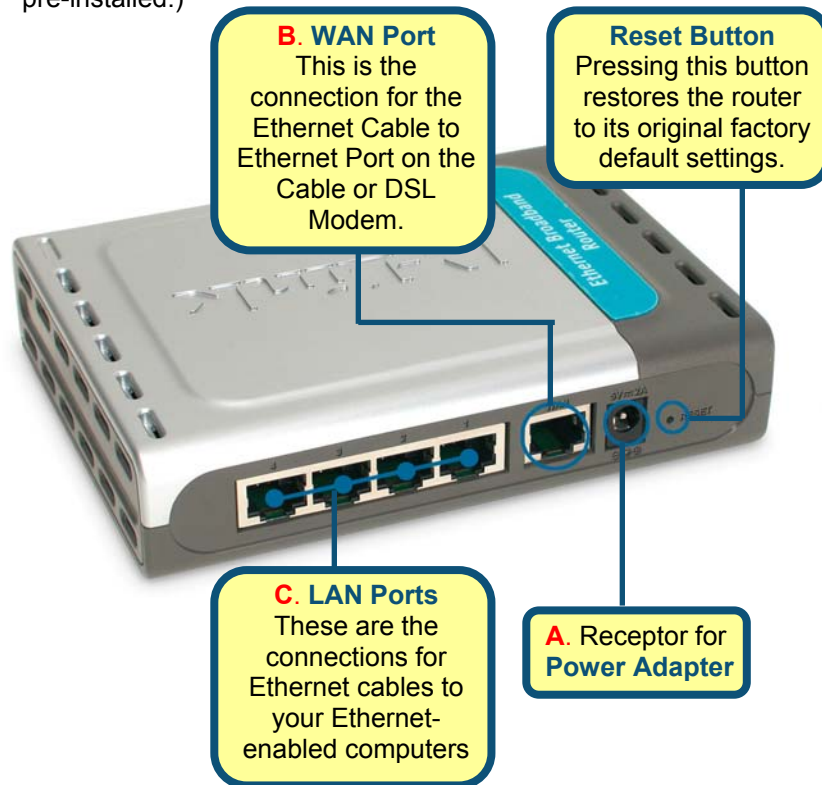
Using a power supply with a different voltage rating will damage and void the warranty for this product.

If any of the above items are missing, please contact your reseller.

1

Connecting The DI-604 Broadband Router To Your Network

- A.** First, connect the power adapter to the **receptor** at the back panel of the DI-604 and then plug the other end of the power adapter to a wall outlet or power strip. The Power LED will turn **ON** to indicate proper operation.
- B.** Insert one end of an Ethernet cable to the **WAN port** on the back panel of the DI-604 and the other end to the Ethernet port located on your Cable or DSL modem. The WAN LED light will illuminate to indicate proper connection.
- C.** Insert one end of an Ethernet cable to **LAN port 1** on the back panel of the DI-604 and the other end to an available Ethernet port on the network adapter in the computer you will use to configure the DI-604. The LED light for LAN Port 1 will illuminate to indicate proper connection. (Note: Some computers already have network adapters pre-installed.)



2

Restart Your Computer

3

Connecting Additional Computers To The DI-604 Broadband Router

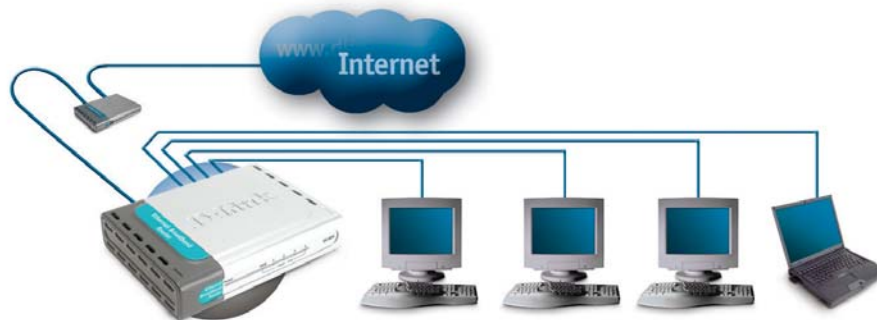
Using additional Ethernet (CAT5 UTP/Straight-Through) cables, connect your Ethernet-equipped computer(s) to one of the 3 remaining Ethernet LAN ports on the back panel of the DI-604.



LAN Port LEDs. Each of the LAN ports on the back of the DI-604 have a corresponding LED light on the front panel of the unit. When a proper connection has been made to a computer that is ON, the LED on the front panel should illuminate.

When you have completed the steps in this *Quick Installation Guide*, your connected network should look similar to this:

Cable or DSL Modem

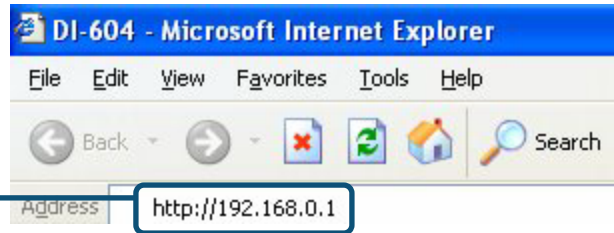


DI-604 Ethernet Broadband Router

Computers connected to the LAN Ports

4 Using The Setup Wizard

Open your Web browser and type "http://192.168.0.1" into the URL address box. Then press the Enter or Return key.



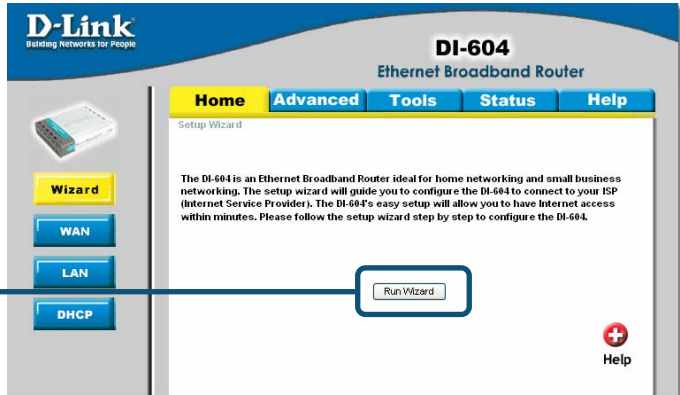
The logon pop-up screen will appear.

Type "admin" for the username and leave the password field blank.



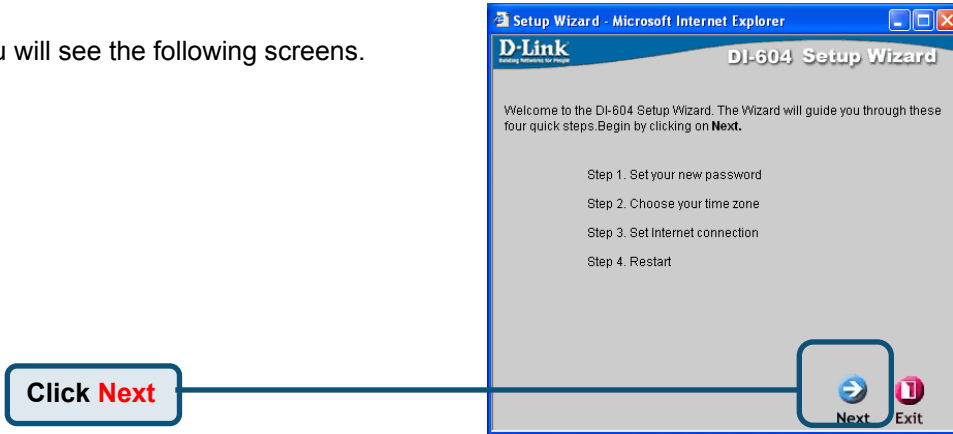
Click OK

Once you have logged in, the Home screen will appear.

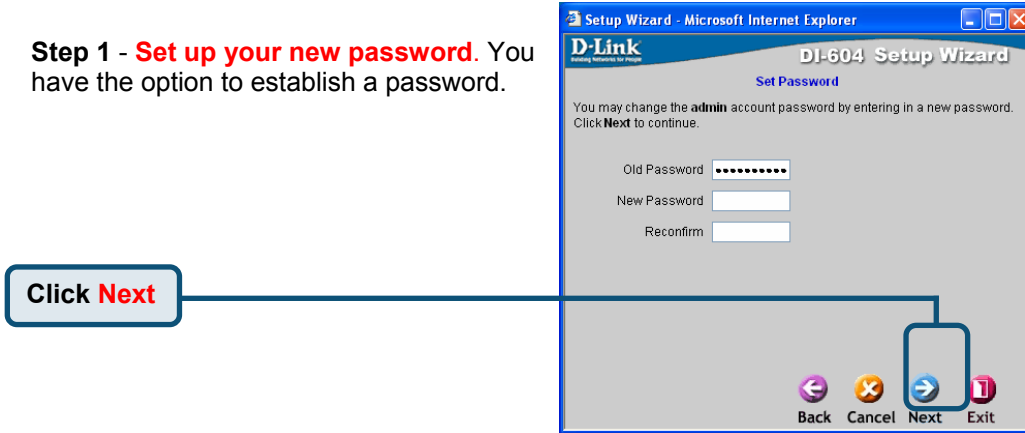


Click Run Wizard

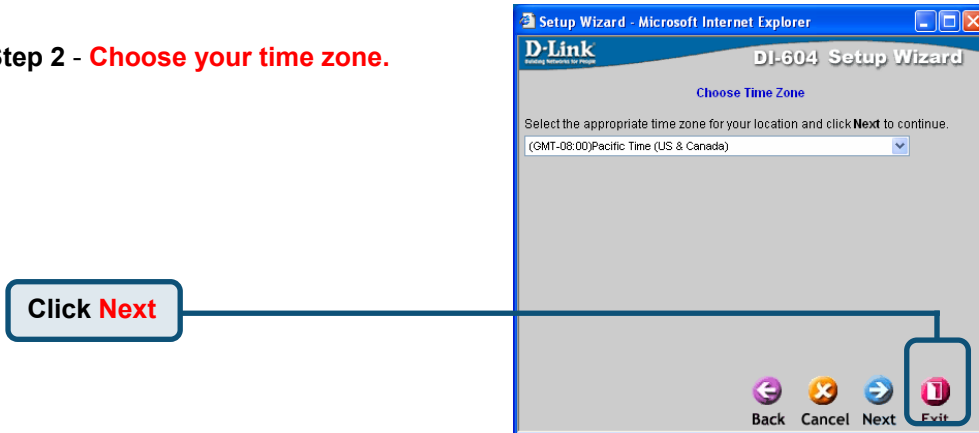
You will see the following screens.



Step 1 - Set up your new password. You have the option to establish a password.



Step 2 - Choose your time zone.



4

The Setup Wizard (continued)

Select the type of Internet connection for your router.

Select one of these settings

Click Next

If you are unsure of which setting to select, please contact your Internet Service Provider.

If you selected **Dynamic IP Address**, this screen will appear:

Click the "Clone MAC Address" button to automatically copy the MAC address of the network adapter in your computer. You can also manually type in the MAC address.

What is a MAC address? Each network adapter has a discrete Media Access Control (MAC) address. Note that some computers and peripherals may already include built-in network adapters.

Click Next

If your ISP requires a **Static IP Address**, and this option is selected, then this screen will appear:

Enter the IP address information originally provided to you by your ISP. You will need to complete all the required fields.

Setup Wizard - Microsoft Internet Explorer
D-Link
DI-604 Setup Wizard
Set Static IP Address
Enter in the static IP information provided to you by your ISP. Click **Next** to continue.

WAN IP Address 0.0.0.0
WAN Subnet Mask 0.0.0.0
WAN Gateway 0.0.0.0
Primary DNS 0.0.0.0
Secondary DNS 0.0.0.0

Do not use the numbers displayed in these fields. They are only shown as an example.

Back Cancel Next Exit

Click **Next**

If your ISP uses **PPPoE** (Point-to-Point Protocol over Ethernet) and this option is selected, then this screen will appear:

Please be sure to remove any existing PPPoE client software installed on your computers.

Enter in the username and password provided to you by your ISP.

Setup Wizard - Microsoft Internet Explorer
D-Link
DI-604 Setup Wizard
Set PPPoE
The service name is optional but may be required by your ISP. Click **Next** to continue.

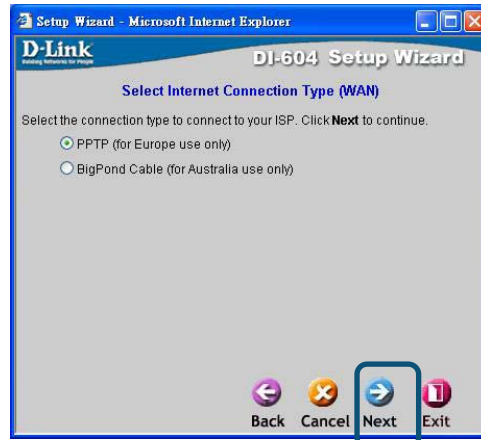
PPPoE Account
PPPoE Password
Retype Password
PPPoE Service Name (optional)

Back Cancel Next Exit

Click **Next**

If your ISP uses **Others (PPTP and BigPond Cable)** and this option is selected, then this screen will appear

Select the WAN type provided to you by your ISP.



Click **Next**

If your ISP uses PPTP and this option is selected, then this screen will appear

Enter the IP address information originally provided to you by your ISP. You will need to complete all the required fields.

Enter in the account and password provided to you by your ISP.



Click **Next**

If your ISP uses **BigPond Cable** and this option is selected, then this screen will appear

Enter in the account and password provided to you by your ISP.

Setup Wizard - Microsoft Internet Explorer

D-Link
DI-604 Setup Wizard

Set Dynamic IP Address for BigPond Cable

Account

Password

Retype Password

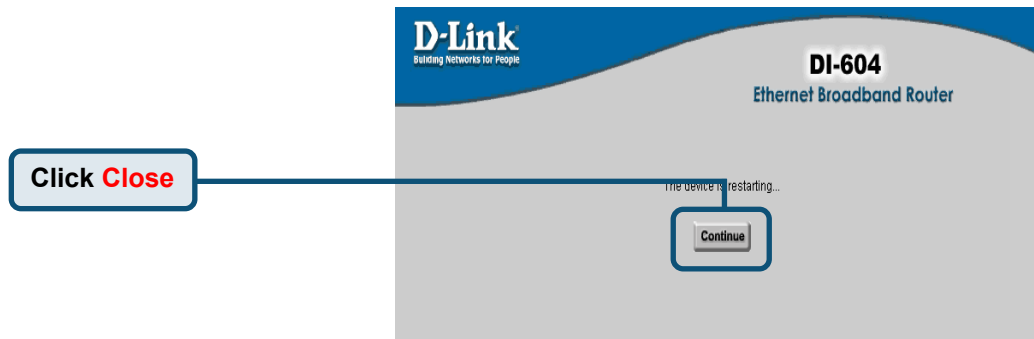
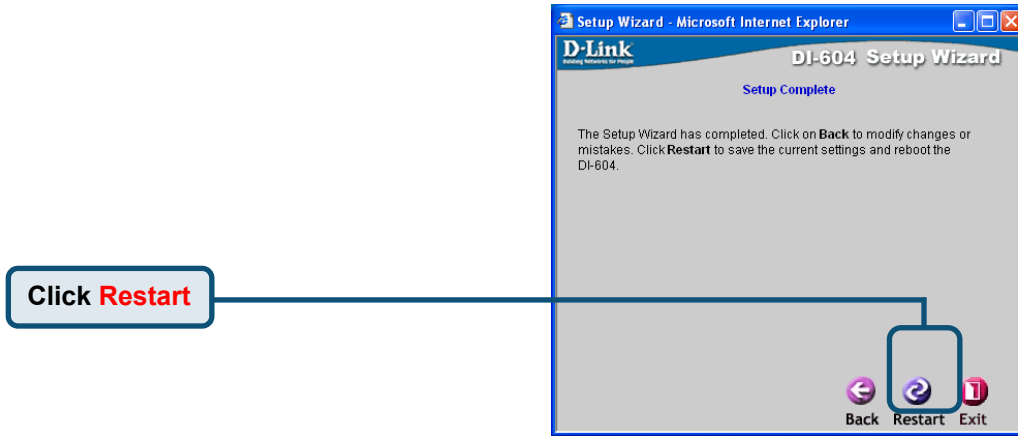
Login Server (optional)

Back Cancel Next Exit

Click **Next**

5

Your Setup is Complete!



You will be returned to the **Home** tab.

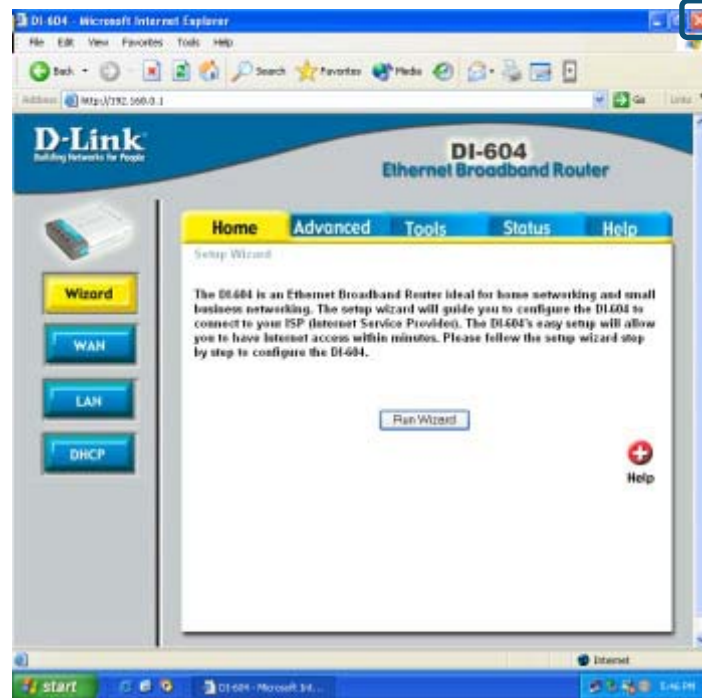
6

Test Your Internet Connection

Click **Exit**

Relaunch your Web browser (i.e., *Internet Explorer* or *Netscape Navigator*), to link to your favorite Web site to test your Internet connection.

For additional settings or information, refer to the **Advanced**, **Tools**, or **Status** tabs on the web-management interface; or to the manual located on the CD-ROM.



APPENDIX

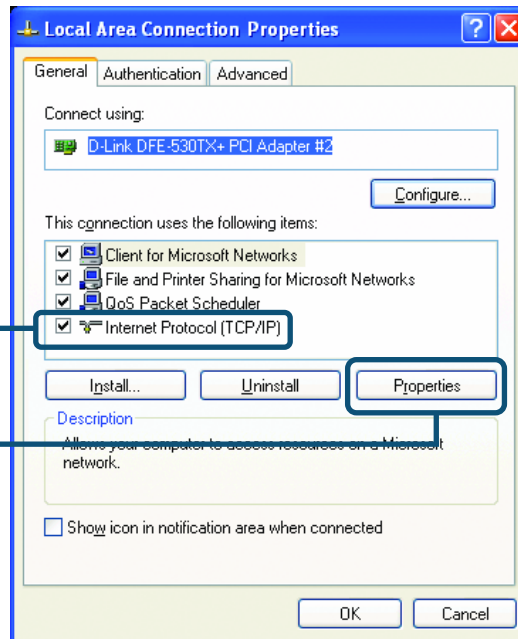
To connect to the network, make sure the network adapter in your computer is configured properly. Here's how to configure the network adapter to obtain an IP address automatically for the DI-604 Broadband Router.

For **Microsoft Windows XP**:
Go to **Start > right click on My Network Places > select Properties > Double-click on the Network Connection** associated with the Ethernet adapter (i.e., D-Link DFE-530TX+).



Click **Internet Protocol (TCP/IP)**

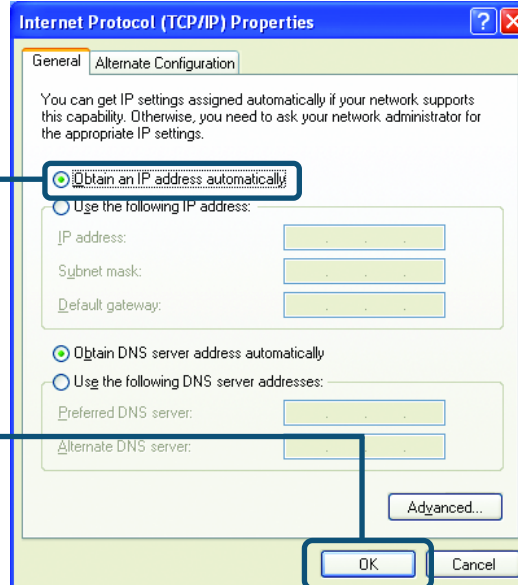
Click **Properties**



Select **Obtain an IP address automatically**

Click **OK**

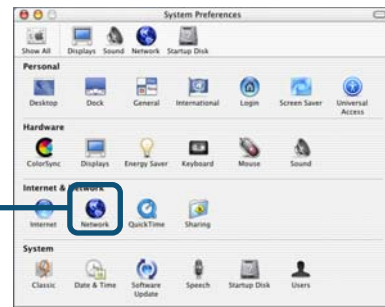
Restart your computer



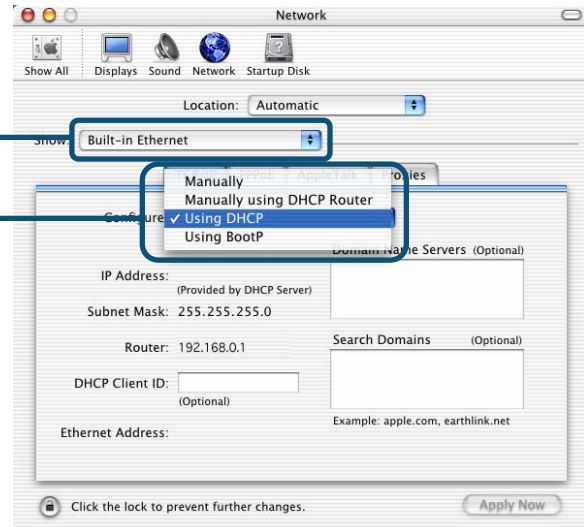
For Apple Macintosh OS X:

Go to the Apple Menu and Select **System Preferences**.

Click on **Network**

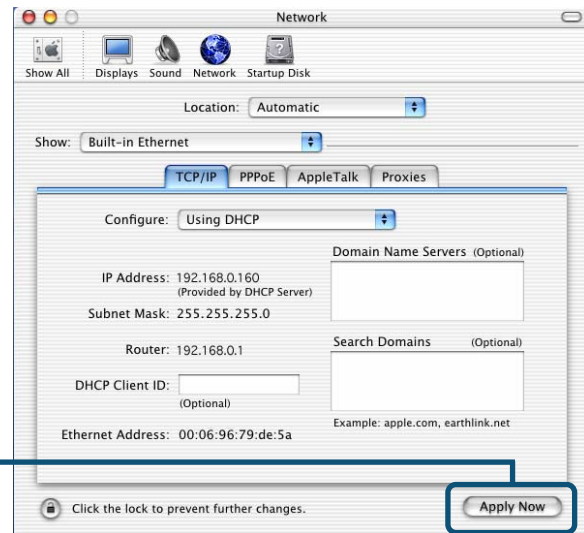


Select **Built-in Ethernet** in the Show pull-down menu



Select **Using DHCP** in the Configure pull-down menu

Click on **Apply Now**



The IP address information, the Subnet Mask, the Router's IP address and the Ethernet adapter address will appear.

Technical Support

You can find the most recent software and user documentation on the **D-Link** website.

D-Link provides free technical support for customers within the United States for the duration of the warranty period on this product.

U.S. customers can contact **D-Link** technical support through our web site or by phone.

D-Link Technical Support over the Telephone:

(877) 453-5465

24 hours a day, seven days a week

D-Link Technical Support over the Internet:

<http://support.dlink.com>

email: support@dlink.com

D-Link®
Building Networks for People