

D-Link Quick Installation Guide

This product can be set up using any current web browser, i.e., Internet Explorer 6 or Netscape Navigator 6.2.3.



DI-604

Express EtherNetwork™
Broadband Router

Before You Begin

1. If you purchased this router to share your high-speed Internet connection with other computers, you must have either an Ethernet-based Cable or a DSL modem with an established Internet account from an Internet Service Provider (ISP).
2. It's best to use the same computer that is connected to your modem for configuring the DI-604 router. The DI-604 Router acts as a DHCP server and will assign all the necessary IP address information on your network. **See Appendix at the end of this Quick Installation Guide or the Manual on the CD-ROM for setting each network adapter to automatically obtain an IP address.**

Check Your Package Contents

These are the items included with your DI-604 purchase:



DI-604 Ethernet Broadband Router



CD-ROM (containing Manual and Warranty)



Ethernet (Straight Through) Cable



5V 2A DC Power Adapter



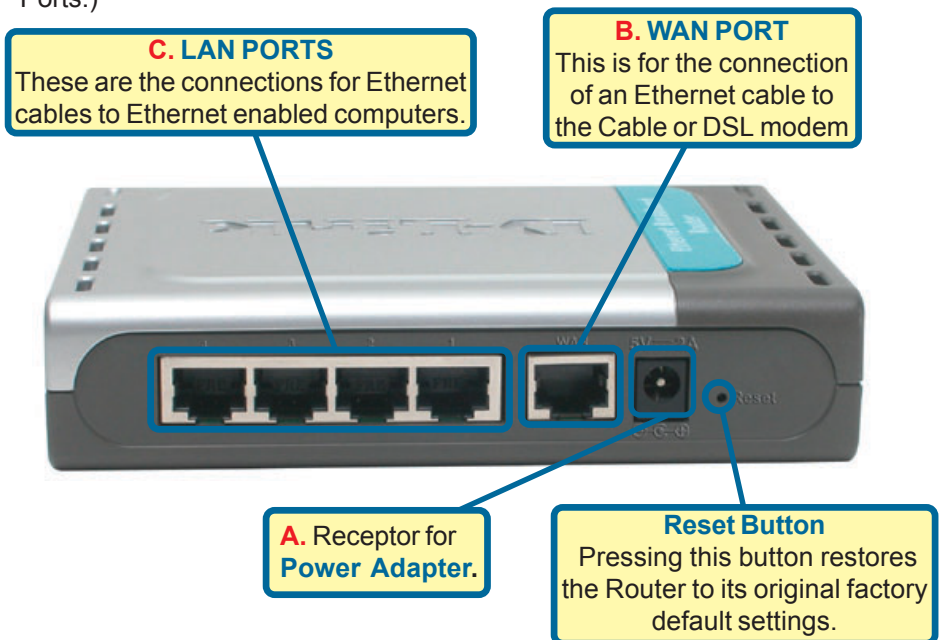
Using a power supply with a different voltage rating will damage and void the warranty of this product.

If any of the above items are missing, please contact your reseller.

1

Connecting The DI-604 Broadband Router To Your Network

- A.** First, connect the power adapter to the **receptor** at the back panel of the DI-604 and then plug the other end of the power adapter to a wall outlet or power strip. The Power LED will turn **ON** to indicate proper operation.
- B.** 1. Power off your Cable or DSL modem; some devices may not have a on/off switch and will require you to unplug the power adapter. Now, the DI-604 should be powered on and the Cable / DSL modem should be turned off.
2. Cable / DSL modem (**Power Off**) – DI-604 (**Power On**)
Connect an Ethernet cable to the Ethernet jack located on the Cable / DSL modem. After the Ethernet cable is securely connected, power on the Cable / DSL modem by turning on the unit or plugging in the power adapter.
3. Cable / DSL modem (**Power On**) – DI-604 (**Power On**)
Insert the other end of the Ethernet cable to the WAN PORT on the back panel of the DI-604. The WAN LED light will illuminate to indicate proper connection. If the WAN LED is not illuminated, please go back to step B and repeat its instructions.
- C.** Insert an Ethernet cable to **LAN port 1** on the back panel of the DI-604 and an available Ethernet port on the network adapter in the computer you will use to configure the DI-604. The LED light for LAN Port 1 will illuminate to indicate proper connection. (Note: The LAN Ports on the DI-604 are Auto-MDI/MDI-X. Meaning you can use a straight-through or crossover-Ethernet cable to the LAN Ports.)



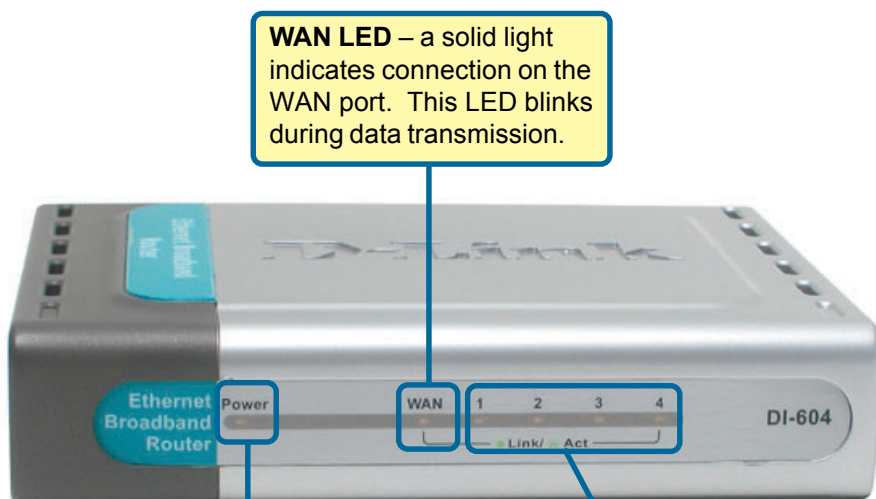
2

Restart Your Computer

3

Connecting Additional Computers To The DI-604

Using additional Ethernet (CAT5 UTP) cables, connect your Ethernet-equipped computers to the remaining Ethernet LAN ports on the back panel of the DI-604.

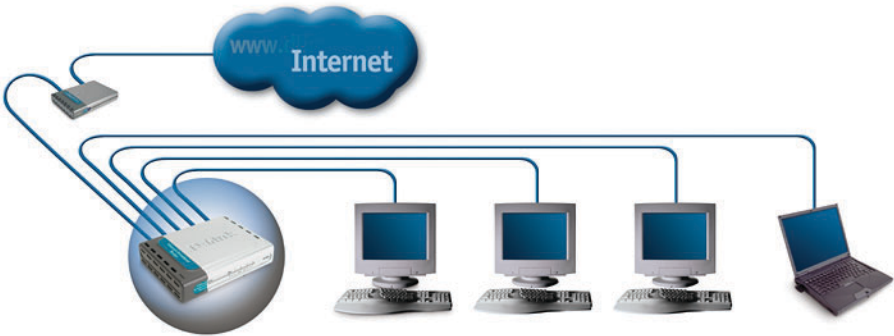


WAN LED – a solid light indicates connection on the WAN port. This LED blinks during data transmission.

POWER LED – a solid light indicates a proper connection to the power supply.

LOCAL NETWORK LEDs – a solid light on the port indicates a connection to an Ethernet enabled computer on ports 1-4. This LED blinks during data transmission.

When you have completed the steps in this *Quick Installation Guide*, your connected network should look similar to this:



4

Using The Setup Wizard

Open your Web browser and type “**http://192.168.0.1**” into the URL address box. Then press the **Enter** or **Return** key.



The logon pop-up screen will appear.

Type “**admin**” for the username and leave the password field blank.

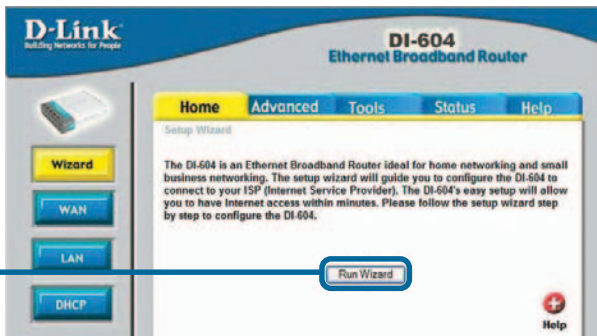


Click **OK**

4

The Setup Wizard (continued)

Once you have logged in, the **Home** screen will appear.



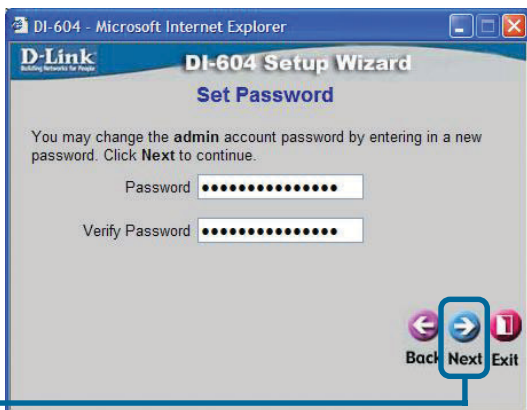
Click **Run Wizard**

You will see the following screens



Click **Next**

Set up your new password. You have the option to establish a password.

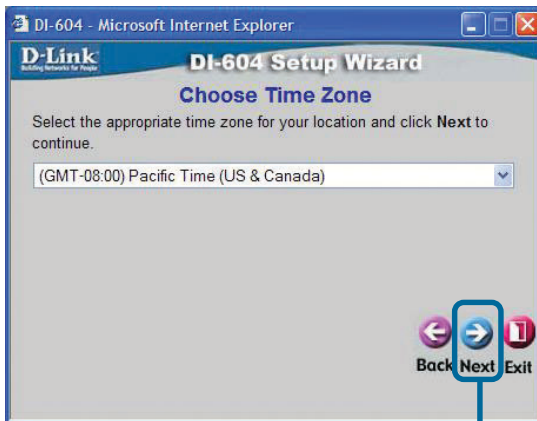


Click **Next**

4

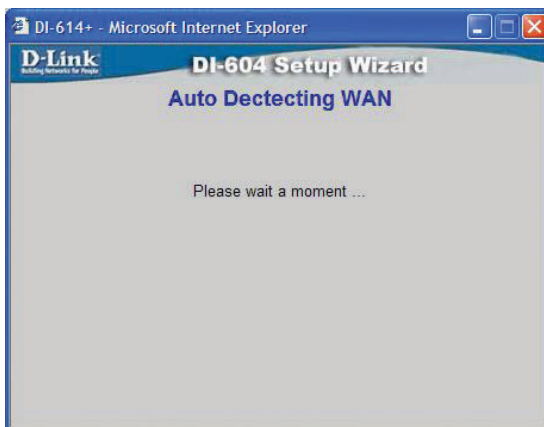
The Setup Wizard (continued)

Choose your time zone from the drop down list.



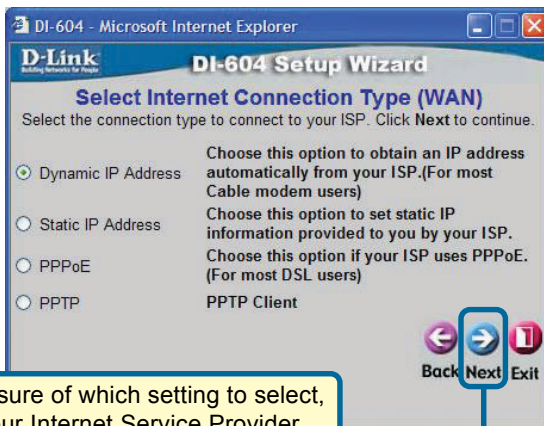
Click Next

A this point, the setup wizard will try to auto-detect your Internet connection type. If you have a Dynamic or PPPoE connection, you will be brought to the corresponding page.



Select your Internet Connection.

You will be prompted to select the type of Internet connection for your router.



! If you are unsure of which setting to select, please contact your Internet Service Provider.

Click Next

4

The Setup Wizard (continued)

If you selected **Dynamic IP Address**, this screen will appear: (Used mainly for Cable Internet service.)

Click the **"Clone MAC Address"** button to automatically copy the MAC address of the network adapter in your computer. You can also manually type in the MAC address.

Click **Next**

DI-604 - Microsoft Internet Explorer

D-Link
Building Networks for People

DI-604 Setup Wizard
Set Dynamic IP Address

If your ISP require you to enter a specific host name or specific MAC address, please enter it in. The **Clone MAC Address** button is used to copy the MAC address of your Ethernet adapter to the DI-604. Click **Next** to continue.

Host Name (optional)

MAC - - - - - (optional)

Warning: This setup should be done on the computer that is registered on the ISP's network.

If your ISP requires a **Static IP Address**, and this option is selected, then this screen will appear:

Enter the IP address information originally provided to you by your ISP. You will need to complete all the required fields.

Click **Next**

DI-604 - Microsoft Internet Explorer

D-Link
Building Networks for People

DI-604 Setup Wizard
Set Static IP Address

Enter in the static IP information provided to you by your ISP. Click **Next** to continue.

WAN IP Address

WAN Subnet Mask

WAN Gateway Address

Primary DNS Address

Secondary DNS Address (optional)

If your ISP uses **PPPoE** (Point-to-Point Protocol over Ethernet), and this option is selected, then this screen will appear: (Used mainly for DSL Internet service.)

Please be sure to remove any existing PPPoE client software installed on your computers.

Enter in the username and password provided to you by your ISP.

Click **Next**

DI-604 - Microsoft Internet Explorer

D-Link
Building Networks for People

DI-604 Setup Wizard
Set PPPoE

The service name is optional but may be required by your ISP. Click **Next** to continue.

User Name

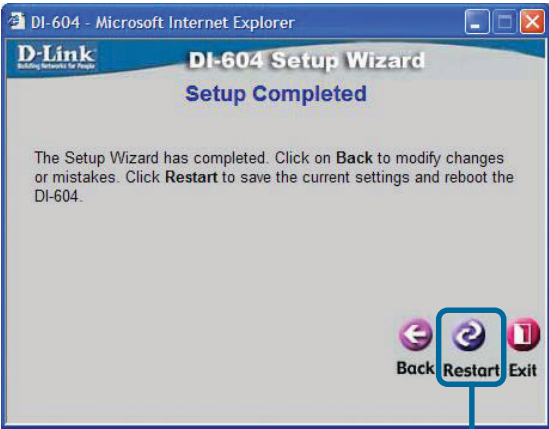
Password

Retype Password

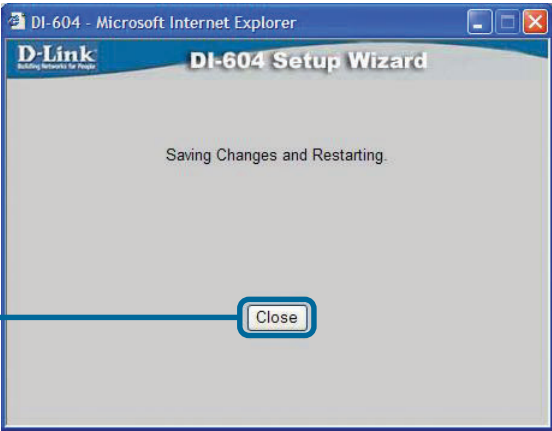
Service Name (optional)

5

Your Setup is Complete!



Click **Restart**



Click **Close**

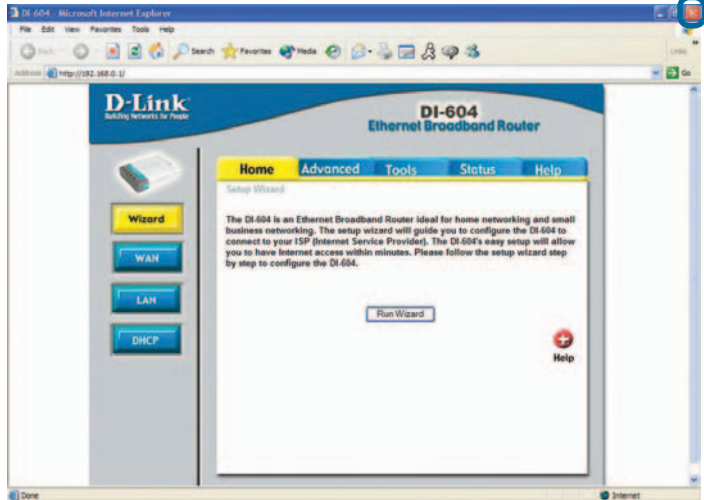
Test Internet Connection.

You will be returned to the **Home** tab.

Click to **Exit**

Then **relaunch** your Web browser (i.e., *Internet Explorer* or *Netscape Navigator*), to link to your favorite Web site to test your Internet connection.

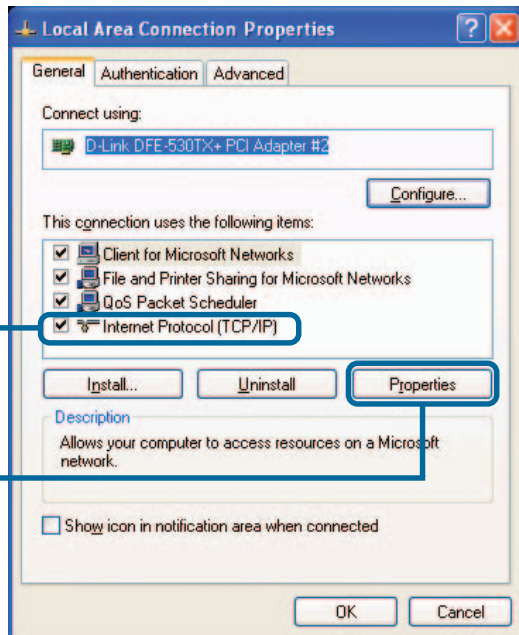
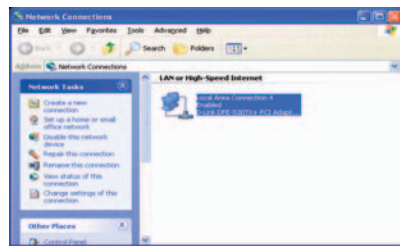
For additional settings or information, refer to the **Advanced**, **Tools**, or **Status** tabs on the web-management interface; or to the Manual located on the CD.



APPENDIX

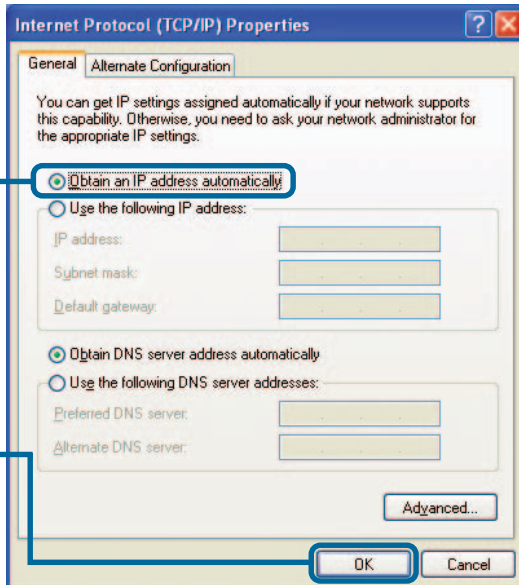
To connect to the network, make sure the network adapter in your computer is configured properly. Here's how to configure the network adapter to obtain an IP address automatically for the DI-604 Broadband Router.

For **Microsoft Windows XP**: Go to **Start** > **right click** on **My Network Places** > select **Properties** > **Right click** on the **Network Connection** associated with the Ethernet adapter and select **Properties** (i.e., D-Link DFE-530TX+).



Click **Internet Protocol (TCP/IP)**

Click **Properties**



Select **Obtain an IP address automatically**

Click **OK**

Restart your computer

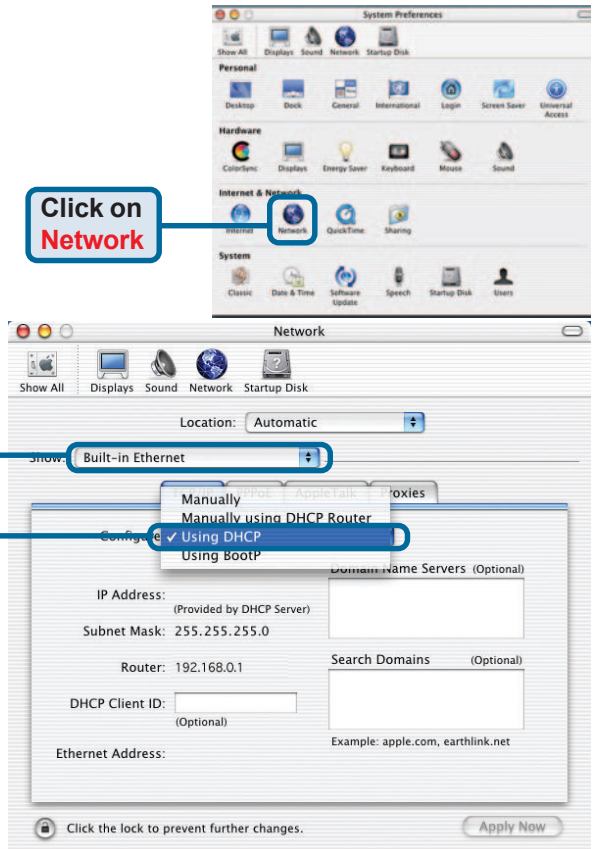
For **Apple Macintosh OS X**:

Go to the **Apple Menu** Click on **System Preferences** and Select **Network**

Click on **Network**

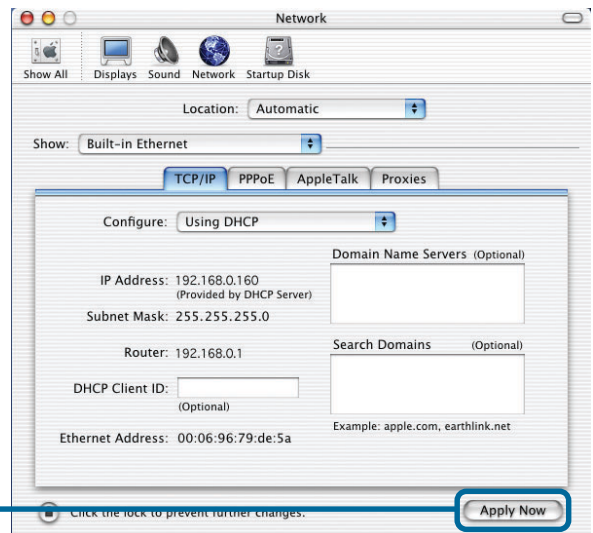
Select **Built-in Ethernet** in the show pull down menu

Select **Using DHCP** in the Configure pull down menu



Click on **Apply Now**

The IP address information, the Subnet Mask, the Router's IP address and the Ethernet adapter address will appear



Technical Support

You can find software updates and user documentation on the D-Link website.

D-Link provides free technical support for customers within Canada for the duration of the warranty period on this product.

Canadian customers can contact D-Link technical support through our website, or by phone.

Tech Support for customers within Canada:

D-Link Technical Support over the Telephone:

(800) 361-5265

Monday to Friday 7:30am to 3:00am ET

Saturday and Sunday 9:00am to 12:00am ET

D-Link Technical Support over the Telephone: (French)

(800) 361-5265

Monday to Friday 7:30am to 9:00pm ET

D-Link Technical Support over the Internet:

<http://support.dlink.ca>

[email:support@dlink.ca](mailto:support@dlink.ca)

D-Link®
Building Networks for People™