



UniFlood M G2

BVP354 120LED 40K 220V L50 45

22085 lm - 240 W - 4000 K

Philips UniFlood M gen2 is a cost-effective, exterior-rated architectural LED floodlight that's designed for facade, landscape and outdoor flood lighting applications. The robust, modular, rectangular design features highly efficient optics, making it ideal for illuminating everything from multi-storey facades and bridges to landmarks and monuments. ;This LED floodlight is available in white, monochromatic colours, RGB, RGBW and tunable white.It comes with six different spread lenses ranging from narrow spot to wide flood and has DMX512/RDM control option. A truly modular floodlight that gives architects and designers the freedom to explore a wide range of concepts and designs with no limitations.

Warnings and Safety

- For outdoor use only.

Product data

General information	
Lamp colour code	840 neutral white
Driver included	Yes
Optical cover/lens type	GC [Clear glass]
Control interface	-
Connection	Flying leads/wires
Cable	Cable without plug 3-pole
Protection class IEC	Safety class I (I)
Flammability mark	F [For mounting on normally flammable surfaces]
CE mark	CE mark

Operating and electrical

Input Voltage	220 to 240 V
---------------	--------------

Input frequency	50 to 60 Hz
Inrush current	60 A
Power factor (min.)	0.9

Controls and dimming

Dimmable	No
----------	----

Mechanical and housing

Housing material	Aluminum extruded
Optical cover/lens material	Acrylate
Overall length	486 mm
Overall width	304 mm
Overall height	231 mm

UniFlood M G2

Effective projected area	0.156 m ²
Colour	Dark Grey

Approval and application

Ingress protection code	IP66 [Dust penetration-protected, jet-proof]
Mech. impact protection code	IK06 [1 J]

Initial performance (IEC compliant)

Initial luminous flux (system flux)	22085 lm
Luminous flux tolerance	+/-10%
Initial LED luminaire efficacy	92 lm/W
Lamp colour temperature	4000 K
Colour Rendering Index	>80
Initial chromaticity	4 SDCM
Initial input power	240 W
Power consumption tolerance	+/-10%

Application conditions

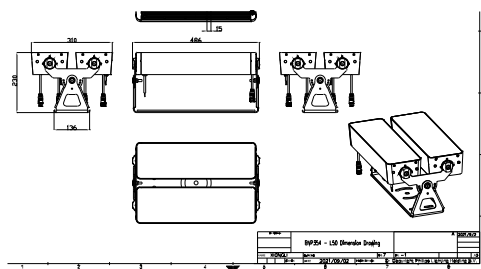
Ambient temperature range	-40 to +50 °C
---------------------------	---------------

Product data

Full product code	871951492852700
Order product name	BVP354 120LED 40K 220V L50 45
EAN/UPC – product	8719514928527
Order code	911401749313
SAP numerator – quantity per pack	1
Numerator – packs per outer box	1
SAP material	911401749313
Net Weight (Piece)	13.000 kg



Dimensional drawing



BVP354 120LED 40K 220V L50 45

