

Job Name

Purchaser

Submitted to

Unit Designation

Location

Engineer

Reference

Approval

Construction

Schedule #

Specifications

|                       |   |                 |   |
|-----------------------|---|-----------------|---|
| Model                 | US Code   |                 | CNH18JDB  |
|                       | Model Number  |                 | AC018BNJDCH/AA                                  |
| Performance           | Nominal Capacity  | Cooling (Btu/h) | 17,000  |
|                       |   | Heating (Btu/h) | 19,000  |
| Power                 | Voltage (øV/Hz)   |                 | 1 / 208-230 / 60                                |
|                       | Nominal Running Current (A)                                       |                 | 0.35  |
| Fan                   | Type  |                 | Turbo (1)                                       |
|                       | Motor   | Type            | BLDC (1)  |
|                       |   | FLA / Output    | 0.35A / 35 W                                    |
| Airflow               | CFM   | L/M/H           | 261 / 297 / 332                                 |
| Refrigerant           | Type  |                 | R410A   |
|                       | Control Method  |                 | Electronic Expansion Valve<br>(at outdoor unit) |
| Piping Connections    | Liquid (flare)  | Inches          | 1/4   |
|                       | Suction (flare)   | Inches          | 1/2   |
|                       | Drain   | Inches          | ID 1  |
| Unit Dimensions       | W X H X D   | Inches          | 28 3/8 X 24 7/16 X 7 13/16                      |
|                       | Weight  | lbs.            | 35.1  |
| Sound Level           | L / M / H   | dB(A)           | 35 / 39 / 42                                    |
| Accessories           | Wired Controllers   | Advanced        | MWR-WG00UN                                      |
|                       |   | Simple Touch    | MWR-SH11UN                                      |
|                       | 24VAC Thermostat Adapter  |                 | MIM-A60UN                                       |
|                       | Wi-Fi Adapter For Remote Control <sup>1</sup>                     |                 | MIM-H04UN                                       |
|                       | External Temperature Sensor                                       |                 | MRW-TA  |
|                       | External Contact Control Interface Module                         |                 | MIM-B14   |
|                       | CN83 Pigtail  |                 | DB39-01263A                                     |
|                       | Line sets - insulated and flared,<br>interconnect cables included |                 | 25' - ILS2507                                   |
| 50' - ILS5007         |   |                 |   |
| Safety Certifications |   |                 | ETL (UL 1995)                                   |

Nominal cooling capacities are based on: Indoor temperature: 80 °F DB, 67°F WB. Outdoor temperature: 95°F DB, 75°F WB.  
Nominal heating capacities are based on: Indoor temperature: 70 °F DB, 60°F WB. Outdoor temperature: 47°F DB, 43°F WB.  
Samsung HVAC maintains a policy of ongoing development, specifications are subject to change without notice.

<sup>1</sup> MIM-H04UN is only required for remote control of cassette, console, and duct indoor units. Only one per system is required.



- High-voltage terminal block temperature sensor to disable unit in the event overheating of power connection.
- System energy consumption can be viewed using the Samsung SmartThings mobile app (not revenue grade, for reference only)

Indoor Fan

- Indoor fan is turbo type with a single fan motor
- Three fan speed settings and auto setting
- Washable filter as standard (included)
- The front panel shall have LED indicator lights, touch controls, IR receiver, and 1 motorized louver.
- The unit shall discharge cool air from the upper outlet louver (motorized upper and lower) (manual adjustment only) outlets while in heating mode.

Construction

- Insulated, HIPS chassis certified to UL94 V0

Controls

- Control wiring shall be 2 X 16 AWG
- The unit shall be operated via a wireless or wired remote control with DDC type signal
- Dual set temperature support when connected to MWR-WG00UN Advanced Wired Controller or central control options.
- Wired controllers must be purchased separately
- The unit shall ship with a wireless controller, holder, and batteries.

Refrigerant System

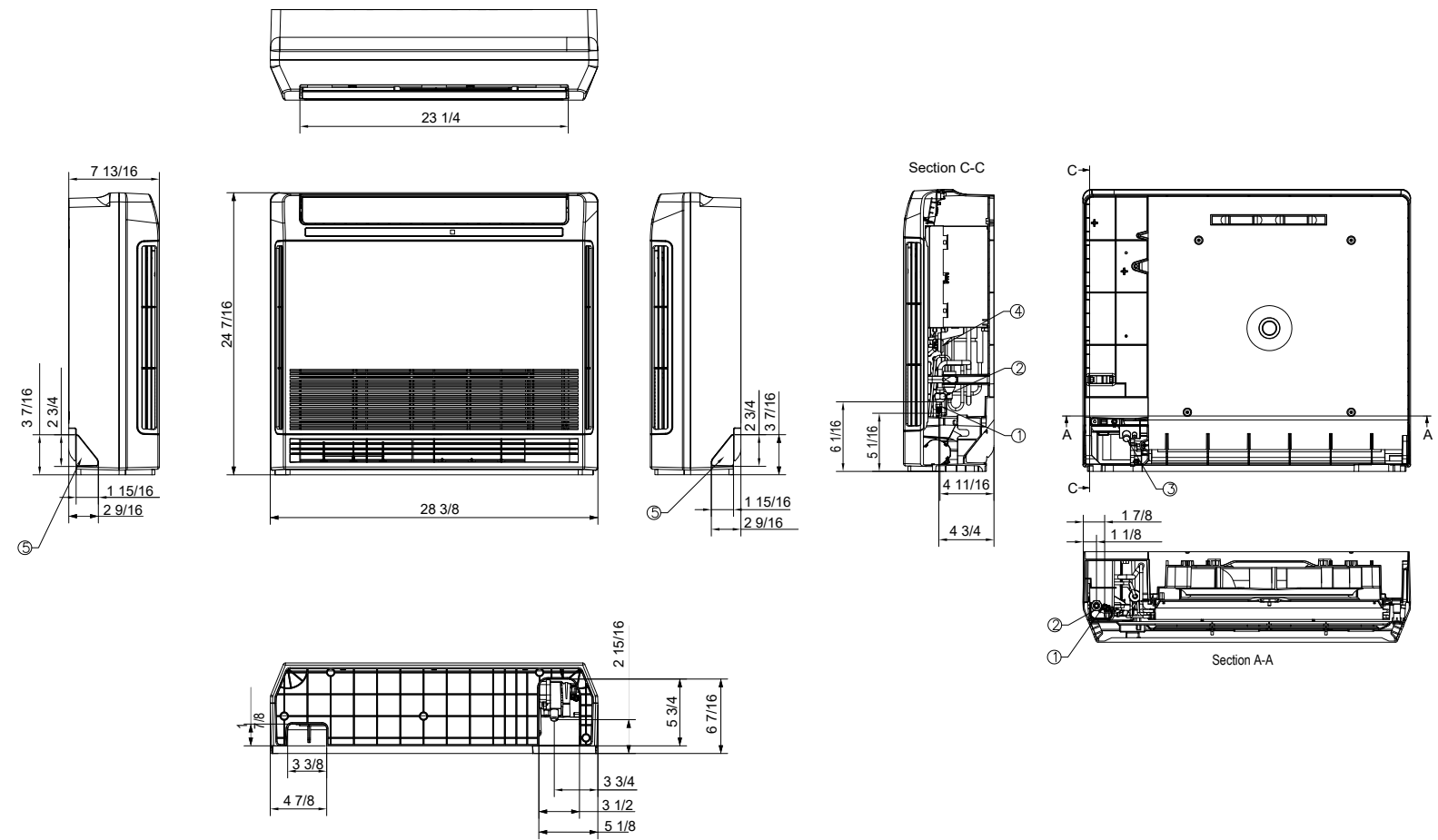
- Refrigerant flow shall be controlled by an electronic expansion valve at outdoor unit

Warranty

10 Years compressor, 10 years parts, 1 year limited labor when registered

Compatibility

Will only operate with Samsung outdoor unit model numbers:  
AC018BXADCH/AA (CXH18ADB), AJ024BXJ3CH/AA (JXH24J3B), AJ036BXJ4CH/AA (JXH36J4B), AJ048BXJ5CH/AA (JXH48J5B), AJ024BXS4CH/AA (JXH24S4B), AJ030BXS4CH/AA (JXH30S4B), AJ036BXJ4CH/AA (JXH36J4B), AJ036BXS4CH/AA (JXH36S4B), AJ048BXJ5CH/AA (JXH48J5B)



| No. | Description                 |
|-----|-----------------------------|
| 1   | Liquid pipe connection      |
| 2   | Suction pipe connection     |
| 3   | Drain connection            |
| 4   | Power and comm.wire conduit |
| 5   | Drain Knockout              |

Note: Actual appearance may vary.