



# BEVERAGE-AIR®

Project: \_\_\_\_\_  
Item: \_\_\_\_\_  
Location: \_\_\_\_\_  
Approved: \_\_\_\_\_

AIA#

SIS#

WTF20HC WORKTOP FREEZER

## SHALLOW DEPTH WORKTOP

WTF20HC Solid Door With Foamed-In Place Backsplash  
Hydrocarbon Series

MODEL:  
WTF20HC-FIP



**3 Year Parts/Labor Warranty**  
**Additional 4 Year Compressor Warranty**

### CABINET CONSTRUCTION

- Stainless steel front, sides, door and grille (galvanized back & bottom)
- Interior liner is made of corrosion resistant aluminum
- Stainless steel top for added durability
- Foamed-in place backsplash
- Full electronic control
- Interior thermometer is standard
- Self-closing door with 120° stay-open feature, on cartridge style hinges
- Door opening includes low wattage, anti-condensate heaters
- Magnetic gasket attached to each door for positive seal
- 6" Casters, two (2) with brakes standard
- Two (2) epoxy-coated steel wire shelves
- Field-reversible door (hinge kit not included)

### OPTIONS & ACCESSORIES

- Stainless steel back
- Stainless steel interior
- 16 Gauge stainless steel top
- Additional shelves
- Shelf clips
- Glass door option
- Right or left hinged door
- Locks (solid doors only)
- Bun rack
- Wire shelf divider
- 3" Casters
- 6" Legs (stainless steel, black or seismic/flange)
- Low profile casters
- Roller kit
- Remote option\* (see note on back on page)

### REFRIGERATION SYSTEM

- Uses environmentally friendly, energy efficient R290 refrigerant, and meets all regulatory requirements for CARB, SNAP, DOE & more
- Adaptive defrost
- Epoxy coated evaporator coil
- Freezers capable of maintaining product temperature of -10°F



Please verify qualifying units by visiting:  
[www.energystar.gov/cfs](http://www.energystar.gov/cfs)

3779 Champion Blvd., Winston-Salem, NC 27105  
1-888-845-9800 Fax: 1-336-245-6453  
Beverage-Air.com Sales@bevair.com



# BEVERAGE-AIR®

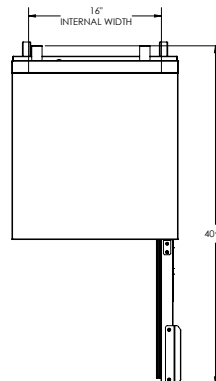
| MODEL                              | WTF20HC-FIP   |
|------------------------------------|---------------|
| <b>EXTERNAL DIMENSIONAL DATA</b>   |               |
| Width Overall                      | 20"           |
| Depth Overall with Handle & Bumper | 24 ½"         |
| Height Overall with 6" Casters     | 36 ½"         |
| Number of Doors                    | 1             |
| Depth with Door Open 90°           | 40 ¾"         |
| Door Opening                       | 15 ⅝" x 18 ⅛" |
| <b>INTERNAL DIMENSIONAL DATA</b>   |               |
| NET Capacity (cubic ft.)           | 2.34          |
| Internal Width Overall (in)        | 16"           |
| Internal Depth Overall (in)        | 8 ¼"          |
| Internal Height Overall (in)       | 19 ½"         |
| Number of Shelves                  | 2             |
| <b>ELECTRICAL DATA</b>             |               |
| Full Load Amperes                  | 2.5           |
| <b>REFRIGERATION DATA</b>          |               |
| Horsepower                         | 1/4           |
| Capacity (BTU/Hr)                  | 857           |
| Heat Rejection (BTU/Hr)            | 1285.5        |
| Charge (lbs/grams)                 | 0.21/95       |
| <b>SHIPPING DATA</b>               |               |
| Gross Weight - Crated              | 134 lbs       |
| Height - Crated                    | 35"           |
| Width - Crated                     | 23"           |
| Depth - Crated                     | 26"           |

\*NOTE: Remote units are field wired and come with 6" legs.  
Refrigerant must be specified at time of order.

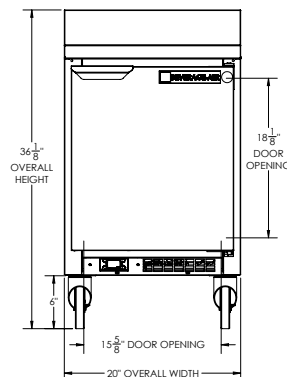
## Worktop Freezer - Shallow Depth Model: WTF20HC-FIP

### Model Views

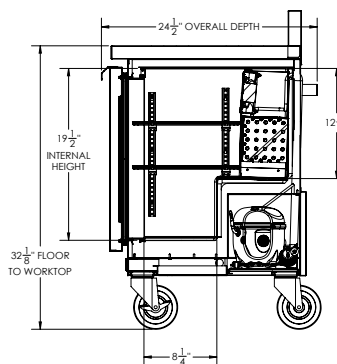
Required Clearance: 3 3/16" bottom & 2" rear



### PLAN VIEW



### ELEVATION VIEW



### SIDE VIEW

### ELECTRICAL CONNECTION



115/60/1  
NEMA 5-15P

Unit pre-wired at  
factory and include 8'  
long cord and plug set.



3779 Champion Blvd., Winston-Salem, NC 27105 1-888-845-9800 Fax: 1-336-245-6453 Beverage-Air.com Sales@bevoir.com

an Ali Group Company



The Spirit of Excellence