



POWERED BY RemoteLOCK



keyincloud.com



KeyInCloud

The laptop screen displays the following data:

Lock Power Ratings

Rating	Value
Critical	13
Low	0
Good	0

Access Events

Line graph showing access events from 7 Mon to 14 Mon. Legend: Locked (red), Unlocked (green), Access Denied (yellow).

System Status

NO ISSUES

Front Door (15:51)

LOCKED

Garage Door (15:51)

LOCKED

ACCESS USED

Name	Credential	Department	Action
Anthony Cortez	PIN: 8371	Marketing	LOCKED
Jerma Carter	PIN: 712924	Maintenance	LOCKED
Jim Bow	PIN: 954926	Operations	LOCKED
Randy Anderson	PIN: 204821	Maintenance	LOCKED
Sara Patric	PIN: 2447	Sales	LOCKED

ACCESS DENIED

Empty list.

The smartphone screen displays the following data:

123 Walnut St.

Devices

- Main Entrance OpenEdge BG: LOCKED
- Unit 345 OpenEdge RG: LOCKED
- Unit 347 OpenEdge RG: LOCKED

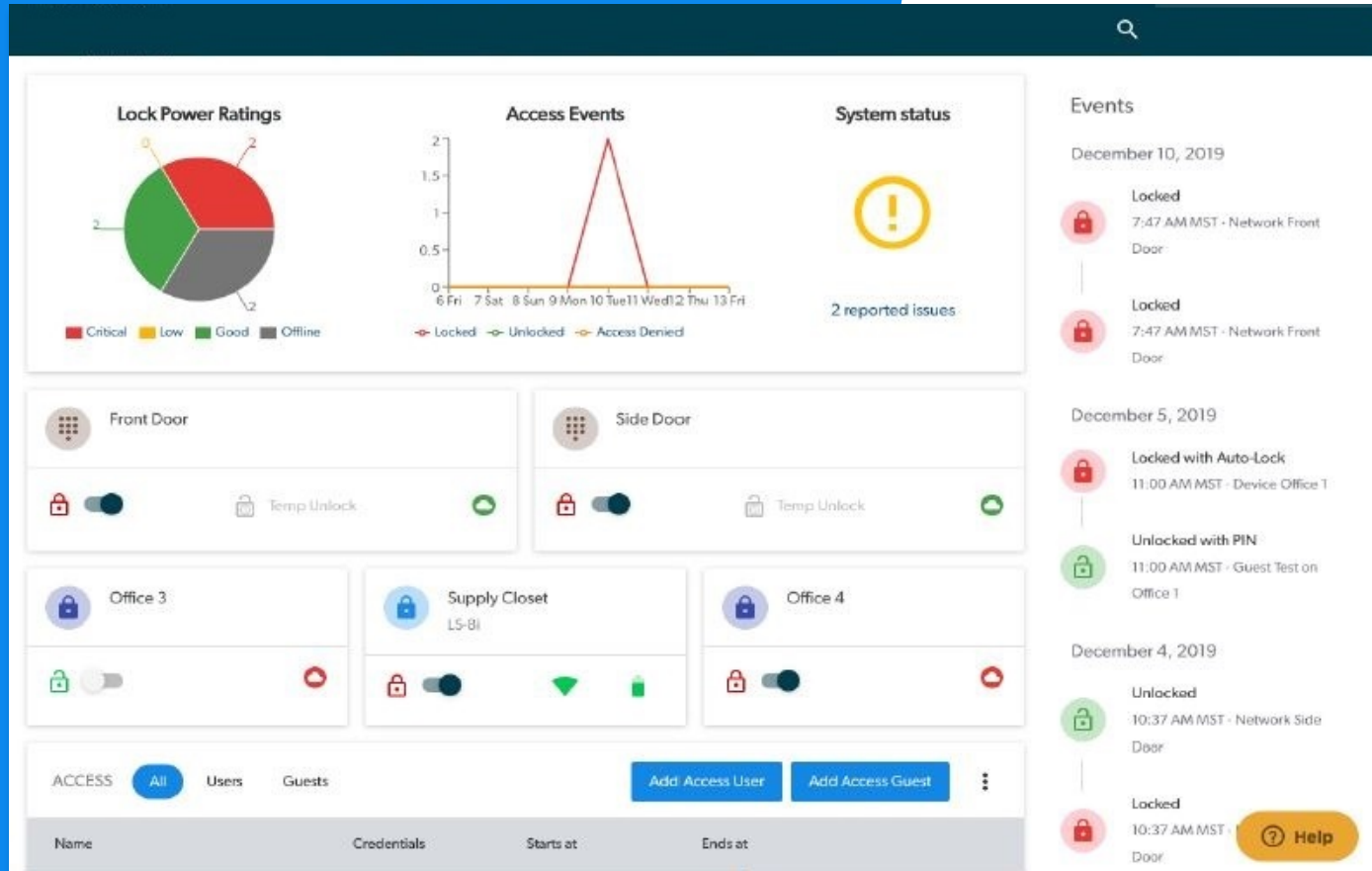
Events

- lock 8:25
- unlock 8:27
- lock 8:28
- unlock 8:28
- lock 8:28
- unlock 8:28
- lock 12:18
- lock 12:19
- unlock 12:18 AM - Someone on Front Door
- Access Denied with PIN 12:16 AM - Someone on Front Door
- Unlocked with Keob 12:07 AM - Someone on Garage Door
- locked with Auto lock 12:06 AM - Device Garage Door

POWERED BY
RemotelOCK

The ultimate platform for cloud-based access.

Centralized Dashboard



- ✓ Quick to learn and easy to use.
- ✓ Remote control from anywhere.
- ✓ Automate access for short-term guests.
- ✓ Scales to thousands of locks and users.
- ✓ Manage multiple properties.

Features Overview

✓ Centralized User Management

View and manage all access users across all your locks in a single view.

✓ Mass User Management

Grant or revoke access to multiple locks in a single step, instead of one lock at a time.

✓ Guest Code Functionality

Provide self-expiring access codes for temporary guests and maintenance.

✓ Advanced Account Permissions

Grant employees permission to manage specific locations and doors or allow tenants to control their residential door.

✓ Access & Device Schedules

Create schedules and limit employee access to specified times or days of the week.

✓ Short-term Booking Integrations

Automate short-term access by integrating with Airbnb, HomeAway and other booking partners.

✓ Full-featured Notification Management

Set up alerts for specific events including low battery warnings and unlocks.

✓ Advanced Reporting

Filter access logs across all your locks, view administrator logs and export reports.



Yale Assure Lever-set

with Yale Access Module and BLE Gateway

Secure your home with this Yale Real Living electronic lock and enjoy the convenience of unlocking and locking your door using the backlit touchscreen keypad; you'll never have to carry around your keys again.

SKU: YRL226-CBA-(colors 619, 605, or OBP)

Door Specifications

- **Face Bore:** 2 1/8"
- **Edge Bore:** 1"
- **Backset:** 2 3/8" or 2 3/4" (adjustable latch)
- **Door Thickness:** 1 3/4" to 2 1/4" * *1 3/8" requires special order thin door kit
- **Strike:** 1 1/8" x 2 3/4"
- **Strike Front:** Round Corner
- **Keyway:** KW-1 5 Pin (keyed models come with 2 keys) – Key-Free YRL236
- **Batteries:** 4 AA Alkaline Batteries (Included)
- **Handing:** Self-handing
- **Grade:** Tested to ANSI/BHMA Grade 2
- **YRL226 Exterior:** 1 3/8" L x 2 3/4" W x 6 1/16" H – Handle 4-1/4"
- **YRL226 Interior:** 2 1/8" L x 3" W x 6 7/8" H – Handle 4-14"





Yale Security nexTouch Cylindrical Lever

with Yale Access Module and BLE Gateway

SKU: NTB620-CBA (colors 626 and OBP)

Door Specifications:

- **Function:** Electronic Keyless Lock Entry with Key Override
- **Backset:** 2-3/4" (70mm) standard backset
- **Door Thickness:** 1-3/4" (44mm) door thickness standard
- **Handing:** Field reversible
- **Latch:** Cylindrical 1/2" latch length, Latch Front Size 2-1/4" x 1-1/8"
- **Cylinder:** Yale Commercial SFIC
- **Environmental Specifications:** Operating temperature: -40°F to +140°F (-40°C to +60°C)
- **Power Source:** 4 AA alkaline batteries (included) with optional hardwire input for 9VDC external power; 9V battery power backup on keypad
- **Weather Resistant:** Yes
- **ANSI/BHMA:** Certified ANSI/BHMA Grade 1
- **Interface:** Capacitive touchscreen
- **User Codes:** Up to 500 unique user codes

UL/cUL:

Functions are UL - cUL Fire Listed for use on fire doors having a rating up to and including 3-hours



Touchscreen
Augusta Lever as s





Yale Access Module

with BLE Gateway

Connected by Yale Access Locks/Levers and Kits come with the Connect BLE Bridge so you can lock and unlock from anywhere using your Yale Access app from anywhere – The Yale Access Gateway is the locks connection to the internet in order to remotely control your Yale Lock and required to use the KeyinCloud Software



Yale Access App Features:

Comes with DoorSense - Know if your door is not only locked or unlocked by also closed or opened.

Dimensions: 2.4" H x 1.5" D

Inside the Yale Access Upgrade Kit Box:

- Yale Access Module
- Connect Wi-Fi Bridge
- DoorSense

Requirements:

- Yale Access app from App Store or Google Play Store
- 802.11 b/g/n (2.4GHz) Wi-Fi Network
- Yale Connect Wi-Fi Bridge required for away from home access
- Bridge requires a standard North American outlet





Yale Access Modules

Replacements



SKU: AYR202-CBA-KIT



SKU: AUG-AC02



SKU: AYR202-CBA-USA

Connecting Yale Assure Devices via Yale Access to the Internet



+
Locks Pairs to Gateway via BLE



⚡
Gateway connects to Internet via Wi-Fi

