

## Product Brochure

2021



Chord Electronics Ltd.



# WELCOME TO THE EXTRAORDINARY

---

Welcome to Chord Electronics, an extraordinary breed of hi-fi, of sound-producing devices where music, no matter what its origins, is presented in its purest and most unadulterated form. In our pursuit of resolution and absolute clarity, we develop multi-award-winning proprietary processes without compromise; technology at the apogee of its game. It is these very same processes which afford us the ability to question how you can enjoy our products the most. This is why when you experience our designs, they are unapologetically unique: they don't follow convention, they provide extraordinary sound and a mechanical design to suit your lifestyle.





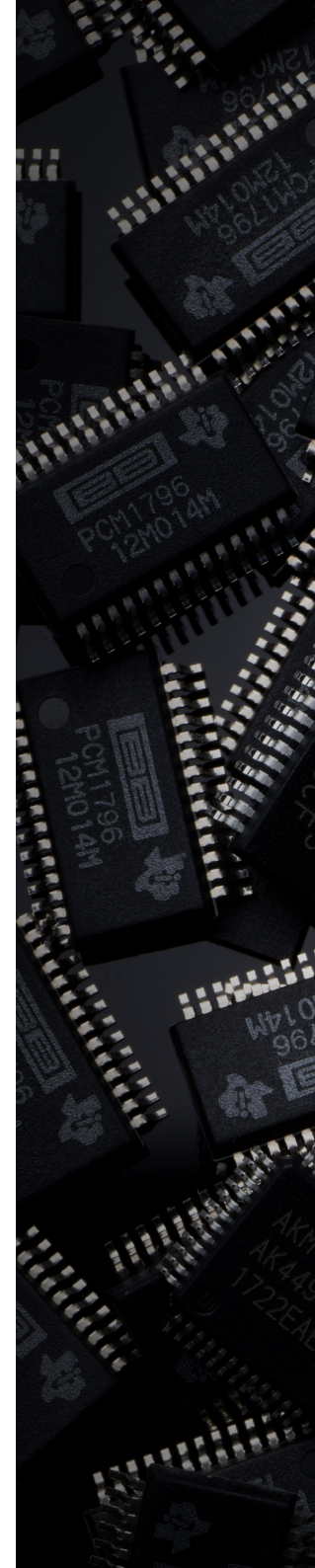
# CUTTING EDGE TECHNOLOGY. MULTI- AWARD-WINNING SOUND.

---

**THE ANALOGUE:** Errors at 30,000ft simply cannot happen. Where safety nets do not exist, electrical engineering for aircraft must only be first-rate. Infallible. However, back in the 1980s where control systems were mostly analogue, engineers had encyclopedic knowledge. One such engineer was John Franks. John was not only a skilled engineer, but a passionate audiophile and knew that there was a clear crossover between avionics and high fidelity.

For his amplifiers, intelligently shielded switch-mode power supplies, able to refill the capacitors at a much faster rate than toroidal transformers, were the only way to reproduce bass frequencies with true precision, and for the amplification devices themselves, the MOSFETs, John worked tirelessly to develop his own unique and utterly transparent devices. Free of distortion and so musical, Chord Electronics' analogue technologies are in a class of their own.

**THE DIGITAL:** Our digital master, Rob Watts, has been designing and perfecting DACs for decades but Rob was not just an engineer he was an audiophile, a surprising rarity amongst the profession. Disappointed by the constant limitations dictated by the package size and the obvious budget restrictions to make a chip a realistic commercial opportunity, he began designing his own using FPGAs, remarkable programmable chips. Restricted only by their physical processing power or 'canvas size', not by design, Rob developed the scalable WTA filter and Pulse Array technologies, and it is these incredible proprietary technologies, protected by military-grade encryption, which extract far more information from the original recording than ever before. As a result, our digital devices are unique, multi-award-winners and have up to 600x the resolving power of a chip DAC.





*John Franks*

Owner and Chief Designer



*Rob Watts*

Digital Consultant



# ABBEEY ROAD METROPOLIS MASTERING SKYWALKER SOUND SONY MUSIC JAPAN AIR STUDIOS

AUDIO ENGINEERS AFFILIATED WITH  
CHORD ELECTRONICS LTD.

GRAMMY AWARD WINNING MASTERING ENGINEER  
**TIM YOUNG**

GRAMMY NOMINATED MUSIC PRODUCER  
**MICHAEL BEINHORN**

GRAMMY NOMINATED MASTERING ENGINEER  
**STUART HAWKES**

BRIT AWARD WINNING PRODUCER AND MIXER  
**MIKE CROSSEY**

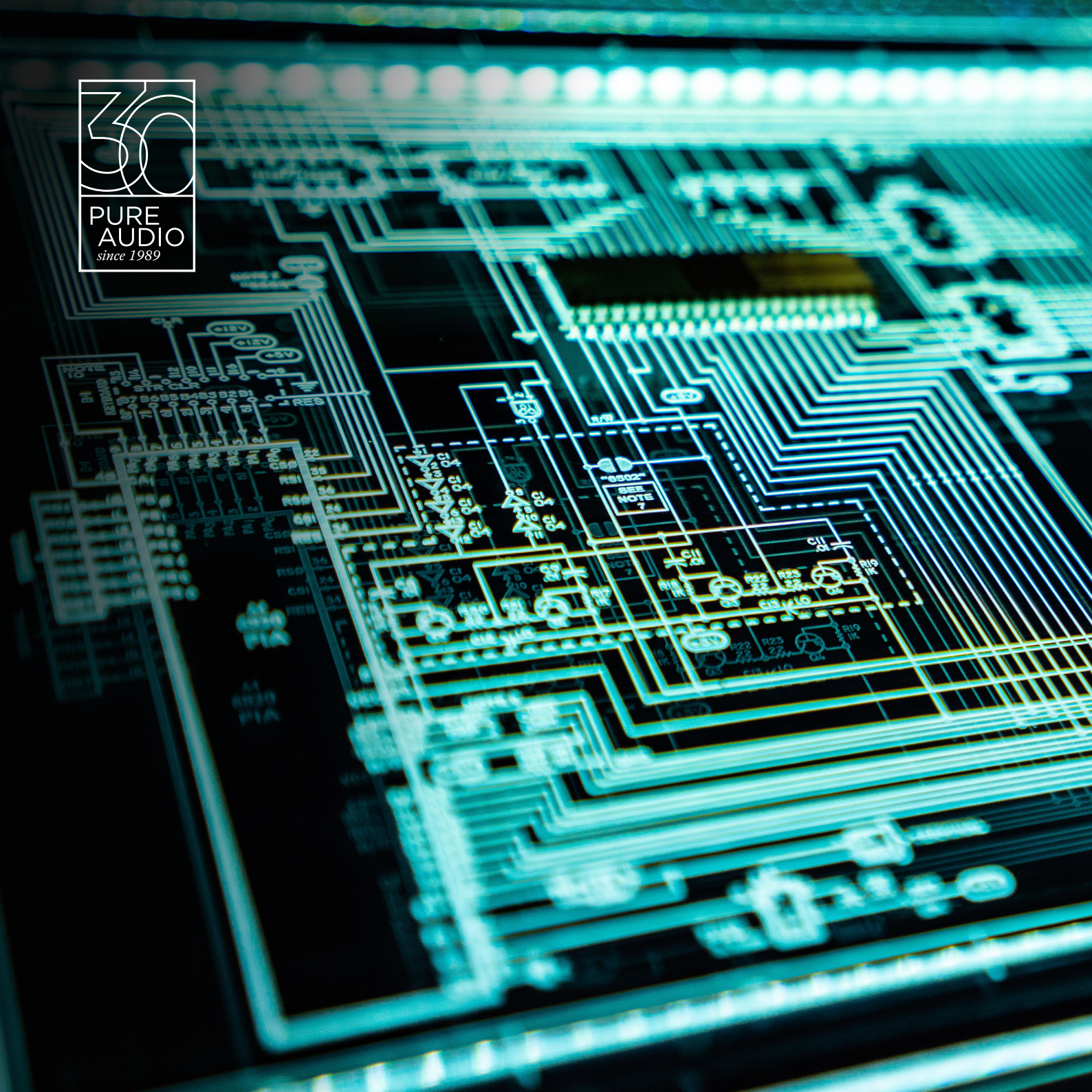
GRAMMY AWARD WINNING MIXER  
**DOM MORLEY**

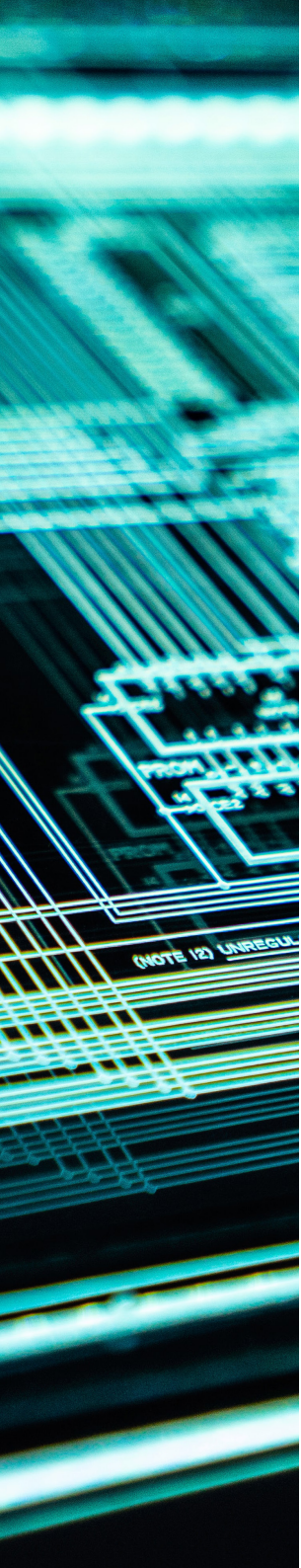
# FROM MUSIC MAKER TO MUSIC LOVER

---

If you've listened to music produced within the last 30 years, then there's a good chance that Chord Electronics was a part of the recording process. Our vast family of professional mix engineers, producers and mastering engineers, choose our precision amplifiers and DACs for their reliability and the incredible window into the music that they bring back to the original recorded performance.







# CRYSTAL CLEAR CLARITY BY MASTER CRAFTSMEN FOR 30 YEARS

---

When you invest in a Chord Electronics product, you're investing in hi-fi built like no other. For over 30 years, we've manufactured our products exclusively in Great Britain, where every facet of production is intimately controlled and perfected to tight tolerances. We use a harmonious marriage of traditional processes and the very latest machinery, to achieve our pursuit of excellence.

Before a product leaves our factory, each and every element is checked and poured over by both a master craftsman and a computer program, to ensure that it arrives to you in perfect condition, ready to take your music playback to the extraordinary.





**DON DELILLO**  
**POINT OMEGA**

"A beautiful  
book - the most  
satisfying Delillo  
has written"  
Jonathan Franzen

Mojo

Poly

CHORD

Bl...

# DISCOVER THE EXTRAORDINARY

---

There is power and mystery in music. It can alter your mood, evoke old memories, spark ideas, send shivers down your spine, break (and mend) your heart, take you out of yourself and unite you with a million others. What you hear is important: but it's what you feel that really matters. We design our products to deliver a deep, immersive, visceral experience, opening the window between you and the recording as it takes you right into the music, revealing every note and nuance, every beat and breath, exactly as it was originally performed. From portables to full-size Reference hi-fi, discover how with power, precision, speed and clarity, we'll transform the music that you love most.







# Mobile

*Your headphone listening experience,  
revolutionised*

Discover multi-award-winning sound  
on-the-go with our pocketable and  
truly portable product range.



## Mojo

### *Portable DAC and Headphone Amplifier*



Mojo is the world's most advanced pocket-sized DAC/headphone amplifier. Despite its size and unrivalled affordability, Mojo is hand-built in the UK using the same custom-coded FPGA technology as its bigger siblings.

Aluminium  
finishes:

Jett  
black



Truly  
portable



Made for  
headphones



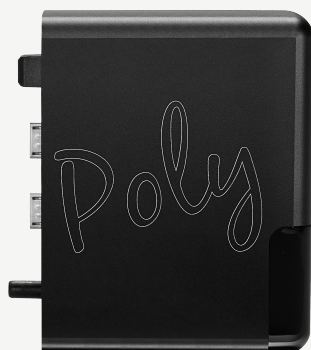
768kHz  
playback



DSD 256  
via DoP



7hours  
Battery life



## Poly

### *Music Streamer and Music Player for Mojo*



A music streamer/player that combines with Mojo for wireless music streaming and playback from its Micro SD, all with smartphone control. With Wi-Fi, Bluetooth and AirPlay, Poly streams from Tidal, Qobuz, Roon, DLNA devices and more.

Aluminium  
finishes:

Jett  
black



WiFi  
Connectivity



Bluetooth  
Connectivity



Micro SD  
Storage



768kHz  
Playback



9hours  
Battery life







# Qutest

*A big performance without the big box*

Size doesn't always matter. A multi-award-winning compact and stealthy range of separates, sitting at the cutting edge of hi-fi.



## Qutest

### *Digital to Analogue Converter*



With DAC architecture based on the award-winning Hugo 2, Qutest offers class-leading digital conversion, four-stage filtering and a powerful custom-coded FPGA. Wide-ranging connectivity, including Dual Data, adds versatility.

Aluminium  
finishes:

Jett  
black



roon  
tested



49,152 tap  
FPGA DAC  
design



Galvanic  
isolation



768kHz  
playback



Up to DSD 512  
via DoP & Native



Selectable  
line level



## Huei

### *Phono stage*



Based on 30 years of amplifier-building expertise, Huei is a compact powerhouse with all the hallmarks of Chord Electronics' legendary design. Huei offers MM/MC compatibility and integrates turntables to our amplifiers.

Aluminium  
finishes:

Jett  
black



Moving  
magnet  
compatible



Moving coil  
compatible



Selectable  
gain



Selectable  
impedance



Rausch  
slope  
rumble filter





## Anni

*Integrated Amplifier*

The new Anni brings award winning ULTIMA tech to desktop setups. Anni is perfect to pair with high-performance headphones, desktop monitors and high-resolution audio sources.

Aluminium  
finishes:

Jett  
black



10 W into  
8Ω



Advanced dual  
feed forward  
error correction



Fully  
balanced  
circuitry



Class A/B  
sliding bias



-92dB Signal to  
noise ratio

## Qutest Stand System

*Stackable stand system for the Qutest range*

Designed to compliment the sharp edged look of Qutest range systems, the Qutest Stand System takes into mind, stackability and unprecedented build quality with an additional thermal pad for improved heat dissipation.



Aluminium  
finishes:

Jett  
black



Stacks with  
existing Chord  
equipment



Solid aircraft  
grade aluminum



Precision  
Machined in  
Great Britain





# Hugo

*The last word in transportable audio*

Elevate hi-fi and headphone performance at home or away with benchmark performance and ground-breaking connectivity. Convenience is guaranteed.



## Hugo 2

*Transportable DAC and Headphone Amplifier*



A powerful and class-leading DAC and headphone amp that builds on the ground-breaking original. Designed for both home and mobile use, Hugo 2 transforms headphones and audio systems' sound quality with cutting-edge technology.

Aluminium  
finishes:

Jett  
black



Argent  
silver



49,152 tap  
FPGA DAC  
design



Transportable  
design



768kHz  
playback



Up to DSD 512  
via DoP & Native



8hrs  
Battery



roon  
tested

## 2go

*Music streamer/player for Hugo 2 and more*



2go is a game-changing music streaming and MicroSD (up to 2TB) playback module for Hugo 2 and more, that enables wired ethernet, Wi-Fi and Bluetooth connectivity. Effortlessly stream and playback from digital libraries, all with app control.

Aluminium  
finishes:

Jett  
black



Argent  
silver



WiFi or  
Ethernet  
Connectivity



Bluetooth  
Connectivity



768kHz  
Playback



2x Micro SD  
Storage



8hours  
Battery life





## 2yu

*Audio interface for 2go*

2yu is a musically transparent interface that connects directly to 2go to offer its best-in-class streaming capabilities and musical performance to other devices.

Aluminium  
finishes:

Jett  
black



Argent  
silver



WiFi or  
Ethernet  
Connectivity



Bluetooth  
Connectivity



768kHz  
Playback



2x Micro SD  
Storage



BNC  
Output





# Table Top

*Hi-fi without convention*

Bring big-box performance to the table top with a convenient, sophisticated, stackable mechanical design, supercharged with Chord Electronics' proprietary technologies.



## Hugo M Scaler

### *1M-tap Digital Upscaler*

Hugo M Scaler is a revolutionary upscaling device, capable of redefining digital audio quality when used with a dual-BNC-input Chord Electronics DAC. It contains the most advanced digital filter in the world, outputting 16x the resolution of CD.

Aluminium  
finishes:

Jett  
black



Argent  
silver



1M-tap digital  
upscaling filter



User  
selectable  
upsampling



768kHz  
playback



Up to DSD 512  
via DoP & Native



Galvanic  
isolation



## Hugo TT 2

### *DAC, Preamplifier and Headphone amplifier*

Developed from the multi-award-winning transportable Hugo 2, the Hugo TT 2 is bigger, better and more advanced in every way. TT 2 sets a new benchmark for table top DACs, eclipsed only by our flagship DAVE.

Aluminium  
finishes:

Jett  
black



Argent  
silver



98,304 tap  
FPGA DAC  
design



Supercapacitor  
energy storage



768kHz  
playback



Up to DSD 512  
via DoP & Native



Galvanic  
isolation



## TToby

### *100W Stereo Power Amplifier*



With technology derived from our SPM range, TToby doesn't compromise on power or prestige. Despite its space-saving dimensions, TToby is every bit a thoroughbred Chord Electronics stereo amplifier.

Aluminium  
finishes:

Jett  
black



Argent  
silver



100W into  
4Ω



Class A/B  
sliding bias



-83dB  
Signal to  
noise ratio



High frequency  
switch mode  
power supply



Fully  
balanced  
circuitry





# Choral

*One giant leap in hi-fi*

Forget tradition: loaded with vanguard technology, Choral defies its meticulously crafted compact chassis to provide an out-of-this-world reference-quality experience with extraordinary flexibility.



## Symphonic

### Phono stage

Our reference-level phono stage, the Symphonic brings advanced features plus our proprietary amplifier technology to vinyl replay, enabling the easy integration of turntables into any system thanks to a multitude of switching options.

Aluminium  
finishes:

Jett  
black



Argent  
silver



Moving coil  
compatible



Selectable  
gain



Selectable  
impedance



Rausch  
slope  
rumble filter



Fully  
balanced  
circuitry

## DAVE

### DAC, Preamplifier and Headphone amplifier



roon  
tested

DAVE is our flagship DAC, a true reference-level product, loaded with our latest-generation (and most advanced) FPGA technology. With preamp and headphone amp functionality, DAVE offers tremendous value, too.

Aluminium  
finishes:

Jett  
black



Argent  
silver



164,000 tap  
FPGA DAC  
design



Preamplifier  
functionality



Supports  
800Ω  
headphones



768kHz  
playback



Up to DSD 512  
via DoP & Native



## Prima

### *Five Input Preamplifier*

The Prima preamp has been designed to harmoniously complement the incredible Etude power amp. Fully balanced with five inputs including XLR, Prima also offers real flexibility with six independent input gain adjustments.

Aluminium  
finishes:

Jett  
black



Argent  
silver



5 Stereo  
analogue  
inputs



1 Stereo  
output



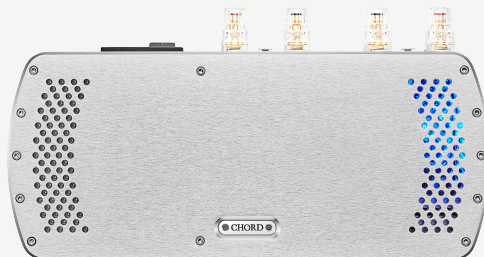
-98dB SNR



Fully  
analogue  
signal path



Fully  
balanced  
circuitry



## Étude

### *150W Stereo Power Amplifier*



Featuring technology derived from the aerospace industry, the Étude is an incredibly compact stereo amplifier with stunning power, speed and resolution. With dual feed forward error correction, Étude is a standout performer for the price.

Aluminium  
finishes:

Jett  
black



Argent  
silver



150W into  
4Ω



Bridgeable  
to 300W  
into 4Ω



Advanced dual  
feed forward  
error correction



Class A/B  
sliding bias



Fully  
balanced  
circuitry



## Ensemble Stand

### *Choral System Rack*

Precision machined from a solid block of aircraft-grade aluminium billet, and a work of art on its own, the Ensemble Stand is irrefutably the best way to secure, display and optimise the Choral system components.

Aluminium  
finishes:

Jett  
black



Argent  
silver



Stacks with  
existing Chord  
equipment



User configurable  
height - S, M, L



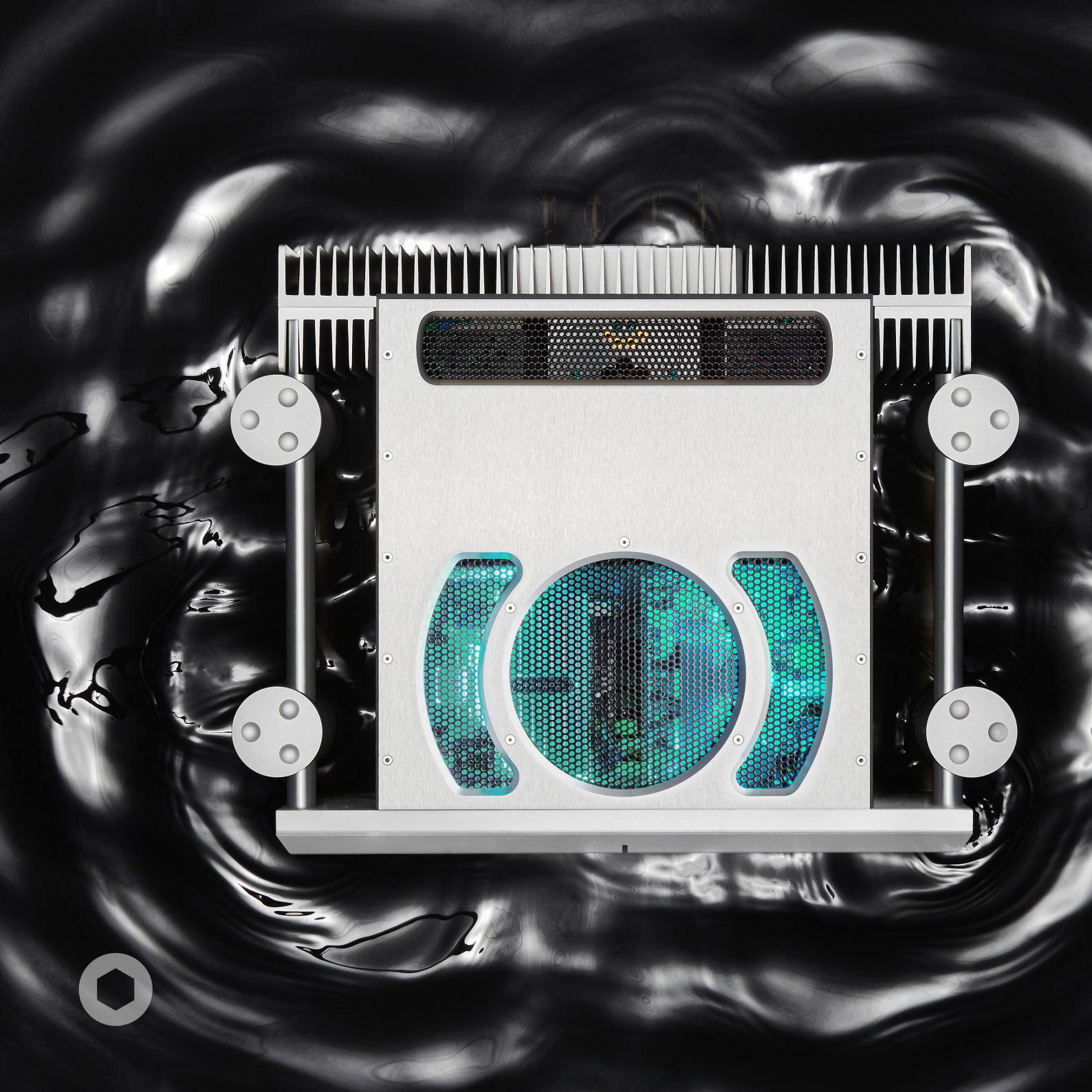
Solid aircraft  
grade aluminum



Machined  
in Great  
Britain









# Full Size

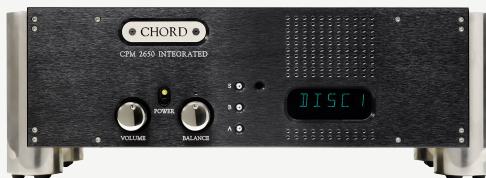
*Pursue the pinnacle of audio artistry*

Supremely reliable and effortlessly powerful, journey deeper into the music that moves you most with the purest, most transparent audio separates, as used in the world's finest recording studios.

## Leg and side block options:



We all appreciate music in different ways, as we do design, which is why with many of the products within the Full Size range you can customise the leg colour to suit your taste, or even opt for our elegant piano black acrylic side blocks. Discuss how you can customise your next purchase with your retailer.



## CPM 2650

### *120W Integrated Amplifier*

Our most affordable integrated, the CPA 2650 combines the legendary low-distortion of the SPM 650 with the precision and control of the CPA 3000, to produce a desirable solution which is every bit a Chord Electronics product.

Aluminium  
finishes:

Jett  
black



Argent  
silver



120W into  
8Ω



6 Stereo  
analogue  
inputs



1 Stereo  
output



Fully  
balanced  
circuitry



Fully  
analogue  
signal path



## CPM 2800 MKII

### *120W Digital Integrated Amplifier*

Unique in the range, the CPM 2800 MKII is a 120-watt amplifier that includes a high-performance Chord Electronics DAC. Sporting both analogue and digital inputs, the amp is the perfect 'digital hub' for any modern system.

Aluminium  
finishes:

Jett  
black



Argent  
silver



120W into  
8Ω



6 Stereo  
analogue  
inputs



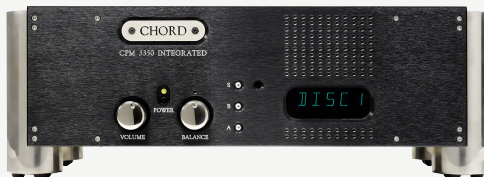
1 Digital USB  
input  
(FPGA DAC)



1 Stereo  
output



Fully  
analogue  
signal path



## CPM 3350

### *220W Integrated Amplifier*

Our flagship integrated, the CPM 3350 combines the legendary low-distortion amplification of the SPM 1050 Mk. II with the precision and control of the CPA 3000 to produce our best one-box solution, taking power up to 220W.

Aluminium  
finishes:

Jett  
black



Argent  
silver



220W into  
8Ω



6 Stereo  
analogue  
inputs



1 Stereo  
output



Fully  
balanced  
circuitry



Fully  
analogue  
signal path



## CPA 3000

### *Seven Input Preamplifier*

Our flexible seven-input preamp routes and attenuates signals without 'adding' anything. With flexible input and output options, it delivers the purest audio experience with absolutely no colouration and minimal distortion.

Aluminium  
finishes:

Jett  
black



Argent  
silver



7 Stereo  
analogue  
inputs



3 Stereo  
outputs



-115dB SNR



Fully  
balanced  
circuitry



Fully  
analogue  
signal path



## ULTIMA 6

### 180W Stereo Power Amplifier

ULTIMA 6 is the most affordable entry into full size Chord Electronics amplification ownership featuring our ground-breaking new error correction topology.

Aluminium  
finishes:

Jett  
black



Argent  
silver



180W into  
8Ω



-83dB Signal to  
noise ratio



High frequency  
switch mode  
power supply



Advanced dual  
feed forward  
error correction



Class A/B  
sliding bias



## ULTIMA 5

### 300W Stereo Power Amplifier

With a verifiable professional heritage and huge amounts of reserve power the ULTIMA 5 is the most popular Chord Electronics stereo power amplifier.

Aluminium  
finishes:

Jett  
black



Argent  
silver



300W into  
8Ω



Advanced dual  
feed forward  
error correction



High frequency  
switch mode  
power supply



Class A/B  
sliding bias



-83dB Signal to  
noise ratio



## ULTIMA 3

### 480W Mono Power Amplifier

Featuring our all-new circuit topology, ULTIMA 3 is a thoroughly modern amplifier for the high-resolution age. Its capable of lightning-fast transient delivery with unparalleled resolution and incredible sound-staging.

Aluminium  
finishes:

Jett  
black



Argent  
silver



480W into  
8Ω



Advanced dual  
feed forward  
error correction



Fully  
balanced  
circuitry



Class A/B  
sliding bias



-84dB signal to  
noise ratio

## ULTIMA Pre 2

### Eight Input Reference Preamplifier



The ULTIMA Pre 2 offers a substantially larger chassis than our Standard Series preamps and contains the latest proprietary ultra-high-frequency power supply.



Aluminium  
finishes:

Jett  
black



Argent  
silver



8 Stereo  
analogue  
inputs



-120dB SNR



Advanced  
power  
shielding



Fully  
analogue  
signal path



Fully  
balanced  
circuitry



# ULTIMA 2

750W Mono Power Amplifier



Updated for the modern age, the ULTIMA 2 carries the very latest Chord Electronics amplifier technology, bringing significant musicality gains over its predecessor, ready to take music to the next level.

Aluminium finishes: Jett black / Argent silver



750W into 8Ω



-89dB Signal to noise ratio



Advanced dual feed forward error correction



Class A/B sliding bias



Fully balanced circuitry





# Reference

## *The zenith of performance*

Unparalleled craftsmanship, unparalleled resolution. This is our Reference range, a statement of the highest order, hand-built without compromise.

### Leg and side block options:



We all appreciate music in different ways, as we do design, which is why with many of the products within the Full Size range you can customise the leg colour to suit your taste, or even opt for our elegant piano black acrylic side blocks. Discuss how you can customise your next purchase with your retailer.



## ULTIMA Preamplifier

### *Flagship Eight Input Preamplifier*

The most accomplished preamp in our 30-year history, the ULTIMA pre is a musical *tour de force*, that adds nothing to the precious incoming signal. A world-class, no-compromise product the ULTIMA PRE is our finest achievement

Aluminium  
finishes:

Jett  
black



Argent  
silver



8 Stereo  
analogue  
inputs



3 Stereo  
outputs



-117dB SnR



Advanced  
power  
shielding



Fully  
analogue  
signal path



## ULTIMA

### *780W Mono Power Amplifier*

ULTIMA was our first amplifier to offer our all-new circuit topology, the first since our inception 30 years ago. It is the pinnacle of our analogue engineering; built to complement the very best loudspeakers in the world.

Aluminium  
finishes:

Jett  
black



Argent  
silver



780W into  
8Ω



-90dB Signal to  
noise ratio



Advanced dual  
feed forward  
error correction



Class A/B  
sliding bias



Fully  
balanced  
circuitry





# ONCE YOU PLACE YOUR ORDER

---

As with all Chord Electronics products, our avionics heritage inspires only the highest quality: all of our products start life as a single billet of aircraft-grade aluminium. This is just one of the hundreds of processes that help shape our multi-award-winning devices; the same standards, care and attention run through the production of all of our units.

When you place an order for a device in the Table Top range and above, your purchase is assigned to an engineer who will begin the process of curating each individual component before carefully crafting the unit to the highest standards. Only once it has passed numerous measured and listening tests, will it qualify for a Chord Electronics name badge. Naturally, this is a bespoke process that takes time, however, during your products' build, you are more than welcome to ask your retailer any questions that you may have.

**HEAR THE EXTRAORDINARY**

**[CHORDELECTRONICS.CO.UK/LOCATE-DEALER](http://CHORDELECTRONICS.CO.UK/LOCATE-DEALER)**