

S6320 Series 10GE Switches





S6320 Series 10GE Switches

Product Overview

The S6300 series switches are next-generation 10G box switches. The S6300 can function as an access switch in an Internet data center (IDC), aggregation switch on a Metropolitan Area Network (MAN), or core/aggregation switch on a campus network.

The S6320 has industry-leading performance, provides line-speed 10GE access ports and line-speed 40GE uplink ports. It can be used in a data center to provide 10 Gbit/s access to servers or function as a core switch on a campus network to provide 10 Gbit/s traffic aggregation. In addition, the S6320 provides a wide variety of services, comprehensive security policies, and various QoS features to help customers build scalable, manageable, reliable, and secure data centers.

S6320S-26Q-EI-24S is a compact switch with 220mm depth, perfectly suitable in a 300 mm deep cabinet, saving installation space for customers.

Product Appearance

S6320-30C-EI-24S-AC
S6320-30C-EI-24S-DC



- 24 × 10GE SFP+, 2 × 40 GE QSFP+ ports
- One extended slot for 4 × 40GE QSFP+ interface card
- Double hot swappable AC/DC power supplies
- Forwarding performance: 720 Mpps
- Switching capacity: 2.56 Tbps

S6320-54C-EI-48S-AC
S6320-54C-EI-48S-DC
S6320-54C-EI-48S



- 48 × 10GE SFP+, 2 × 40 GE QSFP+ ports
- One extended slot for 4 × 40GE QSFP+ interface card
- Double hot swappable AC/DC power supplies
- Forwarding performance: 1080 Mpps
- Switching capacity: 2.56 Tbps

S6320-26Q-EI-24S-AC
S6320-26Q-EI-24S-DC
S6320-26Q-EI-24S



- 24 × 10GE SFP+, 2 × 40GE QSFP+ ports
- Double hot swappable AC/DC power supplies
- Forwarding performance: 480 Mpps
- Switching capacity: 2.56 Tbps

Product Features

Large-capacity, high-density, 10 Gbit/s access

- To provide sufficient bandwidth for users, many servers, particularly those in data centers, use 10G network adapters. The S6320 can be used in data centers to provide high forwarding performance and 10GE ports. The S6320 has the high density of all 10GE ports and the large switching capacity. Each S6320 provides a maximum of 6 line-speed QSFP+ ports and 48 line-speed 10GE ports.
- S6320 ports support 1GE and 10GE access and can identify optical module types, maximizing the return on investment and allowing users to flexibly deploy services.
- The S6320 has a large buffering capacity and uses an advanced buffer scheduling mechanism to ensure non-block transmission when data center traffic volume is high.

Comprehensive security policies

- The S6320 provides multiple security measures to defend against Denial of Service (DoS) attacks, as well as attacks against networks or users. DoS attack types include SYN Flood attacks, Land attacks, Smurf attacks, and ICMP Flood attacks. Attacks to networks refer to STP BPDU/root attacks. Attacks to users include bogus DHCP server attacks, man-in-the-middle attacks, IP/MAC spoofing attacks, and DHCP request flood attacks. DoS attacks that change the CHADDR field in DHCP packets are also attacks against users.
- The S6320 supports DHCP snooping, which generates user binding entries based on users' access interfaces, MAC addresses, IP addresses, IP address leases, and VLAN IDs. DHCP snooping discards invalid packets that do not match any binding entries, such as ARP spoofing packets and IP spoofing packets. This prevents hackers from using ARP packets to initiate attacks on campus networks. The interface connected to a DHCP server can be configured as a trusted interface to protect the system against bogus DHCP server attacks.
- The S6320 supports strict ARP learning, which prevents ARP spoofing attacks that exhaust ARP entries. The S6320 also provides an IP source check to prevent DoS attacks caused by MAC address spoofing, IP address spoofing, and MAC/IP spoofing. URPF, provided by the S6320, authenticates packets by checking the packet transmission path in reverse, which can protect the network against source address spoofing attacks.
- The S6320 supports centralized MAC address authentication and 802.1x authentication. The S6320 authenticates users based on statically or dynamically bound user information such as the user name, IP address, MAC address, VLAN ID, access interface, and flag indicating whether antivirus software is installed. VLANs, QoS policies, and ACLs can be dynamically applied to users.
- The S6320 can limit the number of MAC addresses learned on an interface to prevent attackers from exhausting MAC address entries by using bogus source MAC addresses. This function minimizes the packet flooding that occurs when users' MAC addresses cannot be found in the MAC address table.

Higher reliability mechanism

- The S6320 supports redundant power supplies. You can choose a single power supply or use two power supplies to ensure device reliability. With two fans, the S6320 has a longer MTBF time than its counterpart switches.
- The S6320 supports MSTP multi-process that enhances the existing STP, RSTP, and MSTP implementation. This function increases the number of MSTPs supported on a network. It also supports enhanced Ethernet reliability technologies such as Smart Link and RRPP, which implement millisecond-level protection switchover and ensure network reliability. Smart Link and RRPP both support multi-instance to implement load balancing among links, optimizing bandwidth usage.
- The S6320 supports the enhanced trunk (E-Trunk) feature. When a CE is dual-homed to two S6320s (PEs), E-Trunk protects the links between the CE and PEs and implements backup between the PEs. E-trunk enhances link reliability between devices.
- The S6320 supports the Smart Ethernet Protection (SEP) protocol, a ring network protocol applied to the link layer on an Ethernet network. SEP can be used on open ring networks and can be deployed on upper-layer aggregation devices to provide fast switchover (within 50 ms), ensuring the non-stop transmission of services. SEP features simplicity, high reliability, fast switchover, easy maintenance, and flexible topology, facilitating network planning and management.
- The S6320 supports Ethernet Ring Protection Switching (ERPS), also referred to as G.8032. As the latest ring network protocol, ERPS was developed based on traditional Ethernet MAC and bridging functions and uses mature Ethernet OAM function and a ring automatic protection switching (R-APS) mechanism to implement millisecond-level protection switching. ERPS supports various services and allows flexible networking, helping customers build a network with lower OPEX and CAPEX.
- The S6320 supports VRRP. Two S6320s can form a VRRP group to ensure nonstop reliable communication. Multiple equal-cost routes to upstream devices can be configured on the S6320 to provide route redundancy. When an active route is unreachable, traffic is switched to a backup route.

Enhanced QoS control mechanism

- The S6320 implements complex traffic classification based on packet information, such as the 5-tuple, IP preference, ToS, DSCP, IP protocol type, ICMP type, TCP source port, VLAN ID, Ethernet protocol type, and CoS. ACLs can be applied to inbound or outbound directions on an interface. The S6320 supports a flow-based two-rate three-color CAR. Each port supports eight priority queues, multiple queue scheduling algorithms, such as WRR, DRR, SP, WRR+SP, and DRR+SP, and WRED, a congestion avoidance algorithm. All of these features ensure high-quality voice, video, and data services.

High scalability

- The S6320 supports the iStack function, which allows switches that are far apart to form a stack. A port on the S6320 can be configured as a stack port using a command for flexible stack deployment. The distance between stacked switches is further increased when the switches are connected with optical fibers. A stack is easier to expand, is more reliable, and has a higher performance rate than a single switch. New member switches can be added to a stack without interrupting services when the system

capacity needs to be increased or a member switch fails. Compared with the stacking of chassis-shaped switches, the iStack function can increase system capacity and port density without being restricted by hardware. Multiple devices in a stack can function as one logical device, which simplifies network management and configuration.

Convenient management

- The S6320 supports automatic configuration, plug-and-play, deployment using a USB flash drive, and batch remote upgrades. These capabilities simplify device management and maintenance and reduce maintenance costs.
- The S6320 supports SNMP v1/v2c/v3 and provides flexible methods for managing devices. Users can manage the S6320 using the CLI, Web NMS and Telnet. The NQA function assists users with network planning and upgrades. In addition, the S6320 supports NTP, SSH v2, HWTACACS, RMON, log hosts, and port-based traffic statistics.
- The S6320 supports GARP VLAN Registration Protocol (GVRP), which dynamically distributes, registers, and propagates VLAN attributes to reduce network administrator workloads and ensure correct VLAN configuration. In a complex network topology, GVRP simplifies VLAN configuration and reduces network communication faults caused by incorrect VLAN configuration.
- The S6320 supports Multiplex VLAN (MUX VLAN). MUX VLAN isolates Layer 2 traffic between interfaces in a VLAN. Interfaces in a subordinate separate VLAN can communicate with ports in the principal VLAN, but cannot communicate with each other. MUX VLAN is typically used on an enterprise intranet to isolate user interfaces from each other while still allowing them to communicate with server interfaces. This function prevents communication between network devices connected to certain interfaces or interface groups, but allows these devices to communicate with the default gateway.
- The S6320 supports BFD, which provides millisecond-level fault detection for protocols, such as OSPF, IS-IS, VRRP, and PIM, to improve network reliability. Complying with IEEE 802.3ah and 802.1ag, the S6320 supports point-to-point Ethernet fault management and can detect faults in the last mile of an Ethernet link to users. Ethernet OAM improves Ethernet network management and maintenance capabilities and ensures a stable network.

Various IPv6 features

- The S6320 supports IPv4/IPv6 dual stack and can migrate from an IPv4 network to an IPv6 network. S6320 hardware supports IPv4/IPv6 dual stack, IPv6 over IPv4 tunnels (including manual tunnels, 6to4 tunnels, and ISATAP tunnels), and Layer 3 line-speed forwarding. The S6320 can be deployed on IPv4 networks, IPv6 networks, or networks that run both IPv4 and IPv6. This makes networking flexible and enables a network to migrate from IPv4 to IPv6.
- The S6320 supports various IPv6 routing protocols, including RIPng and OSPFv3. The S6320 uses the IPv6 Neighbor Discovery Protocol (NDP) to manage packets exchanged between neighbors. It also provides a path MTU (PMTU) discovery mechanism to select a proper MTU on the path from the source to the destination, optimizing network resource utilization and obtaining the maximum throughput.

Product Specifications

Item	S6320-30C-EI-24S-AC S6320-30C-EI-24S-DC	S6320-54C-EI-48S-AC S6320-54C-EI-48S-DC S6320-54C-EI-48S	S6320-26Q-EI-24S-AC S6320-26Q-EI-24S-DC S6320-26Q-EI-24S
Fixed Port	24 × 10GE SFP+ , 2 × 40GE QSFP+ ports	48 × 10GE SFP+ , 2 × 40GE QSFP+ ports	24 × 10GE SFP+ , 2 × 40GE QSFP+ ports
Extended slot	One extended slot for 4 × 40 GE QSFP+ interface card	One extended slot for 4 × 40 GE QSFP+ interface card	Not supported
MAC address table	288k MAC address entries MAC address learning and aging Static, dynamic, and black hole MAC address entries Packet filtering based on source MAC addresses		
VLAN	4K VLANs Guest VLAN and voice VLAN VLAN assignment based on MAC addresses, protocols, IP subnets, policies, and ports 1:1 and N:1 VLAN Mapping QinQ and selective QinQ		
IPv4 routing	Static routing, RIPv1, RIPv2, ECMP, and URPF OSPF, IS-IS, and BGP VRRP Policy-based routing Routing policy		
IPv6 routing	Static route RIPng, OSPFv3, BGP4+, ISISv6		
IPv6 features	Neighbor Discovery (ND) PMTU IPv6 ping, IPv6 tracert, and IPv6 Telnet 6to4 tunnel, ISATAP tunnel, and manually configured tunnel ACLs based on the source IPv6 address, destination IPv6 address, Layer 4 ports, or protocol type MLD v1/v2 snooping		
multicast	Static Layer 2 multicast MAC address MAC-based multicast forwarding IGMP snooping and IGMP fast leave Multicast VLAN MLD snooping IGMP proxy Controllable multicast Port-based multicast traffic statistics IGMP v1/v2/v3 PIM-SM, PIM-DM, and PIM-SSM MSDP MVPN		

Item	S6320-30C-EI-24S-AC S6320-30C-EI-24S-DC	S6320-54C-EI-48S-AC S6320-54C-EI-48S-DC S6320-54C-EI-48S	S6320-26Q-EI-24S-AC S6320-26Q-EI-24S-DC S6320-26Q-EI-24S
QoS/ACL	Rate limiting on packets sent and received by an interface Packet redirection Port-based traffic policing and two-rate three-color CAR Eight queues on each port WRR, DRR, SP, WRR+SP, and DRR+SP queue scheduling algorithms Re-marking of the 802.1p priority and DSCP priority Packet filtering at Layer 2 to Layer 4, filtering out invalid frames based on the source MAC address, destination MAC address, source IP address, destination IP address, port number, protocol type, and VLAN ID Rate limiting in each queue and traffic shaping on ports		
MPLS	MPLS, MPLS VLL, L3VPN		
VPLS	Martini VPLS		
Reliability	STP(IEEE 802.1d), RSTP(IEEE 802.1w), and MSTP(IEEE 802.1s) BPDU protection, root protection, and loop protection RRPP ring topology and RRPP multi-instance Smart Link tree topology and Smart Link multi-instance, providing the millisecond-level protection switchover SEP ERPS(G.8032 v2) BFD for OSPF, BFD for IS-IS, BFD for VRRP, and BFD for PIM E-Trunk		
Security	User privilege management and password protection DoS attack defense, ARP attack defense, and ICMP attack defense Binding of the IP address, MAC address, interface, and VLAN Port isolation, port security, and sticky MAC Blackhole MAC address entries Limit on the number of learned MAC addresses 802.1x authentication and limit on the number of users on an interface AAA authentication, RADIUS authentication and TACACS authentication SSH v2.0 Hypertext Transfer Protocol Secure (HTTPS) CPU defense Blacklist and whitelist		

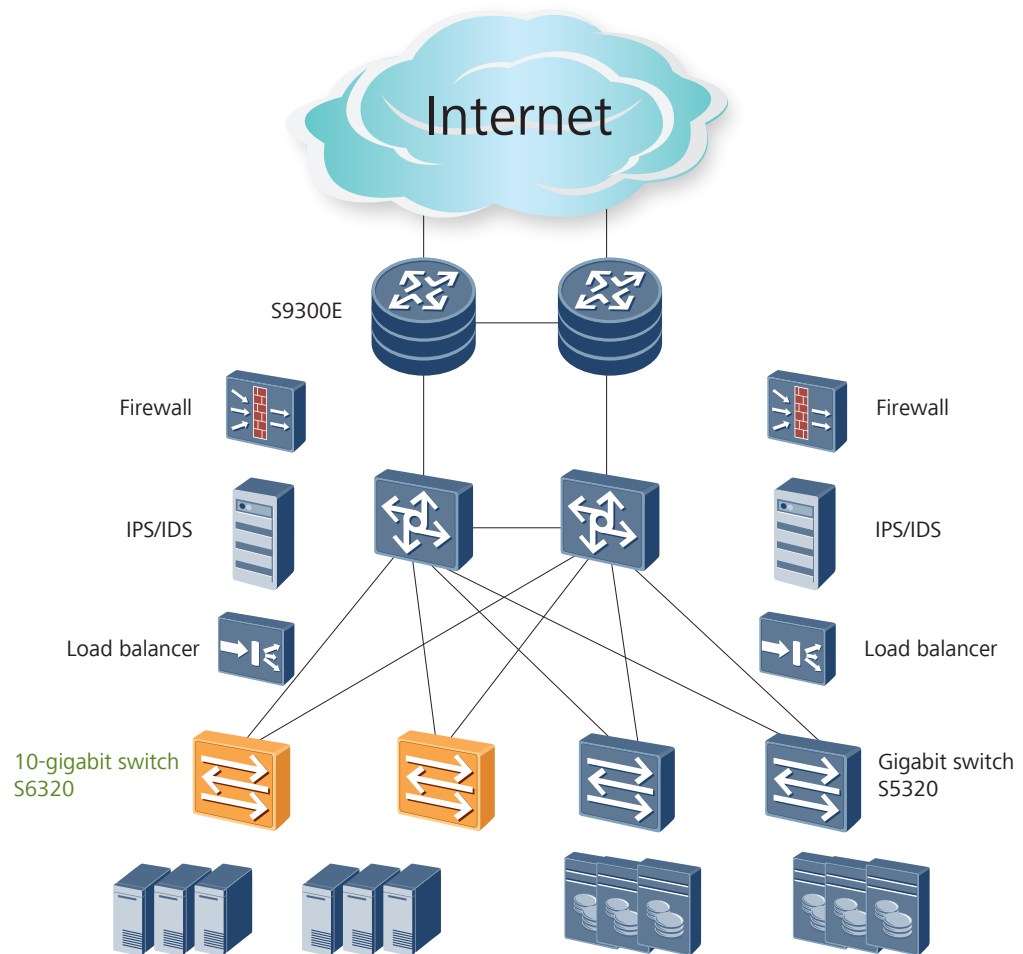
Item	S6320-30C-EI-24S-AC S6320-30C-EI-24S-DC	S6320-54C-EI-48S-AC S6320-54C-EI-48S-DC S6320-54C-EI-48S	S6320-26Q-EI-24S-AC S6320-26Q-EI-24S-DC S6320-26Q-EI-24S
Super Virtual Fabric (SVF)	SVF parent: vertically virtualizes downlink switches into one device for simplified management. The two-layer client architecture is supported. SVF client		
Management and maintenance	iStack (using service ports as stack ports) MAC Forced Forwarding (MFF) Virtual cable test Ethernet OAM (IEEE 802.3ah and 802.1ag) Local port mirroring and remote switched port analyzer (RSPAN), allowing an observing port to forward packets Remote configuration and maintenance using Telnet SNMP v1/v2c/v3 RMON Web NMS System logs and alarms of different levels GVRP MUX VLAN		
Operating environment	Operating temperature: 0-1800 m: 0-45 °C; 1800-5000 m: decrease 1 °C when the altitude increases every 220 m Relative humidity: 5% to 95% (non-condensing)		
Input voltage	AC: Rated voltage range: 100 V to 240 V AC, 50/60 Hz Maximum voltage range: 90 V to 264 V AC, 47/63 Hz DC: Rated voltage range: -48 V to -60 V, DC Maximum voltage range: -36 V to -72 V, DC		
Dimensions (W x D x H)	442 × 420 × 44.4	442 × 420 × 44.4	442 × 220 × 44.4
Typical power consumption	AC: without subcard: 147W; with subcard: 166W DC: without subcard: 141W, with subcard: 160W	AC: without subcard: 190W; with subcard: 209W DC: without subcard: 185W, with subcard: 204W	AC: 109W(without subcard) DC: 101W(without subcard)

Applications

Data Centers

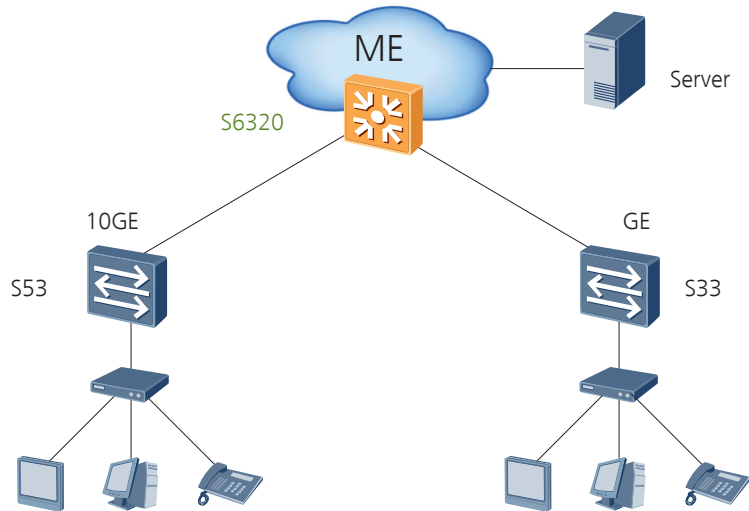
The S6320 can be used in Huawei's sustainable data center solution, which offers four major advantages: evolution, availability, pooling, and visualization.

As shown in the following figure, the S9300E Terabit routing switches function as core switches in a data center and use firewall and load balancer boards to ensure security and load balancing. The S6320 functions as an access switch and provides high-density 10GE ports to connect to 10G servers.



Application in MAN

The S6320 is applicable to MAN convergence. It provides industry-leading high-density 10-gigabit ports to meet the increasing bandwidth demand. Abundant features and perfect security control mechanisms enable the S6320 to be the most cost-effective choice for MAN convergence.



Ordering Information

Description

S6320-30C-EI-24S-AC bundle(24 × 10GE SFP+ , 2 × 40GE QSFP+ ports ,with 1 extended slot, with 600W AC power supply)

S6320-54C-EI-48S-AC bundle(48 × 10GE SFP+ , 2 × 40GE QSFP+ ports ,with 1 extended slot, with 600W AC power supply)

S6320-30C-EI-24S-DC bundle(24 × 10GE SFP+ , 2 × 40GE QSFP+ ports ,with 1 extended slot, with 350W DC power supply)

S6320-54C-EI-48S-DC bundle(48 × 10GE SFP+ , 2 × 40GE QSFP+ ports ,with 1 extended slot, with 350W DC power supply)

S6320-54C-EI-48S Bundle(48 10 Gig SFP+,2 40 Gig QSFP+ interface,with 1 interface slot,with 350W DC power supply)

S6320-26Q-EI-24S-AC bundle(24 × 10GE SFP+ , 2 × 40GE QSFP+ ports , with 170W AC power supply)

S6320-26Q-EI-24S-DC bundle(24 × 10GE SFP+ , 2 × 40GE QSFP+ ports , with 170W DC power supply)

S6320-26Q-EI-24S(24 10 Gig SFP+,2 40 Gig QSFP+,without power module)

4 × 40 GE QSFP+ interface card(used in S6320EI series)

Fan box(B,FAN panel side exhaust)

600W AC power module

350W DC power module

170W AC power module



170W DC power module

For more information, visit <http://www.huawei.com> or contact your local Huawei sales office.

Copyright © Huawei Technologies Co., Ltd. 2017. All rights reserved.

No part of this document may be reproduced or transmitted in any form or by any means without prior written consent of Huawei Technologies Co., Ltd.

Trademark Notice

 , HUAWEI, and  are trademarks or registered trademarks of Huawei Technologies Co., Ltd. Other trademarks, product, service and company names mentioned are the property of their respective owners.

General Disclaimer

The information in this document may contain predictive statements including, without limitation, statements regarding the future financial and operating results, future product portfolio, new technology, etc. There are a number of factors that could cause actual results and developments to differ materially from those expressed or implied in the predictive statements. Therefore, such information is provided for reference purpose only and constitutes neither an offer nor an acceptance. Huawei may change the information at any time without notice.

HUAWEI TECHNOLOGIES CO.,LTD.
Huawei Industrial Base
Bantian Longgang
Shenzhen 518129,P.R.China
Tel: +86 755 28780808

www.huawei.com