



User Guide

Kasa Cam Outdoor

Contents

About This Guide	1	Reset Your Kasa Cam Outdoor	25
Introduction	2	Smart Actions - Motion Sensing.....	28
Appearance	3	Voice & Third-Party Support	33
Set Up Your Camera.....	4	Authentication.....	37
Main Device Controls	5		
Set Schedules	6		
Enable 24/7 Recording	8		
Check 24/7 Recording Videos	9		
Turn On/Off Spotlight Temporarily.....	10		
Screen Recording.....	11		

About This Guide

This guide provides a brief introduction to the Kasa Cam Outdoor and the Kasa app, as well as regulatory information.

Features available of this product and in Kasa Smart may vary by model and software version. Kasa Cam Outdoor and Kasa Smart availability may also vary by region. All images, steps, and descriptions in this guide are only examples and may not reflect your actual experience.

Conventions

In this guide, the following convention is used:

Convention	Description
Teal	Key information appears in teal, including management page text such as menus, items, buttons and so on.
<u>Underline</u>	Hyperlinks are in teal and underlined. You can click to redirect to a website.

More Info

- Specifications can be found on the product page at <https://www.tp-link.com>.
- Our Technical Support and troubleshooting information can be found at <https://www.tp-link.com/support>.
- A TP-Link Community is provided for you to discuss our products at <https://community.tp-link.com>.
- Frequently Asked Questions (FAQs) can be found at <https://www.tp-link.com/support/faq/>.

Introduction

Kasa Cam Outdoor is designed to keep your home secure. A built-in siren and 2-way audio can scare away unwanted visitors. Day or night, rain or shine, Kasa Cam Outdoor protects what you love most.

- **2K HD Video** - Sharp and clear 4 MP high-resolution video delivers more delicate details.
- **Full-Time Color** - Enhance your security view with vivid colors even at night with the integrated spotlights.
- **Starlight Night Vision** - The highly-sensitive starlight sensor captures higher-quality images even in low-light conditions.
- **Live View from Anywhere** - See, hear, and talk like you're there via your phone or any supported display.
- **Weatherproof** - With an IP65 rating, this camera will monitor in the rain and in high dust conditions.
- **Cloud Storage Plans** - Upgrade your Kasa Care subscription plan and enjoy video recordings for up to 30 days.
- **Secure Local Storage** - Save footage 24/7 on a microSD card*. Kasa supports up to 256GB microSD card.
*microSD not provided.
- **Deter Strangers** - Sound the siren to keep your home safe and secure from intruders.
- **Watch on the Big Screen** - Live stream video to your smartphone and Amazon Alexa and Google Assistant supported displays.
- **Activity Zone** - Set high activity zones to reduce false alarms and get smarter alerts to your phone.



Appearance

Kasa Cam Outdoor has a system LED that changes color according to its status, a microphone, a USB cable, a microSD card slot, and a RESET button. See the explanation below:

System LED

- Solid amber:
Rebooting
- Alternating amber and green:
Ready for setup
- Flashing red:
Connecting to Wi-Fi
- Flashing green:
Connected to Wi-Fi
- Solid green:
Bound to Cloud
- Flashing amber:
Resetting



RESET Button

Note: Remove the cover first

- Press and hold for 3 to 15 seconds:
Reenable setup mode
- Press and hold for over 15 seconds:
Reset to factory default settings

microSD Card Slot

Save recorded videos to the microSD card.

USB Cable

Connects the power adapter provided to power the camera.

Provided mounting screws:



Speakers and Microphone

Built-in internal speakers and microphone protected by the waterproof membrane.

⚠ Warning: Do NOT insert objects into the holes!

Set Up Your Camera

Follow the steps below to get started with your new camera.

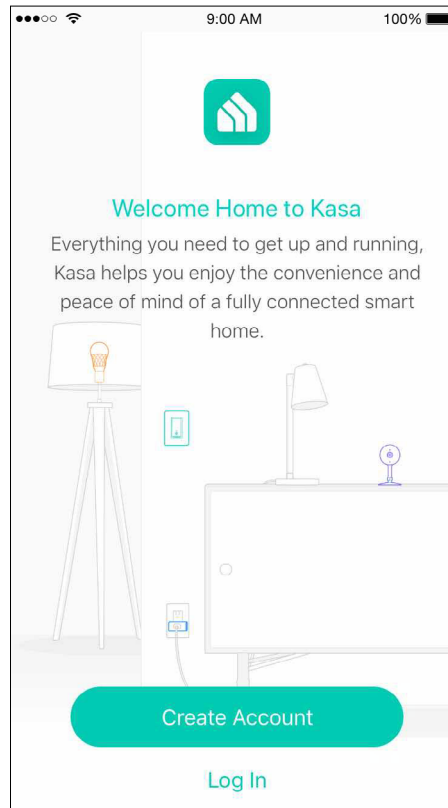
Step 1. Download Kasa

Get the [Kasa Smart](#) app from the App Store or Google Play, or by scanning the QR code below.



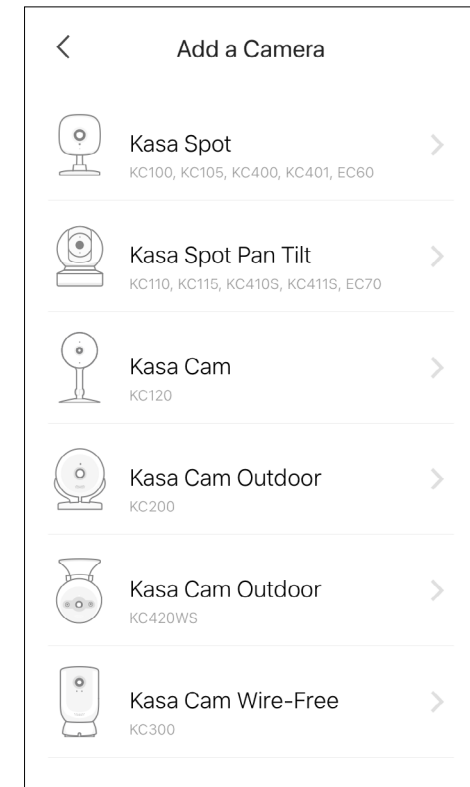
Step 2. Log In

Open the app, and log in with your TP-Link ID. If you don't have an account, create one first.



Step 3. Start Setup

Tap the + button and select [Cameras](#) > [Kasa Cam Outdoor \(KC420WS\)](#). Follow app instructions to set up and install the camera.

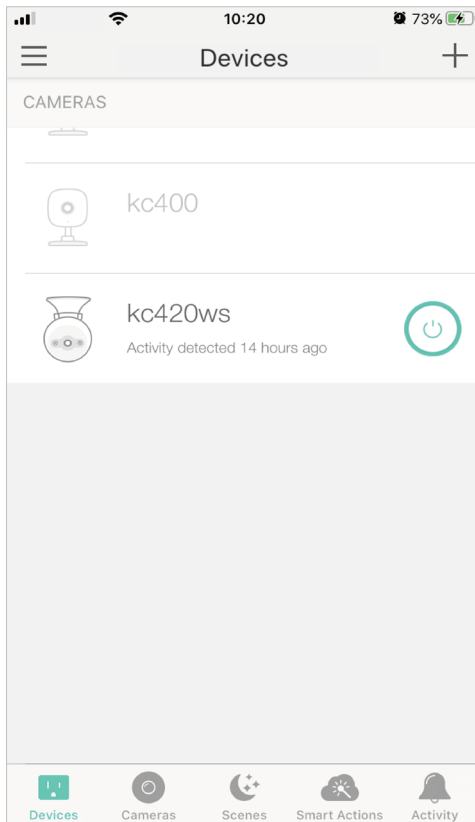


Main Device Controls

After you successfully set up your Kasa Cam Outdoor, you will see the home page of the Kasa Smart app. Here you can view and manage all devices that you've added to Kasa. Tap your camera to enter the live view page and further manage it.

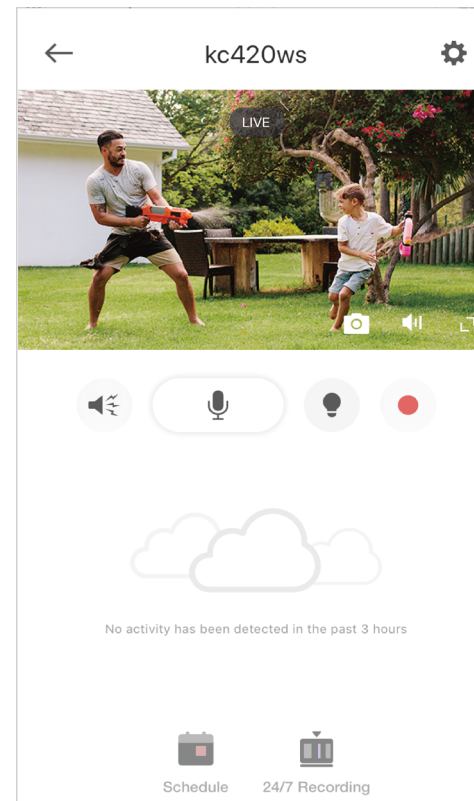
Home Page

You can see all your Kasa devices listed in the Home page.



Live View Page


Tap the camera in the Home page to enter the Live View page. Here you can check live view video and activities detected by your camera.



Set Schedules

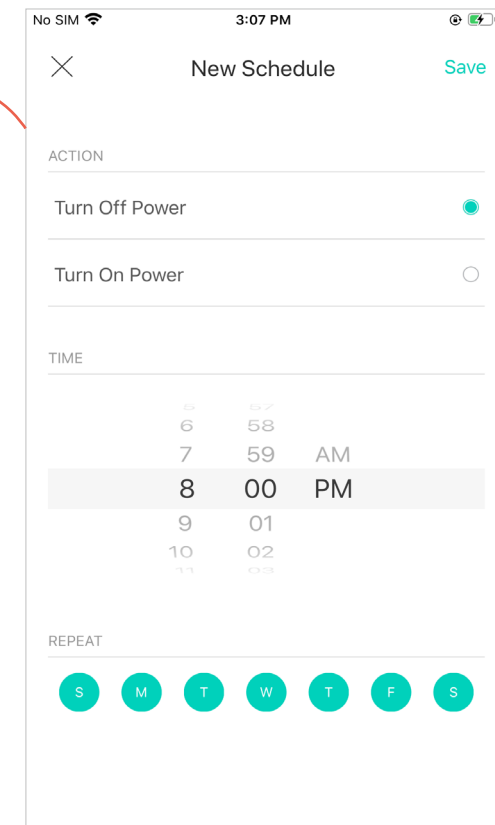
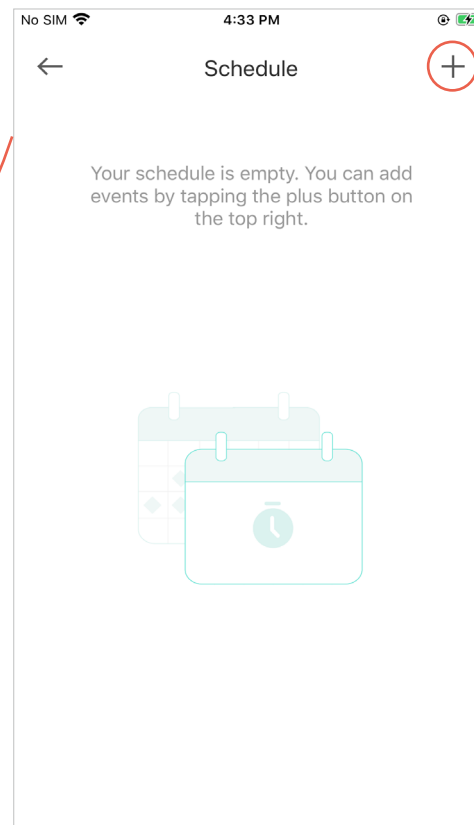
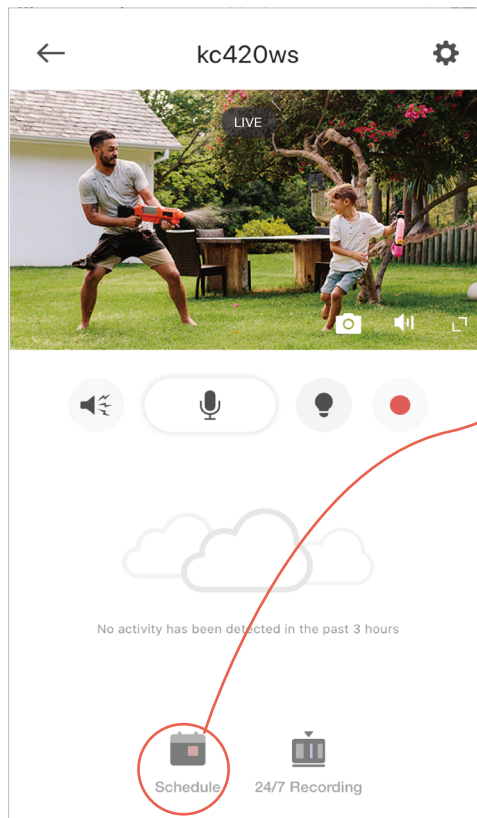
Set schedules to automatically turn on/off your camera at set times according to your daily routine.

Note: When the camera is off, you cannot watch live view video.

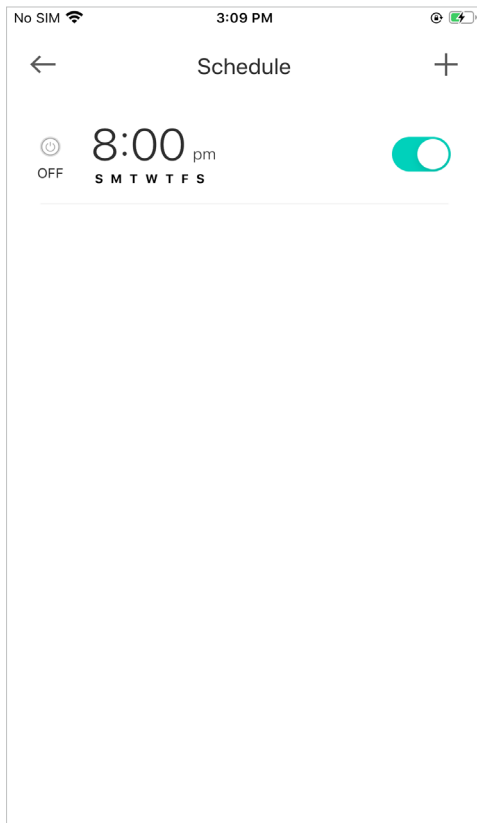
1. Tap your camera in the Home page to enter the live view page, and then tap  .

2. Tap + on the top right corner.

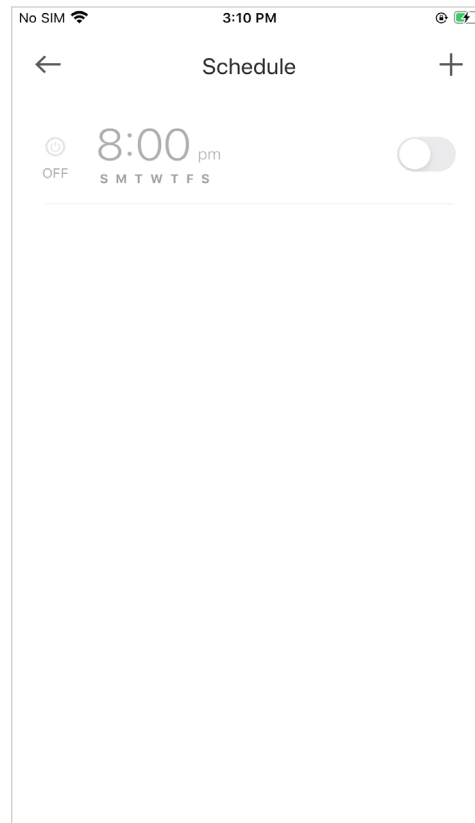
3. Set a schedule to turn your camera on or off.



4. Tap [Save](#) and you'll see your schedule listed in the [Schedule](#) Page. You can add more schedules following the same steps.




5. You can turn off your schedule any time at the [Schedule](#) page.



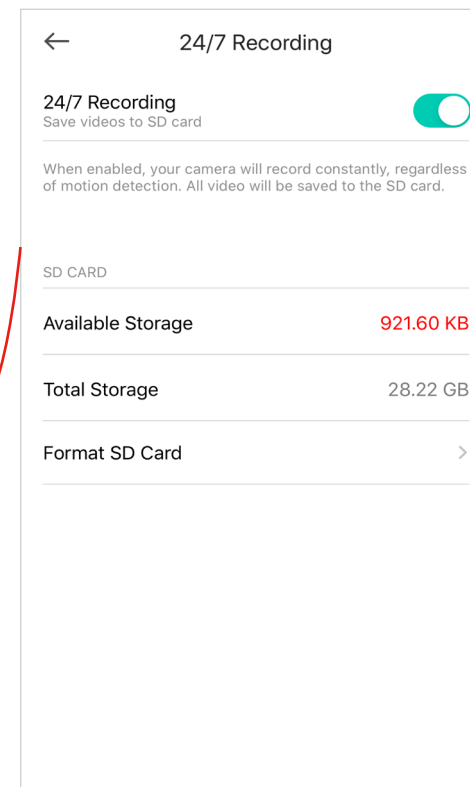
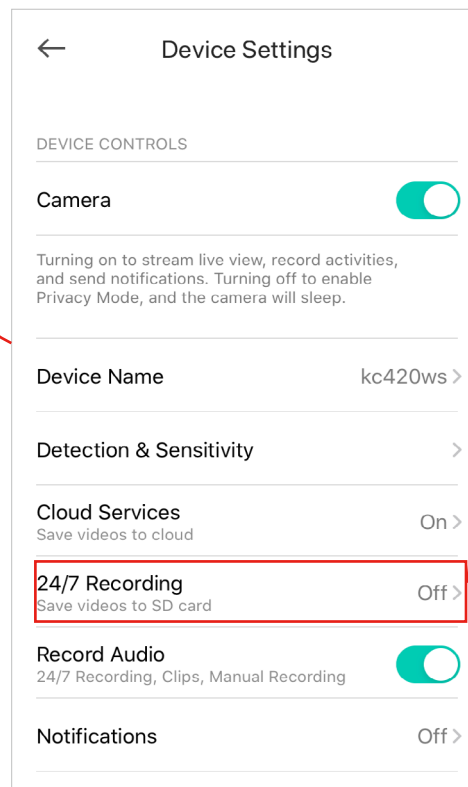
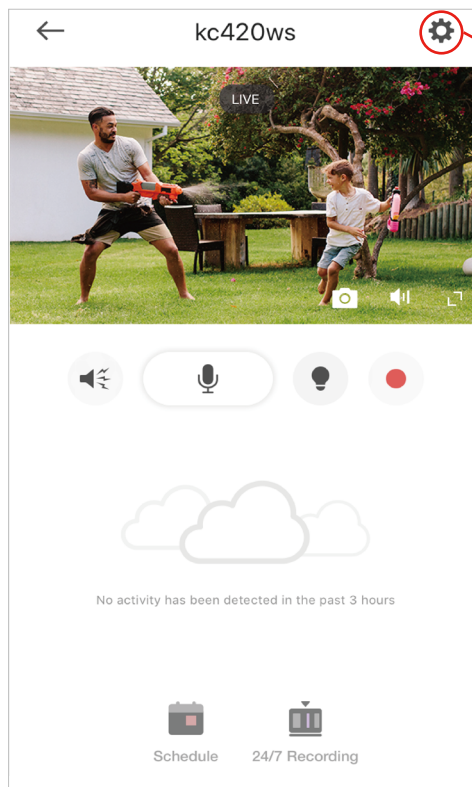
Enable 24/7 Recording

When 24/7 Recording is enabled, your camera will record every minute of every day so you'll never miss a thing.

Note: You need to insert a microSD card first.

In the live view page, tap  then [24/7 Recording](#). You can enable or disabled the feature and check the storage of your microSD card.

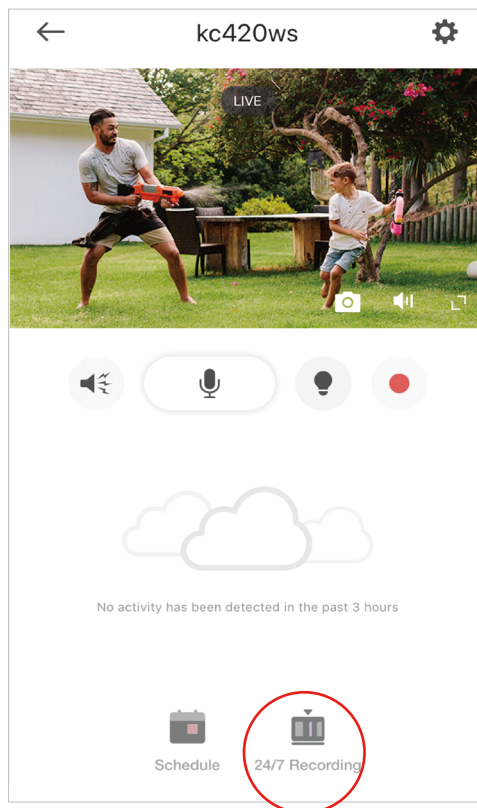
Encryption: When enabled, all videos recorded to your SD card can only be read from this Kasa Cam Outdoor.



Check 24/7 Recording Videos


The recorded videos are saved in the microSD card. You can check it in the app.

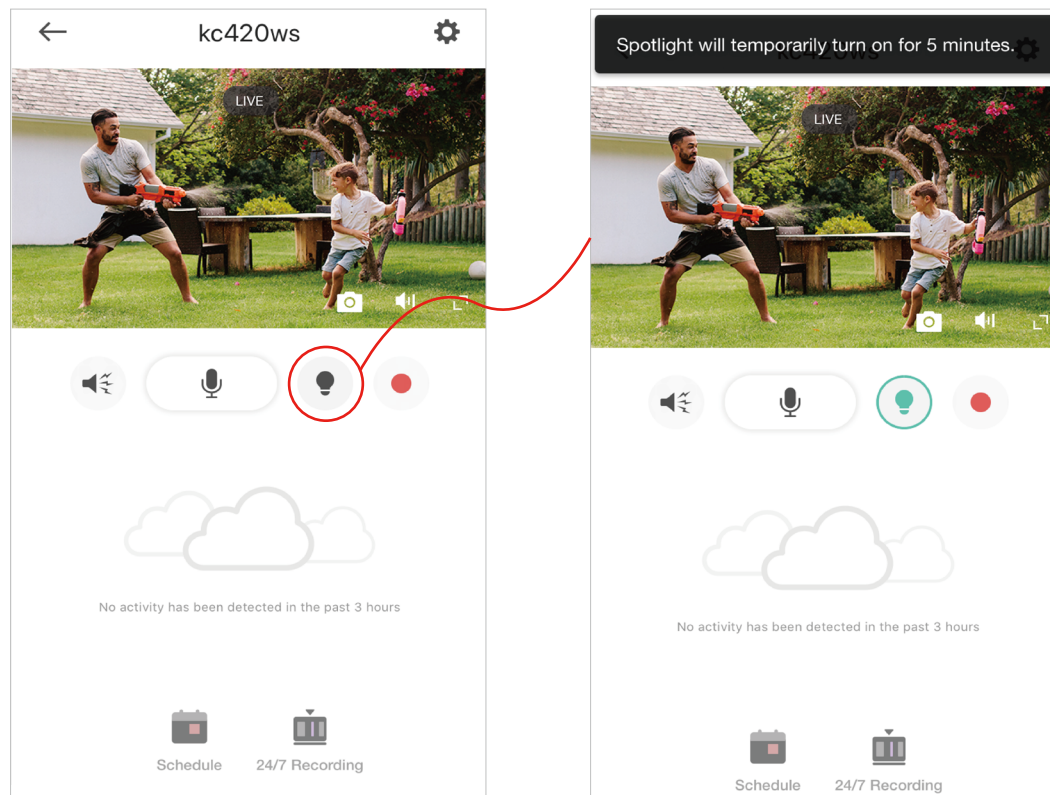
In the Live View page, tap . You will see recorded videos.



Turn On/Off Spotlight Temporarily

You can turn on/off spotlight temporarily in the Live View page. You can also customize the temporary period in Device Settings.


In the Live View page, tap  to turn on/off spotlight temporarily. To change the temporary period, go to [Device Settings](#) > [Spotlight Settings](#).

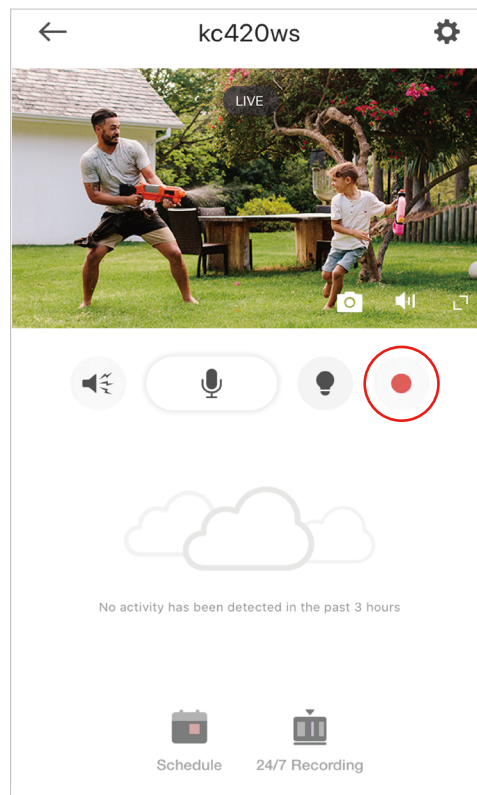



Screen Recording

Quickly record what interests you in Live View.

Note: This feature is currently exclusive to Kasa Care subscribers.

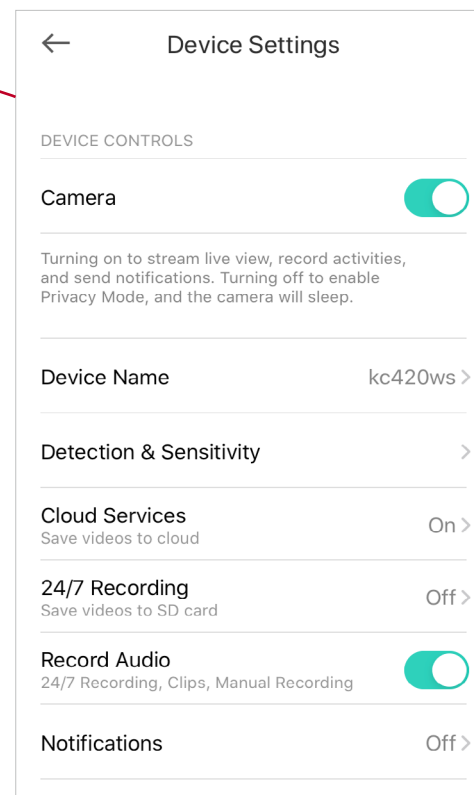
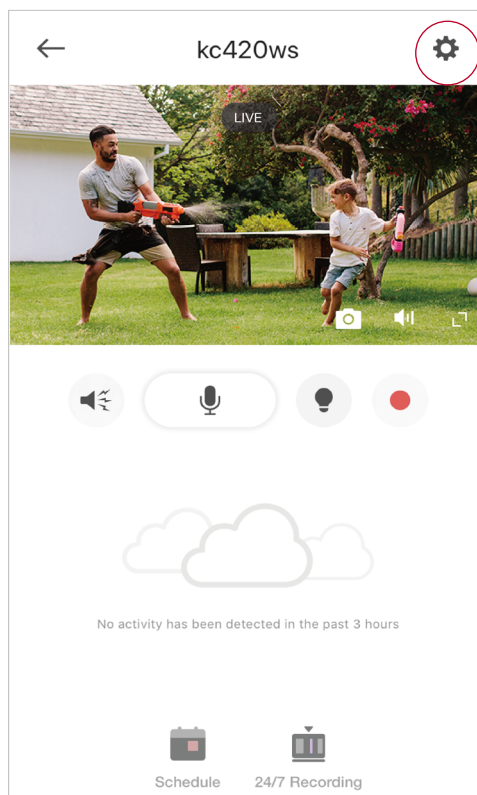
In the Live View page, tap  to record the live view. The clips will be saved to [Activity](#).



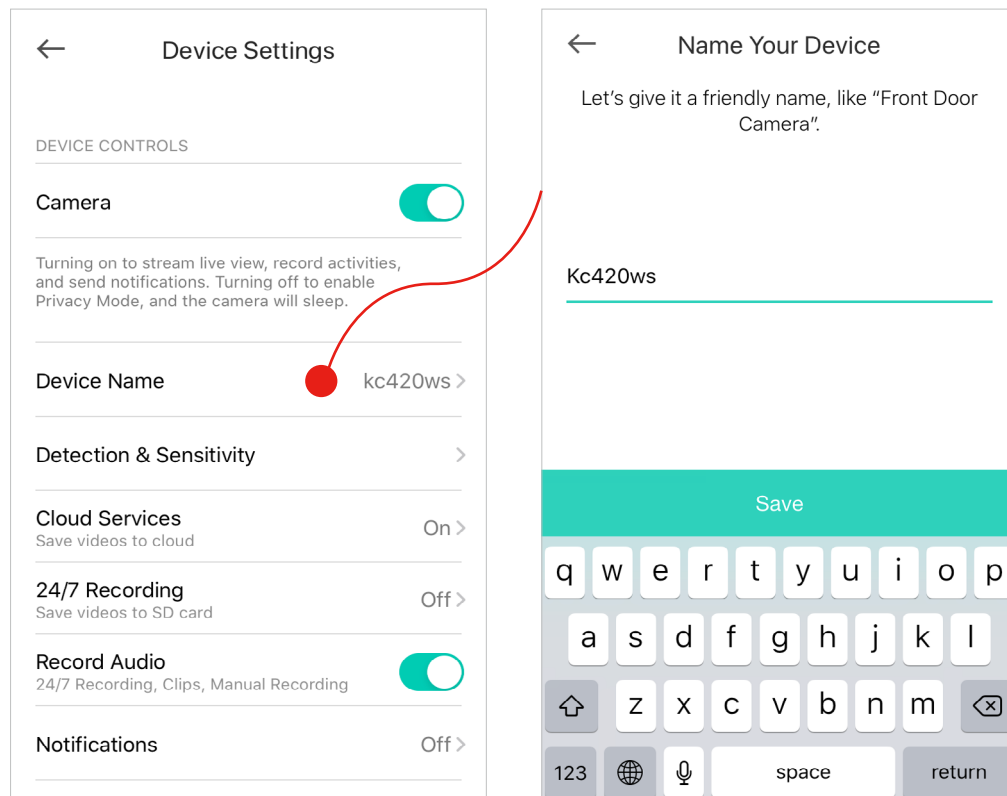
1. In the live view page, tap  to go to Device Settings page.

2. Turn on or off the camera.

When **Camera** is turned off, it means privacy mode is enabled. You can turn the camera off when you do not want your camera to stream live view and record videos.



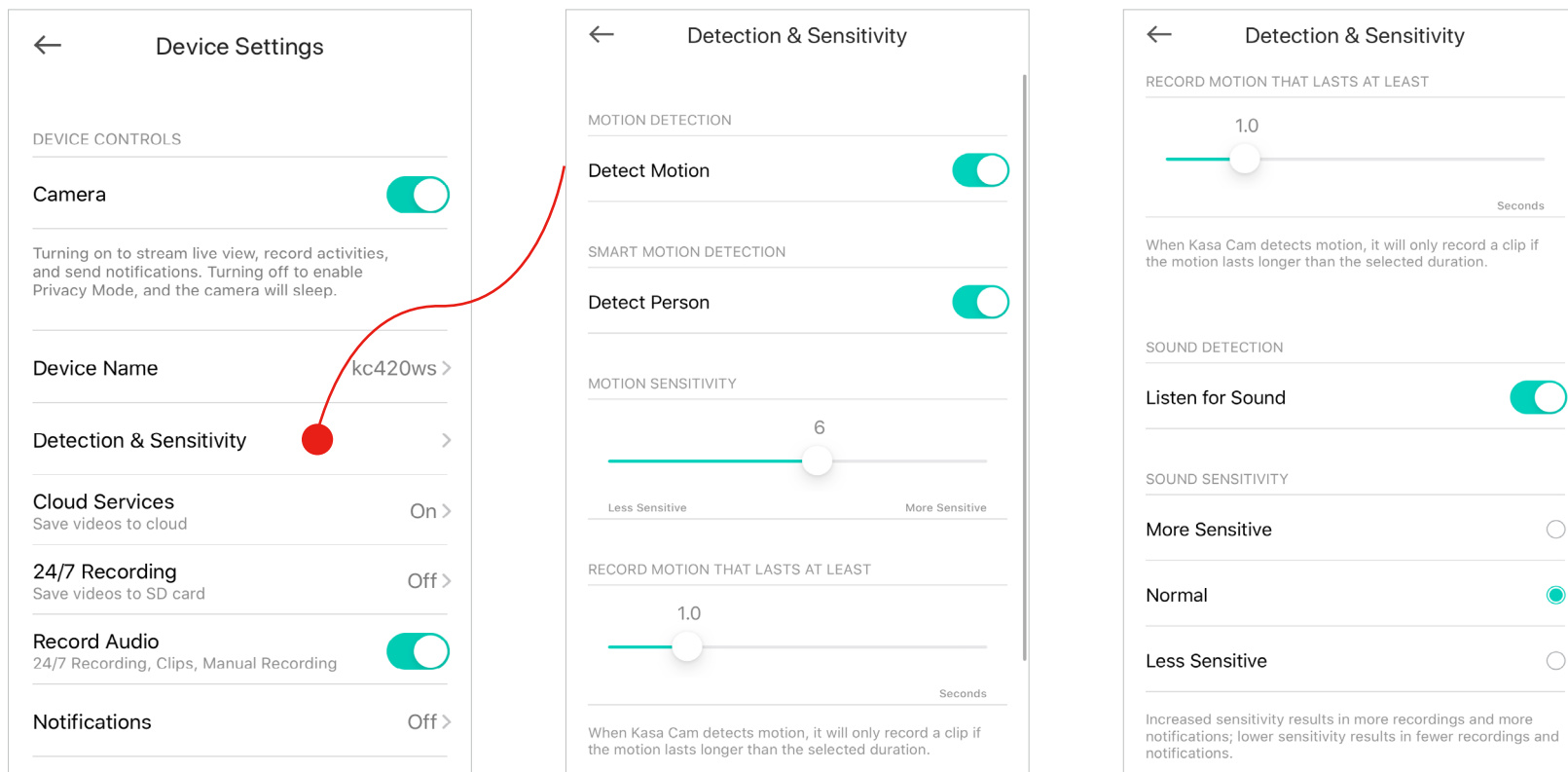
3. Edit device name.



4. Set detection and sensitivity for recording videos.

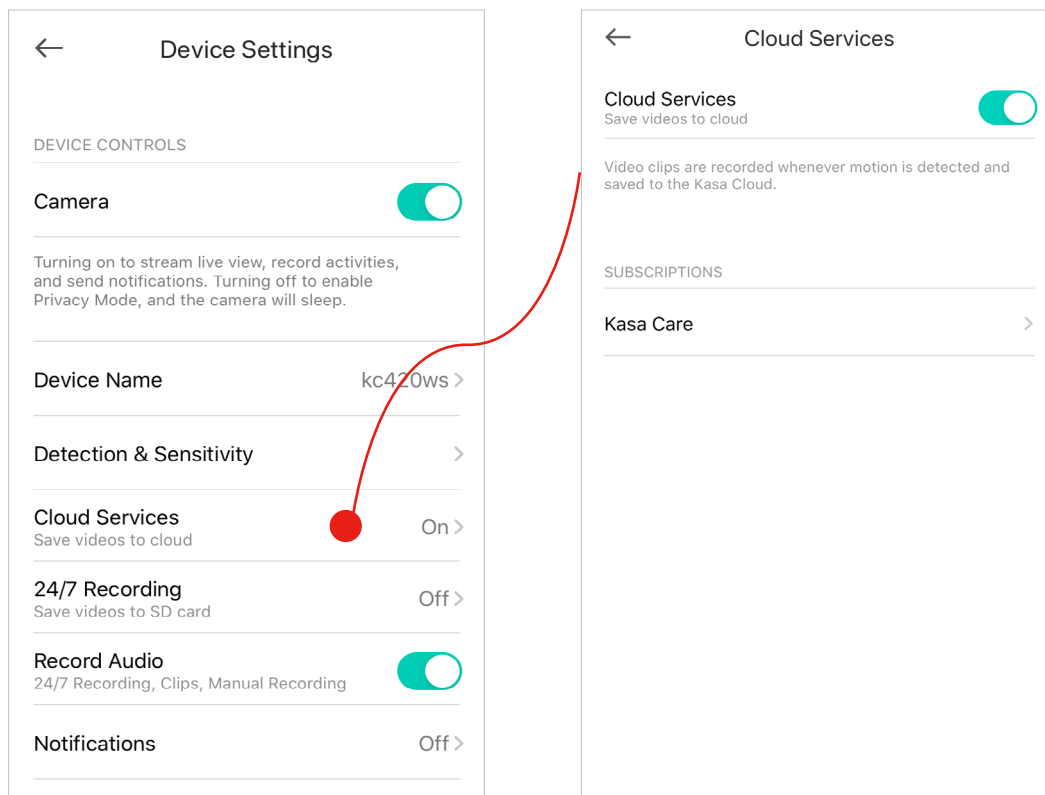
Enable [Detect Motion](#) / [Detect Person](#) if you want your camera to record when motion / person is detected. Also set the sensitivity of detection.

Enable [Listen for Sound](#) if you want you camera to record when sound is detected and set its sensitivity.



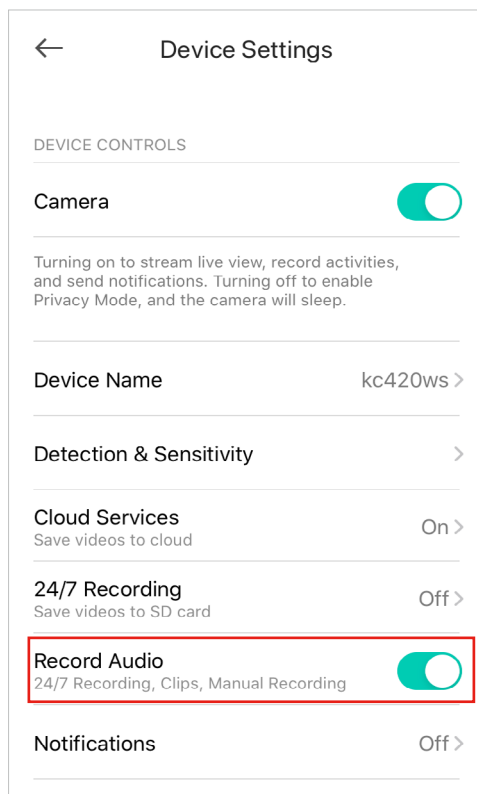
5. Enjoy cloud service.

Enable [Cloud Services](#) if you want to save the videos recorded by your camera to the cloud. Then subscribe to the Kasa Care plans to save videos to the cloud. Kasa offers unlimited cloud storage.



6. Choose whether to record audio.

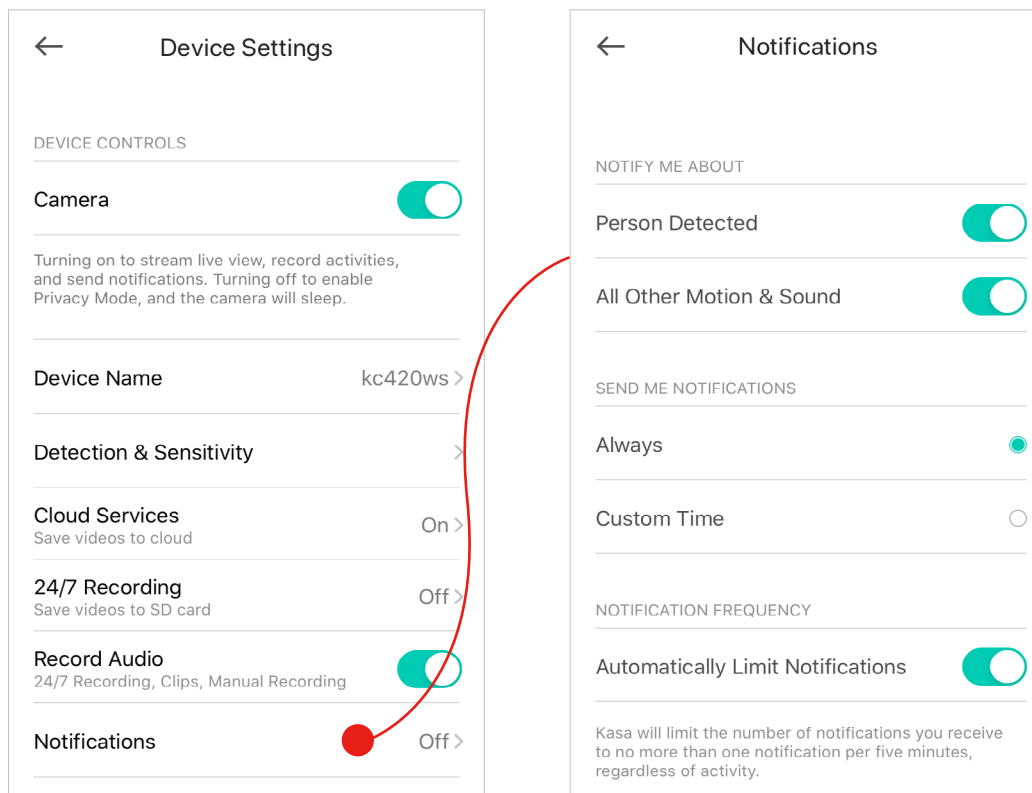
Enable [Record Audio](#) if you want to also record sound during recording.



7. Choose whether to receive notifications.

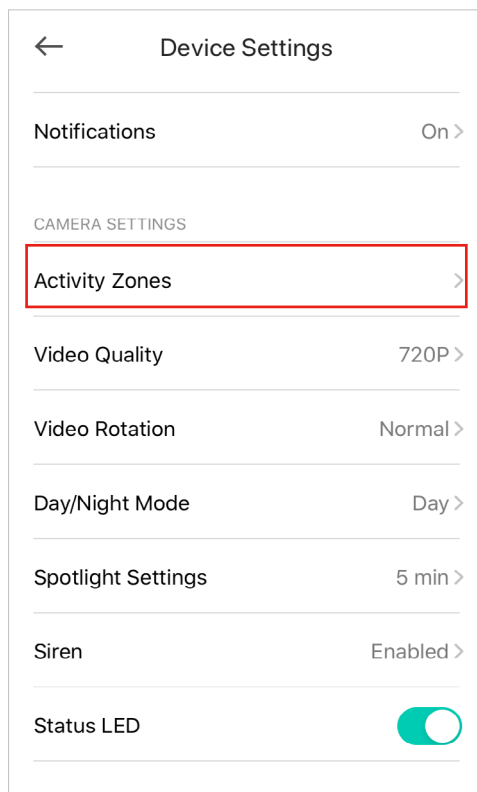
Enable [Person Detected / All Other Motion & Sound](#) if you want to be notified when person / all other motion and sound is detected. You can also select the time when you want to receive notifications.

If you don't want to be bothered by frequent notifications, enable [Automatically Limit Notifications](#).



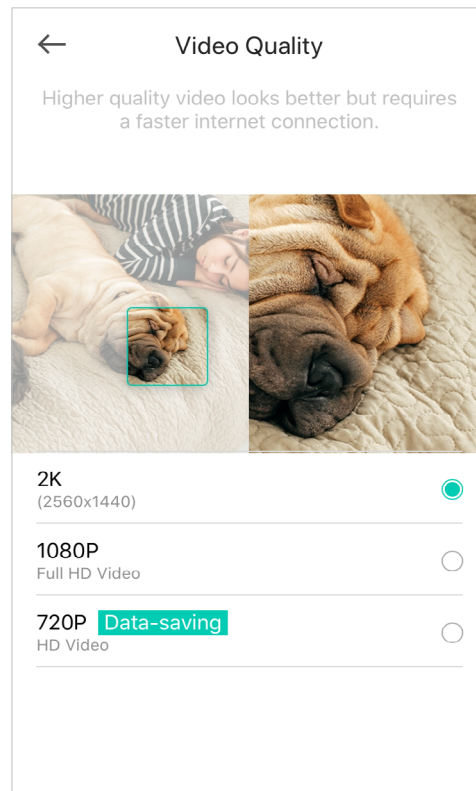
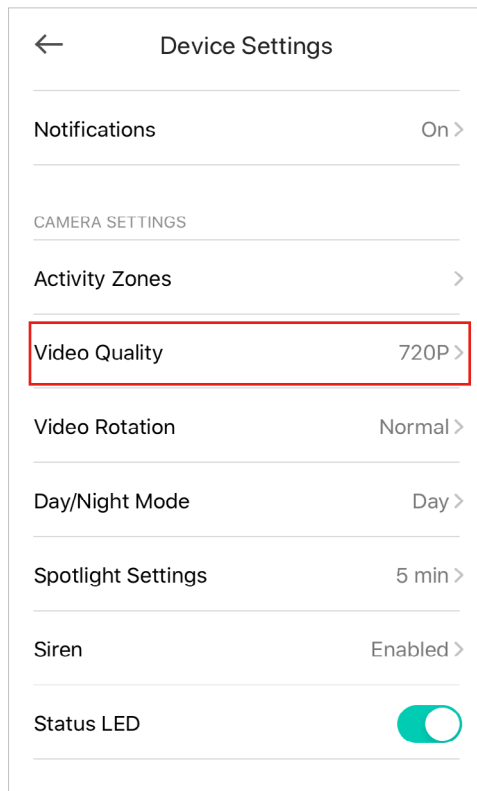
8. Set activity zones.

Control what alerts you by creating multiple custom activity zones around areas that are important to you

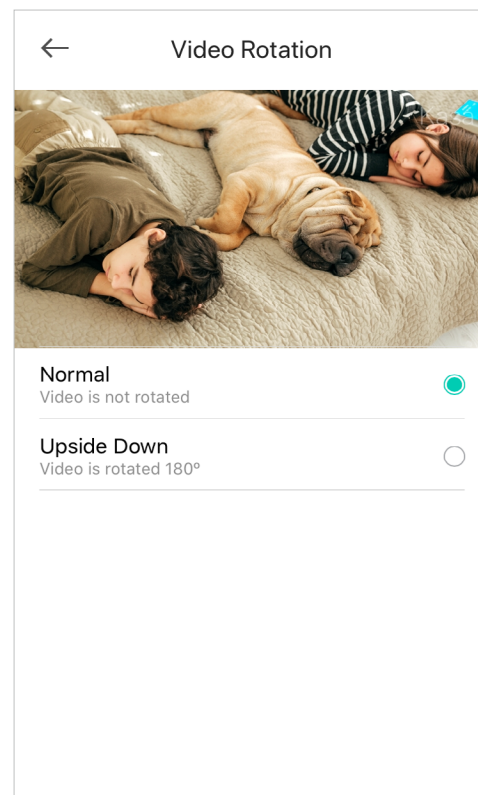
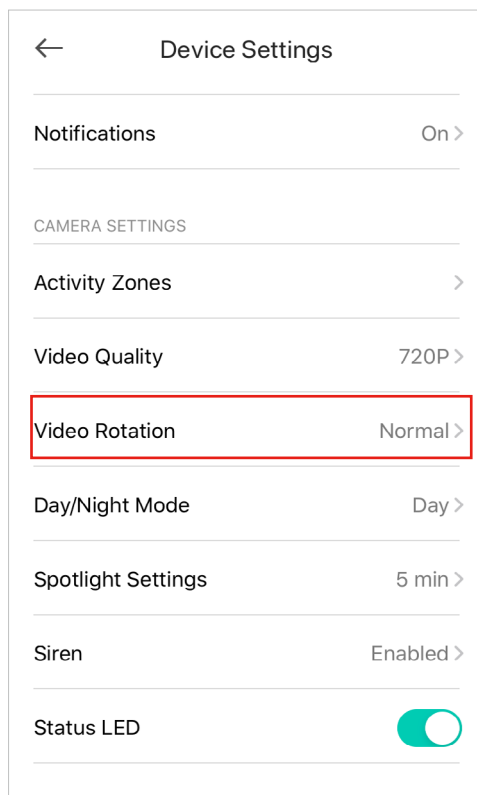


9. Choose the resolution for videos.

The highest quality looks better but requires faster internet connection and larger size for saving the videos.



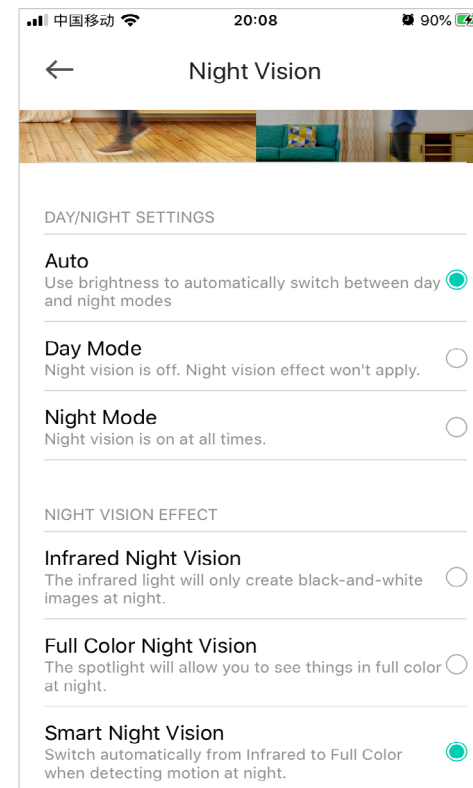
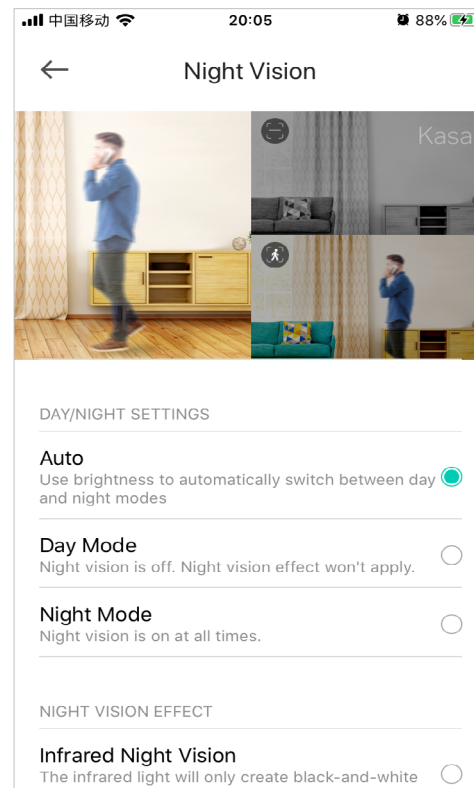
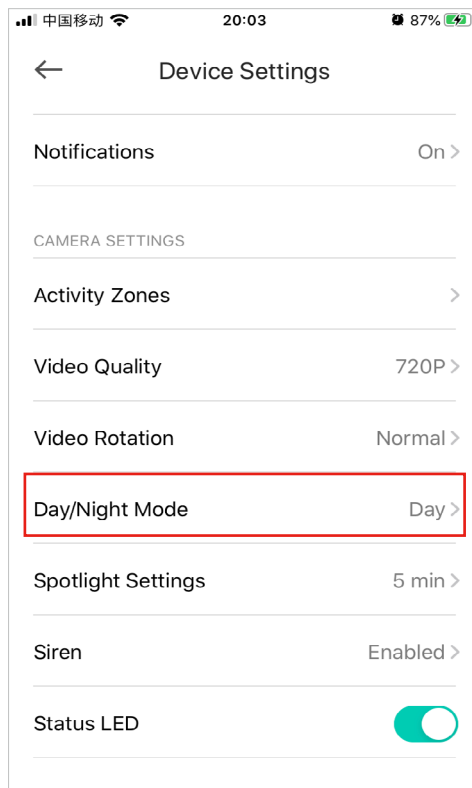
10. Choose whether to rotate the video.



11. Set Day/Night Mode.

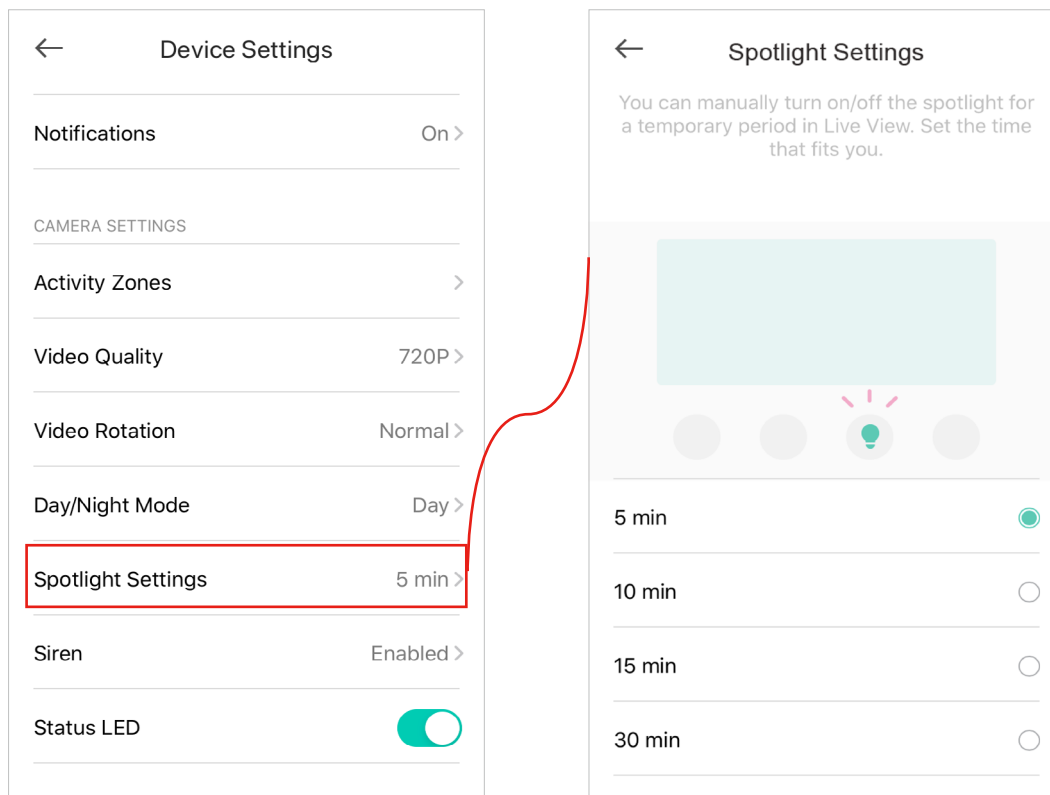
Choose the day/night mode you want, i.e., when you want the night vision to be on. You can choose **Auto** to turn on night mode automatically in low light conditions and turn off in daylight.

If you choose **Auto** or **Night Mode**, you can customize the night vision effect - only **infrared** vision, or **full color** vision, or **smart night vision** that switches from infrared to full color when motion is detected.

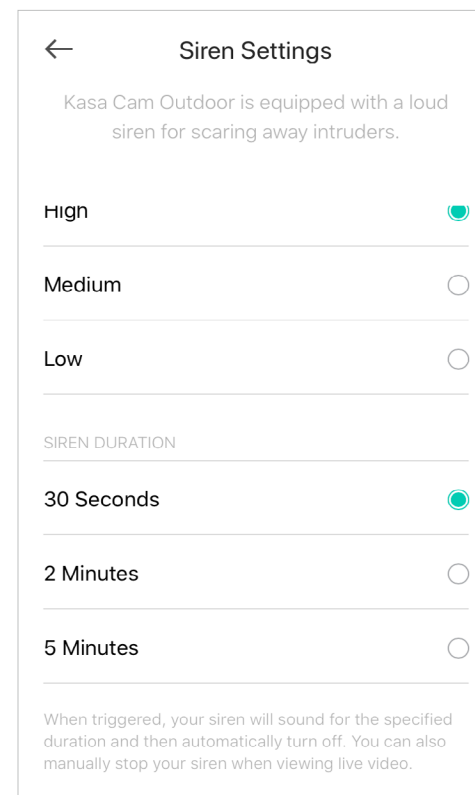
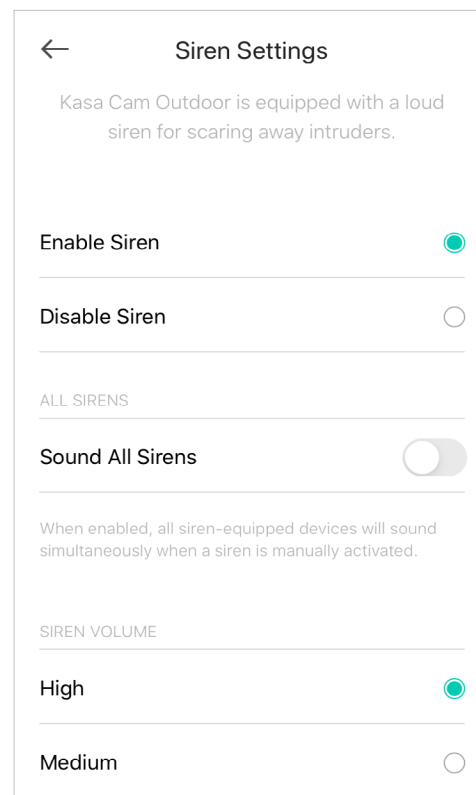
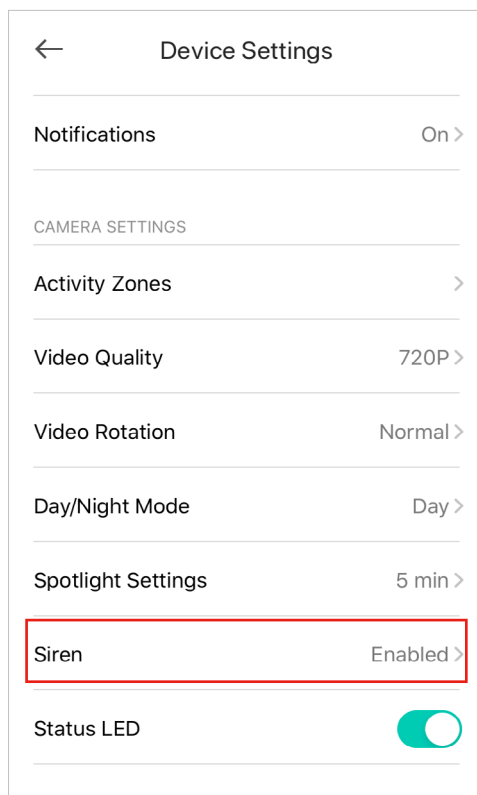


12. Spotlight settings.

You can temporarily turn on/off the spotlight in Live View. Here you can customize the temporary period.

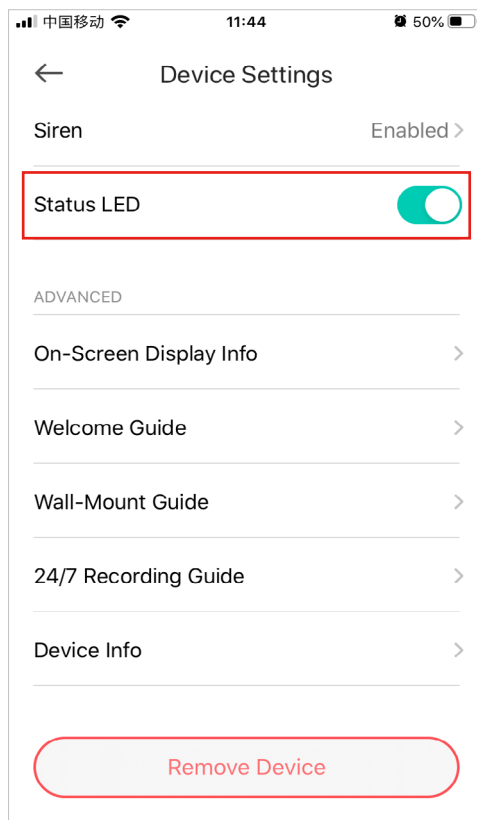


13. Set siren to scare away intruders.



14. Turn on/off Status LED.

Turn on or off the status LED on the camera.



Reset Your Kasa Cam Outdoor

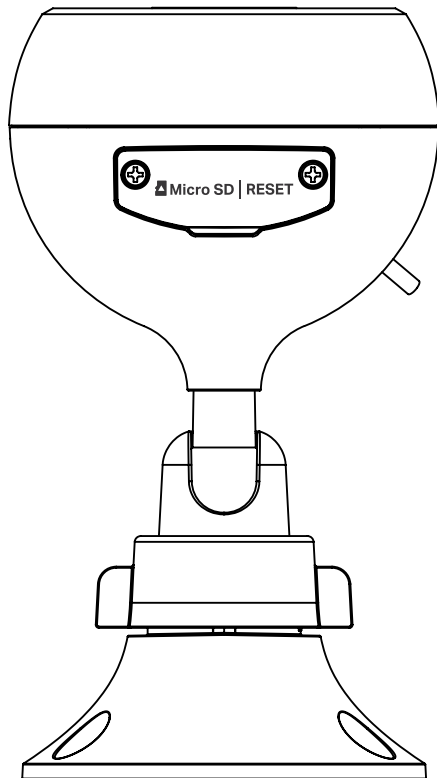
TP-Link provides three methods to reset your Kasa Cam Outdoor.

Method 1

Remove the cover.

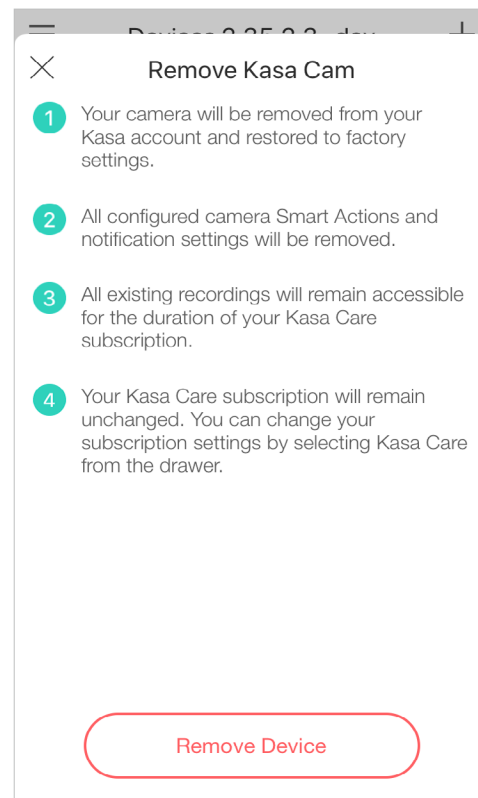
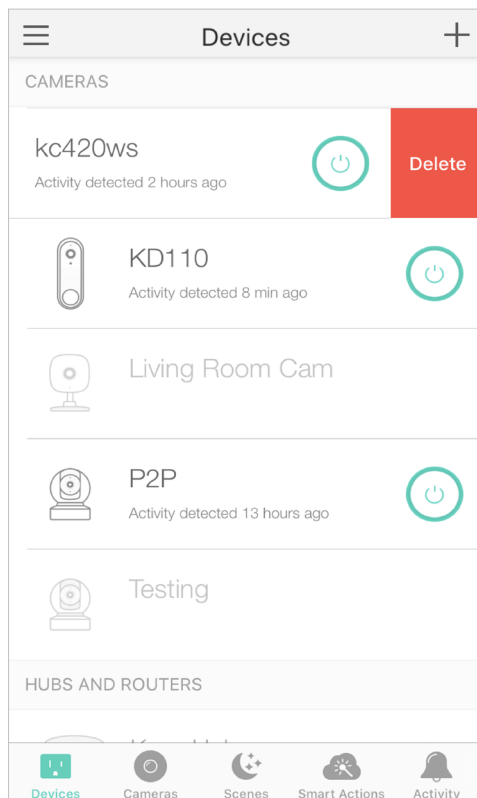
Use a pin to press and hold the Reset button for **3-15s** to reset Wi-Fi connection.

Use a pin to press and hold the Reset button for **over 15s** to restore to factory default settings. .



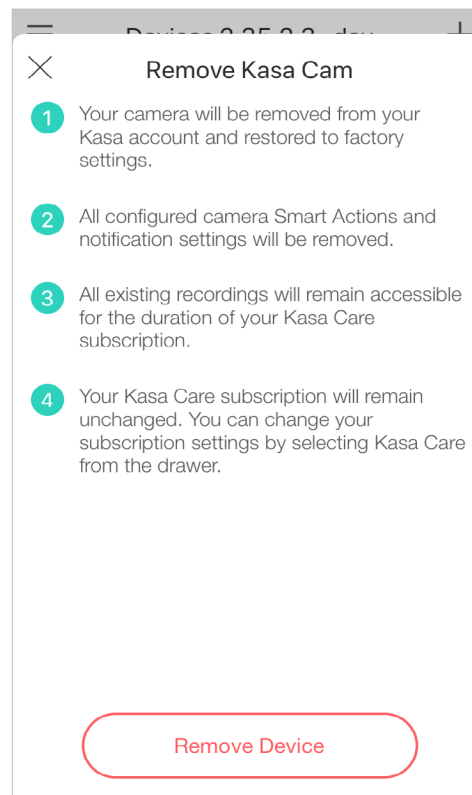
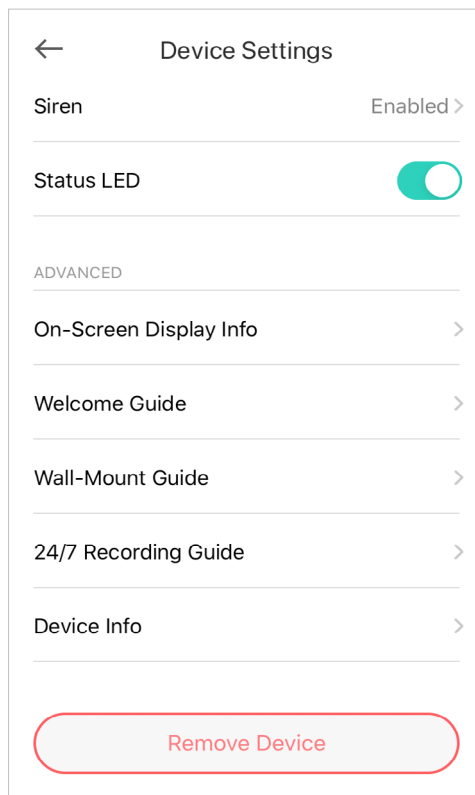
Method 2

Swipe left your camera on the [Devices](#) page and tap [Delete](#). Then tap [Remove Device](#). Your camera will be removed from your Kasa account and restored to factory settings.




Method 3

Tap your camera and go to the [Devices Settings](#) page. Then tap [Remove Device](#) in the bottom. Your camera will be removed from your Kasa account and restored to factory settings.

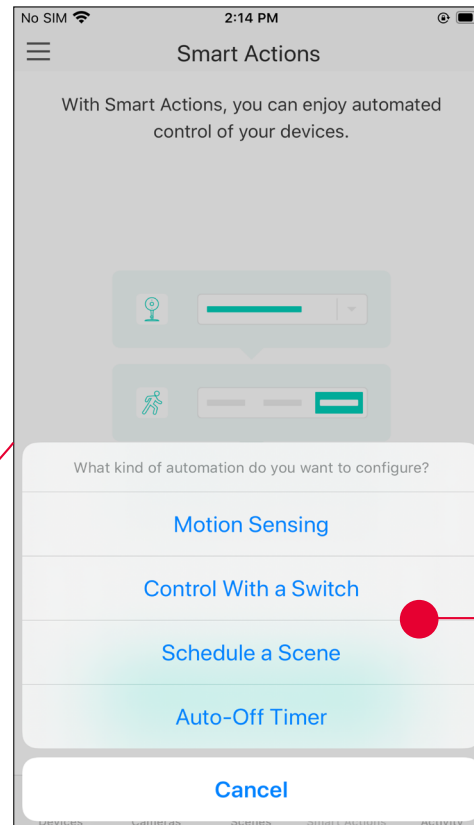
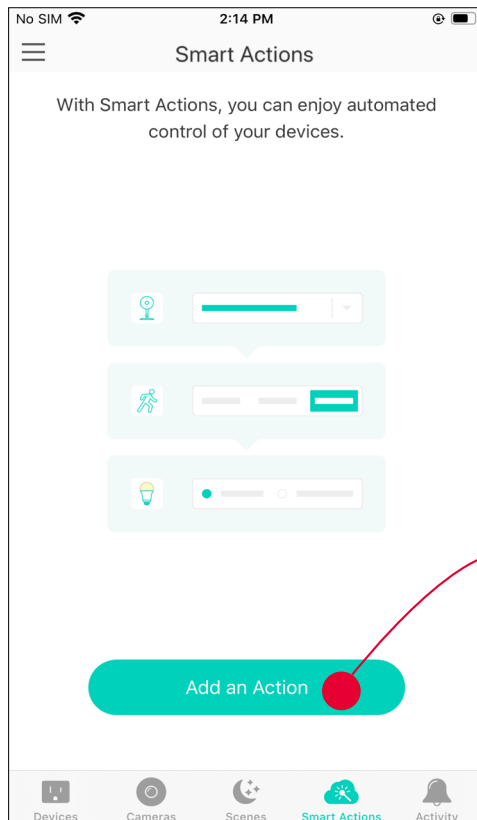


Smart Actions - Motion Sensing

Smart Actions is a function provided that allows device interconnections and home automations. With Smart Actions, your Kasa devices can work together to create a smarter smart home. From the moment you wake up to the moment you drift asleep, Smart Actions make your home safer and more comfortable. There are four types of smart actions. For your Kasa Cam Outdoor, you can set Motion Sensing action.

1. Tap  at the bottom, then tap **Add an Action**.

2. Select an automation type for your Smart Actions. Here we choose **Motion Sensing**.



Motion Sensing: Take actions when a Kasa camera senses a motion.

Control With a Switch: Extend the Smart Switch control to other Kasa Smart devices. Turn on/off a group of devices with the Smart Switch all together.

Schedule a Scene: Schedule a "Scene" to be turned on automatically at the time specified.

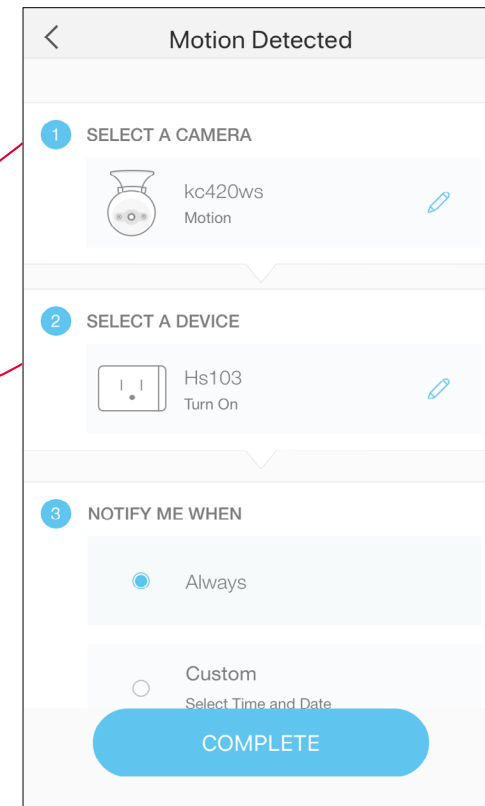
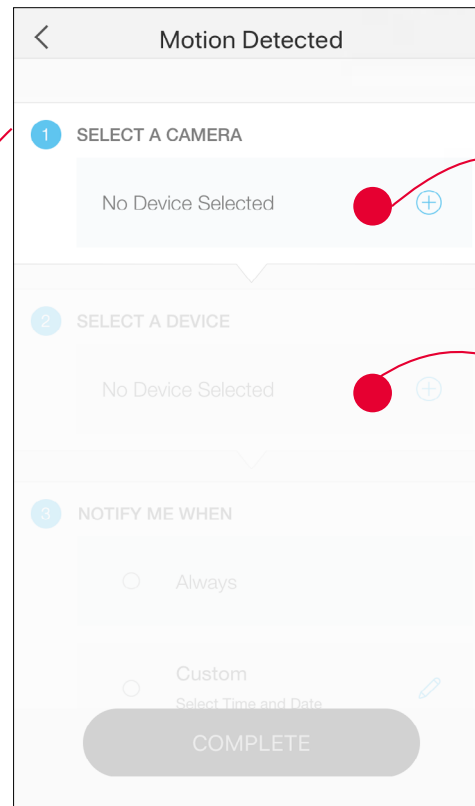
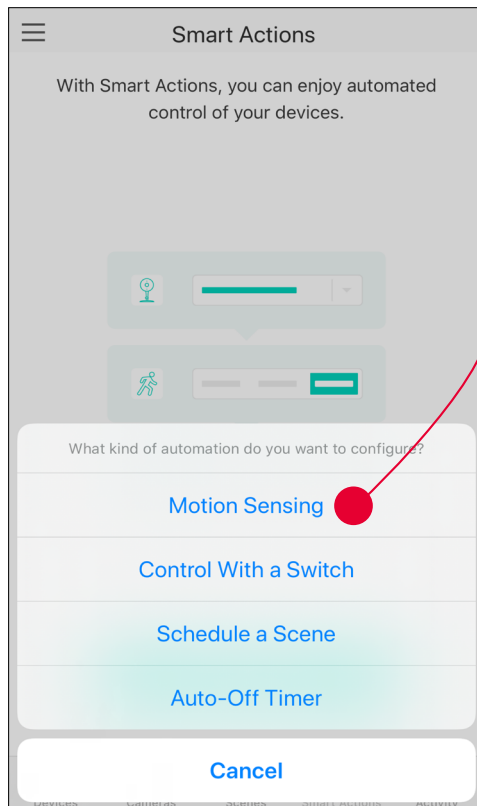
Auto-off Timer: Whenever a smart device is turned on, turn it off after the designated amount of time.

Configure Motion Sensing if you also have another Kasa smart device

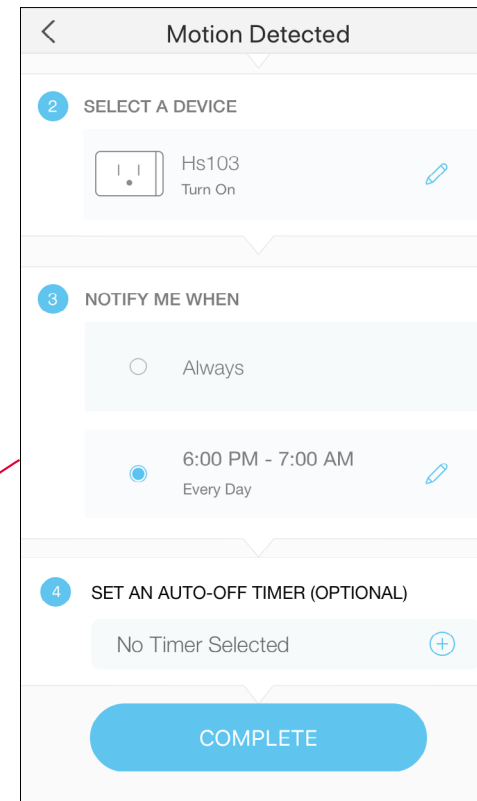
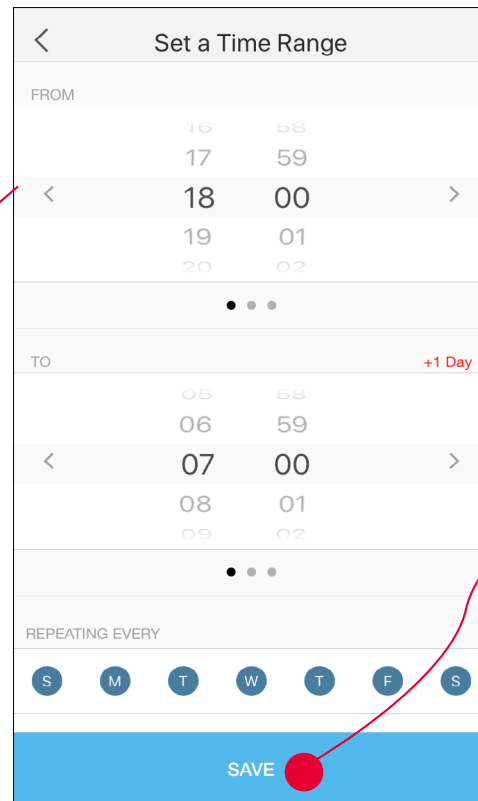
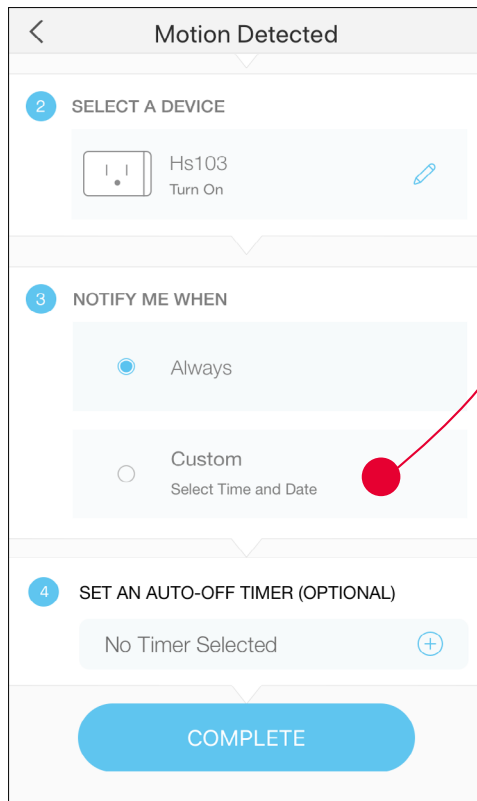
E.g. I want to turn on light (which is plugged into a Kasa smart plug) when my camera senses a motion.

1. Tap [Motion Sensing](#).

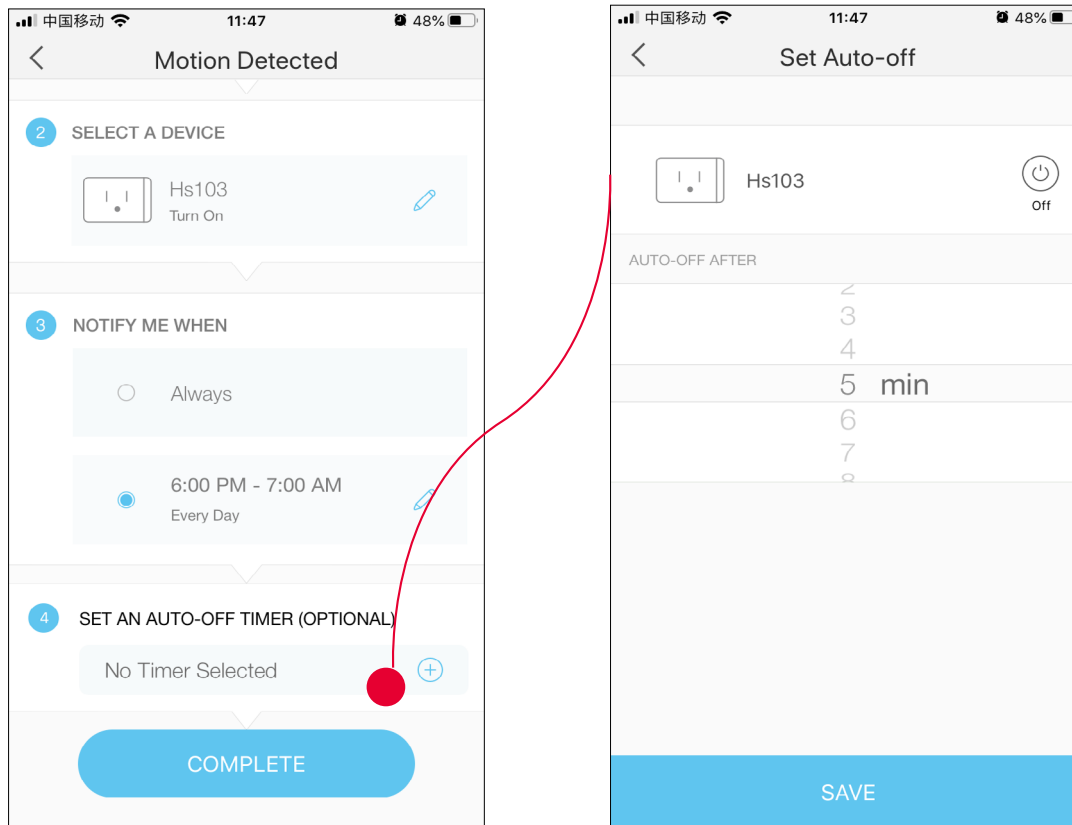
2. Select your camera and plug.



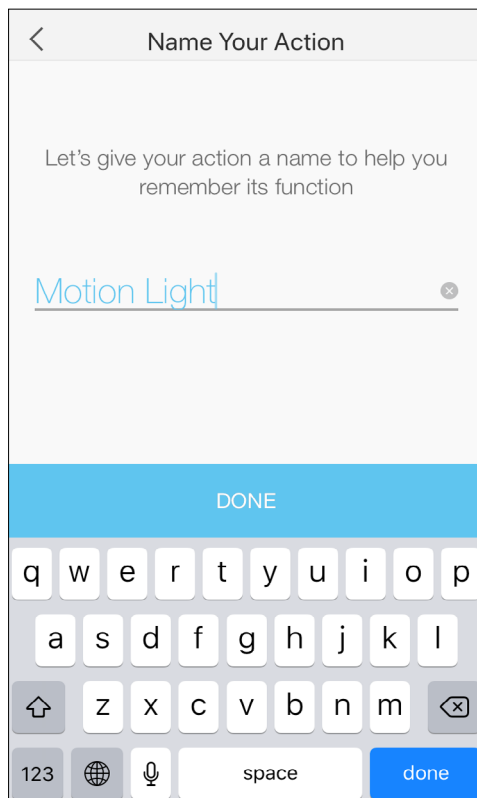
3. Set the time when you want the action to run. You can choose [Always](#) or tap [Custom](#) to choose time according to your needs.



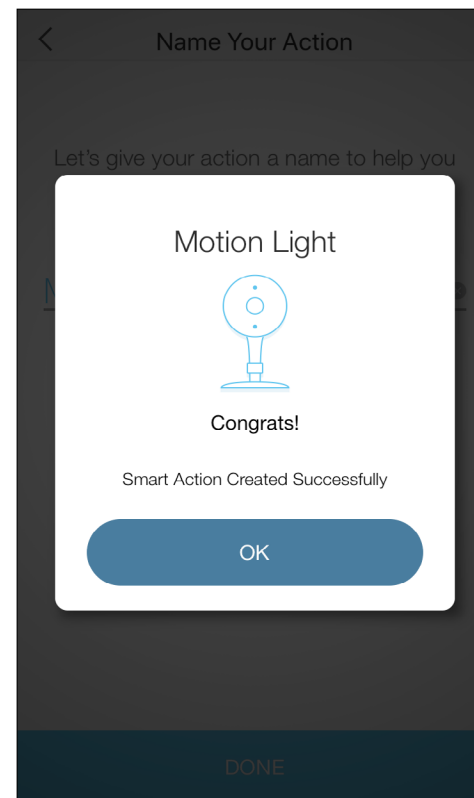
4. (Optional) Set an auto-off timer then tap **Complete**. Then your light will be turned off after the time you set.



5. Name your action for easy identification.



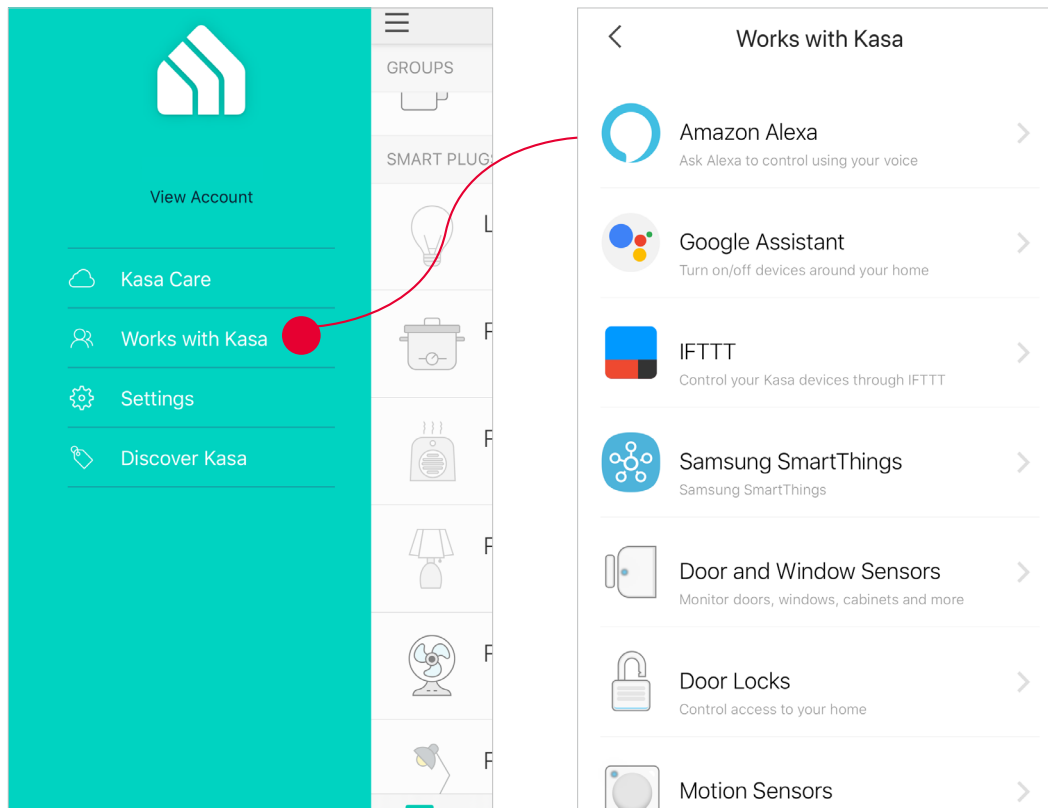
6. The Smart Action is created successfully and displayed in the Smart Actions list.



Voice & Third-Party Support

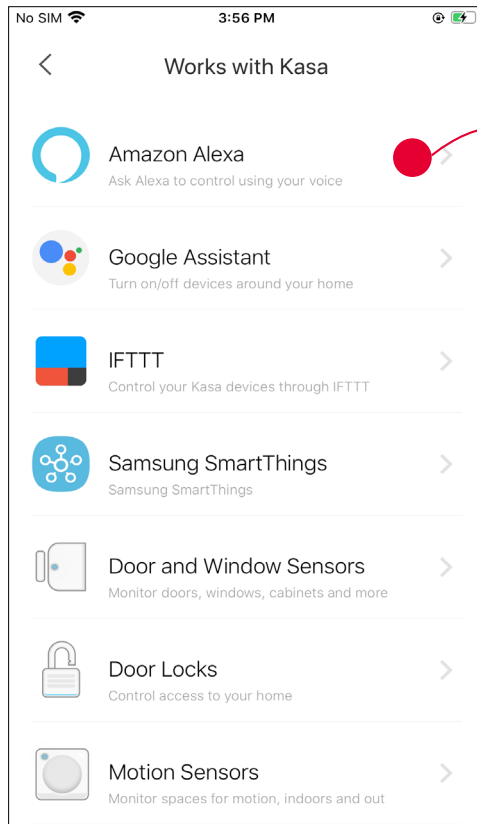
Use the Kasa Smart app to pair your camera with Amazon Alexa or Google Home Assistant, and enjoy a full hands-free experience. Kasa helps manage the rest of your smart home too, working with Samsung SmartThings to trigger changes when you arrive home or leave for the day.

Launch the **Kasa Smart** app. Go to the sidebar and tap **Works with Kasa**. You can choose [Amazon Alexa](#) / [Google Assistant](#) / [IFTTT](#) / [Samsung SmartThings](#) for detailed instructions.

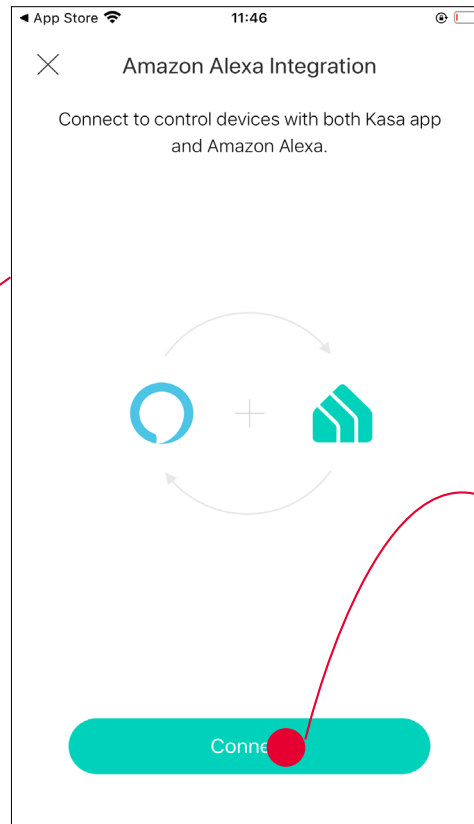


1. Set up Amazon Alexa

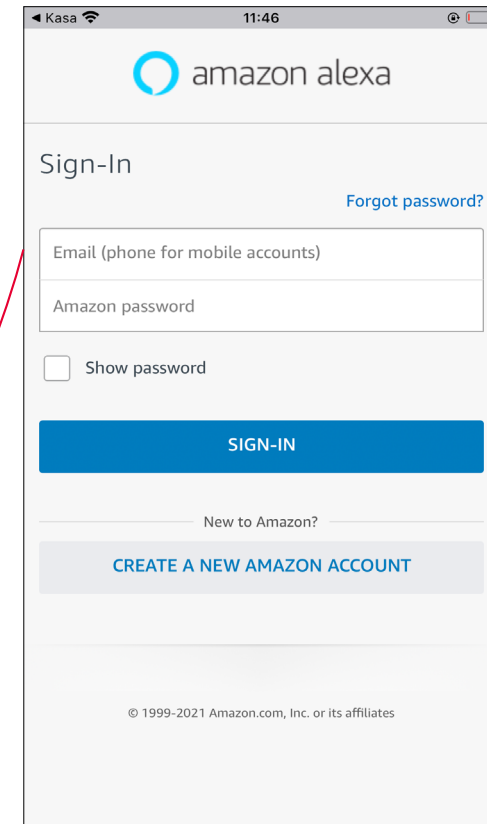
1. Tap [Amazon Alexa](#).



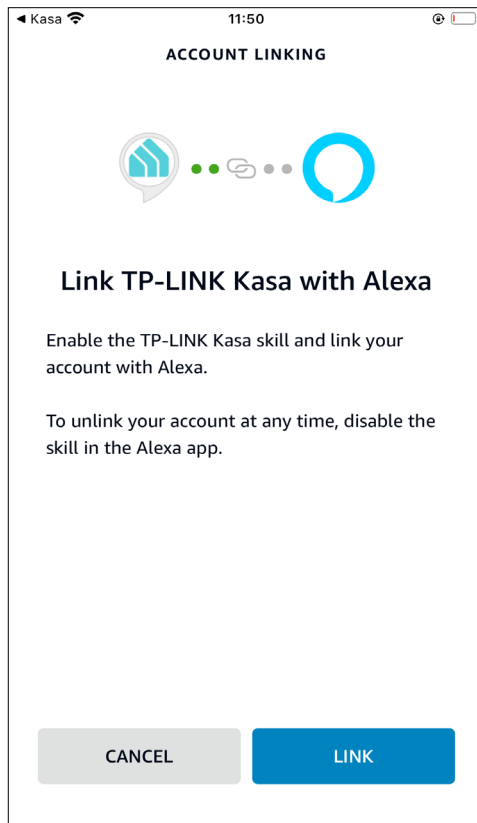
2. Tap [Connect](#).



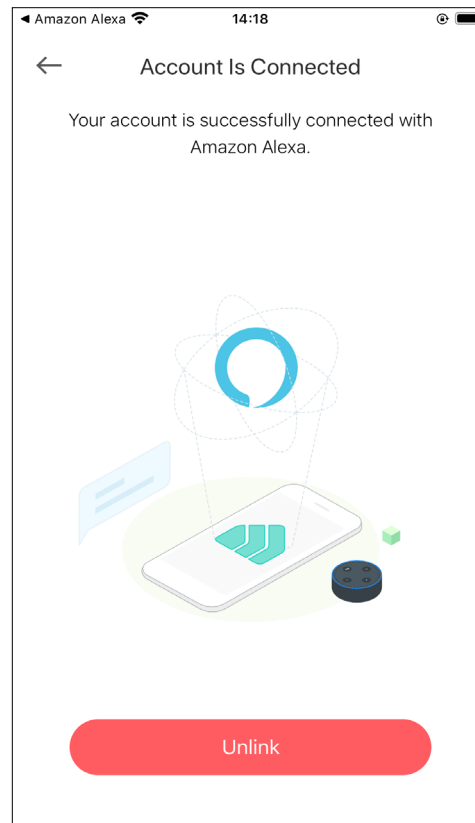
3. Sign in with your amazon account.



3. After sign-in, tap **LINK**.

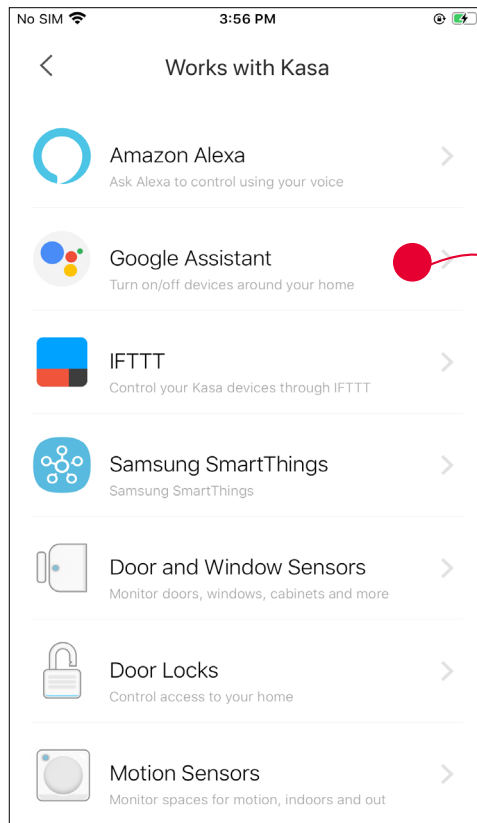


4. Your TP-Link ID has been successfully linked with your amazon account. You can stream the camera videos to Amazon Echo Show or Fire TV using simple voice commands.



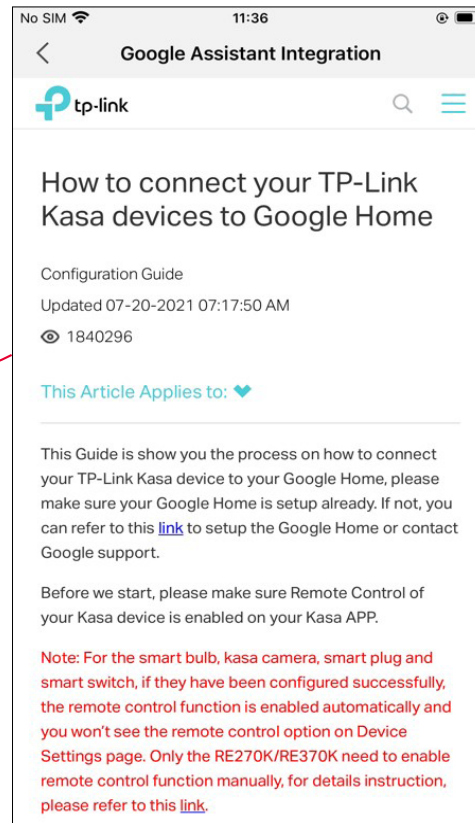
2. Set up Google Assistant

1. Tap [Google Assistant](#).



2. Follow instructions to connect your device to your Google Home.

Or find the FAQ at <https://www.tp-link.com/en/support/faq/1534/>.



Authentication

FCC compliance information statement



Product Name: Kasa Cam Outdoor, 24/7 Recording

Model Number: KC420WS

Component Name	Model	FCC Identifier number
AC Power Adapter	A8-501000	NA

Responsible Party:

TP-Link USA Corporation

Address: 10 Mauchly, Irvine, CA 92618

Website: <https://www.tp-link.com/us/>

Tel: +1 626 333 0234

Fax: +1 909 527 6804

E-mail: sales.usa@tp-link.com

This equipment has been tested and found to comply with the limits for a Class B digital device, pursuant to part 15 of the FCC Rules. These limits are designed to provide reasonable protection against harmful interference in a residential installation. This equipment generates, uses and can radiate radio frequency energy and, if not installed and used in accordance with the instructions, may cause harmful interference to radio communications. However, there is no guarantee that interference will not occur in a particular installation. If this equipment does cause harmful interference to radio or television reception, which can be determined by turning the equipment off and on, the user is encouraged to try to correct the interference by one or more of the following measures:

- Increase the separation between the equipment and receiver.
- Connect the equipment into an outlet on a circuit different from that to which the receiver is connected.
- Consult the dealer or an experienced radio/ TV technician for help.

This device complies with part 15 of the FCC Rules. Operation is subject to the following two conditions:

1. This device may not cause harmful interference.

2. This device must accept any interference received, including interference that may cause undesired operation.

Any changes or modifications not expressly approved by the party responsible for compliance could void the user's authority to operate the equipment.

Note: The manufacturer is not responsible for any radio or TV interference caused by unauthorized modifications to this equipment. Such modifications could void the user's authority to operate the equipment.

FCC RF Radiation Exposure Statement

This equipment complies with FCC RF radiation exposure limits set forth for an uncontrolled environment. This device and its antenna must not be co-located or operating in conjunction with any other antenna or transmitter.

"To comply with FCC RF exposure compliance requirements, this grant is applicable to only Mobile Configurations. The antennas used for this transmitter must be installed to provide a separation distance of at least 20 cm from all persons and must not be co-located or operating in conjunction with any other antenna or transmitter."

We, **TP-Link USA Corporation**, has determined that the equipment shown as above has been shown to comply with the applicable technical standards, FCC part 15. There is no unauthorized change is made in the equipment and the equipment is properly maintained and operated.

Issue Date: 2022-01-18

FCC compliance information statement**Product Name: AC Power Adapter****Model Number: A8-501000****Responsible Party:****TP-Link USA Corporation**

Address: 10 Mauchly, Irvine, CA 92618

Website: <https://www.tp-link.com/us/>

Tel: +1 626 333 0234

Fax: +1 909 527 6804

E-mail: sales.usa@tp-link.com

This equipment has been tested and found to comply with the limits for a Class B digital device, pursuant to part 15 of the FCC Rules. These limits are designed to provide reasonable protection against harmful interference in a residential installation. This equipment generates, uses and can radiate radio frequency energy and, if not installed and used in accordance with the instructions, may cause harmful interference to radio communications. However, there is no guarantee that interference will not occur in a particular installation. If this equipment does cause harmful interference to radio or television reception, which can be determined by turning the equipment off and on, the user is encouraged to try to correct the interference by one or more of the following measures:

- Increase the separation between the equipment and receiver.
- Connect the equipment into an outlet on a circuit different from that to which the receiver is connected.
- Consult the dealer or an experienced radio/ TV technician for help.

This device complies with part 15 of the FCC Rules. Operation is subject to the following two conditions:

1. This device may not cause harmful interference.
2. This device must accept any interference received, including interference that may cause undesired operation.

Any changes or modifications not expressly approved by the party responsible for compliance could void the user's authority to operate the equipment.

We, **TP-Link USA Corporation**, has determined that the equipment shown as above has been shown to comply with the applicable technical standards, FCC part 15. There is no unauthorized change is made in the equipment and the equipment is properly maintained and operated.

Issue Date: 2022-01-18

CE Mark Warning



This is a class B product. In a domestic environment, this product may cause radio interference, in which case the user may be required to take adequate measures.

OPERATING FREQUENCY (the maximum transmitted power)

2400MHz~2483.5MHz / 20dBm

No restrictions exist in the use of radio frequencies or frequency bands in all EU member states and EFTA countries.

EU Declaration of Conformity

TP-Link hereby declares that the device is in compliance with the essential requirements and other relevant provisions of directives 2014/53/EU, 2009/125/EC, 2011/65/EU and (EU)2015/863.

The original EU declaration of conformity may be found at <https://www.tp-link.com/en/ce>

RF Exposure Information

This device meets the EU requirements (2014/53/EU Article 3.1a) on the limitation of exposure of the general public to electromagnetic fields by way of health protection.

The device complies with RF specifications when the device used at 20 cm from your body.

UKCA Mark



TP-Link hereby declares that the device is in compliance with the essential requirements and other relevant provisions of the Radio Equipment Regulations 2017.

The original UK declaration of conformity may be found at <https://www.tp-link.com/support/ukca>

Canadian Compliance Statement

This device contains licence-exempt transmitter(s)/receiver(s) that comply with Innovation, Science and Economic Development Canada's licence-exempt RSS(s). Operation is subject to the following two conditions:

1. This device may not cause interference.
2. This device must accept any interference, including interference that may cause undesired operation of the device.

L'émetteur/récepteur exempt de licence contenu dans le présent appareil est conforme aux CNR d'Innovation, Sciences et Développement économique Canada applicables aux appareils radio exempts de licence. L'exploitation est autorisée aux deux conditions suivantes :

1. l'appareil ne doit pas produire de brouillage;
2. l'utilisateur de l'appareil doit accepter tout brouillage radioélectrique subi, même si le brouillage est susceptible d'en compromettre le fonctionnement

Radiation Exposure Statement:

This equipment complies with IC radiation exposure limits set forth for an uncontrolled environment. This equipment should be installed and operated with minimum distance 20cm between the radiator & your body.

Déclaration d'exposition aux radiations:

Cet équipement est conforme aux limites d'exposition aux rayonnements IC établies pour un environnement non contrôlé. Cet équipement doit être installé et utilisé avec un minimum de 20 cm de distance entre la source de rayonnement et votre corps.

Industry Canada Statement

CAN ICES-3 (B)/NMB-3(B)

Korea Warning Statements:

당해 무선설비는 운용중 전파혼신 가능성이 있음.

NCC Notice & BSMI Notice:

注意!

取得審驗證明之低功率射頻器材，非經核准，公司、商號或使用者均不得擅自變更頻率、加大功率或變更原設計之特性及功能。

低功率射頻器材之使用不得影響飛航安全及干擾合法通信；經發現有干擾現象時，應立即停用，並改善至無干擾時方得繼續使用。

前述合法通信，指依電信管理法規定作業之無線電通信。

低功率射頻器材須忍受合法通信或工業、科學及醫療用電波輻射性電機設備之干擾。

安全諮詢及注意事項

- 請使用原裝電源供應器或只能按照本產品注明的電源類型使用本產品。
- 清潔本產品之前請先拔掉電源線。請勿使用液體、噴霧清潔劑或濕布進行清潔。
- 注意防潮，請勿將水或其他液體潑灑到本產品上。
- 插槽與開口供通風使用，以確保本產品的操作可靠並防止過熱，請勿堵塞或覆蓋開口。
- 請勿將本產品置放於靠近熱源的地方。除非有正常的通風，否則不可放在密閉位置中。
- 不要私自拆開機殼或自行維修，如產品有故障請與原廠或代理商聯繫。

限用物質含有情況標示聲明書

設備名稱： Equipment name Kasa Cam Outdoor, 24/7 Recording		型號（型式）： Type designation (Type) KC420WS				
單元 Unit	限用物質及其化學符號 Restricted substances and its chemical symbols					
	鉛 Lead (Pb)	汞 Mercury (Hg)	鎘 Cadmium (Cd)	六價鉻 Hexavalent chromium (Cr+6)	多溴聯苯 Polybrominated biphenyls (PBB)	多溴二苯醚 Polybrominated diphenyl ethers (PBDE)
PCB	○	○	○	○	○	○
外殼	○	○	○	○	○	○
電源供應器	—	○	○	○	○	○
其他及其配件	—	○	○	○	○	○

備考 1. “超出 0.1 wt %” 及 “超出 0.01 wt %” 係指限用物質之百分比含量超出百分比含量基準值
Note 1: “Exceeding 0.1 wt %” and “exceeding 0.01 wt %” indicate that the percentage content of the restricted substance exceeds the reference percentage value of presence condition.
備考 2. “○” 係指該項限用物質之百分比含量未超出百分比含量基準值。
Note 2: “○” indicates that the percentage content of the restricted substance does not exceed the percentage of reference value of presence.
備考 3. “—” 係指該項限用物質為排除項目。
Note 3: The “—” indicates that the restricted substance corresponds to the exemption.



Продукт сертифіковано згідно з правилами системи УкрСЕПРО на відповідність вимогам нормативних документів та вимогам, що передбачені чинними законодавчими актами України.

EAC

Safety Information


- Keep the device away from fire or hot environments. DO NOT immerse in water or any other liquid.
- Do not attempt to disassemble, repair, or modify the device.
- Do not use damaged charger or USB cable to charge the device.
- Do not use any other chargers than those recommended
- Do not use the device where wireless devices are not allowed.
- Adapter shall be installed near the equipment and shall be easily accessible.
- Use only power supplies which are provided by manufacturer and in the original packing of this product. If you have any questions, please don't hesitate to contact us.

Please read and follow the above safety information when operating the device. We cannot guarantee that no accidents or damage will occur due to improper use of the device. Please use this product with care and operate at your own risk.

Warnings

- Operating Temperature: -20 °C-43 °C (-4°F-109°F)
- Operating Humidity: 10%-95%RH, Non-condensing

Explanation of the symbols on the product label

Symbol	Explanation
	DC voltage
	RECYCLING This product bears the selective sorting symbol for Waste electrical and electronic equipment (WEEE). This means that this product must be handled pursuant to European directive 2012/19/EU in order to be recycled or dismantled to minimize its impact on the environment. User has the choice to give his product to a competent recycling organization or to the retailer when he buys a new electrical or electronic equipment.