



Philips Momentum
4K HDR display with
Ambiglow

Designed for Xbox

Momentum
55" (139.7 cm)
3840 x 2160 (4K UHD)



559M1RYV

Optimized performance for next-gen console gaming

For true console gaming enthusiasts, the Designed for Xbox Momentum display delivers a new era of gaming. Level-up with sound by audio experts Bowers & Wilkins and new Ambiglow lighting for deeper immersion and overall gaming awesomeness.

Designed for Xbox

- Designed for Xbox for the optimal gaming experience
- Smooth console gaming at 4K / 120Hz
- 4K / 144Hz PC gaming on the big screen
- Purpose-built for low latency gaming
- DisplayHDR 1000 for truly vivid details and realism

Design for immersive entertainment

- Integrated Bowers & Wilkins speakers for immersive sound
- Ambiglow adds a new dimension to your viewing experience

Features for gamers needs

- LowBlue mode and Flicker-free easy-on-the eyes viewing
- USB-C one cable does it all
- MultiView enables simultaneous dual connect and view



PHILIPS

4K HDR display with Ambiglow
Designed for Xbox Momentum, 55" (139.7 cm), 3840 x 2160 (4K UHD)

559M1RYV/27

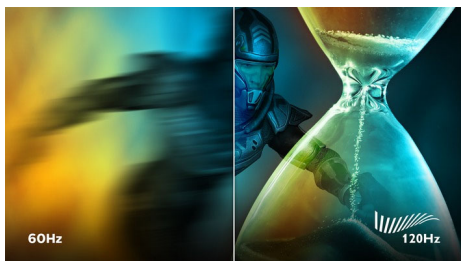
Highlights

Designed for Xbox



Unleash your console gaming. We partnered with the Xbox team to develop this Designed for Xbox display that is validated to deliver the optimal Xbox Series X visual performance the moment you plug it in.

4K / 120Hz Console gaming



Game with ultra-clear 4K resolution at a smooth 120Hz refresh rate when you connect your Xbox Series X & other next-gen consoles via one of multiple HDMI 2.1 connections. A faster refresh rate ensures less skipped frames, showing enemy movement in ultra-clear, smooth motion to easily target them.

4K / 144Hz PC gaming



PC gamers who demand a true 4K gaming experience with the fastest refresh rate of

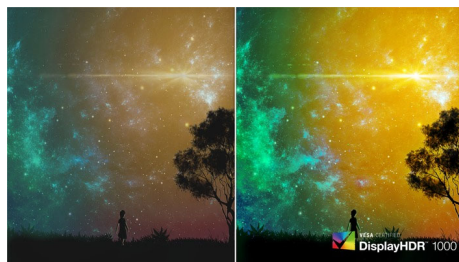
144Hz can now enjoy even smoother performance with the included connections.

Low Latency Gaming



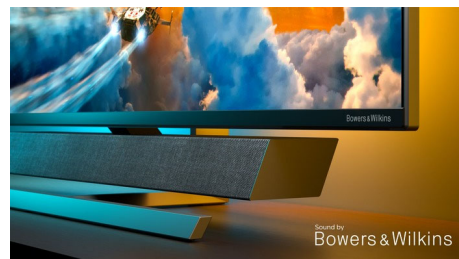
Unlike standard TVs, Philips Momentum gaming displays are purpose-built with low lag and lighting fast pixel response as a priority and supports fast-paced, reaction time-sensitive games. The display also provides variable refresh rate (VRR) support for Xbox Series X to achieve seamlessly smooth motion.

VESA DisplayHDR 1000



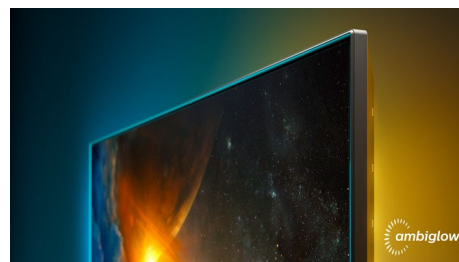
VESA-certified DisplayHDR 1000 delivers a dramatically different visual experience vs. other 'HDR compatible' screens. Extreme deep blacks and bright whites contrast with brilliant colors, to bring out details that you've never experienced before. Gamers can spot enemies hiding the dark corners and shadows easily, and movie viewers can enjoy a more compelling and lifelike show. This Philips Momentum comes with several HDR modes, each optimized for your usage scenarios: HDR Game, HDR Movie, and HDR Photo.

Bowers & Wilkins speakers



A new standard for gaming audio: covered by an acoustically transparent wool-blend Kvadrat material, the integrated speaker system by legendary speaker experts Bowers & Wilkins delivers an epic sound experience. With an integrated woofer, high-quality midrange drivers and tweeters, you can feel the action around you. This Philips Momentum display also offers True Sound audio modes specially tuned by Bowers & Wilkins: simply select an audio mode to optimize your gaming, viewing or listening experience.

Ambiglow



The innovative Ambiglow technology enhances the content on the screen by creating a halo of light from the monitor. Its fast processor analyses the incoming image content, continuously adapts the color and brightness of the emitted light to match the image. Especially suited for watching movies, sports or playing games, Philips Ambiglow offers you a unique and immersive viewing experience.



Sound by
Bowers & Wilkins



Specifications

Picture/Display

- LCD panel type: VA LCD
- Backlight type: W-LED system
- Panel Size: 55 inch / 139.7 cm
- Color gamut (min.): DCI-P3 Coverage: 95%*
- Color gamut (typical): NTSC 104%*, sRGB 125%*
- HDR: DisplayHDR 1000 certified
- Effective viewing area: 1209.6 (H) x 680.4 (V) mm
- Aspect ratio: 16:9
- Maximum resolution: HDMI / DP: 3840 x 2160 @ 144 Hz*; USB-C: 3840 x 2160 @ 120 Hz
- Pixel Density: 80 PPI
- Response time (typical): 4 ms (Gray to Gray)
- Low Input Lag
- Brightness: Normal Mode: 750 cd/m²; HDR Mode: 1200 cd/m²
- SmartContrast: Mega Infinity DCR
- Contrast ratio (typical): 4000:1
- Pixel pitch: 0.315 x 0.315 mm
- Viewing angle: 178° (H) / 178° (V), @ C/R > 10
- Picture enhancement: SmartImage game
- Display colors: Color support 1.07 billion colors
- Scanning Frequency: HDMI: 30 - 135 kHz (H) / 48 - 144 Hz (V); DP: 30 - 254 kHz (H) / 48 - 144 Hz (V); USB C: 30 - 254 kHz (H) / 48 - 120 Hz (V)
- SmartUniformity: 93 ~ 105%
- Delta E: < 2 (sRGB)
- sRGB
- Flicker-free
- LowBlue Mode
- Ambiglow: 3-sided
- Adaptive sync
- HDMI 2.1 Feature: VRR

Connectivity

- Signal Input: HDMI 2.1 x 3, DP 1.4 x 1, USB-C x 1 (DP Alt mode, PD 65W)
- USB: USB-B x 1 (upstream), USB 3.2 x 4 (downstream with 2 fast charge B.C 1.2)
- Sync Input: Separate Sync
- Audio (In/Out): Audio out
- EasyLink (HDMI-CEC): Remote control pass-through, System audio control, System standby

Convenience

- MultiView: PBP (2x devices)
- User convenience: Power On/Off, Menu/OK, Input/Up, Sound Mode/Down, SmartImage game/Back
- OSD Languages: Brazil Portuguese, Czech, Dutch, English, Finnish, French, German, Greek, Hungarian, Italian, Japanese, Korean, Polish, Portuguese, Russian, Spanish, Simplified Chinese, Swedish, Turkish, Traditional Chinese, Ukrainian
- Other convenience: Kensington lock, VESA mount (200x200mm)
- Plug & Play Compatibility: DDC/CI, Mac OS X, sRGB, Windows 10 / 8.1 / 8 / 7

Sound

- Output Power: 40 W (RMS), 2.1 Channel, Sound by Bowers & Wilkins
- Sound Enhancement: DTS Sound
- Speaker Configuration: 2 x tweeters, 10 W x 2 mid-high speakers, 20 W x 1 woofer

Stand

- Tilt: -5/10 degree

Power

- On mode: 95.3 W (typ.)
- Standby mode: 0.5 W (typ.)
- Off mode: 0.3 W (typ.)
- Power LED indicator: Operation - N.A., Off - Red, Standby - Red (breathing)
- Power supply: Internal, 100-240VAC, 50-60Hz

Dimensions

- Product with stand(max height): 1232 x 834 x 308 mm
- Product with stand(max height): 48.5 x 32.8 x 12.1 inch
- Product without stand (mm): 1232 x 715 x 102 mm
- Product without stand in inch: 48.5 x 28.1 x 4.0 inch
- Packaging in mm (WxHxD): 1390 x 990 x 376 mm
- Packaging in inch (WxHxD): 54.7 x 38.9 x 14.8 inch

Weight

- Product with stand (kg): 29.50 kg
- Product with stand (lb): 64.90 lb
- Product without stand (kg): 25.70 kg
- Product without stand (lb): 56.54 lb
- Product with packaging (kg): 38.18 kg
- Product with packaging (lb): 83.99 lb

Operating conditions

- Temperature range (operation): 0°C to 40°C °C
- Temperature range (storage): -20°C to 60°C °C
- Relative humidity: 20%-80 %
- Altitude: Operation: +12,000ft (3,658m), Non-operation: +40,000ft (12,192m)
- MTBF: 50,000 (Excluded backlight) hour(s)

Sustainability

- Environmental and energy: RoHS, Mercury Free
- Recyclable packaging material: 100 %

Compliance and standards

- Regulatory Approvals: CB, CE Mark, TUV/ISO9241-307, TUV-BAUART, CU-EAC, EAEU RoHS, CCC, CECP, CEL

Cabinet

- Color: Black
- Finish: Textured / Glossy

What's in the box?

- Monitor with stand

- Cables: DP cable, HDMI cable, USB upstream cable, USB-C to C cable, Power cable
- User Documentation
- Accessory: Remote control



Issue date 2022-04-21

Version: 5.1.2

12 NC: 8670 001 78886
UPC: 6 09585 25451 0

© 2022 Koninklijke Philips N.V.
All Rights reserved.

Specifications are subject to change without notice.
Trademarks are the property of Koninklijke Philips N.V.
or their respective owners.

www.philips.com

* BT, 709 / DCI-P3 Coverage based on CIE1976

* NTSC Area based on CIE1976

* sRGB Area based on CIE1931

* The maximum resolution works for either HDMI input or DP input.

* For best output performance, please always ensure that your graphic card is capable of achieving the maximum resolution and refresh rate of this Philips display.

* Response time value equal to SmartResponse

* For USB-C power and charging function, your Notebook/device must support USB-C standard Power Delivery specifications. Please check with your Notebook user manual or manufacturer for more details.

* For Video transmission via USB-C, your Notebook/device must support USB-C DP Alt mode

* The monitor may look different from feature images.