

Job Name

Purchaser

Submitted to

Unit Designation

Location

Engineer

Reference

Schedule #

Approval

Construction

Specifications

Model	US Code		CNH09LDB
	Model Number		AC009BNLDCH/AA
Performance	Nominal Capacity	Cooling (Btu/h)	9,000
		Heating (Btu/h)	12,000
Power	Voltage (øV/Hz)		1 / 208-230 / 60
	Nominal Running Current (A)		1.06
Fan	Type		Centrifugal (2)
	Motor	Type	BLDC (1)
		FLA / Output	1.06A / 84 W
Airflow	CFM	L/M/H	194 / 230 / 283
External Static Pressure	Standard	"WC	0.1
	Min / Max.	"WC	0 / 0.24
Refrigerant	Type		R410A
	Control Method		Electronic Expansion Valve (at outdoor unit)
Piping Connections	Liquid (flare)	Inches	1/4
	Suction (flare)	Inches	3/8
	Drain	Inches	OD 1 1/4, ID 1
Unit Dimensions	W X H X D	Inches	35 7/16 X 7 13/16 X 17 5/16
	Weight	lbs.	41.7
	Duct Connections W X H (refer to drawing)	Supply (inches)	29 3/8 X 5 15/16
		Return (inches)	30 5/8 X 6 5/8 (inside)
Sound Level	L / M / H	dB(A)	26 / 30 / 33
Accessories	Wired Controllers	Advanced	MWR-WG00UN
		Simple Touch	MWR-SH11UN
	Wireless Signal Receiver		MRK-A10N
	Wireless Remote Controller ¹		AR-EH04U
	24VAC Thermostat Adapter		MIM-A60UN
	Filter Box		FB-SLIM2
	Wi-Fi Adapter For Remote Control ²		MIM-H04UN
	External Temperature Sensor		MRW-TA
	External Contact Control Interface Module		MIM-B14
	CN83 Pigtail		DB39-01263A
Line sets - insulated and flared, interconnect cables included	25' - ILS2506		
	50' - ILS5006		
Safety Certifications			ETL (UL 1995)



- High-voltage terminal block temperature sensor to disable unit in the event overheating of power connection.
- Built in condensate pump with maximum 29" lift from the bottom of the unit, check valve, and float switch that disables indoor unit during overflow detection.
- System energy consumption can be viewed using the Samsung SmartThings mobile app (not revenue grade, for reference only)
- The indoor unit shall be powered by the outdoor unit

Construction
The unit shall be constructed of insulated, galvanized steel

Heat Exchanger
The heat exchanger shall be mechanically bonded fin to copper tube

Indoor Fan
Indoor fan is a twin, backward curved centrifugal type with a single fan motor

Three fan speed settings and auto setting

Controls
Control signal shall be a DDC type signal

Interconnect control wire between outdoor and indoor shall be 16 AWG X 2

Dual set temperature support when connected to MWR-WG00UN Advanced Wired Controller.

The system shall integrate with the Samsung Controls Solution.

Air Filtration
The unit includes a simple filter as standard. Field provided filtration is recommended.

Pressure drop across the filter must be factored into the total ESP.

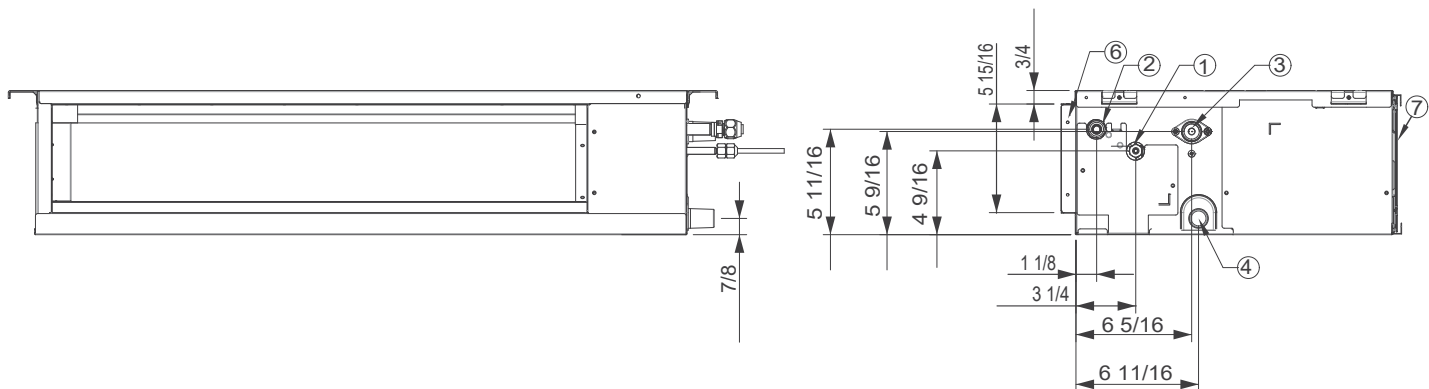
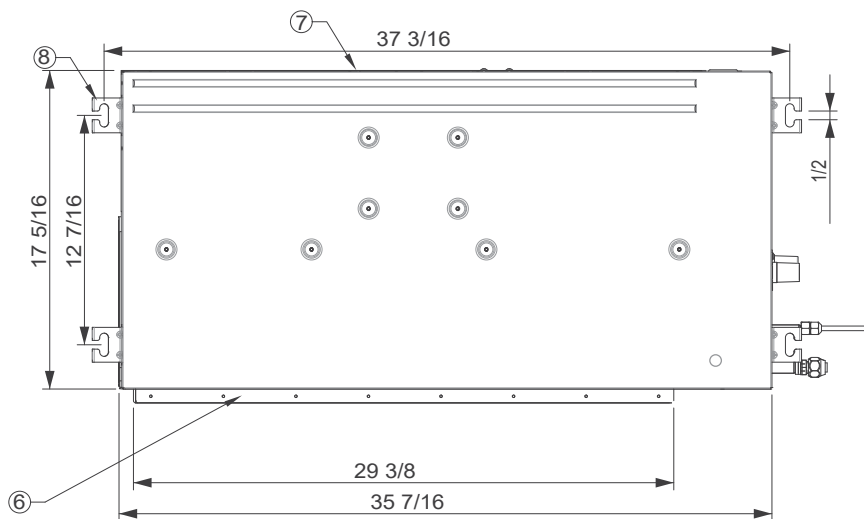
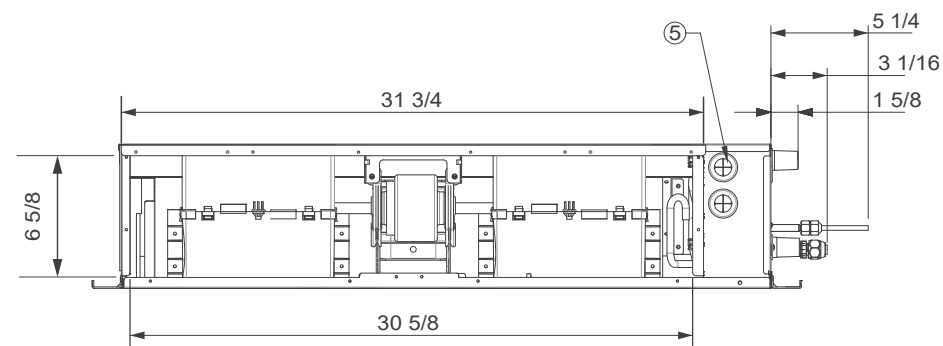
Compatibility
Will only operate with Samsung outdoor unit model numbers: AC009BXADCH/AA (CXH09ADB), AJ020BXJ2CH/AA (JXH20J2B), AJ024BXJ3CH/AA (JXH24J3B), AJ036BXJ4CH/AA (JXH36J4B), AJ048BXJ5CH/AA (JXH48J5B), AJ020BXS3CH/AA (JXH20S3B), AJ024BXS4CH/AA (JXH24S4B), AJ030BXS4CH/AA (JXH30S4B), AJ036BXJ4CH/AA (JXH36J4B), AJ036BXS4CH/AA (JXH36S4B), AJ048BXJ5CH/AA (JXH48J5B)

ATTENTION
This air handling unit is intended for free-air discharge or for connection to a duct supplying only one room. Improper installation could contribute to the spread of smoke or flame in the event of a fire.

Nominal cooling capacities are based on: Indoor temperature: 80 °F DB, 67°F WB. Outdoor temperature: 95°F DB, 75°F WB.
Nominal heating capacities are based on: Indoor temperature: 70 °F DB, 60°F WB. Outdoor temperature: 47°F DB, 43°F WB.
Samsung HVAC maintains a policy of ongoing development, specifications are subject to change without notice.

¹ Requires the installation of the MRK-A10N wireless signal receiver.

² MIM-H04UN is only required for remote control of cassette, console, and duct indoor units. Only one per system is required.



No.	Description
1	Suction pipe connection
2	Liquid pipe connection
3	Drain connection (when using integral drain pump)
4	Gravity drain connection
5	Opening for power and communication wire conduit
6	Supply air outlet flange
7	Return air (air inlet)
8	Suspension bolt anchor point