

TEST REPORT

Applicant: DigiLife Technologies Co., Ltd
Address: 13F., No. 7, Dexing W. Rd., Shilin Dist., Taipei City 11158, Taiwan
The following sample(s) was/were submitted and identified on behalf of the client as:
Product name: Car Camcorder
Test model: V10P
Serial model: V10,V105P,GM2,V10S,V105S,GM2L,P10
Manufacturer: DigiLife Technologies Co., Ltd
Address: 13F., No. 7, Dexing W. Rd., Shilin Dist., Taipei City 11158, Taiwan
Factory: Shenzhen XinghuafengTechnogyCo.,LTD.
Address: 201-301, building 2, Xintang Industrial Park, Baishixia Area, FuyongTown,Bao'an, Shenzhen,China,
Sample Received Date: Sep.1, 2021
Testing Period: Sep.1, 2021~ Oct.12, 2021

Test Requirement:

As specified by client, to determine the Lead(Pb), Cadmium(Cd), Mercury(Hg), Hexavalent Chromium(Cr(VI)), Polybrominated Biphenyls(PBBs), Polybrominated, Diphenyl Ethers(PBDEs), Bis-(2-ethylhexyl) Phthalate (DEHP), Benzyl butyl Phthalate (BBP), Dibutyl Phthalate (DBP) and Diisobutyl Phthalate(DIBP)contents in the submitted sample in accordance with RoHS directive 2011/65/EU and the amendment directive (EU) 2015/863.

Test Result(s): Please refer to the following page(s);

Test Method: Please refer to the following page(s);

Compiled by:

Bi Yun

Reviewed by:

Elmor

Approved by:

Mark Liao

Date:

2021-10-20

Test Result(s):

1. Charging dock

Part No.	Part Description	Test Items	XRF Screening Result(mg/kg)	Chemical Test Result(mg/kg)	Conclusion
1	Black plastic shell	Pb	BL	/	Pass
		Cd	BL	/	
		Hg	BL	/	
		Cr(Cr(VI))	BL	/	
		Br(PBBs&PBDEs)	BL	/	
		DIBP	/	N.D.	
		DEHP	/	N.D.	
		BBP	/	N.D.	
2	Black plastic inner shell	Pb	BL	/	Pass
		Cd	BL	/	
		Hg	BL	/	
		Cr(Cr(VI))	BL	/	
		Br(PBBs&PBDEs)	BL	/	
		DIBP	/	N.D.	
		DEHP	/	N.D.	
		BBP	/	N.D.	
3	Black metal screw	Pb	BL	/	Pass
		Cd	BL	/	
		Hg	BL	/	
		Cr(Cr(VI))	BL	/	
		Br(PBBs&PBDEs)	/	/	
		DIBP	/	/	
		DEHP	/	/	
		BBP	/	/	
DBP	/	/			

2. Charging dock - PCB

4	Green PCB	Pb	BL	/	Pass
		Cd	BL	/	
		Hg	BL	/	
		Cr(Cr(VI))	BL	/	
		Br(PBBs&PBDEs)	BL	/	
		DIBP	/	N.D.	
		DEHP	/	N.D.	
		BBP	/	N.D.	
		DBP	/	N.D.	
5	Silvery metal shell of Type C interface is large	Pb	BL	/	Pass
		Cd	BL	/	
		Hg	BL	/	
		Cr(Cr(VI))	IN	N.D.	
		Br(PBBs&PBDEs)	/	/	
		DIBP	/	/	
		DEHP	/	/	
		BBP	/	/	
		DBP	/	/	
6	Black plastic of Type C interface is large	Pb	BL	/	Pass
		Cd	BL	/	
		Hg	BL	/	
		Cr(Cr(VI))	BL	/	
		Br(PBBs&PBDEs)	BL	/	
		DIBP	/	N.D.	
		DEHP	/	N.D.	
		BBP	/	N.D.	
		DBP	/	N.D.	
7	Metal plug pin of Type C interface is large	Pb	BL	/	Pass
		Cd	BL	/	
		Hg	BL	/	
		Cr(Cr(VI))	BL	/	
		Br(PBBs&PBDEs)	/	/	
		DIBP	/	/	
		DEHP	/	/	
		BBP	/	/	
		DBP	/	/	

8	Silvery metal shell of Type C interface is small	Pb	BL	/	Pass
		Cd	BL	/	
		Hg	BL	/	
		Cr(Cr(VI))	BL	/	
		Br(PBBs&PBDEs)	/	/	
		DIBP	/	/	
		DEHP	/	/	
		BBP	/	/	
9	Black plastic of Type C interface is small	Pb	BL	/	Pass
		Cd	BL	/	
		Hg	BL	/	
		Cr(Cr(VI))	BL	/	
		Br(PBBs&PBDEs)	BL	/	
		DIBP	/	N.D.	
		DEHP	/	N.D.	
		BBP	/	N.D.	
10	Metal plug pin of Type C interface is small	Pb	BL	/	Pass
		Cd	BL	/	
		Hg	BL	/	
		Cr(Cr(VI))	BL	/	
		Br(PBBs&PBDEs)	/	/	
		DIBP	/	/	
		DEHP	/	/	
		BBP	/	/	
11	Chip 1 of SMD	Pb	BL	/	Pass
		Cd	BL	/	
		Hg	BL	/	
		Cr(Cr(VI))	BL	/	
		Br(PBBs&PBDEs)	BL	/	
		DIBP	/	N.D.	
		DEHP	/	N.D.	
		BBP	/	N.D.	
DBP	/	N.D.			

12	Chip 2 of SMD	Pb	BL	/	Pass
		Cd	BL	/	
		Hg	BL	/	
		Cr(Cr(VI))	BL	/	
		Br(PBBs&PBDEs)	BL	/	
		DIBP	/	N.D.	
		DEHP	/	N.D.	
		BBP	/	N.D.	
		DBP	/	N.D.	
13	SMD tantalum capacitors	Pb	BL	/	Pass
		Cd	BL	/	
		Hg	BL	/	
		Cr(Cr(VI))	BL	/	
		Br(PBBs&PBDEs)	BL	/	
		DIBP	/	N.D.	
		DEHP	/	N.D.	
		BBP	/	N.D.	
		DBP	/	N.D.	
14	SMD capacitor	Pb	BL	/	Pass
		Cd	BL	/	
		Hg	BL	/	
		Cr(Cr(VI))	BL	/	
		Br(PBBs&PBDEs)	BL	/	
		DIBP	/	N.D.	
		DEHP	/	N.D.	
		BBP	/	N.D.	
		DBP	/	N.D.	
15	SMD crystals	Pb	BL	/	Pass
		Cd	BL	/	
		Hg	BL	/	
		Cr(Cr(VI))	BL	/	
		Br(PBBs&PBDEs)	BL	/	
		DIBP	/	N.D.	
		DEHP	/	N.D.	
		BBP	/	N.D.	
		DBP	/	N.D.	

16	SMD inductor	Pb	BL	/	Pass
		Cd	BL	/	
		Hg	BL	/	
		Cr(Cr(VI))	IN	N.D.	
		Br(PBBs&PBDEs)	/	/	
		DIBP	/	/	
		DEHP	/	/	
		BBP	/	/	
17	Chip 3 of SMD	Pb	BL	/	Pass
		Cd	BL	/	
		Hg	BL	/	
		Cr(Cr(VI))	BL	/	
		Br(PBBs&PBDEs)	BL	/	
		DIBP	/	N.D.	
		DEHP	/	N.D.	
		BBP	/	N.D.	
18	SMD resistor	Pb	BL	/	Pass
		Cd	BL	/	
		Hg	BL	/	
		Cr(Cr(VI))	IN	N.D.	
		Br(PBBs&PBDEs)	BL	/	
		DIBP	/	N.D.	
		DEHP	/	N.D.	
		BBP	/	N.D.	
		DBP	/	N.D.	

3. Stents

19	Black plastic shell	Pb	BL	/	Pass
		Cd	BL	/	
		Hg	BL	/	
		Cr(Cr(VI))	BL	/	
		Br(PBBs&PBDEs)	BL	/	
		DIBP	/	N.D.	
		DEHP	/	N.D.	
		BBP	/	N.D.	
		DBP	/	N.D.	

20	Black plastic clasp	Pb	BL	/	Pass
		Cd	BL	/	
		Hg	BL	/	
		Cr(Cr(VI))	BL	/	
		Br(PBBs&PBDEs)	BL	/	
		DIBP	/	N.D.	
		DEHP	/	N.D.	
		BBP	/	N.D.	
21	Silvery magnet	Pb	BL	/	Pass
		Cd	BL	/	
		Hg	BL	/	
		Cr(Cr(VI))	BL	/	
		Br(PBBs&PBDEs)	/	/	
		DIBP	/	/	
		DEHP	/	/	
		BBP	/	/	
22	Black metal screws	Pb	BL	/	Pass
		Cd	BL	/	
		Hg	BL	/	
		Cr(Cr(VI))	BL	/	
		Br(PBBs&PBDEs)	/	/	
		DIBP	/	/	
		DEHP	/	/	
		BBP	/	/	

4. Recorder – shell

23	Transparent glass lens of black external shell	Pb	BL	/	Pass
		Cd	BL	/	
		Hg	BL	/	
		Cr(Cr(VI))	BL	/	
		Br(PBBs&PBDEs)	BL	/	
		DIBP	/	N.D.	
		DEHP	/	N.D.	
		BBP	/	N.D.	
DBP	/	N.D.			

24	Black plastic shell of black external shell	Pb	BL	/	Pass
		Cd	BL	/	
		Hg	BL	/	
		Cr(Cr(VI))	BL	/	
		Br(PBBs&PBDEs)	BL	/	
		DIBP	/	N.D.	
		DEHP	/	N.D.	
		BBP	/	N.D.	
25	Black coating of black external shell	Pb	BL	/	Pass
		Cd	BL	/	
		Hg	BL	/	
		Cr(Cr(VI))	BL	/	
		Br(PBBs&PBDEs)	BL	/	
		DIBP	/	N.D.	
		DEHP	/	N.D.	
		BBP	/	N.D.	
26	Grey plastic base material of black external shell	Pb	BL	/	Pass
		Cd	BL	/	
		Hg	BL	/	
		Cr(Cr(VI))	BL	/	
		Br(PBBs&PBDEs)	BL	/	
		DIBP	/	N.D.	
		DEHP	/	N.D.	
		BBP	/	N.D.	
27	Black rubber ring of black external shell	Pb	BL	/	Pass
		Cd	BL	/	
		Hg	BL	/	
		Cr(Cr(VI))	BL	/	
		Br(PBBs&PBDEs)	BL	/	
		DIBP	/	N.D.	
		DEHP	/	N.D.	
		BBP	/	N.D.	
DBP	/	N.D.			

28	Black metal screw 1 of black external shell	Pb	BL	/	Pass
		Cd	BL	/	
		Hg	BL	/	
		Cr(Cr(VI))	BL	/	
		Br(PBBs&PBDEs)	/	/	
		DIBP	/	/	
		DEHP	/	/	
		BBP	/	/	
29	Black metal screw 2 of black external shell	Pb	BL	/	Pass
		Cd	BL	/	
		Hg	BL	/	
		Cr(Cr(VI))	BL	/	
		Br(PBBs&PBDEs)	/	/	
		DIBP	/	/	
		DEHP	/	/	
		BBP	/	/	
		DBP	/	/	

5. Recorder – PCB1

30	Green PCB	Pb	BL	/	Pass
		Cd	BL	/	
		Hg	BL	/	
		Cr(Cr(VI))	BL	/	
		Br(PBBs&PBDEs)	BL	/	
		DIBP	/	N.D.	
		DEHP	/	N.D.	
		BBP	/	N.D.	
		DBP	/	N.D.	
31	White label of green PCB	Pb	BL	/	Pass
		Cd	BL	/	
		Hg	BL	/	
		Cr(Cr(VI))	BL	/	
		Br(PBBs&PBDEs)	BL	/	
		DIBP	/	N.D.	
		DEHP	/	N.D.	
		BBP	/	N.D.	
		DBP	/	N.D.	

32	Silvery metal shell of green PCB	Pb	IN	N.D.	Pass
		Cd	IN	N.D.	
		Hg	BL	/	
		Cr(Cr(VI))	IN	N.D.	
		Br(PBBs&PBDEs)	/	/	
		DIBP	/	/	
		DEHP	/	/	
		BBP	/	/	
33	Blue tape of green PCB	Pb	BL	/	Pass
		Cd	BL	/	
		Hg	BL	/	
		Cr(Cr(VI))	BL	/	
		Br(PBBs&PBDEs)	BL	/	
		DIBP	/	N.D.	
		DEHP	/	N.D.	
		BBP	/	N.D.	
34	Grey rubber ring of green PCB	Pb	BL	/	Pass
		Cd	BL	/	
		Hg	BL	/	
		Cr(Cr(VI))	BL	/	
		Br(PBBs&PBDEs)	BL	/	
		DIBP	/	N.D.	
		DEHP	/	N.D.	
		BBP	/	N.D.	
35	Black tape of green PCB	Pb	BL	/	Pass
		Cd	BL	/	
		Hg	BL	/	
		Cr(Cr(VI))	BL	/	
		Br(PBBs&PBDEs)	BL	/	
		DIBP	/	N.D.	
		DEHP	/	N.D.	
		BBP	/	N.D.	
DBP	/	N.D.			

36	Black plastic of black Type C interface	Pb	BL	/	Pass
		Cd	BL	/	
		Hg	BL	/	
		Cr(Cr(VI))	BL	/	
		Br(PBBs&PBDEs)	BL	/	
		DIBP	/	N.D.	
		DEHP	/	N.D.	
		BBP	/	N.D.	
37	Metal plug pin of black Type C interface	Pb	BL	/	Pass
		Cd	BL	/	
		Hg	BL	/	
		Cr(Cr(VI))	BL	/	
		Br(PBBs&PBDEs)	/	/	
		DIBP	/	/	
		DEHP	/	/	
		BBP	/	/	
38	Black plastic of white/black interface	Pb	BL	/	Pass
		Cd	BL	/	
		Hg	BL	/	
		Cr(Cr(VI))	BL	/	
		Br(PBBs&PBDEs)	BL	/	
		DIBP	/	N.D.	
		DEHP	/	N.D.	
		BBP	/	N.D.	
39	White plastic of white/black interface	Pb	BL	/	Pass
		Cd	BL	/	
		Hg	BL	/	
		Cr(Cr(VI))	BL	/	
		Br(PBBs&PBDEs)	BL	/	
		DIBP	/	N.D.	
		DEHP	/	N.D.	
		BBP	/	N.D.	
DBP	/	N.D.			

40	Metal plug pin of white/black interface	Pb	BL	/	Pass
		Cd	BL	/	
		Hg	BL	/	
		Cr(Cr(VI))	BL	/	
		Br(PBBs&PBDEs)	/	/	
		DIBP	/	/	
		DEHP	/	/	
		BBP	/	/	
41	Black plastic of beige/black interface	Pb	BL	/	Pass
		Cd	BL	/	
		Hg	BL	/	
		Cr(Cr(VI))	BL	/	
		Br(PBBs&PBDEs)	BL	/	
		DIBP	/	N.D.	
		DEHP	/	N.D.	
		BBP	/	N.D.	
42	Beige plastic of beige/black interface	Pb	BL	/	Pass
		Cd	BL	/	
		Hg	BL	/	
		Cr(Cr(VI))	BL	/	
		Br(PBBs&PBDEs)	BL	/	
		DIBP	/	N.D.	
		DEHP	/	N.D.	
		BBP	/	N.D.	
43	Metal plug pin of beige/black interface	Pb	BL	/	Pass
		Cd	BL	/	
		Hg	BL	/	
		Cr(Cr(VI))	BL	/	
		Br(PBBs&PBDEs)	/	/	
		DIBP	/	/	
		DEHP	/	/	
		BBP	/	/	
DBP	/	/			

44	White plastic of white interface	Pb	BL	/	Pass
		Cd	BL	/	
		Hg	BL	/	
		Cr(Cr(VI))	BL	/	
		Br(PBBs&PBDEs)	BL	/	
		DIBP	/	N.D.	
		DEHP	/	N.D.	
		BBP	/	N.D.	
		DBP	/	N.D.	
45	Metal plug pin of white interface	Pb	BL	/	Pass
		Cd	BL	/	
		Hg	BL	/	
		Cr(Cr(VI))	BL	/	
		Br(PBBs&PBDEs)	/	/	
		DIBP	/	/	
		DEHP	/	/	
		BBP	/	/	
		DBP	/	/	
46	Chip 1 of SMD	Pb	BL	/	Pass
		Cd	BL	/	
		Hg	BL	/	
		Cr(Cr(VI))	BL	/	
		Br(PBBs&PBDEs)	BL	/	
		DIBP	/	N.D.	
		DEHP	/	N.D.	
		BBP	/	N.D.	
		DBP	/	N.D.	
47	Chip 2 of SMD	Pb	BL	/	Pass
		Cd	BL	/	
		Hg	BL	/	
		Cr(Cr(VI))	BL	/	
		Br(PBBs&PBDEs)	BL	/	
		DIBP	/	N.D.	
		DEHP	/	N.D.	
		BBP	/	N.D.	
		DBP	/	N.D.	

48	Chip 3 of SMD	Pb	BL	/	Pass
		Cd	BL	/	
		Hg	BL	/	
		Cr(Cr(VI))	BL	/	
		Br(PBBs&PBDEs)	BL	/	
		DIBP	/	N.D.	
		DEHP	/	N.D.	
		BBP	/	N.D.	
		DBP	/	N.D.	
49	SMD diode	Pb	1548 ^{#1}	/	Pass
		Cd	BL	/	
		Hg	BL	/	
		Cr(Cr(VI))	BL	/	
		Br(PBBs&PBDEs)	BL	/	
		DIBP	/	N.D.	
		DEHP	/	N.D.	
		BBP	/	N.D.	
		DBP	/	N.D.	
50	SMD inductance	Pb	BL	/	Pass
		Cd	BL	/	
		Hg	BL	/	
		Cr(Cr(VI))	IN	N.D.	
		Br(PBBs&PBDEs)	/	/	
		DIBP	/	/	
		DEHP	/	/	
		BBP	/	/	
		DBP	/	/	
51	SMD crystals	Pb	BL	/	Pass
		Cd	BL	/	
		Hg	BL	/	
		Cr(Cr(VI))	BL	/	
		Br(PBBs&PBDEs)	BL	/	
		DIBP	/	N.D.	
		DEHP	/	N.D.	
		BBP	/	N.D.	
		DBP	/	N.D.	

52	SMD resistor	Pb	BL	/	Pass
		Cd	BL	/	
		Hg	BL	/	
		Cr(Cr(VI))	BL	/	
		Br(PBBs&PBDEs)	BL	/	
		DIBP	/	N.D.	
		DEHP	/	N.D.	
		BBP	/	N.D.	
		DBP	/	N.D.	
53	SMD capacitor	Pb	BL	/	Pass
		Cd	BL	/	
		Hg	BL	/	
		Cr(Cr(VI))	BL	/	
		Br(PBBs&PBDEs)	BL	/	
		DIBP	/	N.D.	
		DEHP	/	N.D.	
		BBP	/	N.D.	
		DBP	/	N.D.	
54	SMD LED	Pb	BL	/	Pass
		Cd	BL	/	
		Hg	BL	/	
		Cr(Cr(VI))	BL	/	
		Br(PBBs&PBDEs)	BL	/	
		DIBP	/	N.D.	
		DEHP	/	N.D.	
		BBP	/	N.D.	
		DBP	/	N.D.	
55	Silvery metal shell of SD card interface	Pb	BL	/	Pass
		Cd	BL	/	
		Hg	BL	/	
		Cr(Cr(VI))	IN	N.D.	
		Br(PBBs&PBDEs)	/	/	
		DIBP	/	/	
		DEHP	/	/	
		BBP	/	/	
		DBP	/	/	

56	Black plastic of SD card interface	Pb	BL	/	Pass
		Cd	BL	/	
		Hg	BL	/	
		Cr(Cr(VI))	BL	/	
		Br(PBBs&PBDEs)	BL	/	
		DIBP	/	N.D.	
		DEHP	/	N.D.	
		BBP	/	N.D.	
		DBP	/	N.D.	
57	Metal plug pin of SD card interface	Pb	BL	/	Pass
		Cd	BL	/	
		Hg	BL	/	
		Cr(Cr(VI))	BL	/	
		Br(PBBs&PBDEs)	/	/	
		DIBP	/	/	
		DEHP	/	/	
		BBP	/	/	
		DBP	/	/	
58	Black plastic button of light touch switch	Pb	BL	/	Pass
		Cd	BL	/	
		Hg	BL	/	
		Cr(Cr(VI))	BL	/	
		Br(PBBs&PBDEs)	BL	/	
		DIBP	/	N.D.	
		DEHP	/	N.D.	
		BBP	/	N.D.	
		DBP	/	N.D.	
59	White plastic of light touch switch	Pb	BL	/	Pass
		Cd	BL	/	
		Hg	BL	/	
		Cr(Cr(VI))	BL	/	
		Br(PBBs&PBDEs)	BL	/	
		DIBP	/	N.D.	
		DEHP	/	N.D.	
		BBP	/	N.D.	
		DBP	/	N.D.	

60	Silvery metal shell of light touch switch	Pb	BL	/	Pass
		Cd	BL	/	
		Hg	BL	/	
		Cr(Cr(VI))	BL	/	
		Br(PBBs&PBDEs)	/	/	
		DIBP	/	/	
		DEHP	/	/	
		BBP	/	/	
61	Metal contact pin of light touch switch	Pb	BL	/	Pass
		Cd	BL	/	
		Hg	BL	/	
		Cr(Cr(VI))	BL	/	
		Br(PBBs&PBDEs)	/	/	
		DIBP	/	/	
		DEHP	/	/	
		BBP	/	/	
62	Chip 1 of SMD	Pb	BL	/	Pass
		Cd	BL	/	
		Hg	BL	/	
		Cr(Cr(VI))	BL	/	
		Br(PBBs&PBDEs)	BL	/	
		DIBP	/	N.D.	
		DEHP	/	N.D.	
		BBP	/	N.D.	
63	Chip 2 of SMD	Pb	BL	/	Pass
		Cd	BL	/	
		Hg	BL	/	
		Cr(Cr(VI))	BL	/	
		Br(PBBs&PBDEs)	BL	/	
		DIBP	/	N.D.	
		DEHP	/	N.D.	
		BBP	/	N.D.	
DBP	/	N.D.			

64	Blue electronic component of SMD	Pb	BL	/	Pass
		Cd	BL	/	
		Hg	BL	/	
		Cr(Cr(VI))	BL	/	
		Br(PBBs&PBDEs)	BL	/	
		DIBP	/	N.D.	
		DEHP	/	N.D.	
		BBP	/	N.D.	
65	SMD crystals	Pb	BL	/	Pass
		Cd	BL	/	
		Hg	BL	/	
		Cr(Cr(VI))	BL	/	
		Br(PBBs&PBDEs)	BL	/	
		DIBP	/	N.D.	
		DEHP	/	N.D.	
		BBP	/	N.D.	
66	SMD diode	Pb	1876 ^{#1}	/	Pass
		Cd	BL	/	
		Hg	BL	/	
		Cr(Cr(VI))	BL	/	
		Br(PBBs&PBDEs)	BL	/	
		DIBP	/	N.D.	
		DEHP	/	N.D.	
		BBP	/	N.D.	
67	SMD audion	Pb	BL	/	Pass
		Cd	BL	/	
		Hg	BL	/	
		Cr(Cr(VI))	BL	/	
		Br(PBBs&PBDEs)	BL	/	
		DIBP	/	N.D.	
		DEHP	/	N.D.	
		BBP	/	N.D.	
DBP	/	N.D.			

68	SMD resistor	Pb	BL	/	Pass
		Cd	BL	/	
		Hg	BL	/	
		Cr(Cr(VI))	BL	/	
		Br(PBBs&PBDEs)	BL	/	
		DIBP	/	N.D.	
		DEHP	/	N.D.	
		BBP	/	N.D.	
		DBP	/	N.D.	
69	SMD capacitor	Pb	BL	/	Pass
		Cd	BL	/	
		Hg	BL	/	
		Cr(Cr(VI))	BL	/	
		Br(PBBs&PBDEs)	BL	/	
		DIBP	/	N.D.	
		DEHP	/	N.D.	
		BBP	/	N.D.	
		DBP	/	N.D.	
70	Green PCB of SMD PCB	Pb	BL	/	Pass
		Cd	BL	/	
		Hg	BL	/	
		Cr(Cr(VI))	BL	/	
		Br(PBBs&PBDEs)	BL	/	
		DIBP	/	N.D.	
		DEHP	/	N.D.	
		BBP	/	N.D.	
		DBP	/	N.D.	
71	Chip 1 of SMD PCB	Pb	BL	/	Pass
		Cd	BL	/	
		Hg	BL	/	
		Cr(Cr(VI))	BL	/	
		Br(PBBs&PBDEs)	BL	/	
		DIBP	/	N.D.	
		DEHP	/	N.D.	
		BBP	/	N.D.	
		DBP	/	N.D.	

72	Crystal oscillator of SMD PCB	Pb	BL	/	Pass
		Cd	BL	/	
		Hg	BL	/	
		Cr(Cr(VI))	BL	/	
		Br(PBBs&PBDEs)	BL	/	
		DIBP	/	N.D.	
		DEHP	/	N.D.	
		BBP	/	N.D.	
73	Yellow FPC	Pb	BL	/	Pass
		Cd	BL	/	
		Hg	BL	/	
		Cr(Cr(VI))	BL	/	
		Br(PBBs&PBDEs)	BL	/	
		DIBP	/	N.D.	
		DEHP	/	N.D.	
		BBP	/	N.D.	
74	Microphone body of yellow FPC	Pb	BL	/	Pass
		Cd	BL	/	
		Hg	BL	/	
		Cr(Cr(VI))	BL	/	
		Br(PBBs&PBDEs)	BL	/	
		DIBP	/	N.D.	
		DEHP	/	N.D.	
		BBP	/	N.D.	
75	Silvery metal sheet of yellow FPC	Pb	BL	/	Pass
		Cd	BL	/	
		Hg	BL	/	
		Cr(Cr(VI))	IN	N.D.	
		Br(PBBs&PBDEs)	/	/	
		DIBP	/	/	
		DEHP	/	/	
		BBP	/	/	
DBP	/	/			

6. Recorder – PCB2

76	Green PCB	Pb	BL	/	Pass
		Cd	BL	/	
		Hg	BL	/	
		Cr(Cr(VI))	BL	/	
		Br(PBBs&PBDEs)	BL	/	
		DIBP	/	N.D.	
		DEHP	/	N.D.	
		BBP	/	N.D.	
		DBP	/	N.D.	
77	Silvery metal shell of green PCB	Pb	BL	/	Pass
		Cd	BL	/	
		Hg	BL	/	
		Cr(Cr(VI))	BL	/	
		Br(PBBs&PBDEs)	/	/	
		DIBP	/	/	
		DEHP	/	/	
		BBP	/	/	
		DBP	/	/	
78	Yellow tape of green PCB	Pb	BL	/	Pass
		Cd	BL	/	
		Hg	BL	/	
		Cr(Cr(VI))	BL	/	
		Br(PBBs&PBDEs)	BL	/	
		DIBP	/	N.D.	
		DEHP	/	N.D.	
		BBP	/	N.D.	
		DBP	/	N.D.	
79	Black ceramic of green PCB	Pb	BL	/	Pass
		Cd	BL	/	
		Hg	BL	/	
		Cr(Cr(VI))	BL	/	
		Br(PBBs&PBDEs)	BL	/	
		DIBP	/	N.D.	
		DEHP	/	N.D.	
		BBP	/	N.D.	
		DBP	/	N.D.	

80	Metal rivets of green PCB	Pb	BL	/	Pass
		Cd	BL	/	
		Hg	BL	/	
		Cr(Cr(VI))	BL	/	
		Br(PBBs&PBDEs)	/	/	
		DIBP	/	/	
		DEHP	/	/	
		BBP	/	/	
81	Black plastic of black/white interface	Pb	BL	/	Pass
		Cd	BL	/	
		Hg	BL	/	
		Cr(Cr(VI))	BL	/	
		Br(PBBs&PBDEs)	BL	/	
		DIBP	/	N.D.	
		DEHP	/	N.D.	
		BBP	/	N.D.	
82	White plastic of black/white interface	Pb	BL	/	Pass
		Cd	BL	/	
		Hg	BL	/	
		Cr(Cr(VI))	BL	/	
		Br(PBBs&PBDEs)	BL	/	
		DIBP	/	N.D.	
		DEHP	/	N.D.	
		BBP	/	N.D.	
83	Metal plug pin of black/white interface	Pb	BL	/	Pass
		Cd	BL	/	
		Hg	BL	/	
		Cr(Cr(VI))	BL	/	
		Br(PBBs&PBDEs)	/	/	
		DIBP	/	/	
		DEHP	/	/	
		BBP	/	/	
DBP	/	/			

84	Chip 1 of SMD	Pb	BL	/	Pass
		Cd	BL	/	
		Hg	BL	/	
		Cr(Cr(VI))	BL	/	
		Br(PBBs&PBDEs)	BL	/	
		DIBP	/	N.D.	
		DEHP	/	N.D.	
		BBP	/	N.D.	
		DBP	/	N.D.	
85	Silvery crystals of SMD	Pb	BL	/	Pass
		Cd	BL	/	
		Hg	BL	/	
		Cr(Cr(VI))	BL	/	
		Br(PBBs&PBDEs)	BL	/	
		DIBP	/	N.D.	
		DEHP	/	N.D.	
		BBP	/	N.D.	
		DBP	/	N.D.	
86	Brown crystals of SMD	Pb	3321 ^{#1}	/	Pass
		Cd	BL	/	
		Hg	BL	/	
		Cr(Cr(VI))	BL	/	
		Br(PBBs&PBDEs)	BL	/	
		DIBP	/	N.D.	
		DEHP	/	N.D.	
		BBP	/	N.D.	
		DBP	/	N.D.	
87	Chip 2 of SMD	Pb	BL	/	Pass
		Cd	BL	/	
		Hg	BL	/	
		Cr(Cr(VI))	BL	/	
		Br(PBBs&PBDEs)	BL	/	
		DIBP	/	N.D.	
		DEHP	/	N.D.	
		BBP	/	N.D.	
		DBP	/	N.D.	

88	SMD capacitor	Pb	BL	/	Pass
		Cd	BL	/	
		Hg	BL	/	
		Cr(Cr(VI))	BL	/	
		Br(PBBs&PBDEs)	BL	/	
		DIBP	/	N.D.	
		DEHP	/	N.D.	
		BBP	/	N.D.	
		DBP	/	N.D.	
89	SMD resistor	Pb	BL	/	Pass
		Cd	BL	/	
		Hg	BL	/	
		Cr(Cr(VI))	BL	/	
		Br(PBBs&PBDEs)	BL	/	
		DIBP	/	N.D.	
		DEHP	/	N.D.	
		BBP	/	N.D.	
		DBP	/	N.D.	
90	Black FPC	Pb	BL	/	Pass
		Cd	BL	/	
		Hg	BL	/	
		Cr(Cr(VI))	BL	/	
		Br(PBBs&PBDEs)	BL	/	
		DIBP	/	N.D.	
		DEHP	/	N.D.	
		BBP	/	N.D.	
		DBP	/	N.D.	

7. Recorder –PCB3

91	Black PCB	Pb	BL	/	Pass
		Cd	BL	/	
		Hg	BL	/	
		Cr(Cr(VI))	BL	/	
		Br(PBBs&PBDEs)	BL	/	
		DIBP	/	N.D.	
		DEHP	/	N.D.	
		BBP	/	N.D.	
		DBP	/	N.D.	

92	Grey plastic of black PCB	Pb	BL	/	Pass
		Cd	BL	/	
		Hg	BL	/	
		Cr(Cr(VI))	BL	/	
		Br(PBBs&PBDEs)	BL	/	
		DIBP	/	N.D.	
		DEHP	/	N.D.	
		BBP	/	N.D.	
		DBP	/	N.D.	
93	Silvery metal shell of black PCB	Pb	BL	/	Pass
		Cd	BL	/	
		Hg	BL	/	
		Cr(Cr(VI))	BL	/	
		Br(PBBs&PBDEs)	/	/	
		DIBP	/	/	
		DEHP	/	/	
		BBP	/	/	
		DBP	/	/	
94	Black plastic of white/black interface	Pb	BL	/	Pass
		Cd	BL	/	
		Hg	BL	/	
		Cr(Cr(VI))	BL	/	
		Br(PBBs&PBDEs)	BL	/	
		DIBP	/	N.D.	
		DEHP	/	N.D.	
		BBP	/	N.D.	
		DBP	/	N.D.	
95	White plastic of white/black interface	Pb	BL	/	Pass
		Cd	BL	/	
		Hg	BL	/	
		Cr(Cr(VI))	BL	/	
		Br(PBBs&PBDEs)	BL	/	
		DIBP	/	N.D.	
		DEHP	/	N.D.	
		BBP	/	N.D.	
		DBP	/	N.D.	

96	Metal plug pin of white/black interface	Pb	BL	/	Pass
		Cd	BL	/	
		Hg	BL	/	
		Cr(Cr(VI))	BL	/	
		Br(PBBs&PBDEs)	/	/	
		DIBP	/	/	
		DEHP	/	/	
		BBP	/	/	
		DBP	/	/	
97	Chip 1 of SMD	Pb	BL	/	Pass
		Cd	BL	/	
		Hg	BL	/	
		Cr(Cr(VI))	BL	/	
		Br(PBBs&PBDEs)	BL	/	
		DIBP	/	N.D.	
		DEHP	/	N.D.	
		BBP	/	N.D.	
		DBP	/	N.D.	
98	SMD capacitor	Pb	BL	/	Pass
		Cd	BL	/	
		Hg	BL	/	
		Cr(Cr(VI))	BL	/	
		Br(PBBs&PBDEs)	BL	/	
		DIBP	/	N.D.	
		DEHP	/	N.D.	
		BBP	/	N.D.	
		DBP	/	N.D.	
99	SMD resistor	Pb	BL	/	Pass
		Cd	BL	/	
		Hg	BL	/	
		Cr(Cr(VI))	BL	/	
		Br(PBBs&PBDEs)	BL	/	
		DIBP	/	N.D.	
		DEHP	/	N.D.	
		BBP	/	N.D.	
		DBP	/	N.D.	

100	Brown sensor	Pb	BL	/	Pass
		Cd	BL	/	
		Hg	BL	/	
		Cr(Cr(VI))	BL	/	
		Br(PBBs&PBDEs)	BL	/	
		DIBP	/	N.D.	
		DEHP	/	N.D.	
		BBP	/	N.D.	
		DBP	/	N.D.	
101	White plastic	Pb	BL	/	Pass
		Cd	BL	/	
		Hg	BL	/	
		Cr(Cr(VI))	BL	/	
		Br(PBBs&PBDEs)	IN	N.D.	
		DIBP	/	N.D.	
		DEHP	/	N.D.	
		BBP	/	N.D.	
		DBP	/	N.D.	
102	Metal wire of white Line row	Pb	BL	/	Pass
		Cd	BL	/	
		Hg	BL	/	
		Cr(Cr(VI))	BL	/	
		Br(PBBs&PBDEs)	/	/	
		DIBP	/	/	
		DEHP	/	/	
		BBP	/	/	
		DBP	/	/	
103	Blue plastic plate of white Line row	Pb	BL	/	Pass
		Cd	BL	/	
		Hg	BL	/	
		Cr(Cr(VI))	BL	/	
		Br(PBBs&PBDEs)	BL	/	
		DIBP	/	N.D.	
		DEHP	/	N.D.	
		BBP	/	N.D.	
		DBP	/	N.D.	

8. Lens

104	Black metal ring	Pb	BL	/	Pass
		Cd	BL	/	
		Hg	BL	/	
		Cr(Cr(VI))	IN	N.D.	
		Br(PBBs&PBDEs)	/	/	
		DIBP	/	/	
		DEHP	/	/	
		BBP	/	/	
		DBP	/	/	
105	Black plastic	Pb	BL	/	Pass
		Cd	BL	/	
		Hg	BL	/	
		Cr(Cr(VI))	BL	/	
		Br(PBBs&PBDEs)	BL	/	
		DIBP	/	N.D.	
		DEHP	/	N.D.	
		BBP	/	N.D.	
		DBP	/	N.D.	
106	Glass with black edges	Pb	BL	/	Pass
		Cd	BL	/	
		Hg	BL	/	
		Cr(Cr(VI))	IN	N.D.	
		Br(PBBs&PBDEs)	BL	/	
		DIBP	/	N.D.	
		DEHP	/	N.D.	
		BBP	/	N.D.	
		DBP	/	N.D.	
107	Transparent Glass	Pb	BL	/	Pass
		Cd	BL	/	
		Hg	BL	/	
		Cr(Cr(VI))	BL	/	
		Br(PBBs&PBDEs)	BL	/	
		DIBP	/	N.D.	
		DEHP	/	N.D.	
		BBP	/	N.D.	
		DBP	/	N.D.	

9. Battery - PCB

108	Black PCB	Pb	BL	/	Pass
		Cd	BL	/	
		Hg	BL	/	
		Cr(Cr(VI))	BL	/	
		Br(PBBs&PBDEs)	BL	/	
		DIBP	/	N.D.	
		DEHP	/	N.D.	
		BBP	/	N.D.	
		DBP	/	N.D.	
109	Yellow colloid of black PCB	Pb	BL	/	Pass
		Cd	BL	/	
		Hg	BL	/	
		Cr(Cr(VI))	BL	/	
		Br(PBBs&PBDEs)	BL	/	
		DIBP	/	N.D.	
		DEHP	/	N.D.	
		BBP	/	N.D.	
		DBP	/	N.D.	
110	Chip 1 of SMD	Pb	BL	/	Pass
		Cd	BL	/	
		Hg	BL	/	
		Cr(Cr(VI))	BL	/	
		Br(PBBs&PBDEs)	BL	/	
		DIBP	/	N.D.	
		DEHP	/	N.D.	
		BBP	/	N.D.	
		DBP	/	N.D.	
111	SMD capacitor	Pb	BL	/	Pass
		Cd	BL	/	
		Hg	BL	/	
		Cr(Cr(VI))	BL	/	
		Br(PBBs&PBDEs)	BL	/	
		DIBP	/	N.D.	
		DEHP	/	N.D.	
		BBP	/	N.D.	
		DBP	/	N.D.	

112	SMD resistor	Pb	BL	/	Pass
		Cd	BL	/	
		Hg	BL	/	
		Cr(Cr(VI))	BL	/	
		Br(PBBs&PBDEs)	BL	/	
		DIBP	/	N.D.	
		DEHP	/	N.D.	
		BBP	/	N.D.	
		DBP	/	N.D.	
113	Black wire jacket	Pb	BL	/	Pass
		Cd	BL	/	
		Hg	BL	/	
		Cr(Cr(VI))	BL	/	
		Br(PBBs&PBDEs)	BL	/	
		DIBP	/	N.D.	
		DEHP	/	N.D.	
		BBP	/	N.D.	
		DBP	/	N.D.	
114	Yellow wire jacket	Pb	BL	/	Pass
		Cd	BL	/	
		Hg	BL	/	
		Cr(Cr(VI))	BL	/	
		Br(PBBs&PBDEs)	BL	/	
		DIBP	/	N.D.	
		DEHP	/	N.D.	
		BBP	/	N.D.	
		DBP	/	N.D.	
115	Red wire jacket	Pb	BL	/	Pass
		Cd	BL	/	
		Hg	BL	/	
		Cr(Cr(VI))	BL	/	
		Br(PBBs&PBDEs)	BL	/	
		DIBP	/	N.D.	
		DEHP	/	N.D.	
		BBP	/	N.D.	
		DBP	/	N.D.	

116	White plastic of white plastic terminal	Pb	BL	/	Pass
		Cd	BL	/	
		Hg	BL	/	
		Cr(Cr(VI))	BL	/	
		Br(PBBs&PBDEs)	BL	/	
		DIBP	/	N.D.	
		DEHP	/	N.D.	
		BBP	/	N.D.	
117	Metal plug pin of white plastic terminal	Pb	BL	/	Pass
		Cd	BL	/	
		Hg	BL	/	
		Cr(Cr(VI))	BL	/	
		Br(PBBs&PBDEs)	/	/	
		DIBP	/	/	
		DEHP	/	/	
		BBP	/	/	
DBP	/	/			

10. Battery ontology

118	Silvery metal shell	Pb	BL	/	Pass
		Cd	BL	/	
		Hg	BL	/	
		Cr(Cr(VI))	IN	N.D.	
		Br(PBBs&PBDEs)	/	/	
		DIBP	/	/	
		DEHP	/	/	
		BBP	/	/	
119	Green tape	Pb	BL	/	Pass
		Cd	BL	/	
		Hg	BL	/	
		Cr(Cr(VI))	BL	/	
		Br(PBBs&PBDEs)	BL	/	
		DIBP	/	N.D.	
		DEHP	/	N.D.	
		BBP	/	N.D.	
DBP	/	N.D.			

120	Transparent rubber gasket	Pb	BL	/	Pass
		Cd	BL	/	
		Hg	BL	/	
		Cr(Cr(VI))	BL	/	
		Br(PBBs&PBDEs)	BL	/	
		DIBP	/	N.D.	
		DEHP	/	N.D.	
		BBP	/	N.D.	
		DBP	/	N.D.	
121	Blue tape	Pb	BL	/	Pass
		Cd	BL	/	
		Hg	BL	/	
		Cr(Cr(VI))	BL	/	
		Br(PBBs&PBDEs)	BL	/	
		DIBP	/	N.D.	
		DEHP	/	N.D.	
		BBP	/	N.D.	
		DBP	/	N.D.	

Note: 1. N.D. = Not Detected (<MDL) MDL = Method Detection Limit
mg/kg = ppm = 0.0001% / = Not Regulated or Not Applicable
2. BL = Below the XRF screening limit
IN = Further chemical test will be conducted when the screening result inconclusive
OL = Further chemical test will be conducted while the result is above the screening limit.
3. For metal samples, the sample is negative for Cr(VI), if the Cr(VI) concentration is less than 0.10 µg/cm², the coating is considered a non- Cr(VI) based coating;
The sample is positive for Cr(VI), if the Cr(VI) concentration is greater than 0.13 µg/cm²,
The sample coating is considered to contain Cr(VI);
The result is considered to be inconclusive, the Cr(VI) concentration is between the 0.10 µg/cm² and 0.13 µg/cm², Unavoidable coating variations may influence the determination.
Because the storage condition and production date of the sample are not known, the test results of the sample of hexavalent chromium can only represent the state of hexavalent chromium in the samples tested.

Remark: 1. The screening results are only used for reference.
2. When conducting the test for PBBs&PBDEs, XRF was introduced to screen Br Exclusively; When conducting the test for Hexavalent Chromium, XRF was introduced to screen Chromium exclusively.
3. According to the client's statement, the material of the sample(s) comply with RoHS directive 2011/65/EU Annex III Exemption, Corresponding exemption clause:
#1 7(c)-I Lead is exempted as Electrical and electronic components containing lead in a glass or ceramic other than dielectric ceramic in capacitors, e.g. piezoelectronic devices, or in a glass or ceramic matrix compound.
4. Part No.78 Resubmitted Date: 2021-10-11.
5. The test results in this report are only responsible for the tested samples.
According to the client's statement, series models are the same material as the test models.
The series model samples provided by customers have not been tested in this report.

Test Method:

When screening results exceed the XRF screening limit in IEC 62321-3-1: 2013, further use of chemical methods are required to test the Lead(Pb), Cadmium(Cd), Mercury(Hg), Hexavalent Chromium(Cr(VI)), Polybrominated Biphenyls(PBBs) and Polybrominated Diphenyl Ethers(PBDEs)

1. XRF screening limits in mg/kg for regulated elements according to IEC 62321-3-1:2013

Element	Limit of IEC 62321-3-1:2013 (mg/kg)		
	Polymers	Metals	Composite material
Pb	$BL \leq (700-3\sigma) < X$ $< (1300+3\sigma) \leq OL$	$BL \leq (700-3\sigma) < X$ $< (1300+3\sigma) \leq OL$	$BL \leq (500-3\sigma) < X$ $< (1500+3\sigma) \leq OL$
Cd	$BL \leq (70-3\sigma) < X <$ $(130+3\sigma) \leq OL$	$BL \leq (70-3\sigma) < X <$ $(130+3\sigma) \leq OL$	$LOD < X < (150+3\sigma)$ $\leq OL$
Hg	$BL \leq (700-3\sigma) < X$ $< (1300+3\sigma) \leq OL$	$BL \leq (700-3\sigma) < X$ $< (1300+3\sigma) \leq OL$	$BL \leq (500-3\sigma) < X$ $< (1500+3\sigma) \leq OL$
Cr	$BL \leq (700-3\sigma) < X$	$BL \leq (700-3\sigma) < X$	$BL \leq (500-3\sigma) < X$
Br	$BL \leq (300-3\sigma) < X$	/	$BL \leq (250-3\sigma) < X$

Note: BL= Below the XRF screening limit OL=Over the XRF screening limit

X=The symbol "X" marks the region where further investigation is necessary.

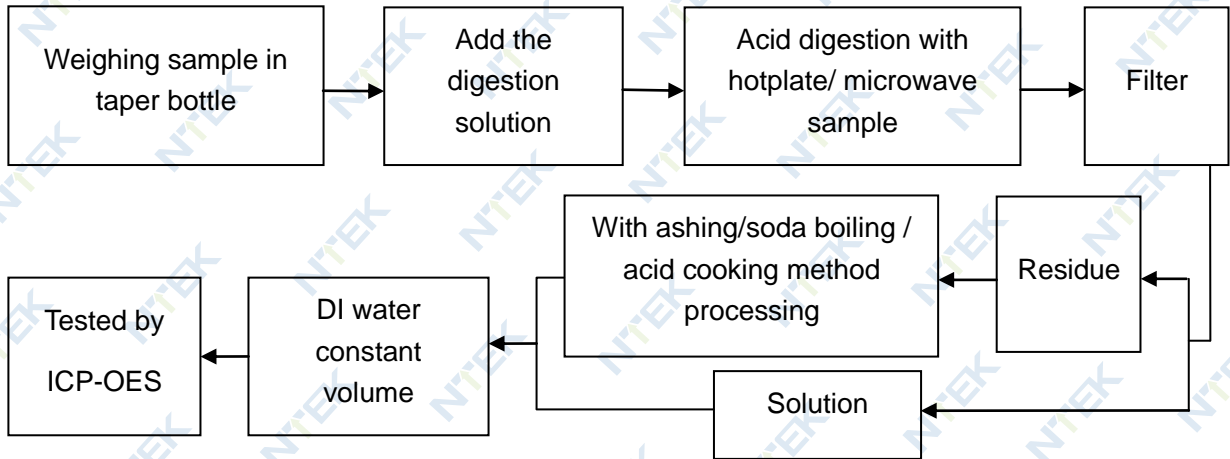
3σ =The reproducibility of analytical instruments LOD= Detection limit

2. Chemical Test

Test item	Test method	Test instrument	MDL	Limit
Lead (Pb)	IEC 62321-5:2013 Ed.1.0	ICP-OES	10 mg/kg	1000 mg/kg
Cadmium (Cd)	IEC 62321-5:2013 Ed.1.0	ICP-OES	10 mg/kg	100 mg/kg
Mercury (Hg)	IEC 62321-4:2013+AMD1:2017	ICP-OES	10 mg/kg	1000 mg/kg
Hexavalent Chromium(Cr(VI))	IEC 62321-7-1:2015 Ed.1.0	UV-Vis	$0.10 \mu\text{g}/\text{cm}^2$	1000 mg/kg
	IEC 62321-7-2:2017 Ed.1.0		10 mg/kg	
Polybrominated Biphenyls(PBBs)	IEC 62321-6:2015 Ed.1.0	GC-MS	100 mg/kg	1000 mg/kg
Polybrominated, Diphenyl Ethers(PBDEs)	IEC 62321-6:2015 Ed.1.0	GC-MS	100 mg/kg	1000 mg/kg
Bis-(2-ethylhexyl) Phthalate (DEHP)	IEC 62321-8:2017 Ed.1.0	GC-MS	50 mg/kg	1000 mg/kg
Benzyl butyl Phthalate (BBP)	IEC 62321-8:2017 Ed.1.0	GC-MS	50 mg/kg	1000 mg/kg
Dibutyl Phthalate (DBP)	IEC 62321-8:2017 Ed.1.0	GC-MS	50 mg/kg	1000 mg/kg
Diisobutyl Phthalate(DIBP)	IEC 62321-8:2017 Ed.1.0	GC-MS	50 mg/kg	1000 mg/kg

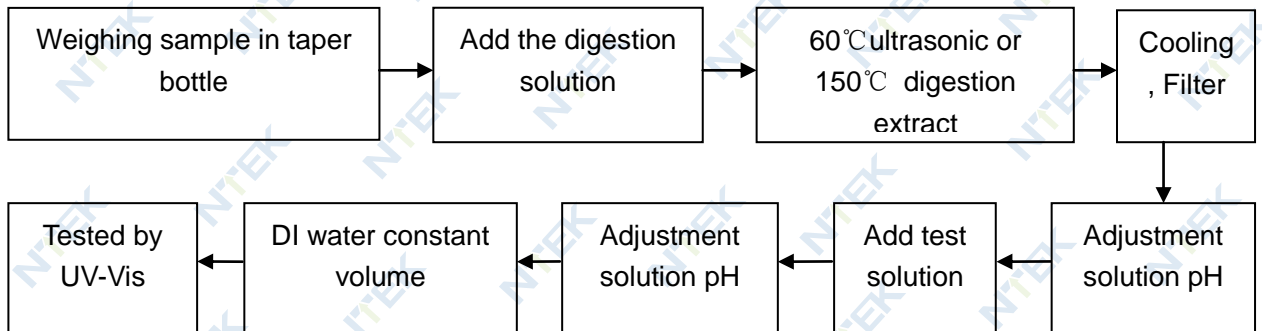
Test Flow:

1. Lead(Pb), Cadmium(Cd) , Mercury (Hg)

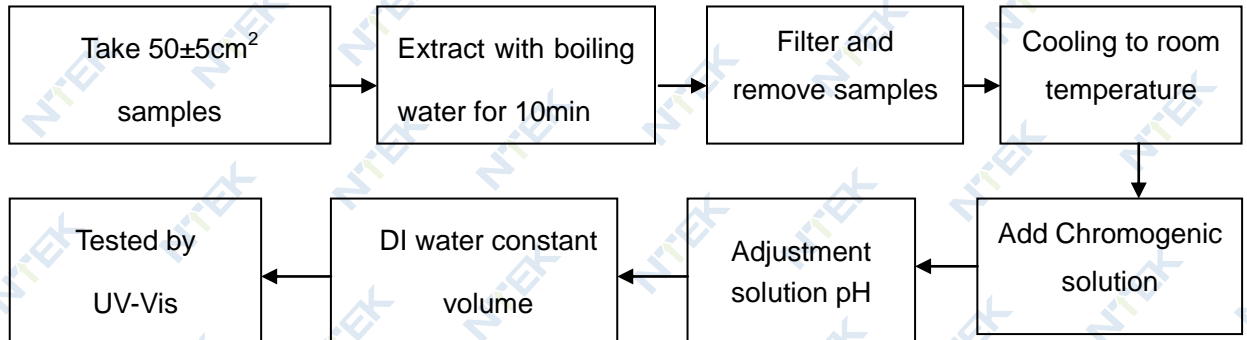


2. Hexavalent Chromium(Cr(VI))

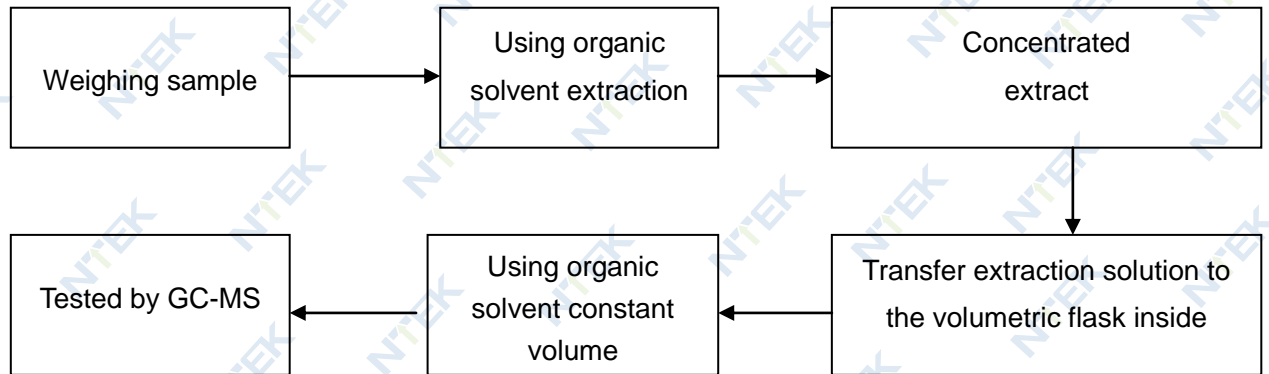
2.1 Non- metal sample(s)



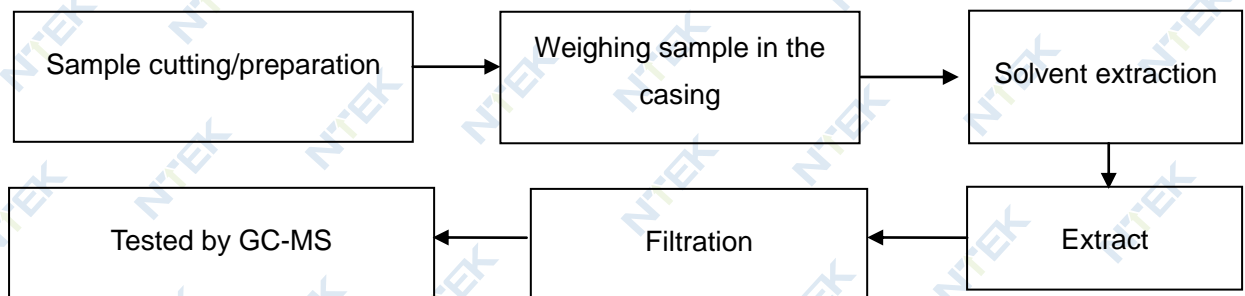
2.2 Metal sample(s)



3. PBBs/ PBDEs



4. Phthalates



Sample photo(s):



Fig.1



Fig.2



Fig.3

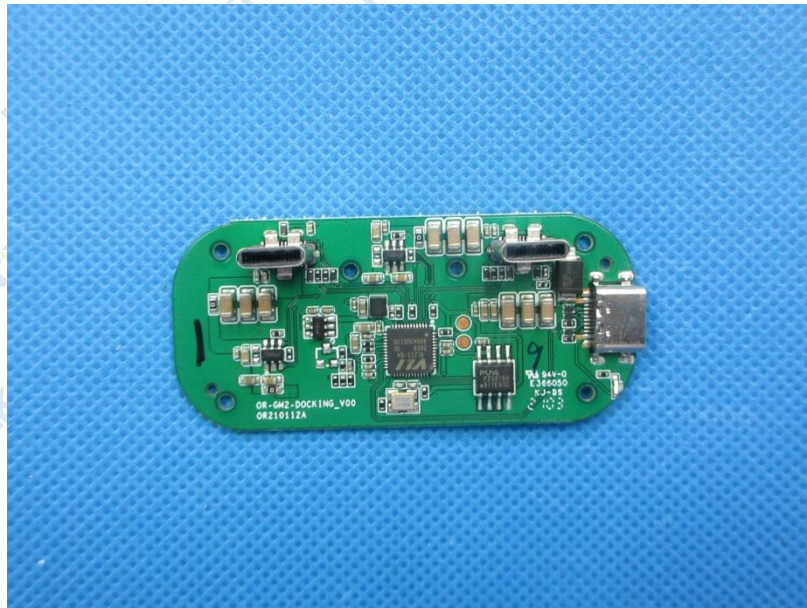


Fig.4

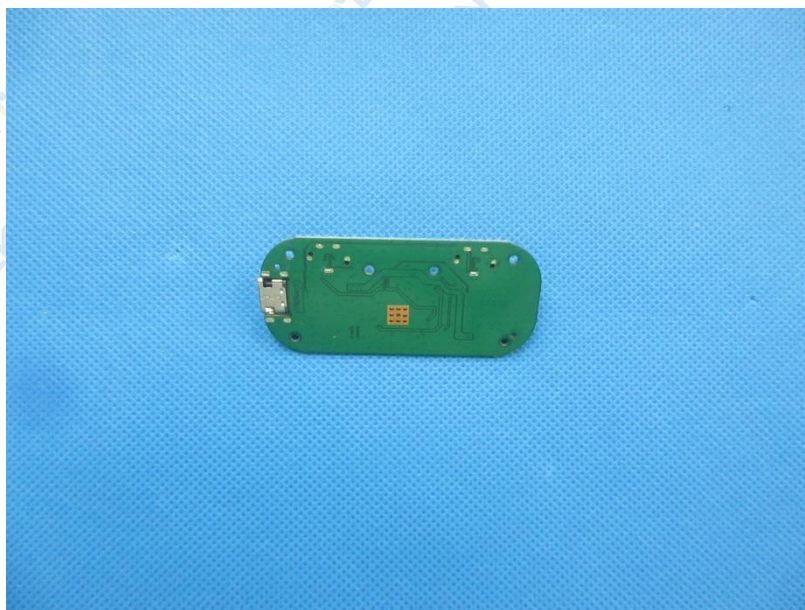


Fig.5



Fig.6



Fig.7



Fig.8

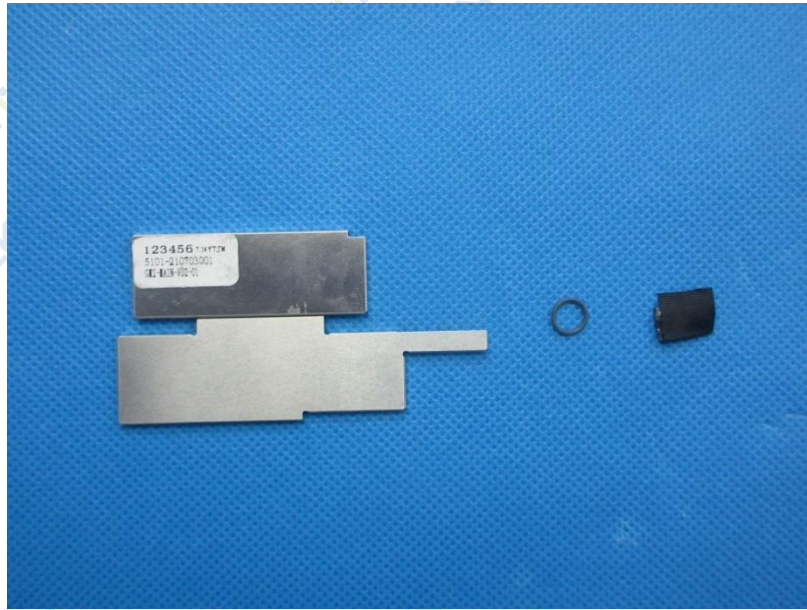


Fig.9

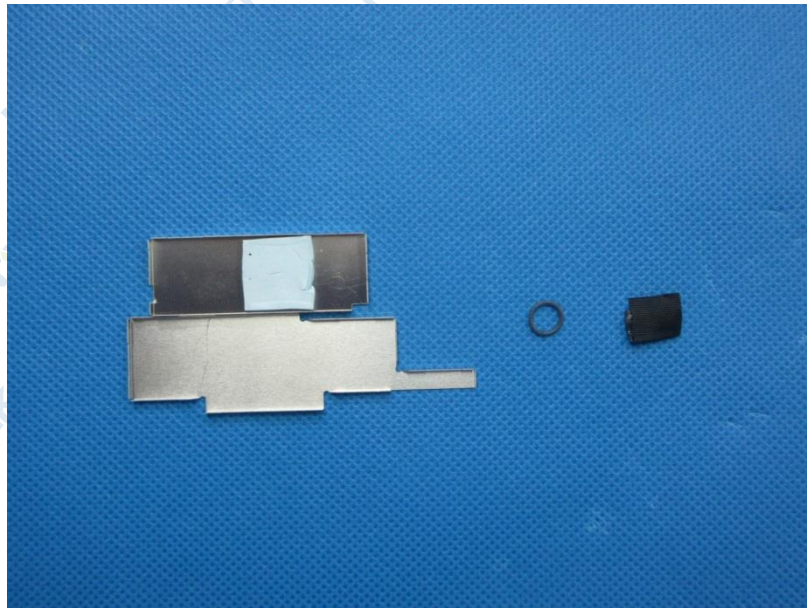


Fig.10

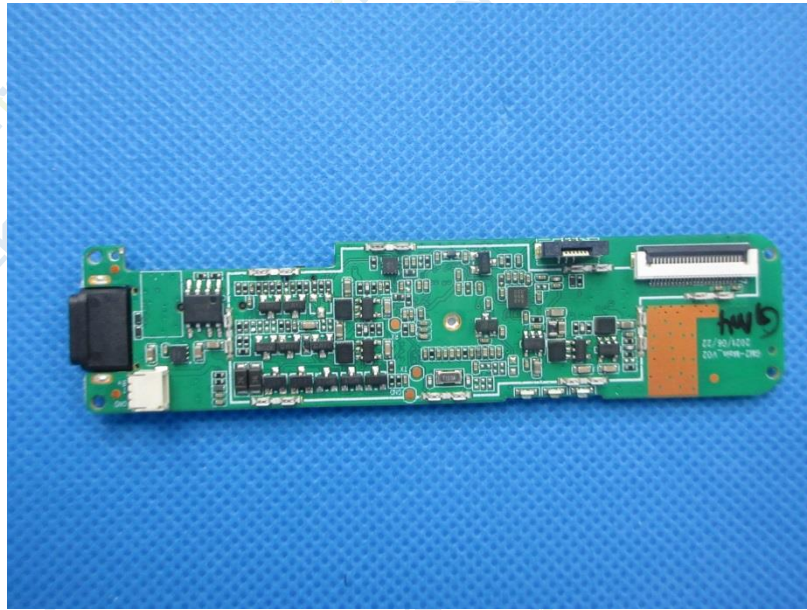


Fig.11

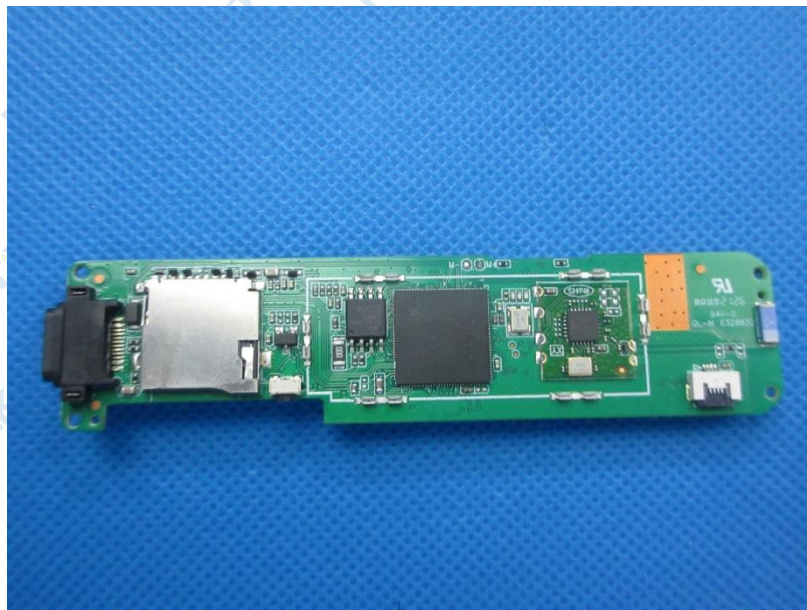


Fig.12

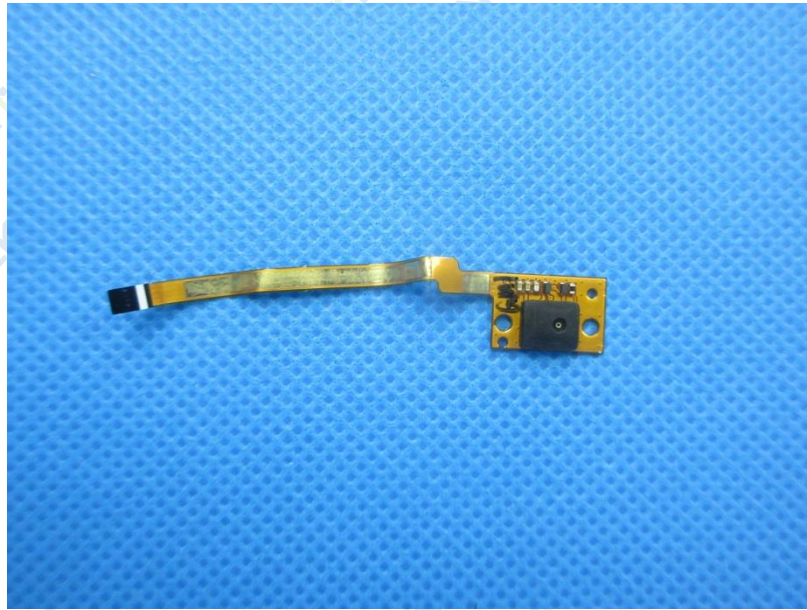


Fig.13

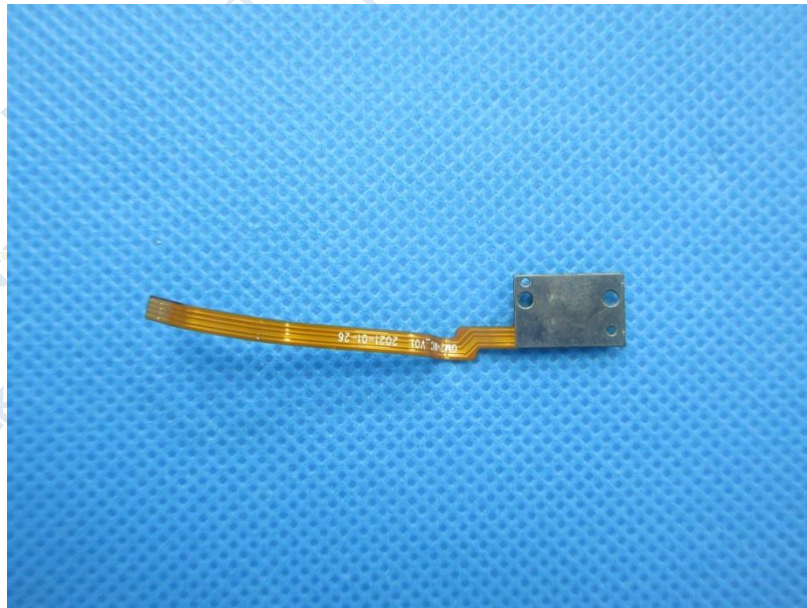


Fig.14



Fig.15

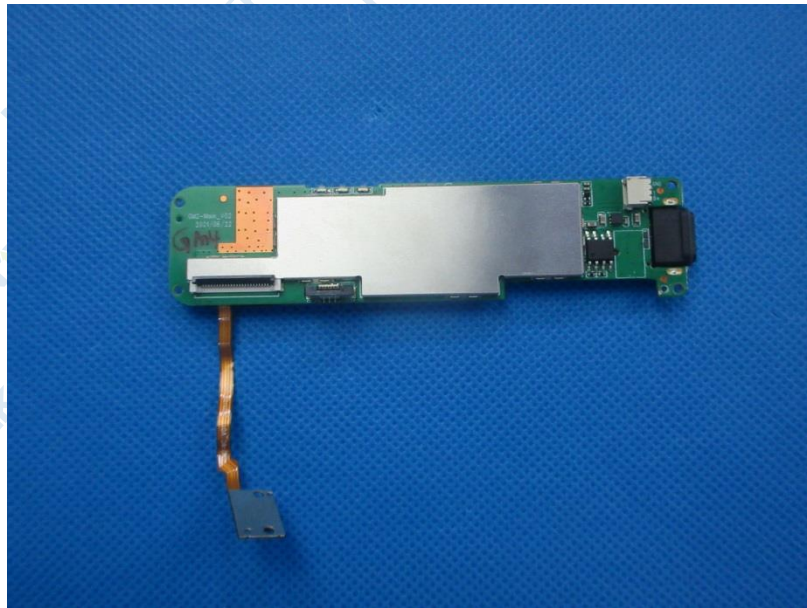


Fig.16

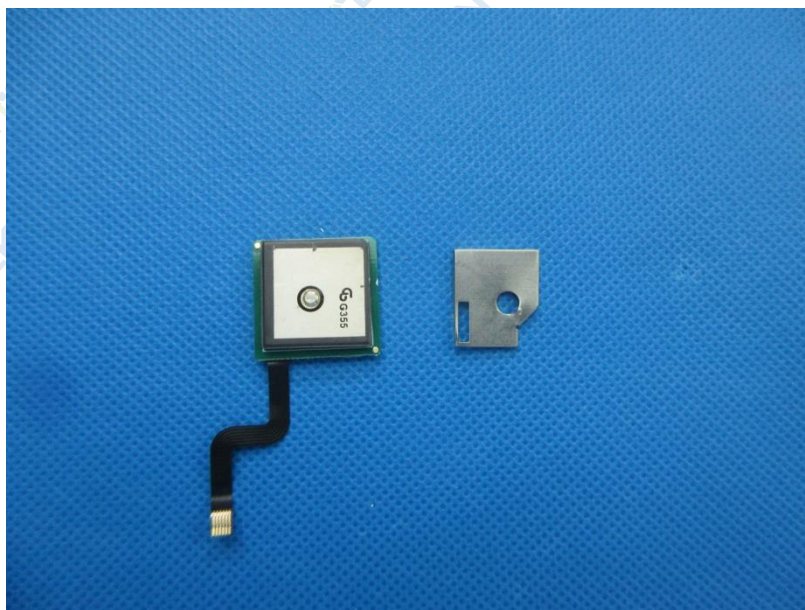


Fig.17

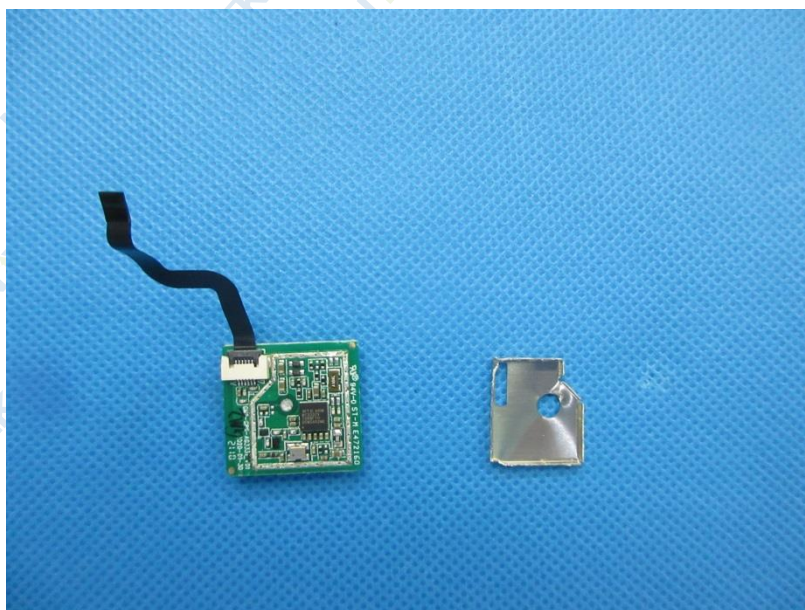


Fig.18

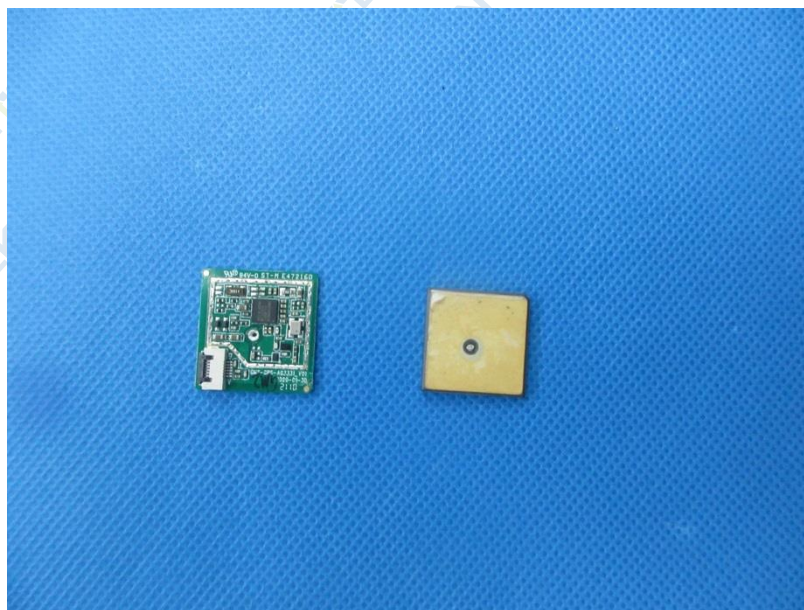


Fig.19

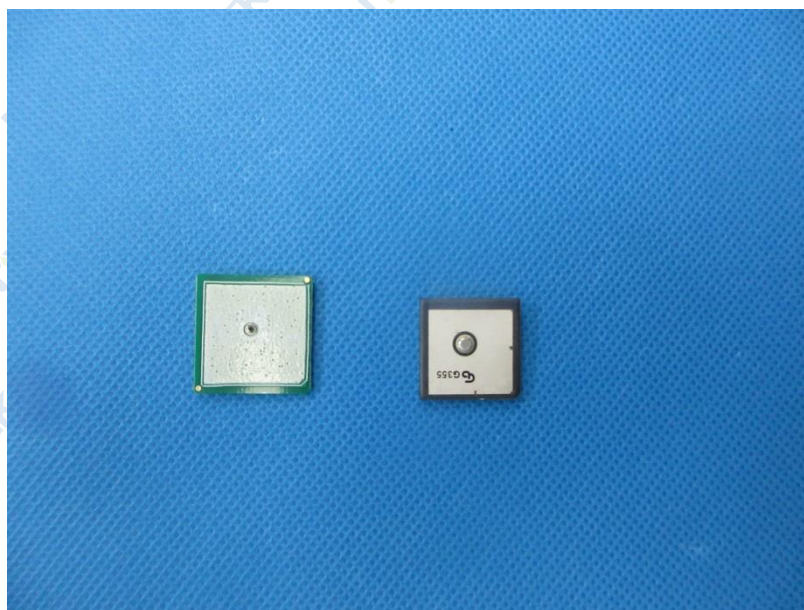


Fig.20

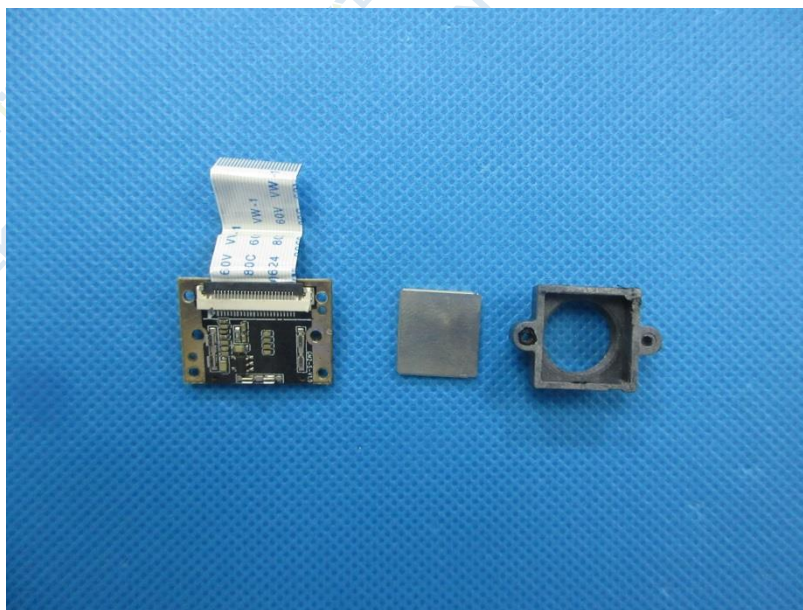


Fig.21

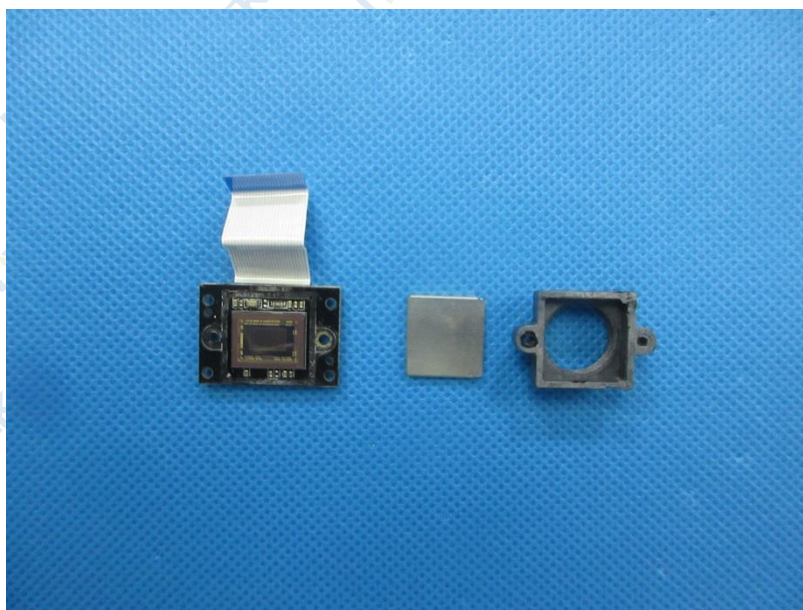


Fig.22

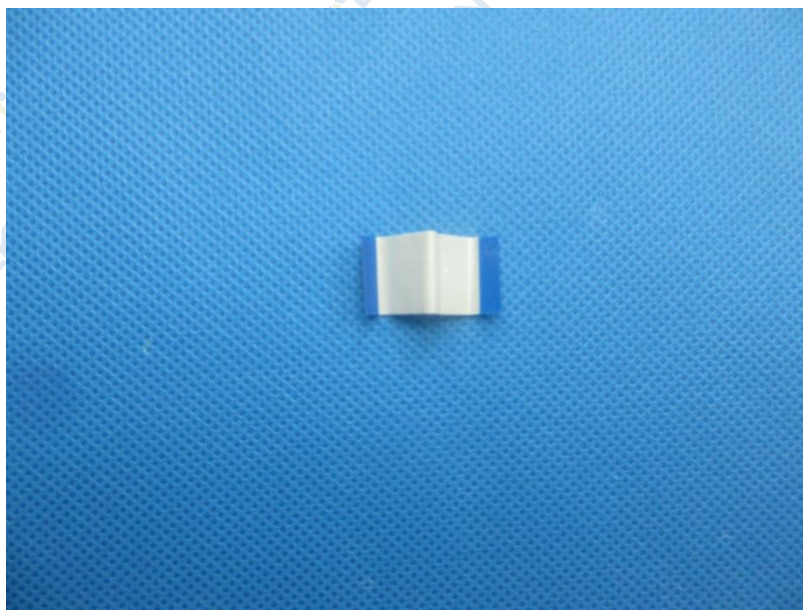


Fig.23



Fig.24

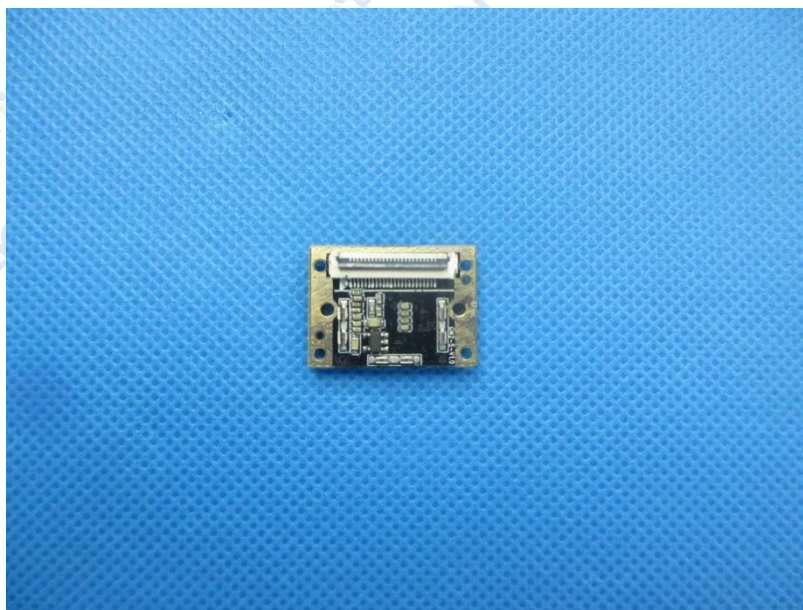


Fig.25

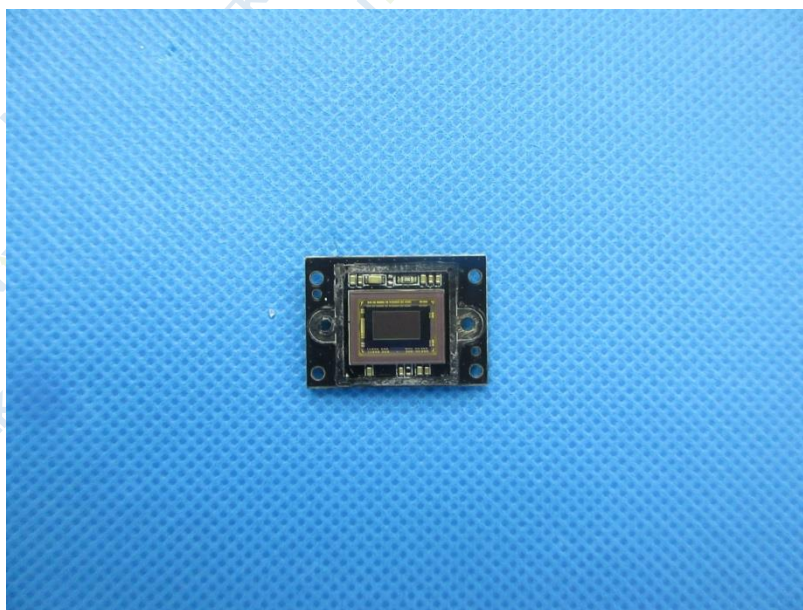


Fig.26

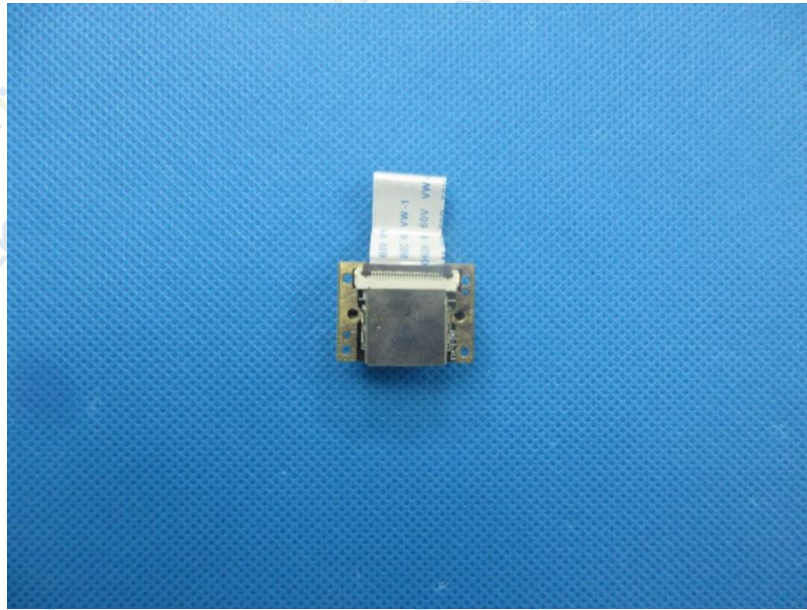


Fig.27



Fig.28

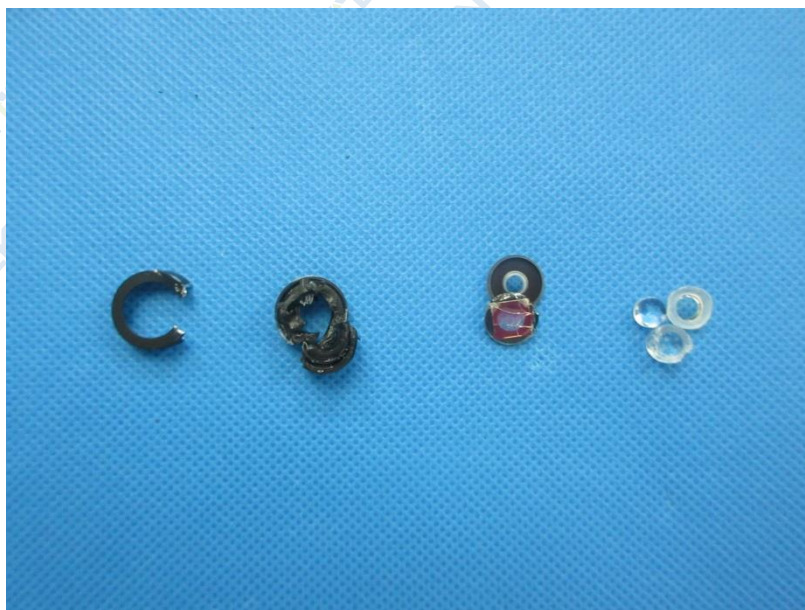


Fig.29

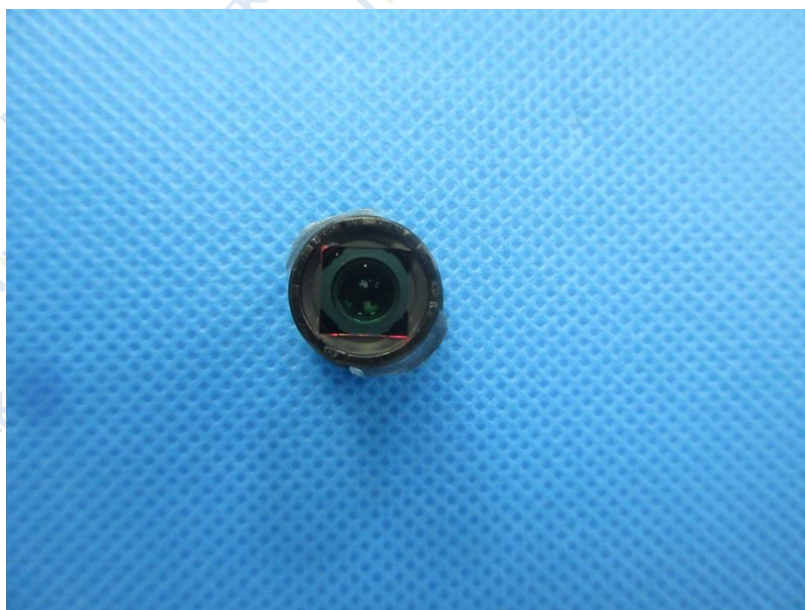


Fig.30

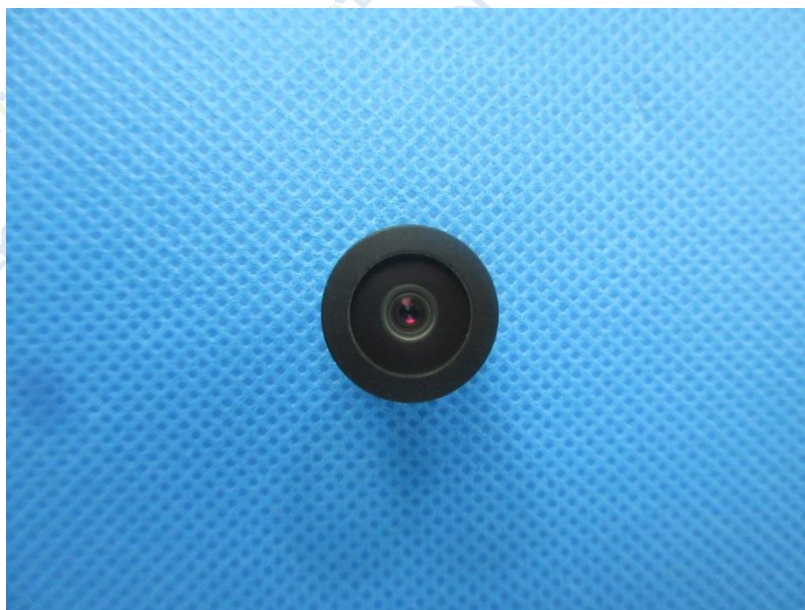


Fig.31



Fig.32

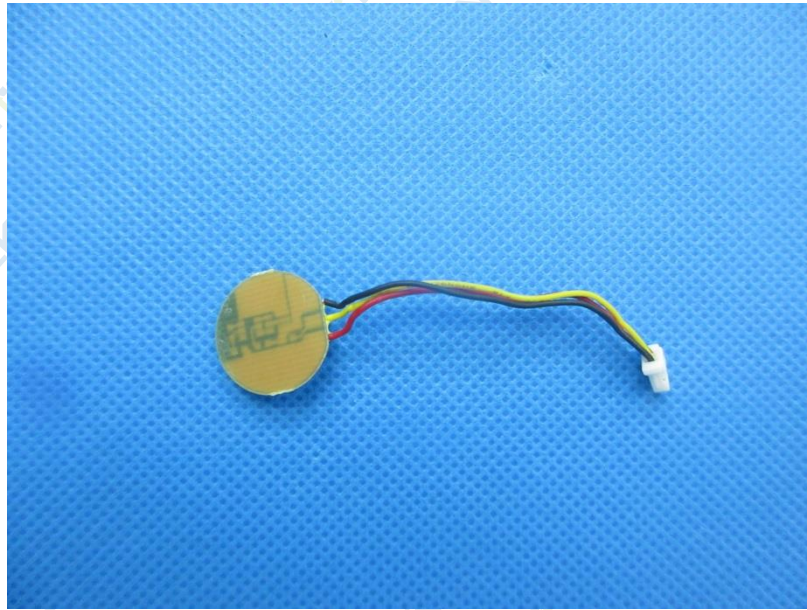


Fig.33

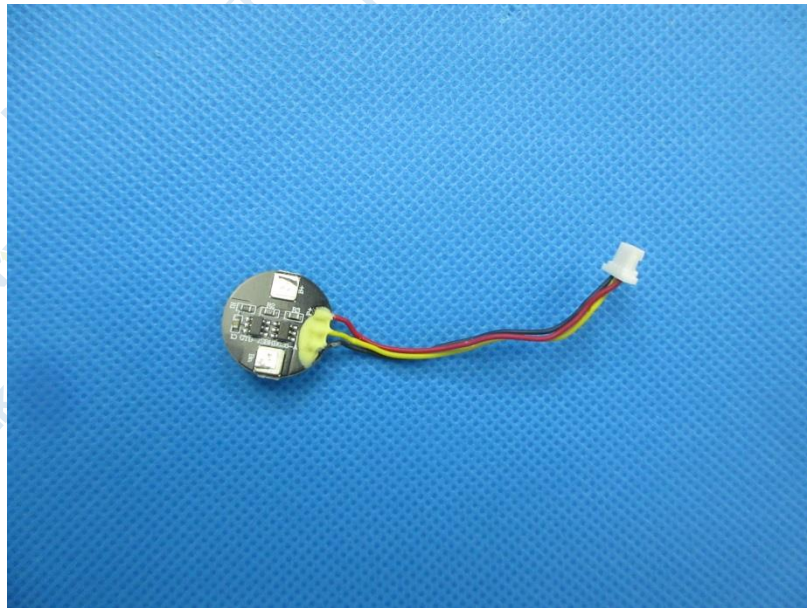


Fig.34

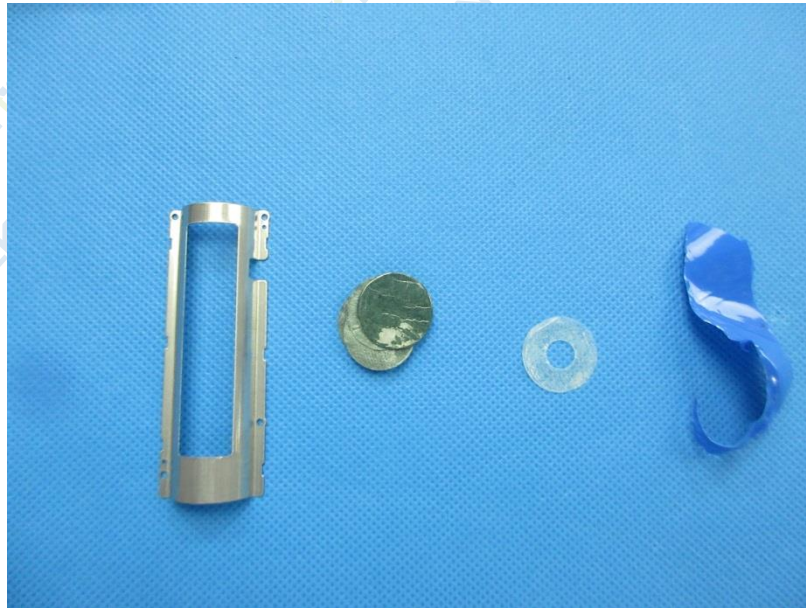


Fig.35

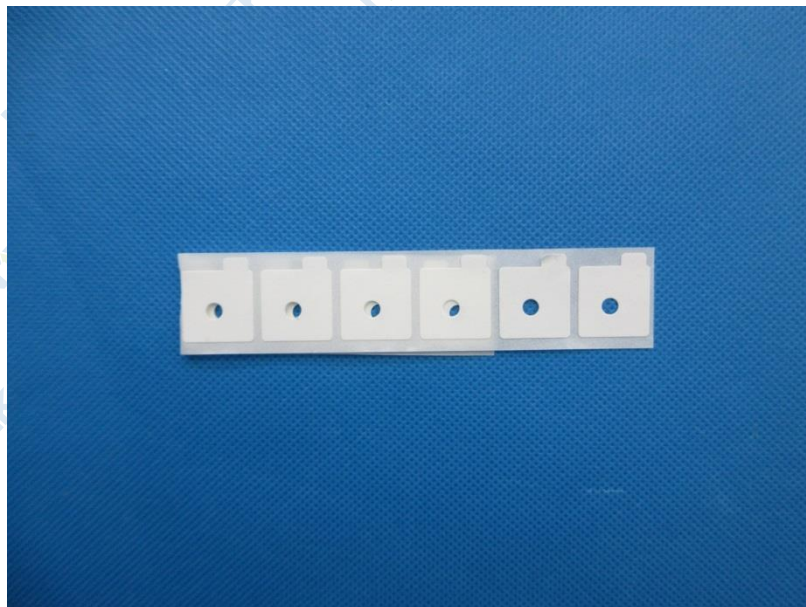


Fig.36

****End of Report****

The test results or data in this report will be used only for education, scientific research, enterprise product development and internal quality control or other purposes.

The test report is effective only with both signature and specialized stamp, the result(s) shown in this report refer only to the sample(s) tested. Without written approval of NTEK, this report can't be reproduced except in full.