

System Check_Head_2450MHz

DUT: D2450V2 - SN736

Communication System: CW; Frequency: 2450.0 MHz; Duty Cycle: 1:1

Medium: HSL_2450_230406 Medium parameters used: $f = 2450.0$ MHz; $\sigma = 1.84$ S/m; $\epsilon_r = 38.9$

Ambient Temperature: 23.5°C; Liquid Temperature: 22.5°C

DASY6 Configuration:

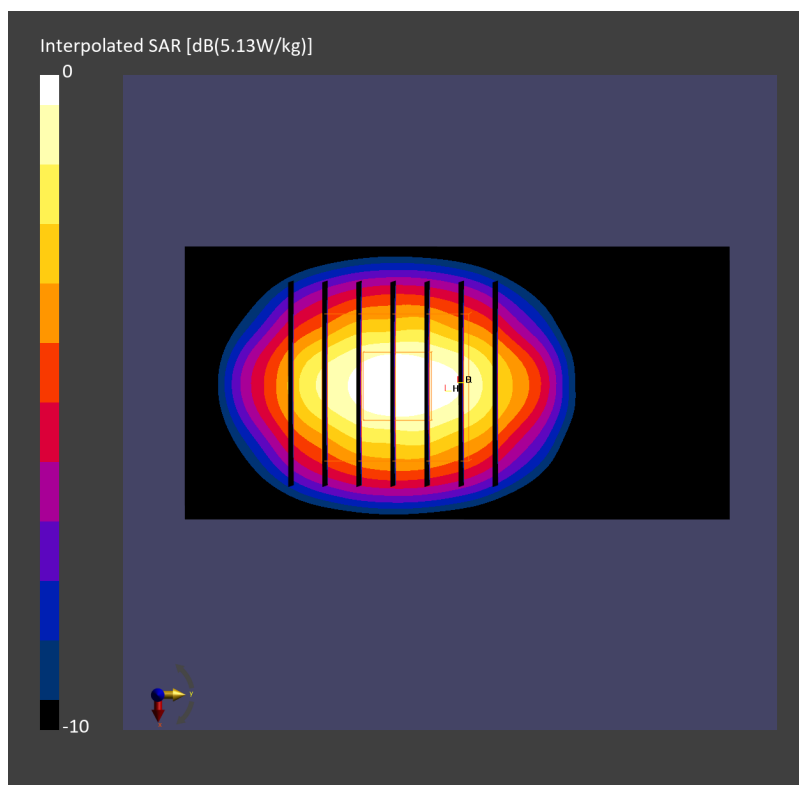
- Probe: EX3DV4 - SN7306; ConvF(7.54, 7.54, 7.54); Calibrated: 2022-07-28
- Sensor-Surface: 1.4 mm
- Electronics: DAE4 Sn1694; Calibrated: 2022-11-18
- Phantom: ELI V8.0 (20deg probe tilt); Serial: 2156; Section: Flat
- Measurement Software: 16.2.4.1816
- UID: CW, 0--

Pin=17.0dBm/Area Scan (40.0 mm x 80.0 mm): Measurement Grid: 10.0 mm x 10.0 mm
SAR (1g) = 2.48 W/kg; SAR (10g) = 1.15 W/kg;

Pin=17.0dBm/Zoom Scan (30.0 mm x 30.0 mm x 30.0 mm): Measurement Grid: 5.0 mm x 5.0 mm x 1.5 mm

Power Drift = -0.02 dB

SAR (1g) = 2.44 W/kg; SAR (8g) = 1.26 W/kg; SAR (10g) = 1.14 W/kg



System Check_Head_5250MHz

DUT: D5GHzV2 - SN1171

Communication System: CW; Frequency: 5250.0 MHz; Duty Cycle: 1:1
Medium: HSL_5G_230407 Medium parameters used: $f= 5250.0$ MHz; $\sigma= 4.74$ S/m; $\epsilon_r = 37.1$
Ambient Temperature: 23.5°C; Liquid Temperature: 22.5°C

DASY6 Configuration:

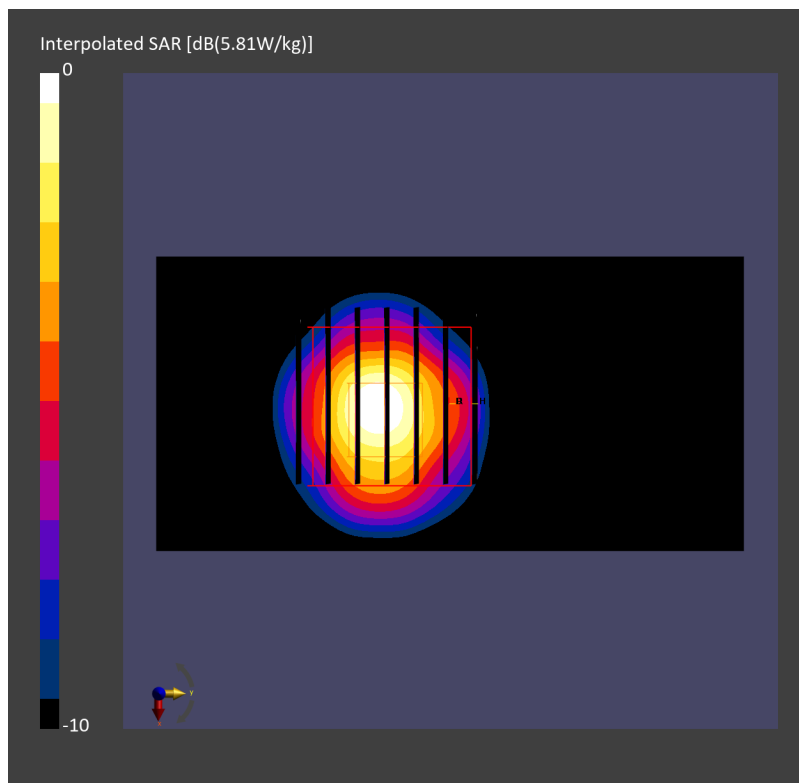
- Probe: EX3DV4 - SN7306; ConvF(5.34, 5.34, 5.34); Calibrated: 2022-07-28
- Sensor-Surface: 1.4 mm
- Electronics: DAE4 Sn1694; Calibrated: 2022-11-18
- Phantom: ELI V8.0 (20deg probe tilt); Serial: 2156; Section: Flat
- Measurement Software: 16.2.4.1816
- UID: CW, 0--

Pin=17.0dBm/Area Scan (40.0 mm x 80.0 mm): Measurement Grid: 10.0 mm x 10.0 mm
SAR (1g) = 3.62 W/kg; SAR (10g) = 1.04 W/kg;

Pin=17.0dBm/Zoom Scan (22.0 mm x 22.0 mm x 22.0 mm): Measurement Grid: 4.0 mm x 4.0 mm x 1.4 mm

Power Drift = -0.03 dB

SAR (1g) = 3.74 W/kg; SAR (8g) = 1.24 W/kg; SAR (10g) = 1.06 W/kg



System Check_Head_5600MHz

DUT: D5GHzV2 - SN1171

Communication System: CW; Frequency: 5600.0 MHz; Duty Cycle: 1:1

Medium: HSL_5G_230407 Medium parameters used: $f = 5600.0$ MHz; $\sigma = 5.15$ S/m; $\epsilon_r = 36.5$

Ambient Temperature: 23.5°C; Liquid Temperature: 22.5°C

DASY6 Configuration:

- Probe: EX3DV4 - SN7306; ConvF(4.66, 4.66, 4.66); Calibrated: 2022-07-28
- Sensor-Surface: 1.4 mm
- Electronics: DAE4 Sn1694; Calibrated: 2022-11-18
- Phantom: ELI V8.0 (20deg probe tilt); Serial: 2156; Section: Flat
- Measurement Software: 16.2.4.1816
- UID: CW, 0--

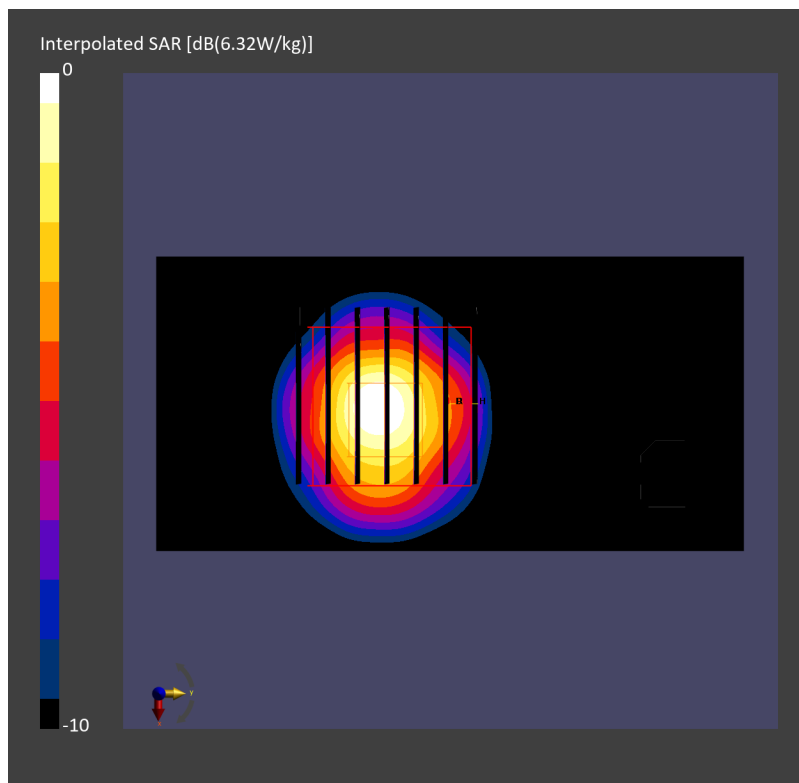
Pin=17.0dBm/Area Scan (40.0 mm x 80.0 mm): Measurement Grid: 10.0 mm x 10.0 mm

SAR (1g) = 4.01 W/kg; SAR (10g) = 1.16 W/kg;

Pin=17.0dBm/Zoom Scan (22.0 mm x 22.0 mm x 22.0 mm): Measurement Grid: 4.0 mm x 4.0 mm x 1.4 mm

Power Drift = -0.03 dB

SAR (1g) = 4.16 W/kg; SAR (8g) = 1.38 W/kg; SAR (10g) = 1.17 W/kg



System Check_Head_5750MHz

DUT: D5GHzV2 - SN1171

Communication System: CW; Frequency: 5750.0 MHz; Duty Cycle: 1:1

Medium: HSL_5G_230407 Medium parameters used: $f = 5750.0$ MHz; $\sigma = 5.33$ S/m; $\epsilon_r = 36.2$

Ambient Temperature: 23.5°C; Liquid Temperature: 22.5°C

DASY6 Configuration:

- Probe: EX3DV4 - SN7306; ConvF(4.96, 4.96, 4.96); Calibrated: 2022-07-28
- Sensor-Surface: 1.4 mm
- Electronics: DAE4 Sn1694; Calibrated: 2022-11-18
- Phantom: ELI V8.0 (20deg probe tilt); Serial: 2156; Section: Flat
- Measurement Software: 16.2.4.1816
- UID: CW, 0--

Pin=17.0dBm/Area Scan (40.0 mm x 80.0 mm): Measurement Grid: 10.0 mm x 10.0 mm
SAR (1g) = 3.70 W/kg; SAR (10g) = 1.06 W/kg;

Pin=17.0dBm/Zoom Scan (22.0 mm x 22.0 mm x 22.0 mm): Measurement Grid: 4.0 mm x 4.0 mm x 1.4 mm

Power Drift = 0.02 dB

SAR (1g) = 3.89 W/kg; SAR (8g) = 1.28 W/kg; SAR (10g) = 1.09 W/kg

