

top

Base unit Channel 1

MKA -127 KHz

REF 107.0 dB μ V

#AT 30 dB

-59.71 dB

PEAK

LOG

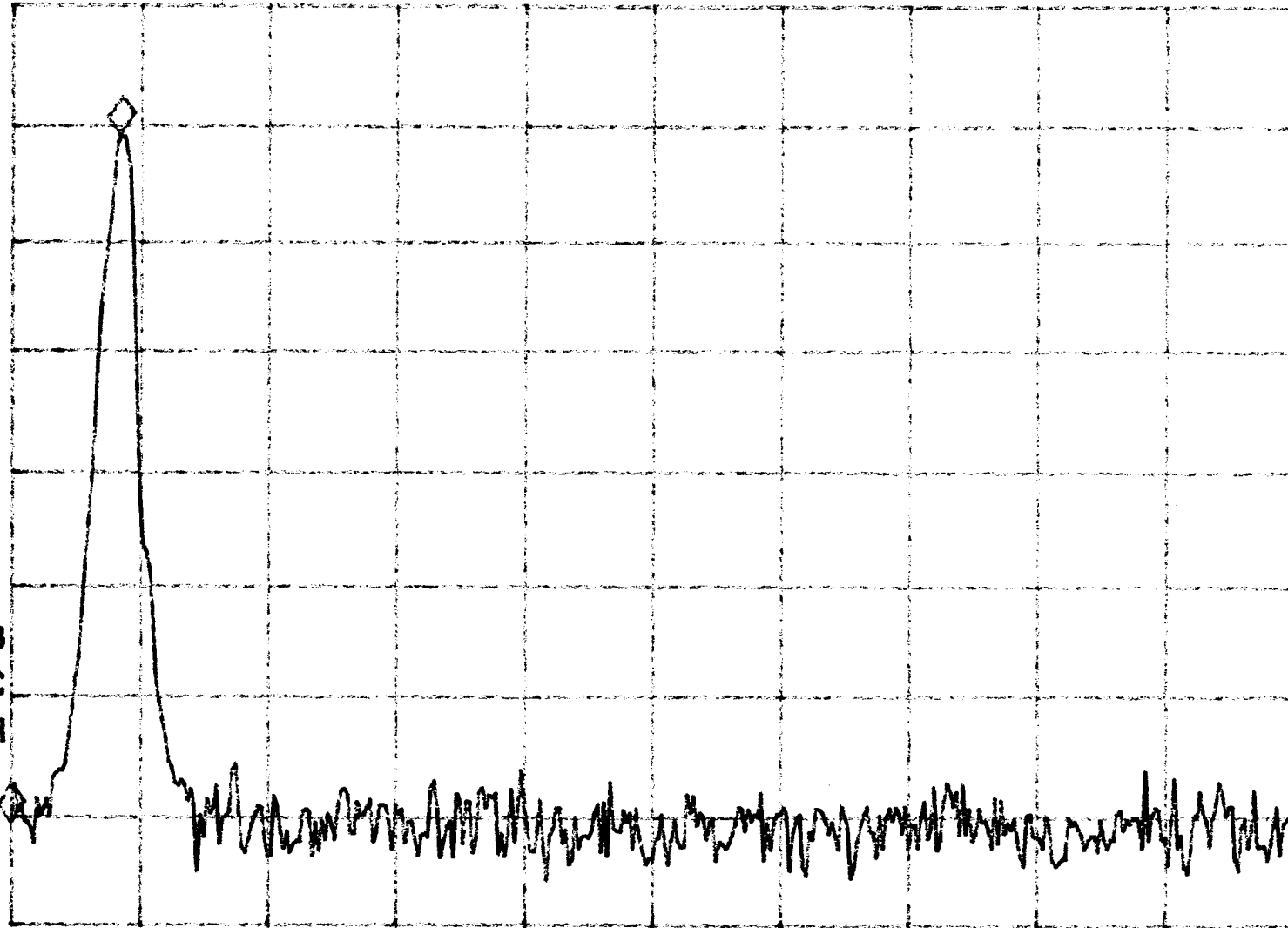
10

dB/

VA SB

SC FC

CORR



START 902.000 MHz

STOP 903.498 MHz

#RES BW 10 KHz

#VBW 3 MHz

SWP 44.9 msec

hp

Base unit Channel 40

MKR 24.83 MHz

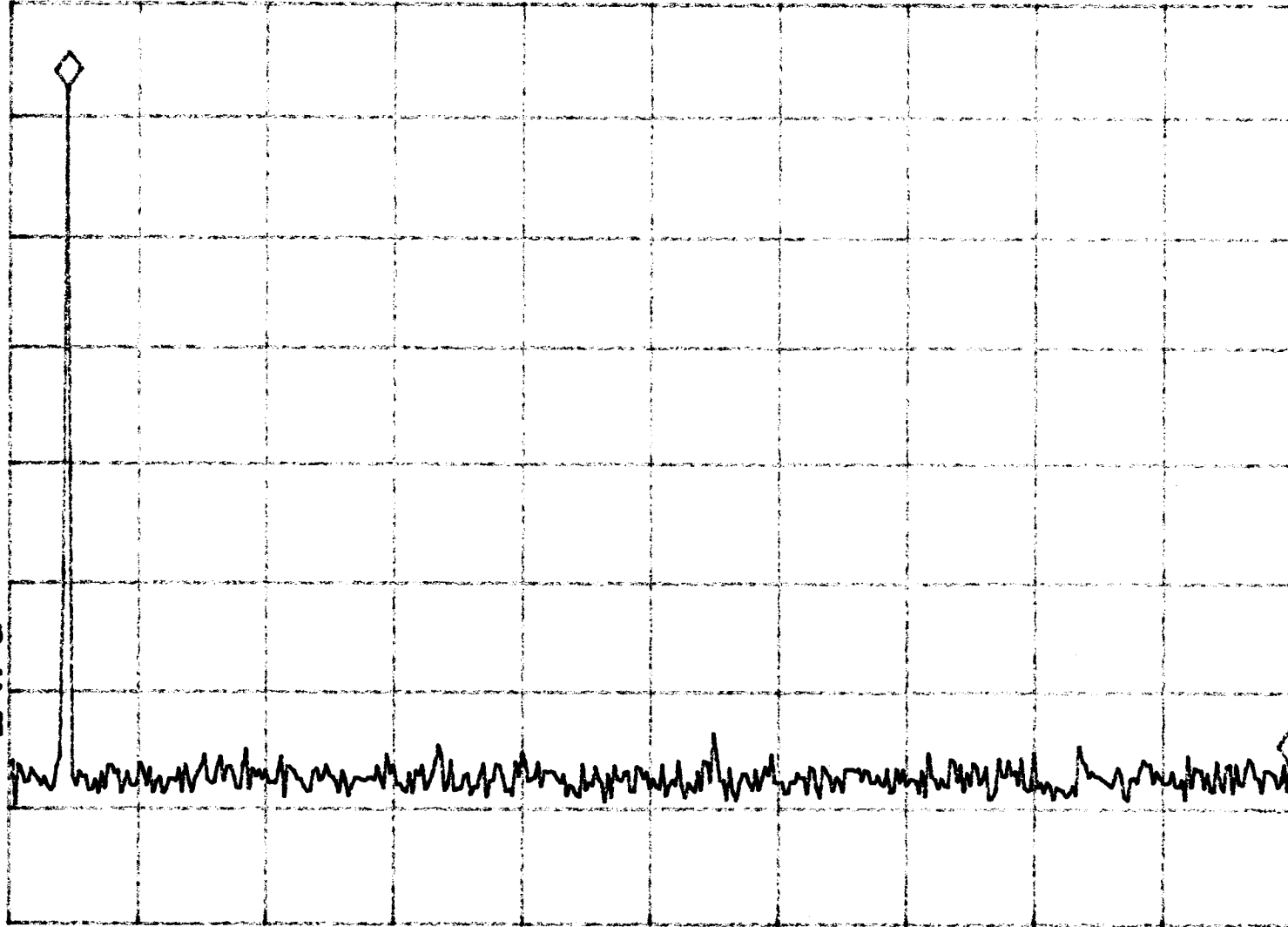
REF 107.0 dB μ V

#AT 30 dB

-58.49 dB

PEAK
LOG
10
dB/

VA SB
SC FC
CORR



START 902.00 MHz

#RES BW 10 KHZ

STOP 926.00 MHz

#VBW 3 MHz

SWP 780 msec

HP

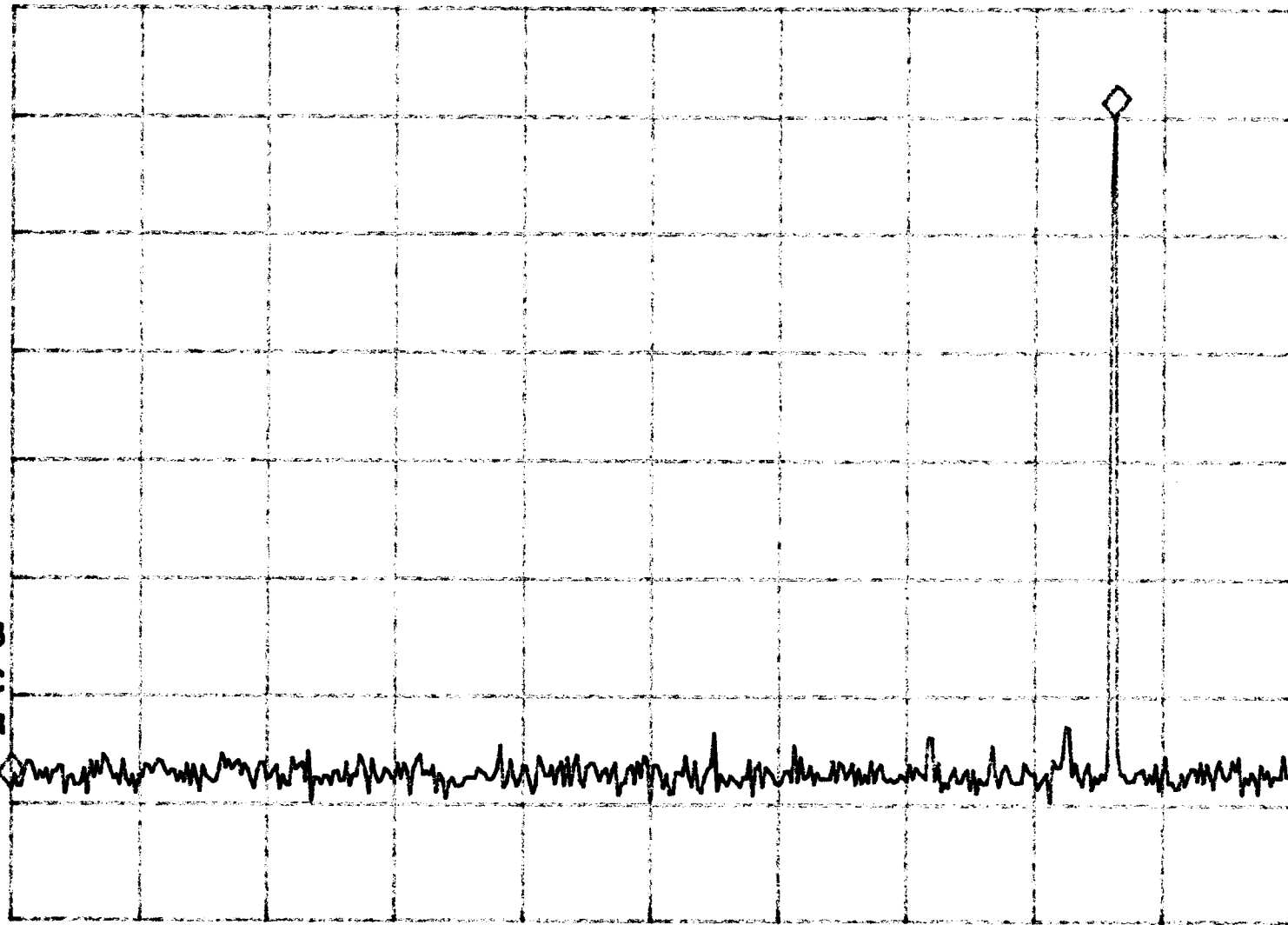
Handset Channel 1

MKR -24.15 MHz
-58.62 dB

REF 108.0 dB μ V #AT 30 dB

PEAK
LOG
10
dB/

VA SB
SC FC
CORR



START 902.00 MHz
#RES BW 10 KHz

#VBW 3 MHz

STOP 930.00 MHz
SWP 840 msec

hp

Handset Channel 40

MKR 890 kHz

REF 108.0 dB μ V

Δ T 30 dB

-64.79 dB

PEAK

LOG

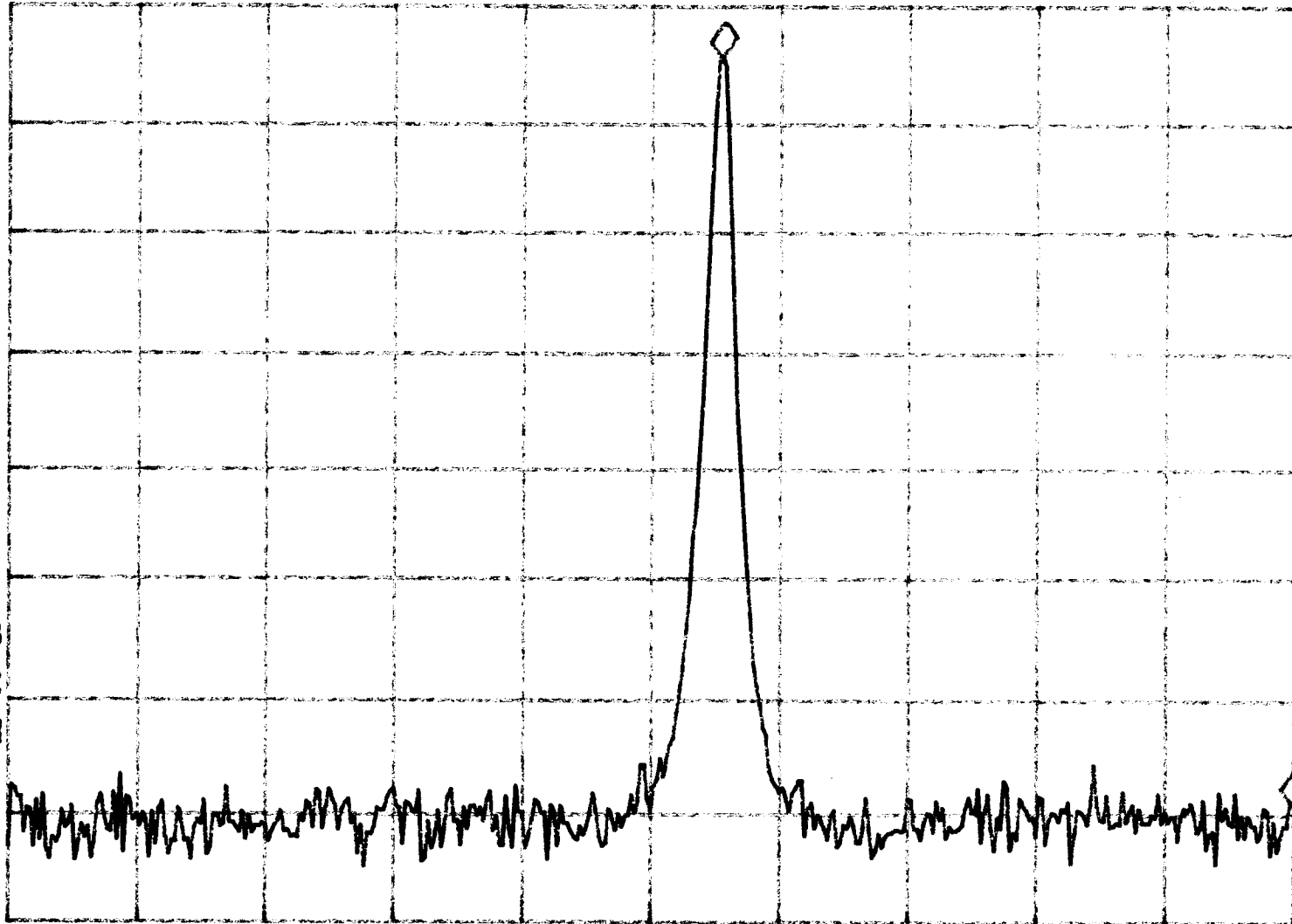
10

dB/

VA SB

SC FC

CORR



START 926.000 MHz

#RES BW 10 kHz

STOP 928.000 MHz

#VBW 3 MHz

SWP 60.0 msec