

J600

330 1765

DR73  
2R2  
41CD12

XG  
COM

FL200

U200

FL201

U302

U301

Pb S/N 005

2015HV-0 31  
SM 2014  
M1 212444-01

ELF-6706  
Rev.A

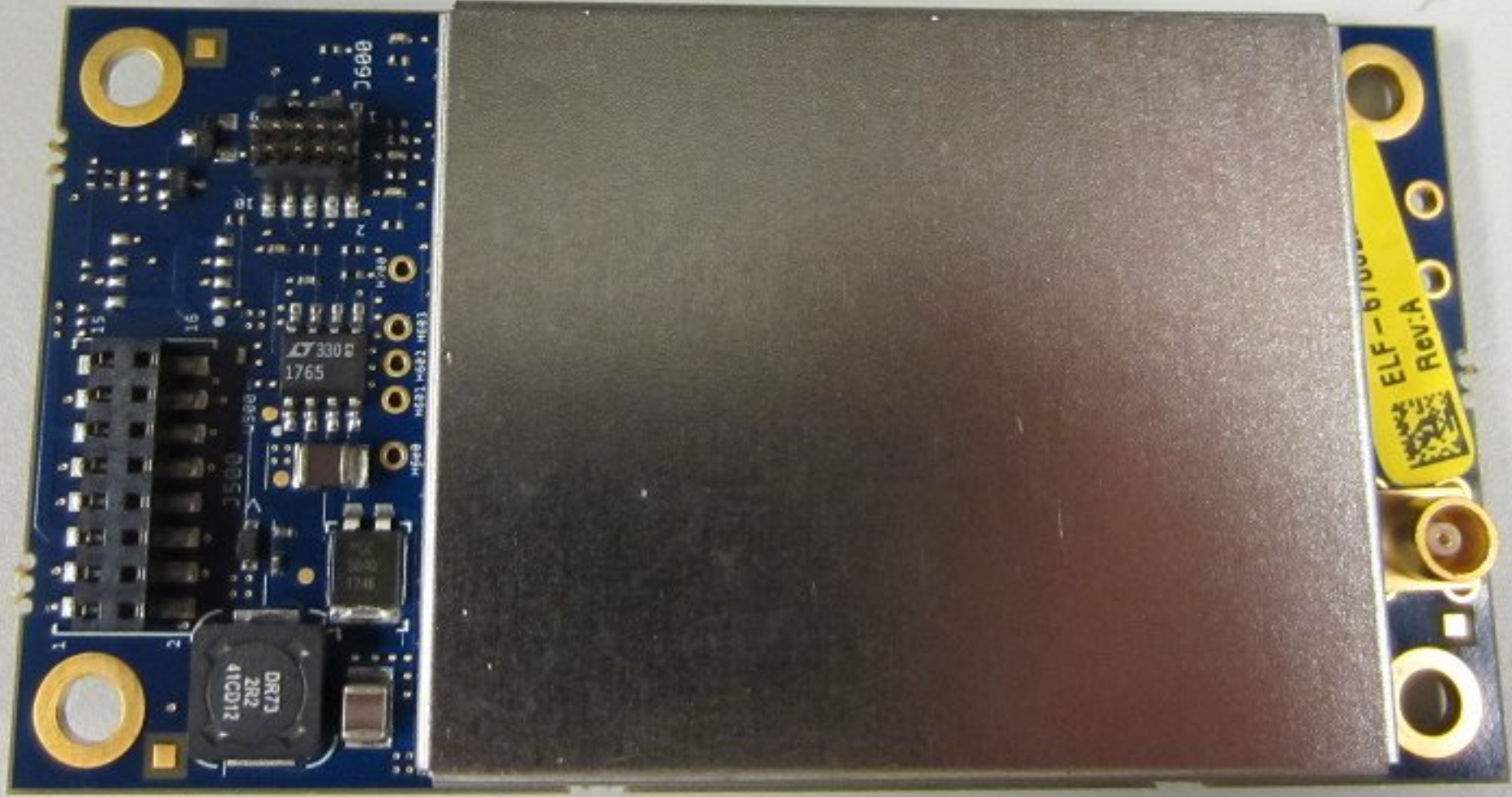




2563791 895122

3108A14  
M30F248T  
REV D

03-3108A07  
1.0.1  
041014



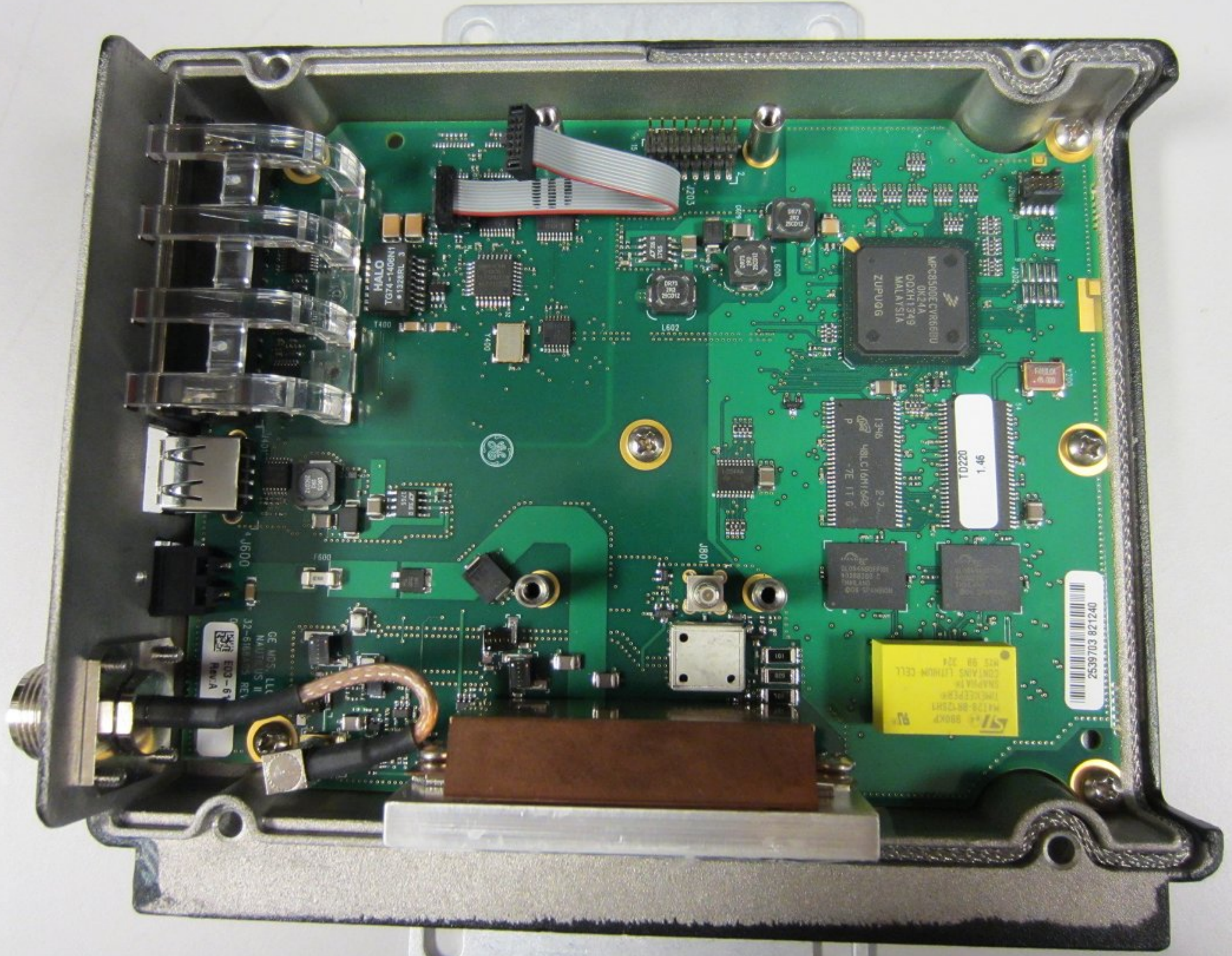
0891C

330

1765

DR73  
2R2  
41C012

ELF-6100  
Rev.A



HALO  
TG74-1406N1  
#1328RL 3

MPC8500E CTR6680U  
0K24A  
00XN1349  
MALAYSIA  
ZUPU0G

10220  
1-46

1346  
H8LC16M1602  
-7E IT 0

SLI 3007  
MILWAUKEE  
CONTAINS LITHIUM CELL  
DATE 08 2014

2539703 821240

GE IND. LLC  
NAUTICS II  
32-618103 REV  
E03-6  
REV. A







2563781 855122

1.48  
T0220

MPC8500E CYR60U  
0K21A  
00XH1E49  
MALAYSIA  
ZUPU0G

48LC16M1602  
P  
7E 1T 6

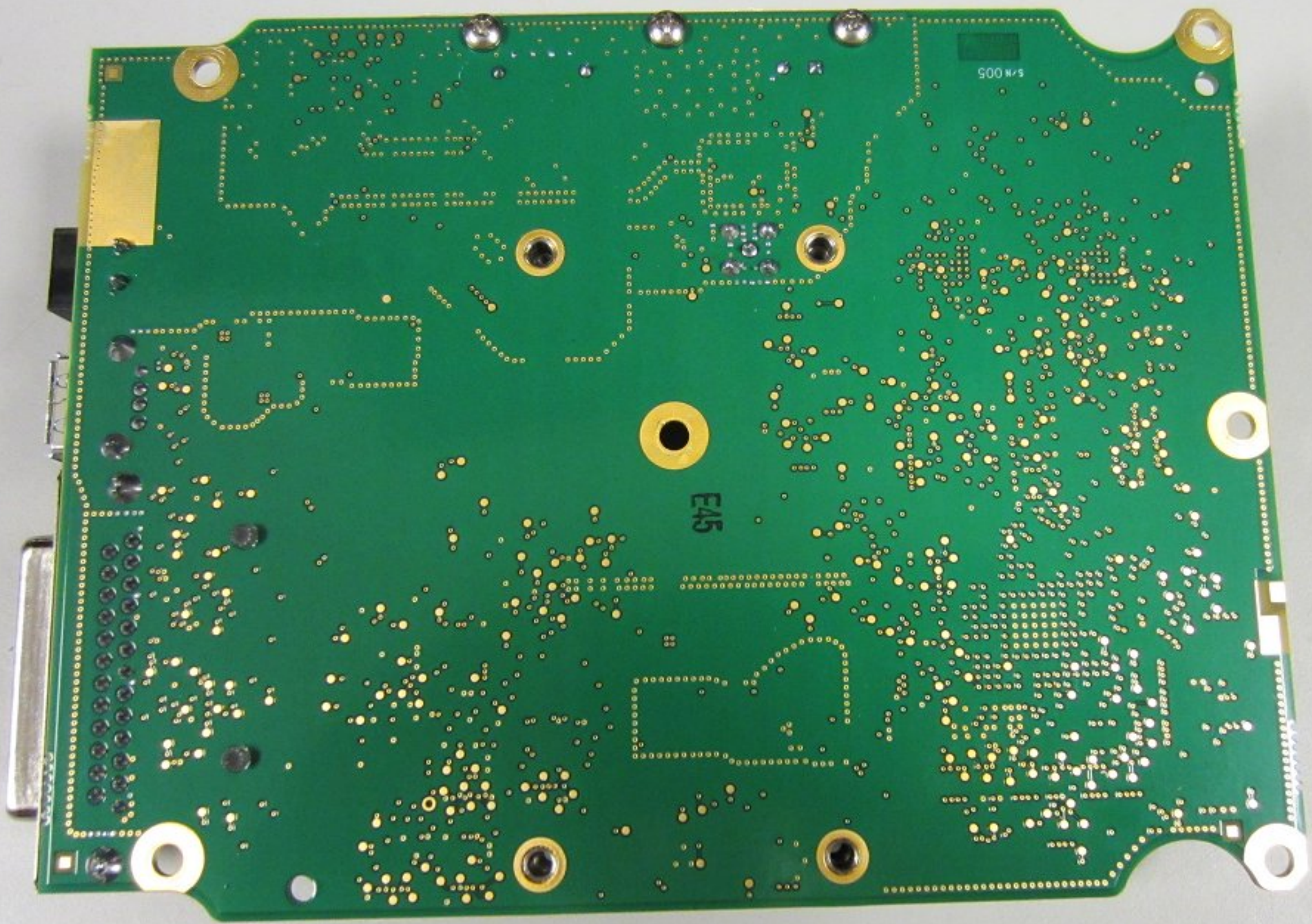
2563781 855122



HALO  
T074-1409N1  
\*1328RL 3  
33333333

GE MDS, LLC  
NAUTILUS II  
32-6168A05 REV L

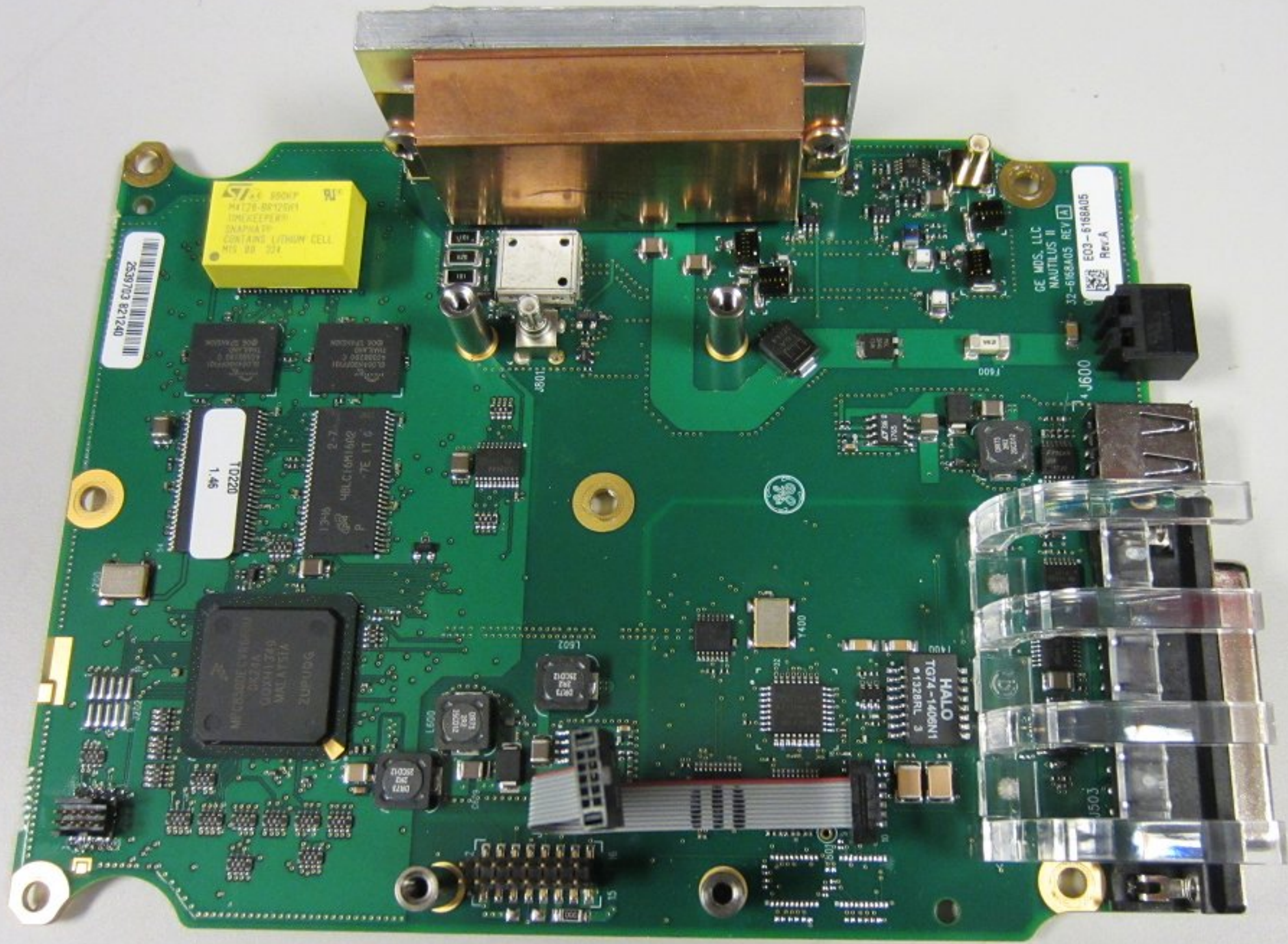
E03-6168  
Rev: A



500 M/S

E45





2539703 821240

574E 500UF  
MKT28-50V20W1  
SMXETPERP  
SMAPHA 01  
CONTAINS LIQUID CELL  
MIS 88 234

10220  
1.46

48LDC101602  
7-2  
TE IT 0  
P  
64-1

Q104042  
VLSI  
492L114740  
MILAYIA  
2004030

GE MDS, LLC  
NAUTILUS II  
32-61688A05 REV A  
E03-6168A05  
Rev A

HALO  
T074-1406N1  
#1928RL 3

J600

J503





RA30H2127M  
114AC-GB JAPAN



ST 990KP  
M478-BR12SH1  
TIMEKEEPER  
SNAPHAT  
CONTAINS LITHIUM CELL  
MYS 99 324



J801



FRANIGM  
GL064N90FF101  
40388280 C  
THAILAND  
@06 SPANSON



16A  
1244  
1246



1246



1765  
2316



ST 990KP  
M4T28-BR12SH1  
TIMEKEEPER  
SNAPFIT  
CONTAINS LITHIUM CELL  
MYS 99 324

101  
620  
101

RA3DH2127M  
114AC-GB JAPAN

108R

TD220  
1.46



GE MDS, LLC  
NAUTILUS II

F600

DR73  
182  
250D12