

# Router

## Tools & Accessories

### PR20EVSK

Variable Speed Palm Router

***"Sometimes a tool is so well designed that it sets the standard for its category. I think this Bosch Colt could become the trim router benchmark."***

*Woodworkers Journal  
Bosch PR20EVSK Colt  
Chris Marshall  
3/1/2007*



## Section Guide

### Tools

Palm Routers .....	106-107
Fixed Base Routers .....	107-108
Plunge Routers .....	108-109

### Accessories

Palm Routers .....	110
Medium/Large Routers .....	111
Tables/Table Accessories .....	112
Template Guides.....	114-115
Router Bits .....	116-138



# BOSCH



The Colt Palm Routers are the first small routers to offer power, precision, versatility and comfort. They are perfect for many routing tasks, including rounding off deck planks and railings, creating decorative edges, cutting slots and grooves, trimming laminates and cabinet face frames, making window cut-outs, routing decorative inlays and dovetails, and more.



**Round Off**  
Deck Planks & Rails



**Route**  
Hinge Mortises



**Trim**  
Hard-to-Reach Corners  
Using Tilt Base



**Scribe**  
Backsplashes Using  
Offset Base

## PR10E

Colt™ Single-Speed Electronic Palm Router

## PR20EVSK

Colt™ Variable-Speed Palm Router Kit (shown)



Carrying Case  
Included

## Features

- Great for rounding-over deck planks and railings, hinge mortising, decorative edge forming, slot cutting, dovetailing, window cutouts, decorative inlays, laminate trimming and more.
- 1.0 HP (Max. Tool Output) - 5.6 Amp Motor, 35,000 RPM
- Rugged Aluminum Fixed Base - Durable, solid and precise
- Fast & Precise Depth Adjustment System - Allows both macro and micro adjustment
- Unique Finger Support Pockets - For additional stability, especially when trimming edges
- Enhanced Bit Capacity - Fixed Base accepts bits up to 1-5/16" in diameter
- Soft-start - Reduces start-up torque
- Constant Response™ Circuitry - Monitors and maintains speed under load for consistent performance and provides overload protection
- Quick-clamp System - Allows motor to be easily adjusted or moved from base to base
- Angled cord exit - Helps keep cord out of the way
- Palm-grip design - The most comfortable router in its class.

### PR20EVSK also features

- 1.0 HP (Max. Tool Output) - 5.6 Amp Motor, 16,000-35,000 RPM
- Palm-grip design with Soft-Grip- The most comfortable router in its class.
- Variable-speed dial - For matching speed to workpiece and task
- Straight Edge Guide - Guides router along edges of workpiece or up to 3-5/8" from edge
- Rugged carrying case

## Specifications

	PR10E	PR20EVSK
Amperage	5.6	5.6
Max. Tool HP	1	1
Collet Capacity	1/4"	1/4"
No Load RPM	35,000	16,000 - 35,000
Base Opening	1-9/16"	1-9/16"
Weight (lbs.)	3.2	3.3

### PR10E Includes

Motor	PR10E
Fixed Base	PR001
1/4" Self-Releasing Collet	2 609 160 084
Drop-forged Wrench	2 609 110 438

### PR20EVSK Includes

Motor	PR20EVS
Fixed Base	PR001
1/4" Self-Releasing Collet	2 609 160 084
Straight Edge Guide	PR002
Drop-Forged Wrench	2 609 110 438
Carrying Case	Included



See pages 110, 114, 116-138 for  
router accessories.

# Fixed Base Routers

## Specifications

Amperage	5.6
Max. Tool HP	1 HP
Collet Capacity	1/4"
No Load RPM	16,000 - 35,000
Weight (lbs.)	3.3

## Includes

PR20EVS Motor	
Fixed Base	PR001
1/4" Self-Releasing Collet (2)	2 609 160 084
Drop-Forged Wrench	2 609 110 438
Straight Edge Guide	PR002
Roller Guide	PR003
Offset Base with Roller Guide	PR004
Tilt Base	PR005
Underscribe Plate with Wrenches	PR006
Carrying Case	Included

 See pages 110, 114, 116-138 for router accessories.

## Features

- Great for rounding-over deck planks and railings, hinge mortising, decorative edge forming, slot cutting, dovetailing, window cutouts, decorative inlays, laminate trimming and more.
- Rugged Aluminum Fixed Base - Durable, solid and precise
- Fast & Precise Depth Adjustment System - Allows both macro and micro adjustment
- Unique Finger Support Pockets - For additional stability, especially when trimming edges
- Enhanced Bit Capacity - Fixed Base accepts bits up to 1-5/16" in diameter
- Soft-start - Reduces start-up torque
- Constant Response™ Circuitry - Monitors and maintains speed under load for consistent performance and provides overload protection
- Quick-clamp System - Allows motor to be easily adjusted or moved from base to base
- Angled cord exit - Helps keep cord out of the way
- Palm-grip design with Soft Grip - The most comfortable router in its class.
- Offset Base with Spindle Lock - Allows routing near vertical surfaces, such as when trimming laminate applied to top of countertop backsplash
- Tilt Base with Detents at Key Angles - Allows routing at special angles and in hard-to-reach areas
- Underscribe Attachment - Mounts to fixed base for creating precise seams between sheets of laminates
- Straight Edge Guide - Guides router along edges of workpiece or up to 3-5/8" from edge
- Roller Guide - Guides router when non-bearing bit or unpiloted bit is used
- Rugged carrying case

## PR20EVSNK

Colt™ Variable-Speed Electronic Palm Router Installer's Kit



## Specifications

	1617	1617EVS
Rating	120V AC	120V AC
Amperage	11	12
Max. Motor HP	2	2.25
Collet Capacity	1/4", 3/8", 1/2", 8mm	1/4", 3/8", 1/2", 8mm
No Load RPM	25,000	8,000 - 25,000
Base		
Opening (in.)	3-3/4"	3-3/4"
Diameter (in.)	6"	6"
Cord Length (ft.)	10	10
Weight (lbs.)	8.1	8.3

## Includes

1/4" S. R. Collet Chuck	2 610 906 283
1/2" S. R. Collet Chuck	2 610 906 284
16mm Shaft Wrench	2 610 991 388
24mm Collet Nut Wrench	2 610 992 417
Chip Shield	2 610 991 389
Tool-Free Templet	
Guide Adapter	2 610 991 370

## Optional Equipment

3/8" S. R. Collet Chuck	2 610 906 287
8mm S. R. Collet Chuck	3 607 000 645
Carrying Case	2 610 996 005

 See pages 111-138 for router accessories.

## Features

- Macro and microfine bit depth adjustment system with resettable depth indicator - For fast, precise depth adjustment
- Quick-clamp System - Allows motor to be easily adjusted or moved from base to base
- Precision Centering Design - Makes it easy to keep bit on intended outline when using jigs, templates, dovetail fixtures and similar guidance devices
- Large 3-3/4" base opening plus 2" subbase opening - Accepts large bits
- Tool-free templet guide adapter - For fast and easy RA-Series templet guide changes
- Right or left switch location - For user preference and consistency (motor does not rotate during depth adjustment)
- One-piece armature shaft - For accuracy and long bit shank capacity
- Classic hardwood handles - For comfort and beauty
- Now includes RA1161 Fixed-Base with system for adjusting bit height from above a router table!
- T-Handle Adjustment Wrench sold separately
- Base has threaded holes for mounting to router table positioned in Bosch 4-hole pattern and common 3-hole pattern.
- Dust-sealed power switch

## 1617EVS also features

- Variable speed dial - For matching speed to workpiece and task
- Constant Response™ Circuitry - Maintains constant speed under load, provides overload protection
- Soft-start - Reduces start-up torque
- T-Handle Hex Above-Table Depth Adjustment Wrench — 2610923193

## 1617

2 HP Fixed-Base Router

## 1617EVS

2.25 HP Fixed-Base Electronic Router (shown)



## 1618EVS

2.25 HP Fixed-Base Electronic  
D-Handle Router



### Features

- Comfortable D-handle design with reversible auxiliary handle
- Quick-clamp System - Allows motor to be easily adjusted or moved from base to base
- Macro and microfine bit depth adjustment system with resettable depth indicator - For fast, precise depth adjustment
- Precision Centering Design - Makes it easy to keep bit on intended outline when using jigs, templates, dovetail fixtures and similar guidance devices
- Large 3-3/4" base opening plus 2" subbase opening - Accepts large bits
- Tool-free templet guide adapter - For fast and easy RA-Series templet guide changes
- One-piece armature shaft - For accuracy and long bit shank capacity
- Variable speed dial - For matching speed to workpiece and task
- Soft-start - Reduces start-up torque
- Constant Response™ Circuitry - Maintains constant speed under load, provides overload protection

### Specifications

Rating	120V AC
Amperage	12
Max. Motor HP	2.25
Collet Capacity	1/4", 3/8", 1/2", 8mm
No Load RPM	25,000
Base	
Opening (in.)	3-3/4"
Diameter (in.)	6"
Cord Length (ft.)	10
Weight (lbs.)	8.6

### Includes

1/4" Self-Releasing Collet Chuck.....	2 610 906 283
1/2" Self-Releasing Collet Chuck.....	2 610 906 284
16mm Shaft Wrench.....	2 610 991 388
24mm Collet Nut Wrench.....	2 610 992 417
Chip Shield.....	2 610 991 389
Tool-Free Templet Guide Adapter.....	2 610 991 370

### Optional Equipment

3/8" S. R. Collet Chuck .....	2 610 906 287
8mm S. R. Collet Chuck.....	3 607 000 645
Carrying Case .....	2 610 996 005



## 1617PK

2 HP Combination Plunge  
& Fixed-Base Router Pack

### 1617EVSPK

2.25 HP Combination Plunge & Fixed-Base  
Router Pack (shown)



Carrying Case  
Included

### Features

- Precision Centering Design - Makes it easy to keep bit on intended outline when using jigs, templates, dovetail fixtures and similar guidance devices
- Microfine bit depth adjustment system on both bases - For fast, precise bit depth adjustment
- Quick clamp system on both bases for fast tool-free conversion - Move motor from base to base with ease
- Wide base openings and 2" subbase openings - Accepts larger bits and provides better visibility
- Tool-free templet guide adapter - For fast and easy RA-Series templet guide changes
- Right or left switch location - For user preference and consistency (motor does not rotate during depth adjustment)
- Now includes RA1161 Fixed-Base with system for adjusting bit height from above a router table!
- Fixed base has threaded holes for mounting to router table positioned in Bosch 4-hole pattern and common 3-hole pattern
- Plunge base has contoured soft grip handles - For enhanced control and support at all plunge depths
- Rugged carrying case has compartments for all included items
- Dust-sealed power switch

### 1617EVSPK also features

- Variable speed dial - For matching speed to workpiece and task
- Soft-start - Reduces start-up torque
- Constant-Response™ Circuitry - Maintains constant speed under load, provides overload protection

### Specifications

	1617PK	1617EVSPK
Amperage	11	12
Max. Motor HP	2	2.25
Collet Capacity	1/4", 3/8", 1/2", 8mm	1/4", 3/8", 1/2", 8mm
No Load RPM	25,000	8,000 - 25,000
Base Diameter		
Fixed (in.)	6"	6"
Plunge (in.)	6-11/16"	6-11/16"
Cord Length (ft.)	10	10
Weight (lbs.)		
Fixed Base	8.1	8.3
Plunge Base	9.8	10

### Includes

1617PK.....	16171 Motor
1617EVSPK .....	16176 Motor
Plunge Base .....	RA1166
Fixed Base .....	RA1161
1/4" Self-Releasing Collet Chuck.....	2 610 906 283
1/2" Self-Releasing Collet Chuck.....	2 610 906 284
16mm Shaft Wrench.....	2 610 991 388
24mm Collet Nut Wrench.....	2 610 992 417
Tool-Free Templet Guide Adapter.....	2 610 991 370
Fixed Base Chip Shield .....	2 610 991 389
T-Handle Hex Height Adjustment Wrench.....	2 610 923 193
Plunge Base Chip Shield.....	2 610 912 599
Carrying Case .....	2 610 913 367

### Optional Equipment

3/8" S. R. Collet Chuck .....	2 610 906 287
8mm S. R. Collet Chuck.....	3 607 000 645





## Specifications

Rating	120V AC
Amperage	12
Max. Tool HP	2.25
Collet Capacity	1/4", 1/2", 3/8", 8mm
Plunge Depth (in.)	2-1/4"
No Load RPM	11,000-22,000
Base Opening (in.)	3-5/16"
Base Diameter (in.)	6-11/16"
Cord Length (ft.)	10'
Weight (lbs.)	9.7

## Includes

1/4" S. R. Collet Chuck	2 610 906 283
1/2" S. R. Collet Chuck	2 610 906 284
24mm Collet Nut Wrench	2 610 992 417
Tool-Free Templet	
Guide Adapter	2 610 991 370
Chip Shield	2 610 912 599
Dust Extraction Hood	2 608 190 038
Vacuum Hose Adapter	VAC002

## Optional Equipment

Carrying Case	2 610 996 957
---------------	---------------



See pages 111-138 for  
router accessories.

## Features

- Bosch-exclusive Afterlock™ Microfine Bit Depth Adjustment System for fast, microfine depth adjustment at any locked plunge position
- Depth Rod and Adjustable Turret System for easily-repeatable plunge routing applications
- Smooth Plunge Action and Springed Plunge Lock Lever
- 3-5/16" base opening and 2" subbase opening accepts large bits
- Variable Speed Dial - For matching speed to workpiece and task - 11,000-22,000 RPM
- Soft-start - Reduces start-up torque
- Constant-Response™ Circuitry - Monitors and maintains constant speed under load for consistent performance
- Precision Center Design - Makes it easy to keep bit on intended cut line when using jigs, templates, dovetail fixtures and similar guidance devices
- Tool-Free Templet Guide Adapter - For fast and easy RA-Series templet guide changes
- Trigger Switch with Lock-On Button
- Convenient Front Spindle Lock for fast, easy one-wrench bit changes

## 1613AEVS

2.25 HP Electronic Plunge Router



## Specifications

Rating	120V AC
Amperage	15
Max. Tool HP	3.25
Collet Capacity	1/4", 1/2", 3/8", 8mm
Plunge Depth (in.)	2-9/16"
No Load RPM	8,000-21,000
Base Opening (in.)	3-3/4"
Base Diameter (in.)	7-1/2"
Cord Length (ft.)	8 ft.
Weight (lbs.)	13.2

## Includes

1/4" Self-Releasing Collet Chuck	2 610 906 283
1/2" Self-Releasing Collet Chuck	2 610 906 284
24mm Collet Nut Wrench	2 610 992 417
Tool-Free Templet	
Guide Adapter	2 610 991 370
Fine Adjustment Control	
Extension	2 610 907 529
Dust Extraction Hood	2 608 190 039
Vacuum Hose Adapter	VAC002

## Optional Equipment

3/8" S. R. Collet Chuck	2 610 906 287
8mm S. R. Collet Chuck	3 607 000 645



See pages 111-138 for  
router accessories.

## Features

- The most versatile and precise router above and below the table
- Converts easily for use with router table and back to upright use
- Bosch-exclusive system defeats both plunge lock and plunge springs - For effortless depth adjustments in router table
- 3-3/4" base opening and 2" subbase opening - Accepts large bits
- Macro and microfine adjustment knobs plus depth rod and turret - Versatile, precise depth adjustment
- Variable speed dial - For matching speed to workpiece and task 8,000 - 21,000 RPM
- Soft-start - Reduces start-up torque
- Constant-Response™ Circuitry - Maintains constant speed under load
- Precision Centering Design - Makes it easy to keep bit on intended outline when using jigs, templates, dovetail fixtures and similar guidance devices
- Tool-free templet guide adapter system - For fast and easy RA-Series templet guide changes
- Trigger switch with Lock-On Button
- Convenient front spindle lock - For fast, easy bit changes
- Dual-bearing plunge post - For smooth and accurate plunging action

## 1619EVS

3.25 HP Electronic Plunge Router



## The Most Versatile and Precise Router

### Above and Below the Table!

Feature for feature, the 1619EVS is the answer to all woodworkers' needs — versatility, precision, power, and more... setting it apart from the rest.



All the versatility and precision, plus... all the power and control you need for the largest or smallest of bits.



Exclusive plunge defeat system easily defeats both plunge lock and plunge springs for effortless under-table depth adjustments.

## Palm Routers

### 01J "J" Roller for Palm Router

- Designed especially for laminate installers.
- The aluminum handle is designed to place the necessary pressure over the roller, with minimum effort.
- The solid non-marking roller is recessed on the end for rolling near walls or backsplashes.
- 1-1/2" Dia. x 3" W x 14" L



### PR002 Straight Edge Guide for Palm Router

- Guides router along edges of workpiece or to up to 3-5/8" in from edge
- Includes mounting hardware



### PR004 Offset Base with Roller Guide for Palm Router

- Offset Base with Spindle Lock - Allows routing near vertical surfaces, such as when trimming laminate applied to top of countertop backsplash
- Quick-Clamp System - Allows motor to be easily adjusted or moved from base to base
- Spindle lock - For easy bit changes
- Durable aluminum and steel construction
- Includes Base Cover, Phenolic Subbase, 1/4" Self-Releasing Collet, Drive Gear, Special roller guide for PR004 and Comfortable Forged Wrench



### PR006 Underscribe Plate with Wrenches for Palm Router

- Underscribe Attachment - Mounts to fixed base for creating precise seams between sheets of laminates
- Easy front-to-back adjustment
- Shield at bottom of bit recess prevents bit from hitting guiding piece of laminate
- Includes Guide Plate, Adjustment Cam, Adjusting Tool, Wrench, Hardware



### PR008 Base Cover for Palm Router

- Provides extra insulation from heat in heavy-use situations



### PR010 Palm Router Subbase for use with Threaded Templet Guides

- Accepts threaded templet guides (not included)
- Precision Centering Design allows accurate positioning of bit within subbase and templet guides - Makes it easy to follow intended cut line when using jigs, templates, dovetail fixtures and similar guidance devices
- Smooth, long-wearing phenolic construction
- Includes mounting screws



### PR001 Fixed Base for Palm Router

- Quick-Clamp System - Allows motor to be easily adjusted or moved from base to base
- Enhanced Bit Capacity - Fixed Base accepts bits up to 1-5/16" in diameter
- Finger Support Pockets - For additional stability, especially when trimming edges
- Includes Phenolic Subbase



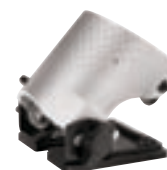
### PR003 Roller Guide for Palm Router

- Guides router when non-bearing bit or unpiloted bit is used
- Includes mounting hardware



### PR005 Tilt Base for Palm Router

- Tilt Base with Detents at Key Angles - Allows routing at special angles and in hard-to-reach areas
- Quick-Clamp System - Allows motor to be easily adjusted or moved from base to base
- Tool-Less Tilt Adjustment Range of 70° - 30° to 45°
- Detents every 7.5° - For easy setting of common angles
- Fast & Precise Depth Adjustment System
- Durable aluminum and steel construction
- Includes Phenolic Subbase



### PR007 Side-Handle Subbase with Dust Extraction Port

- Side Handle - Provides additional gripping location for support of router
- Includes vacuum hose port and dust extraction hood for user when edge-forming
- Accepts Bosch VAC005-VAC008 and VAC021 Vacuum Hose or standard 1-1/4" & 1-1/2" hoses
- Can be used with PR006 Underscribe Attachment for creating precision seams between two sheets of laminates. Connection to dust extraction system provides excellent means to prevent chips from getting under laminate sheets and into glue.
- Not for use with templet guides
- Includes Offset Subbase with Side Handle, Hose Port, Dust Collection Hood for use when edge-forming. Two sets of attachment screws, Mounting Screws, VAC002 Vacuum Hoses Adapter



### PR009 Palm Router Subbase for use with Bosch RA-Series Templet Guides

- Accepts Bosch RA-Series templet guides (not included)
- Precision Centering Design allows accurate positioning of bit within subbase and templet guides - Makes it easy to follow intended cut line when using jigs, templates, dovetail fixtures and similar guidance devices
- Smooth, long-wearing phenolic construction
- Includes mounting hardware



## Medium and Large Routers

### RA1161 Fixed Base

- Macro and microfine adjustment system with resettable depth indicator - For fast, precise bit depth adjustment
- Large 3-3/4" base opening & 2" subbase opening - Accepts larger bits, and provides better viewing visibility
- Precision Centering Design - Makes it easy to keep bit on intended outline when using jigs, templates, dovetail fixtures and similar guidance devices
- Same router table features as RA1165
- Includes chip shield, table mounting hardware and adjustment wrench
- For use with 1617-18 Series Router Motors



### RA1165 Router Table Base

- Designed for router table usage
- Wrench access from above table for convenient depth adjustment
- Wide 3-3/4" base opening allows for use of large bits
- Tool-free base change - Quick clamp system allows motor to be moved with ease
- Base is predrilled and tapped for Bosch 4-hole mounting pattern, plus industry-standard 3-hole mounting pattern
- Includes mounting hardware, adjustment wrench and chip shield
- For use with 1617-18 Series Router Motors



### RA1002 Fine Adjustment Control Extension

- Makes turning microfine depth adjustment extra easy, especially when router is mounted in router table



### RA1100 Threaded Templet Guide Adapter

- For use with Bosch routers with tool-free templet guide adapter system and with PR009 palm router optional subbase
- Allows use of Porter-Cable or any similar threaded templet guides



### RA1150 Templet Guide Centering Cone

- For precise centering of templet guides and attached subbases
- For use with all Bosch routers that have Precision Centering Design including palm routers



### RA1162 D-Handle Fixed Base

- Macro and microfine adjustment system with resettable depth indicator - For fast, precise bit depth adjustment
- Large 3-3/4" base opening & 2" subbase opening - Accepts larger bits, and provides better viewing visibility
- Precision Centering Design - Makes it easy to keep bit on intended outline when using jigs, templates, dovetail fixtures and similar guidance devices
- Includes chip shield
- For use with 1618 Series Router Motors



### RA1166 Plunge Base

- Fine adjustment on depth rod - For fast, accurate bit depth setting
- Wide 3-5/16" base opening & 2" subbase opening - Accepts larger bits and provides better viewing visibility
- Precision Centering Design - Makes it easy to keep bit on intended outline when using jigs, templates, dovetail fixtures and similar guidance devices
- Contoured soft grip handles - Provides enhanced control and comfort
- Plunge release lever - Conveniently located to allow maximum control
- Plunge depth of 2-15/16"
- For use with 1617-18 Series Router Motors



### RA1054 Deluxe Router Guide

- Precision fine adjustment control
- Guides cut along the workpiece or up to 8" in from edge
- Easily converts into circle guide for making arcs and circles up to 32" in diameter
- Includes pivot plate, dust extraction hood, vacuum hose adapter & attachment hardware
- Fits models 1613, 1617, 1618, 1619 Series routers and bases



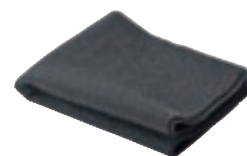
### RA1110 Bosch Threaded Templet Guide Adapter

- For use with older Bosch routers that use the Bosch "standard style" templet guide adapter system
- Allows use of Porter-Cable, or any similar threaded templet guides



### MAT001 24" x 36" Workmat

- 24" x 36" anti-slip mat; allows many routing, sanding and planing applications to be done without clamps



## Router Tables

### RA1171

#### Benchtop Router Table



#### Features

- Smooth laminated top for precision woodworking with 25" x 15-1/2" work surface
- 4-7/8" x 25-1/8" aluminum fence with adjustable MDF face plates. Outfeed can be offset for jointing
- Rigid aluminum router mounting plate pre-drilled for a wide variety of routers
- Starter pin and guard included. Offers support for routing curved work pieces
- Dust ports on fence and in cabinet fit standard 2-1/2" vacuum hoses
- 2 adjustable featherboards mount on fence or table to guide work
- Dual outlet switch with 6' power cord. Lock helps prevent unauthorized use

#### Specifications

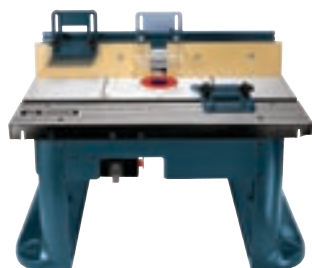
Height (in.)	14-1/2"
Depth (in.)	15-7/8"
Width (in.)	25-1/2"
Max. Fence Opening (in.)	3-3/16"
Max. Throat Opening (in.)	3-5/8"
Cord Length (ft.)	6'

#### Includes

Adjustable Featherboards (2) ..... 2 610 927 685  
 Mounting Plate Insert Rings to adjust  
   opening bit size (3) ..... 2 610 915 125  
 Adjustable Clear Guard ..... 2 610 927 687  
 Starter Pin ..... 2 610 927 738  
 Starter Pin Guard ..... 2 610 915 134  
 Outfeed Fence  
   Shims - 1/16" thick (2) ..... 2 610 927 690  
 Hardware for Mounting Routers

### RA1181

#### Benchtop Router Table



#### Features

- Large precision machined 27" x 18" aluminum work surface
- 4-7/8" x 25-1/8" aluminum fence with adjustable MDF face plates. Outfeed can be offset for jointing
- Rigid aluminum router mounting plate pre-drilled for a wide variety of routers
- Starter pin and guard included. Offers support for routing curved work pieces
- Dust collection port on fence fits standard 2-1/2" vacuum hoses
- 2 adjustable featherboards mount on fence or table to guide work
- Dual outlet switch with 6' power cord. Lock helps prevent unauthorized use

#### Specifications

Height (in.)	14-1/2"
Depth (in.)	18"
Width (in.)	27"
Max. Fence Opening (in.)	3-3/16"
Max. Throat Opening (in.)	3-5/8"
Cord Length (ft.)	6'

#### Includes

Adjustable Featherboards (2) ..... 2 610 927 685  
 Mounting Plate Insert Rings to adjust  
   opening bit size (3) ..... 2 610 915 125  
 Adjustable Clear Guard ..... 2 610 927 687  
 Starter Pin ..... 2 610 927 738  
 Starter Pin Guard ..... 2 610 915 134  
 Outfeed Fence  
   Shims - 1/16" thick (2) ..... 2 610 927 690  
 Hardware for Mounting Routers

### RA1200

#### Portable Router Table



#### Features

- Extra-large 44" x 24" x 1-1/4" laminated MDF work surface
- Precision machined 24" aluminum fence with adjustable wood faces and easy-to-grasp knobs
- No-flex phenolic router mounting plate with leveler; pre-drilled for a wide variety of routers
- Built-in table leveling for fast, tool-free set-up
- Easy access lockable on/off switch
- 2 adjustable featherboards to attach to fence and table, providing additional guidance and kickback protection
- Locking T-slot accepts 3/4" standard or T-slot accessories
- Dust collection port for standard 2-1/2" vacuum hoses
- Stands 36" high
- Locking steel legs fold to compact size
- Includes 6 metal shims for adjusting outfeed fence

#### Specifications

Height (in.)	36"
Depth (in.)	24"
Width (in.)	44"
Max. Fence Opening (in.)	4-1/4"
Max. Throat Opening (in.)	3-3/4"

#### Includes

Insert Rings (2), Start Pin,  
   and Auxiliary Guard ..... 2 610 915 902  
 Adjustable Featherboards ..... 2 610 907 916  
 Adjustable Clear Guard ..... 2 610 907 918  
 Hardware for Mounting Most Bosch Routers  
 Outfeed Fence Shims (6)

## Router Table Accessories

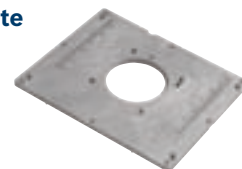
### RA1190 Router Table Floor Stand

- Converts RA1180 and RA1181 benchtop router tables into stationary router tables
- Includes 4 tool-free mounting knobs for attaching and removing benchtop table
- Brings RA1180 and RA1181 table height to 38-1/2"



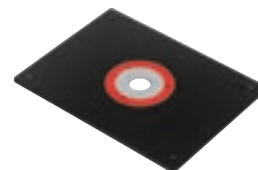
### RA1185 Router Table Mounting Plate

- Strong 3/8" thick plate
- Ready to be drilled to accept most routers (except D-handle models)
- Fits Router Table Models RA1171, RA1180, RA1181, RA1182



### RA1250 Mounting Plate

- For use with RA1200
- Strong thermoset 3/8" thick phenolic mounting plate
- Ready to be drilled to accept most routers (except D-handle models)
- Includes corner mounts and insert rings





## Edge Forming Dust Extraction Hood



- Hose port angle maximizes collection efficiency, keeps hose out of the way
- Includes one vacuum adapter for 35mm, 1-1/4" & 1-1/2" hoses

Single-Hood

**RA1170**

**RA1172AT**

**RA1173AT**

## 2-Hood Dust Extraction Kit



- With dust extraction hoods for edge forming & flat surface applications
- Consists of RA1170, plus hood for flat work surface applications with fixed-base

2-Hood Kit

## 3-Hood Dust Extraction Kit



- With dust extraction hoods for edge forming & flat surface applications
- Consists of RA1172, plus hood for flat surface applications with plunge base

3-Hood Kit

## MEDIUM & LARGE ROUTER ACCESSORY COMPATIBILITY

### Optional Router Equipment Compatibility

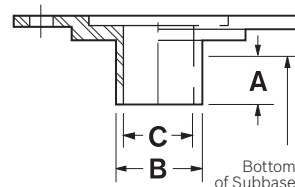
Router Item #	Current Models	RA1002 Adjustable Extension	RA1054 Router Guide	RA1100 Threaded Template Guide Interface	RA1150 Centering Cone	RA1160 Fixed Base	RA1162 D-Handle Base	RA1165 Under-table Base	RA1166 Plunge Base	RA1170 Dust Hood	RA1172AT Dust Hood Kit	RA1173AT Dust Hood Kit	RA1171/RA1181 RA1180/RA1182 Router Tables	RA1185 Mounting Plate	RA1190 Table Stand	RA1200 Router Table	RA1250 Mounting Plate
	<b>1613AEVS</b>		•	•	•					•			•	•		•	•
	<b>1617</b>	•	•	•	•	Included		*	•	•	•		•	•		•	•
	<b>1617EVS</b>	•	•	•	•	Included		*	•	•	•		•	•		•	•
	<b>1617PK</b>	FB	•	•	•	Included		*	Included	•	•	•	FB	FB		FB	FB
	<b>1617EVSPK</b>	FB	•	•	•	Included		*	Included	•	•	•	FB	FB		FB	FB
	<b>1618</b>	•	•	•	•	•	Included	*	•	•	•						
	<b>1618EVS</b>	•	•	•	•	•	Included	*	•	•	•						
	<b>1619EVS</b>	•	•	•	•					•			•	•		•	•
	<b>RA1171, RA1181</b>					•		*						•	•		
	<b>RA1200</b>					•		*									•
	<b>Previous Models</b>																
	<b>1601 – 1606 Series</b>		82995†	RA1110†						•							
	<b>1613 &amp; 1613EVS</b>		•	•						•			•	•		•	•
	<b>1614 Series</b>		RA1052†	•						•			Δ	•		□	•
	<b>1611 &amp; 1615 Series</b>	RA1001†	•	RA1110†									Δ	•		□	•

### Notes

- = Compatible
- \* = Only for use in router table with 1617/18 series router motors.
- FB = Compatible with fixed base only
- † = This model required rather than model listed at top of column.
- Δ = Requires RA1185 mounting plate
- = Requires RA1250 mounting plate

## Templet Guides


**Standard Style**

**RA-Style**

**Router Item #**

90085, 90150, 90300, 90303,  
1600, 1601, 1601A, 1602, 1602A,  
1603, 1604, 1604A, 1606, 1606A,  
1608, 1611\*, 1611EVS\*, 1615\*,  
1615EVS\*

1613, 1613AEVS, 1613EVS, 1614,  
1614EVS, 1617, 1617EVS, 1617PK,  
1617EVSPK, 1618, 1618EVS,  
1619EVS, PR10E, PR20EVS  
Note: Colt PR10 and PR20 Series Palm  
Routers require accessory subbase  
PR009 to accept templet guides

**A** = Distance templet guide tip  
extends from bottom of base  
**B** = Outside diameter templet  
guide tip  
**C** = Inside diameter templet  
guide tip  
Note: Cut diameter of router bit  
should be at least 1/16" less than  
dimension "C" on templet guide

Primary Application	Templet Guide Item #		Templet Guide Dimensions		
			A	B	C
General	<b>82859</b>	<b>RA1107</b>	5/16"	7/16"	3/8"
General	<b>82988</b>	<b>RA1109</b>	7/16"	1/2"	13/32"
General	<b>82860</b>	<b>RA1111</b>	3/16"	5/8"	17/32"
General	<b>82867</b>	<b>RA1115</b>	3/16"	3/4"	21/32"
General	<b>82850</b>	<b>RA1117</b>	31/64"	13/16"	5/8"
General	<b>82868</b>	N/A	27/64"	13/16"	5/8"
General	<b>82849</b>	<b>RA1119</b>	31/64"	1"	25/32"
Large dovetail	N/A	<b>RA1105</b>	9/64"	7/16"	3/8"
Radius hinge, 1/4"	<b>82864</b>	<b>RA1113</b>	1/2"	5/8"	17/32"
Radius hinge, 5/8"	<b>82869*</b>	<b>RA1121</b>	7/16"	1-3/8"	1-19/64"
Raised panel & general	<b>83019</b>	N/A	13/32"	7/8"	1-3/16"
Inlays (recess & insert)**	<b>82862**</b>	<b>RA1101**</b>	3/16"	5/16"	1/4"
Small dovetail	<b>82866</b>	<b>RA1103</b>	9/64"	5/16"	17/64"
7 pc. templet guide kit	N/A	<b>RA1125</b> includes RA1103, RA1105, RA1109, RA1113, RA1115 and RA1100 adapter for threaded templet guides			
Router inlay kit	N/A	<b>RA1127</b> includes RA1101 and 85982M router bit			

\* Adapter plate 3 605 700 511 required for models 1611, 1611EVS, 1615, 1615EVS (standard equipment).

\*\* Inlay templet guides: Use router bit 85982M or 85213M for inlaying wood veneers or inlaying replacement laminate on damaged countertops. Also see RA1127 router inlay kit.

NOTE: The following Bosch routers are recommended for these applications: 1613AEVS, 1617, 1617EVS, 1618 and 1618EVS.

† Not for use with trim router models 90085, 1608 and 1609.

## 83038 Deluxe Door and Jamb Hinge Templet Kit

- For metal or wood stops. Also for remodeling - New door in old mortised jamb
- Transfers directly from jamb to door (or vice-versa) with hinges on either side of door - No turning templet end over end
- No straight edges, measuring tools, or calculations required
- Works with or without the stops installed
- Includes the deluxe hinge template, metal case, one regular and one 3 601 321 516 extra long top gauge assembly and 85159 bit
- Templet guide required
- Use the competitive brand templet guide which matches the dimensions of the Bosch Templet Guide No. RA1113 as listed on page 114



## Jamb Gauge Blocks

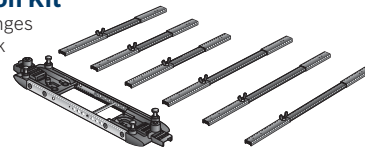
- Must be used when transferring hinge location from metal jambs to wood doors. Used with 83038 Deluxe Hinge Templet. Order three of a size for 3-hinge doors and four of a size for 4-hinge doors.

Item #	Hinge Size
83044	3"
83045	3-1/2"
83046	4"
83047	4-1/2"
83048	5"



## 83039 4-Hinge Conversion Kit

- Used when mortising for four hinges on 7'-9' doors. Includes three link rails for 7'-8' doors, three link rails for 8'-9' doors and one extra frame section
- Fits 83038 and 83003 kits



## 3 608 939 601 Corner Chisel

- Use when mortising where a square corner is required: lock faces, hinges, etc
- Die-cast aluminum body with hardened tool steel chisel



## Extra Templet Nails

Hinge Templet Item #	Nail Item #
83000, 83001, 83002, 83003 (12 pkg.)	83008
83037, 83038 (1 pkg.)	83018



## 83004 Extra-Long Link Rails

- Special link rails for use with 83002 & 83038 hinge templates when mortising 3-hinge, 8' door. (2 pcs.)



## ROUTER/HINGE MORTISING SPECIFICATIONS & WHERE USED

### To Route Hinge Mortises for Doors with these Requirements

Door Height	Number of Hinges	Door Hinge Thickness	Hinge Size
6' 6" to 7'	2 or 3	1-3/8" to 2-1/4"	2-1/2" to 5-1/2"
8'	3	1-3/8" to 2-1/4"	2-1/2" to 5-1/2"
7' to 9'	4	1-3/8" to 2-1/4"	2-1/4" to 5-1/2"

### For Door & Jamb Hinge Templet

For Wood Jambs Only	For Wood Use or Metal* Jambs	Use Extra Link Rails	Use Conversion Kit
83003 or 83038	83038	NA	NA
83003 or 83038	83038	83004	NA
83003 or 83038	83038	NA	83039

\*Metal jamb gauge blocks are required when working with metal jambs.

## TEMPLT GUIDES & ROUTER BITS NEEDED FOR HINGE ROUTING

When Using This Router	And Your Hinge Butt Has This Corner Radius	Use This Templet Guide
1601, 1601A, 1602, 1602A, 1603, 1604, 1604A, 1606, 1606A	1/4"	82864
1613, 1613EVS, 1613AEVS, 1614, 1614EVS, 1617, 1617EVS, 1618, 1618EVS, 1619EVS	1/4"	RA1113
1601, 1601A, 1602, 1602A, 1603	5/8"	82869
1604, 1604A, 1606, 1606A	5/8"	82869
1613, 1613EVS, 1613AEVS, 1614, 1614EVS, 1617, 1617EVS, 1618, 1618EVS, 1619EVS	5/8"	RA1121

When Using This Router	Use This Router Bit	Use This Cutter Head and Threaded Shank
1601, 1601A, 1602, 1602A, 1603, 1604, 1604A, 1606, 1606A	85159 or 85249M	NA
1613, 1613EVS, 1613AEVS, 1614, 1614EVS, 1617, 1617EVS, 1618, 1618EVS, 1619EVS	85159 or 85249M	NA
1601, 1601A, 1602, 1602A, 1603	NA	85238M and 92839
1604, 1604A, 1606, 1606A	NA	85238M and 92839 (1/4" Shank) or 85234M and 92840 (1/2" Shank)
1614, 1614EVS	NA	85238M and 92839
1613, 1613EVS, 1613AEVS, 1617, 1617EVS, 1618, 1618EVS, 1619EVS	NA	85238M and 92839 (1/4" Shank) or 85234M and 92840 (1/2" Shank)



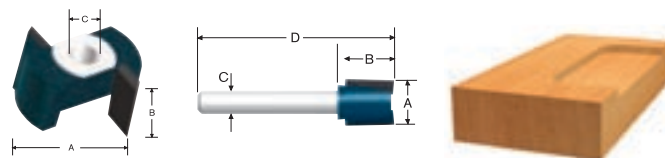
## Straight/Mortising Bits



### Carbide Tipped Hinge Mortising Bits

Micrograin bits cut fast for mortises when work is started at the edge and provide a smooth finish cut that is ideal for surfacing operations. Useful when good chip clearance is important, especially in gummy wood.

- 82816, 82817 and 82818 are shanks for use with 85234M
- 92839 and 92840 are shanks for use with 85238M

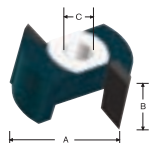


Item #	A. Overall Diameter	B. Cutting Edge Length	C. Shank Diameter	D. Overall Length	Thread
85158	7/16"	3/8"	1/4"	1-7/8"	N/A
85159	1/2"	13/32"	1/4"	2-1/4"	N/A
85249M	1/2"	3/4"	1/4"	2"	N/A
<b>NEW!</b> 85236M	5/8"	3/4"	1/4"	2"	N/A
85248M	3/4"	3/4"	1/4"	2"	N/A
85234M	1/2"	1/2"	N/A	N/A	1/4"-28
82816	N/A	N/A	1/4"	N/A	1/4"-28
82817	N/A	N/A	3/8"	N/A	1/4"-28
82818	N/A	N/A	1/2"	N/A	1/4"-28
85238M	1-1/4"	35/64"	N/A	N/A	5/16"-24
92839	N/A	N/A	1/4"	N/A	5/16"-24
92840	N/A	N/A	1/2"	N/A	5/16"-24

### Carbide Tipped Lock Mortising Bits

Micrograin bits that work with lock mortisers using 1/4" - 28 thread. Mount directly on the spindle shaft of Bosch item 1604LM or Porter Cable 513.

- 82816, 82817 and 82818 are shanks that allow lock mortising cutters to be used in portable routers

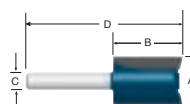


Item #	A. Overall Diameter	B. Cutting Edge Length	C. Shank Diameter	Thread	Description
85633M	15/16"	9/16"	N/A	1/4"-28	Cutter
85634M	3/4"	1/2"	N/A	1/4"-28	Cutter
85635M	1"	1/2"	N/A	1/4"-28	Cutter
85636M	1-1/4"	9/16"	N/A	1/4"-28	Cutter
82816	N/A	N/A	1/4"	1/4"-28	Arbor
82817	N/A	N/A	3/8"	1/4"-28	Arbor
82818	N/A	N/A	1/2"	1/4"-28	Arbor

### Carbide Tipped Plywood Mortising Bits

Micrograin bits designed with undersized cut diameters to match up to the actual thickness of 1/4", 1/2" and 3/4" plywood. Produce a tight fit when mortising standard plywood.

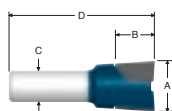
- 84600M is a solid carbide bit



Item #	A. Overall Diameter	B. Cutting Edge Length	C. Shank Diameter	D. Overall Length	Application
84600M	15/64"	3/4"	1/4"	2"	for 1/4" plywood
84601M	31/64"	3/4"	1/4"	2-1/4"	for 1/2" plywood
84602M	23/32"	3/4"	1/4"	2"	for 3/4" plywood
84625M	31/64"	1"	1/2"	2-5/8"	for 1/2" plywood
84603M	23/32"	1-1/4"	1/2"	2-7/8"	for 3/4" plywood

### Carbide Tipped Stair Routing Bit

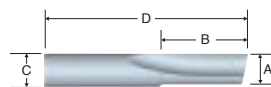
Micrograin bit cuts a dovetail-like joint for cutting stair stringers to accept stair treads.



Item #	A. Overall Diameter	B. Cutting Edge Length	C. Shank Diameter	D. Overall Length	Angle
85413M	7/8"	7/8"	1/2"	2-1/2"	3°

### Solid Carbide Single Flute Straight Bits

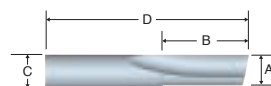
Designed for operations where high production feed rates are essential.



Item #	A. Overall Diameter	B. Cutting Edge Length	C. Shank Diameter	D. Overall Length
<b>NEW!</b> 85208M	1/16"	3/16"	1/4"	1-5/8"
<b>NEW!</b> 85209M	1/8"	7/16"	1/4"	2"
<b>NEW!</b> 85212M	3/16"	7/16"	1/4"	2"
<b>NEW!</b> 85215M	1/4"	3/4"	1/4"	2"

### Solid Carbide Double Flute Straight Bits

Micrograin bits provide exceptional smoothness of cut and balanced cutting with minimal vibration. Positive hook angles cut efficiently, and specially designed tips allow for fast plunge cutting. Strong webbing and heavy cutter backing provide superior bit life.



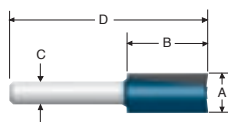
Item #	A. Overall Diameter	B. Cutting Edge Length	C. Shank Diameter	D. Overall Length
85213M	1/8"	7/16"	1/4"	2"
85214M	3/16"	7/16"	1/4"	2"
85617M	1/4"	1"	1/4"	2"



## Straight/Mortising Bits

### Carbide Tipped Double Flute Straight Bits

Micrograin bits designed to give excellent smoothness of cut and balanced cutting with minimal vibration. Positive hook angles cut efficiently while specially designed tips provide fast plunge cutting. Strong webbing and heavy cutter backing extend bit life.

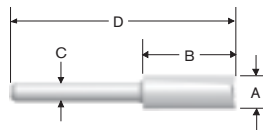


Item #	A. Overall Diameter	B. Cutting Edge Length	C. Shank Diameter	D. Overall Length
85221M	1/4"	3/4"	1/4"	2"
85250M	1/4"	7/8"	1/4"	2-1/8"
85460M*	1/4"	3/4"	1/2"	2-1/2"
85613M*	1/4"	1"	1/4"	2-1/4"
85459M*	1/4"	1"	1/4"	2-7/8"
85223M	9/32"	1"	1/4"	2-1/4"
NEW! 85274M	5/16"	3/4"	1/2"	2-1/2"
85224M	5/16"	1"	1/4"	2-1/4"
NEW! 85253M	5/16"	1"	1/2"	2-3/4"
NEW! 85277M	3/8"	3/4"	1/2"	2-1/2"
85225M	3/8"	1"	1/4"	2-1/4"
85241M	3/8"	1"	1/2"	2-3/4"
85276M	3/8"	1"	3/8"	2-1/2"
84207M	3/8"	1-1/4"	1/2"	2"
NEW! 85228M	3/8"	1-1/4"	3/8"	3-3/8"
NEW! 85254M	13/32"	3/4"	1/2"	2-1/2"
85226M	7/16"	1"	1/4"	2-1/8"
NEW! 85255M	7/16"	1-1/4"	1/2"	3"
85227M	1/2"	1"	1/4"	2-1/8"
85427M	1/2"	1"	1/2"	2-5/8"
NEW! 84209M	1/2"	1"	3/8"	2-1/2"
84210M	1/2"	1-1/4"	1/2"	2-7/8"
85242M	1/2"	1-1/2"	1/2"	3-1/8"
NEW! 85256M	1/2"	1-1/2"	1/2"	4-1/4"
85251M	1/2"	2"	1/2"	4-1/4"
85252M	1/2"	2-1/2"	1/2"	4-1/2"
NEW! 85257M	17/32"	1-1/4"	1/2"	2-7/8"
NEW! 85258M	9/16"	1-1/4"	1/2"	2-7/8"
85229M	9/16"	3/4"	1/4"	2-1/8"
85230M	5/8"	3/4"	1/4"	2"
85231M	5/8"	3/4"	1/4"	2"
85454M	5/8"	1-1/4"	1/2"	2-7/8"
85455M	5/8"	2"	1/2"	3-3/4"
NEW! 85259M	21/32"	1-1/4"	1/2"	2-7/8"
NEW! 85260M	11/16"	1-1/4"	1/2"	2-7/8"
85232M	3/4"	3/4"	1/4"	2"
85265M	3/4"	1-1/4"	1/2"	2-7/8"
NEW! 85222M	3/4"	2"	3/4"	4"
NEW! 82086M	3/4"	1-1/2"	1/2"	3-1/8"
NEW! 85272M	3/4"	2"	1/2"	3-5/8"
NEW! 82085M	3/4"	2-1/2"	3/4"	4-1/2"
NEW! 85273M	25/32"	1-1/4"	1/2"	2-7/8"
85262M	13/16"	3/4"	1/4"	2"
85457M	13/16"	1-1/4"	1/2"	2-7/8"
85458M	7/8"	1-1/4"	1/2"	2-7/8"
85243M	1"	1-1/4"	1/2"	2-7/8"
NEW! 85235M	1-1/16"	1-1/4"	1/2"	2-7/8"
85465M	1-1/8"	1-1/4"	1/2"	2-7/8"
85466M	1-1/4"	1-1/4"	1/2"	2-7/8"
85469M	1-1/2"	1-1/4"	1/2"	2-7/8"

\* Not guaranteed against breakage due to extreme length.

### High Speed Steel Double Flute Straight Bits

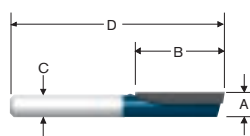
Provide smooth and balanced cutting with minimal vibration. Positive hook angles cut efficiently while specially designed tips provide fast plunge cutting. Strong webbing and heavy cutter backing extend bit life.



Item #	A. Overall Diameter	B. Cutting Edge Length	C. Shank Diameter	D. Overall Length
85096	1/4"	3/4"	1/4"	2"
85180	1/4"	1-1/8"	1/4"	2-3/8"
85097	5/16"	3/4"	1/4"	2"
85181	5/16"	1-1/8"	1/4"	2-3/8"
85098	3/8"	7/8"	1/4"	2-1/16"
85100	1/2"	7/8"	1/4"	2-1/4"
85140	1/2"	1-1/8"	1/2"	2-9/16"
85182	1/2"	2"	1/2"	4"
85102	5/8"	5/8"	1/4"	1-5/8"
85104	3/4"	5/8"	1/4"	1-5/8"

### Carbide Tipped Single Flute Straight Bits

Micrograin bits designed for roughing operations where high production feed rates are essential. Optimum chip clearance and specially designed tip allows for fast plunge cutting.



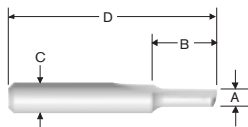
Item #	A. Overall Diameter	B. Cutting Edge Length	C. Shank Diameter	D. Overall Length
85279M	3/16"	7/16"	1/4"	2"
NEW! 84206M	1/4"	3/4"	1/4"	2"
NEW! 85404M	1/4"	3/4"	1/2"	2-1/2"
85410M	1/4"	1"	1/4"	2-1/4"
NEW! 85412M	9/32"	3/4"	1/4"	2-1/4"
85411M	5/16"	1"	1/4"	2-1/4"
NEW! 85263M	3/8"	1"	3/8"	2-1/2"
NEW! 85419M	3/8"	1-1/4"	3/8"	2-7/8"
85409M	3/8"	1"	1/2"	2-3/4"
85425M	1/2"	3/4"	1/2"	2-3/8"
85426M	1/2"	1-1/4"	1/2"	2-7/8"
NEW! 85402M	1/2"	1-1/2"	1/2"	2-1/8"
85264M	1/2"	2"	1/2"	4-1/4"



## Straight/Mortising Bits

### High Speed Steel Single Flute Straight Bits

Designed for roughing operations where high production feed rates are essential. Optimum chip clearance and specially designed tip allows for fast plunge cutting.

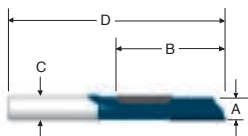


Item #	A. Overall Diameter	B. Cutting Edge Length	C. Shank Diameter	D. Overall Length	Quantity
85091	1/16"	1/8"	1/4"	1-3/8"	1
85092	1/8"	5/16"	1/4"	1-1/2"	1
85152	1/8"	5/8"	1/4"	1-31/32"	1
85152B100*	1/8"	5/8"	1/4"	1-31/32"	100
85094	3/16"	7/16"	1/4"	1-17/32"	1
85153	3/16"	3/4"	1/4"	2-1/32"	1
85153B100*	3/16"	3/4"	1/4"	2-1/32"	100
85093	5/32"	1/2"	1/4"	2"	1
85154	1/4"	1"	1/4"	2-1/4"	1

\* Bulk item.

### Staggertooth Bits

Micrograin bits with staggered cutting flutes give 2-flute balance with single flute chip clearance for fast plunge cutting.

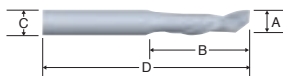


Item #	A. Overall Diameter	B. Cutting Edge Length	C. Shank Diameter	D. Overall Length
85291M	3/8"	1-3/8"	3/8"	3"
85201M	3/8"	1-1/2"	1/2"	3-1/8"
85292M	1/2"	1-1/2"	1/2"	3-1/8"
85278M	1/2"	2-1/4"	1/2"	4-1/2"
85202M	1/2"	1-1/2"	1/2"	3-1/8"

## Spiral Bits

### Solid Carbide Single Flute Compression Spirals

Bits feature open flutes with single edges for the most efficient chip-ejection at faster speeds.

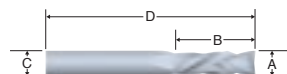


Item #	A. Overall Diameter	B. Cutting Edge Length	C. Shank Diameter	D. Overall Length
86018M	3/8"	7/8"	3/8"	3"
86019M	1/2"	1-1/4"	1/2"	3"
86020M	1/2"	1-5/8"	1/2"	3-1/2"

## Spiral Bits

### Solid Carbide Double Flute Compression Up/Down Spirals

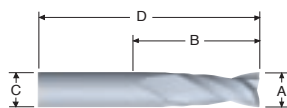
Ideal for general use with difficult-to-route materials. Specific bits router rigid hard plastics, double-sided plywood and melamine.



Item #	A. Overall Diameter	B. Cutting Edge Length	C. Shank Diameter	D. Overall Length
86026M	1/4"	7/8"	1/4"	2-1/2"
86022M	3/8"	1-1/4"	3/8"	3"
86023M	1/2"	1-1/4"	1/2"	3"
86024M	1/2"	1-1/2"	1/2"	3-1/2"
86025M	1/2"	1-5/8"	1/2"	3-1/2"

### Solid Carbide Double Flute Upcut Spirals

Bits work best on difficult-to-route materials under reduced spindle speeds or horsepower. The upcut yields superior chip removal and smooth finishes.

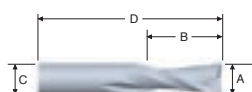


Item #	A. Overall Diameter	B. Cutting Edge Length	C. Shank Diameter	D. Overall Length
85923M	5/32"	5/8"	1/4"	2-1/2"
85924M	7/32"	1"	1/4"	2-1/2"
85925M	1/4"	1"	1/4"	2-1/2"
85926M	5/16"	1"	5/16"	2-1/2"
85927M	5/16"	1"	1/2"	3"
85928M	3/8"	1"	3/8"	2-1/2"
85929M	3/8"	1-1/4"	3/8"	3"
85932M	7/16"	1-1/4"	1/2"	3"
85933M	1/2"	1-1/4"	1/2"	3"
85935M	5/8"	1-5/8"	5/8"	3-1/2"
85936M	5/8"	2"	5/8"	4"
85937M	3/4"	1-5/8"	3/4"	4"

## Spiral Bits

### Solid Carbide Double Flute Downcut Spirals

Ideal for use when chip removal needs to be pushed down and away from the router motor. Excellent for templet cutting when downward pressure is advantageous.



Item #	A. Overall Diameter	B. Cutting Edge Length	C. Shank Diameter	D. Overall Length
85939M	5/32"	5/8"	1/4"	2-1/2"
85940M	7/32"	1"	1/4"	2-1/2"
85941M	1/4"	1"	1/4"	2-1/2"
85942M	5/16"	1"	5/16"	2-1/2"
85943M	5/16"	1"	1/2"	3"
85944M	3/8"	1"	3/8"	2-1/2"
85945M	3/8"	1-1/4"	3/8"	3"
85948M	7/16"	1-1/4"	1/2"	3"
85949M	1/2"	1-1/4"	1/2"	3"
85951M	5/8"	1-5/8"	5/8"	3-1/2"
85952M	5/8"	2"	5/8"	4"
85953M	3/4"	1-5/8"	3/4"	4"

### Solid Carbide Double Flute Extra-long Spirals

Suitable for use when long flute length is required. Especially useful for cutting the front built-up edge on a countertop when a thick, smooth edge is required.

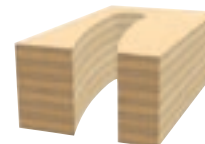
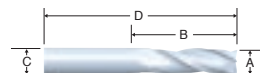
Industrial / CNC bit for high duty cycle applications



Item #	A. Overall Diameter	B. Cutting Edge Length	C. Shank Diameter	D. Overall Length	Spiral
85922M	1/2"	1-5/8"	1/2"	3-1/2"	Up

### Solid Carbide Triple Flute Upcut Spirals

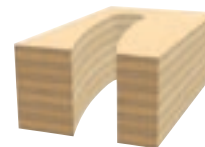
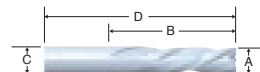
Bits work best on hard-to-route materials under reduced spindle speeds or horsepower. The upcut yields superior chip removal and a smooth finish.



Item #	A. Overall Diameter	B. Cutting Edge Length	C. Shank Diameter	D. Overall Length
85955M	1/4"	1"	1/4"	2-1/2"
85956M	5/16"	1"	5/16"	2-1/2"
85957M	5/16"	1"	1/2"	3"
85958M	3/8"	1"	3/8"	2-1/2"
85959M	3/8"	1-1/4"	3/8"	3"
85960M	3/8"	1-1/4"	1/2"	3"
85961M	1/2"	1-1/4"	1/2"	3"
85962M	1/2"	1-1/2"	1/2"	3-1/2"
85963M	1/2"	2"	1/2"	4"
85964M	5/8"	1-1/2"	5/8"	4"
85965M	5/8"	2"	5/8"	4"
85966M	3/4"	1-1/2"	3/4"	4"
85967M	3/4"	2-1/8"	3/4"	4"

### Solid Carbide Triple Flute Downcut Spirals

Ideal for penetrating hard-to-route materials under reduced spindle speeds or horsepower. The downcut holds the material and forces chips down during routing.



Item #	A. Overall Diameter	B. Cutting Edge Length	C. Shank Diameter	D. Overall Length
85968M	1/4"	1"	1/4"	2-1/2"
85969M	5/16"	1"	5/16"	2-1/2"
85970M	5/16"	1"	1/2"	3"
85971M	3/8"	1"	3/8"	2-1/2"
85972M	3/8"	1-1/4"	3/8"	3"
85973M	3/8"	1-1/4"	1/2"	3"
85974M	1/2"	1"	1/2"	3"
85975M	1/2"	1-1/4"	1/2"	3"
85976M	1/2"	1-1/2"	1/2"	3-1/2"
85977M	1/2"	2"	1/2"	4"
85978M	5/8"	1-1/2"	5/8"	4"
85979M	5/8"	2"	5/8"	4"
85980M	3/4"	1-1/2"	3/4"	4"
85981M	3/4"	2-1/8"	3/4"	4"

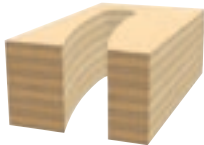
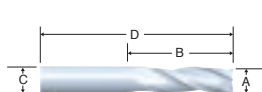


### Spiral Bits

#### Solid Carbide Double Flute Up Spirals

For use when material needs to be pulled in an upward motion toward the router motor, improving chip removal. Excellent when dust collection is required.

Industrial / CNC bit for high duty cycle applications

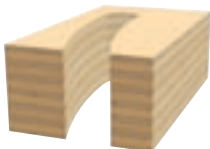
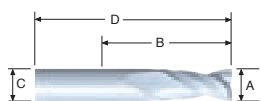


Item #	A. Overall Diameter	B. Cutting Edge Length	C. Shank Diameter	D. Overall Length
85908M	1/8"	1/2"	1/4"	2"
85909M	3/16"	3/4"	1/4"	2"
85910M	1/4"	3/4"	1/4"	2-1/2"
85911M	1/4"	1"	1/4"	2-1/2"
85912M	3/8"	1"	3/8"	2-1/2"
85913M	3/8"	1-1/4"	1/2"	3"
85914M	1/2"	1-1/4"	1/2"	3"
85917M	1/2"	1-5/8"	1/2"	3-1/2"

#### Solid Carbide Double Flute Down Spirals

For use when material needs to be pushed away from the router motor. Excellent bits for templet cutting when downward pressure is advantageous.

Industrial / CNC bit for high duty cycle applications



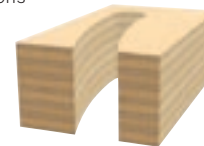
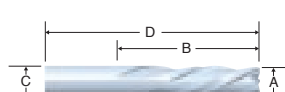
Item #	A. Overall Diameter	B. Cutting Edge Length	C. Shank Diameter	D. Overall Length
85900M	1/8"	1/2"	1/4"	2"
85901M	3/16"	3/4"	1/4"	2"
85902M	1/4"	3/4"	1/4"	2-1/2"
85903M	1/4"	1"	1/4"	2-1/2"
85904M	3/8"	1"	3/8"	2-1/2"
85905M	3/8"	1-1/4"	1/2"	3"
85906M	1/2"	1-1/4"	1/2"	3"
85918M	1/2"	1-5/8"	1/2"	3-1/2"

### Plastic Cutting Bits

#### Solid Carbide Double Flute Chipbreaker Spirals

Appropriate for use when faster feed rates and chip removal are desired. Available in up or down spirals to suit all applications.

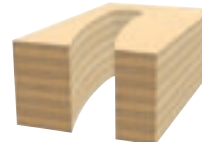
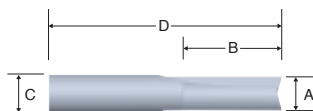
Industrial / CNC bit for high duty cycle applications



Item #	A. Overall Diameter	B. Cutting Edge Length	C. Shank Diameter	D. Overall Length	Spiral
85907M	1/2"	1-1/8"	1/2"	3"	Down
85915M	1/2"	1-1/8"	1/2"	3"	Up
85919M	1/2"	1-5/8"	1/2"	3-1/2"	Up
85920M	1/2"	1-5/8"	1/2"	3-1/2"	Down

#### Solid Carbide Double Flute Straight Bits

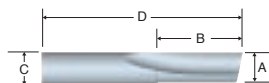
Micrograin bits for general purpose routing of difficult-to-cut materials, particularly when smaller diameters are required



Item #	A. Overall Diameter	B. Cutting Edge Length	C. Shank Diameter	D. Overall Length
85983M	5/32"	7/16"	1/4"	2"
85985M	7/32"	3/4"	1/4"	2"
85986M	1/4"	3/4"	1/4"	2-1/2"
85987M	1/4"	1"	1/4"	2-1/2"
85988M	5/16"	1-1/8"	5/16"	3"
85989M	5/16"	1"	1/2"	1-7/64"
85990M	3/8"	1-1/8"	5/16"	3"
85991M	3/8"	1-1/4"	3/8"	3"
85992M	3/8"	1-1/4"	1/2"	3"
85993M	7/16"	1-1/8"	1/2"	3"
85994M	1/2"	1-1/8"	1/2"	3"
85995M	1/2"	1-5/8"	1/2"	3-1/2"

#### Solid Carbide Single Flute O-flute Bits

Micrograin bits for fast plastic cutting at high speeds. Ideal for soft plastics such as ABS, polycarbonate, polyethylene and PVC. The single flute design allows for a faster feed rate.



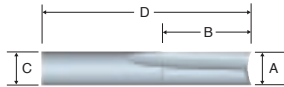
Item #	A. Overall Diameter	B. Cutting Edge Length	C. Shank Diameter	D. Overall Length
85996M	1/8"	1/2"	1/4"	2"
85997M	3/16"	5/8"	1/4"	2"
85998M	1/4"	3/4"	1/4"	2-1/2"
85999M	1/4"	1"	1/4"	2-1/2"
86002M	3/8"	1"	3/8"	2-1/2"
86005M	1/2"	1"	1/2"	3"



## Plastic Cutting Bits

### Solid Carbide Double Flute O-flute Bits

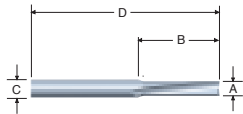
Micrograin bits for fast, smooth plastic cutting at high speeds. 2-flute design provides an exceptional edge finish. Good for soft plastics such as ABS, polycarbonate, polyethylene and PVC.



Item #	A. Overall Diameter	B. Cutting Edge Length	C. Shank Diameter	D. Overall Length
86007M	1/8"	1/2"	1/4"	2"
86008M	3/16"	5/8"	1/4"	2"
86010M	1/4"	1"	1/4"	2-1/2"
86013M	3/8"	1"	3/8"	2-1/2"
86016M	1/2"	1"	1/2"	3"

### Solid Carbide Double Flute Acrylic Bit

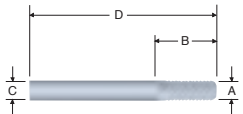
Micrograin bit for cutting single or multiple layers of acrylics and similar plastics. Unique bit geometry produces an improved finish, reduces heat buildup and prevents welding in the cut.



Item #	A. Overall Diameter	B. Cutting Edge Length	C. Shank Diameter	D. Overall Length
85611M	1/4"	1"	1/4"	2-1/2"

### Solid Carbide Fiberglass Bit/Burr Bit

Useful for cutting fiberglass, epoxies and similar composite material



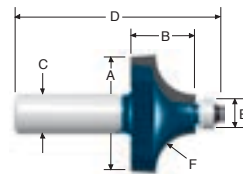
Item #	A. Overall Diameter	B. Cutting Edge Length	C. Shank Diameter	D. Overall Length
85619M	1/4"	3/4"	1/4"	2"

## Edge Forming Bits



### Carbide Tipped Beading Bits

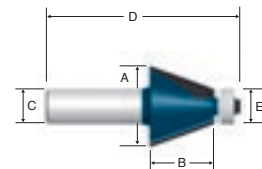
Micrograin control cut bits used to create attractive, decorative edging. Items 84413M and 85493M are not control cut bits.



Item #	A. Overall Diameter	B. Cutting Edge Lgth.	C. Shank Diameter	D. Overall Length	E. Bearing Diameter	F. Radius
84413M	7/8"	1/2"	1/2"	2-7/16"	3/8"	3/16"
85493M	7/8"	1/2"	1/4"	2"	3/8"	3/16"
85494M	1"	1/2"	1/4"	2"	3/8"	1/4"
84416M	1"	1/2"	1/2"	2-7/16"	3/8"	1/4"
85495M	1-1/8"	1/2"	1/4"	2-1/16"	3/8"	5/16"
84419M	1-1/8"	1/2"	1/2"	2-7/16"	3/8"	5/16"
85496M	1-1/4"	5/8"	1/4"	2-3/16"	3/8"	3/8"
85599M	1-1/4"	5/8"	1/2"	2-9/16"	3/8"	3/8"
85497M	1-1/2"	3/4"	1/4"	2-1/4"	3/8"	1/2"
85600M	1-1/2"	3/4"	1/2"	2-5/8"	3/8"	1/2"

### Carbide Tipped Chamfer Bits

Micrograin control cut bits for beveling and decorative edging.

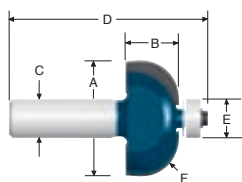


Item #	A. Overall Diameter	B. Cutting Edge Lgth.	C. Shank Diameter	D. Overall Length	E. Bearing Diameter	Angle
85299M	1-1/4"	15/16"	1/2"	2-7/8"	1/2"	22.5°
85597M	1-1/4"	1/2"	1/2"	2-3/8"	1/2"	45°
85298M	1-1/4"	1/2"	1/4"	2"	1/2"	45°
85593M	2-1/2"	1"	1/2"	2-7/8"	1/2"	45°

## Edge Forming Bits

### Carbide Tipped Cove Bits

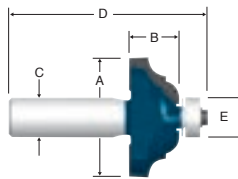
Micrograin control cut bits for decorative edging and period furniture.



Item #	A. Overall Diameter	B. Cutting Edge Lgth.	C. Shank Diameter	D. Overall Length	E. Bearing Diameter	F. Radius
85205M	7/8"	9/16"	1/4"	2"	1/2"	1/4"
84425M	7/8"	9/16"	1/2"	2-3/8"	1/2"	1/4"
85206M	1-1/8"	9/16"	1/4"	2"	1/2"	3/8"
84428M	1-1/8"	9/16"	1/2"	2-3/8"	1/2"	3/8"
<b>NEW!</b> 85204M	3/4"	9/16"	1/4"	2"	1/2"	3/16"
85207M	1-3/8"	3/4"	1/4"	2-1/4"	1/2"	1/2"
84431M	1-3/8"	3/4"	1/2"	2-1/2"	1/2"	1/2"
<b>NEW!</b> 84430M	1-5/8"	11/16"	1/2"	2-1/2"	1/2"	5/8"
<b>NEW!</b> 84437M	3/4"	9/16"	1/2"	2-3/8"	1/2"	3/4"

### Carbide Tipped Classical Bits

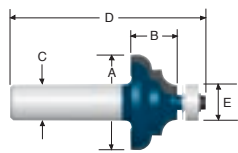
Micrograin control cut bits that add classic beauty with decorative edging.



Item #	A. Overall Diameter	B. Cutting Edge Length	C. Shank Diameter	D. Overall Length	E. Bearing Diameter
85579M	1-1/4"	1/2"	1/4"	2"	1/2"
85580M	1-1/4"	1/2"	1/2"	2-3/8"	1/2"
85581M	1-1/2"	5/8"	1/4"	2-1/8"	1/2"
85582M	1-1/2"	5/8"	1/2"	2-1/2"	1/2"

### Carbide Tipped Cove & Bead Bits

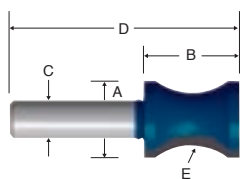
Micrograin bits used to create an attractive accent with a classic woodworking design.



Item #	A. Overall Diameter	B. Cutting Edge Length	C. Shank Diameter	D. Overall Length	E. Bearing Diameter
85604M	1-3/8"	11/16"	1/4"	2-3/16"	1/2"
85605M	1-3/8"	11/16"	1/2"	2-9/16"	1/2"

### Carbide Tipped Convex Edging Bit

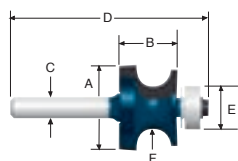
Micrograin bits used to create a shallow bullnose. Cutters above and below bit creates a top and bottom fillet on thicker stock.



Item #	A. Overall Diameter	B. Cutting Edge Length	C. Shank Diameter	D. Overall Length	E. Radius
<b>NEW!</b> 84440M	13/16"	1-1/4"	1/2"	2-3/4"	25/32"

### Carbide Tipped Edge Beading Bits

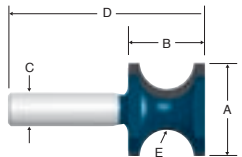
Versatile micrograin bits used for adding attractive edging on new pieces and matching many older molding cuts for remodeling work.



Item #	A. Overall Diameter	B. Cutting Edge Lgth.	C. Shank Diameter	D. Overall Length	E. Bearing Diameter	F. Radius
85631M	7/8"	9/16"	1/4"	2-1/8"	1/2"	1/8"
85632M	7/8"	9/16"	1/2"	2-1/2"	1/2"	1/8"
85666M	1-1/8"	11/16"	1/4"	2-1/4"	1/2"	3/16"
85667M	1-1/8"	11/16"	1/2"	2-5/8"	1/2"	3/16"
85668M	1-1/4"	3/4"	1/4"	2-1/4"	5/8"	1/4"
85669M	1-1/4"	3/4"	1/2"	2-5/8"	5/8"	1/4"

### Carbide Tipped Bullnose Bits

Micrograin bits used for window sills, shelves or stair treads.

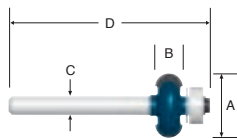


Item #	A. Overall Diameter	B. Cutting Edge Length	C. Shank Diameter	D. Overall Length	E. Radius
<b>NEW!</b> 84438M	17/32"	1/2"	1/4"	1-3/4"	1/8"
84432M	17/32"	1/2"	1/4"	1-3/4"	1/8"
84435M	7/8"	3/4"	1/4"	2"	3/16"
84433M	7/8"	3/4"	1/2"	2-1/4"	1/4"
84434M	1-1/4"	1-5/16"	1/2"	2-3/4"	3/8"
84436M	2"	2"	1/2"	3-1/2"	1/2"

## Edge Forming Bits

### Carbide Tipped Edge Fluting Bits

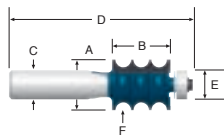
Micrograin control cut bits used to create single or multiple flutes.



Item #	A. Overall Dia.	B. Cutting Edge Lgth.	C. Shank Dia.	D. Overall Length	Bearing Dia.	Cutting Radius	Cutting Depth
84615M	3/4"	1/4"	1/4"	2-1/4"	1/2"	1/8"	1/8"
84616M	7/8"	3/8"	1/4"	2-3/8"	1/2"	13/64"	1/4"

### Carbide Tipped Multi Bead/Reeding Bits

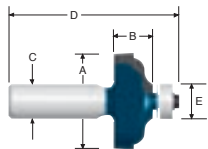
Micrograin control cut bits for creating classic triple beading with fillets in one pass.



Item #	A. Overall Diameter	B. Cutting Edge Lgth.	C. Shank Diameter	D. Overall Length	E. Bearing Diameter	F. Radius
84610M	7/8"	1"	1/4"	2-5/8"	1/2"	1/8"
84611M	7/8"	1"	1/2"	3"	1/2"	1/8"

### Carbide Tipped Ogee Bits with Fillet

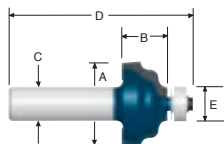
Micrograin control cut bits allow for three distinct cuts with one bit. Graceful lines of the ogee cut can be attractively accented with one or two fillets by lowering the depth setting or using 3/8" bearing (Item 3 600 900 501).



Item #	A. Overall Diameter	B. Cutting Edge Lgth.	C. Shank Diameter	D. Overall Length	E. Bearing Diameter
85584M	1-3/8"	1/2"	1/4"	2-1/16"	1/2"
85585M	1-3/8"	1/2"	1/2"	2-1/2"	1/2"
85586M	1-5/8"	3/4"	1/2"	2-5/8"	1/2"

### Carbide Tipped Wavy Edge Bits

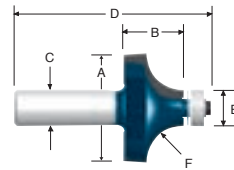
Micrograin bits with a unique pattern to create soft, rounded corners.



Item #	A. Overall Diameter	B. Cutting Edge Lgth.	C. Shank Diameter	D. Overall Length	E. Bearing Diameter
85606M	1-1/4"	11/16"	1/4"	2-1/4"	1/2"
85607M	1-1/4"	11/16"	1/2"	2-5/8"	1/2"

### Carbide Tipped Roundover Bits

Micrograin bits used for smooth, uniformly rounded edges. A lower depth setting produces a rounded corner with a decorative bead.

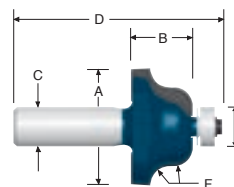


Item #	A. Overall Diameter	B. Cutting Edge Lgth.	C. Shank Diameter	D. Overall Length	E. Bearing Diameter	F. Radius
85289M	5/8"	5/16"	1/4"	1-3/4"	1/2"	1/16"
85290M	3/4"	3/8"	1/4"	2"	1/2"	1/8"
85588M	3/4"	3/8"	1/2"	2-5/16"	1/2"	1/8"
85616M	3/4"	3/8"	1/4"	2-1/4"	1/2"	5/32"
85587M	5/8"	5/16"	1/2"	2-1/4"	1/2"	1/16"
85293M	7/8"	1/2"	1/4"	2"	1/2"	3/16"
84402M	7/8"	1/2"	1/2"	2-7/16"	1/2"	3/16"
85294M*	1"	1/2"	1/4"	2"	1/2"	1/4"
84405M*	1"	1/2"	1/2"	2-7/16"	1/2"	1/4"
85295M*	1-1/8"	1/2"	1/4"	2-1/16"	1/2"	5/16"
84408M*	1-1/8"	1/2"	1/2"	2-7/16"	1/2"	5/16"
85296M*	1-1/4"	5/8"	1/4"	2-3/16"	1/2"	3/8"
85594M*	1-1/4"	5/8"	1/2"	2-9/16"	1/2"	3/8"
85297M*	1-1/2"	3/4"	1/4"	2-1/4"	1/2"	1/2"
85595M*	1-1/2"	3/4"	1/2"	2-5/8"	1/2"	1/2"
85596M*	1-1/2"	3/4"	1/4"	2-1/4"	1/2"	5/8"
85434M*	2"	1"	1/2"	2-7/8"	1/2"	3/4"
85432M*	2-1/4"	1-1/4"	1/2"	3-1/16"	1/2"	7/8"
85433M*	2-1/2"	1-1/4"	1/2"	3-3/16"	1/2"	1"

\* Control cut bit.

### Carbide Tipped Roman Ogee Bits

Micrograin control cut bits used for decorative edging and period furniture.

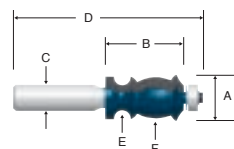


Item #	A. Overall Diameter	B. Cutting Edge Lgth.	C. Shank Diameter	D. Overall Length	E. Bearing Diameter	F. Radius
85270M	1"	5/8"	1/4"	2-1/8"	1/2"	5/32"
85591M	1"	5/8"	1/2"	2-1/2"	1/2"	5/32"
85271M	3/8"	7/8"	1/4"	2-1/4"	1/2"	1/4"
85592M	3/8"	7/8"	1/2"	2-5/8"	1/2"	1/4"

### Carbide Tipped Traditional Bit

Classical architectural molding micrograin bit for making furniture and cabinet molding, door and window casing and other millwork.

• Recommended for use with a router table



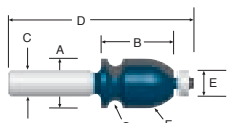
Item #	A. Overall Diameter	B. Cutting Edge Lgth.	C. Shank Diameter	D. Overall Length	E. Small Radius	F. Large Radius
84622M	1"	1-5/8"	1/2"	3-1/4"	1/8"	25/32"

## Edge Forming Bits

### Carbide Tipped Cove & Bead Large Bit

Classical architectural molding micrograin bit for making furniture and cabinet molding, door and window casing and other millwork.

- Recommended for use with a router table

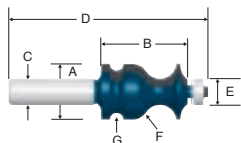


Item #	A. Overall Dia.	B. Cutting Edge Lgth.	C. Shank Dia.	D. Overall Length	E. Bearing Dia.	F. Large Radius	G. Small Radius
84612M	7/8"	1-1/2"	1/2"	3-3/8"	1/2"	5/16"	5/32"

### Carbide Tipped Ogee & Bead Bit with Fillet

Classical architectural molding micrograin bit for making furniture and cabinet molding, door and window casing and other millwork.

- Recommended for use with a router table

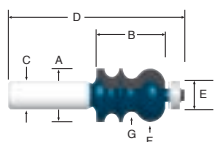


Item #	A. Overall Dia.	B. Cutting Edge Lgth.	C. Shank Dia.	D. Overall Length	E. Bearing Dia.	F. Large Radius	G. Small Radius
84621M	1"	1-11/16"	1/2"	3-1/4"	1/2"	3/8"	1/8"

### Carbide Tipped Reverse Curve Ogee & Bead Bit

Classical architectural molding micrograin bit for making furniture and cabinet molding, door and window casing and other millwork.

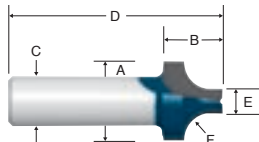
- Recommended for use with a router table



Item #	A. Overall Dia.	B. Cutting Edge Lgth.	C. Shank Dia.	D. Overall Length	E. Bearing Dia.	F. Large Radius	G. Small Radius
84620M	7/8"	1-3/8"	1/2"	3-3/8"	1/2"	5/16"	5/32"

### Carbide Tipped Plunge Roundover Bits

Micrograin control cut bits for special decorative grooving and edging.

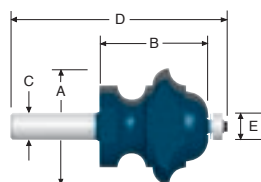


Item #	A. Overall Diameter	B. Cutting Edge Lgth.	C. Shank Diameter	D. Overall Length	E. Small Diameter	F. Radius
85470M	1"	5/8"	1/2"	2-1/8"	1/4"	3/8"
85471M	3/4"	1/2"	1/2"	2"	1/4"	1/4"
85472M	1-3/8"	1"	1/2"	2-1/2"	3/8"	1/2"

### Carbide Tipped Multi-form Bit

Micrograin bit achieves many profiles and architectural designs. With a simple adjustment to the cutter height and fence position, 50 molding patterns are available.

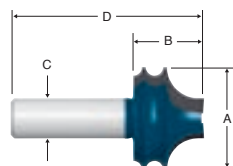
- Recommended for use with a router table



Item #	A. Overall Diameter	B. Cutting Edge Length	C. Shank Diameter	D. Overall Length	E. Bearing Diameter
85700M	2-1/4"	1-7/8"	1/2"	2-3/4"	1/2"

### Carbide Tipped Multi-profile Bit

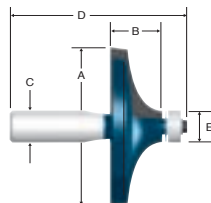
Micrograin control cut bit for creating an unlimited variety of profiles by varying cutter height, fence position and number of passes.



Item #	A. Overall Diameter	B. Cutting Edge Length	C. Shank Diameter	D. Overall Length
84532M	7/8"	1-1/32"	1/2"	2-3/4"

### Carbide Tipped Table Edge Bit

Creates a wide profile for attractive edging and curve for tables or handrails.



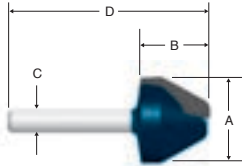
Item #	A. Overall Diameter	B. Cutting Edge Length	C. Shank Diameter	D. Overall Length	E. Bearing Diameter
84515M	2-3/4"	5/8"	1/2"	2-1/2"	1/2"



## Edge Forming Bits

### Carbide Tipped 60 Degree Lettering Bit

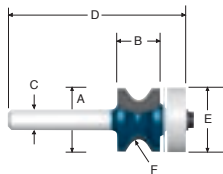
Suitable for door-front grooving, lettering, and sign work with a 60 degree angle for sharp, highly readable v-groove lettering.



Item #	A. Overall Diameter	B. Cutting Edge Length	C. Shank Diameter	D. Overall Length
85540M	1"	3/4"	1/4"	2-1/2"

### Carbide Tipped Chair Mat Bit

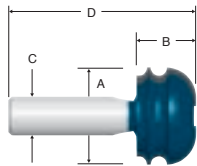
Micrograin control cut bit to cut out and edge form chair mats and other items fabricated from softer plastic such as vinyl and acrylic in a single operation. Bit is designed to help minimize edge cracking in such materials and is also suitable for use with 1/4" and thinner wood and plywood.



Item #	A. Overall Diameter	B. Cutting Edge Lgth.	C. Shank Diameter	D. Overall Length	E. Bearing Diameter	F. Radius
85612M	47/64"	17/32"	1/4"	2-7/32"	47/62"	3/32"

### Carbide Tipped Cove Bit

One bit produces multiple designs by adjusting the bit height for grooving or mouldings with a decorative layered effect.



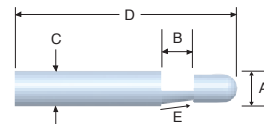
Item #	A. Overall Diameter	B. Cutting Edge Length	C. Shank Diameter	D. Overall Length
84530	1-1/4"	49/64"	1/2"	2-25/64"

## Trimming/Cutout Bits



### Solid Carbide Bevel Trimmer Bit

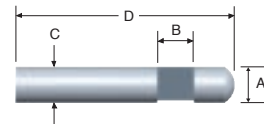
Provides a 7-1/2° bevel on the trim edge of plastic laminate surfaces. The self-pilot eliminates guide assembly.



Item #	A. Overall Diameter	B. Cutting Edge Lgth.	C. Shank Diameter	D. Overall Length	E. Angle	Quantity
85286	1/4"	1/4"	1/4"	1-1/2"	7-1/2°	1
85286B100	1/4"	1/4"	1/4"	1-1/2"	7-1/2°	100

### Solid Carbide Flush Trimmer Bit

Self-piloting bit makes flush, trim and edge cuts.

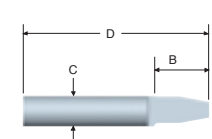
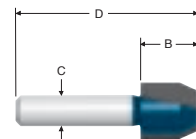


Item #	A. Overall Diameter	B. Cutting Edge Lgth.	C. Shank Diameter	D. Overall Length	Angle	Quantity
85285	1/4"	1/4"	1/4"	1-1/2"	7-1/2°	1
85285B100	1/4"	1/4"	1/4"	1-1/2"	7-1/2°	100

### Combination Flush & Bevel Trimmer Bits

Micrograin bits combine bevel or flush trim cuts in a single bit. Use with router guide assembly.

- 85288 is a solid carbide steel bit
- 85261M is a carbide tipped bit



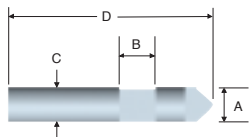
Item #	A. Overall Diameter	B. Cutting Edge Lgth.	C. Shank Diameter	D. Overall Length	Type of Cut
85261M	1/2"	1/2"	1/4"	1-3/4"	Flush or 22° bevel
85288	1/4"	3/8"	1/4"	1-1/2"	Flush or 10° bevel



## Trimming/Cutout Bits

### Solid Carbide Hole & Flush Cut Trimmer Bit

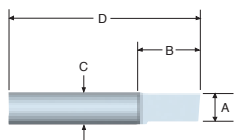
Bit drills through surface lamination into precut openings and trims edges flush in one operation.



Item #	A. Overall Diameter	B. Cutting Edge Length	C. Shank Diameter	D. Overall Length
85287	1/4"	1/4"	1/4"	1-1/2"

### Solid Carbide Rip Bit & Slotter

Used for slotting or ripping sheets of laminates, woods and paneling.

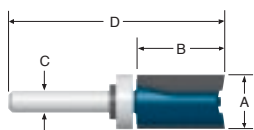


Item #	A. Overall Diameter	B. Cutting Edge Length	C. Shank Diameter	D. Overall Length
85280	1/4"	5/16"	1/4"	1-1/2"

### Carbide Tipped Top Bearing Mounted Straight/Trim Bits

Micrograin bits with top mounted ball bearing ride against templet for pattern routing.

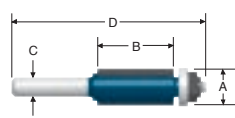
- Replacement collar 3 600 231 500
- Replacement set screw 3 603 401 506



Item #	A. Overall Diameter	B. Cutting Edge Length	C. Shank Diameter	D. Overall Length
<b>NEW!</b> 85674M	1/2"	1/4"	1/4"	1-5/8"
85680M	1/2"	1"	1/4"	2-1/2"
<b>NEW!</b> 85672M	1/2"	1-1/4"	1/4"	2-3/4"
85681M	5/8"	1"	1/4"	2-3/4"
85682M	3/4"	1"	1/4"	2-1/2"
85671M	1-1/8"	1-1/2"	1/2"	3-1/2"

### Carbide Tipped Double Flute Laminate Flush Trimming Bits

Micrograin bits ideal for fast, smooth, accurate trim cuts with a shielded, compact ball bearing pilot.

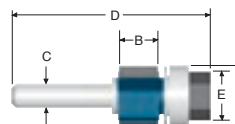


Item #	A. Overall Diameter	B. Cutting Edge Lgth.	C. Shank Diameter	D. Overall Length	Type of Cut
<b>NEW!</b> 84501M	1/4"	3/4"	1/4"	2-15/32"	Flush
85269M	3/8"	1/2"	1/4"	2-1/8"	Flush
85268M	3/8"	1"	1/4"	2-5/8"	Flush
85437M	1/2"	3/8"	1/4"	2-5/64"	Flush or 22° bevel
85267M	1/2"	1/2"	1/4"	2-1/4"	Flush
85441M	1/2"	1"	1/2"	3-1/4"	Flush
<b>NEW!</b> 85440M	1/2"	5/16"	1/4"	2"	Flush or 15° bevel
<b>NEW!</b> 85438M	1/2"	5/16"	1/4"	2"	Flush or 25° bevel
<b>NEW!</b> 85424M	1/2"	3/8"	1/4"	1-3/4"	22° bevel
85442M	1/2"	2"	1/2"	4-27/64"	Flush
85266M	1/2"	1"	1/4"	2-5/8"	Flush
84500M	3/4"	9/16"	1/2"	2-3/8"	Flush

### Carbide Tipped Double Flute Laminate Trimmer Assemblies

Micrograin bits ideal for fast, accurate trim cuts.

- Shank replacement arbor 82808



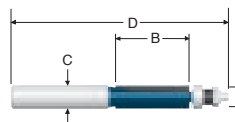
Item #	A. Overall Diameter	B. Cutting Edge Lgth.	C. Shank Diameter	D. Overall Length	E. Bearing Diameter	Angle
85431M	5/8"	3/8"	1/4"	1-15/16"	5/8"	10°
85430M	5/8"	3/8"	1/4"	1-15/16"	5/8"	Flush
85435M*	5/8"	25/64"	1/4"	Fits 85430M		Flush
85436M*	39/64"	3/8"	1/4"	Fits 85431M		10°

\* Replacement cutters

### Carbide Tipped Double Flute Templet/Trimming Bit

Micrograin bit provides smooth cuts for laminate trimming, cutouts and pattern cutting. It can also be used with two ball bearings to widen the bearing surface and reduce templet wear.

- Extra ball bearing 2 610 906 500

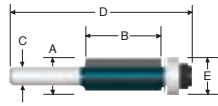


Item #	A. Overall Diameter	B. Cutting Edge Lgth.	C. Shank Diameter	D. Overall Length
85601M	1/2"	1-1/2"	1/2"	4-1/2"

## Trimming/Cutout Bits

### Carbide Tipped Triple Flute Laminate Flush Trimming Bit

Micrograin bit provides chatter-free production trimming with an extra smooth, flush trim cut. Compact ball-bearing assembly is equipped with a glue shield.

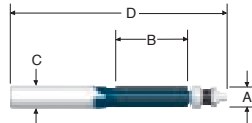


Item #	A. Overall Diameter	B. Cutting Edge Length	C. Shank Diameter	D. Overall Length	E. Bearing Diameter
85216M	1/2"	1"	1/4"	2-9/16"	1/2"
<b>NEW!</b> 85439M	1/2"	1"	1/2"	3-1/4"	1/2"

### Carbide Tipped Triple Flute Trimming Bit

Micrograin bit for laminate trimming and trim cuts on heavier work when cutting with a templet. Can be used with 2 ball bearings to widen the bearing surface and reduce templet wear.

- Extra ball bearing 2 610 906 500

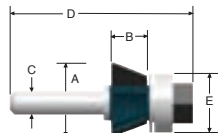


Item #	A. Overall Diameter	B. Cutting Edge Length	C. Shank Diameter	D. Overall Length
85602M	1/2"	1-1/2"	1/2"	4-1/2"

### Carbide Tipped Triple Flute Flush & Bevel Laminate Trimmer Assemblies

Micrograin bits for extra smooth production trimming. Assembly includes an arbor, replaceable 3-wing cutter and ball bearing.

- Replacement arbor 82808



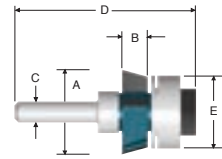
Item #	A. Overall Dia.	B. Cutting Edge Lgth.	C. Shank Dia.	D. Overall Length	E. Bearing Dia.	Angle	Fits
85421M	5/8"	3/8"	1/4"	1-61/64"	5/8"	9°	—
85422M	3/4"	3/8"	1/4"	1-15/16"	5/8"	22°	—
85420M	7/8"	3/8"	1/4"	1-15/16"	5/8"	Flush	—
85423M	1"	1/4"	1/4"	2-1/4"	1"	45°	—
85509M*	5/8"	3/8"	1/4"	-	-	Flush	85421M
85511M*	29/32"	3/8"	1/4"	-	-	22°	85420M
85512M*	1-39/64"	1/4"	1/4"	-	-	45°	85423M
85516M*	47/64"	3/8"	1/4"	-	-	9°	85422M

\* Replacement cutters

### Carbide Tipped Four Flute Laminate Trimmer Assemblies

Micrograin bits for ultra-smooth finish trimming. Ball bearing is equipped with a glue shield and individual assembly components are replaceable.

- Replacement arbor 82812



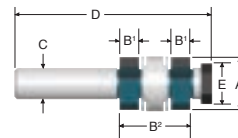
Item #	A. Overall Diameter	B. Cutting Edge Lgth.	C. Shank Diameter	D. Overall Length	E. Bearing Diameter	Angle
85414M	7/8"	5/16"	1/4"	2-1/8"	7/8"	Flush
85415M	7/8"	5/16"	1/4"	2-1/8"	7/8"	15°
85417M*	7/8"	5/16"	5/16"	—	—	Flush

\* Replacement cutters

### Carbide Tipped Four Flute Double Flush Trimmer Assembly

Micrograin bit for flush trimming laminates on both sides of a piece in a single pass. Provided spacers adjust distance between cutters to allow width of cut from 1/2" to 1-1/2". 4-flute design provides ultra-smooth finish.

- Replacement arbor 82813
- Spacers 3 600 200 503

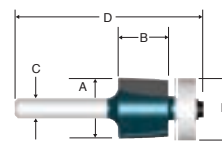


Item #	A. Overall Dia.	B1. Cutting Edge Lgth.	B2. Overall Cutting Lgth.	C. Shank Dia.	D. Overall Lgth.	E. Bearing Dia.
85416M	7/8"	5/16"	Adjustable 1/2" to 1-1/2"	1/2"	3-9/32"	7/8"
85417M*	7/8"	5/16"	N/A	5/16"	N/A	N/A

\* Replacement cutters

### Carbide Tipped Helical Laminate Trimming Bits

Provide extra smooth production trimming.

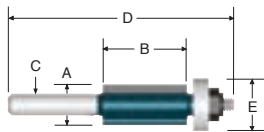


Item #	A. Overall Diameter	B. Cutting Edge Lgth.	C. Shank Diameter	D. Overall Length	E. Bearing Diameter	Angle
85452M	3/4"	5/8"	1/4"	2-1/4"	3/4"	Flush
85453M	3/4"	3/8"	1/4"	2"	3/4"	15°

## Trimming/Cutout Bits

### Carbide Tipped Overhang Cutoff Bits

Micrograin bits for rough sizing of plastic laminates, prior to gluing, without scribing or sawing. Bit leaves a slight overhang and is ideal for tops with irregular shapes.



Item #	A. Overall Diameter	B. Cutting Edge Lgth.	C. Shank Diameter	D. Overall Length	E. Bearing Diameter	Overhang
85217M*	11/32"	1/2"	1/4"	2-19/64"	3/4"	3/16"
85211M**	1/2"	1/2"	1/4"	2"	5/8"	1/16"
85210M**	1/2"	1"	1/4"	2-11/16"	5/8"	1/16"

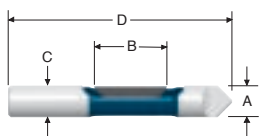
\* Single flute.

\*\* Double flute.

### Pilot Panel Bits with Drill-through Point-Single Flute

For windows and door cutouts in abrasive insulation materials, plywood and paneling.

- Drill-through pilot for guiding on templet or framing after panel has been mounted
- The concave grind offers a faster cut over the straight grind pilot panel bits



Item #	A. Cut Diameter	B. Flute Length	C. Shank Diameter	D. Overall Length
<b>Carbide Tipped - Straight Fluted</b>				
85244	1/4"	3/4"	1/4"	2-9/16"
85245	3/8"	1"	3/8"	3"
85246	1/2"	1-3/16"	1/2"	4-3/4"
85407M	1/2"	2"	1/2"	4-3/4"

#### Carbide Tipped - Concave Fluted

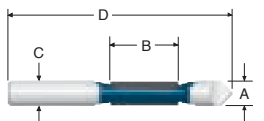
85244M	1/4"	3/4"	1/4"	2-1/2"
85245M	3/8"	1"	3/8"	3"
85246M	1/2"	1-3/16"	1/2"	3-5/8"

#### High Speed Steel

85146	1/4"	3/4"	1/4"	2-5/8"
85147	3/8"	7/8"	3/8"	3"
85188	1/2"	1-1/8"	1/2"	3-5/8"

### Pilot Panel Bits with Drill-through Point-Two Flutes

Two flutes give smooth cuts and even feed rates without chatter.



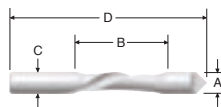
Item #	A. Cut Diameter	B. Flute Length	C. Shank Diameter	D. Overall Length
85428M	3/8"	1"	3/8"	3
85429M	1/2"	1-3/16"	1/2"	3-1/2

NEW!

### Pilot Panel Down Spiral

For cutting aluminum sheets, wall panels, plywood, chip boards, insulation sheathing and other synthetic boards.

- Pushes chips down while cutting to eliminate chip build-up and clogging
- Eliminates chipping and upward tearing of material
- Eliminates vibration and extends bit life

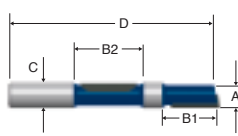


Item #	A. Cut Diameter	B. Flute Length	C. Shank Diameter	D. Overall Length
85183	1/4"	5/8"	1/4"	2-3/4"
85184	3/8"	3/4"	3/8"	3-1/8"
85185	1/2"	2-1/8"	1/2"	4-1/2"
85187	1/2"	1-1/4"	1/2"	3-13/16"

### Staggertooth with Center Pilot

Used for production cutting in aluminum and plywood sandwich panels and other layered materials such as windows, doors, and other openings.

- Center pilot guides the carbide tipped cutters along inner frame, typically found in manufactured housing applications

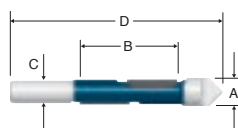


Item #	A. Overall Diameter	B1. Cutting Edge Lgth.	B2. Cutting Edge Lgth.	C. Shank Diameter	D. Overall Length
85406M	1/2"	2-13/16"	1-1/8"	1/2"	4-1/4"
85406MB50	1/2"	2-13/16"	1-1/8"	1/2"	4-1/4"

\* Bulk Item

### Staggertooth Pilot Panel Bit

Staggered flutes give excellent chip clearance and high feed rates. Used for production cutting of window, door and other openings in abrasive materials.



Item #	A. Cut Diameter	B. Flute Length	C. Shank Diameter	D. Overall Length
85408M	5/8"	2-1/4"	1/2"	4-3/4"

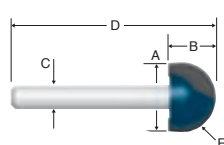


## Surface Forming Bits



### Carbide Tipped Core Box Bits

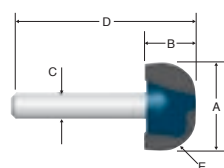
Micrograin bits for cutting rounded grooves used in a variety of applications including doors and columns.



Item #	A. Overall Diameter	B. Cutting Edge Length	C. Shank Diameter	D. Overall Length	E. Radius
85444M	1/4"	1/4"	1/4"	1-5/8"	1/8"
85445M	3/8"	1/4"	1/4"	1-1/2"	3/16"
85446M	1/2"	3/8"	1/4"	1-1/2"	1/4"
85447M	5/8"	7/16"	1/4"	1-5/8"	5/16"
85448M	3/4"	7/16"	1/4"	1-3/4"	3/8"

### Carbide Tipped Dish Carving Bits

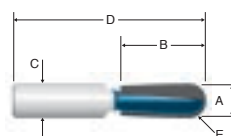
Micrograin bits used for removing large amounts of wood as in making trays, coasters, raised letter signs, etc.



Item #	A. Overall Diameter	B. Cutting Edge Length	C. Shank Diameter	D. Overall Length	E. Radius
<b>NEW!</b> 84310M	1-1/8"	5/8"	1/2"	2-5/8"	1/4"

### Carbide Tipped Core Box Bits – Two Flutes

Deeper cut round nose bits for cutting rounded grooves used in a variety of applications including doors and columns.



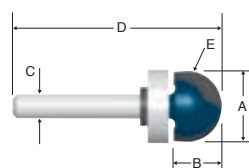
Item #	A. Overall Diameter	B. Cutting Edge Length	C. Shank Diameter	D. Overall Length	E. Radius
85449M	1/2"	1-1/4"	1/2"	2-3/4"	1/4"
<b>NEW!</b> 85456M	5/8"	1-1/4"	1/2"	2-3/4"	5/16"
85450M	3/4"	1-1/4"	1/2"	2-3/4"	3/8"
85451M*	1"	1-1/4"	1/2"	2-3/4"	1/2"

\* Control cut bit

### Top Bearing Mounted – Carbide Tipped Core Box Bits

Top bearing mounted bits ideal for templet cutting, grooving, lettering and plunge cutting from above and below the workpiece.

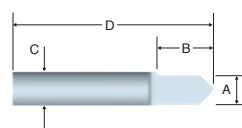
- Replacement collar 3 600 231 500
- Replacement set screw 3 603 401 506



Item #	A. Overall Diameter	B. Cutting Edge Length	C. Shank Diameter	D. Overall Length	E. Radius
85683M	1/2"	3/8"	1/4"	2"	1/4"
85684M	5/8"	7/16"	1/4"	1-5/8"	5/16"
85685M	3/4"	7/16"	1/4"	1-3/4"	3/8"

### Solid Carbide V-groove & Scoring Bit

Excellent for door-front grooving and scoring panel design in wood. Produces simulated paneling for walls, doors and furniture.

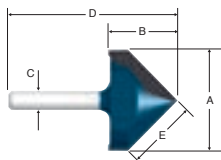


Item #	A. Overall Diameter	B. Cutting Edge Length	C. Shank Diameter	D. Overall Length	Bevel
85284	3/16"	1/2"	1/4"	2"	41°

## Surface Forming Bits

### Carbide Tipped V-groove & Scoring Bits

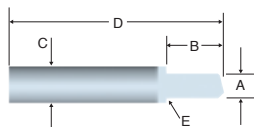
Micrograin bits ideal for door-front grooving, lettering and sign work. Features shear angle cutter geometry for smooth, efficient cutting.



Item #	A. Overall Diameter	B. Cutting Edge Length	C. Shank Diameter	D. Overall Length	E. Bevel
84300M	1/2"	5/8"	1/4"	1-3/4"	1/4" (45°)
84303M	5/8"	1/2"	1/2"	2"	7/16" (45°)
84306M	3/4"	5/8"	1/2"	2-1/8"	19/32" (45°)
85219M	9/16"	3/4"	1/4"	1-3/4"	3/8" (45°)
84309M	1"	5/8"	1/2"	2-1/4"	13/16" (45°)
85220M	1-1/4"	15/16"	1/4"	2-13/64"	7/8" (45°)

### Solid Carbide Veining Bits

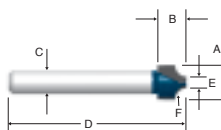
Provincial design veining bits are intended for recessed design veining in fine cabinet surfaces and used extensively for door front grooving.



Item #	A. Overall Diameter	B. Cutting Edge Length	C. Shank Diameter	D. Overall Length	E. Radius
85281M	1/8"	5/32"	1/4"	1-1/2"	1/16"
85282M	3/16"	25/64"	1/4"	1-1/2"	3/32"
85283M	1/4"	25/64"	1/4"	1-1/2"	1/8"

### Carbide Tipped Beading Bit

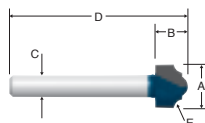
Micrograin bit used extensively for provincial design in doors.



Item #	A. Overall Diameter	B. Cutting Edge Lgth.	C. Shank Diameter	D. Overall Length	E. Small Diameter	F. Radius
85478M	3/8"	5/16"	1/4"	2"	3/16"	3/32"

### Carbide Tipped Classical Bits

Micrograin bits are used for beautiful, decorative grooving, adding a quality accent to any project. Also recommended for edge forming with a router guide.

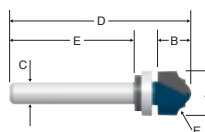


Item #	A. Overall Diameter	B. Cutting Edge Length	C. Shank Diameter	D. Overall Length	E. Radius
85467M	1/2"	7/16"	1/4"	2"	3/32"
85468M	3/4"	1/2"	1/4"	2-1/16"	9/64"

### Top Bearing Mounted – Carbide Tipped Classical Bits

Top bearing mounted bits are ideal for templet cutting, grooving, lettering and plunge cutting from above and below the workpiece. Rides against template for pattern routing.

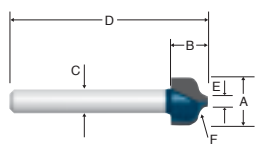
- Replacement collar 3 600 231 500
- Replacement set screw 3 603 401 506



Item #	A. Overall Diameter	B. Cutting Edge Length	C. Shank Diameter	D. Overall Length	E. Radius
85688M	1/2"	7/16"	1/4"	2"	3/32"
85689M	3/4"	1/2"	1/4"	2-1/16"	9/64"

### Carbide Tipped Ogee Bits

Micrograin bits add a graceful, symmetrically-balanced ogee cut for eye-pleasing appeal. Recommended for both grooving and edge-forming cuts.



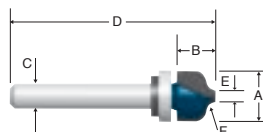
Item #	A. Overall Diameter	B. Cutting Edge Lgth.	C. Shank Diameter	D. Overall Length	E. Small Diameter	F. Radius
85461M	3/8"	5/16"	1/4"	2"	.123	1/16"
85462M	1/2"	3/8"	1/4"	2"	.157	5/64"
85463M	3/4"	1/2"	1/4"	2-1/8"	.249	9/64"
85464M	3/4"	1/2"	1/2"	2-3/4"	.256	9/64"

## Surface Forming Bits

### Top Bearing Mounted – Carbide Tipped Ogee Bits

Top bearing mounted bits are ideal for templet cutting, grooving, lettering and plunge cutting from above and below the workpiece.

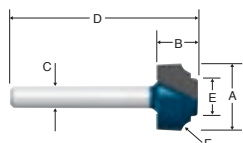
- Replacement collar 3 600 231 500
- Replacement set screw 3 603 401 506



Item #	A. Overall Diameter	B. Cutting Edge Lgth.	C. Shank Diameter	D. Overall Length	E. Small Diameter	F. Radius
85686M	1/2"	3/8"	1/4"	2"	.157	5/64"
85687M	3/4"	1/2"	1/4"	2-1/8"	.249	9/64"

### Carbide Tipped Traditional Bits

Micrograin bits ideal for wide, shallow, decorative cuts. The flat bottom gives a raised effect. Also recommended for edge forming.

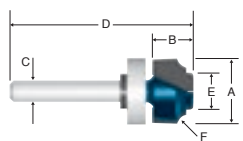


Item #	A. Overall Diameter	B. Cutting Edge Lgth.	C. Shank Diameter	D. Overall Length	E. Small Diameter	F. Radius
85474M	1/2"	13/32"	1/4"	2-1/16"	.270	5/64"
85475M	3/4"	7/16"	1/4"	2-1/16"	.338	9/64"

### Top Bearing Mounted – Carbide Tipped Traditional Bits

Ideal for templet cutting, grooving, lettering and plunge cutting from above and below the workpiece.

- Replacement collar 3 600 231 500
- Replacement set screw 3 603 401 506



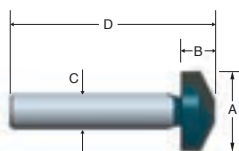
Item #	A. Overall Diameter	B. Cutting Edge Lgth.	C. Shank Diameter	D. Overall Length	E. Small Diameter	F. Radius
85690M	1/2"	13/32"	1/4"	2-1/16"	.270	5/64"
85691M	3/4"	7/16"	1/4"	2-1/16"	.338	9/64"

## Cabinetry/Joinery Bits



### Carbide Tipped Raised Panel Bit

Use a raised panel bit for cutting wide, shallow grooves in one pass for a raised panel effect.

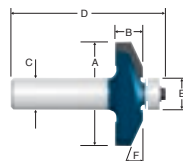


Item #	A. Overall Diameter	B. Cutting Edge Length	C. Shank Diameter	D. Overall Length
NEW! 85480M	1-1/8"	1/2"	1/2"	2-3/4"

### Carbide Tipped Raised Panel Bit with Bearing

Micrograin control cut bit used to create clean, simple lines to accentuate a surface.

- Recommended for use with a router table. Minimum recommended panel thickness is 3/4"

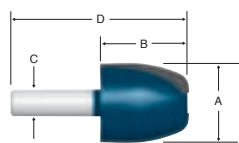


Item #	A. Overall Diameter	B. Cutting Edge Lgth.	C. Shank Diameter	D. Overall Length	E. Bearing Diameter	F. Angle
85583M	1-5/8"	1/2"	1/2"	2-3/8"	1/2"	25°

### Carbide Tipped Cove Vertical Panel Raiser Bit

Micrograin bit with a long, swooping radius (1/4" - 2-1/2") for creating beautiful panels.

- Recommended for use with a router table. Minimum recommended panel thickness is 3/4"



Item #	A. Overall Diameter	B. Cutting Edge Length	C. Shank Diameter	D. Overall Length
85708M	1-1/8"	1-5/8"	1/2"	3-1/8"

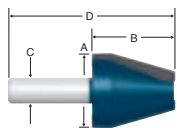


## Cabinetry/Joinery Bits

### Carbide Tipped Bevel Vertical Panel Raiser Bit

Micrograin control cut bit for creating raised panel doors and drawer faces.

- Recommended for use with a router table. Minimum recommended panel thickness is 3/4"

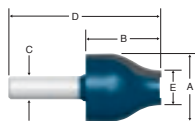


	A. Overall Diameter	B. Cutting Edge Length	C. Shank Diameter	D. Overall Length
Item #				
84520M	1-1/8"	1-5/8"	1/2"	3-1/8"

### Carbide Tipped Ogee Vertical Panel Raiser Bit

Micrograin bit used to create beautiful shadow lines for cabinet doors.

- Recommended for use with a router table. Minimum recommended panel thickness is 3/4"

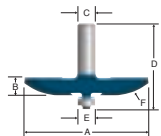


	A. Overall Diameter	B. Cutting Edge Length	C. Shank Diameter	D. Overall Length	E. Small Diameter
Item #					
85712M	1-3/16"	1-5/8"	1/2"	3-1/8"	7/16"

### Carbide Tipped Cove Raised Panel Cutter

Micrograin control cut bit used to create clean, simple lines to accentuate a surface.

- Recommended for use with a router table. Minimum recommended panel thickness is 3/4"

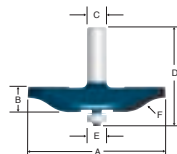


	A. Overall Dia.	B. Cutting Edge Lgth.	C. Shank Dia.	D. Overall Lgth.	E. Bearing Dia.	F. Radius	G. Cutting Width
Item #							
<b>NEW!</b> 85641M	3-3/8"	1/2"	1/2"	2-3/8"	1/2"	1-9/16"	1-7/16"

### Carbide Tipped Ogee Raised Panel Cutters

Micrograin bits produce raised panel cuts along straight and curved panel edges.

- These bits are not for use in hand-held routers. Use with a router table only. Minimum recommended panel thickness is 3/4"

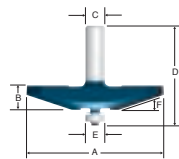


	A. Overall Dia.	B. Cutting Edge Lgth.	C. Shank Dia.	D. Overall Lgth.	E. Bearing Dia.	F. Radius	G. Cutting Width
Item #							
85638M	2-5/8"	5/8"	1/2"	2-1/2"	1/2"	3/4"	1-1/16"
85640M	3-3/8"	9/16"	1/2"	2-1/2"	1/2"	7/8"	1-7/16"

### Carbide Tipped Raised Panel Cutters

Micrograin bits produce raised panel cuts along straight and curved panel edges.

- These bits are not for use in hand-held routers. Use with a router table only. Minimum recommended panel thickness is 3/4"

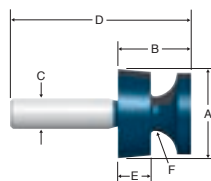


	A. Overall Dia.	B. Cutting Edge Lgth.	C. Shank Dia.	D. Overall Length	E. Bearing Dia.	F. Angle	G. Cutting Width
Item #							
85637M	2-3/4"	5/8"	1/2"	2-17/32"	1/2"	26°	1-1/8"
85639M	3-3/8"	1/2"	1/2"	2-3/8"	1/2"	15°	1-7/16"

### Carbide Tipped Doorlip Bit

Micrograin bit achieves a popular shaper-quality doorlip cut with a router.

- Recommended for use with a router table

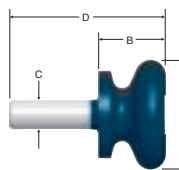


	A. Overall Diameter	B. Cutting Edge Lgth.	C. Shank Diameter	D. Overall Length	E. Radius
Item #					
85603M	1-9/16"	1"	1/2"	3"	3/8"

### Carbide Tipped Finger Pull Bit

Micrograin control cut bit creates easy open door or drawer edges that eliminate metal pulls and enhance the hardwood effect.

- Recommended for use with a router table

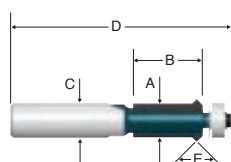


	A. Overall Diameter	B. Cutting Edge Length	C. Shank Diameter	D. Overall Length
Item #				
84540M	1-9/16"	7/16"	1/4"	2-1/4"

## Cabinetry/Joinery Bits

### Carbide Tipped Face Frame/Flush Trim, V-groove Bits

Micrograin bits used to flush face frame to cabinet side while at the same time cutting a V-groove down cabinet joint. Also used for creating a decorative V-groove cut.

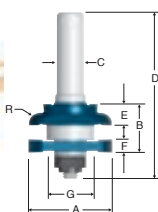
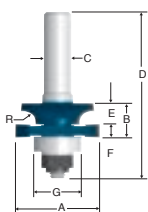


Item #	A. Overall Diameter	B. Cutting Edge Lgth.	C. Shank Diameter	D. Overall Length	E. Angle	Bearing Diameter
85646M	5/8"	1"	1/4"	2-1/2"	90°	1/2"
85647M	5/8"	1"	1/2"	3	90°	1/2"

### Carbide Tipped Beading Stile & Rail Bits

Micrograin bits with shear angle geometry, super-sharp cutting edges and close-tolerance manufacturing to ensure consistently smooth, tight-fitting joints.

- Recommended for use with a router table. Designed for 3/4" wood with a maximum wood thickness of 7/8"
- 85621M is a control cut bit

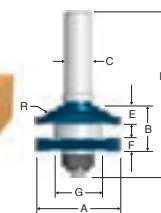
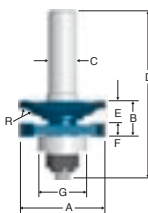


Item #	A. Overall Dia.	B. Cutting Edge Lgth.	C. Shank Dia.	D. Overall Length	E. Decorative Cut Depth	F. Kerf	G. Bearing Diameter	R. Radius
85621M	1-5/8"	5/8"	1/2"	3"	5/8"	1/4"	7/8"(22 mm)	7/32"
85622M	1-5/8"	57/64"	1/2"	3"	1-5/8"	1/4"	7/8"(22 mm)	1/2"
85620M	Beading stile and rail set includes 85621M and 85622M assemblies							

### Carbide Tipped Ogee Stile & Rail Bits

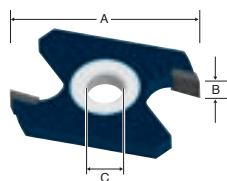
Micrograin bits with shear angle geometry, super-sharp cutting edges and close-tolerance manufacturing to ensure consistently smooth, tight-fitting joints.

- These bits are not for use in hand-held routers. Use with a router table only. Designed for 3/4" wood with a maximum wood thickness of 7/8"
- Both 85626M and 85627M assemblies are reversible. Either can be used to make both stile and rail cuts by order on the arbor. This requires one workpiece to be cut "face up" and the other workpiece "face-down"



Item #	A. Overall Dia.	B. Cutting Edge Lgth.	C. Shank Dia.	D. Overall Length	E. Decorative Cut Depth	F. Kerf	G. Bearing Diameter	R. Radius
85626M	1-5/8"	43/64"	1/2"	3"	13/32"	3"	7/8"(22 mm)	1/2"
85627M	1-5/8"	51/64"	1/2"	3"	17/64"	3"	7/8"(22 mm)	1/2"
85625M	Ogee stile and rail set includes 85626M and 85627M assemblies							

### Replacement Stile & Rail Cutters

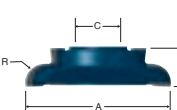


85630M

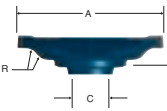
Use with all four assemblies.



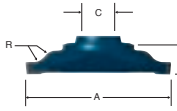
85623M



85624M



85628M



85629M

Item #	A. Overall Diameter	B. Cutting Edge Lgth.	C. Inside Diameter	R. Cutting Radius	Type
85623M	1-7/16"	25/64"	8 mm	27/64"	Beading
85624M	1-39/64"	13/32"	8 mm	7/16"	Beading
85628M	1-39/64"	17/64"	8 mm	13/32"	Ogee
85629M	1-5/8"	1-1/16"	8 mm	13/32"	Ogee
85630M	1-5/8"	1/4"	8 mm	N/A	

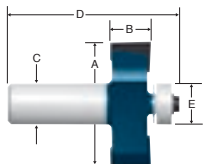


## Cabinetry/Joinery Bits

### Carbide Tipped Rabbeting Bits

Micrograin control cut bits for making rabbeting cuts without the use of a router guide.

- To increase the width of rabbet by 1/16" for 85218M and 85590M, purchase 3/8" diameter bearing 3 600 900 501 and dust shield 3 600 120 507

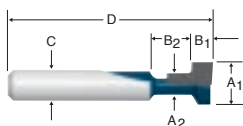


Item #	Rabbet Width	A. Overall Diameter	B. Cutting Edge Lgth.	C. Shank Diameter	D. Overall Length	E. Bearing Diameter
85218M	3/8"	1-1/4"	1/2"	1/4"	2"	1/2"
85590M	3/8"	1-1/4"	1/2"	1/2"	2-3/8"	1/2"
85614M	1/2"	1-3/8"	1/2"	1/4"	2"	1/2"
85615M	1/2"	1-3/8"	1/2"	1/2"	2-3/8"	1/2"

### Carbide Tipped Keyhole Bits

For plunge and slots cuts. Route mounting slots in picture frames and plaques.

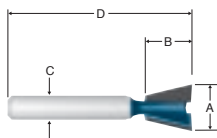
- 85608M is a carbide tipped bit
- 85078 is a high speed steel bit



Item #	A1. Large Diameter	A2. Small Diameter	B. Cutting Edge	C. Shank Diameter	D. Overall Length
85078	3/8"	3/16"	3/16"	1/4"	1-7/8"
85608M	3/8"	3/16"	3/8"	1/4"	1-1/2"

### Carbide Tipped Dovetail Bits

Micrograin bits for making dovetail joints.

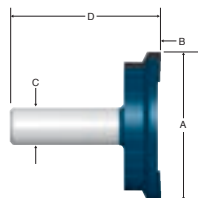


Item #	A. Overall Diameter	B. Cutting Edge Length	C. Shank Diameter	D. Overall Length	Degree
84706M	3/8"	3/8"	1/2"	2-1/2"	9
84700M	3/8"	3/8"	1/2"	2"	9
NEW! 84702M	3/8"	3/8"	3/8"	2"	9
84703M	1/2"	1/2"	1/4"	2"	14
84709M	1/2"	17/32"	1/2"	2-1/2"	14
85240M	17/32"	1/2"	1/4"	1-7/8"	15
84712M	5/8"	7/8"	1/2"	2-5/8"	7
NEW! 84710M	3/4"	3/4"	1/2"	3"	14
NEW! 84715M	3/4"	7/8"	1/2"	2-5/8"	7
NEW! 84705M	1"	1"	1/2"	2-3/4"	14

### Carbide Tipped Drawer Lock Joint Bit

Micrograin control cut bit for constructing durable drawer joints.

- Recommended for use with a router table

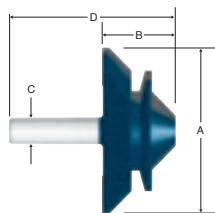


Item #	A. Overall Diameter	B. Cutting Edge Length	C. Shank Diameter	D. Overall Length
84512M	1"	1/2"	1/2"	1-5/16"

### Carbide Tipped Lock Miter Bit

Micrograin control cut bit for making right angle joints and glue joints.

- Recommended for use with a router table

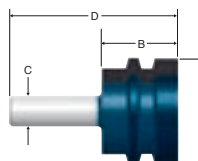


Item #	A. Overall Diameter	B. Cutting Edge Length	C. Shank Diameter	D. Overall Length
84508M	2-11/16"	1-3/16"	1/2"	2-5/8"

### Carbide Tipped Reversible Glue Joint Bit

Micrograin control cut bit used for making glue-ups and strong joints in door panels, tabletops and more.

- Recommended for use with a router table



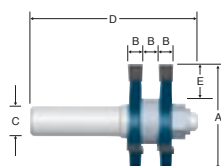
Item #	A. Overall Diameter	B. Cutting Edge Length	C. Shank Diameter	D. Overall Length
84505M	1-7/8"	1-3/32"	1/2"	2-5/8"

## Cabinetry/Joinery Bits

### Carbide Tipped Tongue & Groove Bits

Micrograin bits designed to cut tongue and grooves on 1/2" through 3/4" thick material. To cut the tongue, use the complete assembly; to cut the groove, remove one slotting cutter.

- Recommended for use with a router table
- For 1/4" replacement arbor assembly use 84626
- 84623M replacement cutter is 85610M; arbor is 84626
- 84624M replacement cutter is 85610M; arbor is 82815

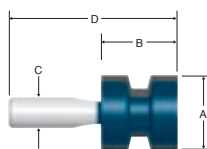


Item #	A. Overall Diameter	B. Cutting Edge Length	C. Shank Diameter	D. Overall Length	E. Decorative Cut Depth
84623M	1-7/8"	1/4"	1/4"	2-1/2"	1/2"
84624M	1-7/8"	1/4"	1/2"	2-1/2"	1/2"

### Carbide Tipped Wedge Tongue Bit

Micrograin control cut bit for making tongue style wedge cuts.

- Recommended for use with a router table

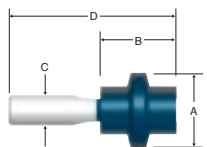


Item #	A. Overall Diameter	B. Cutting Edge Length	C. Shank Diameter	D. Overall Length
84509M	1-1/4"	1-1/4"	1/2"	2-3/4"

### Carbide Tipped Wedge Groove Bit

Micrograin control cut bit for making groove style wedge cuts.

- Recommended for use with a router table



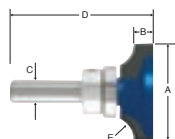
Item #	A. Overall Diameter	B. Cutting Edge Length	C. Shank Diameter	D. Overall Length
84510M	1-1/4"	1-1/4"	1/2"	2-3/4"

## Solid Surface Bits



### Carbide Tipped Under Round Bits

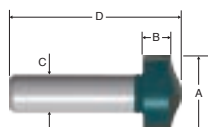
Micrograin bits used for cutting bottom-half of bullnose on 1" or 1-1/2" material without turning the material over.



Item #	A. Overall Diameter	B. Cutting Edge Length	C. Shank Diameter	D. Overall Length	E. Cutting Radius
NEW! 85692M	2-1/8"	3/4"	1/2"	2-7/8"	1/2"
NEW! 85693M	2-5/8"	1"	1/2"	3"	3/4"

### Carbide Tipped No-Drip Bit

Micrograin bit used to cut a no-drip edge where countertop and face material meet.

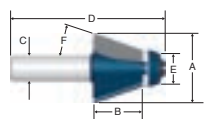


Item #	A. Overall Diameter	B. Cutting Edge Length	C. Shank Diameter	D. Overall Length
NEW! 85694M	1"	1/2"	1/2"	2-1/8"

### Carbide Tipped Bevel Bowl Bit

Micrograin bit for use when fabricating solid undermount bowls.

- Replacement ball bearing 3 600 200 514



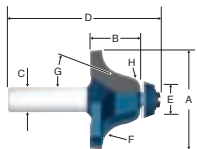
Item #	A. Overall Diameter	B. Cutting Edge Lgth.	C. Shank Diameter	D. Overall Length	E. Bearing Diameter	F. Cutting Width
85659M	1-1/4"	15/16"	1/2"	3"	3/4"	10°

## Solid Surface Bits

### Carbide Tipped Ogee Bowl Bit

Micrograin bit for use when fabricating solid undermount bowls.

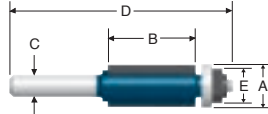
- Replacement ball bearing 3 600 200 514



Item #	A. Overall Dia.	B. Cutting Edge Lgth.	C. Shank Dia.	D. Overall Lgth.	E. Bearing Dia.	F. Cutting Angle	G. Angle	H. Radius
8562M	2-1/8"	1"	1/2"	3"	3/4"	1/2"	15°	1/2"

### Bowl & Sink Trim Bits

For sink cutouts. 85702M creates rough cut-out with 1/16" margin. 85701M creates flush finished cut.

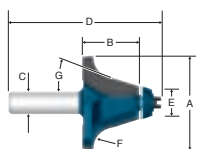


Item #	A. Overall Diameter	B. Cutting Edge Length	C. Shank Diameter	D. Overall Length	E. Small Diameter
NEW! 85701M	3/4"	1"	1/2"	3-1/2"	0° - Flush Trim
NEW! 85702M	3/4"	1"	1/2"	3-1/4"	10° - 1/16" Overhang

### Carbide Tipped Roundover Bowl Bits

Micrograin bit for use when fabricating solid undermount bowls.

- Replacement ball bearing 3 600 200 514
- Use 85695M for "1" material thickness
- Use 85696M for "1-1/2" material thickness

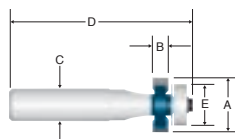


Item #	A. Overall Dia.	B. Cutting Edge Lgth.	C. Shank Dia.	D. Overall Lgth.	E. Bearing Dia.	F. Cutting Radius	G. Angle
85660M	2-1/8"	1"	1/2"	3"	3/4"	1/2"	18°
85661M	2-1/4"	1-1/4"	1/2"	3-1/4"	3/4"	1/2"	18°

### Carbide Tipped Inlay Bits

Micrograin bits for use when inlaying on solid surface and hardwood material.

- For bits with 1/16" inlay depth, use replacement ball bearings 3 600 905 504
- For bits with 1/8" inlay depth, use replacement ball bearings 3 600 905 505
- For bits with 3/16" inlay depth, use replacement ball bearings 3 600 905 506

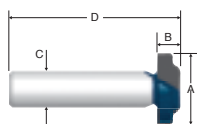


Item #	A. Overall Diameter	B. Cutting Edge Lgth.	C. Shank Diameter	D. Overall Length	E. Bearing Diameter
85650M*	7/8"	1/4"	1/2"	3"	1/2"
85653M*	7/8"	1/2"	1/2"	3-1/2"	1/2"
85656M*	7/8"	3/4"	1/2"	3-1/2"	1/2"

\*All bits include bearings for 1/16", 1/8" and 3/16" inlay depths

### Carbide Tipped Profiler Bit

Micrograin bit for use when mounting Corian® top mounted bowls to countertops. Use in conjunction with 85648M flush mount bowl bit. Also works as a groove-forming router bit with 82870 templet guide.

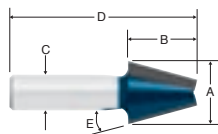


Item #	A. Overall Diameter	B. Cutting Edge Length	C. Shank Diameter	D. Overall Length
85670M	31/32"	5/8"	1/2"	2-3/8"

Corian® is a registered trademark of DuPont.

### Carbide Tipped Flush Mount Bowl Bit

Micrograin bit for use when mounting flush or recessed bevel-mount bowls to countertops. Use in conjunction with Bosch 30 mm templet guide 82870.



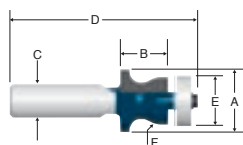
Item #	A. Overall Diameter	B. Cutting Edge Length	C. Shank Diameter	D. Overall Length	E. Angle
85648M	29/32"	15/16"	1/2"	2-1/2"	15°

## Solid Surface Bits

### Carbide Tipped No-Drip Bowl Bit with Bearing

Micrograin bits for use in fabricating and decorative edging on solid surface, composite and hardwood material.

- Replacement ball bearing 3 600 905 504

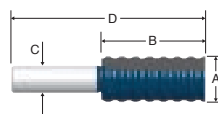


Item #	A. Overall Diameter	B. Cutting Edge Lgth.	C. Shank Diameter	D. Overall Length	E. Bearing Diameter	F. Cutting Radius
85664M	1"	7/8"	1/2"	3"	3/4"	5/16"
85665M	1"	1-1/8"	1/2"	3-1/4"	3/4"	5/16"

### Carbide Tipped A-line Edge Aligning Bit

Micrograin bit designed to precisely join all solid surfacing materials, hardwoods and other dense materials. Mating edges are aligned at the precise level without changing the router bit or router base. Unique trapezoidal design increases surface area for a stronger glue joint.

- Requires A-line sub-base 3 601 039 504



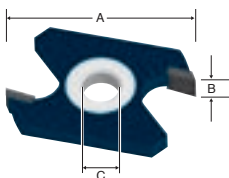
Item #	A. Overall Diameter	B. Cutting Edge Length	C. Shank Diameter	D. Overall Length
85649M	7/8"	1-7/8"	1/2"	2-33/64"

## Slotting/Arbor Cutters



### 2-wing Slotting Cutters

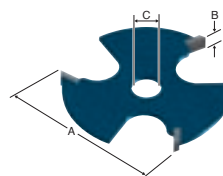
Micrograin control cut bits used for making slots for T-molding and weather stripping.



Item #	A. Overall Diameter	B. Cutting Edge Lgth.	C. Shank Diameter	Depth of Cut
85505M	1-3/16"	1/4"	1/4"	9/32"
85506M	1-5/8"	1/16"	1/4"	1/2"
85507M	1-5/8"	5/64"	1/4"	1/2"
85508M	1-5/8"	3/32"	1/4"	1/2"
85517M	1-7/8"	1/16"	5/16" (bore)	1/2"
85520M	1-7/8"	1/4"	5/16" (bore)	1/2"
85630M	1-5/8"	1/4"	8 mm	3/8"

### 3-wing Slotting Cutters

Micrograin bits used for making slots for T-molding and weather stripping.



Item #	A. Overall Diameter	B. Cutting Edge Lgth.	C. Shank Diameter	Depth of Cut
85526M	1-7/8"	1/16"	5/16" (bore)	1/2"
85527M	1-7/8"	5/64"	5/16" (bore)	1/2"
85528M	1-7/8"	5/64"	5/16" (bore)	1/2"
85529M	1-7/8"	1/8"	5/16" (bore)	1/2"
NEW! 85530M*	1-7/8"	5/32"	5/16" (bore)	1/2"
85609M	1-7/8"	3/16"	5/16" (bore)	1/2"
85610M	1-7/8"	1/4"	5/16" (bore)	1/2"

\*85530M is used for biscuit joint cutting.



### Slotting/Arbor Cutters

#### Arbors for Slotting Cutters

For use with 2-wing and 3-wing slotting cutters.



82805



82808



82810



82811

Item #	Arbor Dia.	Bearing Dia.	Length	Shank Dia.	For Use With	Used on Part No.
82811	5/16"	7/8"	3"	1/2"	3-wing slotting cutters	85520M, 85609M, 85610M
92813	5/16"	N/A	1-23/32"	1/4"	3-wing slotting cutters	85526M, 85527M, 85528M, 85529M, 92837
82815	8 mm	7/8" (22 mm)	3"	1/2"	2-wing slotting cutters	85520M
82805	1/4"	N/A	2"	1/4"	2-wing slotting cutters	85505M, 85506M, 85507M, 85508M
82808	1/4"	5/8"	1-29/32"	1/4"	2-wing slotting cutters	85505M, 85506M, 85507M, 85508M
82810	5/16"	7/8"	2-5/8"	1/4"	2-wing slotting cutters	85517M, 85520M, 92837
92812	1/4"	N/A	1-3/4"	1/4"	2-wing slotting cutters	85506M, 85507M, 85508M

### Router Bit Components



#### Flush-cutting Trim Saw Blades

Complete assembly for flush trimming. Replaceable blade. 92834 can be converted to self piloting saw by replacing assembly spacer with item# 3 600 900 514 or item# 3 600 900 525 ball bearing. It will not cut flush when self piloted.



Item #	A. Cutter Diameter	B. Cutter Thickness	C. Shank Diameter	D. Overall Length	Number of Teeth
92834	1-5/8"	3/64"	1/4"	N/A	20
92836**	1-5/8"	3/64"	1/4"	N/A	20

Replacement spacer 3 600 200 505

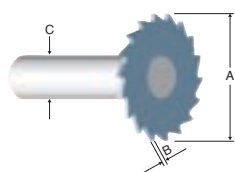
Replacement arbor 3 603 050 518

Replacement nut 3 603 345 501

\*\*Replacement blade

#### Flush-cutting Trim Saw

Solid carbide blade permanently mounted on a shank.



Item #	A. Cutter Diameter	B. Cutter Thickness	C. Shank Diameter	D. Overall Length	Number of Teeth
82800	3/4"	1/32"	1/4"	1-3/32"	18

#### Bearing Enlargers

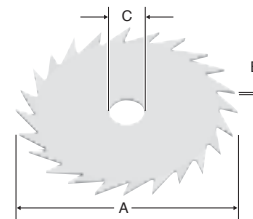
Use Bosch bearing enlargers for changing profiles, widths and rabbeting depths of ball bearing-piloted router bits with 3/16" O.D. pilots.



Item #	Inside Diameter	Outside Diameter
BE006	3/16"	3/4"
BE007	3/16"	7/8"
BE008	3/16"	1"
BE009	3/16"	1-1/8"
BE400	One each of BE006, BE007, BE008 and BE009	

#### Trim Saw Blade

High speed steel assembly.



Item #	A. Cutter Diameter	B. Cutter Thickness	C. Shank Diameter	D. Overall Length	Number of Teeth
92837*	2"	5/64"	5/16"	N/A	24

\*Use with arbor 92813 or 82810

\*Arbor size

#### Non-marring Bearings

Non-marring high precision bearings are specially engineered and fitted with sleeves to prevent scratching on all surfaces. Use with piloted router bits including laminate trim and edge forming bits.



Item #	Inside Diameter	Outside Diameter
NMB004	3/16"	1/2"
NMB005	1/4"	5/8"
NMB006	1/4"	3/4"
NMB300	One each of NMB004, NMB005 and NMB006	