

SALE NOW THROUGH MARCH 13<sup>TH</sup>



# Always the Lowest Prices GUARANTEED ..Period!



Your Best Choice for 72 Years Just Keeps Getting Better!

SALE HOURS: MONDAY THROUGH FRIDAY 9 – 6 PM • SATURDAY 9 – 5 PM • SUNDAY HOME WITH FAMILY



**FRIGIDAIRE**

**28 CU. FT. FRENCH DOOR BOTTOM MOUNT REFRIGERATOR**

- Large Door Bin Storage
- Purepour™ Water Filter
- #FRFS2823AS

Reg. \$2699  
**NOW ONLY \$1697!**

SAVE \$1002



**C A F É**  
DISTINCT BY DESIGN™

Get the Look!

Rewards curated for you by Café.

Receive up to a **\$3000 rebate\*** with the purchase of select Café appliance suite combinations.  
January 1 – June 30, 2024



**Speed Queen.**

SAVE UP TO **\$320!** ON PAIRS

**BUILT TO DO 25 YEARS WORTH OF LAUNDRY!**

**BEST WARRANTY IN THE INDUSTRY!**  
**7 YEAR** Full Parts & Labor, Limited on motor and cabinet  
**LIFETIME** Limited on Stainless Steel Wash Tub and Outer Drain Tub



**FRIGIDAIRE**

**24" BUILT-IN DISHWASHER**

- Complete Clean 5 Level Wash System
- Energy Saver Dry Option
- Fits up to 12 place settings
- #FDPC4221AS

Reg. \$479  
**NOW ONLY \$328!**

SAVE \$151

**FRIGIDAIRE 1/3 HP WASTE DISPOSAL**

- Stainless Steel Grinding System
- High-Torque GrindPro™ Magnet Motor
- #FDG31DMS

**NOW ONLY \$59!**



15" Undercounter Plug-in for Maker UNCS150PR1 • Matt White Door Panel Kit: CR15PW001L Hardware Kit: CQ0W1H1P02

## 0% INTEREST FOR 24 MONTHS\*

\*When paid in full on qualifying purchases with select financing companies made now through March 13th, 2024. Interest will be charged to your account from the purchase date if the promotional balance, including optional charges, is not paid in full within 24 months or if you make a late payment. Equal Monthly Payments Required. See back page for details.



**SONY 4K ULTRA HD TV**

**50" X85K Smart LED 4K UHD TV with HDR**

- Native Refresh Rate: 120Hz
- Google TV Interface
- #KD50X85K

**NOW ONLY \$699!**



**SAMSUNG 4K ULTRA HD TV**

**65" CLASS QLED Smart TV**

- Quantum Processor
- 4K Upscaling Optimization
- #QN65Q60C

PLUS \$100 INSTANT CASH towards SURROUND SOUND SYSTEM of YOUR CHOICE!

SAVE \$100

**NOW ONLY \$799!**



**SONY 4K ULTRA HD TV**

**75" LED 4K HDR Google TV**

- Billions of accurate colors
- Voice Search with Google Assistant™
- #XR75X90L

PLUS \$200 INSTANT CASH towards SURROUND SOUND SYSTEM of YOUR CHOICE!

SAVE \$300

**NOW ONLY \$1599!**



**SAMSUNG 4K ULTRA HD TV**

**75" Class Neo QLED Smart TV**

- Quantum Matrix Technology
- Motion Xcelerator Turbo Pro
- #QN75QN95C

PLUS \$300 INSTANT CASH towards SURROUND SOUND SYSTEM of YOUR CHOICE!

SAVE \$1200

**NOW ONLY \$2799!**



**SONOS**

**Sonos Arc Soundbar**

- Dolby Atmos • Apple Airplay 2
- Voice Enabled
- Touch controls
- #ARCG1US1

**NOW ONLY \$899!**



**SONOS**

**Sonos Move 2 Smart Speaker**

- Set up w/WiFi, a powerhouse for outdoor entertaining and large rooms®
- #MOVE2

**NOW ONLY \$449!**

## Earn up to an Additional \$500 In-Store Gift Card\*\*

\*\*with qualifying furniture purchase. See store for details.



**GENEVA Collection**

- Recliner

**LeatherItaliausa** SINCE 1987

Reg. \$499  
**NOW ONLY \$287!**  
SAVE \$212



**MEGA MOTION**

Products for BETTER LIVING

- For smaller users

Reg. \$969  
**NOW ONLY \$799<sup>95</sup>!**  
SAVE \$169<sup>95</sup>



**Sealy**

UP TO **\$200 BONUS JEFF LYNCH IN-STORE GIFT CARD!** with purchase of select Sealy models

**CROWN JEWEL COLLECTION SECOND AND PARK Firm Tight Top Queen Mattress**

SAVE \$322  
**NOW ONLY \$377** Reg. \$699

**15 BILLION DOLLAR BUYING POWER!** | **WE SERVICE WHAT WE SELL!** | **TURN KEY INSTALLATION!** | **SAME DAY EXPRESS DELIVERY!** | **ECO-FRIENDLY**  
• FREE RECYCLING • FREE HAUL AWAY



**JEFF LYNCH**

Appliances ■ Electronics ■ Bedding ■ Furniture

ALWAYS THE LOWEST PRICE **GUARANTEED** PERIOD.

**YOUR BEST CHOICE FOR 72 years**

[www.jefflynch.com](http://www.jefflynch.com)

17 Roper Mountain Rd. • Greenville, SC 29607 • (864) 268-3101  
HOURS: Monday-Friday 9am-6pm • Saturday 9am-5pm • Sunday Home With Family!



UP TO **\$300 Instant Cash** towards the **Sound System of Your Choice** with any TV 65" or larger!

**ALWAYS THE LOWEST PRICES GUARANTEED!**  
GOING ON NOW THROUGH MARCH 13TH

LED 4K SMART TVS



**32" Smart Full HD TV**  
• 1080p Resolution • Micro Dimming Pro  
# UN32N5300  
**NOW ONLY \$229!**



**43" 4K UHD Smart TV** # QN43Q60C  
• Edge-lit Dual LED Backlight  
• Motion Xcelerator  
**NOW ONLY \$449!**



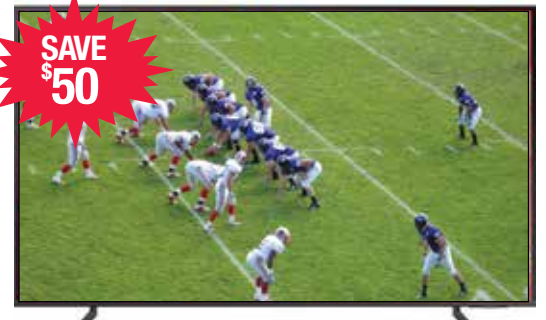
**65" LED 4K UHD Smart HDR TV**  
• Motionflow Technology  
• 4K HDR processor X1™  
#KD65X85K  
**NOW ONLY \$919!**



**75" UHD 4K Smart TV**  
• True-to-life color  
• Motion Xcelerator  
# UN75CU7000  
**NOW ONLY \$577!**



**55" The Frame 4K QLED TV**  
• Quantum Processor 4K  
# QN55LS03B  
**NOW ONLY \$999!**



**55" QLED Smart TV**  
• ConnectShare™  
• Motion Xcelerator  
# QN55Q60C  
**NOW ONLY \$699!**



**55" LED 4K HDR Google TV**  
• Billions of accurate colors  
• Google TV with voice search  
#XR55X90L  
**NOW ONLY \$1049!**



**65" LED 4K HDR TV**  
• Google TV™ with Google Assistant™  
• Supports Apple Airplay. 1, 15  
#XR65X90L  
**NOW ONLY \$1099!**



**65" 4K UHD Smart QLED TV**  
• Quantum Matrix with Mini LEDs  
• Quantum HDR  
# QN65QN85C  
**NOW ONLY \$1299!**



**65" 4K UHD Smart webOS22 with ThinQ AI TV**  
• a7 Gen5 AI Processor 4K  
• Quantum Dot NanoCell Color Technology  
# 65QNED85UQA  
**NOW ONLY \$1199!**



**75" 4K UHD Smart TV**  
• Motionflow™ XR 240  
• High Dynamic Range  
# KD75X85K  
**NOW ONLY \$1299!**



**75" 4K QLED 4K Smart TV**  
• Super Precise LEDs  
• Quantum HDR+ 4K Resolution  
# QN75Q80C  
**NOW ONLY \$1699!**



**75" 4K UHD Smart webOS 22 w/ ThinQ AI TV**  
• Mini-LED Backlighting  
• Precision Dimming  
# 75QNED85UQA  
**NOW ONLY \$1699!**

OLED TVS



**55" C3 Evo OLED TV**  
• Easy-access gaming controls  
• Dolby Atmos® & Vision  
#OLED55C3PUA  
**NOW ONLY \$1399!**



**65" C3 Evo OLED TV**  
• Easy-access gaming controls  
• Dolby Atmos® & Vision  
#OLED65C3PUA  
**NOW ONLY \$1599!**



**85" Smart QLED 4K Q80C**  
• Wide Viewing Angle  
• Real Depth Enhancer  
• Motion Xcelerator Turbo+  
# QN85Q80C  
**NOW ONLY \$2199!**



**SONY Blu-ray Disc™ Player**  
• Built-in Wi-Fi  
• Smart Capable  
# BDPBX370  
**NOW ONLY \$89!**



**SONY Streaming 4K Ultra HD Hi-Res Audio Wi-Fi Built-In Blu-Ray Player**  
• 4K Streaming Contents  
• Wireless Connectivity  
# UBXP700/M  
**NOW ONLY \$259!**

**SAMSUNG**

**Freestyle Projector**  
• Optimizes screen size and auto-focuses plus access your streaming apps & favorite playlist, use voice assistants.  
#SP-LSP3BLAXZA  
**SAVE \$200 NOW ONLY \$599!**



**SAMSUNG Powered Sound Bar with Wireless Subwoofer**

• Feel surrounded with O-Symphony sound  
• Dolby Atmos  
#HW-Q990C



**NOW ONLY \$1399!**

**SAVE \$500**



**LG SC9S Sound Bar**  
• Immersive Listening Experience with IMAX® ENHANCED  
**NOW ONLY \$799!**

**SAVE \$200**

**HOME THEATER**



**CUSTOM FABRIC PACIFICO MANUAL THEATER SEATING**

**PALLISER**

**FABRIC STARTING AT \$797!**



# America's Best Washer & Dryer Brands at The Lowest Prices Guaranteed!



**SAVE \$504 ON THE PAIR**

LIMITED QUANTITIES!  
Reg. \$799 Each  
**NOW ONLY \$547! EACH**



**4.5 CU. FT. TOP LOAD WASHER**  
• Large Load Capacity  
• Deep Fill  
# MW4505MW

**7.0 CU. FT. ELECTRIC DRYER**  
• Heavy-Duty Motor  
• Wrinkle Control Option  
# MED4500MW



**SAVE UP TO \$320! ON PAIRS**

**Speed Queen**  
**BUILT TO DO 25 YEARS WORTH OF LAUNDRY!**  
**BEST WARRANTY IN THE INDUSTRY!**  
**7 YEAR** Full Parts & Labor, Limited on motor and cabinet  
**LIFETIME** Limited on Stainless Steel Wash Tub and Outer Drain Tub



**SAVE \$402 ON THE PAIR**

Reg. \$749 Each  
**NOW ONLY \$548! EACH**

**LG** Life's Good  
**4.1 CU. FT. ULTRA LARGE CAPACITY TOP LOAD WASHER**  
• 4-Way™ Agitator  
• SlamProof® Glass Lid  
• Deep Fill Option  
• Intelligent Electronic Controls  
# WT6105CW

**7.3 CU. FT. ELECTRIC DRYER**  
• Sensor Dry  
• FlowSense™ Duct Clogging & Lint Filter Indicators  
# DLE6100W



**SAVE \$442 ON THE PAIR**

LIMITED QUANTITIES!  
Reg. \$849 Each  
**NOW ONLY \$628! EACH**

**Whirlpool**  
**4.2 CU. FT. FRONT LOAD WASHER**  
• 8 Wash Cycles  
• Adaptive Wash Technology  
# WFW75WEFW

**7.4 CU. FT. ELECTRIC DRYER**  
• Wrinkle Shield Plus  
• Eco Boost  
# WED75HEFW



**SAVE \$302 ON THE PAIR**

Reg. \$899 Each  
**NOW ONLY \$748! EACH**

**LG** Life's Good  
**4.5 CU. FT. FRONT LOAD WASHER**  
• 6Motion™ Technology  
• ColdWash™ Technology  
• Direct Drive Motor 10-Year Limited Warranty  
# WM3400CW

**7.4 CU. FT. ELECTRIC DRYER**  
• Sensor Dry  
• FlowSense™ Duct Clogging Indicator  
• ENERGY STAR® Certified  
# DLE3400W



**SAVE \$950 ON THE PAIR**

**ALL NEW!** Exclusive smart boost technology for stain removal

**Electrolux**

**4.4 CU. FT. FRONT LOAD WASHER**  
• SmartBoost™ Stain Remover  
• Technology Steam # ELFW7637AT

**8.0 CU. FT. LARGE CAPACITY ELECTRIC DRYER**  
• Predictive Dry  
• Perfect Steam™ Wrinkle Release Option # ELFE7637AT  
Shown on optional pedestals

**SAVE UP TO \$300 PER YEAR IN ENERGY / WATER SAVINGS!**

## 0% INTEREST FOR 24 MONTHS\*

\*When paid in full on qualifying purchases with select financing companies made now through March 13th, 2024. Interest will be charged to your account from the purchase date if the promotional balance, including optional charges, is not paid in full within 24 months or if you make a late payment. Equal Monthly Payments Required. See back page for details.

## Best Selection of Refrigerators at the Lowest Prices Ever!



**FRIGIDAIRE**  
**25.5 CU. FT. SIDE-BY-SIDE REFRIGERATOR**  
• EasyCare Stainless Steel  
• External Ice and Water Dispenser  
# FFSS2615TS

**SAVE \$552**  
LIMITED QUANTITIES  
Reg. \$1499  
**NOW ONLY \$947!**



**KitchenAid**  
**26.8 CU. FT. REFRIGERATOR WITH EXTERIOR ICE & WATER DISPENSER**  
• EXTENDFRESH System monitors refrigerator & freezer temps  
• FRESHCHILL Full-Width Pantry with adjustable temp settings  
# KRFF577KPS

**SAVE \$1001**  
Reg. \$3699  
**NOW ONLY \$2698!**



**LG** Life's Good  
**30 CU. FT. SMART REFRIGERATOR WITH CRAFT ICE™**  
• Door-in-Door® Full-Convert™ drawer 5 temp settings  
• Tall Ice & Water Dispenser® with Measured Fill  
# LRMD33006S

**SAVE \$601**  
Reg. \$3599  
**NOW ONLY \$2998!**



**LG** Life's Good  
**20 CU. FT. TOP-FREEZER REFRIGERATOR**  
• Humidity-controlled crispers keep produce fresh  
• Rated Energy Star  
# LTCS20020W

Reg. \$777  
**NOW ONLY \$698!**



**Whirlpool**  
**25 CU. FT. SIDE-BY-SIDE REFRIGERATOR**  
• Stainless Steel  
• Gallon Door Bins  
• SpillGuard Glass Shelves  
# ED5FV6XWS

Reg. \$1499  
**NOW ONLY \$1097!**



**LG** Life's Good  
**27 CU. FT. SIDE-BY-SIDE REFRIGERATOR**  
• Smooth Touch Ice Dispenser  
• Multi-Air Flow™ System  
# LRSXS2706V

Reg. \$1665  
**NOW ONLY \$1148!**



**GE APPLIANCES**  
**25.6 CU. FT. FRENCH DOOR REFRIGERATOR**  
• Fingerprint resistant stainless  
• Space-saving icemaker  
• LED lighting  
# GFE26JYMFS

Reg. \$2699  
**NOW ONLY \$1697!**



**C A F E** DISTINCT BY DESIGN™  
**27.8 CU. FT. 4-DOOR FRENCH-DOOR REFRIGERATOR**  
• LED Light Wall  
• Ice and Water Dispenser  
# CVE28DP2NS1

Reg. \$2399  
**NOW ONLY \$1898!**



**LG** Life's Good  
**28 CU. FT. FRENCH DOOR REFRIGERATOR**  
• Tall Ice & Water Dispenser  
• SlimSpacePlus Ice System  
• Door Cooling+  
# LRFS28XBS

Reg. \$2399  
**NOW ONLY \$1898!**



**FRIGIDAIRE**  
1/3 HP WASTE DISPOSAL  
• Stainless Steel Grinding System  
• High-Torque GrindPro™ Magnet Motor  
#FFD31DMS  
**NOW ONLY \$59!**

**FRIGIDAIRE**  
1/2 HP WASTE DISPOSAL  
• Easy Fit Design  
• High-Torque GrindPro™ Magnet Motor  
#FFD501DMS  
**NOW ONLY \$99!**

**MOEN**  
3/4 HP WASTE DISPOSAL  
• Continuous Feed  
• Universal Xpress Mount™  
#GX575C  
**NOW ONLY \$139!**

**MOEN**  
1 HP VORTEX™ MOTOR WASTE DISPOSAL  
• Universal Xpress Mount™  
• SoundSHIELD™ Design  
#GX100C  
**NOW ONLY \$279!**

**FRIGIDAIRE**  
24" BUILT-IN DISHWASHER  
• Enhanced drying with MaxDry™  
• Skip Pre-rinsing DishSense® Sensor Technology  
• Sanitize Option  
# FDPH4316AS  
Reg. \$629  
**NOW ONLY \$398!**

**LG**  
Life's Good  
24" BUILT-IN DISHWASHER  
• QuadWash™ System  
• 15 Place Settings  
• Dynamic Dry™  
# LDFN3432T  
Reg. \$799  
**NOW ONLY \$548!**

**BOSCH**  
Invented for life  
24" BUILT-IN DISHWASHER  
• PrecisionWash® with sanitize option  
• Includes 3rd rack  
#SHXM4AY55N  
Reg. \$899  
**NOW ONLY \$697!**

WI-FI ENABLED HOME CONNECT™!  
**BOSCH**  
Invented for life  
24" BUILT-IN DISHWASHER  
• Prevent leaks with AquaStop®  
• Only 50 dBA!  
# SHE3AEM2N  
**NOW ONLY \$547!**

**GE APPLIANCES**  
24" TALL TUB BUILT-IN DISHWASHER  
• Dry Boost™  
• Steam + Sani  
• Water Leak Sensor  
# GDF535PSRSS  
Reg. \$649  
**NOW ONLY \$428!**

**Whirlpool**  
24" BUILT-IN DISHWASHER  
• 3rd Rack  
• Adjustable 2nd rack  
• Fan Drying Technology  
# WDT730HAMZ  
Reg. \$829  
**NOW ONLY \$498!**

**KitchenAid**  
24" BUILT-IN DISHWASHER  
• Stainless Steel Interior  
• Express Wash Cycle  
• Quiet cleaning 39 dBA  
# KDFE204KPS  
Reg. \$1149  
**NOW ONLY \$748!**

**FRIGIDAIRE**  
FREEZER event  
**SAVE OVER 30%**  
on Select Frigidaire Freezers

**GE APPLIANCES**  
7.0 CU. FT. CHEST FREEZER  
• Garage Ready  
• Power Outage Promise  
# FCM75STWW  
LIMITED QUANTITIES  
**NOW ONLY \$337!**

**FRIGIDAIRE**  
1.6 CU. FT. OVER-THE-RANGE MICROWAVE  
• Stainless Steel  
• Cooktop LED Lighting  
# FFMV1645TS  
Reg. \$329

**FRIGIDAIRE**  
30 IN. FREESTANDING ELECTRIC RANGE  
• One-Touch Self Clean  
• Quick Boil  
• Extra-Large Element  
• SpaceWise® Expandable Elements  
# FFEF3054TS  
Reg. \$1378

**BUY THE SET NOW ONLY \$998!**

**GET COOKING - WITH A - POWER PAIR**

**GREAT SAVINGS LG® Microwave and Range!**

**LG**  
Life's Good  
1000-Watt Microwave  
• EasyClean™ Interior  
• Energy Savings Key  
# LMV1764ST  
Reg. \$279  
**NOW ONLY \$227!**

**30" Slide-In Smart Wi-Fi Enabled Electric Range**  
• 6.3 cu ft. Capacity, EasyClean® + Self Clean Oven  
• InstaView® Window  
• ProBake Convection® with Air Fry # LSEL6335F  
Reg. \$1999  
**RANGE NOW ONLY \$1298!**

**FRIGIDAIRE**  
13 CU. FT. UPRIGHT FREEZER  
• Power Outage Assurance  
• EvenTemp™ Cooling System  
# FFFU13F2VW  
LIMITED QUANTITIES  
Reg. \$849  
**NOW ONLY \$598!**

**FRIGIDAIRE**  
20 CU. FT. UPRIGHT FREEZER  
• EvenTemp™ Cooling System  
• Door Ajar and High Temp Alarm  
# FFUE2022AW  
LIMITED QUANTITIES  
Reg. \$1099  
**NOW ONLY \$798!**

**FRIGIDAIRE**

Save \$3804!  
plus \$500 Mail In Rebate  
**= \$4304 Total Savings!**

**FRIGIDAIRE PROFESSIONAL 4-PIECE PACKAGE:**

- 21.4 Cu. Ft. Counter-Depth 4-Door French Door Refrigerator #PRMC2285AF
- 30" Front Control Electric Range with Air Fry #PCFE3078AF
- 1.9 Cu. Ft. Over-the Range Microwave with Air Fry #PMOS1980AF
- 24" Stainless Steel Tub Built-In Dishwasher with CleanBoost™ #PDSH4816AF

**BOSCH**  
Invented for life

**21.6 CU. FT. FRENCH DOOR BOTTOM MOUNT REFRIGERATOR**  
• Filtered ice and Water  
• 2-Tiered Freezer Drawers  
• MultiAirFlow™ Cooling System  
# B36CD50SNS  
See store for details.

**30" BUILT-IN GAS COOK TOP**  
• Heavy-Duty Automatic Electronic Re-ignition  
• 5 Burners  
# NGM8055UC

**30" SINGLE ELECTRIC WALL OVEN**  
• 4.6 cu. ft. Thermal Oven • Bread Proofing  
• Kitchen Timer • Heavy-Duty Metal Knobs  
# HBL5351UC

**ALWAYS THE LOWEST PRICES GUARANTEED!**  
GOING ON NOW THROUGH MARCH 13TH





# has **ENDLESS** Kitchen Package options!



## SAVE BIG on CAFÈ 4 Piece Package



**PLUS \$400 MAIL IN REBATES!**

**SAVE \$1395!**

**27.8 CU. FT. 4 DOOR FRENCH DOOR REFRIGERATOR**  
 • Multiflow Air System  
 • WiFi Connect  
 #CVE28DP2NS1

**30" SMART SLIDE IN RANGE**  
 • Radiant and Convection Range  
 • WiFi Connect  
 #CES750P2MS1

**1.7 CU. FT. OVER-THE-RANGE MICROWAVE**  
 • Vent Fan  
 • 950 Watts  
 # CVM517P2RS1

**24" BUILT-IN DISHWASHER**  
 • Ultra Wash & Dry  
 • Adjustable Upper Rack  
 #CDT845P2NS1

## SAVE BIG on LG's Stainless Steel 4 Piece Package



**SAVE \$1704!**



**30 CU. FT. SMART WI-FI ENABLED REFRIGERATOR WITH CRAFT ICE™ MAKER**  
 • Tall Ice & Water Dispenser® with Measured Fill  
 # LRMS3006S

**30" ELECTRIC SINGLE OVEN RANGE**  
 • InstaView® Window  
 • EasyClean®  
 # LSEL6335F

**2.1 CU. FT. OVER-THE-RANGE MICROWAVE**  
 • Sensor Cook  
 • Auto Cook Presets  
 # MVEL2137F

**24" BUILT-IN DISHWASHER**  
 • QuadWash® Pro  
 • Dynamic Heat Dry™  
 • TrueSteam®  
 # LDTH7972Ss

## 0% INTEREST FOR 24 MONTHS\*

\*When paid in full on qualifying purchases with select financing companies made now through March 13th, 2024. Interest will be charged to your account from the purchase date if the promotional balance, including optional charges, is not paid in full within 24 months or if you make a late payment. Equal Monthly Payments Required. See back page for details.

## SAVE BIG on Frigidaire's Stainless Steel 4 Piece Package



**SAVE \$1508**

**PLUS \$400 IN BONUS REBATES!**

**ALL 4 PIECES! NOW ONLY \$2398! MSRP \$3906**

## FRIGIDAIRE

**25.6 CU. FT. SIDE-BY-SIDE REFRIGERATOR**  
 • EvenTemp™ Cooling System  
 • Fresh Storage Crispers  
 # FRSS2623AS

**1.8 CU. FT. OVER-THE-RANGE MICROWAVE**  
 • Cooktop LED Lighting  
 • Interior LED Lighting  
 # FFMV1846VS

**30" ELECTRIC FREESTANDING RANGE**  
 • Quick Boil  
 • Store-More™ Drawer  
 # FCRE3052AS

**24" BUILT-IN DISHWASHER**  
 • Heated Drying System  
 • Fits up to 14 Place Settings  
 # FDPC4221AS

## KitchenAid®

CUSTOMIZE YOUR COLLECTION AND UNLOCK REBATES UP TO

**\$3000\***

ON ALL KITCHENAID® MAJOR APPLIANCES VIA A PREPAID MASTERCARD® BY MAIL

January 1–June 30, 2024



\*See Store for details.

MAKE IT YOUR OWN





**BUY MORE, SAVE MORE!**  
**SAVE UP TO \$1,200!**

with purchase of qualifying appliances.  
See store for details.



January 1, 2024 - May 15, 2024



**THE INNOVATION REBATE**

RECEIVE UP TO A  
**\$2,000\***

REBATE WITH THE PURCHASE  
OF SELECT GE PROFILE™  
APPLIANCE SUITE COMBINATIONS

\*Offer valid thru 06/30/24 see store for full details.

**The RIGHT Kitchen Package  
is WAITING!**



*First we saved.*  
**THEN, WE SAVORED.**

**SAVE UP TO  
20% WITH**

**★  
ONE - TWO - FREE®**  
SALES EVENT

*The Ultimate* **GIFT  
WITH PURCHASE**

Feed your culinary ambition and save up to \$8,346. Buy an eligible Thermador cooking package and select your complimentary dishwasher. Add refrigeration and choose another gift, including newly added under counter refrigeration. Embrace your opportunity to cook without limits.

*Choose your gift at*  
**THERMADOR.COM/ONE-TWO-FREE**



**WOLF SUB#ZERO COVE**

**FULL SUITE SAVINGS**



\*All products purchased on the same invoice qualify for Sub-Zero Care Plus (excluding dishwashers, coffee systems, outdoor grills, side burners, and burner modules).\*\*\$1,000 rebate for purchasing a qualifying package, plus an additional \$250 for each product as a qualifying add-on, up to a total maximum rebate of \$2,500. See store for details

Get **3**  
additional years  
of **PROTECTION\***  
for extra peace  
of mind

OR  
QUALIFY  
FOR UP TO **\$2,500  
REBATE\*\***

**NOW OPEN!** Come experience our **NEW Living Kitchen**  
**NOW!** Exclusive to the Upstate!



# Earn up to an Additional **\$500** In-Store Gift Card\*\*

\*\*with qualifying furniture purchase. See store for details.

## GREATEST SELECTION Of Casual & Formal Furniture in the Upstate

OVER 100 RECLINERS TO CHOOSE FROM OF THE BEST BRANDS

MANUAL RECLINERS



**LeatherItalia** USA  
SINCE 1987

**GENEVA** Collection

- Recliner

Reg. \$499  
**NOW ONLY \$287!**  
SAVE \$212



**PRIMO** Collection

- Recliner
- Large Sitting area in smaller frame

Reg. \$679  
**NOW ONLY \$449!**  
SAVE \$230



**ESPRIT** Collection

- Leather Rocker Recliner

Reg. \$879  
**NOW ONLY \$699<sup>95</sup>!**  
SAVE \$179<sup>95</sup>



**FLEXSTEEL** HOME

**WOODLAWN** Collection

- Swivel Gliding Recliner
- 250 fabric options
- Swivels full 360°

Reg. \$1049  
**NOW ONLY \$899<sup>95</sup>!**  
SAVE \$149<sup>95</sup>



**England**

**ENGLAND** Collection

- Optional Power Upgrade

Reg. \$1099  
**NOW ONLY \$949<sup>95</sup>!**  
SAVE \$149<sup>95</sup>



**FLEXSTEEL** HOME

**YUKON** Collection

- Triple Pillow-back Cushion for Extreme Comfort!
- 250 fabric options

Reg. \$1099  
**NOW ONLY \$959<sup>95</sup>!**  
SAVE \$139<sup>95</sup>



**HOOKEER** FURNITURE

**STARK** Collection

- Leather
- Manual push-back

Reg. \$1499  
**NOW ONLY \$1299<sup>95</sup>!**  
SAVE \$199<sup>95</sup>



**HOOKEER** FURNITURE

**RYLEA** Collection

- Aspen Hearthstone Leather

Reg. \$1899  
**NOW ONLY \$1649<sup>95</sup>!**  
SAVE \$249<sup>95</sup>

POWER RECLINERS



**FRONT ROW** Collection

- Power Recliner with Power Headrest

Reg. \$929  
**NOW ONLY \$799<sup>95</sup>!**  
SAVE \$129<sup>95</sup>

Available with or without Power.



**ALLSTAR** Collection

- Power Recliner
- Optional SoCozi Heat & Air Massage

Reg. \$999  
**NOW ONLY \$879<sup>95</sup>!**  
SAVE \$119<sup>95</sup>



**JITTERBUG** Collection

- Power Recliner
- All leather with power headrest

Reg. \$1499  
**NOW ONLY \$1099<sup>95</sup>!**  
SAVE \$399<sup>95</sup>



**hi-rock**

**SAVANNAH** Collection

- Power Recliner
- All leather with power headrest

Reg. \$1599  
**NOW ONLY \$899<sup>95</sup>!**  
SAVE \$699<sup>95</sup>



**MARVEL** Collection

- Power Recliner
- Wall Hugger with Power Headrest

Reg. \$929  
**NOW ONLY \$1149<sup>95</sup>!**  
SAVE \$299<sup>95</sup>



**PALLISER**

**TORRINGTON** Collection

- Swivel Power Recliner

Reg. \$1999  
**NOW ONLY \$1499<sup>95</sup>!**  
SAVE \$499<sup>95</sup>



**PALLISER**

**ZERO GRAVITY RECLINER**

Reg. \$1999  
**NOW ONLY \$1569!**  
SAVE \$430

ROCKER RECLINERS/GLIDERS



**FLEXSTEEL** HOME

**CATALINA** Collection

- Power Recliner with Power Headrest

Reg. \$1329  
**NOW ONLY \$1099<sup>95</sup>!**  
SAVE \$229<sup>95</sup>



**Flicker** Collection

- Extra padded headrest for comfort

Reg. \$799  
**NOW ONLY \$399<sup>95</sup>!**  
SAVE \$399<sup>95</sup>



**FLEXSTEEL** HOME

**CHIP** Collection

- Rocker Recliner
- High-Density Seat Cushion

Reg. \$1069  
**NOW ONLY \$799!**  
SAVE \$270



**FLEXSTEEL** HOME

**MINNIE** Collection

- Swivel recliner

Reg. \$1369  
**NOW ONLY \$999<sup>95</sup>!**  
SAVE \$369<sup>95</sup>



**FLEXSTEEL** HOME

**ARLO** Collection

- Triple Power Rocker Recliner
- High Density Seat Cushion

Reg. \$1749  
**NOW ONLY \$1329<sup>95</sup>!**  
SAVE \$419<sup>95</sup>



**FLEXSTEEL** HOME

**RIO** Collection

- Power Recliner with Power Headrest

Reg. \$1699  
**NOW ONLY \$1399<sup>95</sup>!**  
SAVE \$299<sup>95</sup>



**PALLISER**

**HIGHLAND** Collection

- Triple Power
- Contemporary Style

Reg. \$1939  
**NOW ONLY \$1599!**  
SAVE \$340

LIFT CHAIRS



**MEGA MOTION** Products for BETTER LIVING

**Lift Chair**

- For smaller users

Reg. \$969  
**NOW ONLY \$799<sup>95</sup>!**  
SAVE \$169<sup>95</sup>



**MEGA MOTION** Products for BETTER LIVING

**Lift Chair**

- Heat and Massage!

Reg. \$1049  
**NOW ONLY \$899<sup>95</sup>!**  
SAVE \$149<sup>95</sup>



**HOOKEER** FURNITURE

**Lift Chair**

- Power Headrest
- Lumbar Support

Reg. \$2079  
**NOW ONLY \$1699<sup>95</sup>!**  
SAVE \$379<sup>95</sup>



# FAST SHIPPING ON SPECIAL ORDERS



**LEGENDS**  
FURNITURE

## 4 PIECE SET

Reg. \$2999

**NOW ONLY \$2099<sup>95</sup>!**

Queen Bed, Dresser, Mirror and Night Stand

Linsey's traditional style is blended with an updated rustic, wire brushed finish to create something fresh and new while radiating warmth and relaxation!

**SAVE \$899<sup>05</sup>**



**UNIVERSAL**

EXPLORE HOME™

## 4 PIECE SET

Reg. \$4399

**NOW ONLY \$3488!**

Queen Bed, Dresser, Mirror and Night Stand

**SAVE \$911**

## TRIBECCA BEDROOM SET

- Two bed styles
- Variety of coordinating night stands, dressers, mirrors and chests
- Solid wood with finish of your choice.



Hand made American furniture in Ohio's Amish country. Third generation of furniture craftsmen.

**SAVE UP TO 38% ON MAVIN AMISH FURNITURE!**

# 0% INTEREST FOR 24 MONTHS\*

\*When paid in full on qualifying purchases with select financing companies made now through March 13th, 2024. Interest will be charged to your account from the purchase date if the promotional balance, including optional charges, is not paid in full within 24 months or if you make a late payment. Equal Monthly Payments Required. See back page for details.



**Liberty Furniture**  
INDUSTRIES, INC

## 7 PIECE TRESTLE TABLE SET

Reg. \$2899<sup>95</sup>

**NOW ONLY \$1859<sup>95</sup>!**

Includes trestle table, and six slat back side chairs. Features dark chestnut finish, two 12-inch leaves and an easy glide track system. Grey Linen upholstery seats with nylon chair glides to protect flooring.

**SAVE \$1040**

**ALWAYS THE LOWEST PRICES GUARANTEED!**  
GOING ON NOW THROUGH MARCH 13TH



**SAVE \$875<sup>05</sup>**

Reg. \$5275 **NOW ONLY \$4339<sup>95</sup>!**

**SMITH BROTHERS**  
of BERNE

Quality Craftsmanship & Quality Lumbar Framing

Each piece is designed to become a treasured part of your home for years to come

**AMERICAN MADE CUSTOM UPHOLSTERY**



# Earn up to an Additional **\$500** In-Store Gift Card\*\*

\*\*with qualifying furniture purchase. See store for details.



**SAVE \$400**

**Fusion** **EVERLEIGH**  
2-piece Sectional Sofa

Reg. \$1499  
**NOW ONLY \$1099!**



**SAVE \$700**

**Fusion** **AWESOME OATMEAL**  
SECTIONAL SOFA

Reg. \$2199<sup>95</sup>  
**NOW ONLY \$1499<sup>95</sup>!**

COMFORT meets LUXURY **PAULA DEEN Home**



**SAVE UP TO 60%**

**PLUS EARN AN ADDITIONAL \$500 IN-STORE GIFT CARD!**

## HOME THEATER



**ELITE POWER FABRIC 3 PIECE HOME THEATER SEATING**  
(Color may vary)

**NOW ONLY \$1099!** Each Piece

**PALLISER**



**AUDIO DOUBLE POWER FABRIC THEATER SEATING**  
(Color may vary)

**NOW ONLY \$1379<sup>95</sup>!** Each Piece

**PALLISER**

## 0% INTEREST FOR 24 MONTHS\*

\*When paid in full on qualifying purchases with select financing companies made now through March 13th, 2024. Interest will be charged to your account from the purchase date if the promotional balance, including optional charges, is not paid in full within 24 months or if you make a late payment. Equal Monthly Payments Required. See back page for details.



**SAVE \$799<sup>05</sup>**

**Fusion** **DURANGO PEWTER**  
SECTIONAL SOFA

Reg. \$2799  
**NOW ONLY \$1999<sup>95</sup>!**



**STANLEY**  
Contemporary Sofa

**SAVE \$137<sup>05</sup>**

Reg. \$687  
**NOW ONLY \$549<sup>95</sup>!**



**England** **ANGIE**  
Sofa

Reg. \$999<sup>95</sup>  
**NOW ONLY \$799<sup>95</sup>!**



**SMITH BROTHERS of BERNE**

Quality Craftsmanship & Quality Lumbar Framing

Each piece is designed to become a treasured part of your home for years to come

**AMERICAN MADE CUSTOM UPHOLSTERY**



**Fusion** **BRITTA GREYSTONE**

Reg. \$1199  
**NOW ONLY \$899!**



**SAVE \$240**

**CRAFTMASTER**  
Sofa

Reg. \$1189<sup>95</sup>  
**NOW ONLY \$949<sup>95</sup>!**



**SAVE \$300**

**England** **REED**  
Sofa

Reg. \$1379<sup>95</sup>  
**NOW ONLY \$1079<sup>95</sup>!**



**CLOSEOUT!**

**SAVE \$600**

**PALLISER BORREGO**  
Leather Sofa

Reg. \$1799<sup>95</sup>  
**NOW ONLY \$1199<sup>95</sup>!**



**QUICK SHIP!**

**SAVE \$382**

**CRAFTMASTER** **KAIS-41**  
Sofa

Reg. \$1729  
**NOW ONLY \$1347!**



**SAVE \$728**

**LeatherItalia** **NEWPORT**  
Sofa

Reg. \$2477  
**NOW ONLY \$1749!**



**SAVE \$505**

**UNIVERSAL** **SALINA**  
Sofa

Reg. \$3000  
**NOW ONLY \$2495!**

Allow Our Designers to **CUSTOM DESIGN** the Fabrics that are **PERFECT FOR YOU!**



# FAST SHIPPING ON SPECIAL ORDERS

Earn up to an **\$500** In-Store Gift Card\*\*

\*\*with qualifying furniture purchase. See store for details.



**PLYMOUTH 7 PIECE DINING SET**  
Includes round to oval table, 4 side chairs and 2 arm chairs.

Reg. \$2897  
**NOW ONLY \$2179!**

FLEXSTEEL HOME



**LIBERTY ANGLEWOOD 5 PIECE PEDESTAL TABLE SET**

Feel comfortable and elegant at the same time. Includes pedestal table and four slat back upholstered side chairs.

Reg. \$1299  
**NOW ONLY \$749<sup>95</sup>!**

Liberty Furniture Industries, Inc.

**ALWAYS THE LOWEST PRICES GUARANTEED!**  
GOING ON NOW THROUGH MARCH 13TH

POWER



FLEXSTEEL HOME

**HENRY Reclining Sofa**  
Triple Power - Zero Gravity

**NOW ONLY \$2699<sup>95</sup>!**



PALLISER

**Each piece is unique and made to order!**



**WILD CARD Reclining Sofa**

**NOW ONLY \$899<sup>95</sup>!**



**CLIVE**  
Leather, Power Headrest & Lumbar, Extended Footrest

**NOW ONLY \$1699<sup>95</sup>!**



**ROYCE**  
Leather Power Reclining Sofa with USB Charging Port

LeatherItaliausa<sup>SM</sup> SINCE 1997

**NOW ONLY \$1399<sup>95</sup>!**



**WHITNEY**  
Power with Headrest Leather

**NOW ONLY \$1799<sup>95</sup>!**



**POINT BREAK**  
Triple Power, Leather

**NOW ONLY \$2099<sup>95</sup>!**



**MARVEL**  
Power Reclining Leather Sofa

**NOW ONLY \$2149<sup>95</sup>!**



FLEXSTEEL HOME

**RYLAN Reclining Sofa**  
with Power Headrest

**NOW ONLY \$2699<sup>95</sup>!**



HEKMAN

**ACCENT TABLE**

**NOW ONLY \$149<sup>95</sup>!**



BRADINGTON YOUNG  
a division of HOOKER FURNITURE

**SAVE up to 40%**

on Gorgeous  
**Bradington Young**  
Top Quality Furniture



# HUGE SAVINGS ON ALL OUTDOOR FAMILY FUN!

ALL GRILLING ACCESSORIES  
**ON SALE!**



NOW ONLY  
**\$449**

**SPIRIT II E210 2 BURNER  
LIQUID PROPANE GRILL**  
★ ★ MADE IN AMERICA ★ ★  
AND REFINED FOR MORE THAN A CENTURY



NOW ONLY  
**\$998**

**weber**  
**GENESIS S-325S**



**evo** # 10-0002-LP

**PROFESSIONAL WHEELED  
CART WITH SEASONED  
COOK SURFACE**

Grill, sear, toast, stir fry, sauté, steam,  
roast, smoke and bake!

**BIG GREEN EGG®** NOW AVAILABLE  
AT JEFF LYNCH!



**TRAERGER PRO  
SERIES 575 WOOD  
PELLET  
GRILL**

NOW ONLY  
**\$799<sup>95</sup>**



**TRAERGER  
IRONWOOD  
650 WOOD  
PELLET  
GRILL**

NOW ONLY  
**\$1299<sup>95</sup>**



**TRAERGER TIMBERLINE XL  
WOOD PELLET GRILL**

NOW ONLY  
**\$3799<sup>99</sup>**  
After \$100 Instant  
Rebate



**GOZNEY®**

**DOME  
OUTDOOR  
PIZZA  
OVEN**

NOW ONLY  
**\$1999**



Roast, smoke,  
bake, and  
steam! Plus  
Pizza in 60  
seconds!

STAND SOLD  
SEPARATELY

**PLANK & HIDE CO.™**



**Adeline  
Sofa** NOW ONLY  
**\$1099!**

**Adeline  
Coffee Table** NOW ONLY  
**\$399!**

**Adeline  
End Table** NOW ONLY  
**\$239!**

**BEAUTIFUL OUTDOOR FURNITURE  
THAT IS BUILT TO LAST!**



**LANE VENTURE**

**Coastal Living  
Outdoor Collection  
Laconia Sofa**



**UNIVERSAL**



**LANE VENTURE**

**Colson Sectional**

- Performance with Comfort
- Plush Seating
- WeatherMaster Ultimate Outdoor Cushion
- Choice of Fabrics
- Made in the USA

**SoPoly**

**St. Simons Curved  
Back Adirondack Chair**  
NOW ONLY **\$399<sup>99</sup>**

**SAVE  
\$79**



- Eco Friendly
- Fade Resistant
- Low Maintenance
- 20 Year Warranty
- Made in the USA





# Luxurious Simplicity, Beauty, and Elegance.

## LONGMEADOW BEDROOM SET

Impressively sized paneled headboard and a footboard that includes drawer storage. Constructed of solid wood in a finish of your choice.

- Matching Nightstand, Dresser, Mirror and Chest of Drawers
- Environmentally Friendly



Hand made American furniture in Ohio's Amish country. Third generation of furniture craftsmen.

SAVE UP TO **38%** ON MAVIN AMISH FURNITURE!



## TRIBECA BEDROOM

The Tribeca group sets the perfect stage for relaxed, refined comfort. Our panel bed would be well suited for its namesake, a neighborhood in Manhattan.



## CHARLESTON BEDROOM

The perfect mix of charm and elegance with Arched Panel beds and Louver Panel beds. Available in many different wood types and finishes to ensure that each piece is made to fit your life and your space.



## RIALTO DINING CHAIRS

Comfort and beauty combine in these well designed Rialto dining room chairs finished in the stain of your choice.



## BRINKLEY DINING CHAIRS

You will want to pull up a seat and stay awhile in these comfortably designed Brinkley dining room chairs finished in the stain of your choice.



## VENICE DINING CHAIRS

Our warm Asbury finish adds a golden glow to the timeless Venice chair. This stately chair brings the perfect balance to any dining room.



## GRACE DINING CHAIRS

Gently curved back, nail head trim and square tapered legs. The highly versatile Grace Chair speaks to many decor styles. Dependent upon fabric and stain, it can easily go from modern rustic to contemporary chic.



All chairs: Custom built as Stationary 24" or 30" Bar Stools, Swivel 24" or 30" Bar Stools, Backless Stationary or Swivel Bar Stools, Benches with Arms, Side Benches (without Arms), and Backless Benches.

## Largest selection of **LIFT CHAIRS** in Greenville.

Available for immediate delivery.

**HUGE SELECTION OF POWER CONTROLLED LIFT CHAIRS NOW ON SALE STARTING AT \$799<sup>95</sup>!**



GOOD



Products for **BETTER LIVING**

Regular price \$949  
**NOW ONLY \$799**  
SAVE \$250

Model 4001

- 3 position power recliner
- Whisper quiet
- USB port in hand wand
- Up to 300 lb weight capacity
- 100% polyester fabric
- Easy to reach side pockets on both sides
- Integrated emergency battery back up
- Won't interfere with pacemakers, hearing aids or insulin pumps



BETTER



Products for **BETTER LIVING**

Regular price \$1,199  
**NOW ONLY \$989**  
SAVE \$300

Model 3601

- Deluxe heat and massage
- Side pockets
- Lithium standard emergency battery back up
- Lay flat position
- Up to 325 lb weight capacity
- All FDA tested
- Won't interfere with pacemakers, hearing aids or insulin pumps
- Best lift chair in the industry



**MODEL MM101-NAF-A11**  
Lift Chair

**NOW ONLY \$1079<sup>95</sup>!**



Products for **BETTER LIVING**

- Emergency battery backup
- Infinite position
- USB port
- Heavy duty steel mechanism



**MODEL MM3730**  
Lift Chair

- Power lumbar and power headrest

**NOW ONLY \$1299<sup>95</sup>!**



Products for **BETTER LIVING**



**HOOKER**  
FURNITURE

- Dual Motor
- Power Lumbar
- Top Grain Leather

**NOW ONLY \$1699<sup>95</sup>!**

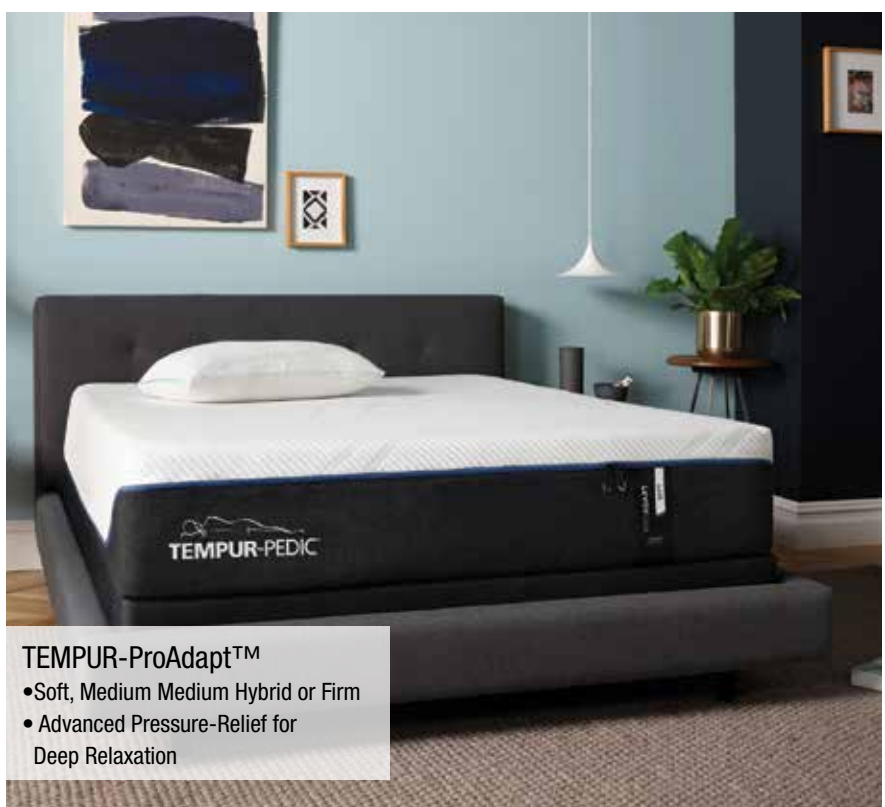




TEMPUR-PEDIC®

UP TO  
**\$300 BONUS**  
**JEFF LYNCH**  
**IN-STORE GIFT CARD!**  
 with purchase of  
 select Tempur-Pedic  
 models

**AMERICA'S CELEBRATION** TEMPUR-PEDIC®



**TEMPUR-ProAdapt™**  
 • Soft, Medium Medium Hybrid or Firm  
 • Advanced Pressure-Relief for Deep Relaxation



**TEMPUR-LuxeAdapt™**  
 • Soft or Firm  
 • Featuring TEMPUR-APR material

**0% INTEREST FOR 24 MONTHS\***  
 \*When paid in full on qualifying purchases with select financing companies made now through March 13th, 2024. Interest will be charged to your account from the purchase date if the promotional balance, including optional charges, is not paid in full within 24 months or if you make a late payment. Equal Monthly Payments Required. See back page for details.



TEMPUR-PEDIC®

**LUXE breeze®**  
**4-Level Cooling System**

- SMARTCLIMATE® MAX DUAL COVER SYSTEM**  
 An enhanced zip-off cover with double the cool-to-touch power so you feel cooler when you lie down.
- PURECOOL+™ PHASE CHANGE MATERIAL**  
 Exclusive, next-generation technology absorbs heat so you feel cooler while you fall asleep.
- TEMPUR-CM+™ MATERIAL**  
 Advanced TEMPUR Material redesigned with maximum airflow for all-night cooling and comfort.
- VENTILATED TEMPUR-APR™ MATERIAL**  
 Our most pressure-relieving material ever—now with an all-new, ultra-breathable design.

**L** **JEFF LYNCH** **YOUR BEST CHOICE FOR 72 years**  
 Appliances ■ Electronics ■ Bedding ■ Furniture  
 ALWAYS THE LOWEST PRICE **GUARANTEED** PERIOD. [www.jefflynch.com](http://www.jefflynch.com)

17 Roper Mountain Rd. • Greenville, SC 29607 • (864) 268-3101  
 HOURS: Monday-Friday 9am-6pm • Saturday 9am-5pm • Sunday Home With Family!



# SAVE UP TO 50% ON THE BEST BEDDING IN AMERICA NOW!



**Sealy**

**CROWN JEWEL COLLECTION  
FIRST AND PARK**  
Firm Queen Mattress

SAVE \$202

NOW ONLY ~~Reg. \$299~~ **\$97!**

PLUS UP TO  
**\$200 BONUS**  
**JEFF LYNCH**  
IN-STORE GIFT CARD!  
with purchase of  
select Sealy  
models

**Sealy**

**CROWN JEWEL COLLECTION  
SECOND AND PARK**  
Firm Tight Top Queen Mattress

SAVE \$322

NOW ONLY ~~Reg. \$699~~ **\$377!**



**Sealy**

**YOUR CHOICE! FULL** Tight Top or Hybrid Firm

SAVE UP TO \$171

CROWN JEWEL COLLECTION  
**FOURTH AND PARK**

NOW ONLY ~~Reg. \$559-\$659~~ **\$488!**

**Sealy**

**HYBRID LACEY**  
Queen Mattress

SAVE \$250

NOW ONLY ~~Reg. \$1449~~ **\$1199**

**Sealy** HYBRID

## 0% INTEREST FOR 24 MONTHS\*

\*When paid in full on qualifying purchases with select financing companies made now through March 13th, 2024. Interest will be charged to your account from the purchase date if the promotional balance, including optional charges, is not paid in full within 24 months or if you make a late payment. Equal Monthly Payments Required. See back page for details.



**STEARNS & FOSTER®**

**STUDIO  
COLLECTION  
MEDIUM FEEL  
QUEEN MATTRESS**

Premium Memory Foam Comfort Layers adapt to support your body for comfort and pressure relief!

SAVE \$800

NOW ONLY ~~Reg. \$2599~~ **\$1799**

UP TO  
**\$300 BONUS**  
**JEFF LYNCH**  
IN-STORE GIFT CARD!  
with purchase of select  
Stearns & Foster  
models



**STEARNS & FOSTER®**

**ESTATE COLLECTION**  
YOUR CHOICE OF SOFT, FIRM OR  
ULTRA FIRM QUEEN MATTRESS

The perfect balance of comfort & support takes pressure relief to the next level.

SAVE \$600

NOW ONLY ~~Reg. \$2999~~ **\$2399**

L

# JEFF LYNCH

Appliances ■ Electronics ■ Bedding ■ Furniture

ALWAYS THE LOWEST PRICE GUARANTEED PERIOD.

**YOUR BEST CHOICE FOR**

72

years

[www.jefflynch.com](http://www.jefflynch.com)

17 Roper Mountain Rd. • Greenville, SC 29607 • (864) 268-3101  
HOURS: Monday-Friday 9am-6pm • Saturday 9am-5pm • Sunday Home With Family!

\*No down payment, no interest for 24 months applies to the following qualifying purchases. Custom furniture orders require a 25% deposit. Kitchen packages \$3,500 & up, Furniture Packages \$3,500 & up, High Definition TV's and Electronics \$1,700 & up, Bedding sets \$1,800 & up. No down payment, no interest for 60 months applies to qualifying purchases of Tempur-Pedic, Sealy, and Stearns & Foster of \$2999 or more. Lower priced sales may qualify for other 0% Interest Financing programs. All Financing Programs are subject to credit approval. Equal monthly payments required. If original balance is paid in full by the due date, then no interest is charged. Current APR is as low as 28.99% and will vary by plan and financing partner. Other plans require minimum payment of 6% of remaining balance. Rate is subject to change without notice. See store for full details. Offers and prices valid now through March 13th, 2024. manufacturer promotional rebates/ offers may end prior to the end of the sale. The merchandise in this circular was selected far in advance of printing. If an item is out of stock, we will order the same or comparable model for you. We appreciate your understanding and your business. Any typographic, photographic, or production errors are subject to correction in pricing and description. All models shown may not be on display in our store but are available from our warehouse stock. Jeff Lynch Appliance & TV Center's Retail Store Price Guarantee: We guarantee the Best Price, up front, the first time we meet. If another local retailer (up to 75 miles away) were to advertise a lower price within 30-days, on the same in-stock brand and model, after verification, we will gladly beat that price. This guarantee does not apply to any competitors' website pricing, offers including financing, packages/bundling of items, free or bonus offers, pricing errors, installation or rebate offers. It is also not applicable to closeouts, one of a kind, limited quantity, out of stock, open box or refurbished items. \*\*Receive In-Store Gift Card up to \$500 (max value) on qualifying purchases. Limit 1 - \$500. Gift Card per Household of Total purchases within 90 days. Gift Card's Total Value must be redeemed within 6 months, on a new purchase in a different category. †See store for details.