

Operating Instructions

Thank you very much for choosing SLIK MINI-PRO V tripod.

The SLIK Corporation has designed your tripod to be a sturdy, rugged, dependable product that will provide you with many years of satisfactory use.

Please take a few moments to read this operating instruction carefully before use so that you can take full advantage of your Tripod's many fine features.

Retain this operating instruction in case you might want to refer back to it.

⚠ Caution

This caution icon refers to information pertaining to important safety procedures in preventing injuries, or damages which may occur as a result of mishandling this product.

🚫 Prohibition

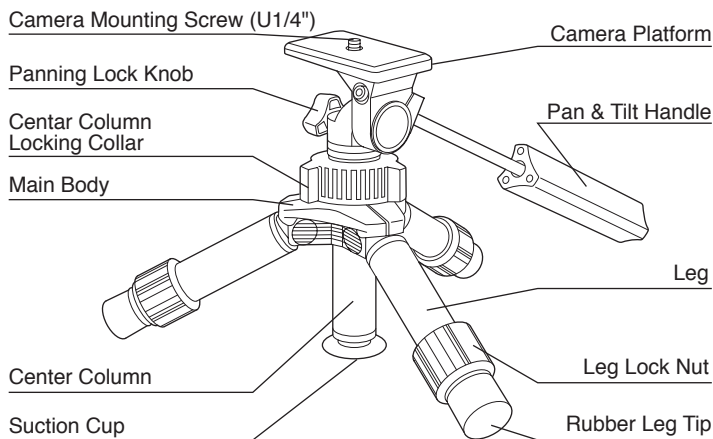
This prohibited icon refers to information pertaining to prohibited contents. Please refer to instructions closely to avoid accidents.

Specification

Folded length	20 cm (7 11/12")
Max. operating height	21.8 cm (8 7/12")
Max. center column ext.	4.5 cm (1 3/4")
Weight	0.354 kg (12 oz)

H172T

Components



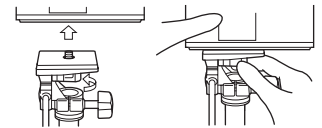
Equipment that can be loaded on this Tripod

🚫 Prohibition

This product has been designed to handle equipment weighing under 2 kgs (4 lbs 6 oz). Do not overload.

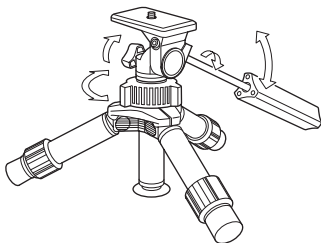
Some equipments weighing under 2 kgs (4 lbs 6 oz), such as long lenses, may not balance well due to its weight distribution. In such case, please use a larger tripod.

Attaching a camera



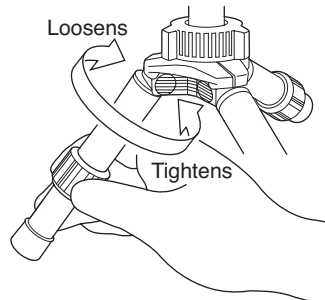
Attach camera by rotating Camera Mounting Screw counterclockwise until camera is firmly seated on tripod platform.

Using the Pan Head



Loosen the Pan & Tilt Handle to tilting, the Panning Lock Knob to panning and move the camera into the desired shooting position. Turn the Handle and the Knob clockwise to lock the camera in position.

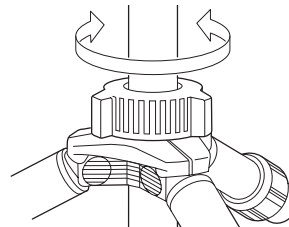
Extending the Tripod Legs



To extend any leg, turn the Leg Lock Nut one half turn counterclockwise.

Extending the Center Column

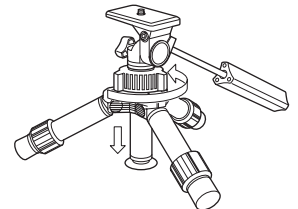
⚠ Caution



Loosen the Center Column Locking Collar by turning it counterclockwise. Raise the Center Column to the desired height and lock in place by turning the collar clockwise.

Using the Suction Cup

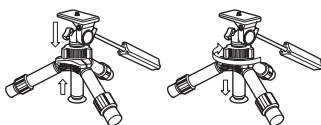
⚠ Caution



- Release the Center Column Locking Collar.
- Place the Suction Cup against a smooth surface.

Note: The surface must be smooth and flat to use the Suction Cup.

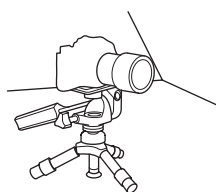
Using Your MINI-PRO V



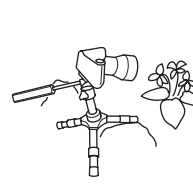
- Press the tripod down against the surface and pull the Center Column up slightly.
- Lock the Center Column Locking Collar.



Use as a chest pod provides extra support for your Camera.



Set it up on car hood by using suction cup.



Ideal for low position photography.

Care of the Tripod



- DO NOT apply any grease or oil to this product.
- Clean with a mild detergent and a soft cloth only.
- DO NOT use close to flame. Avoid extreme heat.

Slik corporation reserves the right to make changes in design and/or improvements on the products without any obligation and advanced notice.