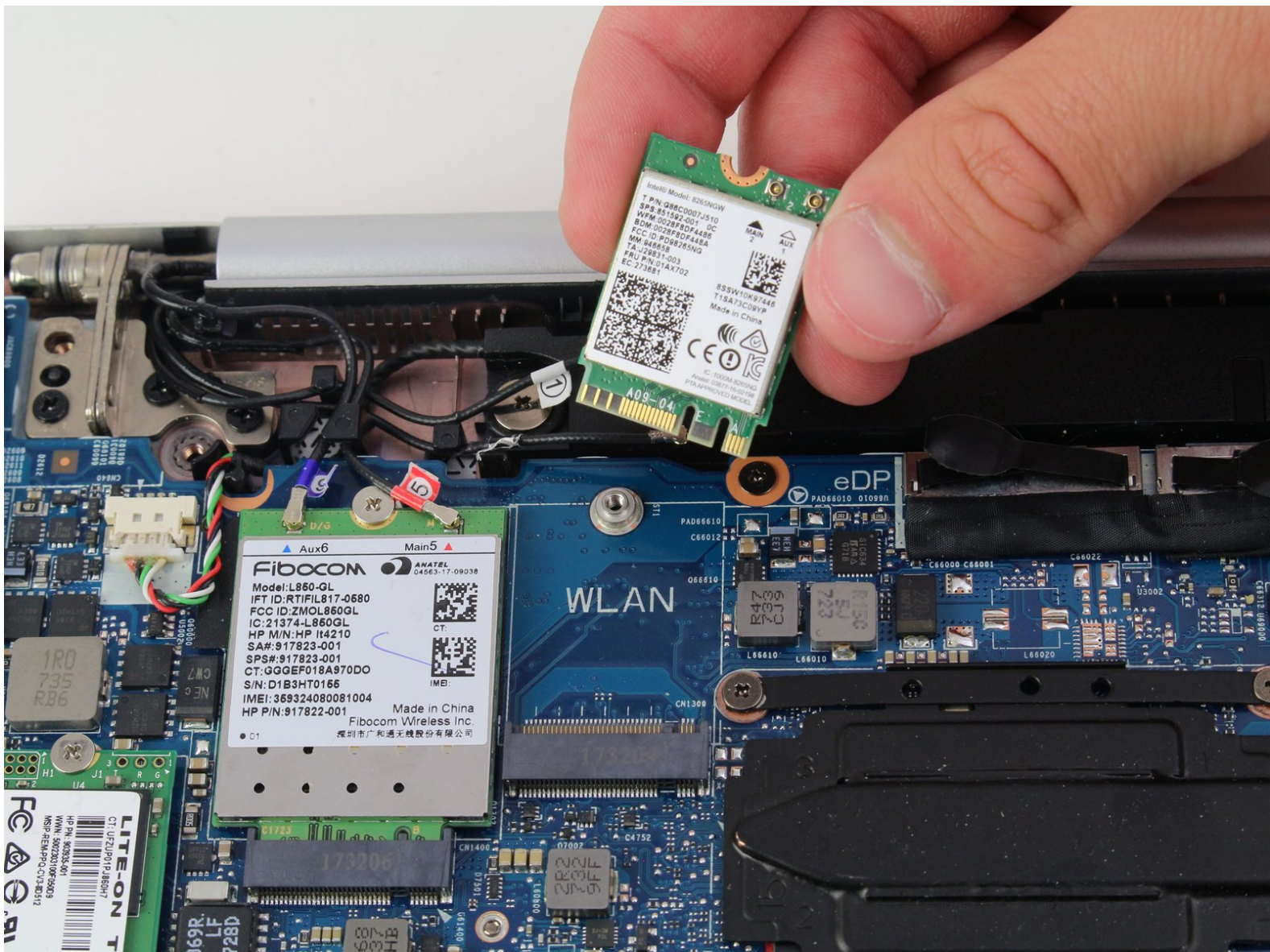




HP EliteBook 840 G5 WIFI Card Replacement

This comprehensive guide will take instruct you on how to disassemble and replace the wifi card on the HP Elitebook 840 G5.

Written By: Ryan McMullen



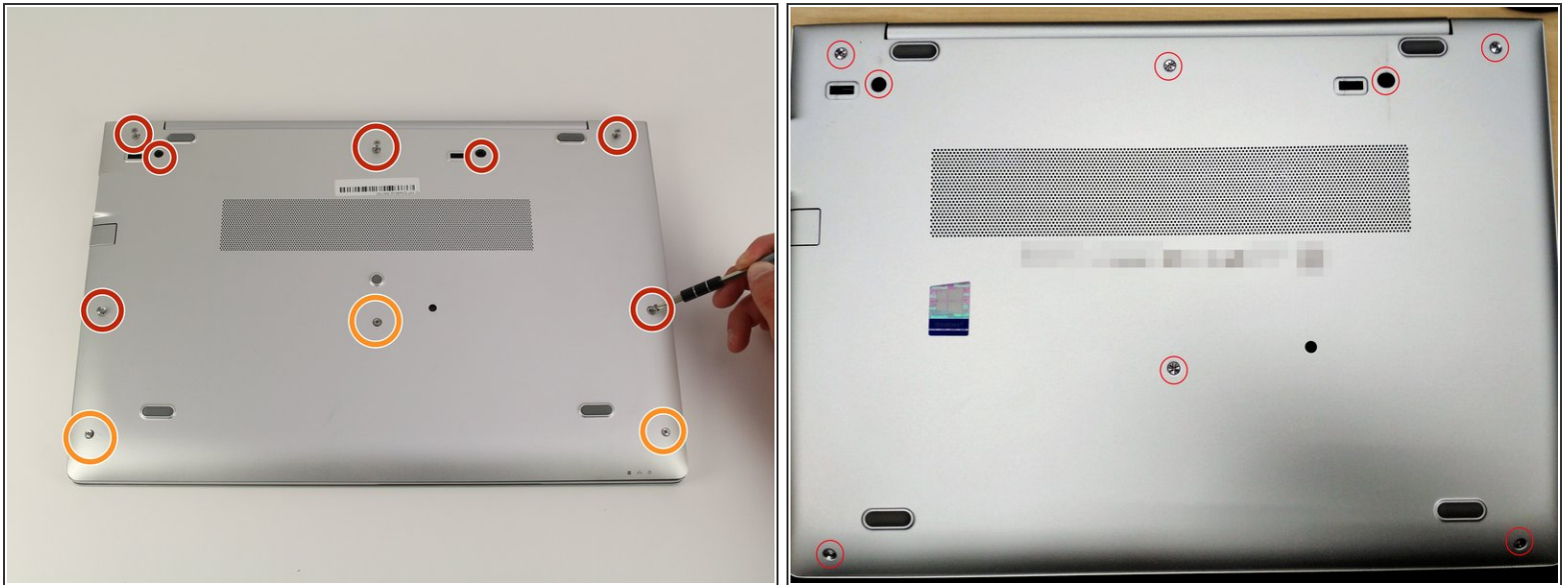
INTRODUCTION

The Wifi card can be one of the most important components of your computer. This is what connects the computer to the wireless internet by means of communicating through the router. If in range, they are able to connect to wireless internet if it's not password protected. If it doesn't work, the computer is rendered obsolete. If your computer can't connect to the internet or has trouble with the upload/download speed and you are wishing to replace or upgrade, you have come to the right place!

TOOLS:

- [Phillips #1 Screwdriver](#) (1)
 - [iFixit Opening Tools](#) (1)
-

Step 1 — Back Cover



- Use a Phillips #1 screwdriver to undo the five screws. The top three screws are 10 mm and the two side screws are 7 mm.
- Unscrew the bottom three screws using the same screwdriver.
- ⓘ The bottom Phillips #1 screws don't remove from the back plate, but do need to be unscrewed.
- ⓘ Some models have a slightly different screw configuration, shown in the second photo.

Step 2



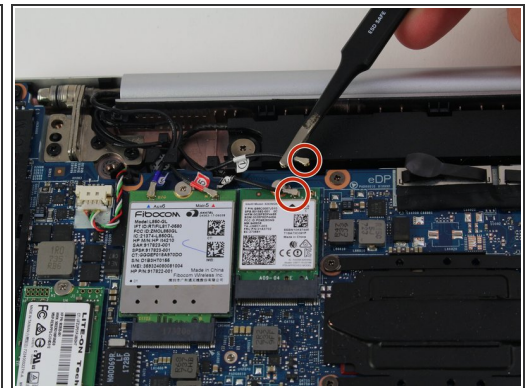
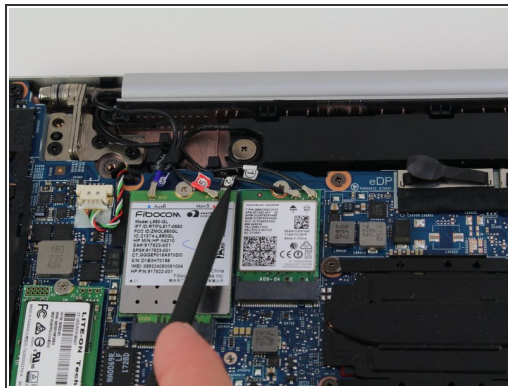
- Turn computer so that the hinged side is facing up.
 - Use the plastic opening tool to pry open the back plate.
 - Drag the plastic opening tool along the edge from left to right and use a second opening tool to pry open the top right corner.
 - Repeat the 3rd step for the other side.
 - Repeat on Left and Right sides of the system. There are two points in the middle (on the left and right sides of the center screw) that will release with slight lifting pressure.
- i** You should be able to hear a pop when prying open the corners.

Step 3



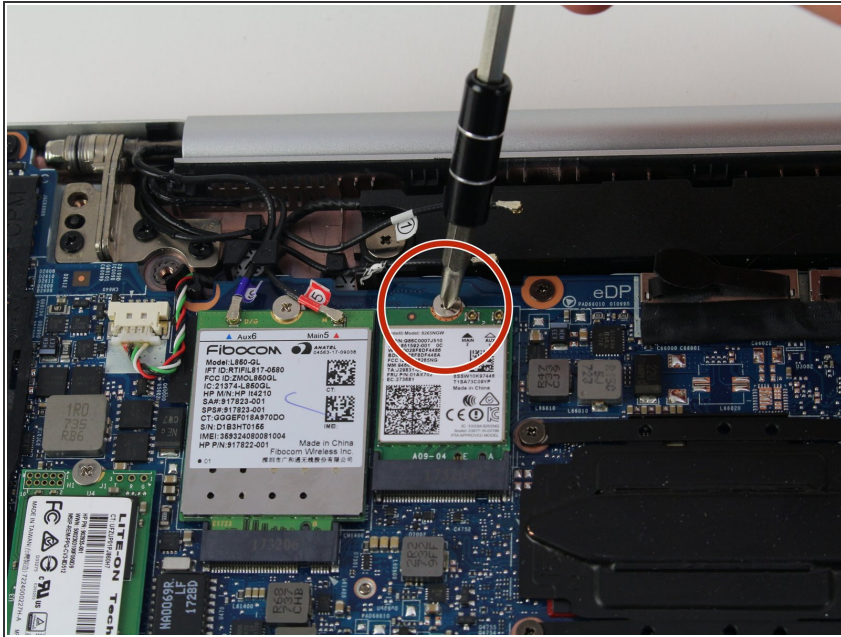
- Grab the back plate and separate it slowly away from the device.
- ⓘ No wiring is connected to the back plate. Separate with caution, as there are electric components on the inside.

Step 4 — Wi-Fi Card



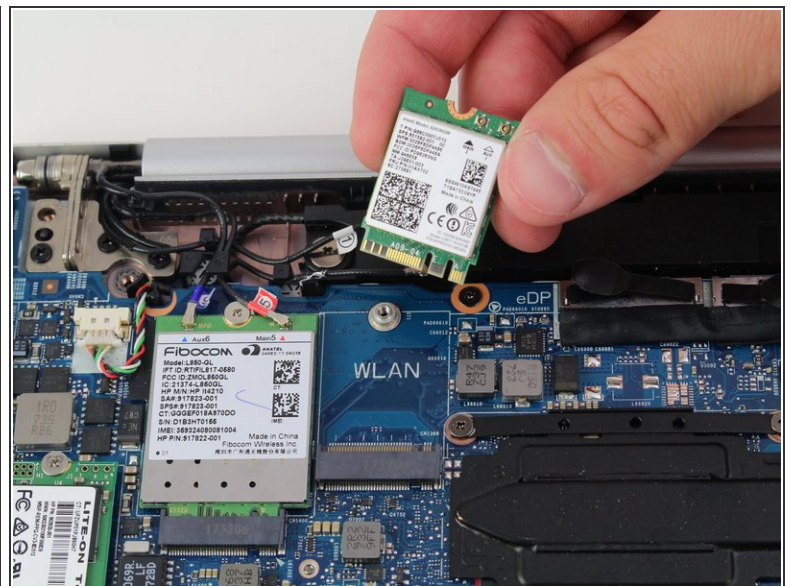
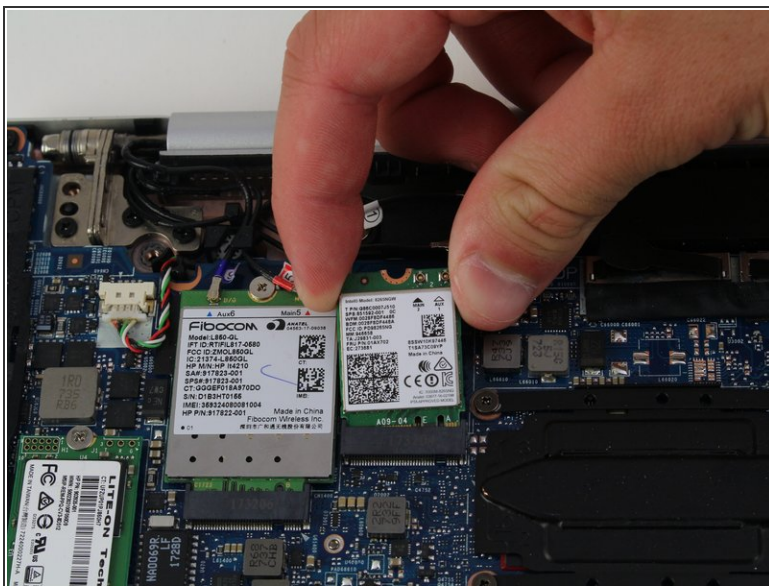
- Using either the spudger, tweezers or your fingers, remove the wire connectors from the WiFi card by pulling up.
- ⓘ The wire connectors should disconnect from the WiFi card with minimal force; Refrain from pulling too hard, as you might damage the WiFi card further.

Step 5



- Remove the single 2mm screw that is holding the WiFi card in place using the Phillips #1 screwdriver.

Step 6



- The WiFi card will pop up. Carefully grasp both sides of the card and pull outwards, away from its dock.
- ⓘ The WiFi card should be removed easily with minimal force; Refrain from pulling too hard.

To reassemble your device, follow these instructions in reverse order. Make sure to handle the component with extreme care, as it is delicate and has no protection.