



Canon
Delighting You Always



EOS C70



XF-AVC



RF MOUNT

ENTER A NEW AGE OF FILMMAKING

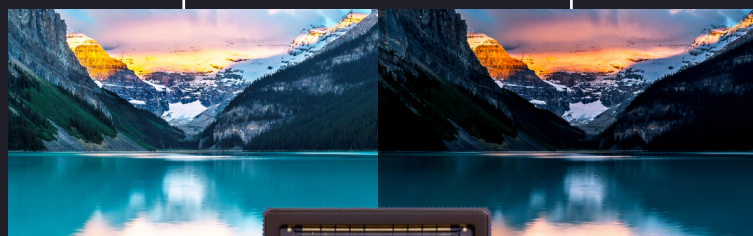
EOS C7D

LEAD THE NEXT GENERATION OF FILMMAKING

Disrupt the status quo with this game-changer. The latest EOS C7D is a groundbreaking RF-mount cinema camera that is comparable in size to a DSLR and features Canon's 4K Super 35mm DGO sensor. Despite the compact form factor, the camera promises a slew of professional features such as Dual Pixel CMOS AF, motorized Neutral Density (ND) filter, as well as professional audio and time code interfaces to satisfy even the most discerning content creators.



NOISE-PRIORITIZING GAIN OUTPUT SATURATION-PRIORITIZING GAIN OUTPUT



SUPER 35MM DUAL GAIN OUTPUT SENSOR FOR IMPRESSIVE QUALITY

Incorporating Canon's next-generation Dual Gain Output (DGO) technology, the EOS C7D packs an incredible 16+ stops of dynamic range to generate amazingly low-noise High Dynamic Range (HDR) video.

4K / 120FPS

FOR HIGH FRAME RATE SHOOTING

The EOS C7D captures 4K video in 4:2:2 10-bit up to 120fps and 2K Crop/180fps - while with audio recording and full functionality of Dual Pixel CMOS AF, unlocking new creative possibilities.



REMARKABLY COMPACT & VERSATILE

FOR IMPROVED MOBILITY

At just 160mm wide by 130mm height and a depth of 116mm, the EOS C7D is significantly smaller than the EOS C300 Mark III, making it lightweight and flexible to use with a gimbal or drone setup. Combining professional video technology of the Cinema EOS series with the compactness and mobility of the EOS R series, the EOS C7D is ideal for the single operator to achieve excellent imagery.



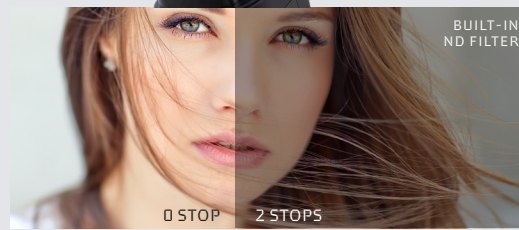
SIMULTANEOUS RECORDING

The versatile dual SD card slots allow simultaneous recording in different formats and resolutions, including both Intra-frame and Long GOP options using Canon's XF-AVC or MP4 (H.265) codecs.



TOUCH CONTROL + VERTICAL SUPPORT

The 3.5-inch 2.76-million dot touch panel LCD gives quick, direct access to recording and display settings, such as ISO/Gain and zebra display. The LCD also enables touchscreen recording and supports vertical recording.



POWERFUL FEATURES

Expect features such as motorized 10-stop ND filter, C-Log2/C-Log3, PQ and HLG gamma for HDR, thirteen customisable buttons, custom in-camera LUTs and Combination IS.

BUILT-IN ND FILTER

0 STOP 2 STOPS

THE RF



MOUNT

FOR THE FUTURE OF LENS TECHNOLOGY

54MM

LARGE DIAMETER

Allowing the rear element of RF lenses to be larger in diameter means front elements are much smaller, which reduces refraction and bending of light rays within the lens. This enables a compelling combination of brilliant image quality and enhanced optical performance of the frame from corner to corner.

12-PIN

COMMUNICATION

A 12-pin connection between the camera and lens boosts communication speed with larger volumes of data transfer, enabling more effective image stabilisation, correction of lens aberration, and more accurate focusing.

20MM

FLANGE FOCAL DISTANCE

With a 20mm flange focal distance, adapting a large variety of professional lenses to the RF mount is easily done with both Canon and third-party adapters, allowing the C7D unmatched versatility.



PROFESSIONAL INTERFACE FOR LIMITLESS POSSIBILITIES

Even in a compact body, the EOS C7D comes with two mini XLR terminals, 3.5mm microphone and headphone terminals, TimeCode in/out BNC port, and a full-size HDMI terminal that supports 4K 10-bit output. The USB Type-C port connects to Wi-Fi dongles* for wireless functions. The camera also features a built-in stereo microphone for high-quality audio recording.

* sold separately



CANON MOUNT ADAPTER EF-EOS R 0.71X

The new mount adapter EF-EOS R 0.71x* allows users to attach EF lenses to the camera. Designed with optical conversion to capture the same full-frame angle of view with the Super 35mm sensor, this mount adapter offers the user two key benefits of maintaining the field of view of the lens while increasing light transmission by 1 stop.

* sold separately

A NEW STANDARD IN OPTICAL IMAGE QUALITY

ULTRA-WIDE ANGLE ZOOM



RF15-35MM F/2.8L IS USM

The RF15-35mm f/2.8L IS USM is a bright ultra-wide zoom lens with a constant f/2.8 maximum aperture, perfect for shooting handheld and in indoor and low-light environments. Ingenious optical design allows for high corner-to-corner resolution while the f/2.8 aperture at any focal length captures sharp subjects with fantastic background separation.

STANDARD ZOOM



RF28-70MM F/2L USM

The RF28-70mm f/2L USM features a maximum aperture of f/2, offering unparalleled performance throughout its zoom range. With L-series optics, it offers the flexibility and performance of a handful of fixed focal length lenses, delivering superlative performance from 28-70mm.

TELEPHOTO ZOOM



RF70-200MM F/2.8L IS USM

A remarkably fast telephoto zoom lens, the RF70-200mm f/2.8L IS USM brings consistent high image quality across its entire focal length with its large f/2.8 aperture. A rugged build and compact design makes the RF70-200mm f/2.8L IS USM ideal for event coverage, corporate videos and shoots where mobility is key.

STANDARD



RF85MM F/1.2L USM DS

The RF85mm f/1.2L USM DS delivers the highest optical performance at maximum aperture among Canon interchangeable 85mm lenses¹. The Defocus Smoothing (DS) function ensures extremely smooth rendering of out-of-focus regions, producing soft and natural bokeh with delightful highlights and even fall-offs.

¹ October 24, 2019 - Canon research

SUPER-TELEPHOTO ZOOM



RF800MM F/11 IS STM

The RF800mm f/11 IS STM, one of the lightest super telephoto lens, comes with Image Stabilization function to significantly reduce camera shake. The incredible portability and focal length opens up new doors in wildlife filmmaking and documentaries.

SCAN TO LEARN MORE

REVOLUTIONARY RF LENSES



SPECIFICATIONS

EOS C70

CAMERA SECTION	
Lens Mount	RF mount
Imaging Device	Super 35mm equivalent CMOS sensor (single chip)
Effective Pixels	4096 x 2160 (approx. 8.85 million pixels)
ISO Sensitivity	160-25600 (100-102400 with expansion)
Base ISO	800 (Canon Log2 / Canon Log3) 400 (Wide DR)
ND Filter	Motorized variable ND filter (2/4/6/8*/10* stop) * in extended mode
White Balance	AWB / sunlight / light bulb / set (A/B) / Kelvin setting (2000-15000K)
Gamma	Canon Log2 / Canon Log3 PQ / HLG BT.709 Wide DR
Dynamic Range	16+ stop
Autofocus	Dual Pixel CMOS AF with EOS iTR AF X
Image Stabilizer	Electronic IS, Super 16 IS
Recording Format (Video)	XF-AVC Intra XF-AVC Long GOP MP4 (HEVC/H.264)
Recording Frame Rate	XF-AVC Intra 4K/29.97p 2K/59.94p XF-AVC Long GOP 4K/120p 2K Crop/180p MP4 (HEVC/H.264) 4K/120p 2K Crop/180p
Recording Format (Audio)	Linear PCM 24bit 48kHz 4ch (XF-AVC) MPEG-2 AAC LC 16bit 48kHz 2ch (MP4)
Recording Media	SD card (2 slots)

LCD screen	3.5 inch LCD 2.76 million dots (1280 x 720 x RGB), touch panel
INPUT/OUTPUT	
Wi-Fi	Supported with USB Dongle (3rd-party accessory)
HDMI Out	Type-A
Audio Input	Mini XLR 3Pin x2 (phantom power) φ3.5mm stereo mini jack x1
Headphone Output	φ3.5mm stereo mini jack x1
Time Code	BNC Terminal (Input/Output)
Remote Control	REMOTE A (φ2.5mm stereo mini jack)
Ethernet	Supported with USB Dongle (3rd-party accessory)
USB	Type-C
DC In	φ3.4mm jack x1
GENERAL	
Dimensions (W x H x D)	Approx. 6.3 x 5.1 x 4.6 in. / 160 x 130 x 116 mm
Mass (Body only)	Approx. 2.6 lbs. / 1170g
Power Requirements	DC IN terminal: DC 24V Battery terminal (DC 14.4V)
Power Consumption	14.6W
Operating Temperature	Approx. 0 °C to 40 °C 85% (relative humidity) Approx. -5 °C to 45 °C 60% (relative humidity)
Battery	BP-A30/60

SYSTEM CHART



Canon

Delighting You Always

SOUTH & SOUTHEAST ASIA REGIONAL HEADQUARTERS
CANON SINGAPORE PTE. LTD.

1 Fusionopolis Place, #15-10 Galaxis, Singapore 138522 | <https://asia.canon>



Find out more

DISCLAIMERS

This document is for information only and the contents are subject to change without notice. Errors and omissions excepted. Images are simulated. Weight and dimensions are approximates. Nothing in this document should be construed as a warranty. Product/ Service options, name and availability may vary by region. We expressly disclaim any liability or contractual obligations with respect to this document. Canon and PowerShot, among others are trademarks of Canon Inc. and/or its affiliates. Other names, marks and logos contained in this document may be the registered trademarks or trademarks of their respective owners.

0222W568