

Friedrich Chill® Premier Series
Room Air Conditioners

SMART. QUIET. COOL.



THE EXPERTS IN ROOM AIR CONDITIONING



SMART HOME READY

SET/ADJUST
SCHEDULES

ADJUST
TEMPS

CONTROL
BY VOICE

Chill® Premier | Smart Room Air Conditioners

HOME OR AWAY, YOU'RE IN CONTROL WITH THE FRIEDRICHGO™ APP.

Integrated Wi-Fi control from your smartphone. Also compatible with Amazon Alexa or Google Home.

Connect in minutes

It's easy with our simplified set up process

Easily set your home, away, and night time preferences

Create a custom cooling schedule that fits your lifestyle

You're in control anytime, anywhere

Power your unit on and off, change temperature, system mode, and adjust fan speeds no matter where you are

Why FriedrichGo™?

By maintaining even temperatures with centralized controls, you reduce wasted energy and lower utility and maintenance costs while extending the life of your equipment.



UP TO 25% QUIETER* THAN COMPETITOR'S ROOM AIR CONDITIONERS

QuietMaster® technology

Building the quietest air conditioners begins with the design process and continues through the selection of superior components and materials.

It is shaped by skilled manufacturing and refined through on-going product testing in our engineering lab.


The result is a noticeably quieter cooling and heating experience, as much as 25% quieter than competitor's products.



FOR INSTALLATION IN A WINDOW OR THROUGH-THE-WALL (CCW/CEW MODELS)

CCW/CEW MODEL FEATURES

QuietMaster® Technology

- Heavy duty insulation on inner wall for sound absorption
- Stiffened sheet metal casing to block external noise
- Wide air discharge vents optimize airflow and minimize front panel noise 
- Counterweights dampen vibration and decrease sound

Control Features

- Built-in Wi-Fi control on the go with the FriedrichGo™ App
- Smart home / voice command device compatability (Amazon Alexa or Google Home)
- 24-hour timer
- Remote Control

Comfort & Convenience

- 3 cooling and fan-only speeds, plus auto fan (3 cooling/3 heating speeds, plus auto fan on CEW models)
- Sleep setting
- Auto restart saves settings if power is interrupted
- 8-way air flow control
- Washable air filter

Installation Features

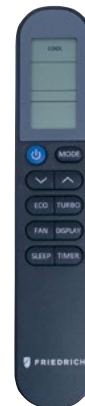
- Slide-out chassis for installation in a window or through-the-wall
- Standard installation hardware included
- Expandable side curtains

Earth Friendly

- ENERGY STAR® qualified models
- Money Saver® setting saves money by operating the fan only when cooling
- R-32 refrigerant with low Global Warming Potential on select models

Reliable Construction

- Both the indoor and outdoor coils are corrosion protected for a longer life cycle



Easy-to-use remote control




*Based on testing conducted at Friedrich's Design and Development Center in comparison to leading rotary compressor models.

FOR WINDOW INSTALLATION ONLY (CCF MODELS)

COOLING SIZING GUIDE

CCF MODEL FEATURES

QuietMaster® Technology

- Heavy duty insulation on inner wall for sound absorption
- Stiffened sheet metal casing to block external noise
- Wide air discharge vents optimize airflow and minimize front panel noise 
- Counterweights dampen vibration and decrease sound

Control Features

- ✔ Built-in Wi-Fi control on the go with the FriedrichGo™ App
- ✔ Smart home / voice command device compatibility (Amazon Alexa or Google Home)
- ✔ 24-hour timer
- Remote Control

Comfort & Convenience

- 3 cooling and fan-only speeds, plus auto fan
- ✔ Sleep setting
- Auto restart saves settings if power is interrupted
- 8-way air flow control
- Washable air filter

Installation Features

- One-piece frame (fixed chassis) for simplified and fast installation in windows only
- Standard installation hardware included
- Expandable side curtains

Earth Friendly

- ✔ ENERGY STAR® qualified models
- ✔ Money Saver® setting saves money by operating the fan only when cooling
- ✔ R-32 refrigerant with low Global Warming Potential on select models

Reliable Construction

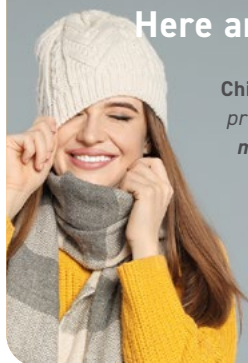
- Both the indoor and outdoor coils are corrosion protected for a longer life cycle

AREA TO BE CONDITIONED IN SQ. FT.	APPROXIMATE COOLING BTU REQUIRED
100 - 150	5000
150 - 250	6000
250 - 300	7000
300 - 350	8000
350 - 400	9000
400 - 450	10000
450 - 550	12000
550 - 700	14000
700 - 1000	18000
1000 - 1200	21000
1200 - 1400	23000
1400 - 1500	24000
1500 - 2000	30000
2000 - 2500	34000

Guide based on normal room insulation, average number of sun exposed windows and two person occupancy.

1. If heavily shaded, reduce cooling Btus required by 10%
2. If very sunny, increase cooling Btus required by 10%
3. Add 500 Btus per person over 2 people
4. Add 4,000 Btus if the area is a kitchen

Need a Friedrich model that heats and cools? Here are some things to consider.



Chill® Premier Electric Heat models utilize an electric heat strip that provides warm air quickly. They can be used for **primary heating in moderate climates** and as **supplemental heating in colder climates**. They are ideal for rooms that are always 'too cold in winter'.

Your **Friedrich Dealer** can assist you in selecting the right **Chill® Premier** for your local climate and application.



Friedrich Air Conditioning Co. | www.friedrich.com



Friedrich Chill® Premier Series Room Air Conditioners



COOL ONLY

115 volt- 5,000 to 15,000 Btu
230 volt- 18,000 to 16,000 Btu
EFFICIENCY: EERs up to 12.1

ELECTRIC HEAT MODELS

115 volt- 8,000 Btu COOLING
4,200 Btu HEATING
EFFICIENCY: EER 11.0
230 volt- 12,000 to 24,000 Btu COOLING
10,600 Btu HEATING
EFFICIENCY: EERs up to 11.0

FEATURES

- Built-in Wi-Fi control on the go with the *FriedrichGo™* App
- Smart home / voice command device compatibility (Amazon Alexa or Google Home)
- 24-hour timer
- Remote control
- 3 cooling and fan-only speeds, plus auto fan (3 cooling/3 heating speeds, plus auto fan on CEW models)
- Sleep setting
- **QuietMaster®** technology for up to 25% quieter operation*
- Heavy duty insulation on inner wall for sound absorption
- Stiffened sheet metal casing to block external noise
- Wide air discharge vents optimize airflow and minimize front panel noise
- Counterweights dampen vibration and decrease sound
- Auto restart saves settings if power is interrupted
- 8-way air flow control
- Washable air filter
- Slide-out chassis for installation in a window or through-the-wall (CCW and CEW models only)
- One-piece frame (fixed chassis) for simplified and fast installation in windows only (CCF models)
- Standard installation hardware included
- Expandable side curtains
- ENERGY STAR® qualified models
- R-32 refrigerant with low global warming potential (GWP) on select models
- **Money Saver®** setting saves money by operating the fan only when cooling
- Both the indoor and outdoor coils are corrosion protected for a longer life cycle



*Based on testing conducted at the Friedrich Design and Development Center in comparison to leading rotary compressor models



PRELIMINARY SPECIFICATIONS

Model	UPC	Cooling Btu	Volts Rated	Cooling Amps	Cooling Watts	EER	CEER	Estimated Yearly Energy Cost	Moisture Removal-Pints/HR	Refrigerant	CFM	Wt. Net/Ship Lbs.
FIXED CHASSIS, COOL ONLY (WINDOW INSTALLATION ONLY)												
★ CCF05B10A	724587441666	5000	115	4.3	459	12.1	12.1	\$42	1.0	R32	141	44/51
★ CCF06B10A	724587441673	6000	115	4.3	492	12.1	12.1	\$49	0.9	R32	141	44/51
★ CCF08B10A	724587441680	8000	115	6.1	661	12.0	12.0	\$65	1.0	R32	206	51/57
★ CCF10B10A	724587441697	10000	115	8.8	810	12.0	12.0	\$81	1.2	R32	282	64/73
★ CCF12B10A	724587441703	12000	115	9.6	980	12.0	12.0	\$98	1.5	R32	270	73/82

Model	UPC	Cooling Btu	Heating Btu	Volts Rated	Cooling Amps	Cooling Watts	EER	CEER	Estimated Yearly Energy Cost	Moisture Removal-Pints/HR	Refrigerant	CFM	Wt. Net/Ship Lbs.
SLIDE OUT CHASSIS, COOL ONLY													
★ CCW06B10B	724587440249	6000	—	115	4.3	492	12.1	12.1	\$54	0.9	R32	200	44/51
★ CCW08B10B	724587440256	8000	—	115	5.8	661	12.0	12.0	\$69	1.0	R32	250	44/61
★ CCW10B10B	724587442267	10000	—	115	7.3	826	12.1	12.0	\$95	1.2	R32	300	51/68
★ CCW12B10B	724587442274	12000	—	115	8.6	992	12.0	12.0	\$107	1.5	R32	330	64/86
★ CCW15B10B	724587442281	15000	—	115	11.0	1270	11.8	11.8	\$125	2.0	R32	400	73/93
★ CCW18B30B	724587442298	18000	—	230	7.1	1525	11.8	11.8	\$149	2.7	R32	520	106/136
★ CCW24B30B	724587442304	24000	—	230	10.2	2308	10.3	10.3	\$227	2.7	R32	590	117/144
SLIDE OUT CHASSIS, HEAT & COOL													
CEW08B11A	724587439526	8000	4200	115	6.3	670	11.0	11.0	\$61	2.1	R410A	250	44/61
CEW12B33A	724587439533	12000	10600	230	4.8	1060	11.0	10.9	\$96	3.3	R410A	265	64/86
CEW18B33A	724587439540	18000	10600	230	7.2	1600	11.0	11.0	\$159	5.5	R410A	430	106/136
CEW24B33A	724587439557	24000	10600	230	10.6	2340	10.1	10.1	\$222	6.5	R410A	560	117/144

As an ENERGY STAR® partner, Friedrich Air Conditioning Co. has determined that the selected ENERGY STAR® models meet the ENERGY STAR® guidelines for energy efficiency.

EER is the unit's Energy Efficiency Ratio; CEER is the unit's Combined Energy Efficiency Ratio.

Your energy costs will depend on your utility rates and use. The estimated energy cost is based on an electricity cost of \$.13 per kWh. For more information, visit www.ftc.gov/energy.

Due to continuing research in new energy-saving technology, specifications are subject to change without notice.

INSTALLATION

Model	Height Inches	Width Inches	Depth Inches	Depth From Front to Louvers	Window Width Inches		Carton Dimensions Inches		
					Minimum*	Maximum	Height	Width	Depth
CCF05B10A, CCF06B10A, CCF08B10A	13 3/8	18 5/8	15 5/8	—	23	36	14 1/2	21 1/2	17 3/4
CCF10B10A, CCF12B10A	15 1/8	19 7/8	21 1/2	—	26	36	14 1/2	21 1/2	18 1/2
							17 1/2	21 7/8	23 3/4



All Chill Premier CCF models are designed for window installation only.

* Minimum widths achieved using one side curtain assembly as opposed to both in a standard installation.

Model	Height Inches	Width Inches	Depth Inches	Depth From Front to Louvers	WINDOW INSTALLATION		THRU-WALL INSTALLATION		Carton Dimensions Inches		
					Window Width Inches	Minimum*	Maximum	Thru-the-wall Finished Hole Inches	Height	Width	Height
CCW06B10B, CCW08B10B	13 1/2	18 5/8	19 3/4	6	23	36	14	19 1/4	15	21 1/2	22
CEW08B11A, CCW10B10B, CCW12B10B, CEW12B33A,	15 1/8	19 3/4	24 1/8	9 1/2	26	36	16	20 1/4	17	22	26
CCW15B10B, CCW18B30B, CEW18B33A	18	23 7/8	25 3/8	8 1/5	28	41	19	24	19 3/8	25 5/8	29 5/8
CCW24B30B, CEW24B33A	18 5/8	26 1/2	27	10 3/5	30	41	20	27 1/4	19 1/2	29 1/4	31

* Minimum widths achieved using one side curtain assembly as opposed to both in a standard installation.

CIRCUIT RATING/BREAKER/POWER CORD

Model	Circuit Rating Breaker or T-D Fuse	Plug Face (NEMA#)	Power Cord Length (ft.)	Wall Outlet Appearance
CCW06B10B, CCW08B10B, CCW10B10B, CCW12B10B, CEW08B11A	125V - 15A	5 - 15P	6	
CCW15B10B			5.5	
CCW18B30B, CCW24B30B	250V - 20A	6-20P	4	
CEW12B33A, CEW18B33A, CEW24B33A			6	

Power cord is located on front left side of Chill Premier units.



Friedrich Air Conditioning Co. | www.friedrich.com