



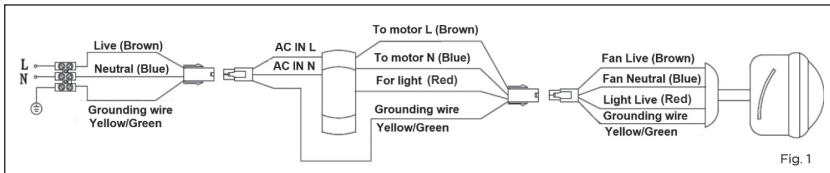
**WARNING:** THIS PRODUCT MUST BE INSTALLED BY A LICENSED ELECTRICIAN

### Product Specifications

Input Voltage: 230-240V ~ 50 Hz  
 Standby: < 0.5 W  
 Output Rating Fan Motor: 100 W max.  
 Output Rating LED Light: 20 W max.  
 Light Dimmer: Non dimmable

### Box contents

- Remote control (2 x AAA 1.5 V DC battery included)
- Receiver
- Remote control holder
- Screws
- Wall plugs



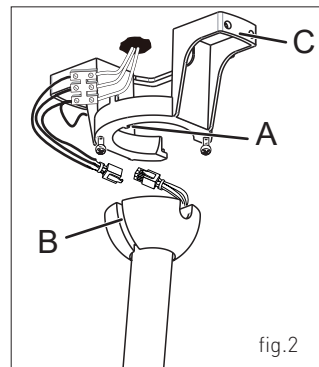
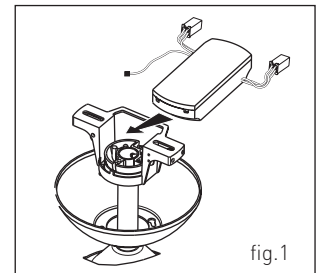
**PLEASE READ ALL INSTRUCTIONS CAREFULLY. RETAIN FOR FUTURE REFERENCE.**

## 1 IMPORTANT CONSIDERATIONS

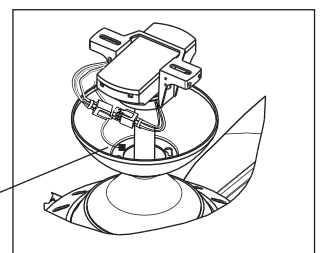
1. The Serene ceiling fan Remote control kit range is compatible with Serene AC ceiling fans only.
2. Remote control kit is adaptable with hangsure brackets for ceiling fans.
3. The remote control cannot be used in combination with a wall mounted fan controller.
4. The same remote control can be used to control several Serene ceiling fans fitted with the receiver module.
5. Fan can be directly connected using the compatible cable connectors on the remote control kit.
6. It is not recommended to use the wall control and remote control together.
7. If the fan model has lights, you can use both the remote and wall control to switch ON/OFF the lights, unless the wall control is equipped with a dimmer.
8. The remote and the receiver have already been paired during manufacturing. If the remote and receiver lose their pairing after installation or during use, they must be repaired. See the pairing section.

## 2 MOUNTING

Hang the fan on the bracket. Ensure bracket guide pin is fitted into slot on ball joint and that all wires are clear of the ball joint.

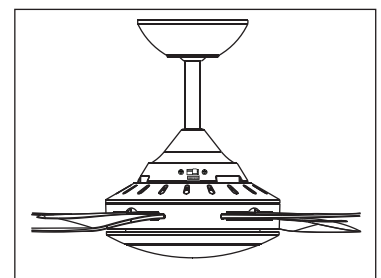


Insert the receiver into the bracket and connect the corresponding connectors to mains terminal blocks & to the fan as per fig.1&2.



RF antenna

Fix the canopy to the bracket by tightening the screw.



Remote Control	Mode	Operation
Wall-mount bracket included  	Timer	Allows the fan to run for a further 1/2/4/8 hours of operation before switching off automatically. Does not affect the light output.
	Fan ON	Press any speed control button (Low, Med or High)
	Fan Speed	3 fan speeds can be selected. Fan OFF will switch OFF fan when in Timer mode.
	Light	ON /OFF

## REMOTE CONTROL PAIRING

**NOTE:** The remote and receiver have already been paired during manufacturing. When the ceiling fan is installed for the first time, pairing of the remote and receiver is NOT required. If the remote and receiver lose pairing after installation or during use, the remote and the receiver must be re-paired. The scenario and method to re-pair the pairing of the AC ceiling fan remote and receiver are below.

### Possible Issues:

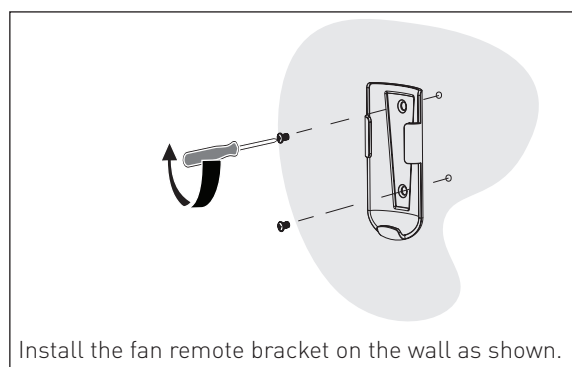
- Loss of control - Fan is only running at high speed after installation
- Loss of control - No reverse function after installation
- Loss of control - Remote cannot communicate with the receiver

### Solution:

1. Switch OFF the main power to ceiling fan.
2. Press and hold the "Fan OFF" button on the remote for 5 seconds (within 30 seconds of switching the power ON to the receiver of the ceiling fan). A long "beep" sound to indicate the pairing process is activated. Release the power button.
3. After waiting 2-3 minutes, turn the fan ON and change the speed of the ceiling fan by the remote to check the operation and successful pairing.

## BATTERY INSTALLATION

- 2 x AAA 1.5 V batteries are required to operate the remote control.
- Loosen the screw from the battery cover.
- Pull out the battery cover and install the batteries.
- Ensure the polarity is correct as shown in the battery compartment.
- Please remove the batteries if you intend not to use the ceiling fan for any long periods of time.



## PRODUCT NOTES

1. This product must be installed by a licensed electrician and used as per these instructions.
2. During installation a switch disconnection should be incorporated in the supply circuit.
3. This product contains no serviceable parts and no attempt should be made to repair this product. If the product is faulty it should be discarded.
4. This product must be cleaned periodically with a damp cloth. Cleaning agents and solvents should never be used.
5. This product has been designed to operate in ambient temperatures between 5°C to 40°C.
6. This product is not intended to be exposed to direct weathering. It is not suitable for installation in hazardous and/or corrosive areas.
7. Extended exposure to UV rays (such as exposure to direct sunlight) may cause discolouration of this product.
8. This product is not intended for use by young children or infirm persons without supervision. Young children should be supervised to ensure that they do not play with the product.
9. This product has been designed to operate on a nominal supply voltage of 230-240 V a.c. 50 Hz.
10. The fan must be securely attached to a structural member for support. Fixing means (hooks & brackets) must be fixed to the structural member with sufficient strength to withstand 4 times the weight of the ceiling fan.
11. The material in this product may vary in colour from batch to batch. Colour matching from one batch to another cannot be guaranteed.
12. Legrand reserves the right to modify the specification of this product at any time.

### Warranty Statements

- Legrand ("we or us") has given each purchaser who is a consumer ("you") a warranty against defects in its products.
- As a consumer, you are entitled to the benefit of the Warranty and should read and understand its terms. In addition, for the purposes of the Australian and New Zealand Consumer Laws, we note the following:
  - If we accept your claim under the Warranty we will reimburse all your reasonable expenses in making and pursuing the claim, including the cost of reimbursement of any defective products returned in the ordinary course to us at the address above by post or other agreed means. Any such claim must be made within 14 days of your receiving notice of our acceptance of your claim and include any necessary supporting documentation or invoices.
  - As a consumer, you have rights under the Australian and New Zealand Consumer Laws and may have rights under other applicable laws which cannot be excluded, restricted or modified. Those rights are in addition to any rights you have under the Warranty.
  - Legrand warrants this product for a period of 2 years from the date of purchase. Our goods (which we refer to in the Warranty as the Products) come with guarantees that cannot be excluded under the Australian and New Zealand Consumer Laws. You are entitled to a replacement or a refund for a major failure and compensation for any other reasonably foreseeable loss or damage. You are also entitled to have the goods repaired or replaced if the goods fail to be of acceptable quality and the failure does not amount to a major failure.
- Our contact details for the purpose of any claims made under the Warranty are below. Any claim under the Warranty must be sent in writing to the following address:

**AUSTRALIA ONLY**  
Legrand Australia Pty Ltd  
Nexus Industry Park  
Bldg 4, 43-47 Lyn Parade  
PRESTONS, NSW 2170  
1300 369 777  
sales.orders@legrand.com.au

**NEW ZEALAND ONLY**  
Legrand New Zealand Ltd  
106-124 Target Rd  
GLENFIELD, AUCKLAND  
0800 476 009  
nz.sales@legrand.co.nz

