

D-Link

ETHERNET BROADBAND ROUTER

- Install Router
- View Manual
- Adobe Reader
- Support



Exit

DIR-120

D-Link Quick Router Setup

D-Link

Quick Router Setup

welcome

check connection

install router

configure router

configure home network

DIR-120
setup



Choose your language:

This wizard will guide you through the setup of your new router. It will also provide you with a trial version of **Network Magic**, the best software for getting the most out of your home network.

This will take about 10 minutes.

To begin click **Next**.

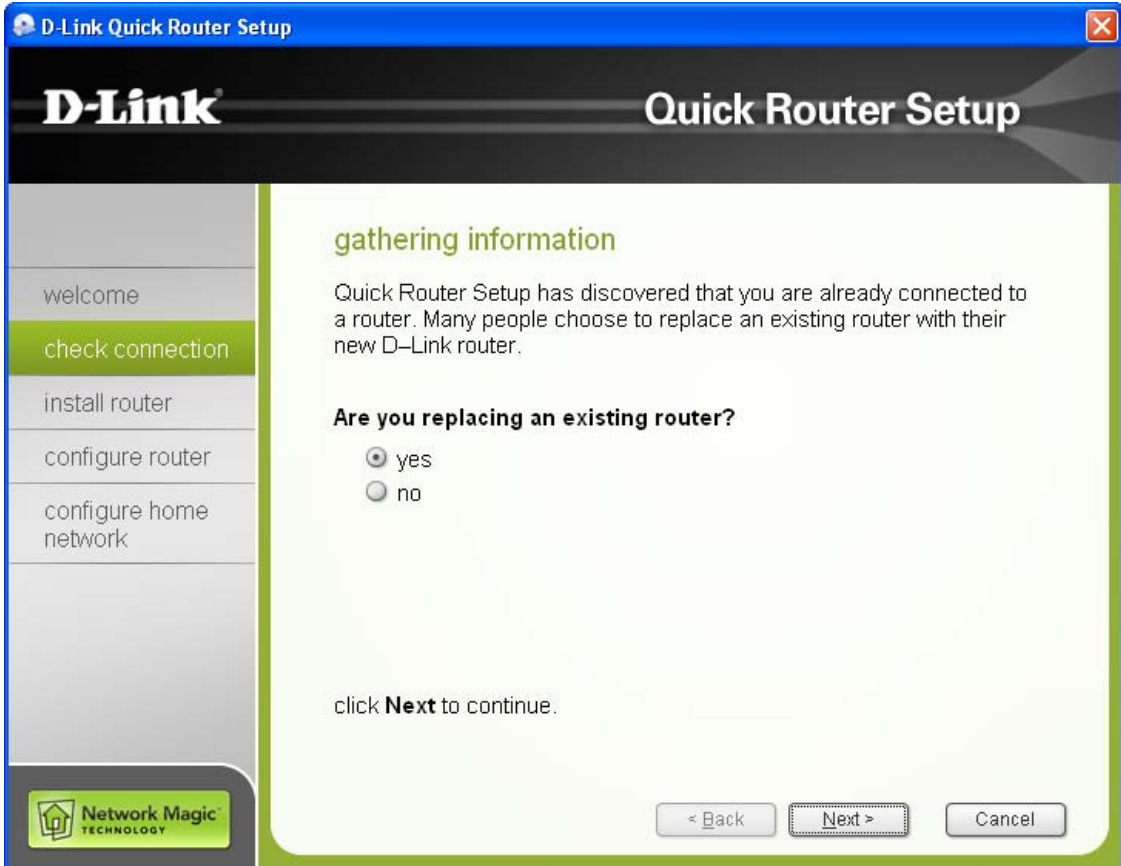


< Back

Next >

Cancel





welcome

check connection

install router

configure router

configure home network

gathering information

Quick Router Setup has discovered that you are already connected to a router. Many people choose to replace an existing router with their new D-Link router.

Are you replacing an existing router?

- yes
- no

click **Next** to continue.



< Back

Next >


Cancel

D-Link Quick Router Setup

D-Link Quick Router Setup

step 1/6

First, **unplug the power cable** from your old router, and remove its power supply from the outlet.



welcome
check connection
install router
configure router
configure home network

Network Magic TECHNOLOGY


< Back Next > Cancel

D-Link Quick Router Setup

D-Link Quick Router Setup

step 2/6

Next, turn off or unplug power to your cable or DSL modem.



welcome
check connection
install router
configure router
configure home network

Network Magic TECHNOLOGY

< Back Next > Cancel

D-Link Quick Router Setup

D-Link Quick Router Setup

step 3/6

Disconnect the ethernet cable from the port labeled "WAN" or "Internet" on the back of your old router.

Plug this into the grey port labeled "WAN" or "Internet" on your new D-Link router.



Network Magic TECHNOLOGY



Quick Router Setup

- welcome
- check connection
- install router**
- configure router
- configure home network

step 4/6

Disconnect all remaining ethernet cables from the back of your old router, and plug them into the blue ports on your new router.



< Back

Next >


Cancel

D-Link Quick Router Setup

D-Link Quick Router Setup

step 5/6

Reconnect the power supply to your cable or DSL modem.
Wait 30 seconds for the modem to startup before continuing.



Network Magic TECHNOLOGY


< Back Next > Cancel

D-Link Quick Router Setup

D-Link Quick Router Setup

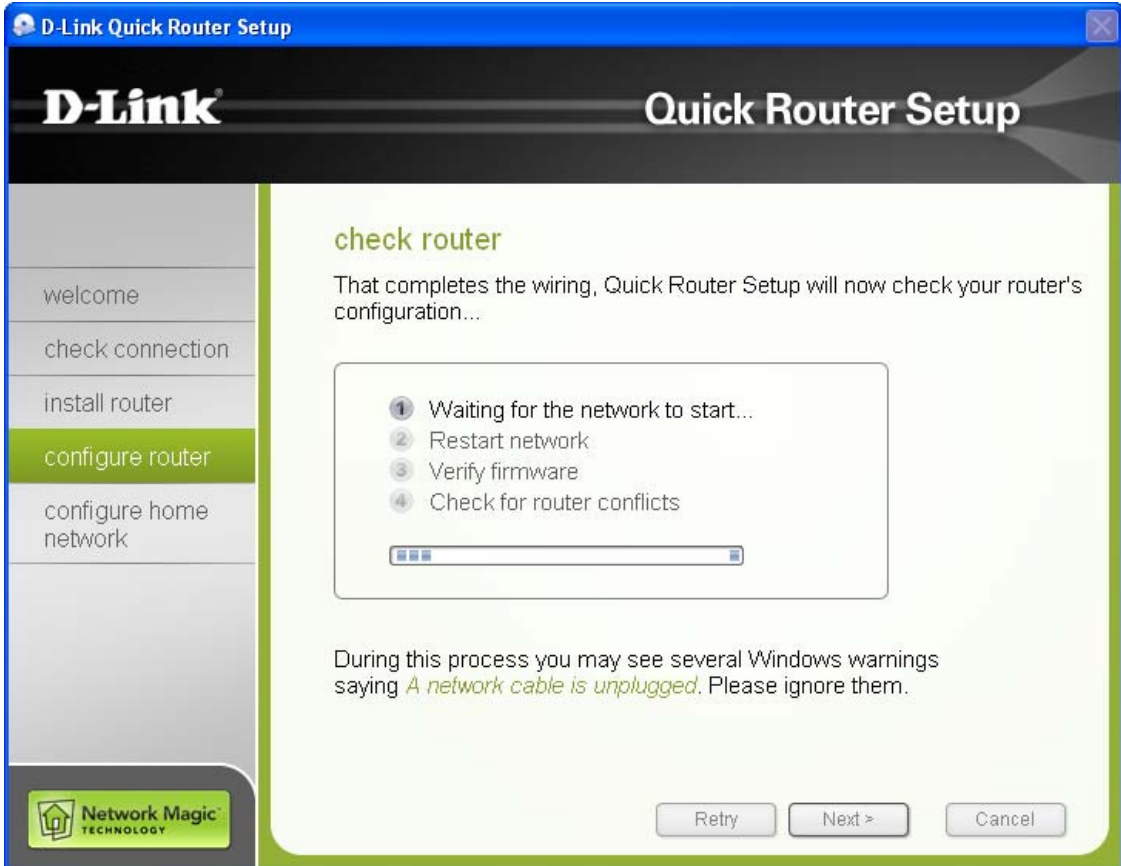
step 6/6

Now connect the **included power supply** from an available outlet to your new D-Link router.

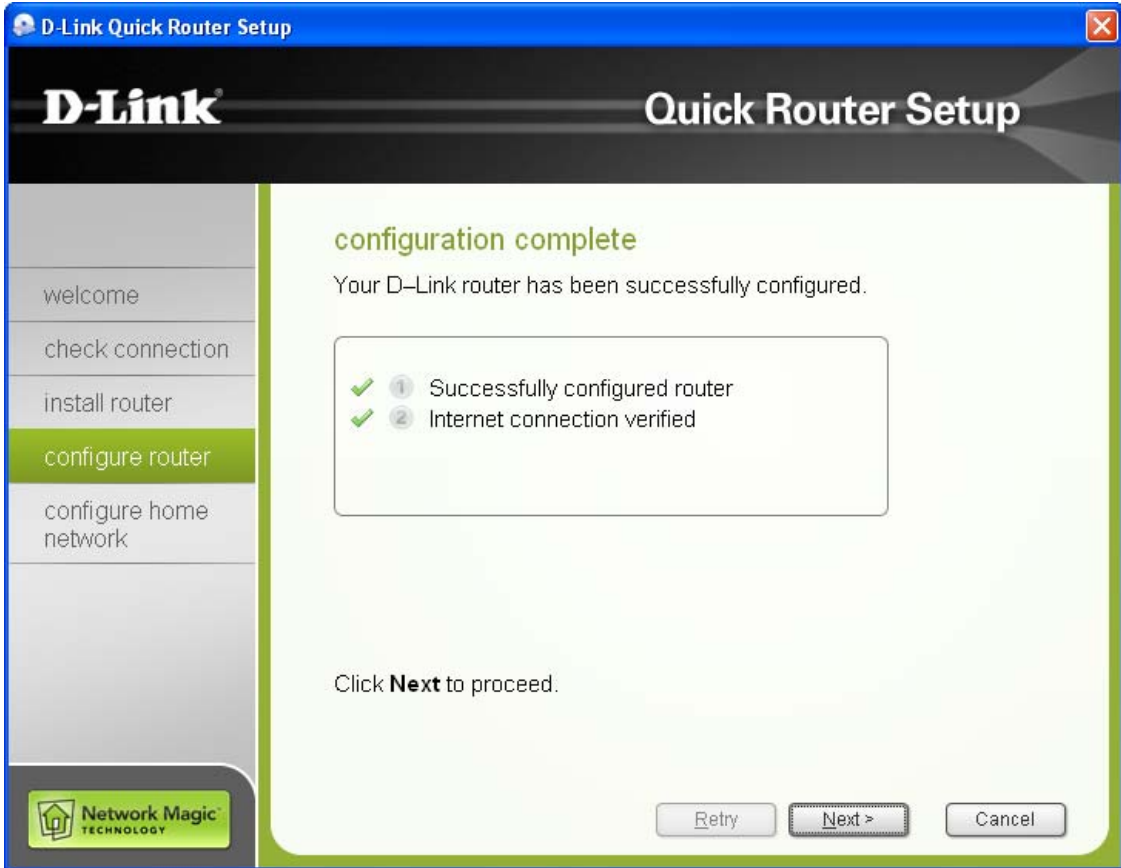


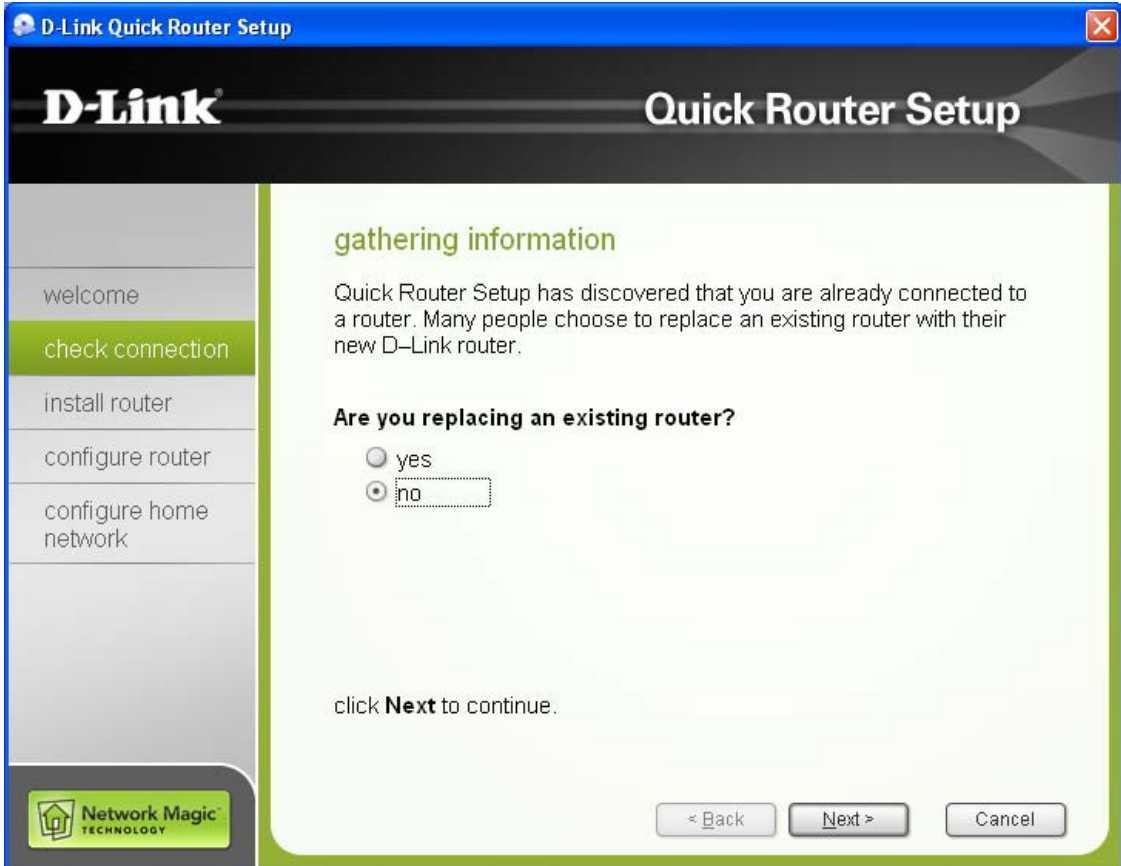
Network Magic TECHNOLOGY

< Back Next > Cancel









D-Link Quick Router Setup

D-Link

Quick Router Setup

welcome

check connection

install router

configure router

configure home network

gathering information

Quick Router Setup has discovered that you are already connected to a router. Many people choose to replace an existing router with their new D-Link router.

Are you replacing an existing router?

- yes
- no

click **Next** to continue.



< Back

Next >


Cancel

D-Link Quick Router Setup

D-Link Quick Router Setup

step 1/5

First turn off or unplug power to your cable or DSL modem.



Network Magic TECHNOLOGY

< Back Next > Cancel

The screenshot shows a software window titled "D-Link Quick Router Setup". The window has a blue header bar with the title and a close button. Below the header, the "D-Link" logo is on the left and "Quick Router Setup" is on the right. A vertical sidebar on the left contains a list of steps: "welcome", "check connection", "install router" (highlighted in green), "configure router", and "configure home network". The main area displays "step 1/5" in green, followed by the instruction "First turn off or unplug power to your cable or DSL modem." Below the text is a diagram showing a grey cable modem on the left connected to a grey D-Link router on the right with a green Ethernet cable. A power cord is also plugged into the router. At the bottom right of the main area are three buttons: "< Back", "Next >", and "Cancel". In the bottom left corner of the window, there is a logo for "Network Magic TECHNOLOGY".

D-Link Quick Router Setup

D-Link Quick Router Setup

step 2/5

Now unplug the existing ethernet cable from your cable or DSL modem and plug it into **blue port number 1** on your new D-Link router.



Network Magic TECHNOLOGY

< Back Next > Cancel



Quick Router Setup

welcome

check connection

install router

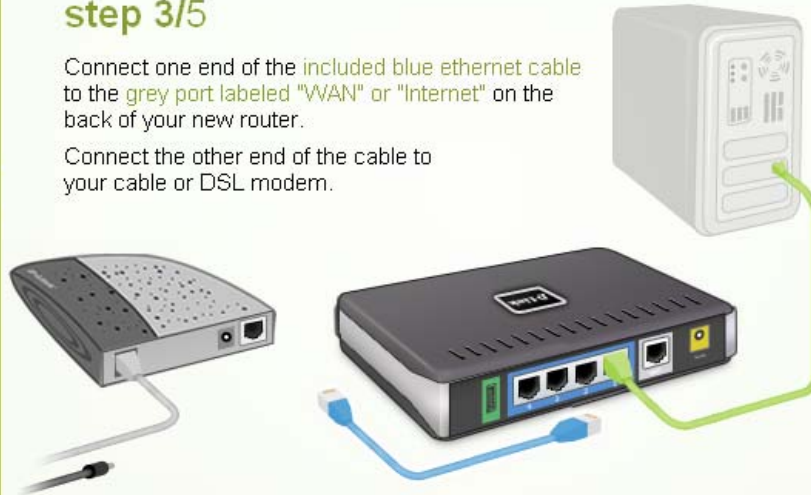
configure router

configure home network

step 3/5

Connect one end of the included blue ethernet cable to the grey port labeled "WAN" or "Internet" on the back of your new router.

Connect the other end of the cable to your cable or DSL modem.



< Back

Next >

Cancel

D-Link Quick Router Setup

D-Link Quick Router Setup

step 4/5

Reconnect the power supply to your cable or DSL modem.

Wait 30 seconds for the modem to startup before continuing.



Network Magic TECHNOLOGY


< Back Next > Cancel

D-Link Quick Router Setup

D-Link Quick Router Setup

step 5/5

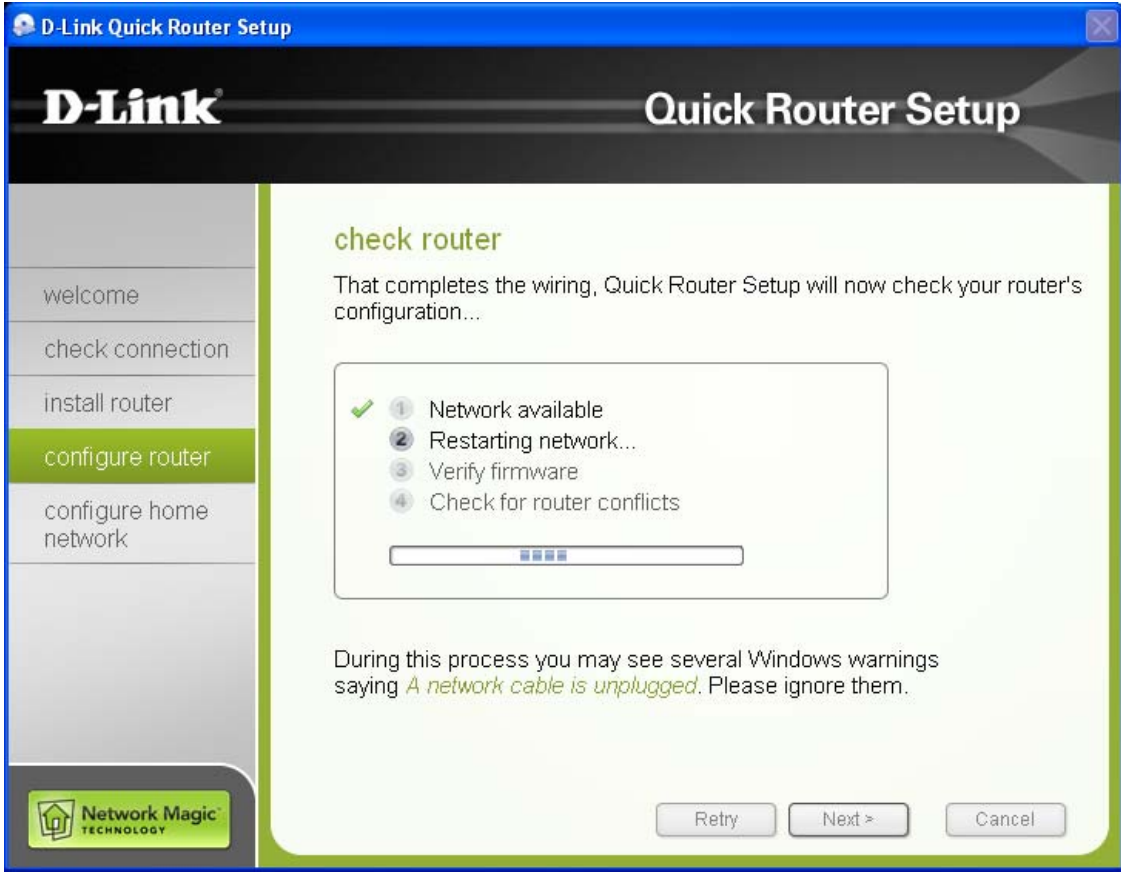
Now connect the **included power supply** from an available outlet to your new D-Link router.



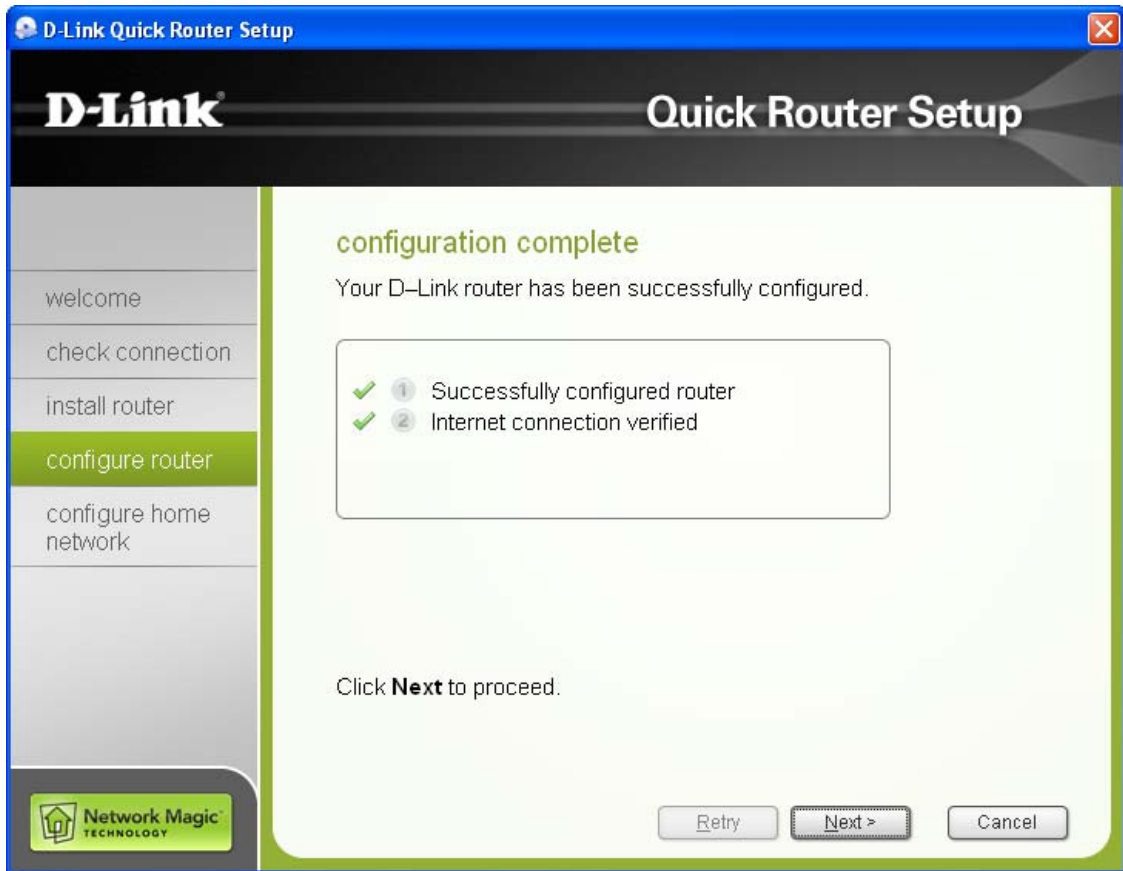
Network Magic TECHNOLOGY

< Back Next > Cancel

The image shows a software window titled "D-Link Quick Router Setup". On the left is a navigation menu with options: "welcome", "check connection", "install router" (highlighted in green), "configure router", and "configure home network". The main area displays "step 5/5" with instructions to connect the power supply. An illustration shows a white computer connected to a black D-Link router via a blue Ethernet cable, and the router connected to a power supply unit via a green power cable. At the bottom right are three buttons: "< Back", "Next >", and "Cancel". The "Network Magic TECHNOLOGY" logo is in the bottom left corner.







When using bridge modem

D-Link Quick Router Setup

D-Link Quick Router Setup

- welcome
- check connection
- install router
- configure router**
- configure home network

enter internet account details

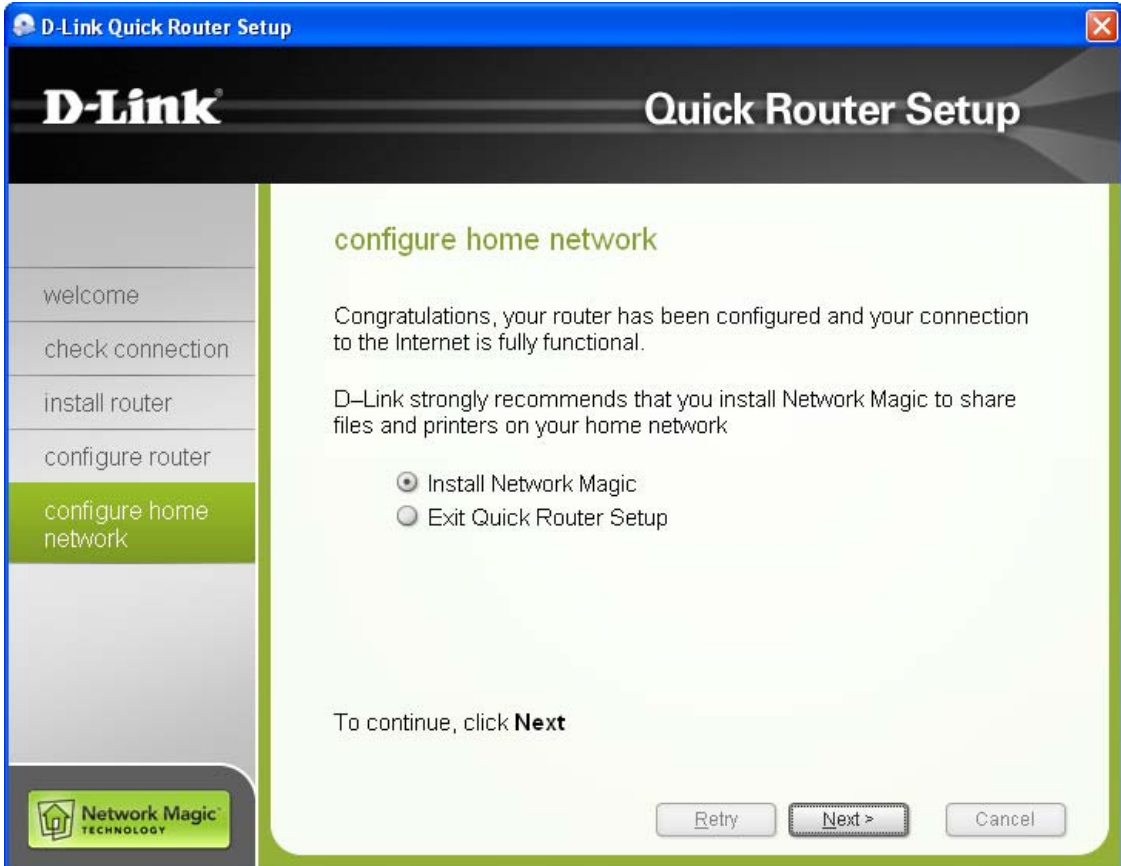
In order to set up your connection to the Internet, Quick Router Setup needs the account name and password you use to connect to your Internet Service Provider (ISP).

Your account name is usually of the form "name@ISPname.net".

Account Name

Password





D-Link

Quick Router Setup

welcome

check connection

install router

configure router

configure home network

configure home network

Congratulations, your router has been configured and your connection to the Internet is fully functional.

D-Link strongly recommends that you install Network Magic to share files and printers on your home network

- Install Network Magic
- Exit Quick Router Setup

To continue, click **Next**

Retry

Next >

Cancel



D-Link Quick Router Setup


D-Link Quick Router Setup


- welcome
- check connection
- install router
- configure router
- configure home network**

installing network magic

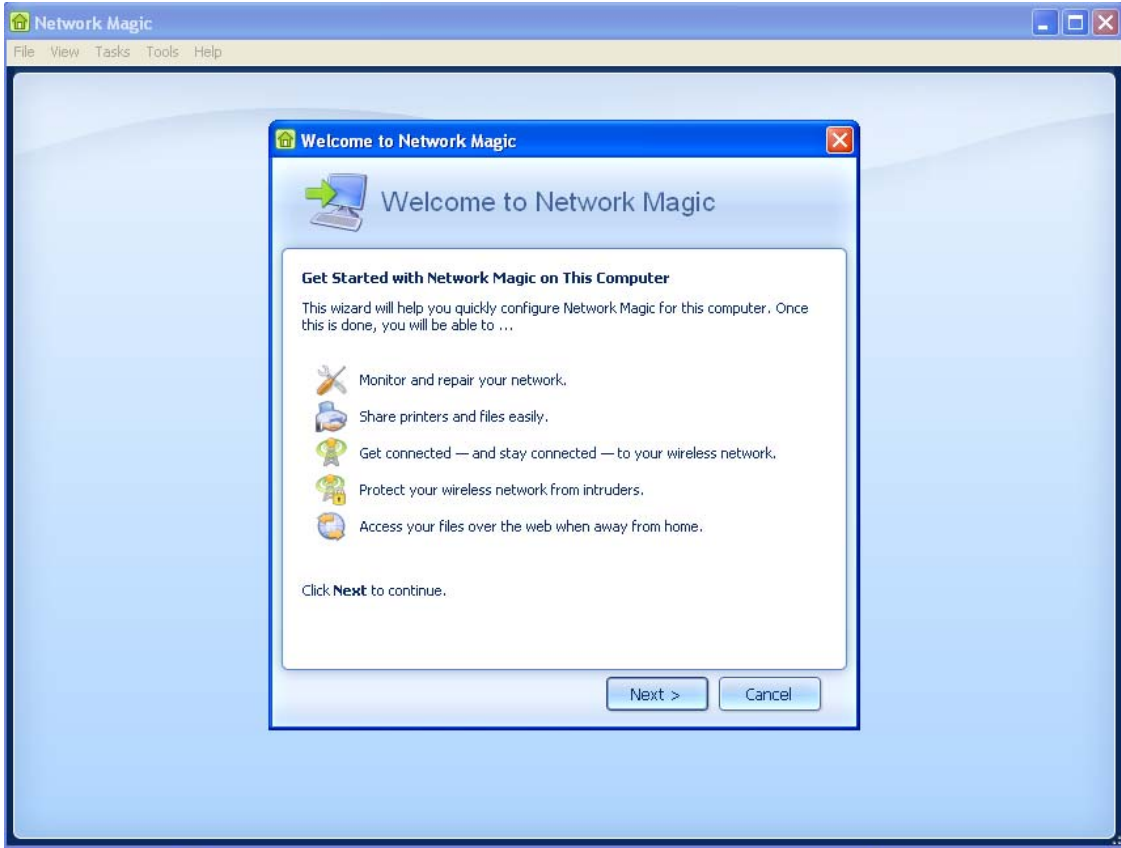
Network Magic works with your D-Link router to set-up, manage, repair and protect your home network.

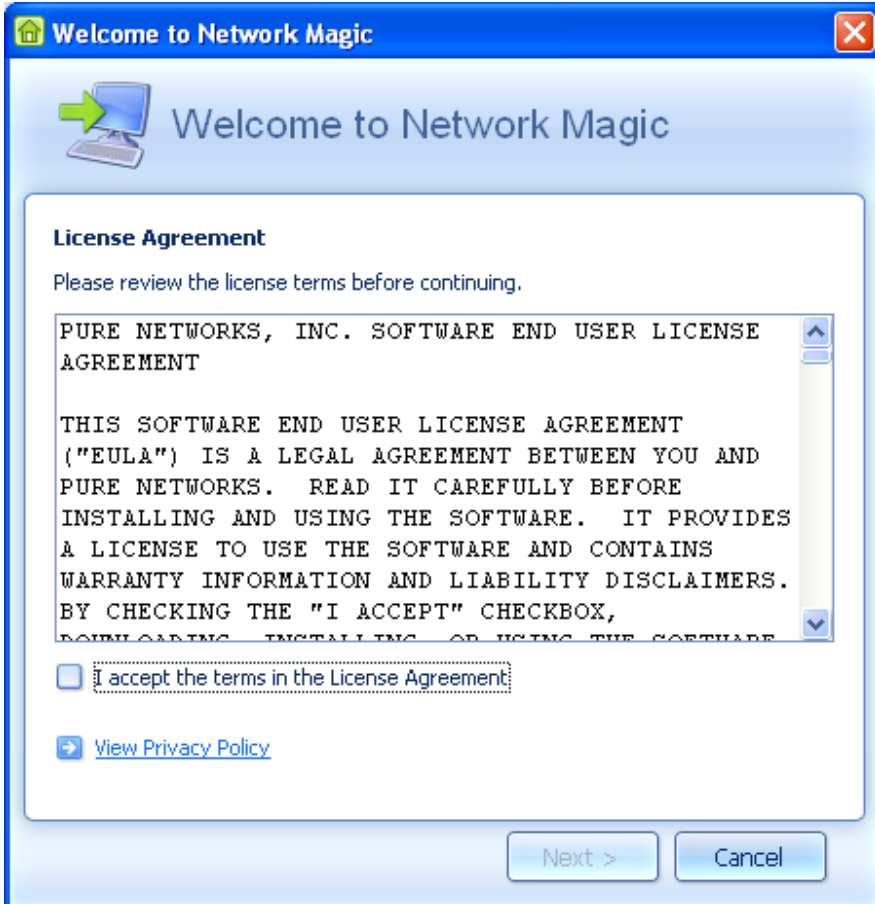
- Manage your entire network on one screen
- Protect your Wi-Fi network from intruders
- Monitor network activity and status
- Automatically share printers
- Share files and media across all PCs and devices
- Troubleshoot and repair problems quickly

 Please wait while Network Magic is installed...

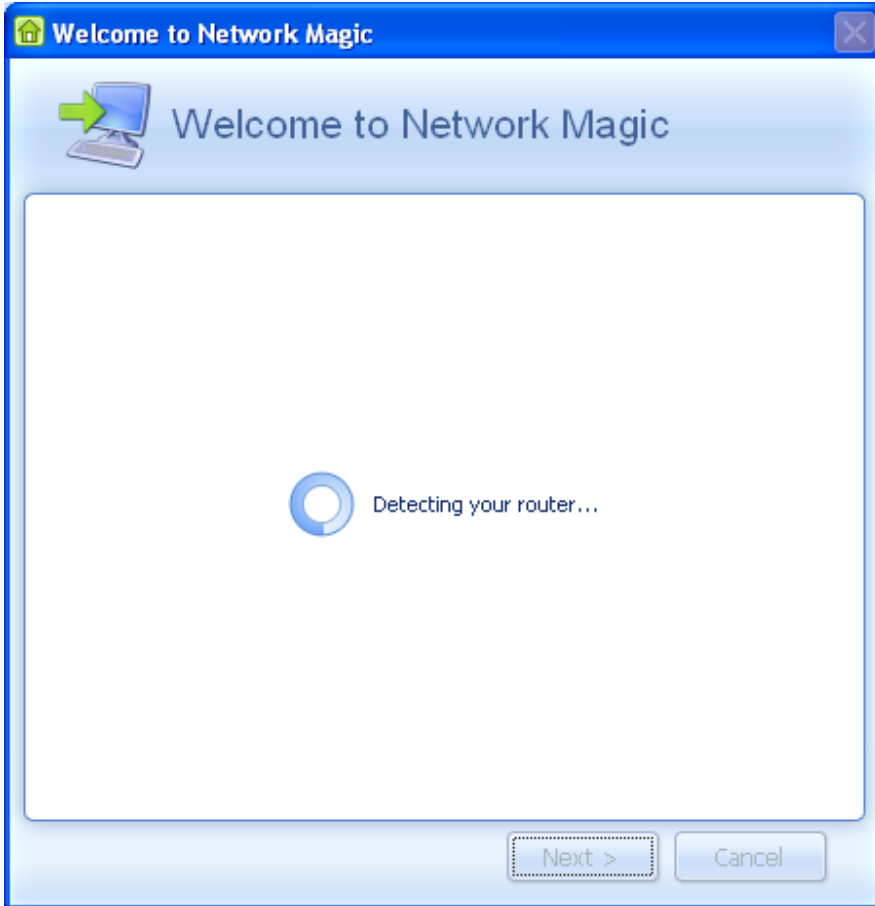
 **Network Magic**
TECHNOLOGY

Retry Next > Close










Welcome to Network Magic



Welcome to Network Magic


Give Your Computer a Friendly Name

A friendly name like "Dad's Laptop" or "Kitchen PC" will help identify your computer on the Network Map and make it easier to recognize when sharing files and printers.

Friendly name:

Next > Cancel

Welcome to Network Magic



Welcome to Network Magic


Start Your Trial of Network Magic Premium

After your trial expires, purchase Network Magic to keep all the great Premium services or continue using Network Magic Basic.

Feature	Premium	Basic
File Sharing	✓	
Printer Sharing	✓	
Remote Access to Home Network	✓	
PC Shield	✓	
Network Health and Security Alerts	✓	✓
Wireless Protection	✓	✓
Wireless Intruder Detection	✓	✓
Connection Repair	✓	✓
Network Map	✓	✓
Product Updates	✓	✓

Next > Cancel

Welcome to Network Magic



Welcome to Network Magic

Please Enter Your Email Address

In order to start the trial of Network Magic Premium, please enter your email address:

Email:

Contact me about product updates, news and offers

[View Privacy Policy](#)

