

Panasonic
ideas for life

CHANGING PHOTOGRAPHY

LUMIX G

Photo: Daniel Berehulak



GH3



G5



GX1



GF5

LUMIX G BROCHURE 2012/2013

1st MIRRORLESS

World's 1st DSLM Digital Single Lens Mirrorless live view camera
introduced by Panasonic on 12/09/2008

LUMIX G

MIRRORLESS PHOTOGRAPHY. THE CONCEPT OF THE FUTURE

CHANGING PHOTOGRAPHY



LUMIX G5 with LUMIX G VARIO 7-14 at 13mm, 1/2000 at F4.0, ISO 320

LUMIX G – Changing Photography

1st MIRRORLESS

World's 1st DSLM Digital Single Lens Mirrorless live view camera
introduced by Panasonic on 12/09/2008

The DMC-G1 revolutionised the arena of DSLR cameras when it was first launched in September 2008. The world's first Micro Four Thirds System camera, it eliminated the need for a mirror box and optical viewfinder unit – resulting in an extremely compact and lightweight camera body.

LUMIX G is committed to changing photography as we continue to create innovative, high-performance cameras and lenses to meet this new-generation standard.

Are you looking for excellent picture quality to capture those precious moments?

Do you want easy access to many functions?

Do you want a camera that's ready to go at any moment?

Do you want to change your photography for the better?

Enter LUMIX G – the next generation camera.

The secret behind the LUMIX G is an entirely new camera concept that, for the first time, offers the high image quality known of DSLR cameras in a compact, accessible package. This innovation has been made possible by a revolution in mirrorless construction – where the image sensor provides the same functionality of the more complex mirror box of conventional systems.

Thanks to this, LUMIX G System Cameras are perfectly easy to handle, lightweight and packed with a huge array of features. So what are you waiting for? Find your camera.

Discover your life. And change your photography.

With LUMIX G from Panasonic.

Larger image sensors for brilliant image quality

The incredible image quality of our new LUMIX G cameras starts with the large Live MOS Micro Four Thirds Sensor. The sensor – which is eight times bigger than those of common compact cameras – enables crystal-clear shots. This is because each single pixel is bigger and, therefore, receives more light when the shutter is released. This technology is the source of brilliant images with clean colours, enhanced detail and no noise. It's time to give your creativity free rein – for example, play with the depth of field to bring your subjects sharply into focus so every detail is clear against a blurred background.



Ultrasonic dust cover – a clean sensor for polished images

Brush that dust away! The automatic Supersonic Wave filter, integrated into LUMIX G models, sweeps at 50,000 vibrations per second – removing dust particles from the sensor almost before they've settled on it. This means you can easily change lenses without having to worry about dust distorting your images – no matter where you are.



High-Speed Venus Engine

In addition to the high-speed signal processing of its three processors, the Venus Engine image processor boasts excellent performance with the adoption of noise reduction technology for even higher image quality.



Electronic Viewfinder for Complete Image Control

100% field of view. Ultra-sharp resolution.

You want 100%? Well, you don't have to look for it any longer. The LUMIX G masters perfect precision – a feat, till now, only achieved by very expensive and enormous single-lens reflex cameras. What you see through the Live Viewfinder and on the LCD display comes directly from the sensor – and is exactly what the lens 'sees' too. This means 100% field of view without any loss, even at the edges. With view-finder enlargement, your choice of subjects becomes even greater – with an effective magnification factor of 0.7, the G5 displays a slightly larger image in the viewfinder, something that is usually only achieved by professional single-lens reflex cameras. Photograph exactly what you see in your viewfinder, nothing more and nothing less.

The new Live Viewfinder not only offers you 100% field of view, it also shows you the effect of changes in white balance, colour effects, exposure – and perhaps most importantly of all, recording functions. So you can concentrate on the essentials without taking the camera away from your eye to check on settings or photos that you've taken.

Brilliant views with LUMIX G

Never again will you miss a detail when you look through the viewfinder. Live View provides you with 100% field of view for complete image control – and with 1.44 megapixels¹, you will achieve ultra-sharp resolution.



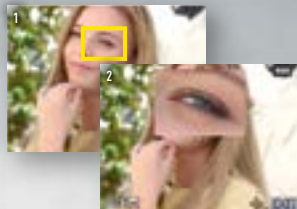
Incomplete field of view with single-lens reflex cameras

When compared with the new LUMIX G, single-lens reflex cameras can have only 95% field of view. This results in the periphery of images being lost – so your images are not exactly what you intend them to be and your control over them is limited.



Full Control

Compared to a single-lens reflex camera, image details are displayed with even more magnification in the LUMIX G viewfinder – which is especially great for manual focusing.



1 MF-MAGNIFIER - THE LUMIX G VIEWFINDER WORKS PERFECTLY.

2 A MAGNIFIED FOCUS AREA ALLOWS FOR MORE EXACT FOCUSING.

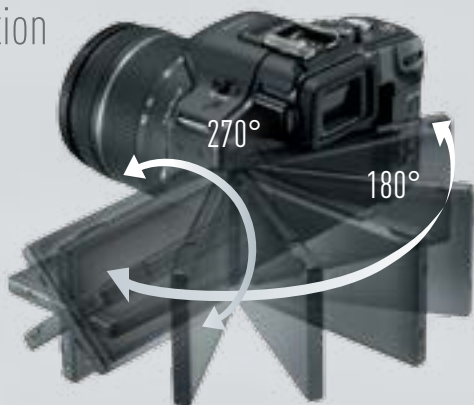


¹RGB-representation with 800x600 pixels and ultra-fast 60B/s. The human eye sees an image in 1.44 megapixels.

Swivel Display with Touch Function

New perspectives – flexible 7.5cm LCD

Give your movies and photos a new perspective. The LUMIX G camera models offer you a host of new possibilities with 270° vertical, 180° horizontal turntable displays. This flexibility offers you the freedom to shoot an unusual perspective from a relaxed posture – the days of bending over sideways to get a good angle of your little son are over. Just shoot right from your hip as you look down comfortably at the display. The 7.5cm (3-Inch) display has a brilliant resolution and 100% field of view so you can stage your photo perfectly. And when you're done, you can fold the display inwards to prevent it from getting dirty or scratched. Now that's pretty convenient!



Floor Shot

- Unusual Perspectives
- Perfect for Macro Shots



Central Shot

- Shooting in a Relaxed Posture
- Ideal for Shots of Children
- Perfect for Steady Video Recording
- Shooting from a Tripod

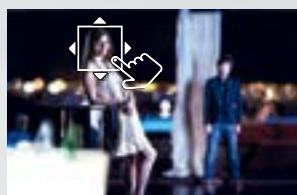


Overhead Shot

- Unusual Shots from Above
- Perfect for Shooting, for example, Above a Crowd

Touch Operation

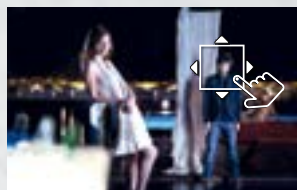
The way we see it, using a system camera with various settings and recording options has to be one thing: easy – and thus, quick. With this in mind, we allowed our development of the controls on the new LUMIX G camera models to be inspired by devices with touchscreens. The LUMIX screen is more than just a display – with a tap on its surface it becomes a touchpad! And in this way, you can very quickly focus or zoom in on specific image details. Especially convenient, is the AF Tracking function – with moving images, it automatically follows the subject you have selected. And for those who want it easier still, you can click the shutter and take a photo simply by touching your selected subject on the screen. Easy, isn't it?



TOUCH A SUBJECT TO PUT IT IN FOCUS

Intuitive Touch-Control Shooting

Just touch the subject you want to have in focus on the large high-resolution LCD – the full-area AF immediately puts it in focus. You can even release the shutter with a single touch. Once you touch your subject on the screen, the AF Tracking function will keep it in focus for the perfect shot.



TOUCH THE SCREEN ELSEWHERE AND THE FOCUS SHIFTS

AUTOFOCUS – FAST AND PRECISE

CHANGING PHOTOGRAPHY **G**



LUMIX G5 with LEICA DG SUMMILUX 25, 1/800 at F3.5, ISO 160

Sharp in the smallest of details

Want sharper images? Conventional single-lens reflex cameras use phase detection systems with separate autofocus – bringing up constant inaccuracies because of mechanic limitations. The Contrast AF function of Panasonic cameras, however, eliminate this issue – using an autofocus with intelligent sensors that quickly and precisely determine contrast values and ensure sharpness. Thanks to this technology, LUMIX G system cameras are capable of achieving excellent images for movies and photography, even when shooting with bright aperture lenses that are particularly susceptible to blurriness. So, while a conventional phase detection autofocus with an aperture of F1.4 has a hit ratio of no more than 60%, a LUMIX G system camera hits the sharp spot more than 90% of the time. Sharp enough?

Light Speed AF

LUMIX G Cameras feature an extremely fast autofocus thanks to the high synchronisation speed of lens and sensor of 120fps. The accuracy and speed of the G System advanced contrast autofocus outdoes that of even high end digital SLRs with phase difference AF systems.

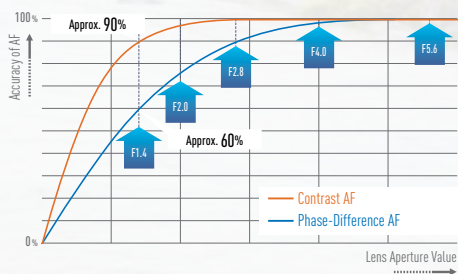


LIGHT SPEED AF



Precise Contrast AF

Compared with the phase-difference AF System, the Contrast AF of the LUMIX G boasts higher accuracy even when shooting. The phase-difference AF system is susceptible to mechanical margin of error. However, with the Contrast AF System, focusing is controlled by the image sensor – eliminating any margin of error so you can achieve clear shots.



AF Tracking

When this function is on, the autofocus follows the subject you have selected (such as a ball) as it moves through the scene. This is especially of great advantage when you are recording a video.



THE WORLD IN MOTION

CHANGING PHOTOGRAPHY **G**

LUMIX G5 with LUMIX G VARIO 12-35 at 20mm, 1/2000 at F2.8, ISO 400

HD Video Support – Ready, set ... action! It's time for outstanding movie-making



Do you just love thrilling documentaries? Well, why don't you shoot one yourself? The LUMIX G will turn you into a top-notch director and let you easily shoot movies ready for the big screen – thanks to excellent full HD quality and easy operating modes. Just one touch on the dedicated movie button and filming starts just like that. Intelligent Auto Mode (iA) evaluates the ambient situation and automatically chooses the appropriate shooting mode – and face detection means that all your subjects will always be in focus. If you can't get enough of playing director, you can simply select to film in AVCHD-format to save on storage space. That means double the recording time with no compromise on picture quality. Now all you have to do is say: "Action!"

LUMIX G video functions

- ☒ Instant Video Recording via Dedicated Video Button
- ☒ Fast, Continuous Autofocus for Moving Subjects
- ☒ Autofocus Tracking of a Single Subject while Filming (perfect for novice filmmakers)
- ☐ Built-in Stereo Microphone
- ☐ Intuitive and Quick Operation via Touchscreen
- ☐ AVCHD Recording for Long Recording Times with Perfect Picture Quality
- ☐ Easy Playback on TV Screen via SD Memory Card-slot or HDMI





iA Plus Mode with Easy Manual Adjustment



iA (Intelligent Auto) Plus will satisfy experienced photographers, yet is also easy enough for beginners to use comfortably when both photo and video recording.

The defocusing area, exposure compensation and white balance can be adjusted for scenes where a slight manual adjustment may bring better results. Just move the slider with your finger.



Creative Control

While experienced photographers enjoy the manual control options of LUMIX G Compact System Cameras, everyone else will appreciate the intuitive iA Plus functions that make creating fantastic images a breeze. LUMIX G cameras come with many filters so you can best express your creativity and make your images even more impressive. You can also apply the filters when video recording.

RETRO

SEPIA

HIGH KEY

HIGH DYNAMIC

EXPRESSIVE





DMC-GH3

Picture Motion Perfection

| PAGE 14 ► |



DMC-G5

Ready for Everything

| PAGE 16 ► |



NOW IS THE TIME TO FIND THE PERFECT FIT

CHANGING PHOTOGRAPHY **G**



DMC-GX1

High-Quality DSLM-Camera

| PAGE 18 ▶



DMC-GF5

Compact and Capable

| PAGE 20 ▶

LUMIX GH3

Comes with a Movie Camera Inside

If you are dreaming of the best possible tool for creative photography and filming, take a look at the new LUMIX GH3. Its weatherproof body and high-end technology delivers perfect, professional results in all conditions.

DMC-GH3

AVAILABLE COLOURS:



more details on: www.panasonic.eu



The New LUMIX GH3. Picture Motion Perfection

- 16M Digital Live MOS Sensor & Venus Engine 7 FHD with ISO 100 to 12,800
- Solid Magnesium Body with Sealing Against Dust and Moisture
- MP4/AVCHD Progressive 50p Full HD Video and many Connectivity features
- Entirely New Shooting Styles thanks to WiFi Connectivity and Silent Shooting
- High Resolution Free-angle Touch OLED LCD and 1.7m dot OLED EVF
- 20 fps High Speed Shooting (6fps in full resolution)

DMC-GH3





WiFi

Get Connected

The WiFi capability of the new GH3 will change the way you control your camera and view and share photos and movies. Use the remote shutter release including Liveview while shooting. Check sharpness and composition of your pictures and add geotagging using a tablet computer or smartphone. View pictures on a large TV screen easily or share on your favourite social networks with just a swipe. Convenient storing of your files on a computer or in the Panasonic Cloud Service is also part of the WiFi functionality.



Full HD Filming

FULL HD Filming

You want to do more than just take photos? You want to make movies? The GH3 is the multi-talented Panasonic system camera for you. It not only has all the features of a premium camera, but also has all the technology for professional Full HD film recording. For example, the built-in stereo microphone enables crystal clear, low-noise audio recording and HDMI capability allows fast playback on a TV. Of course, a flexible display with touch function completes the package. The only downside? Once you get your hands on it, you won't ever want to put it down.



Weather Sealing

Safe in Dust or Rain

There's no longer any need to worry about your precious camera equipment in demanding environments. The new GH3 comes with an all-weather seal that protects its buttons and joints from moisture and dust. The new 12-35mm and 35-100mm zoom lenses are also sealed, providing the perfect choice for a photography kit that is as ready as you are to get shooting – rain or shine, whatever environment you find yourself in.



The New LUMIX G5. Ready for Everything

- 16M Digital Live MOS Sensor & Venus Engine 7 FHD with ISO up to 12,800
- Up to 20fps Burst Shooting (6fps in Full Resolution)
- Full HD Video in MP4 and AVCHD Progressive 50p
- Super Fast and High Precision Autofocus
- High Resolution Free-angle Touch LCD and EVF
- Electronic Shutter for Noise-free Shooting

LUMIX G5

Find Your Creativity

It's good to have a lot of options at hand: A high-resolution viewfinder, a swivel display, intelligent Auto functions – and lots of sophisticated settings. The new LUMIX G5 offers everything you need to take stunning photographs.

DMC-G5

AVAILABLE COLOURS:



more details on: www.panasonic.eu



Live View Finder

Live Viewfinder: 100% Field of View with 1.4 Megapixel Resolution

The LUMIX G5 pays attention to detail – and the new Live Viewfinder shows you the perfect overview. Even the smallest details appear ultra-sharp thanks to the 1.4 megapixel¹ resolution. The finder shows you a magnified view so that you won't miss a thing. Let the details come out on top. Just like your images.

¹RGB-representation with 800x600 pixels and ultra-fast 60B/s. The human eye sees an image in 1.44 megapixels.



Silent Shutter

Silent Shooting

Because of their mechanical shutters, many advanced camera systems have a distinctive sound at shutter release. But in many circumstances, like when shooting in a museum or during a concert, this shutter sound can be disturbing, making it impossible to use a high quality camera. With the LUMIX G5, you can finally take advantage of all those photo opportunities you've had to pass on till now. Just set the shutter release to "electronic" and the camera will make virtually no sound at all while shooting. The extremely silent AF system of the LUMIX G lenses also helps you shoot in silence.



Function Lever

New Lever, more Control

The LUMIX G5 swivel screen makes it easy to shoot from exciting perspectives – whether from overhead or close to the ground. With many cameras, it can be difficult to operate the zoom from these extreme positions. The LUMIX G5 is the only system camera with an additional zoom lever next to the shutter release. Right on the camera body, the lever allows you to control Powerzoom Lenses very precisely. The lever is even customisable and can take on several functions – so you can control all your shots with hardly any effort.

LUMIX GX1

The Photographer's Camera

Created for the demanding photographer, with an image sensor that captures the finest details and a high-performance engine to minimise noise. The LUMIX GX1 combines a compact, flat design and easy-to-access manual controls.

DMC-GX1

AVAILABLE COLOURS:



more details on: www.panasonic.eu



The LUMIX GX1. High-Quality DSLM-Camera

- 4/3-Type, 16-Megapixel Live MOS Sensor
- Super Fast and Precise Contrast AF System
- High-Sensitivity of up to 12,800 ISO
- 7.5cm (3-Inch) Wide-Viewing LCD with 460K-Dot Resolution and Touch Operation
- 20fps of Burst Photography (4,2fps in Full Resolution)
- Built-In Pop-Up Flash (GN7,6)



Live View Finder

Optional Electronic Live Viewfinder – DMW-LVF2

With the new, optional electronic Live Viewfinder, you'll always be able to see your subject clearly, even in difficult lighting conditions. The DMW-LVF2 can simply be stacked on to the accessory shoe – and the compact GX1 will receive an enlarged (0.7x) image with a brilliant 1.4 million pixels and 100% field of view. An especially convenient function, the viewfinder can be tilted up to 90°, thus enabling shots even from low perspectives – so you can enjoy great images, no matter how the light falls.



Power Zoom

Power Zoom with Lever

The pancake lens with power zoom helps you attain image perfection even in the smallest of rooms. At just 3cm in width, the H-PS014042 is the perfect companion to the GX1. How does it work? When it's switched on, the lens automatically moves out. The new automatic power zoom saves a lot of space, zooming out with the lens as if by magic. Simply push the small lever on the right side and the GX1 will consistently zoom in on every small detail. Now, that's just cool.



Pop-up Flash

Integrated Pop-up Flash

The GX1 accomplishes a real feat. This little professional model hides away a little pop-up flash – now you see it, now you don't. It's extremely convenient to always have this tiny accessory on hand wherever you go. That's some well-exposed snapshots right in your pocket. So taking photos is not a difficult project – it's just a fun one.



The LUMIX GF5. Compact and Capable

- 12M Digital Live MOS sensor with up to 12,800 ISO
- Fun and easy to use with new GUI and Intelligent Auto Mode
- Full HD AVCHD Video with 25p
- Super Fast and High Precision Autofocus
- High Resolution 7.5cm (3-Inch) Touch LCD

LUMIX GF5

A Small Tool for Great Images

Stunningly slim and compact: capture every beautiful moment with the smallest and lightest LUMIX G Camera ever, without making any compromises in picture quality or versatility. The GF5 is the perfect combination of a capable camera system and compact size.

DMC-GF5

AVAILABLE COLOURS:



more details on: www.panasonic.eu



Pop-up Flash

Compact Wonder

Despite an ultra-slim body, this little camera shows off a large LC display with easy-to-use touch functions – and on top of all that, it also boasts its very own foldout flash. It's there when you need it, tucked away when you don't – leaving room for all your creative shots.



Creative Modes

Creative Control

The DMC-GF5 comes with 14 filters so you can express your creativity just as you want to – making your images even more impressive. You can also apply these filters when video recording.

* Star Filter and Soft Focus are not available in video recording.

** Sound will not be recorded with Miniature Effect in Creative Control Mode and approximately 1/10 of the time period is recorded. (If you record for 10 minutes, the resulting motion picture recording will be approximately 1 minute long.)



Touch Screen

Forget Complicated

Operating the LUMIX GF5 is as intuitive as operating a smartphone. With just one swift movement, you can transform the large 7.5cm [3 inch] LC display into a touchpad. From this you can control everything else – for example, put your subject quickly into focus or scroll through all your shots with just one finger and delete the ones you don't want right from the screen. All of this and more, simply achieved with a few taps on your display. Just follow your intuition.

Small Lenses – Great Freedom

We always want to hold on to those perfect moments in our life. Thanks to the newest range of lenses from Panasonic, this has become easier than ever. When special moments pop up out of the blue, you can quickly and easily capture them with LUMIX G cameras. Thanks to Micro Four Thirds Standard, our small lenses are able to maintain the same luminosity and quality of larger, professional cameras – so that you aren't weighed down but still have all the freedom and opportunities enjoyed by the experts.

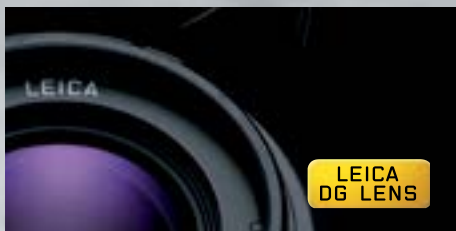
Panasonic Lens Technology

With LUMIX G, everyone finds what they're looking for. A range of 15 lenses means you can choose from traditional LEICA DG lenses, our new and incredibly compact LUMIX G "X" lenses or more standard lenses – so that you can perfectly fulfil your photo equipment needs.



LEICA DG Lenses

Anyone who wants top quality opts for LEICA. With special multi-coated surfaces, these aspheric lenses meet the high expectations of the traditional LEICA Camera AG. The complex structure of the lenses enables brilliant acuity and also prevents distortions in wide-angle shots – so that lines are displayed exactly as you'd see them in real life. That means superb images without reflection or backscatter.



LUMIX G Lenses

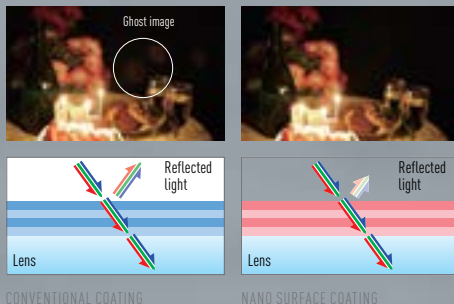
LUMIX G lenses make things easy for you. Micro Four Thirds Standard technology means that we can develop lenses that are much smaller and lighter even while maintaining the highest standards of luminosity and quality – meaning that you can enjoy increased flexibility when you shoot. Has the "X" caught your attention yet? It stands for a new product line, one that is characterised by innovative digital technology, the highest of optical quality and pioneering Nano Surface coated lenses. That makes an "X" lens the perfect team player – and your perfect companion. Whether macro, wide-angle or fisheye, LUMIX G lenses create great scope – without taking up too much space themselves.



See the Details

Nano Surface Coating

Have you had enough of annoying light reflections ruining your photos? Using the Panasonic Nano Surface coating technology, we apply a very thin film with an ultra-fine nano-structure and minimum refraction index to our lenses – greatly reducing reflection and eliminating ghost images. That means you'll get crystal-clear images with sharp details, even when you shoot bright subjects in the dark.



Power Zoom Lenses

The new LUMIX G power zoom lenses are way ahead of their time. The pancake and tele power zoom lenses are available, for the first time ever, as fully automatic built-in motor zooms. The tele power zoom also doubles as a manual zoom – but since the zoom is manipulated at the lens, it works easily. This results in a visible improvement in zooming, in turn also offering real advantages for filming. For example, you can determine the zoom speed to precisely capture your subjects even with slow zoom – or use the gradual zoom function to seamlessly approach the subject. Focus can also be quickly adjusted using a lever (Pancake Powerzoom) or focus ring (Tele Powerzoom). And all this can be controlled comfortably from the LC camera display as well. One thing's for sure: with the power zoom, getting up close to your subject – even when filming – will never be a nerve-wracking thing again.



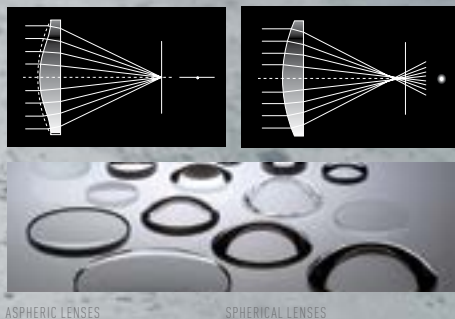
Multi-Coating

The multi-coating process works to seal surfaces. During a multiple lamination process, nano-structures are applied to lenses to prevent shadows and glare from appearing in photos. This is especially good for lenses with a large curvature (e.g. wide-angle and fisheye) because their shape means they are exposed to extreme lighting angles. The multi-coated lens surface acts like a shield to prevent excess light from getting in – resulting in exquisitely sharp images of the highest quality.



Aspheric Lenses

Panasonic lenses are extremely small and yet offer superb image quality. A single aspheric lens has the same effect as several spherical lenses – which means they are lighter and take up less space. Panasonic has perfected this costly manufacturing process – a venture rarely undertaken by other lens manufacturers – and also applies it to a wide range of lenses. This process not only increases the magnifying capability of the lenses, but typical issues that occur in the production of spherical lenses, such as contortions, are also avoided – ensuring that all your shots are simply magnificent.





H-Y501410 - 1/40 sec. F5.8

Power Zoom Lenses

H-HS12035



LUMIX G X Wide Angle Power Zoom Lens 12-35mm

- 12-35mm Focal Length (24-70mm full frame equivalent) with Zoom Motor
- F2.8 Max. Aperture
- POWER O.I.S. Image Stabilisation
- 4 Aspherical Lenses, 1 UHR Lens, 1 UED Lens
- Length: 90mm, Weight: 305g
- 58mm Filter Size
- Sealed Against Dust and Moisture

H-PS014042



LUMIX G X Retractable Power Zoom Lens 14-42mm

- 14-42mm Focal Length (28-84mm full frame equivalent) with Zoom Motor
- F3.5-5.6 max. Aperture
- POWER O.I.S. Image Stabilisation
- 4 Aspherical Lenses, 2 UED Lenses
- Lens Retracts When Not in Use
- Length: 27mm, Weight: 95g
- 37mm Filter Size

Zoom Lenses: Maximum Versatility

Zoom lenses are a central part of any photographer's equipment – you can find the perfect frame for your image by simply zooming in or out. A standard zoom lens already covers focal lengths from wide angle to portrait, a telephoto zoom is perfect for nature or sports.

Standard Zoom Lenses

H-FS014042



LUMIX G Standard Zoom Lens 14-42 mm

- 14–42mm Focal Length
(28–84mm full frame equivalent)
- F3.5–5.6 max. Aperture
- MEGA O.I.S. Image Stabilisation
- 1 Aspherical Lens
- Length: 64mm, Weight: 165g
- 52mm Filter Size



H-FS014045



LUMIX G Standard Zoom 14-45mm

- 14–45mm Focal Length
(28–90 mm full frame equivalent)
- F3.5–5.6 max. Aperture
- MEGA O.I.S. Image Stabilisation
- 1 Aspherical Lens
- Length: 60mm, Weight: 195g
- 52mm Filter Size



H-VS014140



LUMIX G HD Movie Zoom 14-140 mm

- 14–140mm Focal Length
(28–280mm full frame equivalent)
- F4–5.8 max. Aperture
- MEGA O.I.S.
- 4 Aspherical Lenses, 2 ED Lenses
- AF Actuator: Linear Motor
- Length: 84mm, Weight: 460g
- 62mm Filter Size





Power Zoom Lenses

H-HS35100



LUMIX G X Telephoto Power Zoom Lens 35-100mm

- 35-100mm Focal Length (70-200mm full frame equivalent)
- F2.8 Max. Aperture
- POWER O.I.S. Image Stabilisation
- 1 UED Lens, 2 ED Lenses
- Length: 99.9mm, Weight: 360g
- 58mm Filter Size
- Sealed Against Dust and Moisture

H-PS45175



LUMIX G X Telephoto Power Zoom Lens 45-175 mm

- 45-175mm Focal Length (90-350mm full frame equivalent) with Zoom Motor
- F4-5.6 max. Aperture
- POWER O.I.S. Image Stabilisation
- 2 Aspherical Lenses, 2 ED Lenses
- Length: 90mm, Weight: 210g
- 46mm Filter Size

Telephoto Zoom Lenses

H-FS45150



HD
Video Support



LUMIX G Telephoto Zoom Lens 45-150mm

- 45-150mm Focal Length
(90-300mm full frame equivalent)
with Zoom Motor
- F4-5.6 Max. Aperture
- MEGA O.I.S. Image Stabilisation
- 2 Aspherical Lenses, 1 UHR Lens
- Length: 73mm, Weight: 200g
- 52mm Filter Size



H-FS045200



HD
Video Support

LUMIX G Tele Zoom Lens 45-200mm

- 45-200mm Focal Length
(90-400mm full frame equivalent)
- F4-5.6 max. Aperture
- MEGA O.I.S. Image Stabilisation
- 3 ED Lenses
- Length: 100mm, Weight: 380g
- 52mm Filter Size



H-FS100300



HD
Video Support

LUMIX G Super Tele Zoom Lens 100-300mm

- 100-300mm Focal Length
(200-600mm full frame equivalent)
- F4-5.6 max. Aperture
- MEGA O.I.S. Image Stabilisation
- 1 ED Lens
- Length: 126mm, Weight: 520g
- 67mm Filter Size





LEICA Lenses with Fixed Focal Length

H-ES045E



LEICA DG Macro Elmarit Lens 45mm

- 45mm Focal Length (90mm full frame equivalent)
- F2.8 max. Aperture
- MEGA O.I.S. Image Stabilisation
- 1 Aspherical Lens, 1 UED Lens
- Length: 63mm, Weight: 225g
- 46mm Filter Size

H-X025



LEICA DG SUMMILUX Lens 25mm

- 25mm Focal Length (50mm full frame equivalent)
- F1.4 max. Aperture
- Nano Surface Coating
- 2 Aspherical Lenses, 1 UHR Lens
- Length: 55mm, Weight: 200g
- 46mm Filter Size

Pancake Lenses with Fixed Focal Length

H-H020



Bright LUMIX G Pancake Lens 20mm

- 20mm Focal Length (40mm full frame equivalent)
- F1.7 max. Aperture
- Length: 26mm, Weight: 100g
- 2 Aspherical Lenses
- 46mm Filter Size

H-H014



LUMIX G Wide-Angle Pancake Lens 14mm

- 14mm Focal Length (28mm full frame equivalent)
- F2.5 max. Aperture
- Length: 21mm, Weight: 55g
- 3 Aspherical Lenses
- 46mm Filter Size

Special Lenses

H-F007014



LUMIX G Wide-Angle Zoom 7–14mm

- 7–14mm Focal Length (14–28mm full frame equivalent)
- F4.0 max. Aperture
- Length: 83mm, Weight: 300g
- 2 Aspherical Lenses, 4 ED Lenses
- 25cm Minimum Focus Distance

H-F008



LUMIX G Fisheye Lens 8mm

- 8mm Focal Length (16mm full frame equivalent)
- F3.5 max. Aperture
- 180° Angle of View
- 1 UED Lens
- Length: 52mm, Weight: 165g (metal mount)

H-FT012



LUMIX G 3D Photo Lens 12mm

- 12mm Focal Length (65mm full frame equivalent)
- F12 Fixed Aperture
- Length: 21mm, Weight: 45g
- 10mm Stereo Base

DMW-ZL1

Zoom Lever



DMW-FL220

External Flash



DMW-LVF2

Live Viewfinder



DMW-LND62 (62mm)

Neutral Density Filter
Also available in
52/46/37mm



DMW-FL360

External Flash



DMW-MS1

Microphone



DMW-LPL62 (62mm)

Polarised Filter
Also available
in 52/46/37mm



DMW-FL360L

External Flash
(Wireless compatible)



DMW-MS2

Stereo Shotgun
Microphone



DMW-LMCH62 (62mm)

MC Protector
Also available in
52/46/37mm



DMW-FL500

External Flash



DMW-RSL1

Remote Shutter



DMW-GWC1Wide Conversion Lens, from 28mm to 22mm^{1,2}**DMW-GTC1**Tele Conversion Lens, from 84mm to 2.0x 168mm (Tele End)³**DMW-GMC1**Macro Conversion Lens, from 0.34x to 0.7x Macro (Tele End)²**DMW-GFC1**Fish-eye Conversion Lens, to 120° Fish-Eye³**DMW-MA1**Mount Adaptor for Four Thirds Lenses⁴**DMW-MA2M**

Mount Adaptor for LEICA M Lenses

**DMW-MA3R**

Mount Adaptor for LEICA R Lenses

**DMW-TA1**

Tripod Adaptor

**DMW-BGGH3**

Battery Grip

**DMW-BLF19 (for GH3)**

Battery
DMW-BLC12 (for G5/GH2)
DMW-BLD10 (for GX1/G3/GF2)
DMW-BLE9 (for GF5/GF3)





		DMC-GH3	DMC-G5
Type	Recording Media	SD Memory Card, SDHC Memory Card, SDXC Memory Card	SD Memory Card, SDHC Memory Card, SDXC Memory Card
	Image Sensor Size	17.3 x 13.0mm (in 4:3 aspect ratio)	17.3 x 13.0mm (in 4:3 aspect ratio)
	Micro Four Thirds Mount	•	•
Image Sensor	Type	Live MOS Sensor	Live MOS Sensor
	Total Pixels	17.20 megapixels	18.31 megapixels
	Camera Effective Pixels	16.05 megapixels	16.05 megapixels
	Dust Reduction System	Supersonic wave filter	Supersonic wave filter
	Recording File Format	Still Image: JPEG(DCF, Exif 2.3), RAW, MP0 ¹ Motion Image: AVCHD Ver2.0 compliant (AVCHD Progressive), MP4G-AVCHD(264), (MOV, MP4)	Still Image: JPEG(DCF, Exif 2.3), RAW, MP0 ¹ Motion Image: AVCHD (Audio format: Dolby Digital 2ch) /MP4 (Audio format AAC 2ch)
Recording System	Aspect Ratio	4:3, 3:2, 16:9, 1:1	4:3, 3:2, 16:9, 1:1
	Colour Space	sRGB, Adobe RGB	sRGB, Adobe RGB
	Still Image	(4:3) 4608x3456(L) / 3264x2448(M) / 2336x1752(S) / 1824x1368 ¹ (3:2) 4608x3072(L) / 3264x2176(M) / 2336x1500(S) / 1824x1216 ¹ (16:9) 4608x2592(L) / 3264x1840(M) / 1920x1080(S) / 1824x1024 ¹ (1:1) 3456x3456(L) / 2448x2448(M) / 1744x1744(S) / 1712x1712 ¹	
		[Full HD] 1920x1080, 25p (sensor output is 25p, 72Mbps[ALL-Intra]) ¹ [Full HD] 1920x1080, 24p (sensor output is 24p, 72Mbps[ALL-Intra]) ¹ [HD] 1280x720, 50p (sensor output is 50p, 72Mbps[ALL-Intra]) ¹ [Full HD] 1920x1080, 50p (sensor output is 50p, 50Mbps[IPB]) ¹ [Full HD] 1920x1080, 25p (sensor output is 25p, 50Mbps[IPB]) ¹ [Full HD] 1920x1080, 24p (sensor output is 24p, 50Mbps[IPB]) ¹	
		-	
		~ / [Full HD] 1920x1080, 25fps (sensor output is 25p, 20Mbps) ¹ [HD] 1280x720, 25fps (sensor output is 25p, 10Mbps) ¹ [VGA] 640x480, 25fps (sensor output is 25p, 4Mbps) ¹	
		[Full HD] 1920x1080, 50p (sensor output is 50p, 28Mbps) ¹ [Full HD] 1920x1080, 24p (sensor output is 24p, 24Mbps) ¹ [Full HD] 1920x1080, 50i (sensor output is 25p, 24Mbps) ¹ [Full HD] 1920x1080, 50i (sensor output is 50p, 17Mbps) ¹	
		[Full HD] 1920x1080, 50p (sensor output is 50p, 28Mbps) ¹ [Full HD] 1920x1080, 50i (sensor output is 50p) [FSH : 17Mbps] [Full HD] 1920x1080, 25p (sensor output is 50p) [FPH: 17Mbps] [HD] 1280 x 720, 50p (sensor output is 25p) [SH:17Mbps]	
	File Size (pixels)	[Full HD] 1920x1080, 25p (sensor output is 25p, 20Mbps) ¹ [HD] 1280x720, 25fps (sensor output is 25p, 10Mbps) ¹ [VGA] 640x480, 25fps (sensor output is 25p, 4Mbps) ¹	
		[Full HD] 1920x1080, 50p (sensor output is 50p, 28Mbps) ¹ [Full HD] 1920x1080, 24p (sensor output is 24p, 24Mbps) ¹ [Full HD] 1920x1080, 50i (sensor output is 25p, 24Mbps) ¹ [Full HD] 1920x1080, 50i (sensor output is 50p, 17Mbps) ¹	
		[Full HD] 1920x1080, 50p (sensor output is 50p, 28Mbps) ¹ [Full HD] 1920x1080, 50i (sensor output is 50p) [FSH : 17Mbps] [Full HD] 1920x1080, 25p (sensor output is 50p) [FPH: 17Mbps] [HD] 1280 x 720, 50p (sensor output is 25p) [SH:17Mbps]	
Viewfinder	Resolution Live Viewfinder	OLED Live View Finder (1,744,000 dots equivalent)	1,440,000 dots
	Field of View	Approx. 100%	Approx. 100%
	Magnification	Approx. 1.34x / 0.67x (35mm camera equivalent)	Approx. 1.4x / 0.7x (35mm camera equivalent) with 50mm lens at infinity; -1.0 m-1
Focus	Contrast AF System	•	•
	Focus Modes AFS/AFC/MF	•	• (also AFF Focus Mode)
	AF Mode	Face Detection / AF Tracking / 23-area-focusing / 1-area-focusing / Pinpoint (Full area touch is available)	Face Detection / AF Tracking / 23-area-focusing / 1-area-focusing / Pinpoint
Exposure Control	AF Assist Lamp	•	•
	Modes: Intelligent Multiple / Centre Weighted / Spot	•	•
	Exposure Mode	Programme AE / Aperture-Priority / Shutter-Priority / Manual Exposure	Programme AE, Aperture Priority AE, Shutter Priority AE, Manual
	AE Bracket	3.5/7 frame in 1/3, 2/3 or 1 EV Step, single/burst	3.5/7 frame, in 1/3 or 2/3 or 1EV Step, ±3 EV
White Balance	ISO Sensitivity (standard output sensitivity)	Auto / Intelligent ISO / 200 / 400 / 800 / 1600 / 3200 / 6400 / 12800 (Changeable to 1/3, 1EV step) (Extended ISO125-less under 200, ISO more over 12800-25600 Available) (Up to ISO3200 in Auto)	Auto / Intelligent ISO / 160 / 200 / 400 / 800 / 1600 / 3200 / 6400 / 12800 (Changeable to 1/3 EV step)
	Colour Temperature Setting	2500-10,000K in 100K	2500-10,000K in 100K
Shutter Speed	White Balance Bracket	3 exposures in blue/amber axis or in magenta/green axis	3 exposures in blue/amber axis or in magenta/green axis
	Still Images	Still Images: 1/4000-60 and Bulb (Approx. 60 minutes), Motion image: 1/16,000 ~ 1/25	Still Images: Bulb (Max.120), 1/4000 ~ 60 Motion image: 1/16,000 ~ 1/30 (NTSC), 1/16,000 ~ 1/25
Burst Shooting	Burst Speed	SH: 20 frames/sec, H: 6 frames/sec, M: 4 frames/sec (with Live View), L: 2 frames/sec (with Live View)	SH : 20.0 frames/sec, H: 6.0 frames/sec(with AFS), M: 3.7 frames/sec (with Live View), L: 2.0 frames/sec (with Live View)
	Number of Recordable Images	18 images (when there are RAW files with the particular speed) Unlimited consecutive shooting (when there are no RAW files) (depending on memory card size, battery power, picture size and compression)	9 images (when there are RAW files with the particular speed) Unlimited consecutive shooting (when there are no RAW files) (depending on memory card size, battery power, picture size and compression)
LCD Monitor	Built-In Pop-Up Flash	•	•
	Hot Shoe	•	•
	Monitor Size	Free-angle 7.5cm (3-Inch) / 3:2 Aspect / Wide-viewing angle	TTL Auto with FL220 / FL360 / FL360L / FL500 (Optional) Free-angle 7.5cm (3.0-Inch) / 3:2 Aspect / Wide-viewing angle
	Pixels	641,000 dots	920,000 dots
Interface	Brightness Adjustment	•	•
	USB	USB 2.0 High Speed	USB 2.0 High Speed
	HDMI	miniHDMI TypeC Video: Auto / 1080p / 1080i / 720p / 480p (576p in PAL system) Audio: Dolby™ Digital	miniHDMI TypeC Video: Auto / 1080p / 1080i / 480p, Audio: Stereo
	Remote/External Microphone Input	ø 2.5mm / ø 3.5mm	-
	Built-In Microphone	Stereo, Wind-cut: Off / Low / Standard / High / AUTO	Stereo, Wind-cut: Off / Auto, Flicker reduction:1/50 / 1/60 / 1/100 / 1/120, Microphone level adjustable: Lv1 / Lv2 / Lv3 / Lv4 / OFF
	Speaker	Monaural	Monaural
Power	Battery	Li-ion Battery Pack (7.2V, 1860mAh) (Included)	Li-ion Battery Pack (7.2V, 1200mAh) (Included)
	Battery Life (CIPA Standard)	Approx. 540 images with H-HS12035 Approx. 500 images with H-VSD14140	Approx. 320 images with H-PS14042 Approx. 310 images with H-PS14042 Approx. 320 images with H-FS45150
Dimensions (W x H x D)		132.9 x 93.4 x 82.0mm (excluding protrusions)	119.9 x 83.2 x 70.8mm (excluding protrusions)
Weight		Approx. 470g (body only)	Approx. 346g (body only)

¹ When attaching 3D lens in Micro Four Third System standard. ² Use a card with SD Speed Class with „Class4“ or higher.³ Motion images can be recorded continuously for up to 29 min 59 sec in European PAL areas. ⁴ Continuous recording exceeding 4GB or 29 min 59 sec is not possible when recording AVCHD in PSH.



			DMC-GX1	DMC-GF5	
Type	Recording Media		SD Memory Card, SDHC Memory Card, SDXC Memory Card (Compatible with UHS-I standard SDHC/SDXC memory cards)	SD Memory Card, SDHC Memory Card, SDXC Memory Card	
	Image Sensor Size		17.3 x 13.0mm (in 4:3 aspect ratio)	17.3 x 13.0 mm (in 4:3 aspect ratio)	
	Micro Four Thirds Mount		•	•	
Image Sensor	Type		Live MOS Sensor	Live MOS Sensor	
	Total Pixels		16.68 Megapixels	13.06 megapixels	
	Camera Effective Pixels		16.0 Megapixels	12.10 megapixels	
	Dust Reduction System		Supersonic wave filter	Supersonic wave filter	
Recording System	Recording File Format		Still Image: JPEG(DCF, Exif 2.3), RAW, MP4 ¹ Motion Image: AVCHD (Audio format: Dolby Digital 2 ch) / MP4 (Audio format AAC 2ch)	Still Image: JPEG(DCF, Exif 2.3), RAW, MP4 ¹ Motion Image: AVCHD (Audio format: Dolby Digital 2 ch) / MP4 (Audio format AAC 2ch)	
	Aspect Ratio		4:3, 3:2, 16:9, 1:1	4:3, 3:2, 16:9, 1:1	
	Colour Space		sRGB, Adobe RGB	sRGB, Adobe RGB	
	Still Image	{4:3} 4592x3448 (L) 3232 x 2424(M) 2272 x 1704(S) 1824x1368 ¹ {3:2} 4576x3056 (L) 3232 x 2160(M) 2272 x 1520(S) 1824x1216 ¹ {16:9} 4576x2576 (L) 3232 x 1824(M) 1920 x 1080(S) 1824x1024 ¹ {1:1} 3424 x 3423 (L) 2416 x 2416(M) 1712 x 1712 (S) 1712x1712 ¹		{4:3} 4000x3000(L) / 2816x2112(M) / 2048x1536(S) / 1600x1200 ¹ {3:2} 4000x2672(L) / 2816x1880(M) / 2048x1360(S) / 1600x1064 ¹ {16:9} 4000x2248(L) / 2816x1584(M) / 1920x1080(S) / 1600x904 ¹ {1:1} 2992 x 2992 (L) / 2112 x 2112 (M) / 1504 x 1504 (S) / 1440x1440 ¹	
		File Size (pixels)	Motion JPEG / MP4 ²	~ / [Full HD] 1920 x 1080, 25fps (sensor output is 25p) (Approx.20Mbps) (HD) 1280 x 720, 25fps (sensor output is 25p) (Approx.10Mbps) (VGA) 640x480, 25fps (sensor output is 25p) (Approx.4Mbps)	~ / [Full HD] 1920x1080 (sensor output is 25p) ³ (HD) 1280x720 (sensor output is 25p) ³ (VGA) 640x480 (sensor output is 25p) ³
			AVCHD ³ / AVCHD Lite (PAL)	[Full HD] 1920 x 1080, 50i (sensor output is 25p) (FSH:17Mbps) (HD) 1280 x 720, 50p (sensor output is 25p) (SH:17Mbps)	[Full HD] 1920x1080, 50i (sensor output is 25p) (FSH:17Mbps) ³ (HD) 1280 x 720, 50p (sensor output is 25p) (SH:17Mbps) ³
Focus	Contrast AF System		•	•	
	Focus Modes AFS/AF/MF		• (also AFF Focus Mode)	• (also AFF Focus Mode)	
	AF Mode		Face Detection / AF Tracking / 23-area-focusing / 1-area-focusing/Pinpoint Touch 1(- area-focusing in Face detection / AF Tracking / Multi-area- focusing / 1-area-focusing / Pinpoint)	Face Detection / AF Tracking / 23-area-focusing / 1-area-focusing/Pinpoint	
Exposure Control	AF Assist Lamp		•	•	
	Modes: Intelligent Multiple / Centre Weighted / Spot		•	•	
	Exposure Mode		Programme AE, Aperture Priority AE, Shutter Priority AE, Manual, Auto	Programme AE, Aperture Priority AE, Shutter Priority AE, Manual	
	AE Bracket		3, 5, 7 frame, in 1/3, 2/3 or 1 EV Step, ±3 EV	3.5 frame, in 1/3 or 2/3 EV Step, ±4/3 EV	
White Balance	ISO Sensitivity (standard output sensitivity)		Auto / Intelligent ISO / 160 / 200 / 400 / 800 / 1600 / 3200 / 6400 / 12,800 (Changeable to 1/3 EV step)	Auto / Intelligent ISO / 160 / 200 / 400 / 800 / 1600 / 3200 / 6400 / 12,800 (Extended) (Changeable to 1/3 EV step)	
	Colour Temperature Setting White Balance Bracket		2500-10,000K in 100K 3 exposures in blue/amber axis or in magenta/ green axis	2500-10,000K in 100K 3 exposures in blue/amber axis or in magenta/ green axis	
Shutter Speed	Still Images: 1/4000 – 60 and Bulb (up to approx. 2 minutes) Motion image: 1/16,000 – 1/25 (PAL)		Still Images: 1/4000 – 60 Motion image: 1/16,000 – 1/30 (NTSC), 1/16,000 – 1/25		
	Burst Speed		SH: 20 frames/sec, H: 4.2 frames/sec (When AFS mode), M: 3 frames/sec (with Live View), L: 2 frames/sec (with Live View)	H: 4.0 frames/sec(with AFS), M: 3.0 frames/sec (with Live View), L: 2.0 frames/sec (with Live View)	
Built-in Flash	Number of Recordable Images		9 images (when there are RAW files with the particular speed) Unlimited consecutive shooting (when there are no RAW files) (depending on memory card size, battery power, picture size and compression)	4 images (when there are RAW files with the particular speed) Unlimited consecutive shooting (when there are no RAW files) (depending on memory card size, battery power, picture size and compression)	
	Built-In Pop-Up Flash Hot Shoe		TTL, GN7.6 (equivalent ISO 160) TTL Auto with FL220 / FL360 / FL360L / FL500 (Optional)	TTL, GN6.3 equivalent (equivalent ISO 160) –	
LCD Monitor	Monitor Size		7.5cm (3.0-Inch) / 3:2 Aspect / Wide-viewing angle	7.5cm (3-Inch) / 3:2 Aspect / Wide-viewing angle	
	Pixels		460,000 dots	920,000 dots	
	Brightness Adjustment		•	•	
Interface	USB		USB 2.0 High Speed	USB 2.0 High Speed	
	HDMI		miniHDMI TypeC, Video: Auto / 1080i / 720p / 480p (576p in PAL system), Audio: Linear PCM	miniHDMI TypeC Video: Auto / 1080i / 480p (576p in PAL system), Audio: Stereo	
	Remote/External Microphone Input		Remote socket	–	
	Built-In Microphone		Stereo, Wind-cut: Off / Auto, Microphone level adjustable: Lv1 / Lv2 / Lv3 / Lv4	Stereo, Wind-cut: Off / Auto, Flicker reduction, Microphone level adjustable: Lv1 / Lv2 / Lv3 / Lv4	
Power	Speaker		Monaural	Monaural	
	Battery Battery Charger/AC Adaptor		Li-ion Battery Pack (7.2V, 1010mAh) (Included) Battery Charger	Li-ion Battery Pack (7.2V, 940mAh) (Included), Battery Charger	
	Battery Life (CIPA Standard)		Approx. 310 images with H-PS14042 Approx. 300 images with H-FS014042 Approx. 340 images with H-H014	Approx. 360 images with H-H014 Approx. 320 images with H-FS014042 Approx. 330 images with H-PS14042	
Dimensions (W x H x D)			116.3 x 67.8 x 39.4 mm (excluding protrusions)		
Weight			Approx. 272g (body only)		

¹ When attaching 3D lens in Micro Four Third System standard. ² Use a card with SD Speed Class with "Class4" or higher. ³ Motion images can be recorded continuously for up to 29 min 59 sec in European PAL areas.

Due to the continual development of the product, product design and specifications are subject to change from time to time. And although the catalog has been prepared with the utmost care, it may possibly not reflect certain changes that were made following the release of the catalog. For additional details, please consult your local Panasonic dealer. Panasonic Marketing Europe GmbH South-East Europe Branch Office is not responsible for any omissions or typographical errors.

www.panasonic.eu

<http://www.facebook.com/Panasonic.Magyarország>

<http://www.facebook.com/panasonichrvatska>

<http://www.facebook.com/panasonicbulgaria>

<http://www.facebook.com/PanasonicRomania>