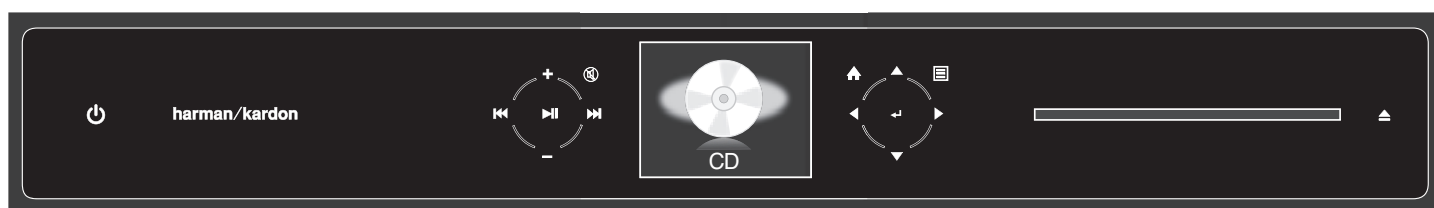


HARMAN KARDON

MAESTROKITCHEN™ 100 SOUND SYSTEM

Installation Manual



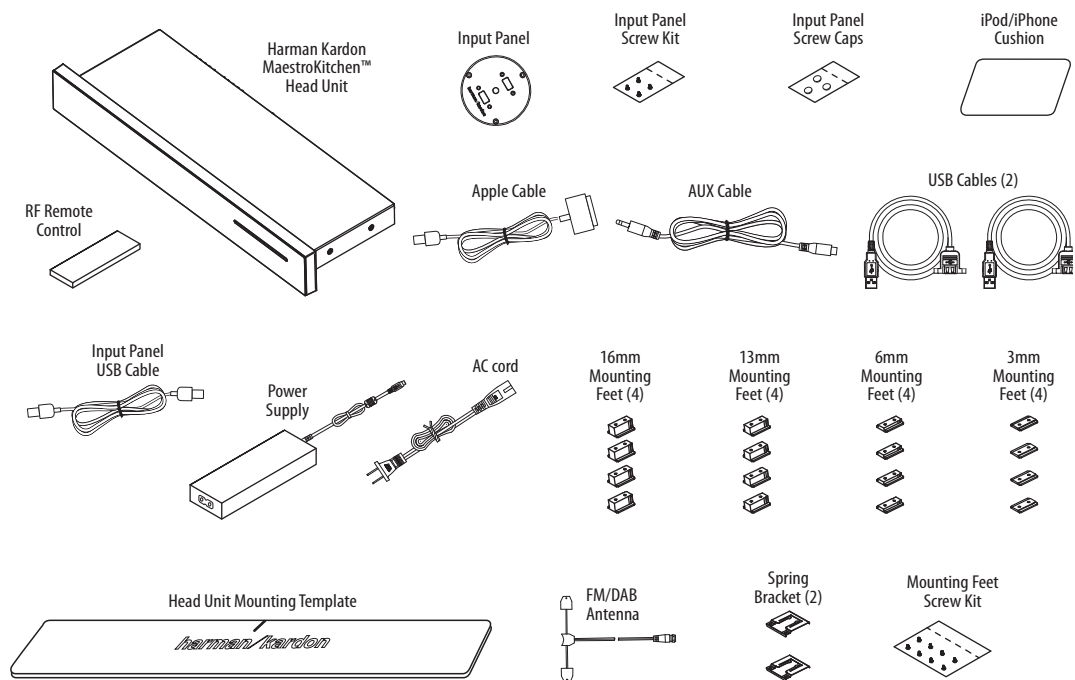
harman/kardon®
by HARMAN

HARMAN KARDON MAESTROKITCHEN 100 SOUND SYSTEM

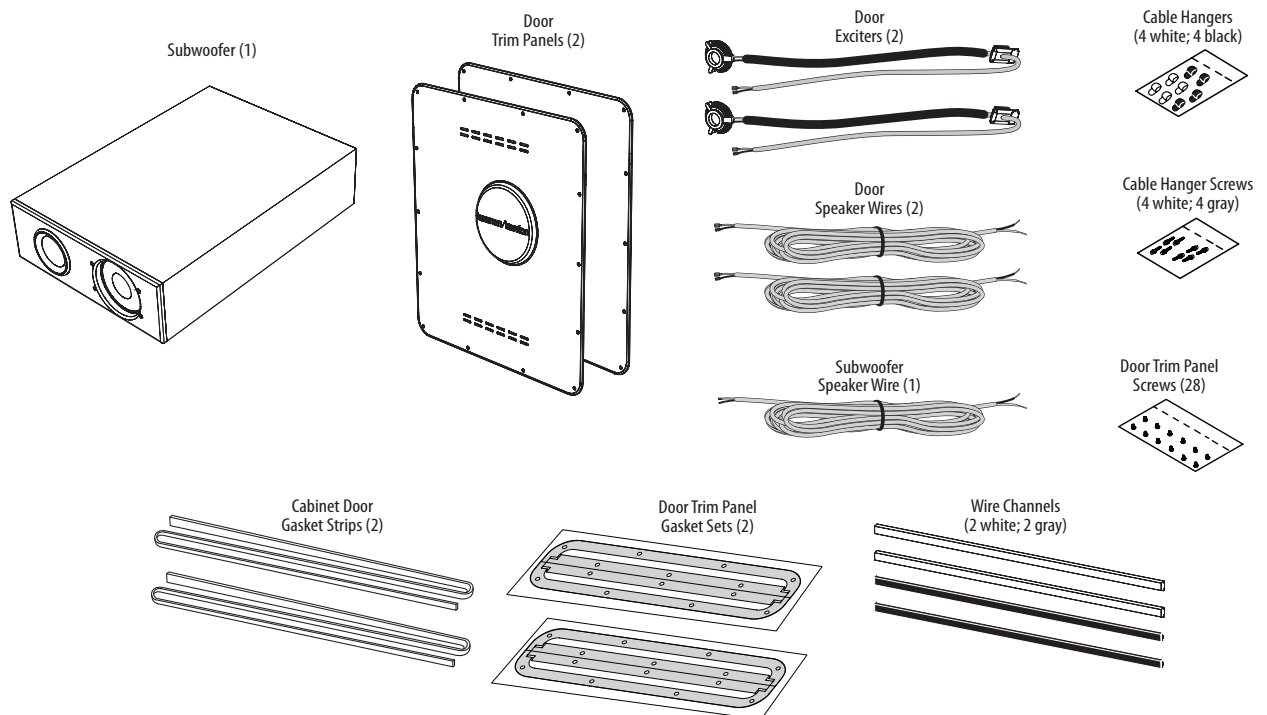
Included Items

Included Items

In MK100 S0 (head unit) box:



In MK100 SP (speaker) box*:



*NOTE: The cabinet doors for the door speakers are shipped with the kitchen cabinetry.

Plan the Installation

Before beginning the installation:

Determine the locations for all of the Harman Kardon MaestroKitchen 100 system's main components:

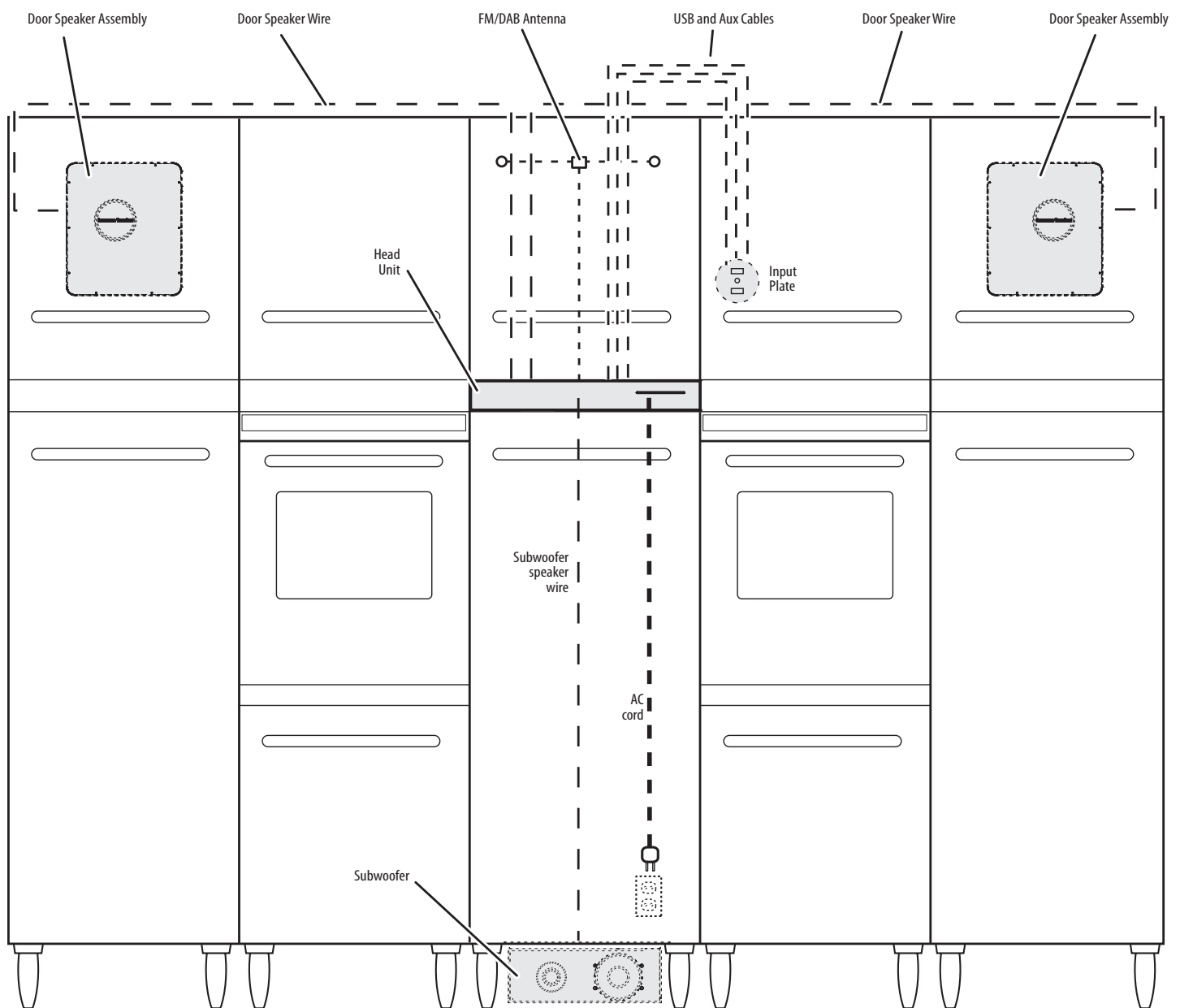
- Head unit (amplifier)
- Left and right door speakers
- Subwoofer (NOTE: Install the subwoofer in a location where a toe-kick grill can be installed in front of it.)
- Input panel

After deciding on the locations for the system's main components:

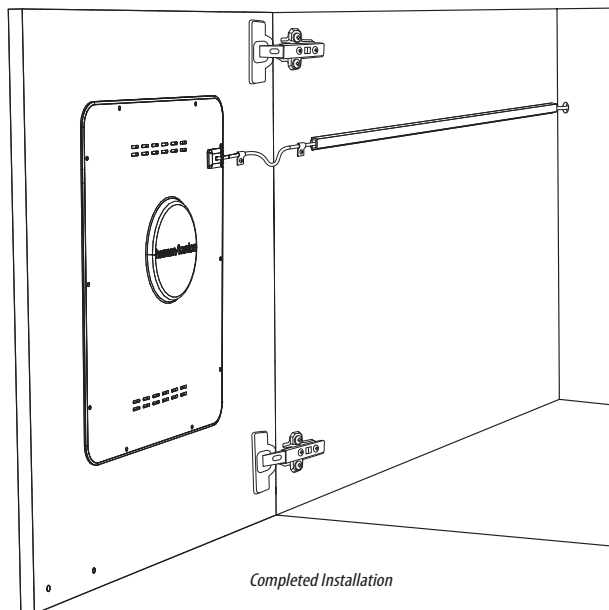
Determine the routing of all the system's cables and wires:

- Door speaker wires
- Subwoofer speaker wire
- Head unit power supply and AC cord
- Input panel USB and auxiliary (aux) cables
- DAB/FM radio antenna

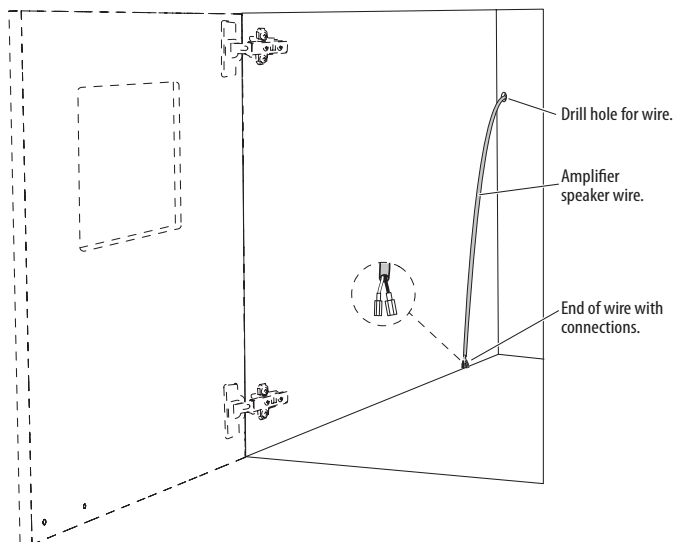
All of the system's cables and wires will run inside, behind and on top of the kitchen cabinetry.



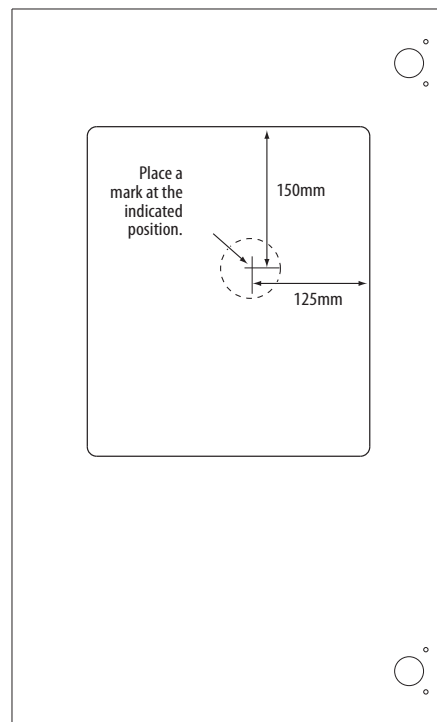
Install the Door Speakers



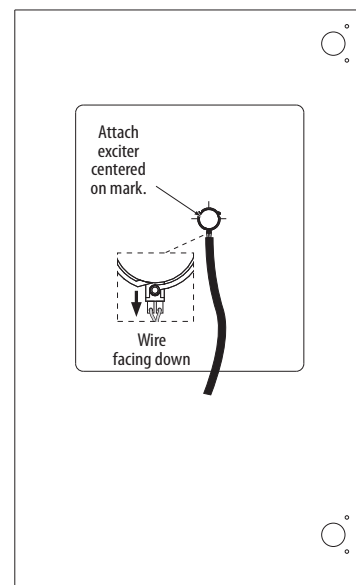
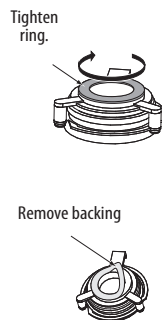
1. Run the amplifier speaker wire from the door speaker cabinet to the head-unit mounting location. **IMPORTANT: Make sure the end of the wire with the connectors is in the cabinet and the end of the wire with the tinned bare leads is at the head unit.** Pull enough wire into the cabinet to stretch all the way to the cabinet's front edge and tape the wire at the hole so it doesn't fall back behind the cabinet. NOTE: You may also need to drill a hole for the wires in the kitchen directly behind the head-unit mounting location.



2. Mark an "X" at the location inside the cabinet door recess at the indicated position. Make sure the area around the "X" is free of dust or other debris.

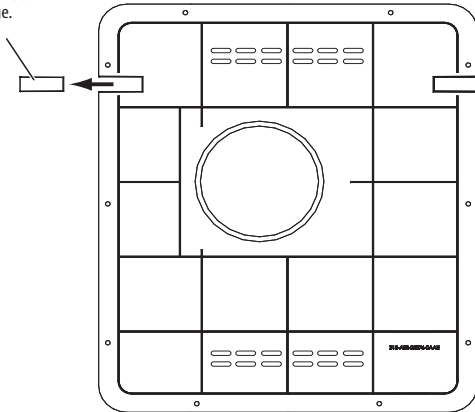


3. Make sure the exciter's inner mounting ring is screwed tightly to the exciter. Remove the adhesive backing and attach the exciter to the door, centered at the mark you made in Step 2, with the wire connection facing the bottom of the door. Press firmly on the exciter's three screws to assure that it adheres well to the door.



4. Remove the pre-scored tab on the hinged side of each door trim panel.

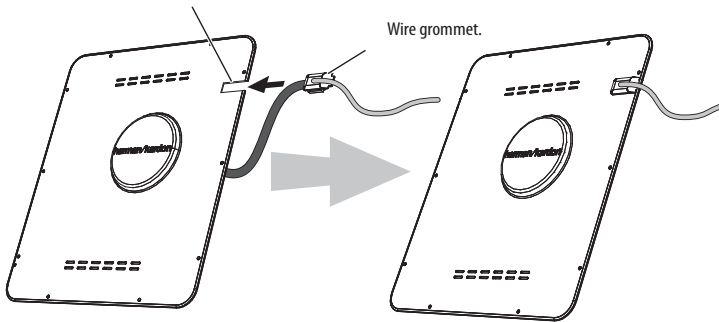
Remove tab on side towards hinge.



5. Slide the wire grommet (located on the exciter wire) into the cut-out on the door trim panel.

Insert grommet into cut-out.

Wire grommet.

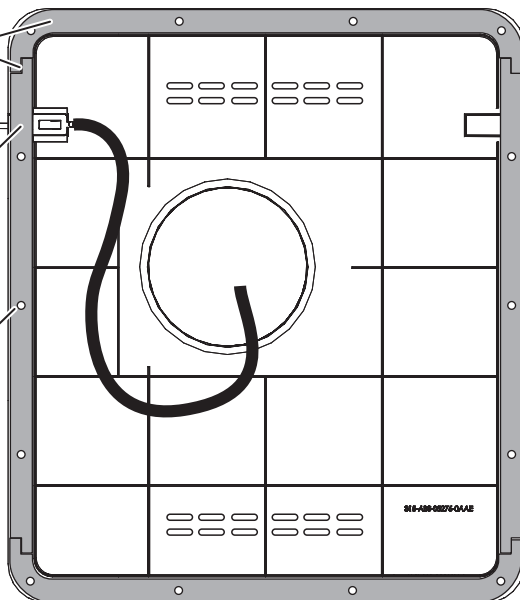


6. Remove the four door trim panel gasket pieces from the adhesive backing and attach them along the outer edges of the door trim panels as shown in the illustration below. Be sure the holes in the gaskets line-up with the screw holes in the door trim panel.

Apply gaskets around panel edges.

Apply gaskets over grommet.

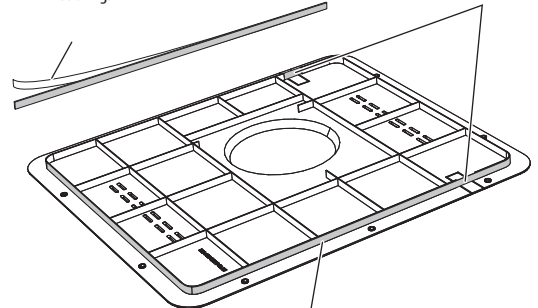
Align holes in gasket with screw holes in door panel.



7. Remove the adhesive backing from one of the long cabinet door gasket strips and attach it all the way around the outside of the outer rim of one door trim panel. **IMPORTANT:** Make sure the gasket is fully attached along its entire length before proceeding to Step 8.

Remove backing.

Gasket strips should span openings.

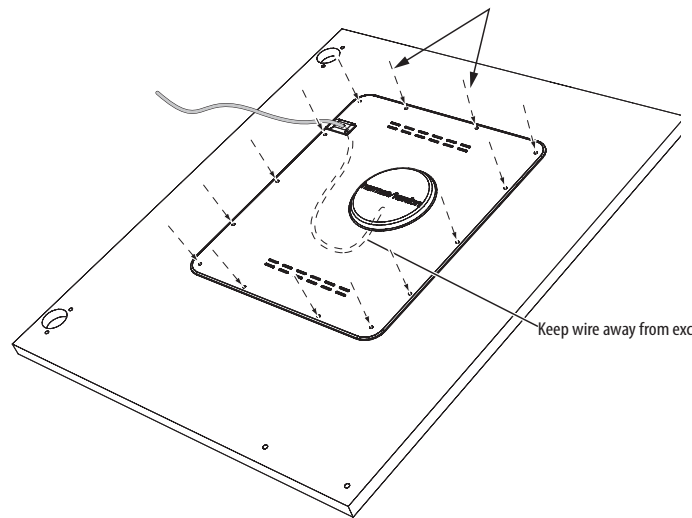


Adhere four gasket strips to outer rim of door panel.

8. Using the door trim panel as a template, drill 14 pilot holes in the door for the mounting screws. **IMPORTANT:** Be sure the speaker wire does not contact the back of the exciter.

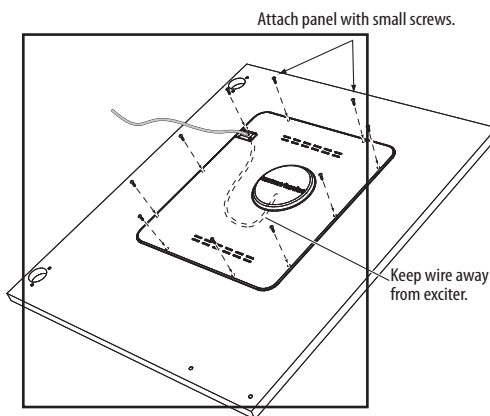
Drill pilot holes.

Keep wire away from exciter.

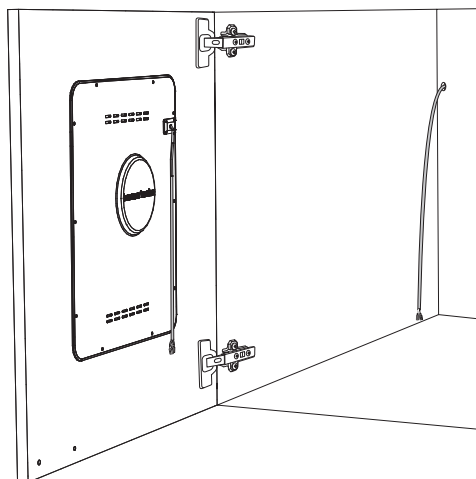


9. Use 14 of the supplied door trim panel screws to attach the door trim panel to the inside of the door. **WARNING: Do not put excessive pressure on the electric screwdriver when attaching the trim panel.** If you pre-drilled the pilot holes in Step 8, we recommend using a manual screwdriver to attach the trim panel.

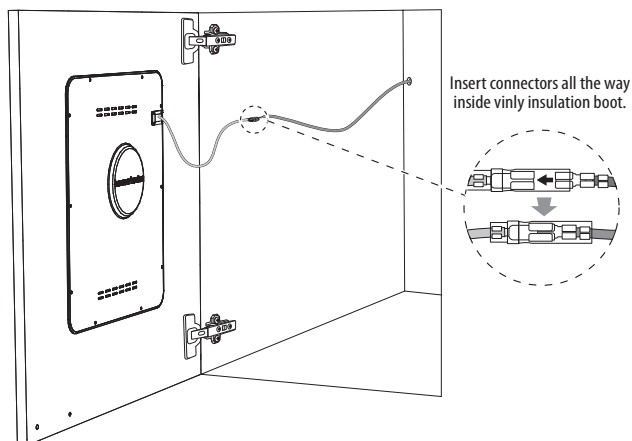
IMPORTANT: Be sure the exciter wire does not contact the back of the exciter.



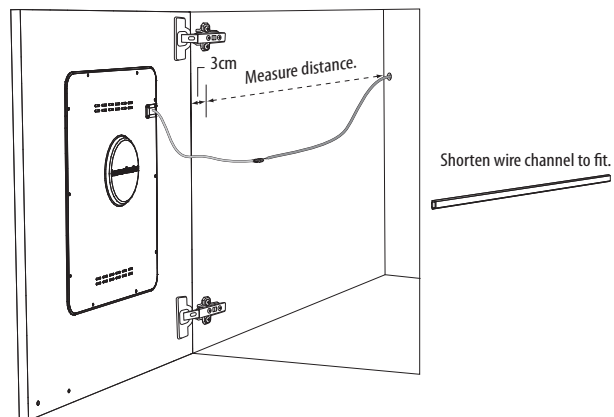
10. Attach the hinges to the door and hang the door on the cabinet.



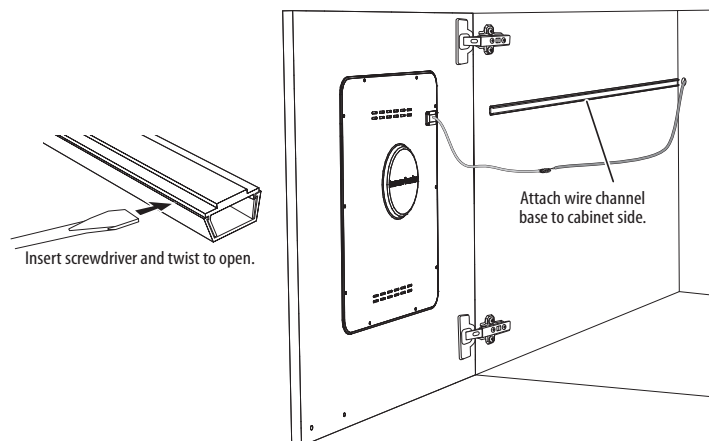
11. Connect the two exciter wire conductors to the two amplifier wire conductors. The connectors will mate only one way: red wire to red wire, and black wire to black wire. **IMPORTANT: Do NOT cut and splice the speaker wires.**



12. Measure the included wire channel and the cabinet wall. If necessary, use a knife to shorten the wire channel so it will fit along the cabinet wall, leaving 3cm of distance from the channel to the front of the cabinet.

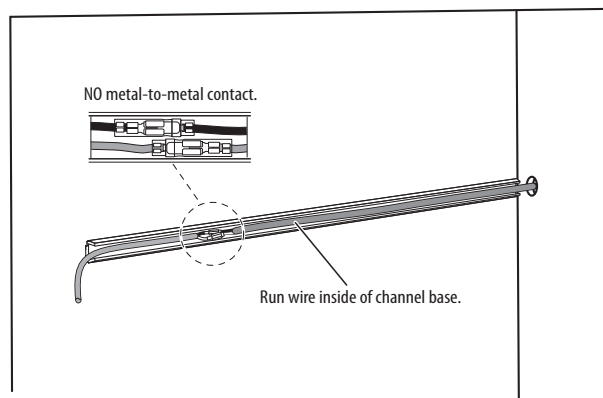


13. Use a small screwdriver to open the wire channel, remove the backing from the adhesive strip from the wire channel base and attach the wire channel base to the cabinet side.

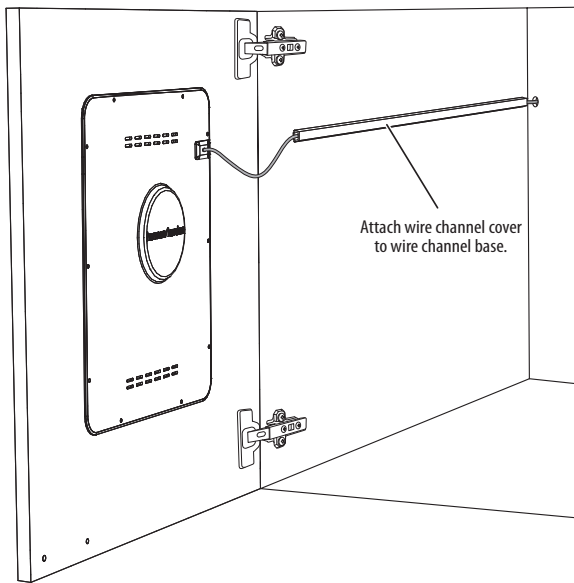


14. Insert the speaker wire in the wire channel base, feeding any excess wire back through the hole in the rear of the cabinet.

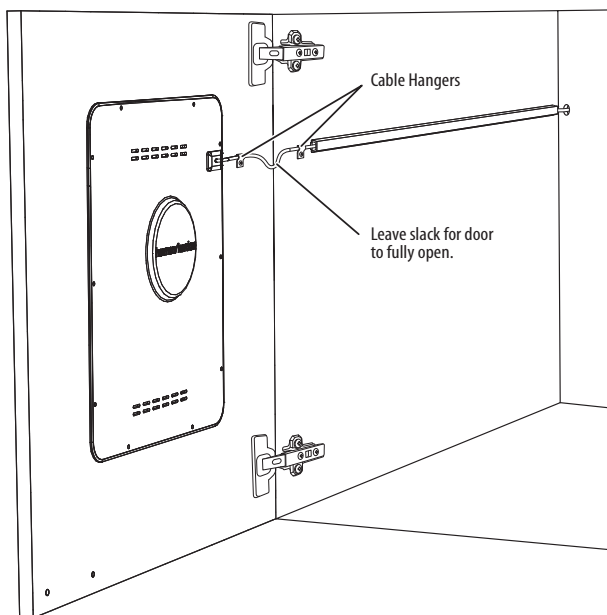
IMPORTANT: Make sure that the metal connectors of the two conductors DO NOT TOUCH each other inside the channel.



15. Attach the wire channel cover to the wire channel base.

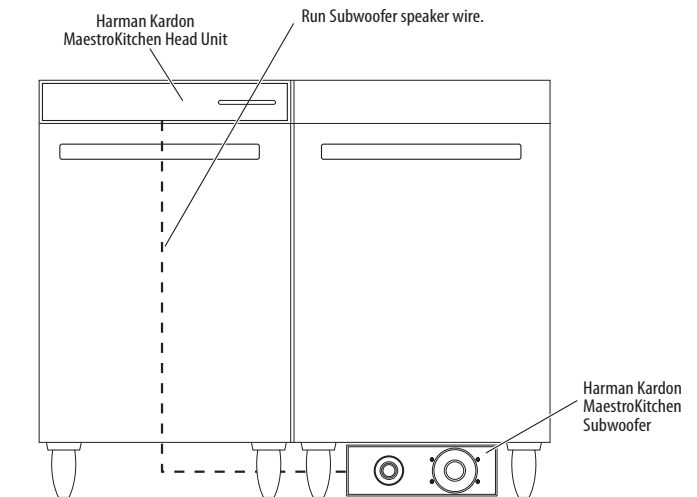


16. Use the supplied cable hangers to dress any excess wire, leaving enough slack to allow the cabinet door to fully open.

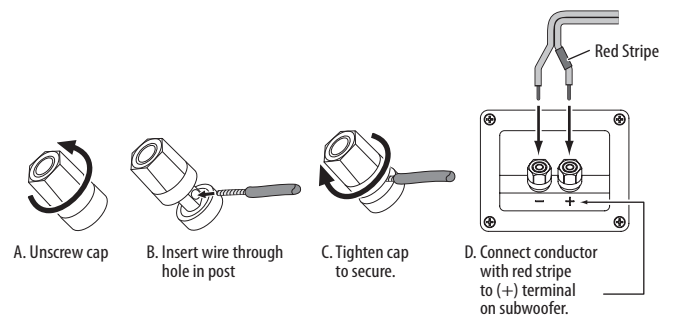


Install the Subwoofer

1. Run the subwoofer speaker wire from the head-unit location to the subwoofer location. **NOTE: You may need to drill a hole for the wire in the kitchen directly behind the head unit's mounting location.**



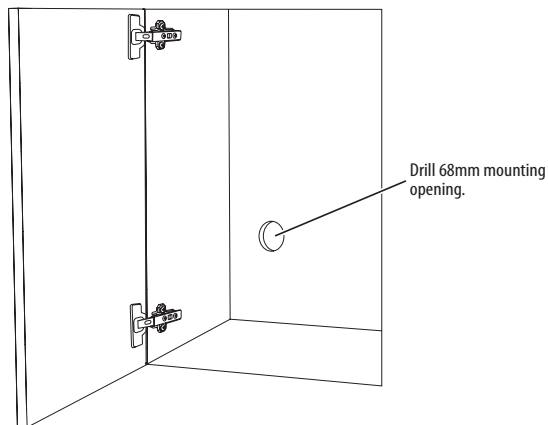
2. Connect the subwoofer wire to the subwoofer. **IMPORTANT: Make sure to connect the conductor with the red band to the subwoofer's (+) terminal. Make sure that the (+) and (-) wires do not touch each other or the other terminal.**



3. Install the subwoofer underneath the kitchen cabinet. If possible, install the subwoofer in a location that will be covered by a grill opening in the toe-kick.

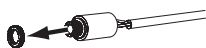
Installing the Input Panel

1. Drill a 68mm diameter mounting opening into the back wall of the kitchen cabinet.

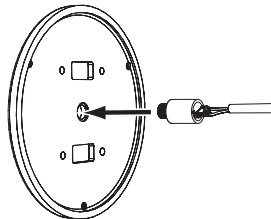


2. Assemble the cables to the input panel as shown in the illustration.

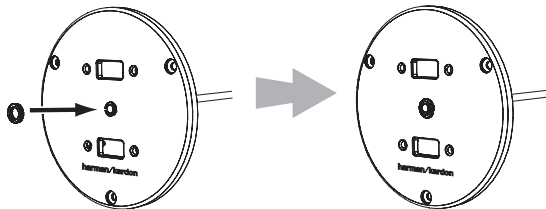
1. Remove retainer from jack.



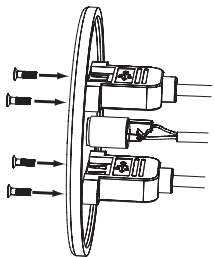
2. Insert jack through input panel.



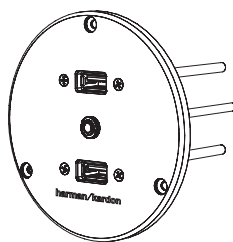
3. Replace retainer on jack.



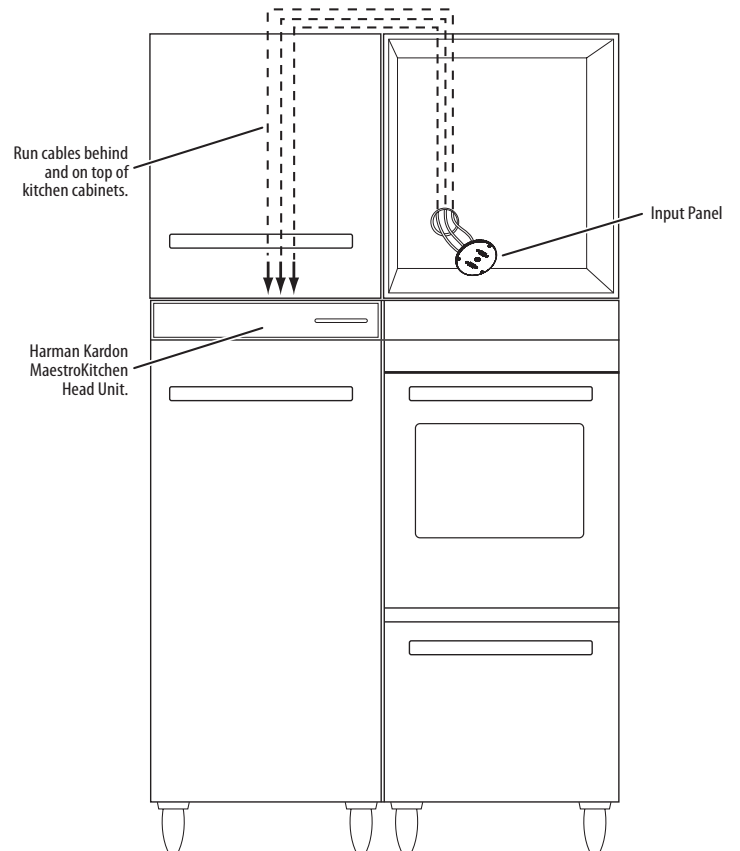
4. Attach USB cables to panel.



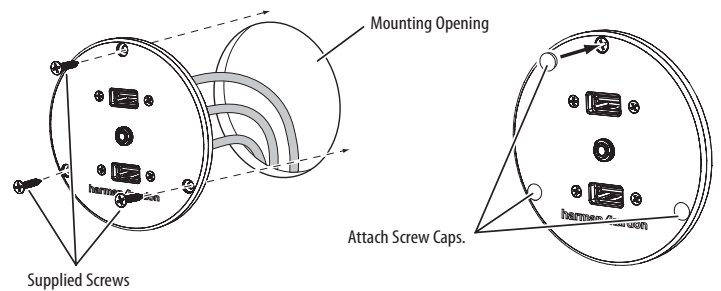
5. Completed input panel.



3. Run the two USB cables and the stereo mini cable through the mounting opening to the head-unit location. NOTE: You may need to drill holes for the cables in the kitchen directly behind the head-unit mounting location.



4. Using a manual screwdriver (do NOT use an electric screwdriver for this step), use the supplied screws to attach the input panel to the back wall of the cabinet. Then press the input panel screw caps over the exposed attachment screws.

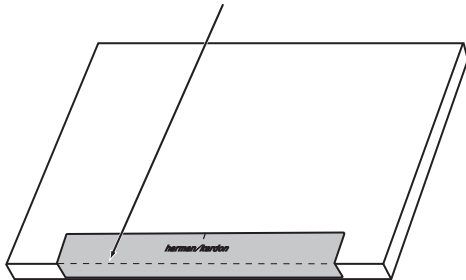


Installing the Head Unit

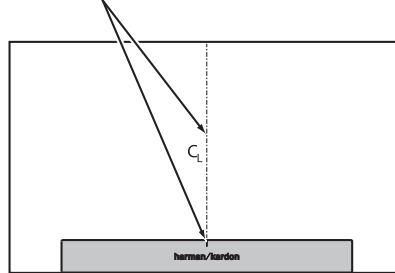
Preparing the Mounting Shelf

1. Place the included head-unit mounting template on the mounting shelf that will hold the head unit. NOTE: The mounting shelf must be at least 562mm wide and 300mm deep to accommodate the head unit and power supply.
 - a. Fold the template's front flap along the dotted line, down over the front edge of the mounting shelf.
 - b. Align the mark on the template with the centerline of the mounting shelf.
 - c. Tape the template to the mounting shelf along its long edges.

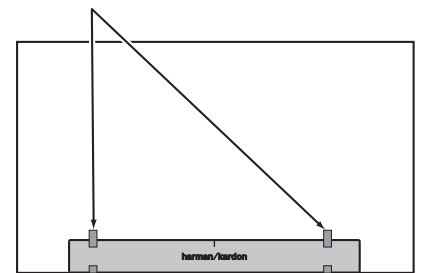
A. Fold flap down along dotted line and place template against front edge of mounting shelf.



B. Align mark on template with center line of mounting shelf.

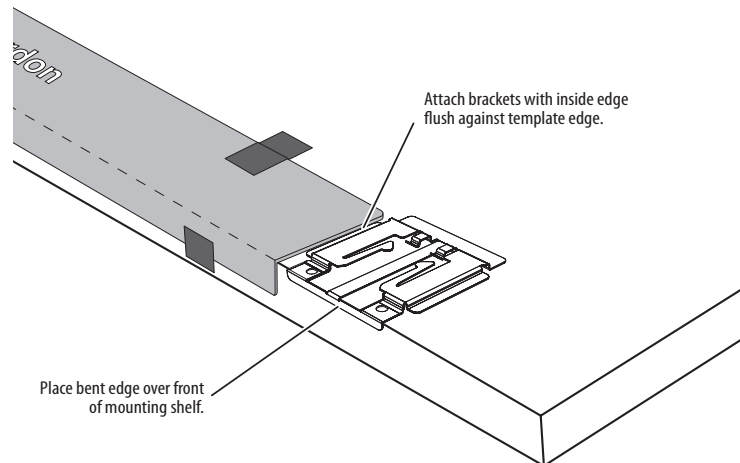
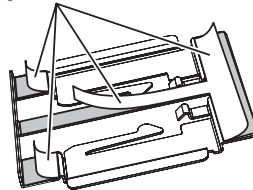


C. Tape template to mounting shelf along its long edges.



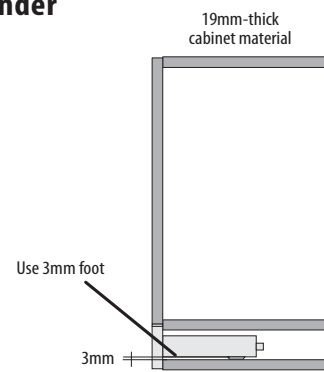
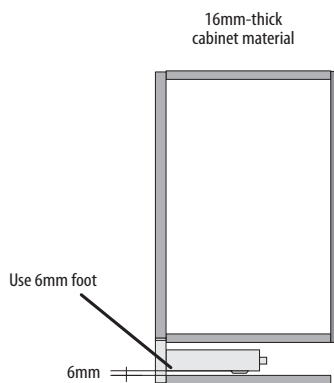
2. Peel the backing from the adhesive on the spring brackets and attach the brackets to the mounting shelf so their inside edges are flush against the edge of the mounting template and their front edges are bent over the front edge of the mounting shelf. Press down firmly on the bracket to insure that it adheres well to the mounting shelf.

Remove backing from adhesive on brackets.

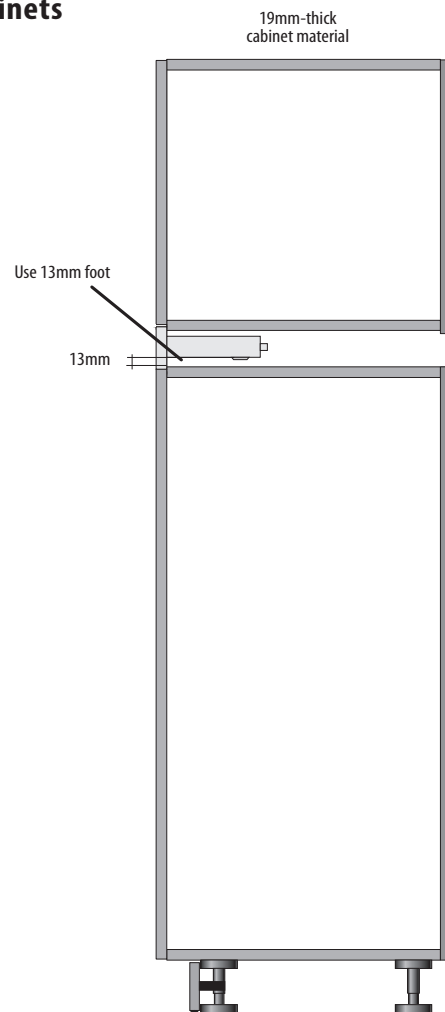
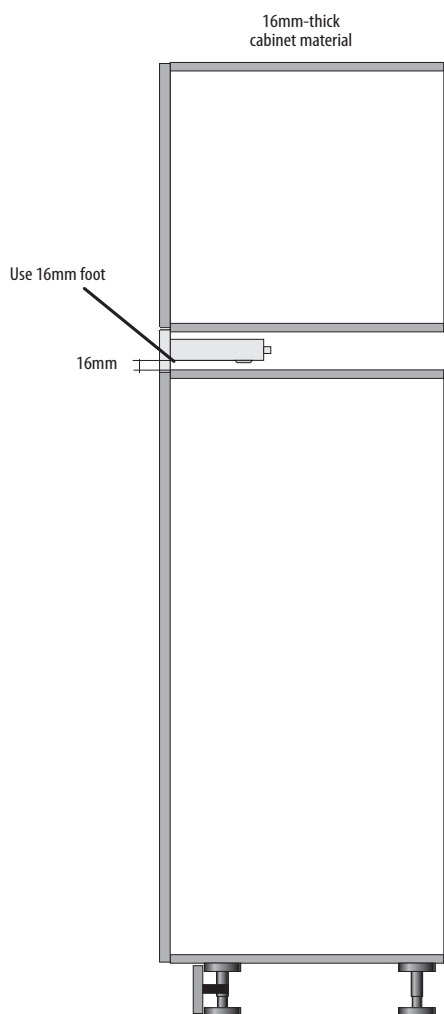


3. The head unit is shipped with four different sets of feet: 16mm high, 13mm high, 6mm high and 3mm high.
 - a. Select the proper foot height for your particular installation, based on the location of the head unit and the cabinet material thickness.

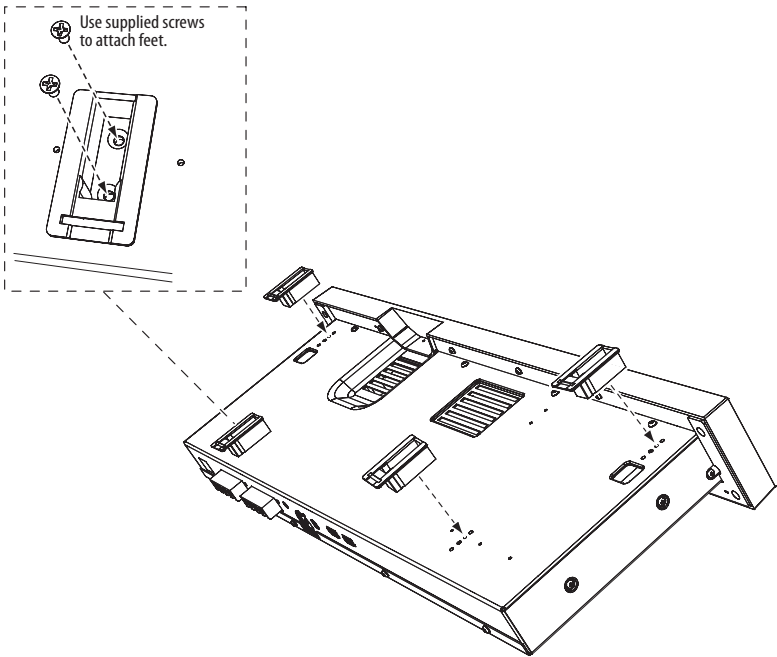
Head Unit Hanging Under Upper Cabinet



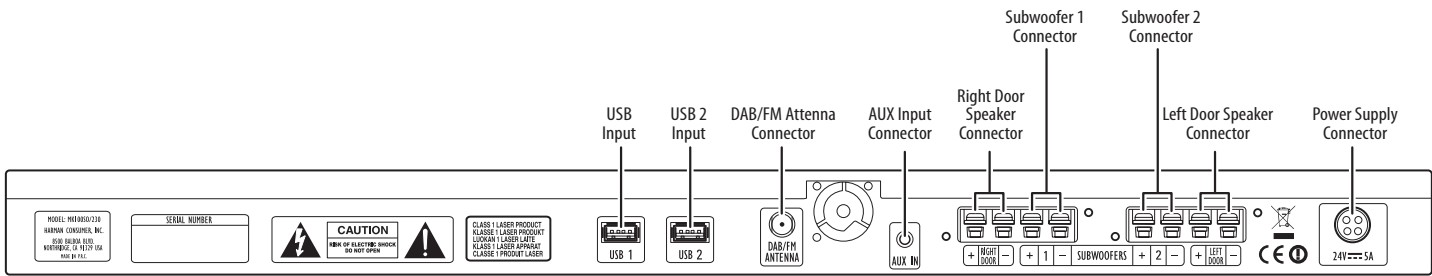
Head Unit Mounted Between Cabinets



b. Use the supplied screws to install the feet onto the bottom of the head unit.



Connecting and Installing the Head Unit

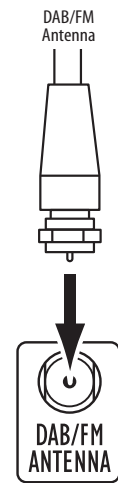
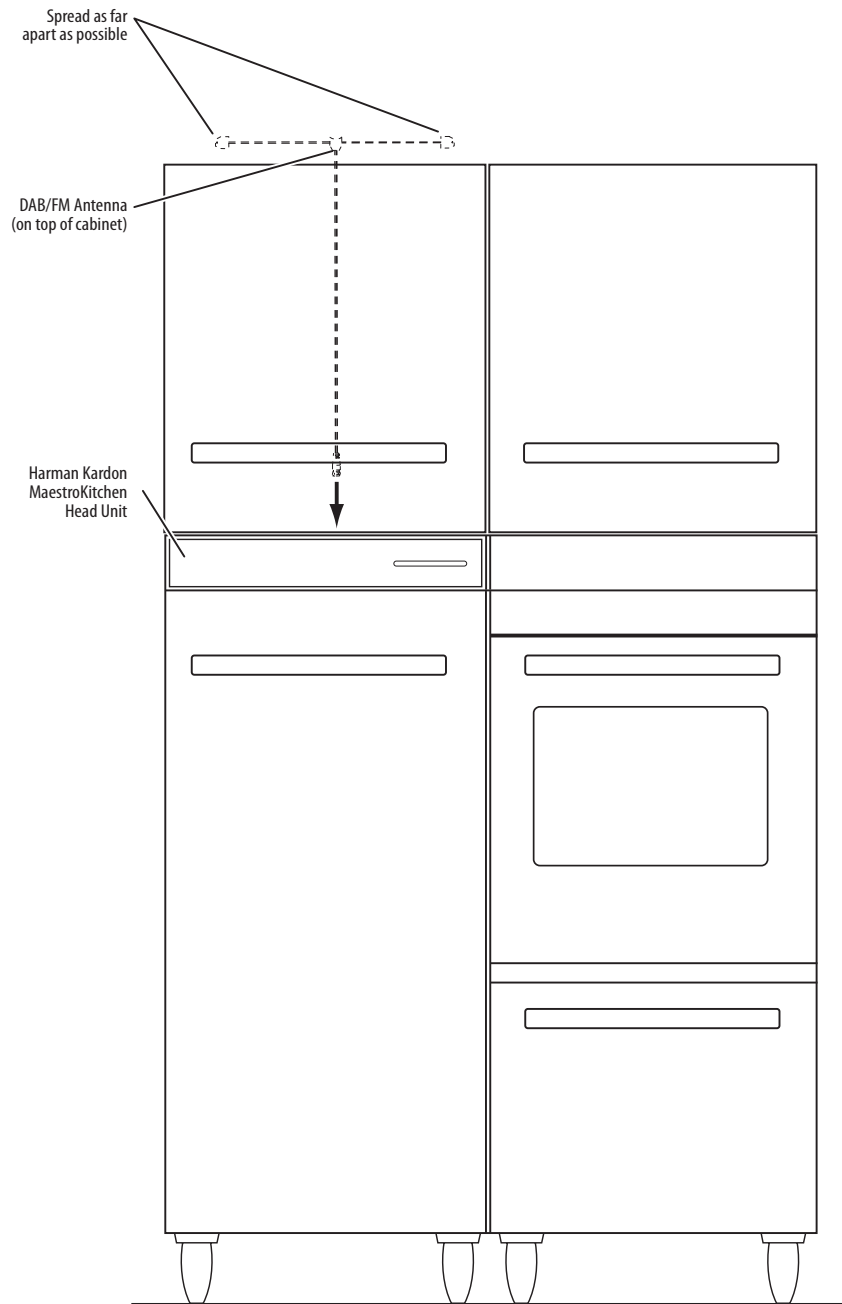


Head Unit Connections

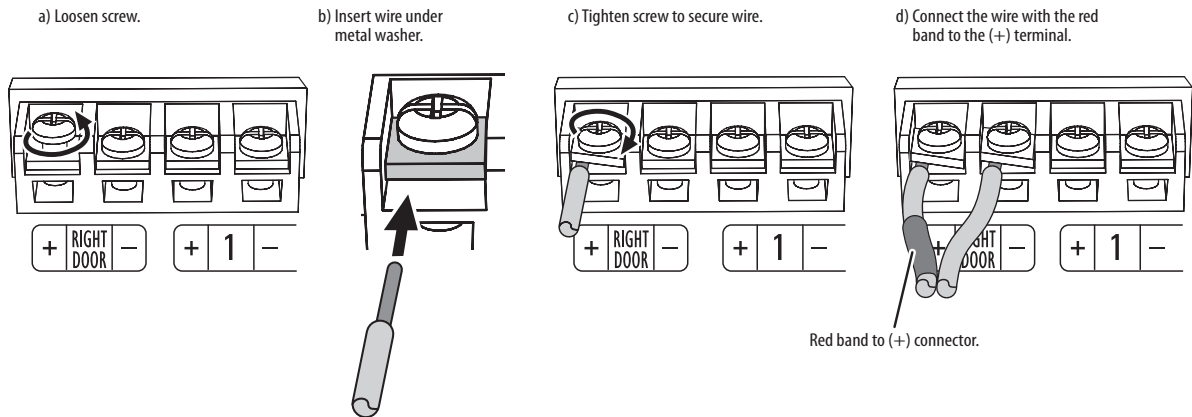
HARMAN KARDON MAESTROKITCHEN 100 SOUND SYSTEM

Installation

1. Run the DAB/FM radio antenna cable from the head unit location to the top of the cabinet. Spread the antenna ends apart as much as possible. Connect the antenna to the head unit's DAB/FM Antenna connector. NOTE: You may need to drill a hole for the cable in the kitchen cabinet directly behind the head-unit mounting location.



2. Connect the left and right door speaker wires to the head unit's Left and Right Door Speaker connectors:
 - a. Use a Phillips screwdriver to loosen the screw.
 - b. Insert the tinned bare wire into the connector under the metal washer. It is very important that the wire be under the washer.
 - c. Tighten the screw to secure the wire.
 - d. Connect the wire with the red band to the (+) terminal.



IMPORTANT: Make sure that the (+) and (-) wires do not touch each other or the other terminal.

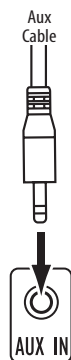
NOTE: You may need to drill a hole for the speaker wires in the kitchen cabinet directly behind the head unit mounting location.

3. Connect the subwoofer wire to the head unit's Subwoofer 1 connector following the same method as for the door speaker wires. Connect the wire with the red band to the (+) terminal.

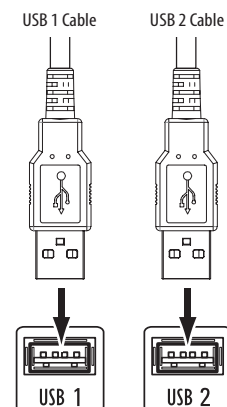
IMPORTANT: Make sure that the (+) and (-) wires do not touch each other or the other terminal.

NOTE: If the installation has two subwoofers, connect one to the Subwoofer 1 connector and the other to the Subwoofer 2 connector. Do NOT connect both subwoofers to a single speaker terminal.

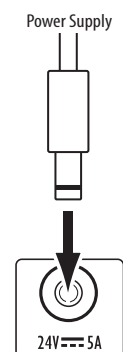
4. Connect the auxiliary audio cable from the input panel to the head unit's Aux Input connector.
NOTE: You may need to drill a hole for the audio cable in the kitchen cabinet directly behind the head-unit mounting location.



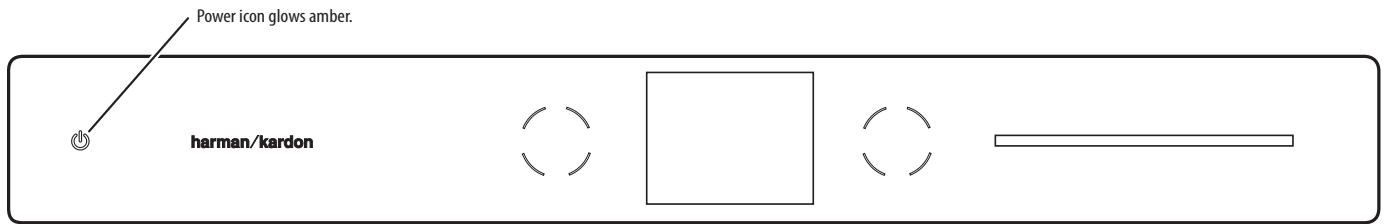
5. Connect the USB cables from the input panel to the head unit's USB 1 and USB 2 connectors.
NOTE: You may need to drill a hole for the cables in the kitchen cabinet directly behind the head-unit mounting location.



6. Place the power supply on the mounting shelf. Connect the power supply to the head unit's Power Supply connector, connect the AC cord to the power supply and to an AC wall outlet.

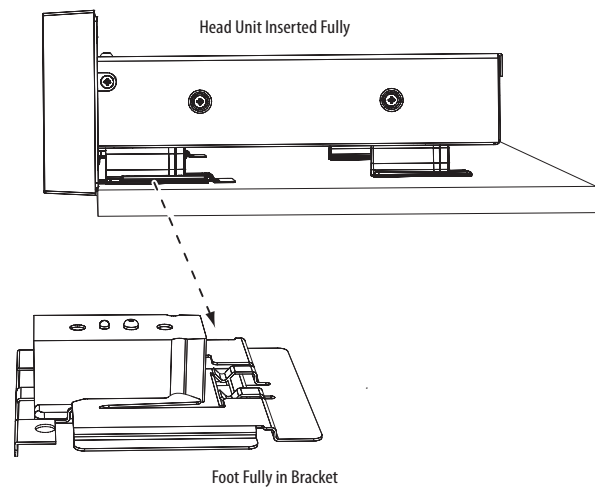
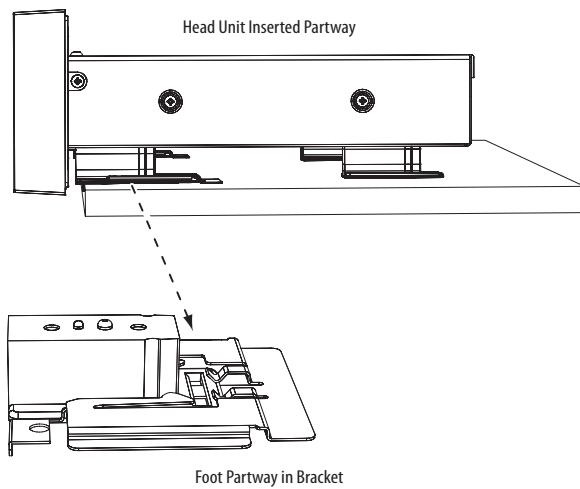


NOTE: The head unit will enter the Standby power mode (the front-panel Power button will glow amber).

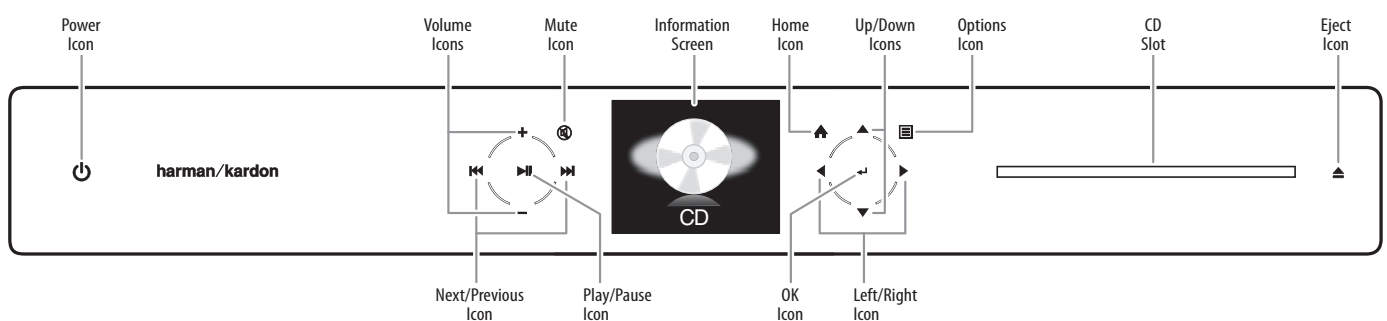


7. Insert the head unit part-way into its designated position, so the front feet are partway into the mounting brackets. The head unit will extend forward approximately 1cm.

IMPORTANT: Do not insert the head unit fully into the brackets at this time.



Test the System



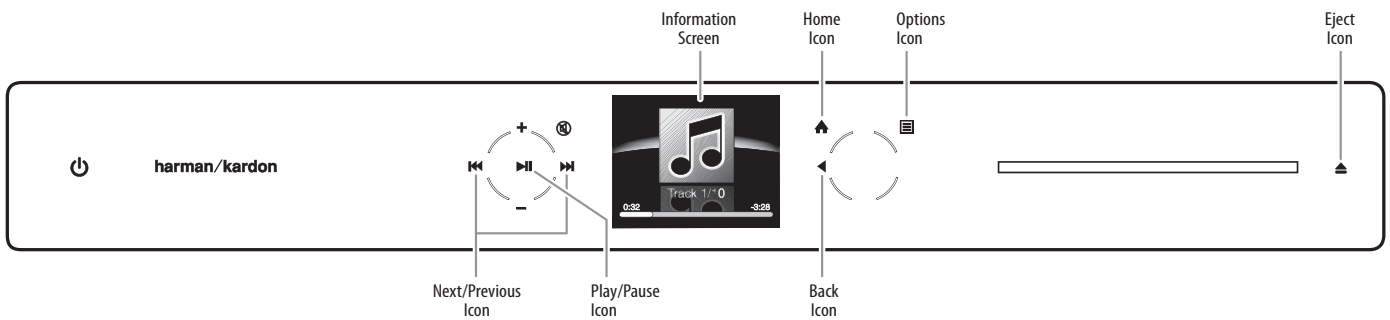
(NOTE: Not all of the icons shown above will appear on the screen when you first turn on the head unit.)

1. Touch the Power icon to turn on the head unit. The setup wizard will appear.
2. Use the Up/Down icon to highlight the desired language, then touch the OK icon to select it. Repeat for the Region function. For the Bass Check function, highlight and select "In Phase" (this can be changed later).

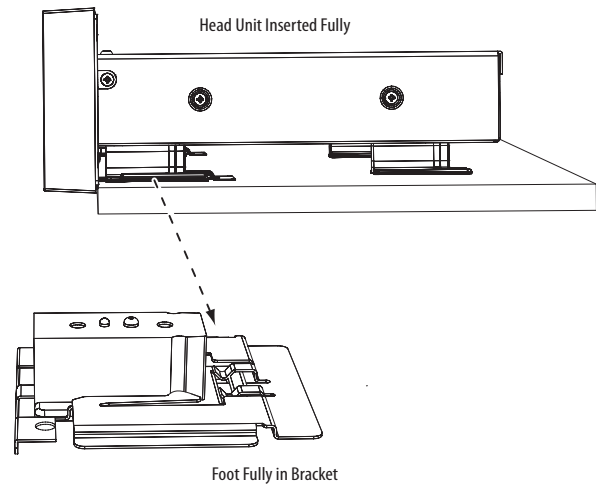
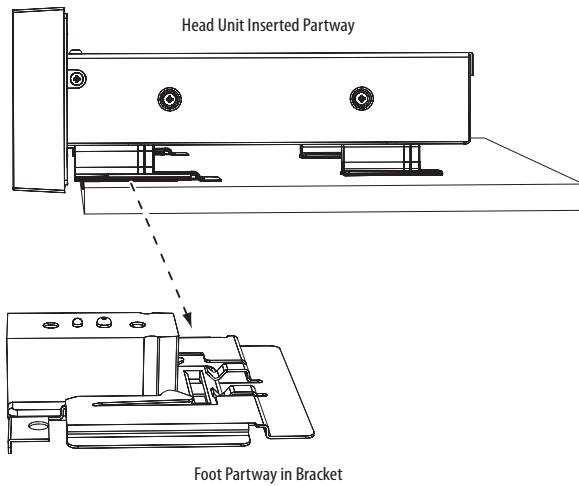
HARMAN KARDON MAESTRO KITCHEN 100 SOUND SYSTEM

Installation

3. The information screen will display "CD". Touch the OK icon.
4. Insert an audio CD into the disc slot. The disc will begin playing and the front panel will configure for CD operation.



5. Increase the volume as necessary and confirm that both door speakers work and that the subwoofer works.
 6. Touch the Eject icon to eject the CD.
- If any of the above items do not work properly, refer to the Troubleshooting guide below. Resolve all problems before performing the next step.
7. Insert the head unit fully into the mounting brackets so that it is flush with the front panel of the surrounding cabinetry.

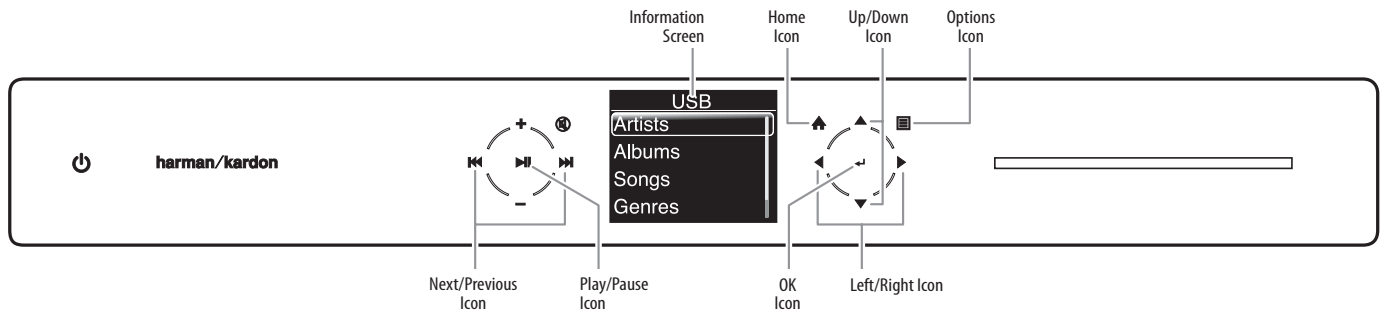


NOTE: You can remove the head unit from the cabinet by pulling it straight out with a short, firm pull.

Optional System Testing Steps

If you wish, you can use the following steps to test all of the system's input connections:

1. Connect an iPod or USB stick containing music files to one of the USB ports on the input panel. Touch the Home icon, then touch the Down icon so that "iPod" or "USB" (whichever you connected to the input panel) appears on the information screen. Touch the OK icon to change to the new input. The front panel will configure for operation of the iPod or USB input.



Front-panel configuration for USB operation. Configuration for iPod operation is identical except for the title on the Information Screen

2. Use the Up/Down icon to select a song, then touch the OK icon to play it. Confirm that music plays through the connection, then repeat steps 1 – 2 for the other USB connection.
3. If the iPod is still plugged into the USB port on the input panel, unplug it and use a stereo 3.5mm cable to connect the iPod headphone output to the Aux input on the input panel.
4. Touch the Home icon, then touch the Down icon so that "Aux" appears on the information screen and touch the OK icon to select it.
5. Play music on the iPod and confirm that music plays through the connection.

Install the Toe-Kick

Once the entire system has been installed and tested, install the toe-kick in the kitchen. Make sure to install a toe-kick grille in front of the subwoofer.

Troubleshooting

Problem	Cause	Solution
Power icon does not glow amber when power supply is connected to head unit	AC wall outlet is not live Power supply is not properly connected to head unit	<ul style="list-style-type: none"> Plug the power supply into a live AC wall outlet. Confirm that the power supply is properly connected to the head unit.
No sound from one (or both) door speaker(s)	Door speaker(s) connected improperly	<ul style="list-style-type: none"> Unplug the head-unit power supply from the AC wall outlet, and make sure the speaker(s) is properly connected at the head unit and inside the wire channel on the cabinet wall.
No sound from subwoofer	Subwoofer connected improperly	<ul style="list-style-type: none"> Unplug the head-unit power supply from the AC wall outlet and make sure that the connections between the subwoofer and the head unit are correct.
Weak bass and poor stereo imaging	Door speakers wired incorrectly	<ul style="list-style-type: none"> Unplug the head-unit power supply from the AC wall outlet, and reverse the red and plain (+) and (–) connections of only one door speaker at the head-unit speaker connector. Reconnect the head-unit power supply.
Weak bass in a system with two subwoofers	Phase cancellation between subwoofers	<ul style="list-style-type: none"> Unplug the head-unit power supply from the AC wall outlet, and reverse the red and plain (+) and (–) connections of only one subwoofer at its head-unit subwoofer connector. Reconnect the head-unit power supply.
No sound from iPod device or USB stick	Improper USB cable connection Apple cable is bad	<ul style="list-style-type: none"> Confirm that the USB cables are properly connected to the head unit. Confirm that the input panel has been properly assembled. Replace the Apple cable.
No sound from auxiliary audio source	Improper cable connection	<ul style="list-style-type: none"> Confirm that the Aux cable is properly connected to the head unit. Confirm that the input panel has been properly assembled.
Auxiliary audio source plays through only one door speaker	Cable used to connect auxiliary audio component is a mono cable	<ul style="list-style-type: none"> Use a stereo 3.5mm cable to connect an auxiliary audio source to the input panel.



HARMAN Consumer, Inc.
8500 Balboa Boulevard, Northridge, CA 91329 USA

Made in P.R.C.

© 2011 HARMAN International Industries, Incorporated. All rights reserved.

Harman Kardon is a trademark of HARMAN International Industries, Incorporated, registered in the United States and/or other countries.
Harman Kardon MaestroKitchen is a trademark of HARMAN International Industries, Incorporated.

Apple, iPod and iPhone are trademarks of Apple Inc., registered in the U.S. and other countries. iPod/iPhone not included.

Features, specifications and appearance are subject to change without notice.

Part No. 950-0345-001 Rev.: A

harman/kardon
by HARMAN

www.harmankardon.com