

Panasonic



Panasonic Consumer Electronics Company  
Division of Panasonic Corporation of North America

Two Riverfront Plaza | Newark, NJ 07102 | (201) 348-7000 | [panasonic.com](http://panasonic.com)

Design and specifications subject to change without notice

PCEC-TEL150500CAT

# 2015 Communications



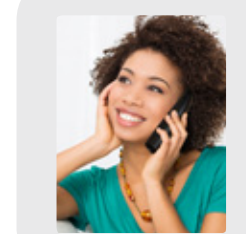
<b>CLIENT:</b> Panasonic	<b>TRIM:</b> 17" x 11"
<b>JOB TITLE:</b> Pana 2015 Communications Catalog	<b>BLEED:</b> 17-1/4" x 11-1/4"
<b>JOB#:</b> 81435	<b>FILE NAME:</b> 2015_Communications_Catalog_81435_v6.indd
19 ENGLE STREET   TENAFLY, NJ   07670   201.408.5056	
WWW.BRANDVOICEGROUP.COM	

# A Better Life, A Better World



At Panasonic, we're dedicated to improving peoples' lives and making the world a better place – one customer, one business, one technological leap forward at a time. Nowhere is this guiding principle better exemplified than in our 2015 line-up of feature-rich, easy-to-use telephones. As the lines blur between home-based and mobile communications, Panasonic makes it easy to stay in touch with groundbreaking phones that let you answer landline calls on a smartphone or tablet. Or choose from our acclaimed Link2Cell line which lets you answer incoming cell phone calls on any of your home phone handsets. We even have phones that will not only charge your smartphone but also tell you when you've received a text message.

Ultimately, we engineer everything we make with a singular goal in mind: to complement the way you live your life. And that means keeping you connected.



Panasonic Telephone Key Features .....	4-6
Premium Telephone Systems .....	7-9
Link2Cell Bluetooth® Cordless Telephone Systems .....	10-14
DECT 6.0 Digital Phones .....	15-22
Amplified Digital Phone System .....	23
Integrated Telephone Systems .....	24-26
Accessories .....	27
Telephone Glossary .....	28-29
Specification Charts .....	30-35
Optional Handsets Compatability .....	36





Still missing cell phone calls and texts while at home? Like most people, you probably don't like carrying your cell phone with you around the house. Now you can have the functionality of your cell or smart phone and the convenience of a multi-handset cordless phone system. With Panasonic Link2Cell<sup>1</sup>, you can simply park your cell phone in its charger and forget it. Link2Cell is a home phone that syncs with your cell phone via Bluetooth so you can make or receive cell phone calls using any of the cordless handsets throughout your home. Select Link2Cell models have easy initial pairing as well as class 1 Bluetooth support (330ft). Use the Phonebook Transfer feature, and transfer up to 3,000 names and numbers from your cell phone to the built-in handset directory via Bluetooth. You can even register a second cell phone to the system and assign it a distinctive ring so you'll know who the call is for. And of course, Link2Cell functions as a normal home phone and includes all the convenient features you'd expect from Panasonic.

### Talking Text Sender Alert

When a text message comes in through your linked cell or smartphone (Link2Cell), the handset will announce the name or phone number of the sender using the text-to-speech function. (select models only).

### Locates Cell

Simply press the "Locates Cell" button on the base unit if you've misplaced your cell or smartphone. This feature will locate your cell or smartphone by causing it to ring\*.

\*Cellphone cannot be in vibration or silence mode.



### Smartphone Connect

Select models feature Smartphone Connect which allows your tablet or smartphone to double as an additional handset to your home phone. So you can make or receive landline phone calls with your tablet or smartphone when it's connected to the same Wi-Fi network as your home phone. Up to 4 tablets\* or smartphones can be registered.

\*Android or iOS only.



### Smart Function Key

Models equipped with the Smart Function Key button on the handset offer a single-click solution to accessing other features, such as retrieving voice messages, viewing missed calls, receiving calls or turning alarms off.

### Advanced Silent Mode

Select models feature Advanced Silent Mode which allows you to selectively silence phone calls from a specified group. So you won't be disturbed in the evening by unwanted callers but know the phone will still ring if the kids call from college.

### Enhanced Noise Reduction

The Enhanced Noise Reduction feature available on select models lets you suppress background noise around the caller while simultaneously enhancing their voice making it easier to hear them. So a parent getting a call from their teenager at a concert can hear what time to pick them up or when a friend calls from a noisy ballgame, you can hear where to meet afterwards.

### Baby Monitor

Handsets equipped with the Baby Monitor feature will notify you via monitoring handset or a base unit, a tablet or smartphone in another room when the baby starts crying.

### Key Detector

Attach the optional Key Detector to your car key ring or other easily misplaced items and forget about ever losing them again. Using any of your telephone handsets, you can activate the Key Detector's beeping alarm and quickly track down your lost keys. Key Detector's powerful range finds objects up to 650 feet away so you'll find whatever's lost whether it's upstairs, in your car or in the yard. You can register up to four Key Detectors and give each a distinctive name, like Dave's keys, Sharon's keys, etc.



**Smartphone Charge**

No convenient electrical outlet for charging your cell phone or smartphone? Select models feature a convenient USB charging port. The KX-PRL262 and KX-PRL260 have a docking station that will charge your iPhone via a built-in Lightning™ connector\*

\*Compatible with iPhone5 , iPhone5c, iPhone 5s, iPhone6, iPhone 6 Plus, and iPod touch with Lightning™ connector.

**Text Message Alert**

Never miss an important text because you don't have your cell phone with you. Models equipped with Text Message Alert signal the home phone handsets when you receive a text on your cell phone.

**Advanced TAD Functions**

Panasonic keeps you in touch with Advanced Answering Device Functions on select models. Now you can be alerted to recorded messages whether you're at home or on the road. When a caller records a message, the base unit will beep alerting those in the house. Not at home? The phone will automatically make a call or send a message to a registered cell or office phone along with playback options.

**Intelligent Eco Mode**

This feature automatically lowers the power consumption when you're using the handset close to the base unit. Not only does it extend the available talk time, it's good for the environment. When less power is used by the handset to communicate with the base unit, battery life is prolonged which results in less frequent charging and can result in fewer batteries in landfills.

**Power Back-Up Operation (Handset)**

What happens to your phone when there's a power outage? Nothing, with select models featuring Power Back-Up Operation. A powerful battery backup system keeps you connected when the power goes out. Keep a charged handset in the base unit and you can make and receive calls with the other cordless handsets.

**Talking Caller ID**

Now you can hear who's calling from across the room without having to get up. Using text-to-speech technology, Panasonic phones featuring Talking Caller ID announce caller ID information in between rings. What could be more convenient?

**Tone Equalizer**

Everyone hears differently. To maximize clarity or accommodate hearing loss, Panasonic added Tone Equalizer control to select models. This exclusive feature actually lets you adjust bass, mid-range or treble tones in a caller's voice for maximum clarity.

**Call Block**

Store the Caller ID info of any and all unwanted callers into your phone's Call Block list so that you can eliminate future pesky calls from them. It's simple and easy to register the unwanted numbers with the dedicated "Call Block button" of select models during ringing or talking. After their information is stored, they'll get a busy signal.

**App Alerts (for Android)**

Notifies you on important information - (Text Messages, Email, Google Calendar, Low Battery, Facebook, Twitter, Instagram). Easy initial setting - Bluetooth: Class1 support.

**KX-PRL262B/W**

Link2Cell Dock Style Bluetooth® Cordless Phone System with 2 Handsets



Available in Black or White

- Link up to 2 Cell Phones<sup>1</sup>
- Charge your iPhone via Built-in Lightning™ Connector
- Play content streamed from iPhone through built-in speakers
- Handset functions as remote control for Smartphone
- Talking Text Sender Alert<sup>1,6</sup>
- Text Message Alert<sup>1</sup>
- Enhanced Noise Reduction
- Key Detector Compatible<sup>2</sup>

- Phonebook Copy from Cellular Phone via Bluetooth<sup>1</sup>
- DECT 6.0 PLUS Technology
- Talking Caller ID<sup>3,5,6</sup>
- Large, 1.8" Color Backlit Handset Display
- Intelligent Eco Mode
- All-Digital Answering System
- Expandable up to 6 handsets<sup>4</sup>

KX-PRL260B/W – 1 Handset

**KX-PRD262B/W**

Link2Cell Dock Style Bluetooth® Cordless Phone System with 2 Handsets



Available in Black or White

- Link up to 2 Cell Phones<sup>1</sup>
- Charge your Smartphone via USB
- Play content streamed from Smartphone through built-in speakers
- Handset functions as remote control for Smartphone
- Talking Text Sender Alert<sup>1,6</sup>
- Text Message Alert<sup>1</sup>
- Enhanced Noise Reduction
- Key Detector Compatible<sup>2</sup>

- Phonebook Copy from Cellular Phone via Bluetooth<sup>1</sup>
- DECT 6.0 PLUS Technology
- Talking Caller ID<sup>3,5,6</sup>
- Large, 1.8" Color Backlit Handset Display
- Intelligent Eco Mode
- All-Digital Answering System
- Expandable up to 6 handsets<sup>4</sup>

KX-PRD260B/W – 1 Handset



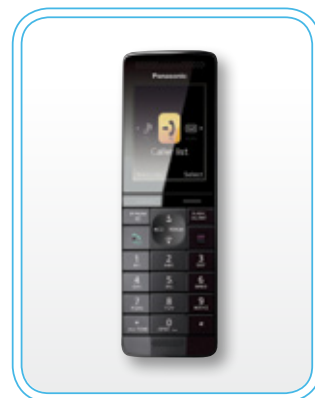
**KX-PRLA20B/W**  
Additional Digital Cordless Handset

## KX-PRW130W

Digital Cordless Phone System with Smartphone Connect



- Smartphone Connect
- Baby Monitor
- Wi-Fi Connect Capability
- Advanced TAD Functions
- Simple, Easy-to-use, TAD Button on Base
- DECT 6.0 PLUS Technology
- Talking Caller ID<sup>3,5,6</sup>
- Key Detector Compatible<sup>2</sup>
- Large, 2.2" Color Backlit Handset Display
- Intelligent Eco Mode
- Call Block<sup>3,7</sup>
- Silent Mode
- Ringer ID<sup>3,6</sup>
- Expandable up to 6 handsets<sup>4</sup>



### KX-PRWA13W

Additional Digital Cordless Handset

## KX-PRW120W

Digital Cordless Phone System with Smartphone Connect



- Smartphone Connect
- Unique-design Handset is easy to pick up and dial with one hand
- Baby Monitor
- Wi-Fi Connect Capability
- Advanced TAD Functions
- DECT 6.0 PLUS Technology
- Talking Caller ID<sup>3,5,6</sup>
- Key Detector Compatible<sup>2</sup>
- Large, 2.2" Color Backlit Handset Display
- Intelligent Eco Mode
- Call Block<sup>3,7</sup>
- Advanced Silent Mode
- Ringer ID<sup>3,6</sup>
- Expandable up to 6 handsets<sup>4</sup>



### KX-PRWA10W

Additional Digital Cordless Handset

## KX-TGF375S

Link2Cell Bluetooth® Cordless Phone System with 5 Handsets



- Link up to 2 Cell Phones<sup>1</sup>
- Easy Initial Pairing
- Bluetooth Class 1 Support—330 ft
- Dedicated Call Block Button (Handset)
- Talking Text Sender Alert<sup>1</sup>
- Baby Monitor
- Elegant, Space-saving Design
- Advanced TAD Functions
- Enhanced Noise Reduction
- Key Detector Compatible<sup>2</sup>
- Power Back-up Operation
- DECT 6.0 Technology
- Talking Caller ID<sup>3,5,6</sup>
- Large, 1.8" White Backlit Handset Display
- Intelligent Eco Mode
- Tone Equalizer
- App Alerts
- Expandable up to 6 Handsets<sup>4</sup>

KX -TGF374S – 4 Handsets  
 KX -TGF373S – 3 Handsets  
 KX -TGF372S – 2 Handsets



**KX-TGFA30S**  
 Additional Digital  
 Cordless Handset

## KX-TGH263B

Link2Cell Bluetooth® Cordless Phone System with 3 Handsets



- Link up to 2 Cell Phones<sup>1</sup>
- Talking Text Sender Alert<sup>1,6</sup>
- Smart Function Key
- Elegant, Space-saving Design
- Advanced TAD Functions
- Enhanced Noise Reduction
- Key Detector Compatible<sup>2</sup>
- Power Back-up Operation
- DECT 6.0 PLUS Technology
- Talking Caller ID<sup>3,5,6</sup>
- Large, 1.8" Color Backlit Handset Display
- Intelligent Eco Mode
- Tone Equalizer
- Silent Mode
- Expandable up to 6 Handsets<sup>4</sup>

KX-TGH262B – 2 Handsets



**KX-TGHA20B**  
 Additional Digital  
 Cordless Handset

## KX-TGE275S

Link2Cell Bluetooth® Cordless Phone System with 5 Handsets



- Link up to 2 Cell Phones<sup>1</sup>
- Talking Text Sender Alert<sup>1,6</sup>
- Text Message Alert<sup>1</sup>
- Locates Cell<sup>1</sup>
- Easy-to-use Big Buttons on Handset & Base
- Handset Volume with Dedicated Volume Key
- Smart Function key
- Advanced TAD Functions
- Key Detector Compatible<sup>2</sup>
- Power Back-up Operation
- Bluetooth Headset Capability<sup>1</sup>
- Phonebook Copy from Cellular Phone via Bluetooth<sup>1</sup>
- Talking Caller ID<sup>3,5,6</sup>
- Dial Keypad on Base
- Expandable up to 6 Handsets<sup>4</sup>

KX-TGE274S – 4 Handsets  
 KX-TGE273S – 3 Handsets  
 KX-TGE272S – 2 Handsets



**KX-TGEA20S**  
 Additional Digital Cordless Handset

## KX-TGE263S

Link2Cell Bluetooth® Cordless Phone System with 3 Handsets



- Link up to 2 Cell Phones<sup>1</sup>
- Talking Text Sender Alert<sup>1,6</sup>
- Text Message Alert<sup>1</sup>
- Locates Cell<sup>1</sup>
- Easy-to-use Big Buttons on Handset
- Handset Volume with Dedicated Volume Key
- Smart Function Key
- Advanced TAD Functions
- Enhanced Noise Reduction
- Key Detector Compatible<sup>2</sup>
- Power Back-up Operation
- Bluetooth Headset Capability<sup>1</sup>
- Phonebook Copy from Cellular Phone via Bluetooth<sup>1</sup>
- Talking Caller ID<sup>3,5,6</sup>
- Expandable up to 6 Handsets<sup>4</sup>

KX-TGE262S – 2 Handsets

## KX-TGF383M

Link2Cell Bluetooth® Corded/Cordless Phone System with 3 Handsets



- Links up to 2 Cell Phones<sup>1</sup>
- Class 1 Bluetooth Support—330ft
- Dedicated 3 One-Touch Dial Button
- Dedicated Call Block Button (Base Unit or Handset)
- App Alerts<sup>1</sup>
- Talking Caller ID<sup>3,5,6</sup>
- Battery Power Backup Operation (Base Unit or Handset)
- Baby Monitor
- Enhanced Noise Reduction (Handset and Answering System)
- Advanced TAD Functions
- DECT 6.0 Plus Technology
- Talking Text Sender Alert<sup>1,6</sup>
- Intelligent Eco Mode
- All-Digital Answering System
- Wall Mountable
- Up to 3-Way Conference Capability
- Intercom (Handset-Handset or Handset-Base Unit)
- Expandable up to 6 Handsets<sup>4</sup>

KX-TGF382M – 2 Handsets  
 KX-TGF380M – 1 Handset



**KX-TGFA30M**  
 Additional Digital Cordless Handset

## KX-TG9582B

Link2Cell Bluetooth® Corded/Cordless Phone System with 2 Handsets



- Links up to 4 Cell Phones<sup>1</sup>
- Class 1 Bluetooth Support
- 2-Line Operation
- Contact Sync
- USB Charge
- Enhanced Noise Reduction
- DECT 6.0 Technology
- Talking Caller ID<sup>3,5,6</sup>
- Text Message Alert<sup>1,6</sup>
- Call Block<sup>3,7</sup>
- Power Backup Operation
- All-Digital Answering System
- Up to 3-Way Conference Capability
- Expandable up to 12 Handsets<sup>4</sup>

KX-TG9581B – 1 Handset

## KX-TG9542B

Link2Cell Bluetooth® Cordless Phone System with 2 Handsets



- Link up to 4 Cell Phones<sup>1</sup>
- 2-Line Operation
- Supports 3 Simultaneous Conversations (2 Landlines, 1 Cell)
- USB Charge
- Text Message Alert<sup>1</sup>
- Enhanced Noise Reduction
- Key Detector Compatible<sup>2</sup>
- Power Back-up Operation
- Bluetooth Headset Capability
- Phonebook Copy from Cellular Phone via Bluetooth<sup>1</sup>

- DECT 6.0 Technology
- Talking Caller ID<sup>3,5,6</sup>
- Dial Keypad on Base
- Large, 1.8" White Backlit Handset Display
- Intelligent Eco Mode
- All-Digital Answering System
- Expandable up to 6 Handsets<sup>4</sup>

KX-TG9541B – 1 Handset



**KX-TGA950B**  
Additional Digital  
Cordless Handset

## KX-TGF345B

Digital Cordless Phone System with 5 Handsets



- Dedicated Call Block Button (Base Unit or Handset)<sup>3,7</sup>
- Talking Caller ID<sup>3,5,6</sup>
- Baby Monitor
- Power Back-up Operation
- Enhanced Noise Reduction (Handset and Answering System)
- Advanced TAD Functions
- DECT 6.0 Plus Technology
- Key Detector Compatible<sup>2</sup>
- Intelligent Eco Mode
- All-Digital Answering System
- White Backlit Handset Display
- Full-Duplex Handset Speakerphone
- Wall Mountable
- Up to 3-Way Conference Capability
- Intercom (Handset-Handset or Handset-Base Unit)
- Expandable up to 6 Handsets<sup>4</sup>

KX-TGF344B – 4 Handsets  
KX-TGF343B – 3 Handsets  
KX-TGF342B – 2 Handsets  
KX-TGF340B – 1 Handset



**KX-TGFA30B**  
Additional Digital  
Cordless Handset



## KX-TGE245B

Digital Cordless Phone System with 5 Handsets



- Locates Cell<sup>1</sup>
- Easy-to-use Big Buttons on Handset & Base
- Handset Volume with Dedicated Volume Key
- Smart Function Key
- Advanced TAD Functions
- Enhanced Noise Reduction
- Key Detector Compatible<sup>2</sup>
- Power Back-up Operation
- DECT 6.0 PLUS Technology
- Talking Caller ID<sup>3,5,6</sup>
- Dial Keypad on Base
- Large, 1.8" White Backlit Handset Display
- Expandable up to 6 Handsets<sup>4</sup>

KX-TGE244B – 4 Handsets  
 KX-TGE243B – 3 Handsets  
 KX-TGE242B – 2 Handsets  
 KX-TGE240B – 1 Handset



**KX-TGEA20B**  
 Additional Digital Cordless Handset

## KX-TGE234B

Digital Cordless Phone System with 4 Handsets



- Locates Cell<sup>1</sup>
- Easy-to-use Big Buttons on Handset
- Handset Volume with Dedicated Volume Key
- Smart Function Key
- Advanced TAD Functions
- Enhanced Noise Reduction
- Key Detector Compatible<sup>2</sup>
- Power Back-up Operation

- DECT 6.0 PLUS Technology
- Talking Caller ID<sup>3,5,6</sup>
- Large, 1.8" White Backlit Handset Display
- Intelligent Eco Mode
- Expandable up to 6 Handsets<sup>4</sup>

KX-TGE233B – 3 Handsets  
 KX-TGE232B – 2 Handsets

## KX-TGE212B

Digital Cordless Phone System with 2 Handsets



- Locates Cell<sup>1</sup>
- Easy-to-use Big Buttons on Handset
- Handset Volume with Dedicated Volume Key
- Smart Function Key
- Enhanced Noise Reduction
- Key Detector Compatible<sup>2</sup>
- Power Back-up Operation

- DECT 6.0 PLUS Technology
- Large, 1.8" White Backlit Handset Display
- Intelligent Eco Mode
- Tone Equalizer
- Expandable up to 6 Handsets<sup>4</sup>

KX-TGE210B – 1 Handset



**KX-TGEA20B**  
 Additional Digital Cordless Handset

## KX-TGD225N

Digital Cordless Phone System with 5 Handsets



- Talking Caller ID<sup>3,5,6</sup>
- Large, 1.6" White Backlit Handset Display
- Illuminated Handset Keypad
- All-Digital Answering System
- Call Block<sup>3,7</sup>
- Silent Mode
- Intelligent Eco Mode
- Handset Speakerphone
- Up to 3-Way Conference Capability
- Ringer ID<sup>3,6</sup>
- Wall Mountable
- Call Waiting Caller ID<sup>3</sup>
- Handset Locator
- Expandable to 6 Handsets<sup>4</sup>

KX-TGD224N – 4 Handsets  
 KX-TGD223N – 3 Handsets  
 KX-TGD222N – 2 Handsets  
 KX-TGD220N – 1 Handset



### KX-TGDA20N

Additional Digital Cordless Handset

## KX-TGD213N

Digital Cordless Phone System with 3 Handsets



- Large, 1.6" White Backlit Handset Display
- Illuminated Handset Keypad
- All-Digital Answering System
- Call Block<sup>3,7</sup>
- Intelligent Eco Mode
- Handset Speakerphone
- Up to 3-Way Conference Capability
- Ringer ID<sup>3,6</sup>
- Wall Mountable
- Call Waiting Caller ID<sup>3</sup>
- Handset Locator
- Expandable to 6 Handsets<sup>4</sup>

KX-TGD212N – 2 Handsets  
 KX-TGD210N – 1 Handset



### KX-TGDA20N

Additional Digital Cordless Handset

## KX-TGC222S

Digital Cordless Phone System with 2 Handsets



- Large, 1.6" Amber Backlit Handset Display
- Illuminated Handset Keypad
- All-Digital Answering System
- Call Block<sup>3,7</sup>
- Silent Mode
- Intelligent Eco Mode
- Handset Speakerphone

- Up to 3-Way Conference Capability
- Call Waiting Caller ID<sup>3</sup>
- Handset Locator
- Intercom (Handset-Handset)
- Expandable to 6 Handsets<sup>4</sup>

KX-TGC220S – 1 Handset



### KX-TGDA20S

Additional Digital Cordless Handset

## KX-TGC212S/W

Digital Cordless Phone System with 2 Handsets



Available in Silver or White

- Large, 1.6" Amber Backlit Handset Display
- Illuminated Handset Keypad
- Call Block<sup>3,7</sup>
- Silent Mode
- Intelligent Eco Mode
- Handset Speakerphone
- Up to 3-Way Conference Capability

- Call Waiting Caller ID<sup>3</sup>
- Handset Locator
- Intercom (Handset-Handset)
- Hearing Aide Compatible (TIA-1083 Compliant)
- Expandable to 6 Handsets<sup>4</sup>

KX-TGC210S – 1 Handset

## KX-TG4223B

Digital Cordless Phone System with 3 Handsets



- DECT 6.0 Plus Technology
- Compact Base Unit
- Easy-to-use Big Buttons on Handset & Base
- Intelligent Eco Mode
- All-Digital Answering System
- Amber Backlit Handset Display
- Handset Speakerphone
- Light-up Indicator with Ringer/Charge Alert
- Wall Mountable
- Up to 4-Way Conference Capability
- Handset Locator
- Intercom (Handset-Handset)
- Call Waiting Caller ID<sup>3</sup>
- Expandable up to 6 Handsets<sup>4</sup>



### KX-TGA421

Additional Digital Cordless Handset

## KX-TGF353N

Cordless/Corded Phone System with 3 Handsets



- Dedicated Call Block Button (Base Unit or Handset)<sup>3,7</sup>
- Dedicated 3 One-Touch Dial Button
- Talking Caller ID<sup>3,5,6</sup>
- Baby Monitor
- Battery Power Backup Operation (Base Unit or Handset)
- Enhanced Noise Reduction (Handset and Answering System)
- Advanced TAD Functions
- DECT 6.0 Plus Technology
- Key Detector Compatible<sup>2</sup>
- Intelligent Eco Mode
- All-Digital Answering System
- White Backlit Handset Display
- Handset Speakerphone
- Wall Mountable
- Up to 3-Way Conference Capability
- Intercom (Handset-Handset or Handset-Base Unit)
- Expandable up to 6 Handsets<sup>4</sup>

KX-TGF352N – 2 Handsets  
KX-TGF350N – 1 Handset



### KX-TGFA30N

Additional Digital Cordless Handset

## KX-TG6592T

Amplified Cordless Phone System with 2 Handsets



- DECT 6.0 PLUS Technology
- Amplified Handset Volume with Dedicated Volume Key
- Talking Caller ID<sup>3,5,6</sup>
- Intelligent Eco Mode
- Tone Equalizer
- Easy-to-See LCD with Big Buttons
- Speed Dial on Base & Handset
- Hands-Free Speakerphone on Base & Handset
- Call Block<sup>3,7</sup>
- Silent Mode
- White Backlit LCD on Handset
- Non-Slip Handset Design
- Ringer ID<sup>3,6</sup>
- Up to 4-Way Conference Capability<sup>4</sup>
- Expandable to 6 Handsets<sup>4</sup>

KX-TG6591T – 1 Handset



### KX-TGA659T

Additional Digital Cordless Handset

## KX-TS880B/W

Integrated Phone System

- 2-Step Tilt Angle
- Navigation Key
- Hands-Free Speakerphone
- Programmable Flash Time Setting
- Extra-Long 15.6" Curl Cord
- Ringer Indicator (LED)
- Call Waiting Caller ID<sup>2</sup>
- 30 One-Touch Dialer Stations: 10 One-Touch & 20 Two-Touch
- Dial Lock
- Redial (Last 20 numbers Dialed)
- Wall Mountable



Available in Black or White

## KX-TS620B/W

Integrated Phone System

- All-Digital Answering System
- 2-Way Recording
- Speakerphone
- Call Waiting Caller ID<sup>3</sup>
- 3 One-Touch Memory Buttons
- 3-Line Dot LCD
- Ringer Indicator (LED)
- Redial (Last 20 numbers Dialed)
- Electronic Volume Controls for Speakerphone (8-Step) and Handset (4-Step)
- Wall Mountable



Available in Black or White

## KX-TS840B/W

Integrated Phone System

- 2-Step Tilt Angle
- Battery-free Operation
- Hands-Free Speakerphone
- Programmable Tone/Pulse Selection
- 3-Step Ringer Volume Adjustment
- Extra-Long 15.6" Curl Cord
- Ringer Indicator (LED)
- Call Waiting Caller ID<sup>3</sup>
- 20 One-Touch Dialer Stations
- 10 Station Speed Dial
- Headset Jack
- Last Number Redial
- Wall Mountable



Available in Black or White

## KX-TS500B/W

Integrated Phone System

- Wall Mountable
- Switchable Tone/Pulse
- Last Number Redial
- Electronic Handset Volume Control (6-Step)
- 3-Step Ringer Selector (Off/Low/High)
- Flash
- Wall Mountable



Available in Black or White

## KX-TSC11B/W

Integrated Phone System

- 50-Station Caller ID Memory and Dialer
- 50-Station Phonebook and Dialer
- Call Waiting<sup>3</sup>
- Phone Company Voice Mail Compatible (FSK Compatible)<sup>3</sup>
- Chain Dial
- Programmable Call Restriction
- 3-Step Ringer Volume Control
- Switchable Tone/Pulse Setting



Available in Black or White

## KX-TS208W

Integrated Phone System

- 2-Line Operation
- Up to 3-Way Conference Capability<sup>4</sup>
- Distinctive Ring
- 16-Digit LCD with Clock
- Hands-Free Speakerphone
- 20 One-Touch Dialer Stations
- 10-Station Speed Dialer
- Hands-Free Headset Compatible
- Electronic Volume Controls for Speakerphone
- Dial Lock
- 3-Step Ringer Volume Control
- Programmable Call Restriction



## KX-TS108W

Integrated Phone System

- 2-Line Operation
- Up to 3-Way Conference Capability<sup>4</sup>
- Distinctive Ring
- 16-Digit LCD with Clock
- Hands-Free Speakerphone
- 20 One-Touch Dialer Stations
- 10-Station Speed Dialer
- Hands-Free Headset Compatible
- Electronic Volume Controls for Speakerphone
- Dial Lock
- 3-Step Ringer Volume Control
- Programmable Call Restriction



## KX-TGA20B

Key Detector

- Find keys and other object up to 650ft away depending on environmental conditions.
- Powerful beep indicates location of keys, even from a distance.
- Use up to 4 Key Finders per compatible phone. Search for individual Key Finders.



## KX-TGA405B

Range Extender

- Doubles the effective transmission distance between the base unit and the cordless handset.
- Compatible with Panasonic TGE, TGC, TGD, TGH, PRW, PRX, PRD, PRL, PRS, TGF, and select models for TGx series models.



## KX-TCA430

Lightweight Headset

- Adjustable, Flexible Microphone Provides Optimal Voice Clarity
- Convenient In-Cord Volume Control
- Mute Switch
- Reversible for Use with Either Ear
- Cord Clip



## KX-TCA400

Lightweight Headset

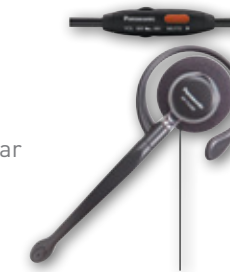
- Adjustable, Flexible Microphone Provides Optimal Voice Clarity
- Reversible for Use with Either Ear
- Cord Clip



## KX-TCA93

Clip-on Headset

- Adjustable, Flexible Microphone Provides Optimal Voice Clarity
- Reversible for Use with Either Ear
- Cord Clip



## KX-TCA60

Hands-Free Headset

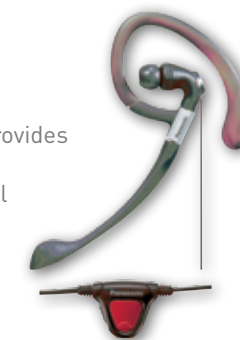
- 2.5mm Connection
- Provides Hands-Free Usage
- Reversible for Use with Either Ear
- Adjustable Microphone
- 4-Foot Cord



## KX-TCA94B

Clip-on Headset

- Adjustable, Flexible Microphone Provides Optimal Voice Clarity
- Convenient In-Cord Volume Control
- Mute Switch
- Reversible for Use with Either Ear
- Cord Clip



**2-Way Paging/Automatic Intercom** You can page and communicate between the handset and the base.

**2-Way Radio Mode** Use the expandable handsets away from the base unit to communicate from one handset to another.

**2-Way Conversation Record** Use 2-way recording to save a telephone conversation for later playback.

**3-Color Light-Up Indicator with Ringer/VM Alert (4 Available Options)**

Select from blue, green, amber or multi-color options. The light-up indicator will flash quickly to show that you have an incoming call, and it will flash slowly to let you know that you have a new message in your voice mailbox.

**Advanced Silent Mode** The Advanced Silent Mode allows you to selectively silence phone calls from a specified group when the phone is set in this mode.

**Advanced TAD Functions** Enhanced Telephone Answering Device functionality in which the unit beeps to alert those at home that a message has been recorded and also forwards recorded messages to a registered cell or office phone along with playback options.

**All-Digital Answering System** Messages are recorded on an advanced microchip for quiet operation and easy retrieval. The total recording time is 15 minutes for most models, but they vary up to 60 minutes of total recording time.

**All-Digital Voice Mail System** The digital voice mail system can contain up to 8 mailboxes, with a total recording time of up to 100 minutes. It features individual mailbox greetings, mailbox access from any cordless station, auto attendant, voice prompts, time/day stamps and much more.

**App Alert (for Android)** Notifies you of important information - Text messages, EMail, Google Calendar, Low Battery, Facebook, Twitter, Instagram ) Easy initial setting - Bluetooth: Class1 support.

**Auto Message Delete** You can program your mailbox to automatically delete all messages when they become one month old.

**Baby Monitor** The handset in baby's room will notify you via an additional handset, a tablet or smartphone in another room when the baby starts crying.

**Bilingual Display** The LCD language can be set to either English or Spanish.

**Call Block** Allows the user to block unwanted calls by entering Caller ID info into the phone's call block memory.

**Caller ID** The LCD readout can display the caller's name and number, so you can see at a glance who's calling. You can also enjoy the convenience of printing the list of Caller ID activity to review.

**Caller ID Call Waiting** Displays the name and number of incoming callers, even if you're on another call. Up to 50 names and numbers can be stored in the memory for easy retrieval and direct callback.

**Call Screening** A monitor speaker allows you to hear incoming messages as they're being recorded.

**Call Transfer** You can transfer an outside call from the base unit to a cordless handset or from one cordless handset to another.

**Chain Dial** Search your phone book and dial a number you previously programmed during a phone call. This feature can be useful for those who frequently use "calling cards."

**Choice Mail** Lets you view and retrieve recorded messages without having to listen to portions of others to find the one you want.

**Contact Sync** Feature that allows syncing of your telephone and Microsoft Outlook on a PC. Incoming calls trigger a pop-up window in Outlook that shows caller contact information. Also enables outbound calling by clicking contacts in Outlook.

**Customized Ringer** Use this feature for unlimited free recording of your favorite songs or sounds that you can set as your telephone ringer. All you need is the included audio cable and the music or sound. (Maximum recording time is 2 minutes, depending on the model).

**Data Port** A phone jack built into the base lets you easily hook up a computer, modem, fax or answering machine.

**DECT 6.0 (Digital Enhanced Cordless Telecommunication)** Operates on the 1.9GHz frequency and offers excellent sound quality reduced interference, long range and extended battery life.

**DECT 6.0 Plus Technology** Enhanced version of DECT 6.0 in which transmission quality and range are improved by increasing the frequency of error correction up to 80x.

**Digital Duplex Speakerphone** Delivers crisp, natural sound without dropouts or clipping. Use the speakerphone for hands-free operation or to allow others in the room to join in your conversation.

**Digital Handset Speakerphone** A digital duplex speakerphone on the back of the handset enables convenient, high-quality hands-free conversations.

**Dual Keypads** Lets you dial from the base so you can make calls without using the handset.

**Enhanced Noise Reduction** Suppresses background noise around the caller while simultaneously enhancing their voice making it easier to discern the caller's speech.

**Expandable** Up to seven additional handsets can be added to the phone system for a total of 8 handsets (depending on model) while using only one base unit and one phone jack.

**GM** Greeting Message.

**Handset Locator** To locate a misplaced handset, simply touch a button on the base and the handset will ring.

**Handset Volume Control** Lets you adjust the handset volume to your preference.

**Headset Jack (and Belt Clip)** A standard 2.5mm jack enables you to connect an optional headset to the unit for hands-free conversations (on the go).

**High Resolution Amber-Glow Backlit LCD (1.4")** Easy operation amber glow backlit LCD with icon menu.

**ICM** Incoming Message.

**Icon Operation** Phone operation is made easy by choosing from clearly defined icons in the menu to select and set your phone feature options.

**Intelligent Eco Mode** Automatically lowers power consumption when handset is used close to the base unit.

**Key Detector** Uses a transmitting fob that can be attached to car keys or other objects. When Key Detector is activated using a handset, the fob beeps loudly letting you easily find the missing article.

**Lighted Handset Keypad** The keypad is illuminated for easy dialing in darkened rooms.

**Light-Up Indicator with Ringer/Message (or VM) Alert** The indicator will flash quickly to show that you have an incoming call, and it will flash slowly to let you know that you have a new message.

**Light-Up ID** Choose a light-up indicator color to link to your pre-programmed phone book data. The pre-programmed indicator light will occur when the corresponding Caller ID information is received from an incoming call.

**Line Status LED Indicators** Lets you know in a glance which line is in use.

**Link2Cell** Feature that lets you sync your cell or smart phone to your Panasonic home phone handset. Cell phone calls can then be made or received using your Panasonic handset.

**Locates Cell** The "Locates Cell" button on the base unit will locate your cell or smartphone by causing it to ring.

**Memo Recording** Instead of leaving a note you can record memos for family or friends.

**Memory Redial** Use the memory redial button to recall, and dial, any one of the last five dialed phone numbers.

**Multi-Line Operation with 3-Way Conferencing** Several users can make separate calls simultaneously where multiple lines are installed. It also allows you to conference two outside calls together with one system handset, or to conference two system handsets together with one outside call.

**Name/Number Caller ID** Displays the name and phone number of incoming callers on the LCD readout. Also, when you listen to your messages, it will show the Caller ID data for each person who left a message as their message plays.

**New Message Playback** Touch a button and the unit will play only the messages you haven't heard before.

**Ni-MH Battery Included** Ni-MH batteries have an advantage over Ni-Cd batteries in that they do not have memory effect, and the absence of cadmium in the Ni-MH battery makes it more environmentally friendly than the Ni-Cd battery.

**One-Touch Direct Dial Button** Lets you store an important phone number in memory for dialing at the touch of a button.

**One-Touch Intercom Buttons** You can page and communicate between the base and each extension at the touch of a button.

**Phone Directory and Dialer** Up to 50 names and telephone numbers (30 on certain models) can be stored and quickly accessed for dialing using the phone's navigator key or jog dial.

**Phone Book Sharing** Once you have programmed all your names and phone numbers into one of your handsets you can then share that phone book with any other handset in the system.

**Power Back-Up Operation** A powerful battery back-up system keeps you connected when the power goes out. Keep a charged handset in the base unit and you can still make and receive calls with the other cordless handsets.

**Range Boost** Improved, built-in antenna which extends transmission range by up to 20% compared to models without Range Boost.

**Range Extender** Repeating device that extends the effective transmission distance between the base unit and cordless handsets.

**Remote Operation with Tone Remote Control** When checking your messages on a touch tone keypad while away from home, you can control the Greeting Message, All Message Playback and Individual Message Erase.

**Reversible Handset Design** Lets you place the handset in the base, for charging, with the keypad and LCD facing up or down.

**Ringer ID** Choose from a downloaded or selectable ringer to link to your preprogrammed phone book data. The preprogrammed ringer will occur when the corresponding Caller ID information is received from an incoming call.

**Rubberized Grip** Non-slip strip on the handset perimeter to allow easier cradling and help prevent dropping.

**Selectable Ringtones** Choose from up to 7 different options when selecting what you would like to hear when your phone rings.

**Silent Mode** Allows the user to program individual handsets to ring or remain silent for specified time periods without affecting other handsets.

**Simultaneous Base/Handset Calling** The base and handset can be used on separate phone lines for two different calls.

**Skip and Repeat Function** Lets you selectively review your messages.

**Smart Function Key** The Smart Function Key button on the handset offers a single click solution to other features, such as retrieving voice messages, viewing missed calls, receiving calls or turning off alarms.

**Smartphone Connect** The Smartphone Connect feature allows your tablet or smartphone to function as a handset to your home phone. You can make or receive a landline phone call with your tablet or smartphone when it's connected to the same Wi-Fi network as your home phone.

**Smart Wall-Mount** Combines a low-profile base unit with a reversible pedestal for counter/desktop use or easy wall mounting by simply rotating the pedestal.

**SMS Alert** Function which signals the Panasonic home phone handset when you receive a text or your cell on smart phone.

**Station Speed Dialer** Lets you store and quickly dial as many as 10 frequently called phone numbers, depending on the model. Each station can hold up to 32 digits, giving you enough room to include your favorite long-distance access code (i.e., 10-10-XXX).

**Talking Alarm** Uses text-to-speech technology to make pre-programmed announcements.

**Talking Battery** Uses text-to-speech technology to remind the user when the handset needs charging.

**Talking Caller ID** When a call comes in, the phone doesn't just let you see who's calling, it actually tells you who's calling. Using text-to-speech technology the caller's name is announced in between rings if name-and-number Caller ID information is available.

**Telephone Directory Navigator** Lets you save and quickly recall your most important phone numbers. Up to 122 numbers can be stored, depending on the model.

**Text Message Alert** Function which signals the Panasonic home phone handset when you receive a text or your cell phone or smartphone.

**Toll saver** When checking your messages from a remote location, the system will answer on the first ring if you have any new messages. If it doesn't, you can then hang up to avoid toll charges.

**Tone Equalizer** Allows user to customize the tone of incoming calls, increasing or decreasing bass, mid-range or treble tones per the user's preference.

**USB Charge** USB port on select Panasonic phone base units suitable for cell or smartphone charging.

**Voice Menu and Time/Day Stamp** Digital voice prompts clearly inform you of the time and day that each message was recorded.

**Voice Prompts and Time/Day Stamp** A voice synthesizer will prompt callers through the messaging system, and will stamp each incoming message with the time and day it was received.

#### Telephone Explanatory Notes

- 1 Cell phone must have Bluetooth® capability and must be compatible to this cordless phone system.
- 2 Requires optional Key Detector fob sold separately.
- 3 Requires subscription to name-and-number Caller ID, Call Waiting and/or Voice Mail services offered by certain local telephone companies for a fee.
- 4 May require optional accessory handset sold separately depending on the model.
- 5 Name pronunciations may vary. Name pronunciation quality is based on names most commonly used in the United States.

- 6 Requires name and number registration in phonebook function.
- 7 Requires number registration in the Call Block list.

- The Bluetooth word mark and logos are owned by the Bluetooth SIG, Inc. and any use of such marks by Panasonic is under license.
- Other trademarks and trade names are those of their respective owners.

	KX-PRL262B	KX-PRD262B	KX-PRW130W	KX-PRW120W
<b>General</b>				
Color	Black	Black	White	White
Frequency	1.9 GHz	1.9 GHz	1.9 GHz	1.9 GHz
System	DECT 6.0	DECT 6.0	DECT 6.0	DECT 6.0
Number of Channels	60 Channels	60 Channels	60 Channels	60 Channels
Number of Phone Lines	1	1	1	1
Multiple Handset Capability	Up to 6	Up to 6	Up to 6 Handsets	Up to 6
LCD Language	English, Spanish	English, Spanish	English, Spanish	English, Spanish
Wi-Fi® Connection	-	-	Y (IEEE 802.11 b/g/n)	Y (IEEE 802.11 b/g/n)
Android™ OS Version	-	-	-	-
Intelligent ECO Mode	Y	Y	Y	Y
Smartphone Connect	-	-	Y	Y
Link-to-Cell *1	Y	Y	-	-
Text Message Alert *1	Y	Y	-	-
Talking Text Sender Alert *1	Y	Y	-	-
USB Charging	Y	Y	-	-
Smartphone Docking Station	Y	Y	-	-
Smartphone Stand	Y	Y	-	-
Stereo Speaker	Y	Y	-	-
Compatible Devices of Battery Charging	iPhone 5, iPhone 5s, iPhone 5c, iPod Touch with Lightning connector	Smartphone with USB Connector	-	-
Playing Music from a Bluetooth Device	Y	Y	-	-
Music Player Remote Control by DECT Handset	Y	Y	-	-
Key Detector Compatible *2	Y / Up to 4	Y / Up to 4	Y / Up to 4	Y / Up to 4
Enhanced Noise Reduction	Y	Y	Y	Y
Tone Equalizer	Treble/Bass	Treble/Bass	Treble/Bass	Treble/Bass
Baby Monitor	-	-	Y	-
Smart Function Key	Y (NR Key)	Y (NR Key)	-	-
Silent Mode	Y	Y	Y	Y
Conference Call with Outside Line *4	Up to 3-Way	Up to 3-Way	Up to 3-Way	Up to 3-Way
Intercom (Handset to Base Unit)	Y	Y	-	-
Intercom (Handset to Handset)	Y	Y	Y	Y
Clock	Y	Y	Y	Y
Alarm (Wake-up / Memo alarm)	Y / Y	Y / Y	Y / Y	Y / Y
Bluetooth® Headset Capability (HSP Support)	-	-	-	-
Google Play™ Support	-	-	-	-
<b>Caller ID/Phonebook</b>				
Caller ID / Memory *3	Y / 50 Items	Y / 50 Items	Y / 50 Items	Y / 50 Items
Category Ringer / Ringer ID *3	Y	Y	Y	Y
Talking Caller ID *3*5*6	Y	Y	Y	Y
Call Block *3*7	Y (250 numbers)	Y (250 numbers)	Y (100 numbers)	Y (100 numbers)
Handset Phonebook Memory (Name/Number)	-	-	-	-
Base Unit Phonebook Memory (Name/Number)	1 name + 1 phone number: 3,000 entries, 1 name + 2 phone numbers: 1,500 entries, 1 name + 3 phone numbers: 1,000 entries (16char/24digits)	1 name + 1 phone number: 3,000 entries, 1 name + 2 phone numbers: 1,500 entries, 1 name + 3 phone numbers: 1,000 entries (16char/24digits)	1 name + 1 phone number: 500 items, 1 name + 2 phone numbers: 250 items, 1 name + 3 phone numbers: 166 items (16char/24digits)	1 name + 1 phone number: 500 items, 1 name + 2 phone numbers: 250 items, 1 name + 3 phone numbers: 166 items (16char/24digits)
Phonebook Copy from Cellular Phone via Bluetooth	Y	Y	-	-
<b>Handset</b>				
LCD	1.8 inch FullDot TFT Color, 65K Colors, 128x160 pixels	1.8 inch FullDot TFT Color, 65K Colors, 128x160 pixels	2.2 inch FullDot TFT Color, 65K Colors, 240x320 pixels (QVGA)	2.2 inch FullDot TFT Color, 65K Colors, 240x320 pixels (QVGA)
LCD Backlight Color	White	White	White	White
Touchscreen	-	-	-	-
Front Camera	-	-	-	-
GPS	-	-	-	-
SD Memory Card Slot	-	-	-	-
USB Jack	-	-	-	-
USB Version	-	-	-	-
Lighted Handset Keypad	White	White	White	White
Speakerphone (Volume Steps)	Y (6-step)	Y (6-step)	Y (6-step)	Y (6-step)
Redial Memory	5 (Name & Number)	5 (Name & Number)	5 (Name & Number)	5 (Name & Number)
Headset Jack	-	-	-	-
Rechargeable Battery	Ni-MH (AAA x 2)	Ni-MH (AAA x 2)	Ni-MH (AAA x 2)	Ni-MH (AAA x 2)
Talk Time	Up to 10 hours	Up to 10 hours	Up to 11 hours	Up to 11 hours
Standby Time	Up to 144 hours (6 days)	Up to 144 hours (6 days)	Up to 168 hours (7 days)	Up to 168 hours (7 days)
<b>Base Unit</b>				
Display	-	-	7-segment LED, 2 digits	7-segment LED, 2 digits
Speakerphone (Volume Steps)	Y (8-step)	Y (8-step)	-	-
Handset Locator	Y	Y	Y	Y
Wall Mountable	-	-	-	-
<b>Answering System</b>				
Answering System	Y	Y	Y	Y
Total Recording Time	About 18 min	About 18 min	About 38 min	About 38 min
Audible Message Alert	Y (Base Unit)	Y (Base Unit)	Y (Base Unit)	Y (Base Unit)
New Message Notification by a Call	Y	Y	Y	Y
Message Alert (Light-Up Indicator on Handset)	-	-	-	-
Remote Operation from Handset	Y	Y	Y	Y
Remote Operation from Outside (DTMF)	Y	Y	Y	Y
Toll Saver (New Messages Recorded / No New Message)	2/5	2/5	2/5	2/5
<b>Dimensions/Weight</b>				
Optional Handset	KX-PRLA20	KX-PRLA20	KX-PRWA13	KX-PRWA13
Base Unit Dimensions W x D x H (in.)	Approx. 6.3 x 4.0 x 4.6	Approx. 6.3 x 4.0 x 4.6	Approx. 6.5 x 3.2 x 2.0	Approx. 6.5 x 3.2 x 2.0
Handset Dimensions W x D x H (in.)	Approx. 1.8 x 0.9 x 6.1	Approx. 1.8 x 0.9 x 6.1	Approx. 1.9 x 1.0 x 5.8	Approx. 1.9 x 1.0 x 5.8
Charger Dimensions W x D x H (in.)	Approx. 2.8 x 2.8 x 1.6	Approx. 2.8 x 2.8 x 1.6	Approx. 3.1 x 2.1 x 3.2	Approx. 3.1 x 2.1 x 3.2
Base Unit Weight (oz.)	Approx. 11.7	Approx. 11.7	Approx. 6.0	Approx. 6.0
Handset Weight with Battery (oz.)	Approx. 3.9	Approx. 3.9	Approx. 3.9	Approx. 3.9
Charger Weight (oz.)	Approx. 1.8	Approx. 1.8	Approx. 2.5	Approx. 2.5

	KX-TGF375S	KX-TGH263B	KX-TGE275S	KX-TGE263B	KX-TGF345B
<b>General</b>					
Color	Silver	Black	Silver	Black	Silver
Frequency	1.9 GHz	1.9 GHz	1.9 GHz	1.9 GHz	1.9 GHz
Frequency Range	1.92 GHz - 1.93 GHz	1.92 GHz - 1.93 GHz	1.92 GHz - 1.93 GHz	1.92 GHz - 1.93 GHz	1.92 GHz - 1.93 GHz
System	60 Channels	DECT 6.0	DECT 6.0	DECT 6.0	60 Channels
Number of Channels	DECT6.0	60 Channels	60 Channels	60 Channels	DECT6.0
Number of Phone Lines	1	1	1	1	1
Multiple Handset Capability	Up to 6 Handsets	Up to 6	Up to 6	Up to 6	Up to 6 Handsets
Multiple Base Units Capability	-	-	-	-	-
LCD Language	English, Spanish	English, Spanish	English, Spanish	English, Spanish	English, Spanish
Intelligent ECO Mode	Y	Y	Y	Y	Y
Link-to-Cell *1	Y	Y	Y	Y	-
Text Message Alert *1	Y	Y	Y	Y	-
Talking Text Sender Alert *1	Y	Y	Y	Y	-
Key Detector Compatible *2	Y	Y	Y	Y	Y
Multiple Key Detector Capability	Up to 4 Key Detectors	Up to 4	Up to 4	Up to 4	Up to 4 Key Detectors
Range Extender Available	Y	Y	Y	Y	Y
Enhanced Noise Reduction	Y	Y	Y	Y	Y
Tone Equalizer	Treble/Bass	Treble/Bass	Treble/Bass	Treble/Bass	Treble/Bass
Compatible with Hearing Aid T-Coil (TIA-1083 Compliant)	Y	Y	Y	Y	Y
Power Back-Up Operation	Y	Y	Y	Y	Y
Smart Function Key	-	Y (NR Key)	Y (NR Key)	Y (NR Key)	-
Silent Mode	Y	Y	Y	Y	Y
Conference Call with Outside Line *4	Up to 3-Way	Up to 3-Way	Up to 3-Way	Up to 3-Way	Up to 3-Way
Intercom (Handset to Base Unit)	Y	-	Y	-	Y
Intercom (Handset to Handset)	Y	Y	Y	Y	Y
Clock	Y	Y	Y	Y	Y
Alarm (Wake-up / Memo alarm)	Y/Y	Y / Y	Y / Y	Y / Y	Y/Y
Bluetooth® Headset Capability (HSP Support)	Y	Y	Y	Y	Y
Belt Clip Included	Y	-	Y	Y	Y
<b>Caller ID/Phonebook</b>					
Caller ID / Memory *3	Y / 50 Items	Y / 50 Items	Y / 50 Items	Y / 50 Items	Y / 50 Items
Call Waiting Caller ID *3	Y	Y	Y	Y	Y
Category Ringer / Ringer ID *3	Y	Y	Y	Y	Y
Talking Caller ID *3*5*6	Y	Y	Y	Y	Y
Call Block *3*7	Y (250 numbers)	Y (250 numbers)	Y (250 numbers)	Y (250 numbers)	Y (250 numbers)
Base Unit Phonebook Memory (Name/Number)	3000Items (16char/24digits)	1 name + 1 phone number: 3,000 entries, 1 name + 2 phone numbers: 1,500 entries, 1 name + 3 phone numbers: 1,000 entries (16char/24digits)	3000 Items (16char/24digits)	3000 Items (16char/24digits)	3000Items (16char/24digits)
Phonebook Copy from Cellular Phone via Bluetooth	Y	Y	Y	Y	-
Speed Dial / Chain Dial (Handset)	Y/Y	Y / Y	Y / Y	Y / Y	Y/Y
<b>Handset</b>					
LCD	1.8 inch FullDot Monochrome 103x65 pixels	1.8 inch FullDot TFT Color, 65K Colors, 128x160 pixels	1.88 inch FullDot Monochrome 103x65 pixels	1.88 inch FullDot Monochrome 103x65 pixels	1.8 inch FullDot Monochrome 103x65 pixels
LCD Backlight Color	White	White	White	White	White
Lighted Handset Keypad	Amber	White	Amber	Amber	Amber
Speakerphone (Volume Steps)	Y (7-step)	Y (6-step)	Y (7-step)	Y (7-step)	Y (7-step)
Ringer Pattern (Tone+Melody)	PSTN:15(5+10) CELL:15(5+10)+InbandTone	PSTN:20(5+15) CELL:20(5+15)+InbandTone	PSTN:15(5+10), CELL:15(5+10)+InbandTone	PSTN:15(5+10), CELL:15(5+10)+InbandTone	PSTN:15(5+10), CELL:15(5+10)+InbandTone
Receiver Volume Steps	5	4	5	5	5
Redial Memory	5 (Name & Number)	5 (Name & Number)	5 (Name & Number)	5 (Name & Number)	5 (Name & Number)
Headset Jack	Y	Y	Y	Y	Y
Wall Mountable (Charger)	Y	Y	Y	Y	Y
Rechargeable Battery	Ni-MH(AAA x 2)	Ni-MH (AAA x 2)	Ni-MH (AAA x 2)	Ni-MH (AAA x 2)	Ni-MH(AAA x 2)
Talk Time	13 hours	Up to 10 hours	Up to 10 hours	Up to 10 hours	13 hours
Standby Time	12 days	Up to 144 hours (6 days)	Up to 192 hours (8 days)	Up to 192 hours (8 days)	12 days
Charge Time	7 hours	About 7 hours	About 7 hours	About 7 hours	7 hours
<b>Base Unit</b>					
Dial Keypad	Y	-	Y	-	Y
Display	2.5inch mono 103x39pixels 2Line+Softkey or Pict+1Line+Softkey	-	7-segment LED, 2 digits	7-segment LED, 2 digits	2.5inch mono 103x39pixels 2Line+Softkey or Pict+1Line+Softkey
Speakerphone (Volume Steps)	Y (8-step)	-	Y (8-step)	-	Y (8-step)
Ringer Pattern (Tone+Melody)	PSTN:1(1+0) CELL:1(1+0)+InbandTone	PSTN:1(1+0), CELL:1(1+0)+InbandTone	1(1+0)	PSTN:1(1+0), CELL:1(1+0)+InbandTone	1(1+0)
Redial Memory	10(Name & Number)	-	1	-	10(Name & Number)
Locates Cell	-	-	Y	-	-
Hold	-	-	Y	-	Y
Handset Locator	Y	Y	Y	Y	Y
Wall Mountable	Y	-	Y	Y	Y
<b>Answering System</b>					
Answering System	Y	Y	Y	Y	Y
Total Recording Time	About 18 min	About 18 min	About 18 min	About 18 min	About 17 min
Audible Message Alert	Y (Base Unit)	Y (Base Unit)	Y (Base Unit)	Y (Base Unit)	Y (Base Unit)
New Message Notification by a Call	Y	Y	Y	Y	Y
Message Alert (Light-Up Indicator on Handset)	-	-	-	-	-
Remote Operation from Handset	Y	Y	Y	Y	Y
Remote Operation from Outside (DTMF)	Y	Y	Y	Y	Y
Toll Saver (New Messages Recorded / No New Message)	2/5	2/5	2/5	2/5	2/5
<b>Dimensions/Weight</b>					
Optional Handset	KX-TGFA30	KX-TGHA20	KX-TGEA20	KX-TGEA20	KX-TGFA30
Base Unit Dimensions W x D x H (in.)	Approx. 7.0 x 4.5 x 4.0	Approx. 4.2 x 3.6 x 3.0	Approx. 7.8 x 3.5 x 3.3	Approx. 5.4 x 3.5 x 3.2	Approx. 7.0 x 4.5 x 4.0
Handset Dimensions W x D x H (in.)	Approx. 1.9 x 1.2 x 6.6	Approx. 1.8 x 0.9 x 6.1	Approx. 2.2 x 1.3 x 6.8	Approx. 2.2 x 1.3 x 6.8	Approx. 1.9 x 1.2 x 6.6
Charger Dimensions W x D x H (in.)	Approx. 2.8 x 2.9 x 1.5	Approx. 2.9 x 2.9 x 1.6	Approx. 2.9 x 2.9 x 1.5	Approx. 2.9 x 2.9 x 1.5	Approx. 2.8 x 2.9 x 1.5
Base Unit Weight (oz.)	Approx. 12.5	Approx. 4.3	Approx. 9.9	Approx. 5.7	Approx. 12.3
Handset Weight with Battery (oz.)	Approx. 4.9	Approx. 3.9	Approx. 5.0	Approx. 5.0	Approx. 4.9
Charger Weight (oz.)	Approx. 3.5	Approx. 3.2	Approx. 3.2	Approx. 3.2	Approx. 3.5

1 Cell phone must have Bluetooth® capability and must be compatible to this cordless phone system.  
 2 Requires optional Key Detector fob sold separately.  
 3 Requires subscription to name-and-number Caller ID, Call Waiting and/or Voice Mail services offered by certain local telephone companies for a fee.  
 4 May require optional accessory handset sold separately depending on the model.  
 5 Name pronunciations may vary. Name pronunciation quality is based on names most commonly used in the United States.  
 6 Requires name and number registration in phonebook function.  
 7 Requires number registration in the Call Block list.  
 • The Bluetooth word mark and logos are owned by the Bluetooth SIG, Inc. and any use of such marks by Panasonic is under license.  
 • Other trademarks and trade names are those of their respective owners.



		KX-TGE245B	KX-TGE234B	KX-TGE212B	KX-TGD225N	
General	Color	Black	Black	Black	Champagne Gold	
	Frequency	1.9 GHz	1.9 GHz	1.9 GHz	1.9 GHz	
	Frequency Range	1.92 GHz - 1.93 GHz	1.92 GHz - 1.93 GHz	1.92 GHz - 1.93 GHz	1.92 GHz - 1.93 GHz	
	System	DECT 6.0	DECT 6.0	DECT 6.0	DECT 6.0	
	Number of Channels	60 Channels	60 Channels	60 Channels	60 Channels	
	Number of Phone Lines	1	1	1	1	
	Multiple Handset Capability	Up to 6	Up to 6	Up to 6	Up to 6	
	Multiple Base Units Capability	-	-	-	-	
	LCD Language	English, Spanish	English, Spanish	English, Spanish	English, Spanish	
	Intelligent ECO Mode	Y	Y	Y	Y	
	Link-to-Cell *1	-	-	-	-	
	Text Message Alert **1	-	-	-	-	
	Talking Text Sender Alert **1	-	-	-	Y	
	Key Detector Compatible *2	Y	Y	Up to 4 Key Detector	-	
	Multiple Key Detector Capability	Up to 4	Up to 4	Y	-	
	Range Extender Available	Y	Y	Y	Y	
	Enhanced Noise Reduction	Y	Y	-	-	
	Tone Equalizer	Treble/Bass	Treble/Bass	Treble/Bass	-	
	Compatible with Hearing Aid T-Coil (TIA-1083 Compliant)	Y	Y	Y	Y	
	Power Back-Up Operation	Y	Y	Y	-	
	Smart Function Key	Y (NR Key)	Y (NR Key)	Y (NR Key)	-	
	Silent Mode	Y	Y	Y	Y	
	Conference Call with Outside Line *4	Up to 3-Way	Up to 3-Way	Up to 3-Way	Up to 3-Way	
	Intercom (Handset to Base Unit)	Y	-	Y	Y	
	Intercom (Handset to Handset)	Y	Y	Y (Handset)	-	
	Clock	Y	Y	Y	Y	
	Alarm (Wake-up / Memo Alarm)	Y / Y	Y / Y	Y / Y	Y / -	
	Bluetooth® Headset Capability (HSP Support)	-	-	Y / Y	- / -	
	Belt Clip Included	Y	Y	Y	Y	
	Caller ID / Phonebook	Caller ID / Memory *3	Y / 50 Items	Y / 50 Items	Y / 50 Items	Y / 50 Items
		Call Waiting Caller ID *3	Y	Y	Y	Y
		Category Ringer / Ringer ID *3	Y	Y	Y	Y
Talking Caller ID *3*5*6		Y	Y	Y	Y	
Call Block *3*7		Y (250 numbers)	Y (250 numbers)	Y (250 numbers)	Y (60 numbers)	
Base Unit Phonebook Memory (Name/Number)	100 Items (16char/24digits)	100 Items (16char/24digits)	100 Items (16char/24digits)	100 Items (16char/24digits)		
Speed Dial / Chain Dial (Handset)	Y / Y	Y / Y	Y / Y	Y / Y		
Handset	LCD	1.88 inch FullDot Monochrome 103x65 pixels	1.88 inch FullDot Monochrome 103x65 pixels	1.88 inch, FullDot Monochrome, 103x65 pixels	1.6 inch, FullDot Monochrome, 103x65 pixels	
	LCD Backlight Color	White	White	White	White	
	Lighted Handset Keypad	Amber	Amber	Amber	Amber	
	Speakerphone (Volume Steps)	Y (7-step)	Y (7-step)	Y (7-step)	Y (7-step)	
	Ringer Pattern (Tone+Melody)	15 (5+10)	15 (5+10)	15 (5+10)	15 (5+10)	
	Ringer Volume Steps	5	5	6+OFF	6+OFF	
	Redial Memory	5 (Name & Number)	5 (Name & Number)	5 (Name & Number)	5	
	Headset Jack	Y	Y	Y	5 (Name & Number)	
	Wall Mountable (Charger)	Y	Y	Y	Y	
	Rechargeable Battery	Ni-MH (AAA x 2)	Ni-MH (AAA x 2)	Ni-MH (AAA x 2)	Ni-MH (AAA x 2)	
	Talk Time	Up to 10 hours	Up to 10 hours	Up to 10 hours	Up to 10 hours	
	Standby Time	Up to 192 hours (8 days)	Up to 192 hours (8 days)	Up to 192 hours (8 days)	Up to 144 hours (6 days)	
	Charge Time	About 7 hours	About 7 hours	About 7 hours	About 7 hours	
	Base Unit	Dial Keypad	Y	-	-	-
		Display	7-segment LED, 2 digits	7-segment LED, 2 digits	-	-
Speakerphone (Volume Steps)		Y (8-step)	-	-	-	
Ringer Pattern (Tone+Melody)		1 (1+0)	1 (1+0)	-	1 (1+0)	
Redial Memory		1	-	-	-	
Locates Cell		Y	Y	Y	-	
Hold		Y	-	Y	-	
Handset Locator		Y	Y	Y	Y	
Wall Mountable		Y	Y	Y	Y	
Answering System	Answering System	Y	Y	-	Y	
	Total Recording Time	About 17 min	About 17 min	-	About 17 min	
	Audible Message Alert	Y (Base Unit)	Y (Base Unit)	-	-	
	Message Alert (Light-Up Indicator on Handset)	-	-	-	-	
	Remote Operation from Handset	Y	Y	-	Y	
	Remote Operation from Outside (DTMF)	Y	Y	-	Y	
	Toll Saver (New Messages Recorded / No New Message)	2/5	2/5	-	2/5	
Optional Handset	KX-TGEA20	KX-TGEA20	KX-TGEA20	KX-TGEA20		
Dimensions/Weight	Base Unit Dimensions W x D x H (in.)	Approx. 7.8 x 3.5 x 3.3	Approx. 5.4 x 3.5 x 3.2	Approx. 5.4 x 3.5 x 3.2	Approx. 4.1 x 5.7 x 1.9	
	Handset Dimensions W x D x H (in.)	Approx. 2.2 x 1.3 x 6.8	Approx. 2.2 x 1.3 x 6.8	Approx. 2.2 x 1.3 x 6.8	Approx. 1.2 x 1.9 x 6.7	
	Charger Dimensions W x D x H (in.)	Approx. 2.9 x 2.9 x 1.5	Approx. 2.9 x 2.9 x 1.5	Approx. 2.9 x 2.9 x 1.5	Approx. 2.9 x 2.9 x 1.8	
	Base Unit Weight (oz.)	Approx. 9.6	Approx. 5.7	Approx. 4.6	Approx. 6.0	
	Handset Weight with Battery (oz.)	Approx. 5.0	Approx. 5.0	Approx. 5.0	Approx. 4.6	
	Charger Weight (oz.)	Approx. 3.2	Approx. 3.2	Approx. 3.2	Approx. 3.6	

		KX-TGD213N	KX-TGC222S	KX-TGC213S	KX-TG4223B	
General	Color	Champagne Gold	Silver	Silver	Champagne Gold	
	Frequency	1.9 GHz	1.9 GHz	1.9 GHz	1.9 GHz	
	Frequency Range	1.92 GHz - 1.93 GHz	1.92 GHz - 1.93 GHz	1.92 GHz - 1.93 GHz	1.92 GHz - 1.93 GHz	
	System	DECT 6.0	DECT 6.0	DECT 6.0	DECT 6.0	
	Number of Channels	60 Channels	60 Channels	60 Channels	60 Channels	
	Number of Phone Lines	1	1	1	1	
	Multiple Handset Capability	Up to 6	Up to 6	Up to 6	Up to 6	
	Multiple Base Unit Capability	-	-	-	-	
	LCD Language	English, Spanish	English, Spanish	English, Spanish	English, Spanish	
	Intelligent ECO Mode	Y	Y	Y	Y	
	Key Detector Compatible *2	-	-	-	-	
	Multiple Key Detector Capability	-	-	-	-	
	Range Extender Available	Y	Y	Y	-	
	Enhanced Noise Reduction	-	-	-	-	
	Tone Equalizer	-	-	-	-	
	Compatible with Hearing Aid T-Coil (TIA-1083 Compliant)	Y	Y	Y	Y	
	Power Back-Up Operation	-	-	-	-	
	Smart Function Key	-	-	-	-	
	Silent Mode	Y	Y	Y	-	
	Voice Mail Alert (Light-Up Indicator on Handset) *3	-	-	-	-	
	Conference Call with Outside Line *4	Up to 3-Way	Up to 3-Way	Up to 3-Way	Y 4-Way	
	Intercom (Handset to Handset)	Y	Y	Y	Y	
	Intercom All	-	-	-	-	
	Clock	Y	Y	Y	Y	
	Alarm (Wake-up / Memo Alarm)	Y / -	Y / -	Y / -	-	
	Advanced Alarm (A day of the week / Snooze)	- / -	- / -	- / -	-	
	Belt Clip Included	Y	-	-	-	
	Caller ID/Phonebook	Caller ID / Memory *3	Y / 50 Items	Y / 50 Items	Y / 50 Items	Y / 50 Items
		Call Waiting Caller ID	Y	Y	Y	Y
		Category Ringer / Ringer ID *3	Y	Y	Y	-
		Talking Caller ID *3*5*6	-	-	-	-
		Call Block *3*7	Y (60 numbers)	Y (30 numbers)	Y (30 numbers)	-
Handset Phonebook Memory (Name/Number)		-	-	-	-	
Base Unit Phonebook Memory (Name/Number)		100 Items (16char/24digits)	50 Items (16char/24digits)	50 Items (16char/24digits)	50 Items (16char/24digits)	
Speed Dial / Chain Dial (Handset)	Y / Y	Y / Y	Y / Y	-		
Handset	LCD	1.6 inch, FullDot Monochrome, 103x65 pixels	1.6 inch, FullDot Monochrome, 103x65 pixels	1.6 inch, FullDot Monochrome, 103x65 pixels	1.4 inch Dot 16dots x 3line mono	
	LCD Backlight Color	White	Amber	Amber	Amber	
	Lighted Handset Keypad	Amber	Amber	Amber	-	
	Speakerphone (Volume Steps)	Y (7-step)	Y (7-step)	Y (6-step)	6-step	
	Ringer Pattern (Tone+Melody)	15 (5+10)	10 (5+5)	10 (5+5)	10(5+5)	
	Ringer Volume Steps	6+OFF	6+OFF	6+OFF	6+OFF	
	Receiver Volume Steps	5	4	4	4	
	Redial Memory	5 (Name & Number)	5 (Name & Number)	5 (Name & Number)	5	
	Mute	Y	Y	Y	Y	
	Flash	Ni-MH (AAA x 2)	Y	Y	Y	
	Headset Jack	-	-	-	-	
	Wall Mountable (Charger)	Y	Y	Y	Y	
	Rechargeable Battery	Ni-MH (AAA x 2)	Ni-MH (AAA x 2)	Ni-MH (AAA x 2)	Ni-MH (AAA x 2)	
	Talk Time	Up to 10 hours	Up to 10 hours	Up to 10 hours	Up to 10 hours	
	Standby Time	Up to 144 hours (6 days)	Up to 144 hours (6 days)	Up to 144 hours (6 days)	Up to 6 days	
Charge Time	About 7 hours	About 7 hours	About 7 hours	About 7 hours		
Base Unit	Ringer Pattern (Tone+Melody)	-	1 (1+0)	-	1 (1+0)	
	Ringer Volume Steps	-	6+OFF	-	6+OFF	
	Locates Cell	-	-	-	-	
	Handset Locator	-	Y	Y	Y	
	Wall Mountable	-	-	-	Y	
Answering System	Answering System	-	Y	-	Y	
	Total Recording Time	-	About 17 min	-	About 18 min	
	Speaker Volume Steps (Base Unit Speaker)	-	8+OFF	-	8+OFF	
	Call Screening (Handset)	-	Y	-	Y	
	Language of Pre-recorded Greeting Message	-	English, Spanish	-	English	
	Remote Operation from Handset	-	Y	-	Y	
	Remote Operation from Outside (DTMF)	-	Y	-	Y	
	Toll Saver (New Messages Recorded / No New Message)	-	2/5	-	2/5	
	Optional Handset	KX-TGDA20	KX-TGDA20	KX-TGDA20	KX-TG4A21	
Dimensions/Weight	Base Unit Dimensions W x D x H (in.)	Approx. 5.7 x 4.1 x 1.9	Approx. 4.3 x 3.8 x 3.1	Approx. 4.3 x 3.8 x 3.1	Approx. 3.8 x 5.4 x 2.1	
	Handset Dimensions W x D x H (in.)	Approx. 1.9 x 1.2 x 6.7	Approx. 1.9 x 1.2 x 6.5	Approx. 1.9 x 1.2 x 6.5	Approx. 1.9 x 1.3 x 6.7	
	Charger Dimensions W x D x H (in.)	Approx. 2.9 x 2.9 x 1.8	Approx. 2.9 x 2.9 x 1.6	Approx. 2.9 x 2.9 x 1.6	Approx. 2.9 x 2.9 x 1.8	
	Base Unit Weight (oz.)	Approx. 5.0	Approx. 4.3	Approx. 3.6	Approx. 5.3	
	Handset Weight with Battery (oz.)	Approx. 4.6	Approx. 4.6	Approx. 4.6	Approx. 4.5	
	Charger Weight (oz.)	Approx. 3.6	Approx. 3.6	Approx. 3.6	Approx. 3.4	

1 Cell phone must have Bluetooth® capability and must be compatible with this cordless phone system.

2 Requires optional Key Detector fob sold separately.

3 Requires subscription to name-and-number Caller ID, Call Waiting and/or Voice Mail services offered by certain local telephone companies for a fee.

4 May require optional accessory handset sold separately depending on the model.

5 Name pronunciation may vary. Name pronunciation quality is based on names most commonly used in the United States.

6 Requires name and number registration in phonebook function.

7 Requires number registration in the Call Block list.

• The Bluetooth word mark and logos are owned by the Bluetooth SIG, Inc. and any use of such marks by Panasonic is under license.

• Other trademarks and trade names are those of their respective owners.

	KX-TGF383M	KX-TGF353N	KX-TG6592T	KX-TG9582B	KX-TG9542B	
General	Color	M[Metallic Black]	M[Metallic Black]	Black Metallic	Black	Black
	Frequency	1.9 GHz	1.9 GHz	1.9GHz	1.9GHz	1.9GHz
	System	DECT6.0	DECT6.0	DECT6.0	DECT6.0	DECT6.0
	Number of Channels	60 Channels	60 Channels	60 Channels	60 Channels	60 Channels
	Multiple Handset Capability	Up to 6 Handsets	Up to 6 Handsets	Up to 6	Up to 12	Up to 6
	Number of Phone Lines	1	1	2	2	2
	LCD Language	English, Spanish	English, Spanish	English/Spanish	English, Spanish	English, Spanish
	Key Detector Compatible *2	Y	Y	-	-	-
	Baby Monitor	Y	Y	-	-	-
	Power Back-Up Operation	Y	Y	Y	Y	Y
	Silent Mode	Y	Y	Y	Y	Y
	Range Boost	Y	Y	Y	Y	Y
	Intelligent Eco Mode	Y	Y	Y	Y	Y
	Link-to-Cell *1	Y	-	-	Y	Y
	Text Message Alert	Y	-	-	Y	Y
	Talking Text Sender Alert	Y	-	-	-	-
	USB Charging	-	-	-	Y	Y
Call from Outlook (Telephone Plug-in)	-	-	-	Y	Y	
Caller ID/Phonebook	Caller ID / Memory *3	Y / 50 Items	Y / 50 Items	Y / 50 Items	Y / 50 Items	Y / 50 Items
	Call Waiting Caller ID	Y	Y	Y	Y	Y
	Category Ringer / Ringer ID *3 *6	Y	Y	Category (9 Category)	Y	Y
	Talking Caller ID (Base & Handset) *3 *5 *6	Y / Y	Y / Y	Y	Y / Y	Y / Y
	Call Block *3 *7	Y (250 numbers)	Y (250 numbers)	Call Block (30)	Y (250 numbers)	Y (250 numbers)
	Voice Mail *3	Y	Y	-	-	-
	Voice Mail Alert (Light-Up Indicator on Handset) *3	-	-	Y (On)	-	-
	Phonebook Memory (Name/Number)	3000items (16char/24digits)	3000items (16char/24digits)	50 items (16char/24digits)	3000 items (16char/24digits)	3000 items (16char/24digits)
	Phonebook Copy from Cellular Phone via Bluetooth	Y	Y	Y	Y	Y
	Speed Dial (Handset / Base Unit)	Y / Y	Y / Y	Handset (3) / Base (3)	Y / Y	Y / Y
Chain Dial	Y	Y	Y	Y (Base Unit/Handset)	Y (Base Unit/Handset)	
Handset	LCD	1.8 inch FullDot Monochrome 103x65 pixels	1.8 inch FullDot Monochrome 103x65 pixels	1.9 inch Full Dot Mono 103x65 pixels	1.8 inch, FullDot Monochrome, 103x65 pixels	1.8 inch, FullDot Monochrome, 103x65 pixels
	LCD Backlight Color	White	White	White	White	White
	Lighted Handset Keypad	Amber	Amber	Y (Amber)	Amber	Amber
	Speakerphone Volume	Y (7-step)	Y (7-step)	7-Step	Y (6-step)	Y (6-step)
	Ringer Pattern (Tone+Melody)	PSTN:15(5+10) CELL:15(5+10)+InbandTone	15(5+10)	10 (5+5)	PSTN:15 (5+10), CELL:15 (5+10)+Inband Tone	PSTN:15 (5+10), CELL:15 (5+10)+Inband Tone
	Ringer Volume Steps	6+OFF	6+OFF	7-Step + OFF	6+OFF	6+OFF
	Receiver Volume Steps	5	4	5-Step	4	4
	Redial Memory	5 (Name & Number)	5 (Name & Number)	5	5 (Name & Number)	5 (Name & Number)
	Ringer / Charger Indicator (Color)	-	-	Y (Amber)	-	-
	Enhanced Noise Reduction	Y	Y	Y	Y	Y
	Tone Equalizer	Treble/Bass	Treble/Bass	Y	Treble/Bass	Treble/Bass
	Hold	Y	Y	(MENU/Soft key)	Y	Y
	Mute	Y	Y	Y	Y	Y
	Intercom (Handset to Base Unit)	Y	Y	Y	Y	Y
	Intercom (Handset to Handset)	Y	Y	Y	Y	Y
	Conference Call with Outside Line *4	Y 3Way	Y 3Way	Up to 4-Way (HS-HS-HS-LINE)	Up to 3-Way	Up to 3-Way
	Bluetooth Headset Capability	Y	-	Y	Y	Y
	Clock	Y	Y	Y	Y	Y
	Alarm	Y	Y	Y	Y	Y
	Battery	Base Unit: Ni-MH(AAA x 2) Handset: Ni-MH(AAA x 2)	Base Unit: Ni-MH(AAA x 2) Handset: Ni-MH(AAA x 2)	Rechargeable Ni-MH Batteries (AAA x 2)	Ni-MH (AAA x 2)	Ni-MH (AAA x 2)
Talk Time	13 hours	13 hours	13 hours (max, in Eco mode on)	Up to 15 hours	Up to 15 hours	
Standby Time	12 days	12 days	11 days (max)	Up to 7 days	Up to 7 days	
Charge Time	7 hours	7 hours	7 hours	About 7 hours	About 7 hours	
Headset Jack	Y	Y	Y	Y	Y	
Reversible Handset Charging	-	-	-	-	-	
Rubber Grip	-	-	Y	-	-	
Base Unit	Dial Keypad on Base	Y	Y	Y	Y	Y
	Display	3.4inch mono 103x65pixels 3Line+Softkey or 2Line+Pict+Softkey	3.4inch mono 103x65pixels 3Line+Softkey or 2Line+Pict+Softkey	-	3.4 inch, Monochrome, 103x65 pixels, 3 line+Softkey+Pict	3.4 inch, Monochrome, 103x65 pixels, 3 line+Softkey+Pict
	Redial Memory	5 (Name & Number)	5 (Name & Number)	-	10 (Name & Number)	10 (Name & Number)
	Speakerphone Volume Steps	Y (7-step)	Y (7-step)	1-8 (5)	Y (8-step)	Y (8-step)
	Handset Locator	Y	Y	Y	Y	Y
	Ringer Pattern (Tone+Melody)	PSTN:1(1+0) CELL:1(1+0)+InbandTone	1(1+0)	1 (1+0)	PSTN:2 (2+0), CELL:1 (1+0) +Inband Tone	PSTN:2 (2+0), CELL:1 (1+0) +Inband Tone
	Ringer Volume Steps	6+OFF	6+OFF	6-Step + OFF	6+OFF	6+OFF
	Wall Mountable	Y	Y	Y	Y	Y
	Answering System	Y	Y	Y	Y	Y
	Total Recording Time	About 18 min	About 17 min	About 18min	About 60 min	About 60 min
Answering System	2-Line Answering System Operation	-	-	-	Y	Y
	Audible Message Alert / Light-Up Alert	Y(Base Unit)	Y(Base Unit)	-	Y (Base Unit)	Y (Base Unit)
	New Message Notification by a Call	Y	Y	-	Y	Y
	Message Forwarding	Y	Y	-	Y	Y
	Speaker Volume (Base Unit Speaker)	8	8	8-Step + OFF	8+OFF	8+OFF
	Remote Operation from Handset / Outside Line (DTMF)	Y / Y	Y / Y	Y / Y	Y / Y	Y / Y
	Toll Saver (New Messages Recorded / No New Message)	2/5	2/5	Y	2/5	2/5
	Call Screening (Handset / Base)	Y / Y	Y / Y	BSHS (On)	Y / Y	BSHS (On)
	Optional Handset	KX-TGFA30	KX-TGFA30	KX-TGFA950	KX-TGFA950	KX-TGFA950
	Base Dimensions H x W x D (in.)	Approx. 6.4 x 4.1 x 8.7	Approx. 6.4 x 4.1 x 8.7	Approx. 2.5 x 5.8 x 5.2	Approx. 6.9 x 4.8 x 10.2	Approx. 5.1 x 8.9 x 5.0
Handset Dimensions H x W x D (in.)	Approx. 1.9 x 6.6 x 1.9	Approx. 1.9 x 6.6 x 1.9	Approx. 6.7 x 2.3 x 1.3	Approx. 1.2 x 6.6 x 1.9	Approx. 6.7 x 1.9 x 1.3	
Charger Dimensions H x W x D (in.)	Approx. 2.9 x 1.5 x 2.8	Approx. 2.9 x 1.5 x 2.8	Approx. 2.1 x 2.8 x 3.4	Approx. 1.6 x 2.9 x 2.9	Approx. 1.6 x 2.9 x 2.9	
Base Weight (oz.)	Approx. 20.5	Approx. 20.5	Approx. 8.8	Approx. 30.2	Approx. 21.2	
Handset Weight with Battery (oz.)	Approx. 4.9	Approx. 4.9	Approx. 4.7	Approx. 4.7	Approx. 4.8	
Charger Weight (oz.)	Approx. 3.5	Approx. 3.5	Approx. 2.1	Approx. 3.6	Approx. 3.6	

	KX-TGF383M	KX-TGF353N	KX-TG6592T	KX-TG9582B	KX-TG9542B	
General	Color	M[Metallic Black]	M[Metallic Black]	Black Metallic	Black	Black
	Frequency	1.9 GHz	1.9 GHz	1.9GHz	1.9GHz	1.9GHz
	System	DECT6.0	DECT6.0	DECT6.0	DECT6.0	DECT6.0
	Number of Channels	60 Channels	60 Channels	60 Channels	60 Channels	60 Channels
	Multiple Handset Capability	Up to 6 Handsets	Up to 6 Handsets	Up to 6	Up to 12	Up to 6
	Number of Phone Lines	1	1	2	2	2
	LCD Language	English, Spanish	English, Spanish	English/Spanish	English, Spanish	English, Spanish
	Key Detector Compatible *2	Y	Y	-	-	-
	Baby Monitor	Y	Y	-	-	-
	Power Back-Up Operation	Y	Y	Y	Y	Y
	Silent Mode	Y	Y	Y	Y	Y
	Range Boost	Y	Y	Y	Y	Y
	Intelligent Eco Mode	Y	Y	Y	Y	Y
	Link-to-Cell *1	Y	-	-	Y	Y
	Text Message Alert	Y	-	-	Y	Y
	Talking Text Sender Alert	Y	-	-	-	-
	USB Charging	-	-	-	Y	Y
Call from Outlook (Telephone Plug-in)	-	-	-	Y	Y	
Caller ID/Phonebook	Caller ID / Memory *3	Y / 50 Items	Y / 50 Items	Y / 50 Items	Y / 50 Items	Y / 50 Items
	Call Waiting Caller ID	Y	Y	Y	Y	Y
	Category Ringer / Ringer ID *3 *6	Y	Y	Category (9 Category)	Y	Y
	Talking Caller ID (Base & Handset) *3 *5 *6	Y / Y	Y / Y	Y	Y / Y	Y / Y
	Call Block *3 *7	Y (250 numbers)	Y (250 numbers)	Call Block (30)	Y (250 numbers)	Y (250 numbers)
	Voice Mail *3	Y	Y	-	-	-
	Voice Mail Alert (Light-Up Indicator on Handset) *3	-	-	Y (On)	-	-
	Phonebook Memory (Name/Number)	3000items (16char/24digits)	3000items (16char/24digits)	50 items (16char/24digits)	3000 items (16char/24digits)	3000 items (16char/24digits)
	Phonebook Copy from Cellular Phone via Bluetooth	Y	Y	Y	Y	Y
	Speed Dial (Handset / Base Unit)	Y / Y	Y / Y	Handset (3) / Base (3)	Y / Y	Y / Y
Chain Dial	Y	Y	Y	Y (Base Unit/Handset)	Y (Base Unit/Handset)	
Handset	LCD	1.8 inch FullDot Monochrome 103x65 pixels	1.8 inch FullDot Monochrome 103x65 pixels	1.9 inch Full Dot Mono 103x65 pixels	1.8 inch, FullDot Monochrome, 103x65 pixels	1.8 inch, FullDot Monochrome, 103x65 pixels
	LCD Backlight Color	White	White	White	White	White
	Lighted Handset Keypad	Amber	Amber	Y (Amber)	Amber	Amber
	Speakerphone Volume	Y (7-step)	Y (7-step)	7-Step	Y (6-step)	Y (6-step)
	Ringer Pattern (Tone+Melody)	PSTN:15(5+10) CELL:15(5+10)+InbandTone	15(5+10)	10 (5+5)	PSTN:15 (5+10), CELL:15 (5+10)+Inband Tone	PSTN:15 (5+10), CELL:15 (5+10)+Inband Tone
	Ringer Volume Steps	6+OFF	6+OFF	7-Step + OFF	6+OFF	6+OFF
	Receiver Volume Steps	5	4	5-Step	4	4
	Redial Memory	5 (Name & Number)	5 (Name & Number)	5	5 (Name & Number)	5 (Name & Number)
	Ringer / Charger Indicator (Color)	-	-	Y (Amber)	-	-
	Enhanced Noise Reduction	Y	Y	Y	Y	Y
	Tone Equalizer	Treble/Bass	Treble/Bass	Y	Treble/Bass	Treble/Bass
	Hold	Y	Y	(MENU/Soft key)	Y	Y
	Mute	Y	Y	Y	Y	Y
	Intercom (Handset to Base Unit)	Y	Y	Y	Y	Y
	Intercom (Handset to Handset)	Y	Y	Y	Y	Y
	Conference Call with Outside Line *4	Y 3Way	Y 3Way	Up to 4-Way (HS-HS-HS-LINE)	Up to 3-Way	Up to 3-Way
	Bluetooth Headset Capability	Y	-	Y	Y	Y
	Clock	Y	Y	Y	Y	Y
	Alarm	Y	Y	Y	Y	Y
	Battery	Base Unit: Ni-MH(AAA x 2) Handset: Ni-MH(AAA x 2)	Base Unit: Ni-MH(AAA x 2) Handset: Ni-MH(AAA x 2)	Rechargeable Ni-MH Batteries (AAA x 2)	Ni-MH (AAA x 2)	Ni-MH (AAA x 2)
Talk Time	13 hours	13 hours	13 hours (max, in Eco mode on)	Up to 15 hours	Up to 15 hours	
Standby Time	12 days	12 days	11 days (max)	Up to 7 days	Up to 7 days	
Charge Time	7 hours	7 hours	7 hours	About 7 hours	About 7 hours	
Headset Jack	Y	Y	Y	Y	Y	
Reversible Handset Charging	-	-	-	-	-	
Rubber Grip	-	-	Y	-	-	
Base Unit	Dial Keypad on Base	Y	Y	Y	Y	Y
	Display	3.4inch mono 103x65pixels 3Line+Softkey or 2Line+Pict+Softkey	3.4inch mono 103x65pixels 3Line+Softkey or 2Line+Pict+Softkey	-	3.4 inch, Monochrome, 103x65 pixels, 3 line+Softkey+Pict	3.4 inch, Monochrome, 103x65 pixels, 3 line+Softkey+Pict
	Redial Memory	5 (Name & Number)	5 (Name & Number)	-	10 (Name & Number)	10 (Name & Number)
	Speakerphone Volume Steps	Y (7-step)	Y (7-step)	1-8 (5)	Y (8-step)	Y (8-step)
	Handset Locator	Y	Y	Y	Y	Y
	Ringer Pattern (Tone+Melody)	PSTN:1(1+0) CELL:1(1+0)+InbandTone	1(1+0)	1 (1+0)	PSTN:2 (2+0), CELL:1 (1+0) +Inband Tone	PSTN:2 (2+0), CELL:1 (1+0) +Inband Tone
	Ringer Volume Steps	6+OFF	6+OFF	6-Step + OFF	6+OFF	6+OFF
	Wall Mountable	Y	Y	Y	Y	Y
	Answering System	Y	Y	Y	Y	Y
	Total Recording Time	About 18 min	About 17 min	About 18min	About 60 min	About 60 min
Answering System	2-Line Answering System Operation	-	-	-	Y	Y
	Audible Message Alert / Light-Up Alert	Y(Base Unit)	Y(Base Unit)	-	Y (Base Unit)	Y (Base Unit)
	New Message Notification by a Call	Y	Y	-	Y	Y
	Message Forwarding	Y	Y	-	Y	Y
	Speaker Volume (Base Unit Speaker)	8	8	8-Step + OFF	8+OFF	8+OFF
	Remote Operation from Handset / Outside Line (DTMF)	Y / Y	Y / Y	Y / Y	Y / Y	Y / Y
	Toll Saver (New Messages Recorded / No New Message)	2/5	2/5	Y	2/5	2/5
	Call Screening (Handset / Base)	Y / Y	Y / Y	BSHS (On)	Y / Y	BSHS (On)
	Optional Handset	KX-TGFA30	KX-TGFA30	KX-TGFA950	KX-TGFA950	KX-TGFA950
	Base Dimensions H x W x D (in.)	Approx. 6.4 x 4.1 x 8.7	Approx. 6.4 x 4.1 x 8.7	Approx. 2.5 x 5.8 x 5.2	Approx. 6.9 x 4.8 x 10.2	Approx. 5.1 x 8.9 x 5.0
Handset Dimensions H x W x D (in.)	Approx. 1.9 x 6.6 x 1.9	Approx. 1.9 x 6.6 x 1.9	Approx. 6.7 x 2.3 x 1.3	Approx. 1.2 x 6.6 x 1.9	Approx. 6.7 x 1.9 x 1.3	
Charger Dimensions H x W x D (in.)	Approx. 2.9 x 1.5 x 2.8	Approx. 2.9 x 1.5 x 2.8	Approx. 2.1 x 2.8 x 3.4	Approx. 1.6 x 2.9 x 2.9	Approx. 1.6 x 2.9 x 2.9	
Base Weight (oz.)	Approx. 20.5	Approx. 20.5	Approx. 8.8	Approx. 30.2	Approx. 21.2	
Handset Weight with Battery (oz.)	Approx. 4.9	Approx. 4.9	Approx. 4.7	Approx. 4.7	Approx. 4.8	
Charger Weight (oz.)	Approx. 3.5	Approx. 3.5	Approx. 2.1	Approx. 3.6	Approx. 3.6	

1 Cell phone must have Bluetooth® capability and must be compatible to this cordless phone system.  
 2 Requires optional Key Detector fob sold separately.  
 3 Requires subscription to name-and-number Caller ID, Call Waiting and/or Voice Mail services offered by certain local telephone companies for a fee.  
 4 May require optional accessory handset sold separately depending on the model.  
 5 Name pronunciation may vary. Name pronunciation quality is based on names most commonly used in the United States.

6 Requires name and number registration in phonebook function.  
 7 Requires number registration in the Call Block list.  
 • The Bluetooth word mark and logos are owned by the Bluetooth SIG, Inc. and any use of such marks by Panasonic is under license.  
 • Other trademarks and trade names are those of their respective owners.

Handset Model Number	For use with these Panasonic Base Unit Series (KX-TGF340 applies to KX-TGF342, 343, 344, etc.)						
KX-PRLA20	KX-PRL262	KX-PRD262					
KX-PRXA10	KX-PRX120						
KX-PRWA13	KX-PRW130						
KX-PRWA10	KX-PRW120						
KX-PRSA10	KX-PRS120						
KX-TGA120	KX-TG4130	KX-TG6590	KX-TG6630	KX-TG6640			
KX-TGA230	KX-TG2350	KX-TG2380					
KX-TGA270	KX-TG2700	KX-TG2720	KX-TG2730	KX-TG2740	KX-TG2750	KX-TG2770	KX-FPG381
KX-TGA271	KX-TG2700	KX-TG2720	KX-TG2730	KX-TG2740	KX-TG2750	KX-TG2770	KX-FPG381
KX-TGA272	KX-TG2700	KX-TG2720	KX-TG2730	KX-TG2740	KX-TG2750	KX-TG2770	KX-FPG381
KX-TGA273	KX-TG2700	KX-TG2720	KX-TG2730	KX-TG2740	KX-TG2750	KX-TG2770	KX-FPG381
KX-TGA300	KX-TG3020	KX-TG3030					
KX-TGA401	KX-TG4010	KX-TG4020	KX-TG4030	KX-TG4050	KX-TG4070	KX-TG6510	KX-TG6520
	KX-TG6530	KX-TG6540	KX-TG6570	KX-TG7530			
KX-TGA410	KX-TG4130	KX-TG6590	KX-TG6630	KX-TG6640	KX-TG7620	KX-TG7640	
KX-TGA421	KX-TG4220						
KX-TGA430	KX-TG4310	KX-TG4320					
KX-TGA450	KX-TG4500						
KX-TGA470	KX-TG4730	KX-TG4740	KX-TG4750	KX-TG4770	KX-TG7730	KX-TG4740	
KX-TGA510	KX-TG5100	KX-TG5110					
KX-TGA520	KX-TG5200	KX-TG5210	KX-TG5230	KX-TG5240			
KX-TGA523	KX-TG5200	KX-TG5210	KX-TG5230	KX-TG5240			
KX-TGA550	KX-TG5560	KX-TG5570	KX-TG5580				
KX-TGA551	KX-TG5560	KX-TG5570	KX-TG5580				
KX-TGA552	KX-TG5560	KX-TG5570	KX-TG5580				
KX-TGA560	KX-TG5620	KX-TG5630	KX-TG5650	KX-TG5670			
KX-TGA570	KX-TG5760	KX-TG5770					
KX-TGA571	KX-TG5760	KX-TG5770					
KX-TGA572	KX-TG5760	KX-TG5770					
KX-TGA573	KX-TG5760	KX-TG5770					
KX-TGA575	KX-TG5760	KX-TG5770					
KX-TGA600	KX-TG6020	KX-TG6050	KX-TG6070				
KX-TGA630	KX-TG6310	KX-TG9330	KX-TG9340	KX-TG9360	KX-TG9370		
KX-TGA641	KX-TG6410	KX-TG6420	KX-TG6430	KX-TG6440	KX-TG7430		
KX-TGA650	KX-TG6500	KX-FG6550					
KX-TGA651	KX-TG4010	KX-TG4020	KX-TG4030	KX-TG4050	KX-TG4070	KX-TG6510	KX-TG6520
	KX-TG6530	KX-TG6540	KX-TG6570	KX-TG6572	KX-TG6580	KX-TG7530	
KX-TGA659	KX-TG4130	KX-TG6590	KX-TG6630	KX-TG6640			
KX-TGA660	KX-TG4130	KX-TG6590	KX-TG6630	KX-TG6640	KX-TG7620	KX-TG7640	
KX-TGA680	KX-TG6840	KX-TG7870					
KX-TGA740	KX-TG6410	KX-TG6420	KX-TG6430	KX-TG6440	KX-TG7430		
KX-TGA750	KX-TG4010	KX-TG4020	KX-TG4030	KX-TG4050	KX-TG4070	KX-TG6510	KX-TG6520
	KX-TG6530	KX-TG6540	KX-TG7530	KX-TG6572			
KX-TGA930	KX-TG6310	KX-TG9330	KX-TG9340	KX-TG9360	KX-TG9370	KX-TH1200	KX-TH1210
KX-TGA935	KX-TG6310	KX-TG9330	KX-TG9340	KX-TG9360	KX-TG9370	KX-TH1200	KX-TH1210
KX-TGA939	KX-TG9320	KX-TG9380	KX-TG9390	KX-TG9470			
KX-TGA950	KX-TG9540	KX-TG9580					
KX-TGDA20	KX-TGC210	KX-TGC220	KX-TGD210	KX-TGD220			
KX-TGEA20	KX-TGE210	KX-TGE230	KX-TGE240	KX-TGE260	KX-TGE270		
KX-TGFA30	KX-TGF340	KX-TGF350	KX-TGF370	KX-TGF380			
KX-TGHA20	KX-TGH260						

