



GE HARRIS
Railway Electronics

Document No. 5001366

16 April 1999

Exhibit H

Photographs

H.1 Photographs

See also, Exhibit G: Intentional Radiator Test Report,
Section 5.0: Test Sample Setup and Configurations.

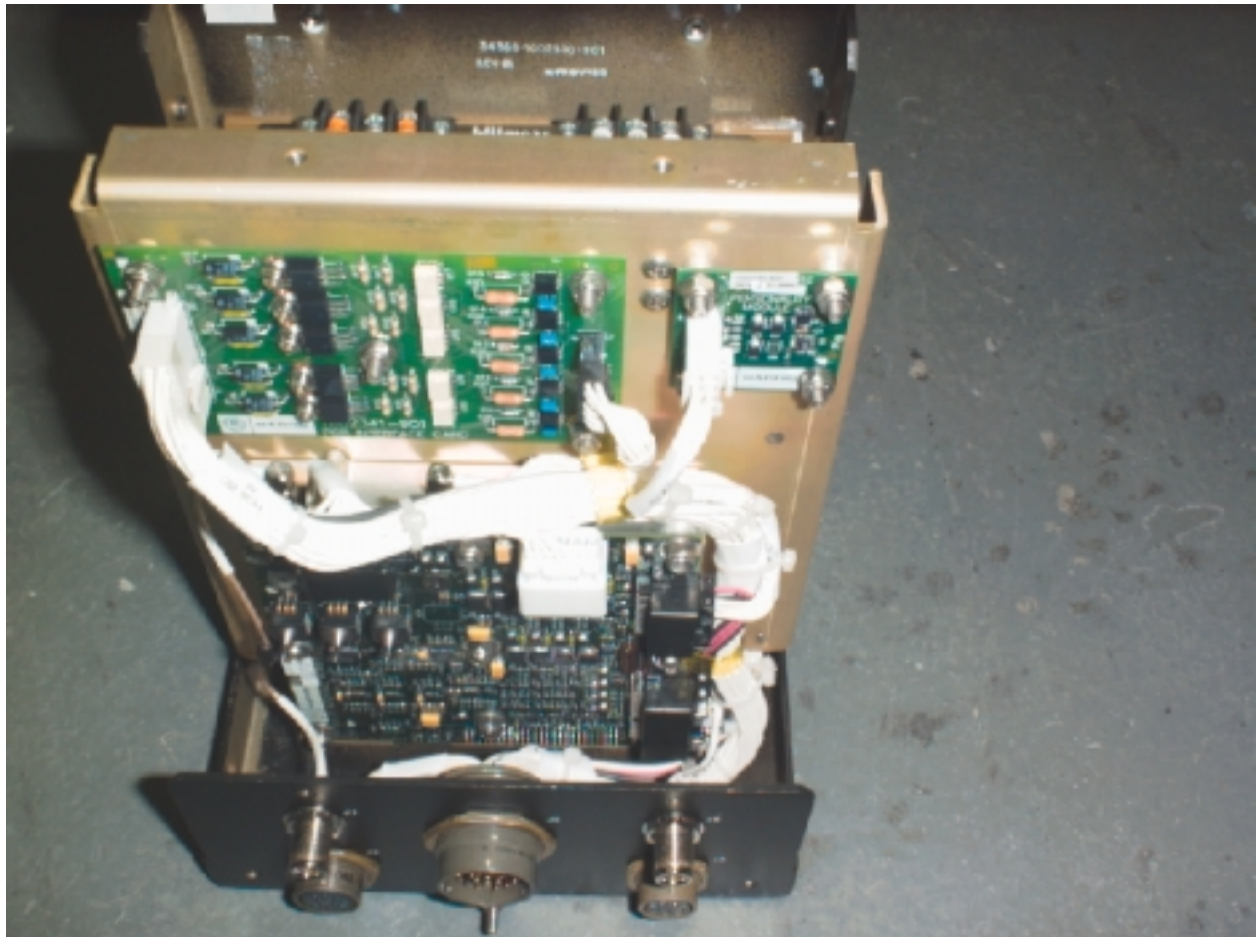


Photo H.1 Internal view of LCM



Photo H.2 LCM RF chamber test setup at Rubicom Systems, Inc.



GE HARRIS
Railway Electronics

Document No. 5001366

16 April 1999



Photo H.3 LCM test setup at Rubicom Systems, Inc.



GE HARRIS
Railway Electronics

Document No. 5001366

16 April 1999



Photo H.4 Side view of the LCM



GE HARRIS
Railway Electronics

Document No. 5001366

16 April 1999

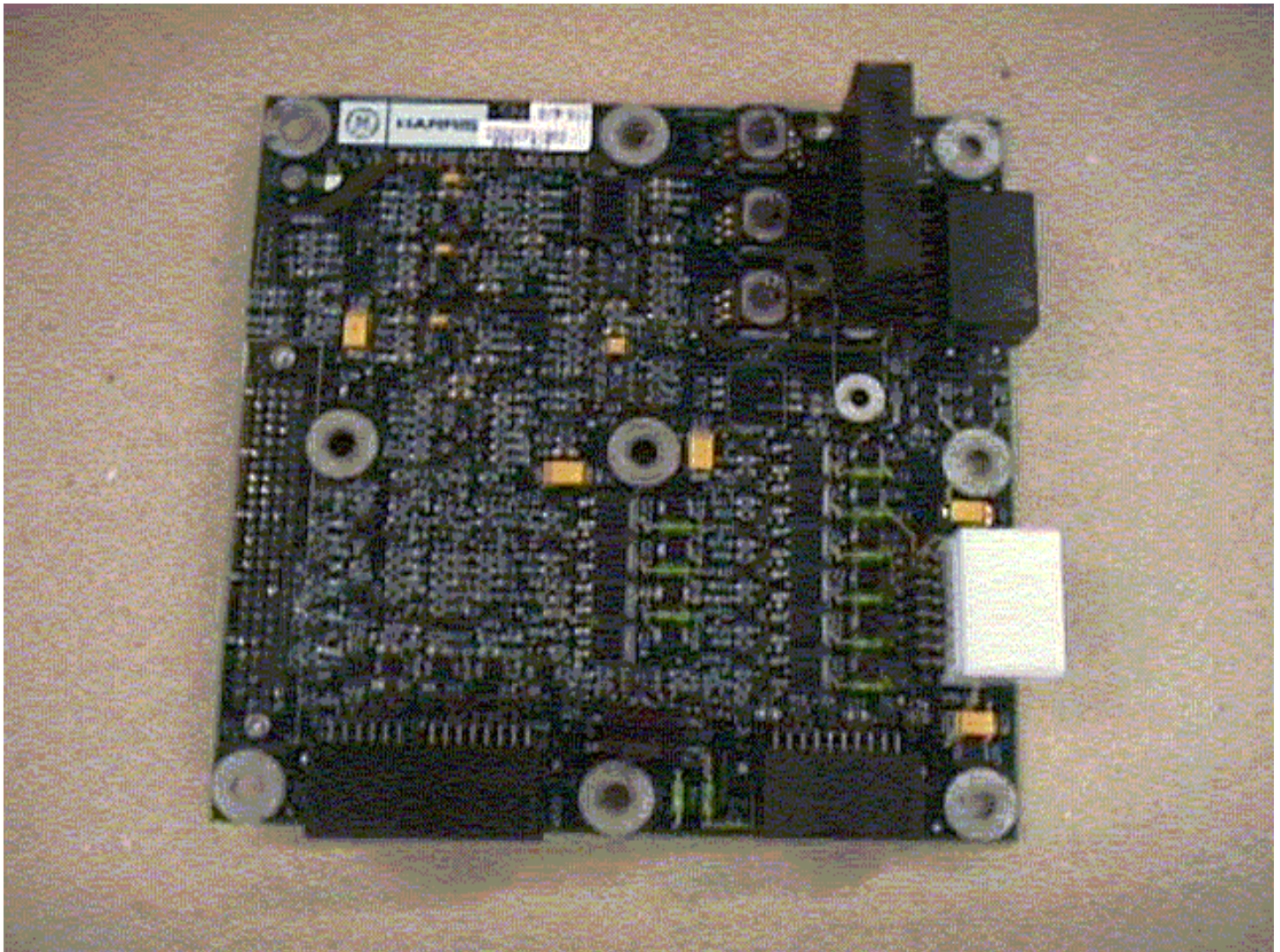


Photo H.5 Valve Interface Module board (top view)

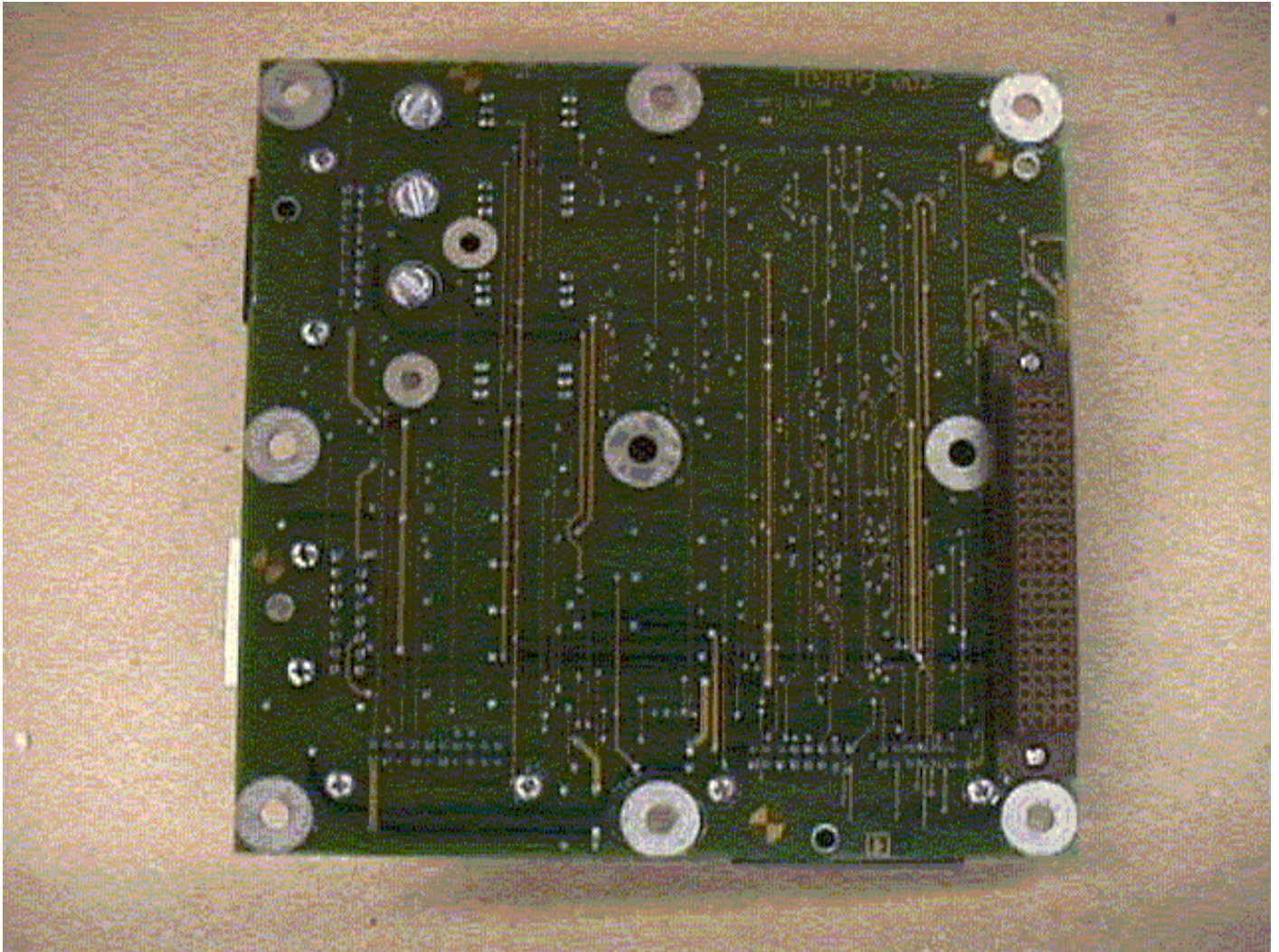


Photo H.6 Valve Interface Module board (bottom view)

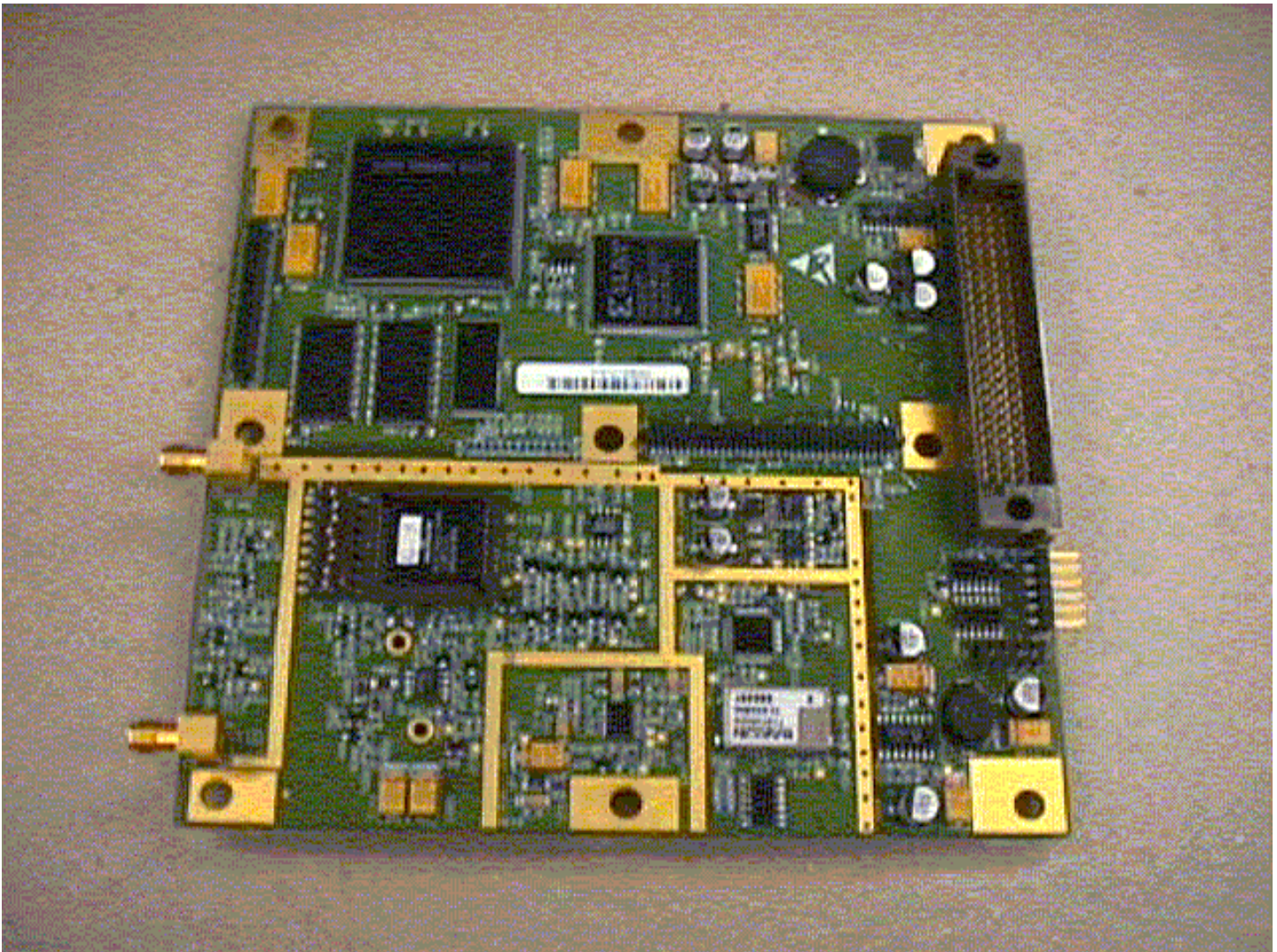


Photo H.7 ITCU Radio Board (top view)

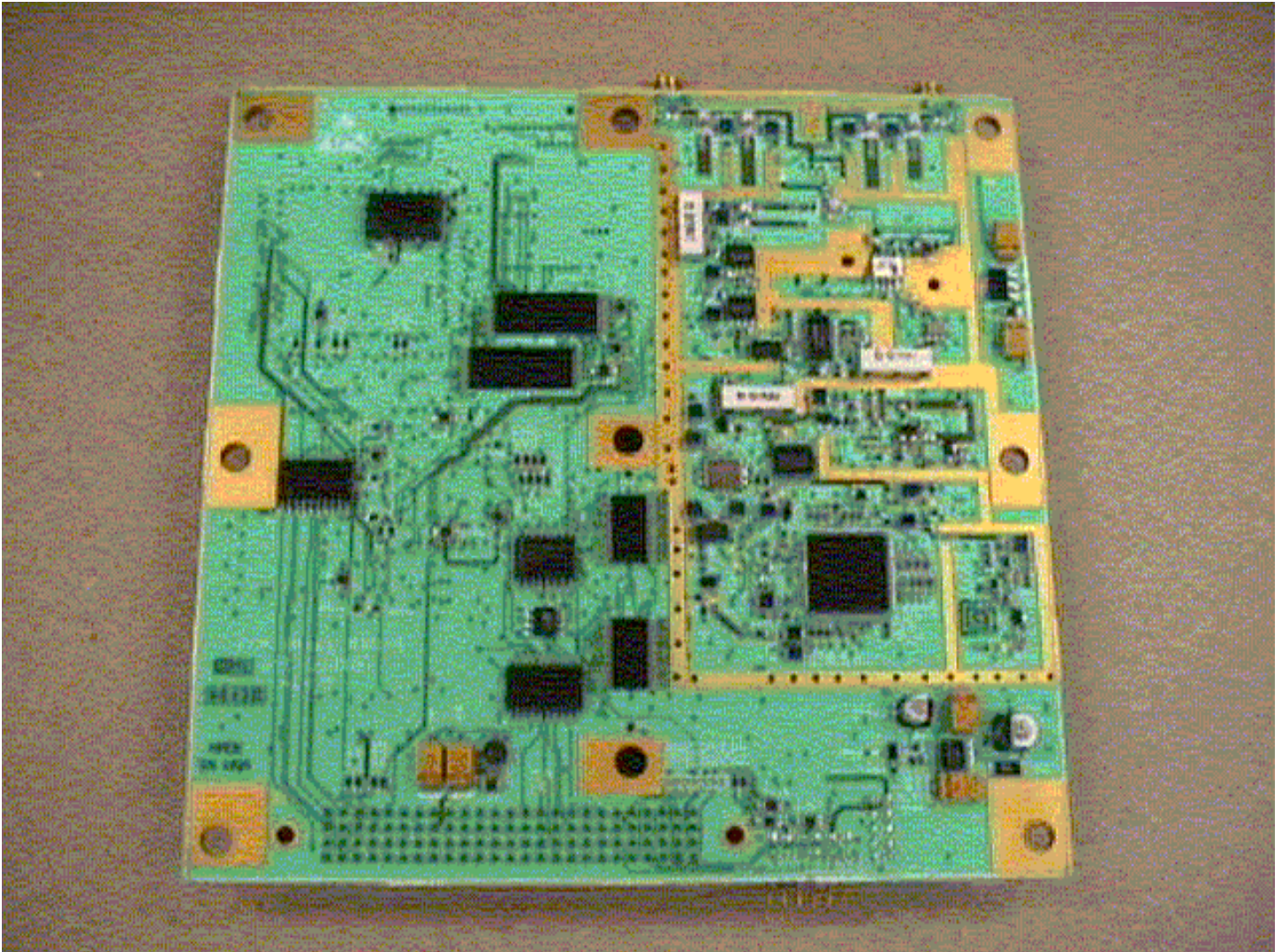


Photo H.8 ITCU Radio Board (bottom view)

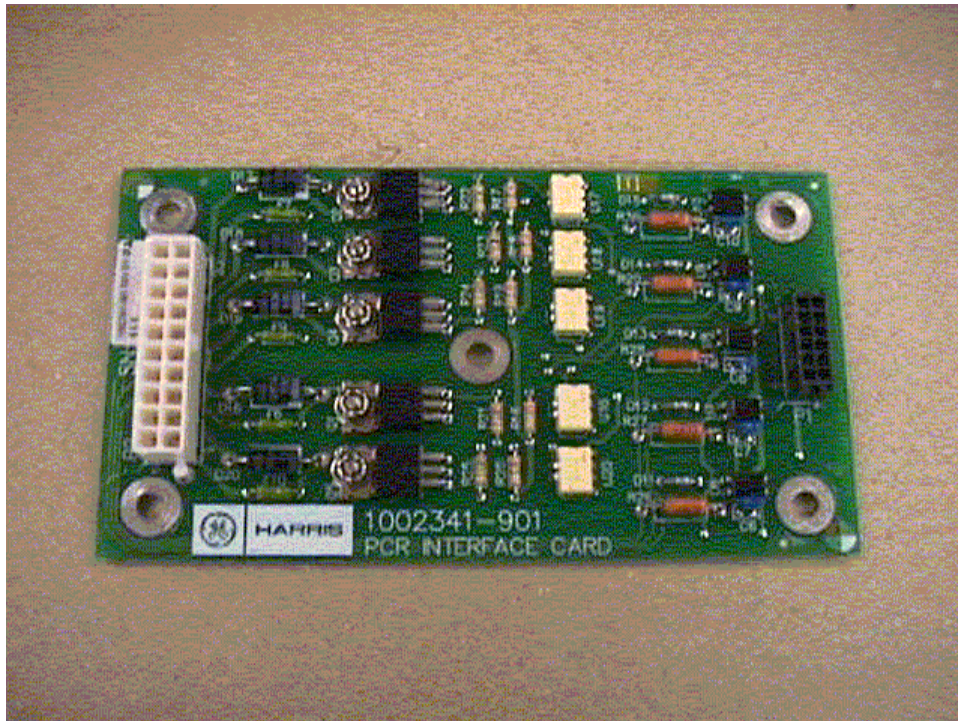


Photo H.9 PCR Interface Card (top view)

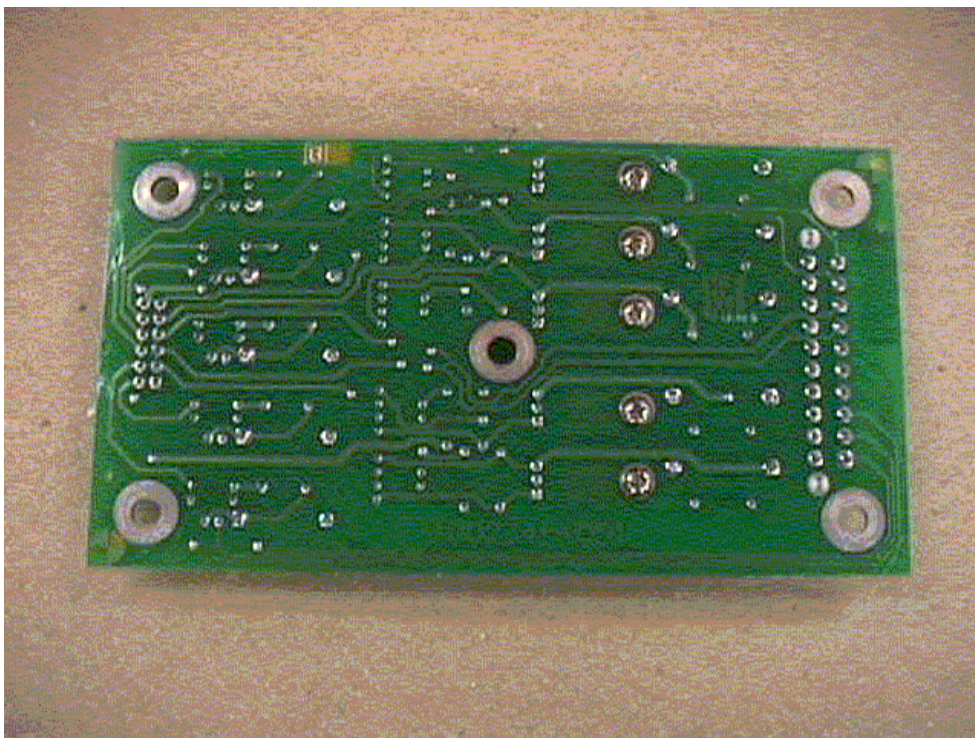


Photo H.10 PCR Interface Card (bottom view)

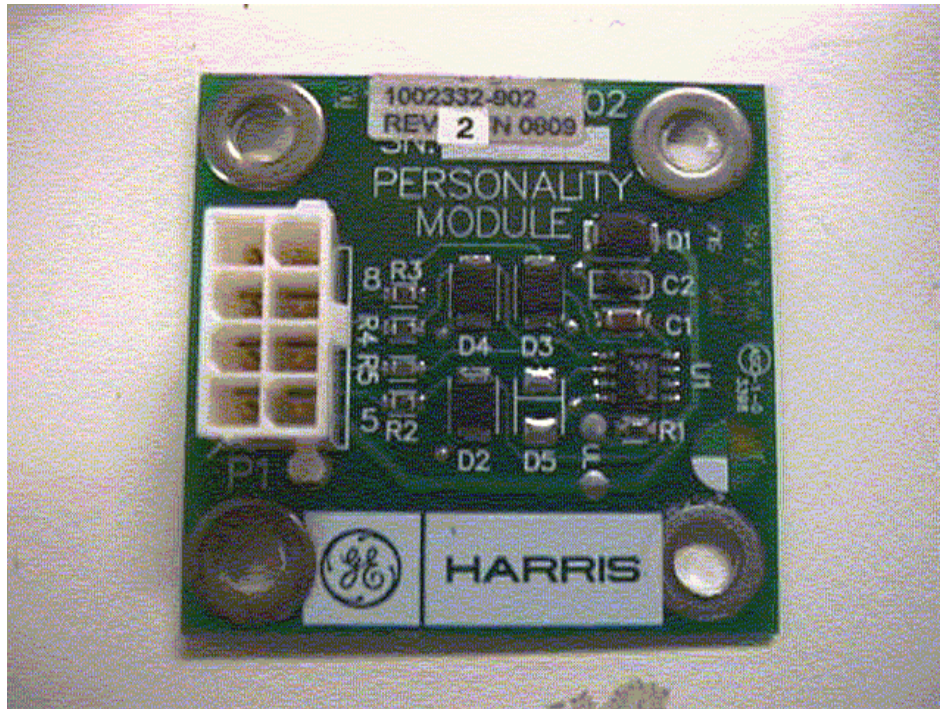


Photo H.11 Personality Module board (top view)

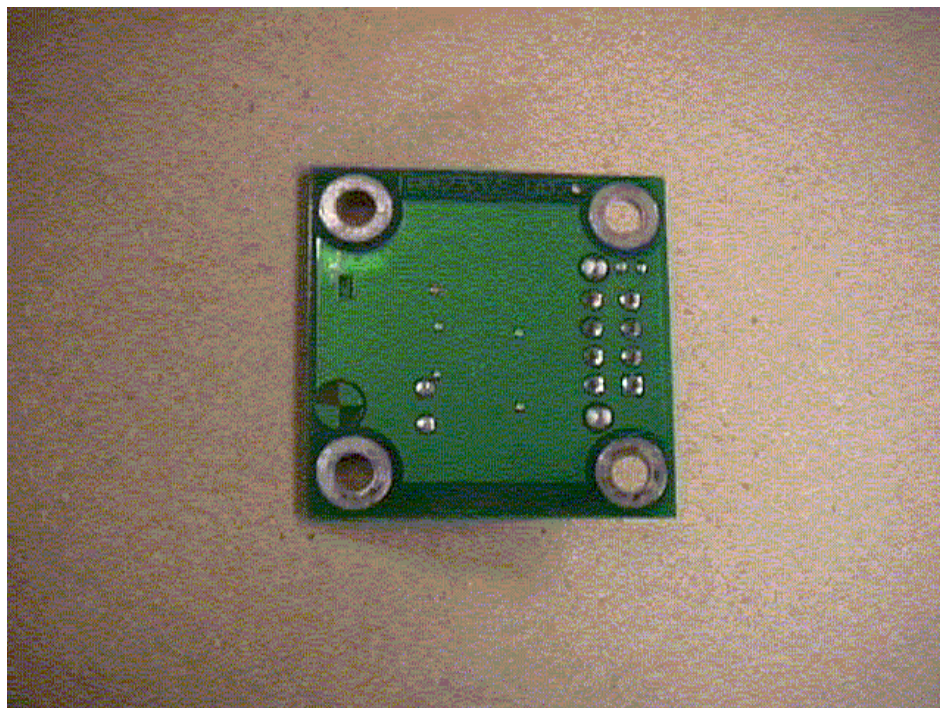


Photo H.12 Personality Module board (bottom view)



GE HARRIS
Railway Electronics

Document No. 5001366

16 April 1999

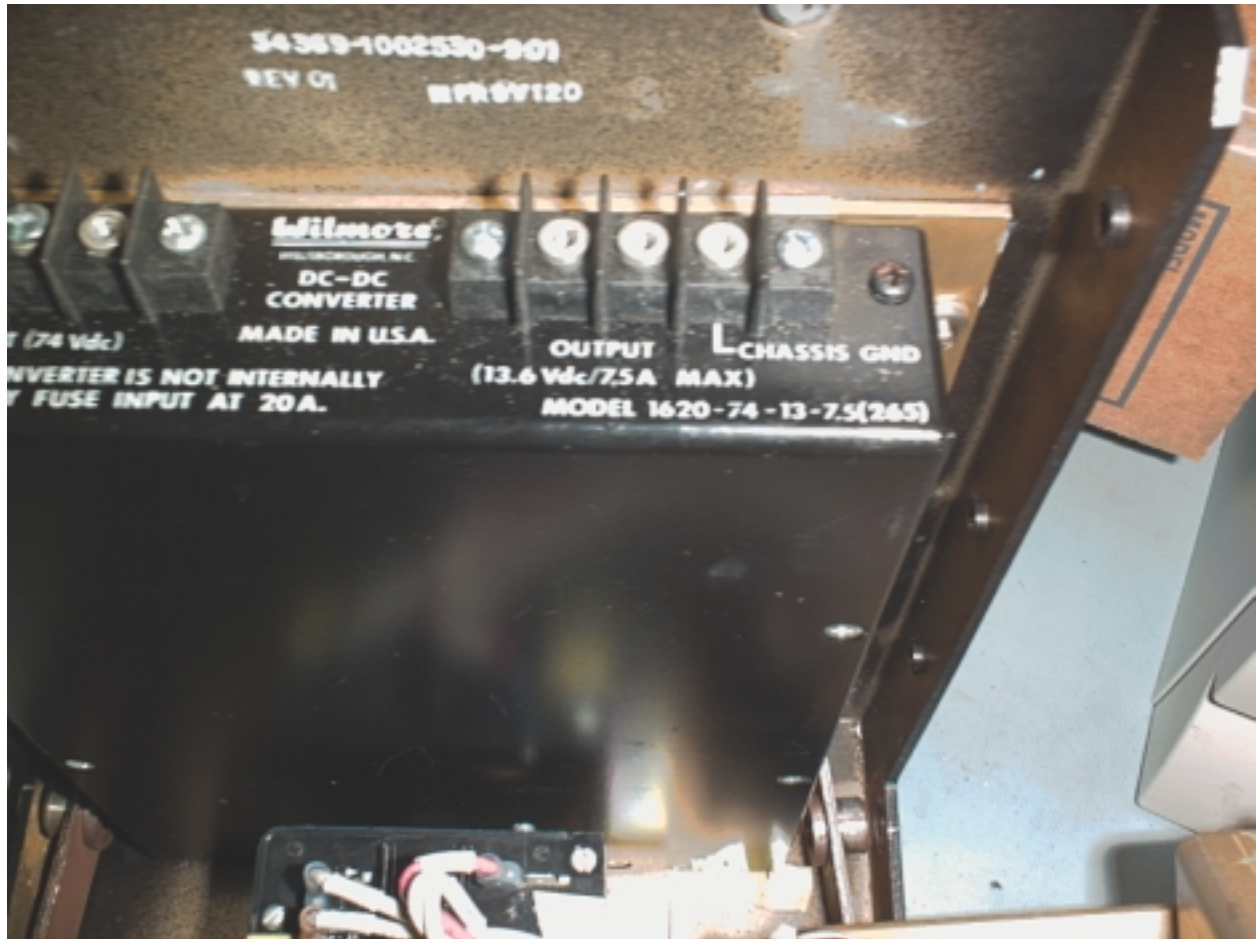


Photo H.13 Wilmore DC-DC Converter