

RECHARGERBLE FAN DC MOTOR HYDCCHGFANSA

USER MANUAL

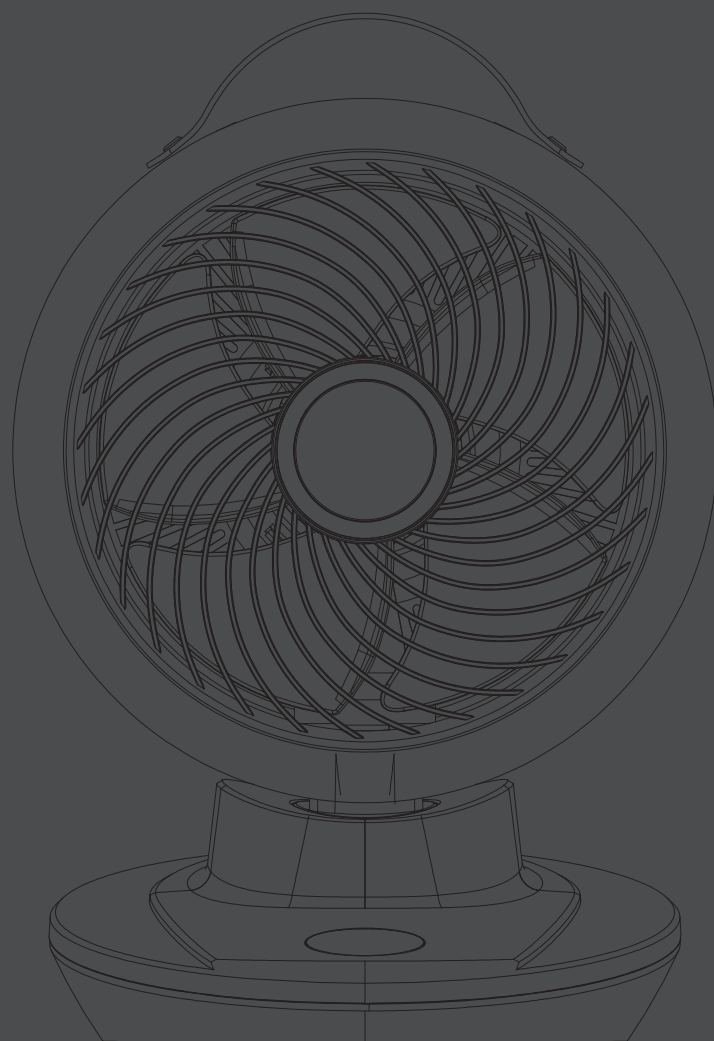
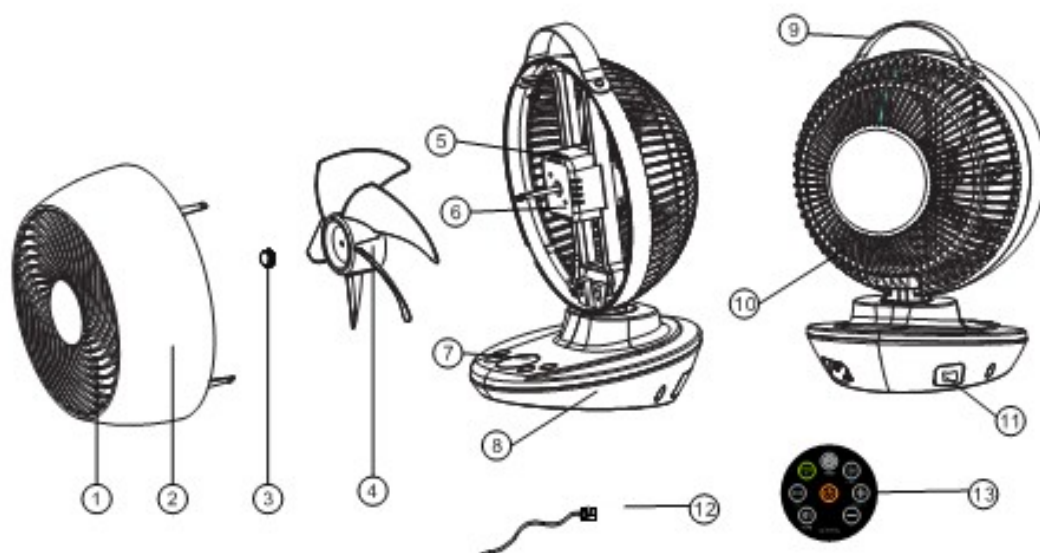


TABLE OF CONTENTS

1. PRODUCT DESCRIPTION
2. PRODUCT SPECIFICATION
3. IMPORTANT SAFETY INSTRUCTIONS
4. OPERATING INSTRUCTIONS
5. CLEANING OR MAINTENANCE

PRODUCT DESCRIPTION

- 1 Front guard
- 2 Front shell
- 3 Blade nut
- 4 Blade
- 5 Motor holder
- 6 Motor
- 7 Control panel
- 8 Base
- 9 Belt handle
- 10 Back guard
- 11 Switch
- 12 USB (Micro B)
- 13 Remote control



IMPORTANT SAFETY INSTRUCTIONS

- Please read and understand this Instruction Manual before operating.
- **MAKE SURE** that all electrical connections are clean.

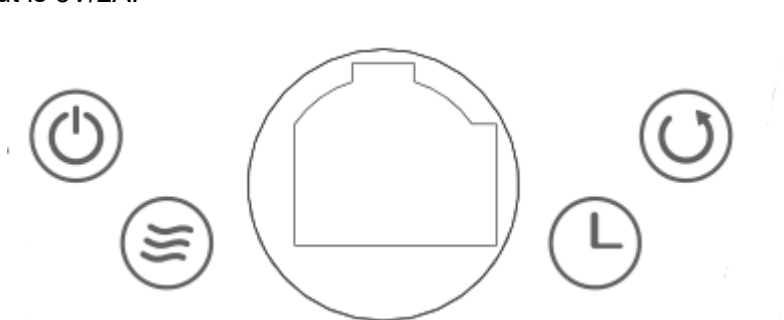
- Before use, check that the voltage power corresponds to the one shown on the appliance nameplate.
- Do not close to the fire, water, flammable.
- Supervision required if used by or near child.
- **MAKE SURE** that the fan is on a flat and secure surface before use.
- If unused for long time, please disconnect the power supply, pull out the plug again.

PRODUCT SPECIFICATIONS

Model	HYDCCHGFANSA
Rated voltage	DC5V
Rated power	15W
Net weight	1.6±0.2kg
Fan size	W250*D247*H335mm
Battery capacity	4400mAh
Charging time	4-5 hours
Usable time	Max 4 hours; Min 1 hour.

OPERATING INSTRUCTIONS

- Making sure the fan is off before plug in.
- Power Input is 5V/2A.



●On/OFF Button

- * When plugged in the fan will display the room temperature on the display.
- * When the fan is running in the charging state, try to operate at a low wind to avoid the adapter overload.
- * Pressing the On/OFF button for the first time, the fan will start.
- * Pressing the On/Off button for the second time, the fan will slow down and stop.

●Speed Button

- * Press the speed button on the control panel /remote control to adjust the air flow fan speed. There are 12 fan speeds available. Adjust the fan wind speed from 1 to 12 cycle. If press for more than a second, it will auto-increment.

- * There is wind speed function memory when plugged in.

●ECO function

- * ECO function can only be operated with the remote control.
- * Press on the icon, the fan speed will automatically change as per the table below.

Room temperature	Fan speed
<23°C	2
23 to 25°C	4
25 to 27°C	6
27 to 29°C	8
29 to 31°C	9
31 to 33°C	10
>33°C	12

●Timer

- * When the fan is standby state, you can use the timer button to set an interval between, in 30 minute segments, 1 to 6 hours after which the fan will turn ON.
- * When the fan is turned on and running, you can use the timer button to set an interval, in 30 minute segments, between 1 to 6 hours after which the fan will turn OFF.

●Oscillation Buttons (OSC)

- * This button can be used to start and stop the sideways oscillation left and right. Press once to turn the oscillation on and press again to stop the motion, in doing so you can fix the direction of the fan.
- * The up and down angle can be fixed manual by hand, please one hand on the base and one hand on the top of the fan and gently move the head up or down as required.

●Remote control

- * (Light): Press this button to turn off all lights of the fan. Press any other button to turn on the light.
- * (Mute): Press this button, all the fan button prompt sound is off, press this button again, the sound is on.
- * Before use, please remove the insulator from the battery box.
- * The receiving distance of the remote control is about 3 meters, and the receiving Angle is about 30 degrees to 45 degrees.
- * If the remote control is close to the fan but cannot be used, please replace the battery.
- * Incorrect installation will result in battery leakage and corrosion, and damage to the remote control.
- * When the remote control is not used for a long time, please take out the battery to

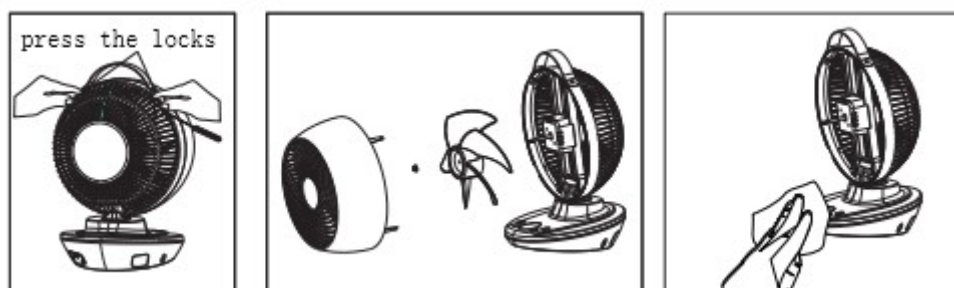
avoid battery leakage.

- * The replacement of the remote control is shown in the picture.



CLEANING OR MAINTENANCE

- * Make sure that the appliance is switched OFF, unplugged and completely cool before cleaning or attempting to store the item.
- * Press the four locks (see below first picture), you can be disassemble the front guard.
- * Clockwise the blade nut on the blade and discharge the blade. (see below the second picture)
- * You can clean the front guard, blade, blade nut with water.
- * You can clean the house with neutral soft cloth. (see below the last picture)
- * You need to reassemble after cleaning.



- I. Do not immerse, or any other chemical liquid. Wipe the exterior with a soft damp cloth or sponge.
- II. Remove stubborn spots with a cloth moistened with mild liquid detergent.
- III. Do not use abrasive scouring pads or powders.

User manual is subject to change without notice. For the latest version of your user manual, please visit <https://www.kogan.com/usermanuals/>. For further assistance, you can visit the Kogan.com Help Centre at <https://help.kogan.com/>.

For Inquiries, Please Contact:

Kogan Australia Pty Ltd
139 GLADSTONE STREET SOUTH MELBOURNE, VIC 3205 AUSTRALIA
<https://help.kogan.com/>