



Quick Start Guide

EN

Video Monitoring Kit



Read me first

Welcome



Congratulations on your purchase of the **SwannOne™ Video Monitoring Kit** - the smart alarm security & video monitoring for your home in one simple solution.

This guide introduces the exciting things in your **SwannOne Video Monitoring Kit** and shows you how to get devices up and running right away.

Technical Support



Get more information regarding the setup and use of your SwannOne products on the web at swannone.com, or contact our multi-lingual support team anytime via:

	USA & Canada	1800 627 2799
	UK & Europe	0808 168 9031
	Australia	1800 788 210
	New Zealand	0400 479 266
	support@swannone.com	

SwannOne Warranty

Your SwannOne products are backed by a full 12 month guarantee from the date of purchase. In the unlikely event of anything going wrong, you can have confidence that your purchase is protected. Refer to swannone.com for terms and conditions.

FCC Statement

These devices comply with part 15 of the FCC Rules. Operation is subject to the following two conditions: (1) These devices may not cause harmful interference, and (2) These devices must accept any interference received, including interference that may cause undesired operation.



Disposal and Recycling Information

Correct Disposal of this product. This marking indicated that this product should not be disposed with other household wastes throughout the EU. To prevent possible harm to the environment or human health from uncontrolled waste disposal, recycle it responsibly to promote the sustainable reuse of material resources. To return your used device, please use the return and collection systems or contact the retailer where the product was purchased. They can take this product for environment safe recycling.



© Swann Communications 2015

QSGB271114E

What's in your Kit?



Smart Hub

The wireless multi-platform SwannOne Smart Hub enables control of all your SwannOne devices from your smartphone. Complete with internal battery backup and USB charging ports, the Smart Hub has an in-built microphone to listen out for glass breakage. Additional sound analytics (including baby crying & gunshots) are available via optional plans*.



Key Fob

The SwannOne Key Fob Remote Control allows you to activate Home, Away & Night modes without the need for a Smartphone.



Motion Sensor & Window/Door Sensor

The SwannOne Motion Sensor detects movement in a surrounding area while the SwannOne Window/Door Sensor is a magnetic two-piece device that helps you monitor the opening and closing of doors and windows. Fitted with 3M Command™ Mounting Strips, they can be easily installed just about anywhere.



SoundView Indoor Camera

The SwannOne SoundView Indoor Camera monitors the inside of your home & records events whenever motion or sounds of interest are detected and notifies you on your Smartphone.

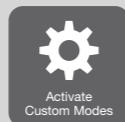


FEATURES

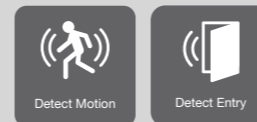


* Additional fees may apply depending on the plan chosen.

FEATURES



FEATURES



FEATURES

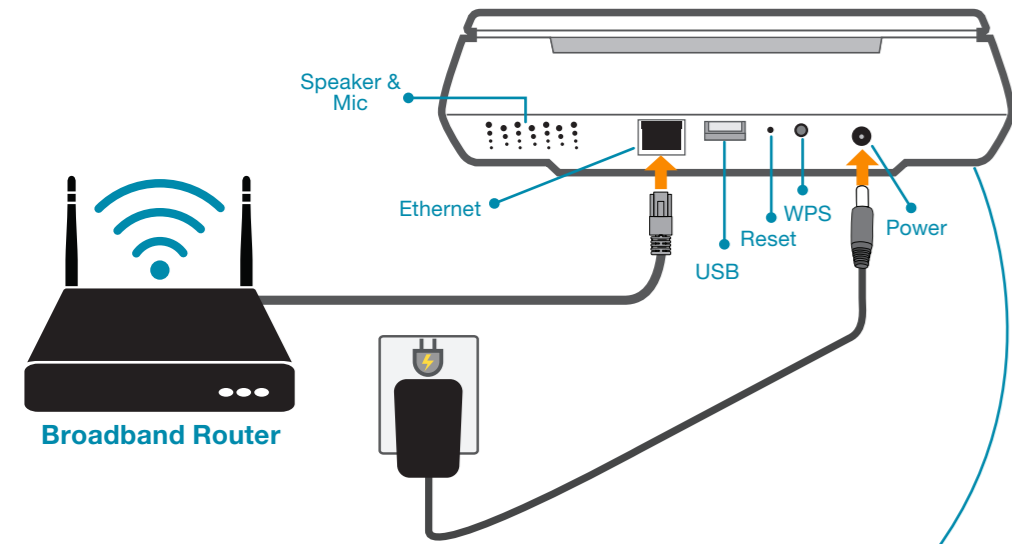


Follow these simple steps to set up your Video Monitoring Kit

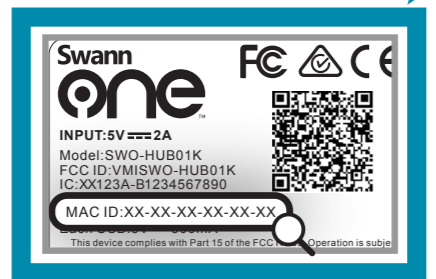
1 Prepare Devices

Smart Hub

Connect your Smart Hub to the Internet and a power outlet with the included Ethernet cable and power adapter.



The sticker on the base of your Smart Hub contains the information you need to register your Hub. Take note of the MAC ID.

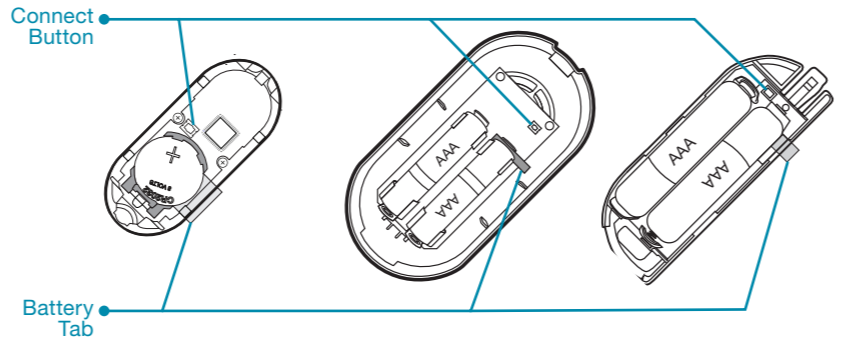


Jot it down here!
MAC ID: _____

SwannOne products are designed to be easy to set up. However, if at any time you need help or get stuck, please visit swannone.com/faq where you can find answers to frequently asked questions & more.

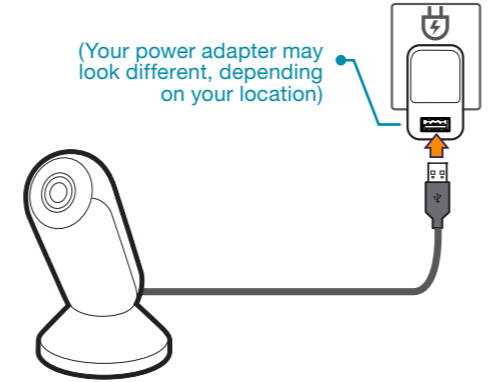
Key Fob and Motion & Door/Window Sensors

Batteries are pre-fitted inside your devices. Open the cover and remove the battery tab from each device to activate.



SoundView Indoor Camera

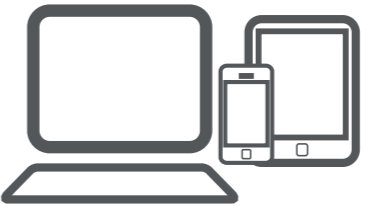
Plug your camera into a power outlet using the included power adapter and USB cable.



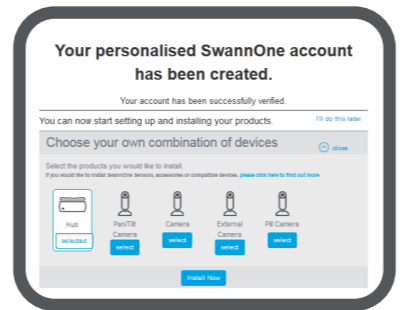
2 Create Account

Before you can install your kit, you must create a SwannOne account to register your devices. Your SwannOne account is what you use to control and manage your SwannOne system and services.

Go to home.swannone.com from your PC, Mac, smartphone or tablet, and sign up for a SwannOne account.



3 Install Devices



Log in to your new SwannOne account at home.swannone.com. Follow on-screen prompts to choose the devices you want to install and then select **"Install Now"** to begin.

You will be guided with clear, step-by-step instructions on:

- registering the Smart Hub
- configuring Wi-Fi network
- linking SwannOne devices
- performing walk-tests



Top Tips

- We've designed the hub to look stylish next to any decor, so feel free to move it around once it's connected to Wi-Fi. As long as the hub is within coverage of your wireless router, it will automatically reconnect.
- The strongest possible overall coverage for all your SwannOne devices is achieved when the hub is placed somewhere in the middle of your home. Try to keep it away from metal barriers, microwaves and Bluetooth devices as they may potentially cause interference.
- Customize and expand your SwannOne system easily at any time via your SwannOne web dashboard. From cameras and sirens, to power plugs and lights - the Smart Hub is compatible with many variety of home automation products.

4 Download App

Stay connected and manage your SwannOne Smart Home system wherever* you are. Receive sensor alerts, watch what's going on, and much more.

Simply download the SwannOne app for iOS or Android on your smartphone or tablet from the Apple App Store or Google Play.



* Internet connection required.





Video Monitoring Kit

Smart alarm security & video monitoring for your home in one simple solution



Kit includes

- Smart Hub
- SoundView Indoor Camera
- Motion Sensor
- Door/Window Sensors x 2
- Key Fob

Key Features

- Control your home security and household devices on your Smartphone from anywhere
- Activate home, away & night modes to manage your security needs
- See what's happening at your property with live video streaming
- Detect motion in your home or business & receive an alert if anything out of the ordinary is detected
- Be notified if your doors or windows are opened unexpectedly or check-in to make sure your property is secure
- Notify someone if you need urgent help in your home with a personal safety feature
- Monitor specific sounds with built-in microphones to detect & alert you of the sound of glass breaking. Additional sounds (Smoke/CO alarms, baby crying, car alarm & gunshot detection) are available via optional plans*

Alarm Triggers	Mobile Alerts	Smartphone Controllable	Easy Setup	Customizable Settings	Intelligent Sound Alerts
Detect Entry	Temperature Indication	Secure	Night Vision	High Definition	Expandable

* Fees apply

Compatible with

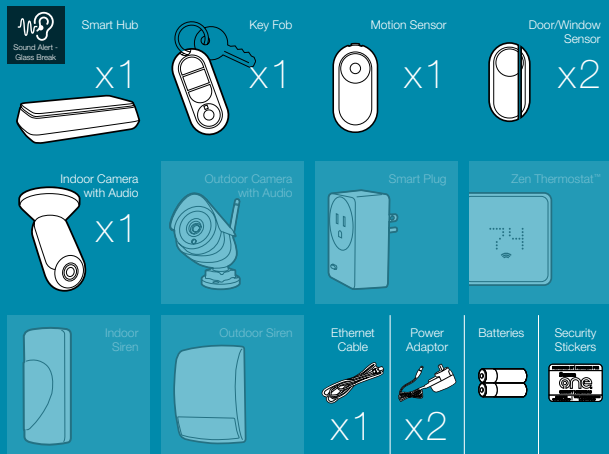


Download the free app for



In the box

SwannOne™ Smart Hub, Key Fob, Motion Sensor, Door/Window Sensor x 2, Indoor Camera with Audio, Ethernet Cable 6.5ft / 2m x 2, Power Adapter, Security Stickers, Quick Start Guide



Technical Specifications

SwannOne™ Smart Hub

Protocol	ZigBee, Wi-Fi
USB Port	USB 2.0 x 2
Wireless range	Up to 165ft / 50m, typically 65ft / 20m [^]
Dimensions	8.9 x 5.5 x 2.4" / 227 x 140 x 60.5mm
Weight	23oz / 640g
Mobile app	iOS & Android devices
Number of devices supported	Up to 200

SwannOne™ SoundView Indoor Camera

Video quality	720p HD
Viewing angle	76°
Night vision distance	32ft / 10m
Dimensions	1.6 x 1.6 x 4.2" (body), 2.8 x 2.8" (base) / 41 x 41 x 106mm (body), 70 x 70mm (base)
Weight	8.9oz / 253g
Power	5VDC, 1.0A
Indoor / Outdoor	Indoor use only

SwannOne™ Motion Sensor

Dimensions	3.76 x 1.89 x 1.26" / 95.5 x 48 x 32mm
Weight	2.8oz / 80g
Batteries	AAA x 2 (included)

SwannOne™ Window/Door Sensor

Dimensions	3.15 x 1.65 x 0.79" / 80 x 42 x 20mm
Weight	1.6oz / 45g
Batteries	AAA x 2 (included)

SwannOne™ Key Fob Remote Control

Dimensions	2.5 x 1.05 x 0.47" / 63.5 x 26.75 x 12mm
Weight	1oz / 30g
Batteries	CR2032 x 1 (included)

System Requirements

Internet Connection	High-Speed
Minimum Upload Speed	256kbps per camera
Wireless Network	Wi-Fi b/g/n
Internet Browser	Internet Explorer 9+, Firefox, Safari 7+, Chrome
Compatible Devices	iPhone, iPad, iPod Touch, Android devices, PC & Mac computers
Operating Systems	iOS 7 & later, Android 4.0 & later, Microsoft® Windows® 7 & later, Mac OS 10.7 & later

The SwannOne App

The SwannOne app in conjunction with the Smart Hub brings your SwannOne Smart Home to life, allowing you to monitor & control your system from anywhere. As the environment changes and technology advances, your SwannOne system will continually be developed and enhanced and you will from time to time receive software updates which will allow you to get even more out of your SwannOne Smart Home.



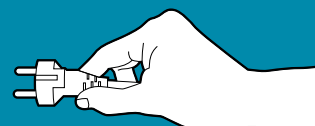
Expandable to your Needs

To get even more out of your SwannOne™ system, you can select from a range of flexible plans which are available for purchase on a Pay as You Go (PAYG) basis or monthly subscriptions with no lock-in contracts. The paid services will provide you with the ability to add additional users to your system, enhanced automation and rules capabilities, access to multiple properties, additional sound alerts, cloud video storage & professional services including centralized security monitoring. Visit www.SwannOne.com to find out more about how the SwannOne™ service options can help provide complete peace of mind.



Plug & Play Out of the Box

When you register with SwannOne™ you will have access to the Home Essentials Plan. This entitles you to the following advantages FREE OF CHARGE:



Notifications	Email alerts, text messages and Smartphone push notifications for 2 users
Live video Streaming	Real-time footage of what is going on at your home
Intelligent Sound Alerts	Includes access to the glass door & window breakage sound alerts
Your SwannOne™ Account	A user portal allowing you to control your SwannOne™ system & customize it to the way you like it - manage your contacts, personal details, change rules & more...

For more information about SwannOne visit:

swannone.com

* Additional fees may apply.
^ Depending on local conditions.